

HONORHEALTH - FOUR PEAKS MEDICAL CENTER | PHASE 2 | 1301 S. Crismon Rd. Mesa, AZ 85209
SIGN PACKAGE PREPARED BY: AIRPARK SIGNS & GRAPHICS | 12.17.25

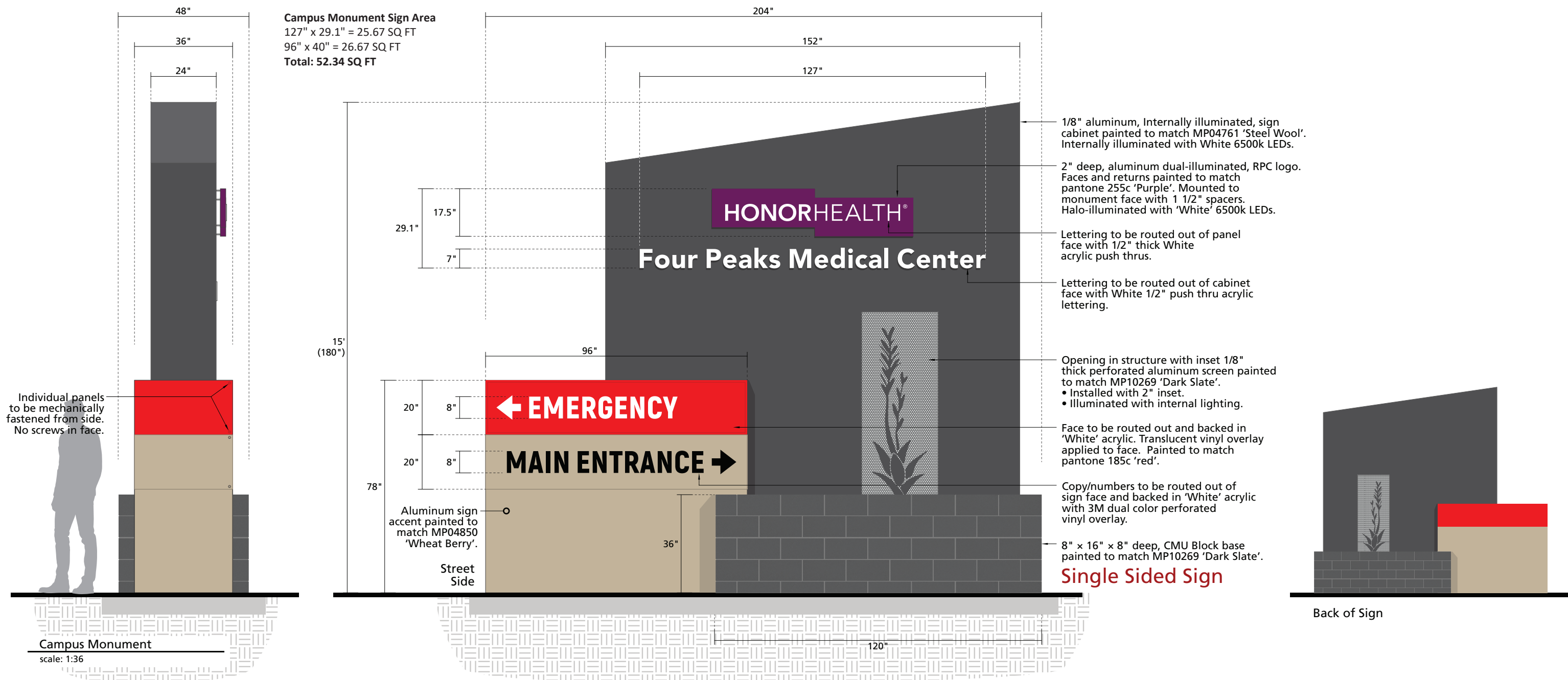
City of Mesa Record Numbers

BOA25-00812
PRS25-00729



1205 N. Miller Road
Tempe, AZ 85288
480.966.6565
airparksigns.com

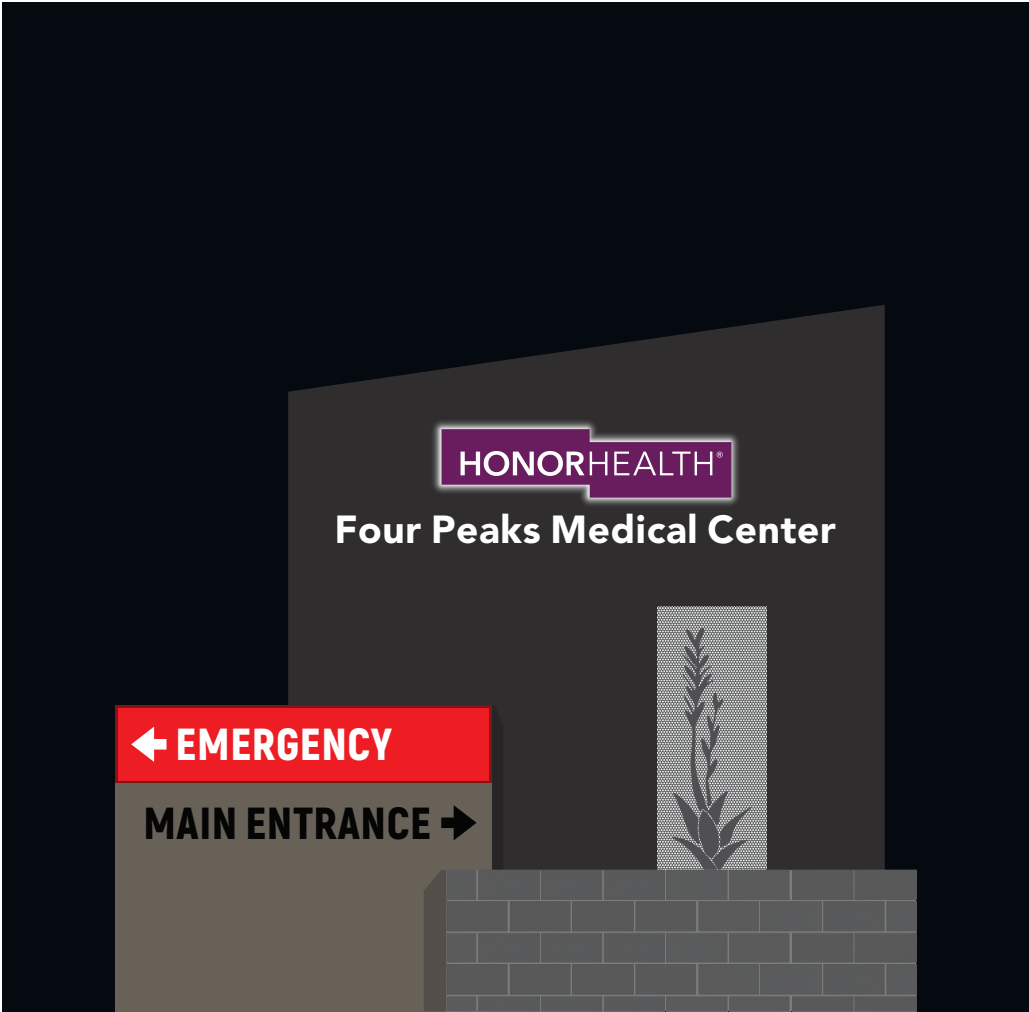




All specified details on these drawings are subject to change due to the availability of materials and/or changes in the method of fabrication. Airpark signs & graphics will do their best to maintain the designs intent of these drawings at all times. If the owner or owners' s representative wishes to receive detail drawings on all changes during the fabrication process, airpark signs & graphics must be Advised in writing prior to the start of fabrication. This is an original unpublished drawing created by airpark signs and graphics. It is submitted for your personal use in connection with a proposed project being planned for you by airpark signs and graphics. It is not to be reproduced, copied, photographed, exhibited or used in any fashion without expressed written approval of airpark signs and graphics.



Elevation Photo



Illuminated Sign at Night



Gretchen Wilde, owner / designer
1205 N. Miller Road
Tempe, AZ 85288
480.966.6565 / 480.966.5668 (f)
signs@airparksigns.com

1301 S. Crismon Rd.
Mesa, AZ 85209

NOTES: **Campus Monument**

Approved By: _____

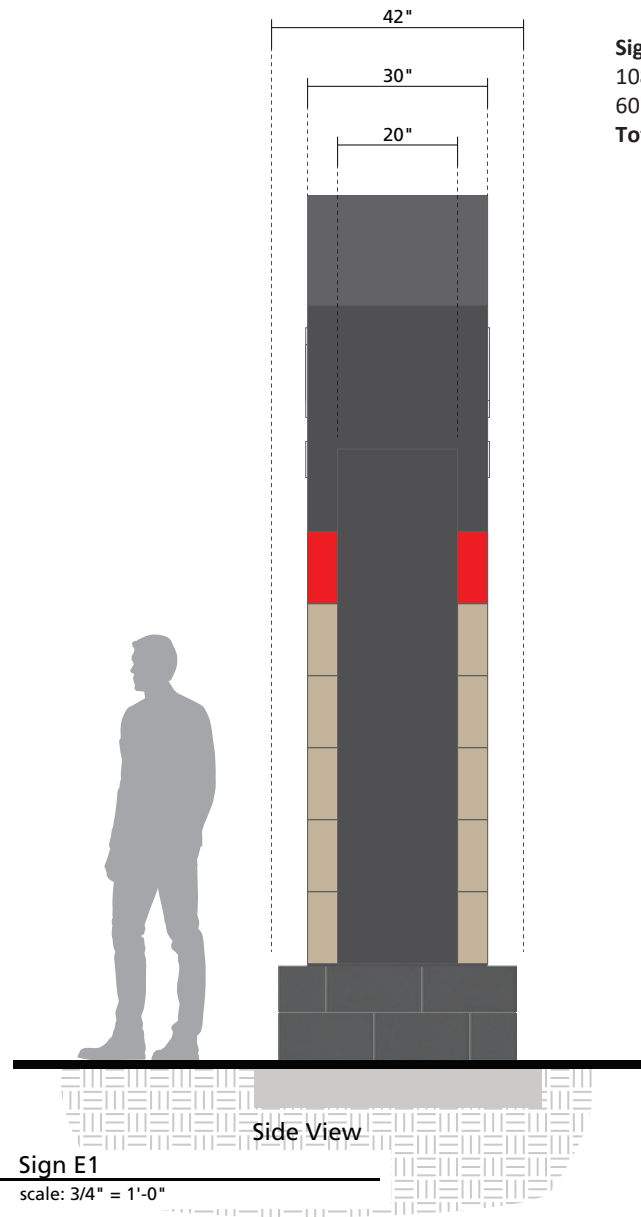
Date: _____

trc
gw

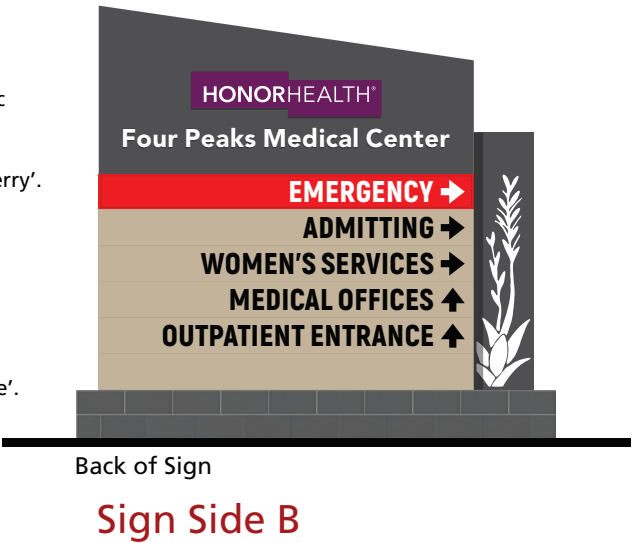
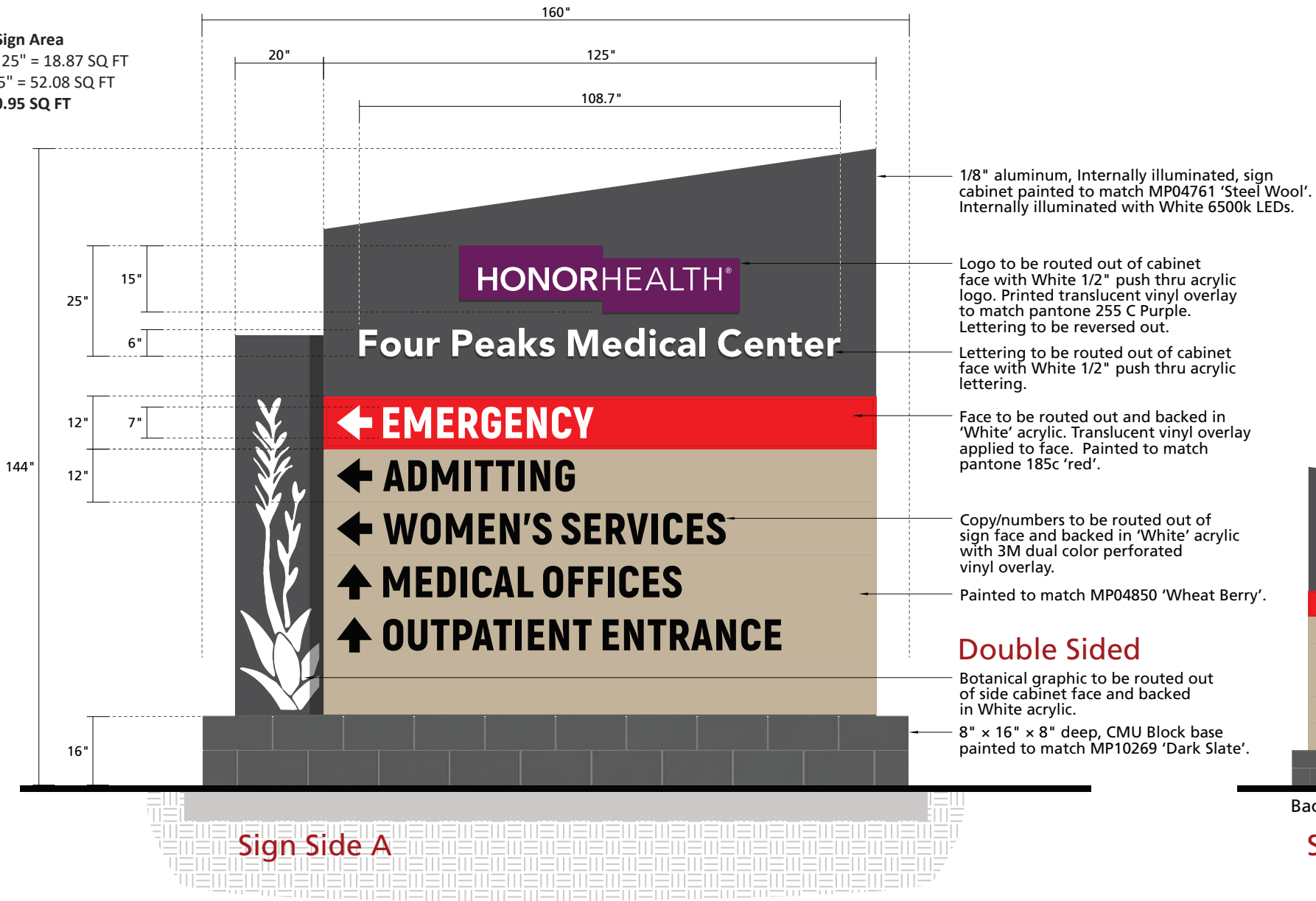
HonorHealth\
1301 S Crismon Rd, Mesa
HonorHealth Large Monument

12.17.25

2b
PAGE



Sign E1 Sign Area
108.7" x 25" = 18.87 SQ FT
60" x 125" = 52.08 SQ FT
Total: 70.95 SQ FT



Elevation Photo



Illuminated Sign at Night



Gretchen Wilde, owner / designer
1205 N. Miller Road
Tempe, AZ 85288
480.966.6565 / 480.966.5668 (f)
signs@airparksigns.com

1301 S. Crismon Rd.
Mesa, AZ 85209

NOTES: Entry Monument E1

Approved By:

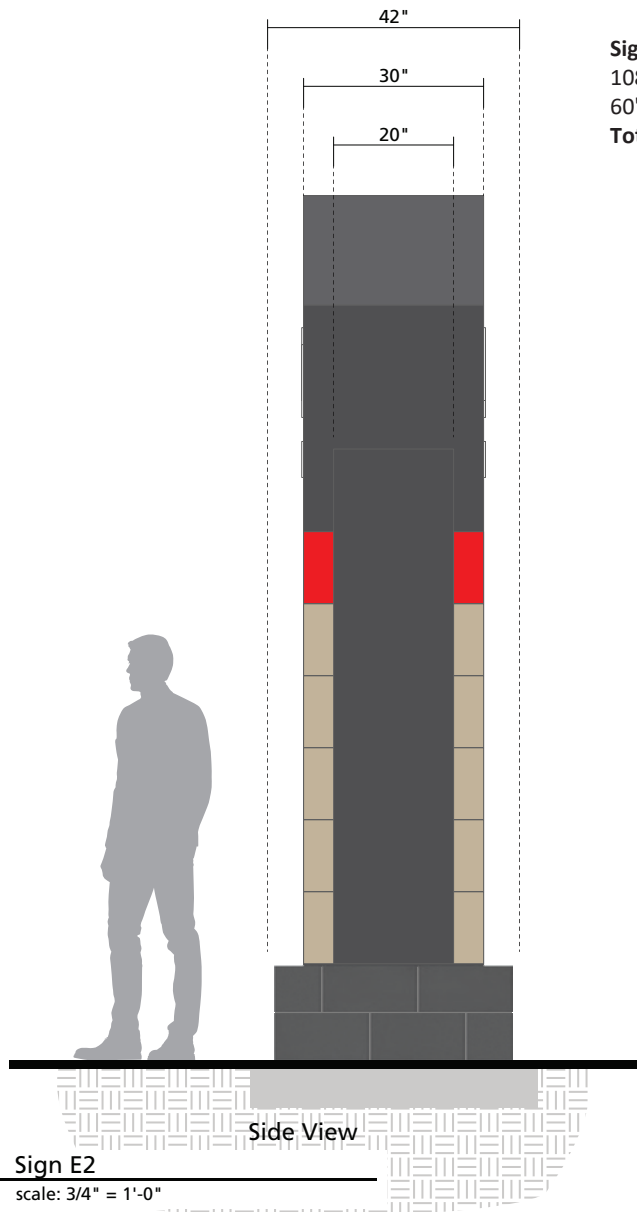
Date:

tm
gw

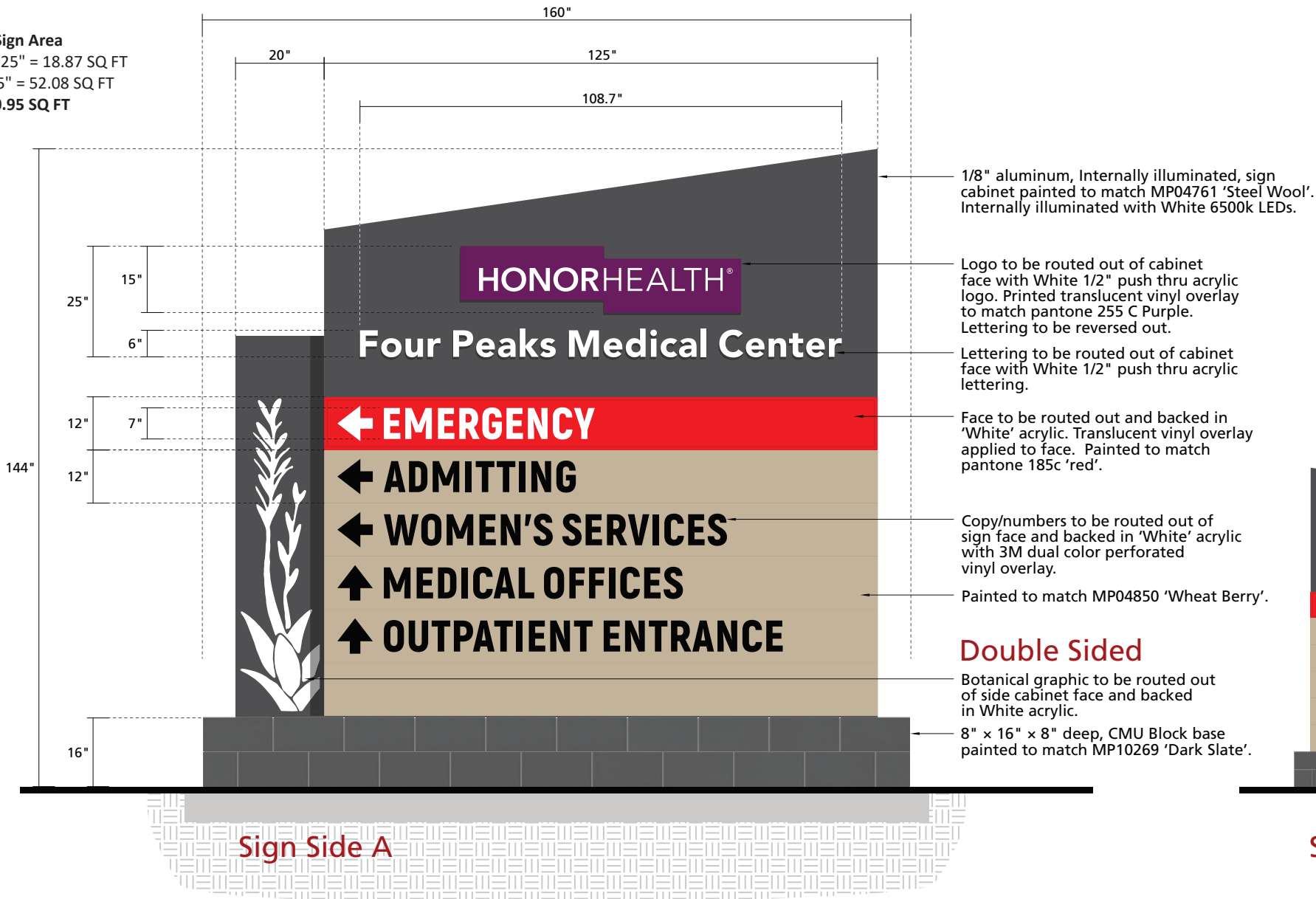
HonorHealth\
1301 S Crismon Rd, Mesa
HonorHealth Directional Monument

12.02.25

3
PAGE



Sign E2 Sign Area
108.7" x 25" = 18.87 SQ FT
60" x 125" = 52.08 SQ FT
Total: 70.95 SQ FT



Elevation Photo



Illuminated Sign at Night



Gretchen Wilde, owner / designer
1205 N. Miller Road
Tempe, AZ 85288
480.966.6565 / 480.966.5668 (f)
signs@airparksigns.com

1301 S. Crismon Rd.
Mesa, AZ 85209

NOTES: Entry Monument E2

Approved By:

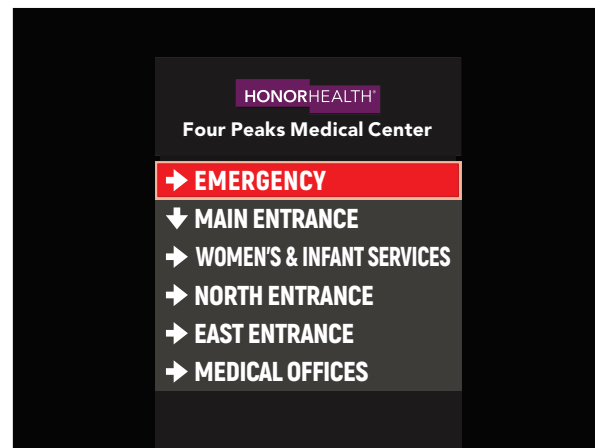
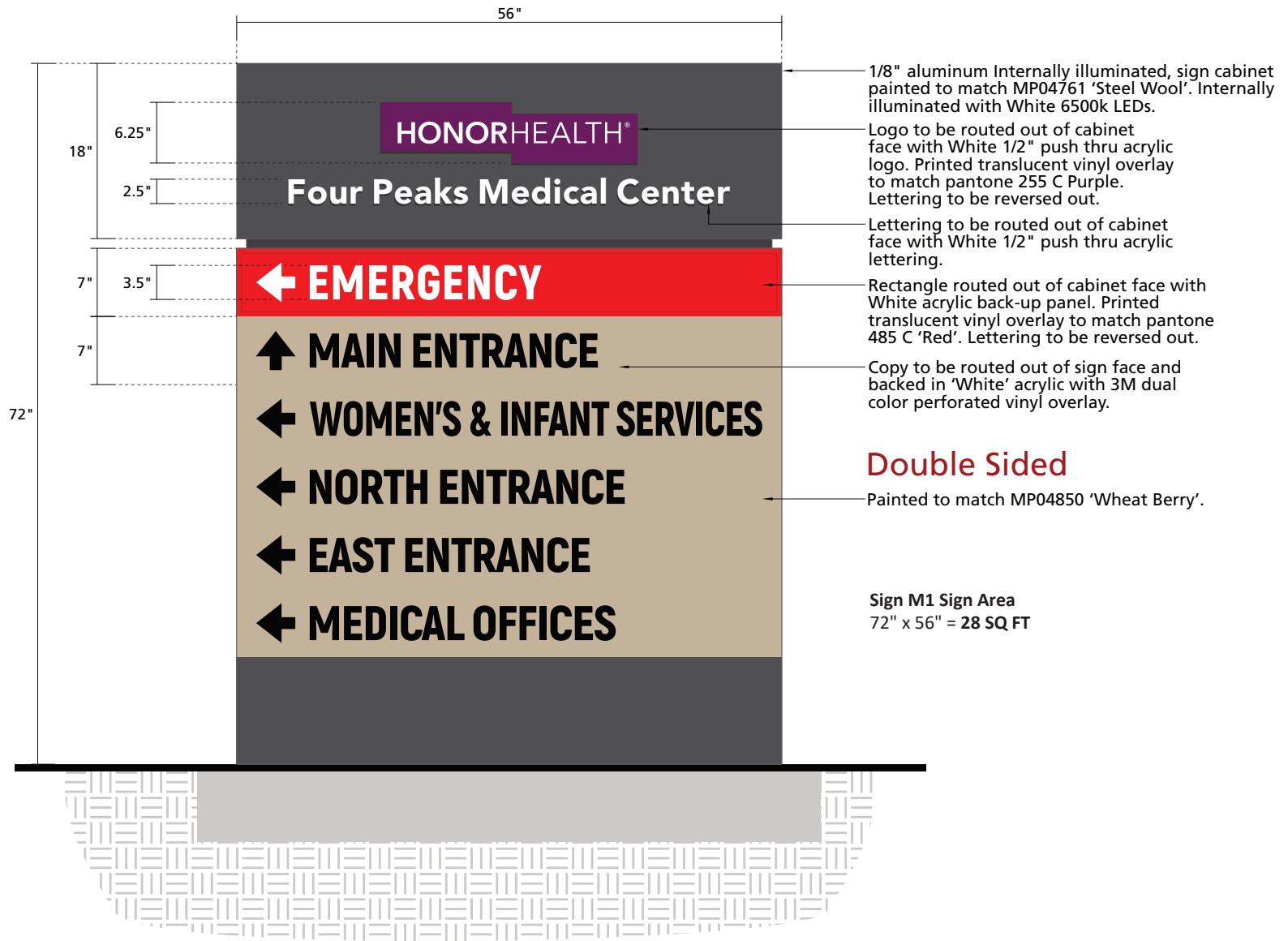
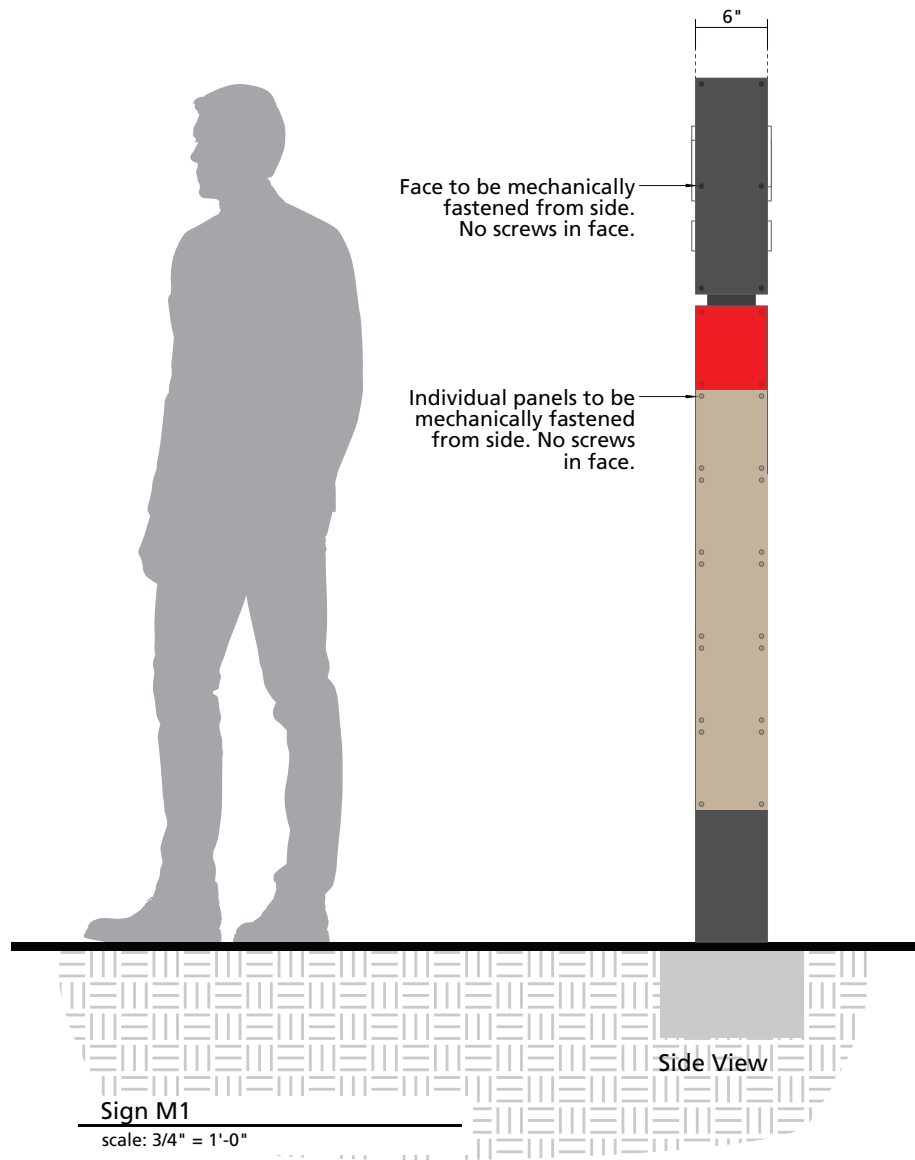
Date:

tm
gw

HonorHealth\
1301 S Crismon Rd, Mesa
HonorHealth Directional Monument

12.02.25

4
PAGE



Illuminated Sign at Night



Gretchen Wilde, owner / designer
1205 N. Miller Road
Tempe, AZ 85288
480.966.6565 / 480.966.5668 (f)
signs@airparksigns.com

1301 S. Crismon Rd.
Mesa, AZ 85209

NOTES: **Directional Monument M1**

Approved By: _____

Date: _____

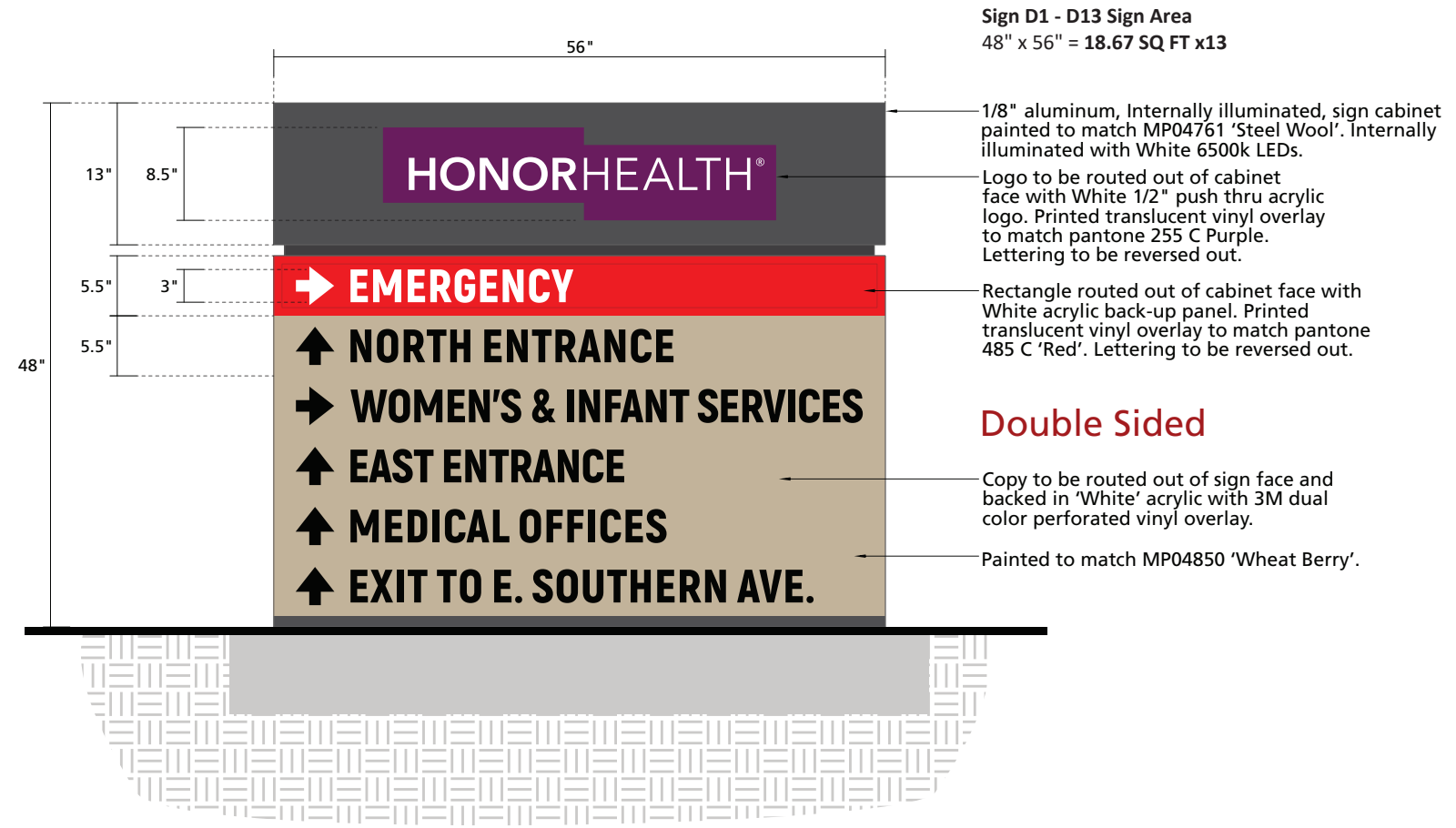
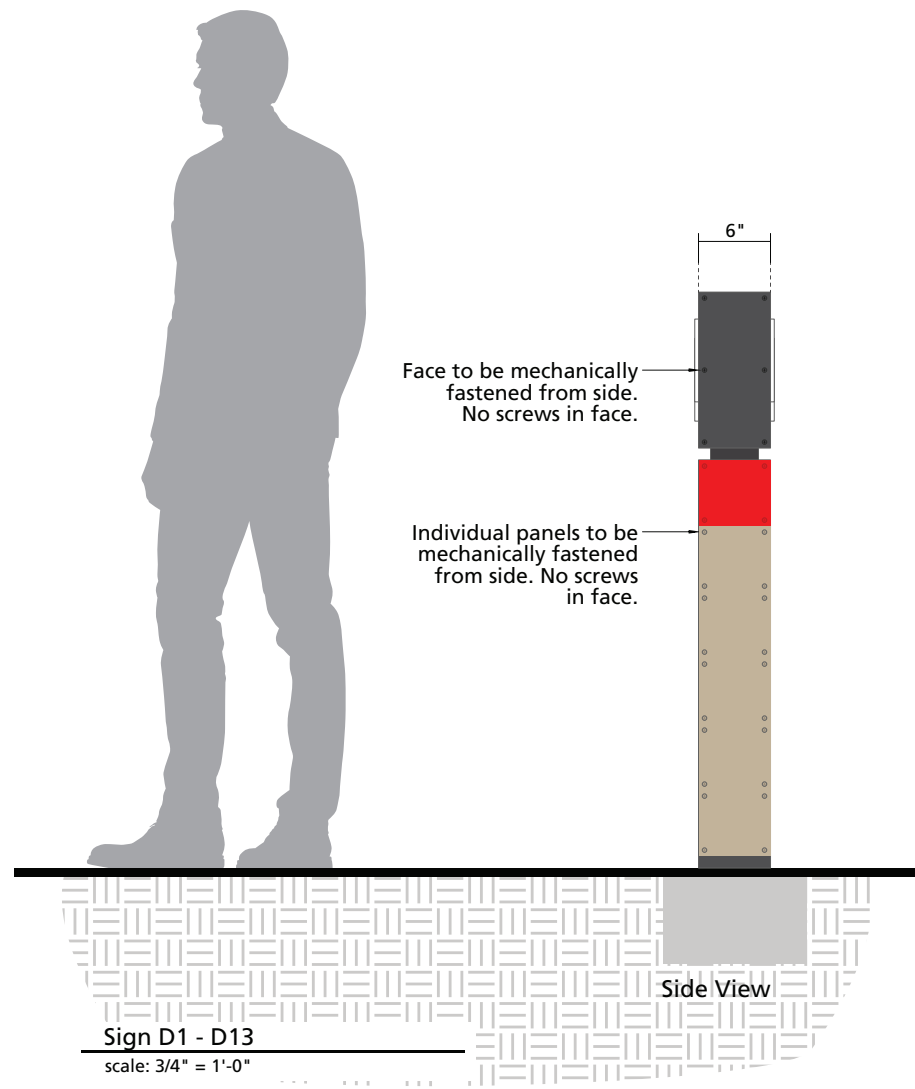
tm
gw

HonorHealth
1301 S Crismon Rd, Mesa

HonorHealth Small Directional Monument

12.02.25

5a
PAGE



Illuminated Sign at Night

All specified details on these drawings are subject to change due to the availability of materials and/or changes in the method of fabrication. Airpark signs & graphics will do their best to maintain the designs intent of these drawings at all times. If the owner or owners' s representative wishes to receive detail drawings on all changes during the fabrication process, airpark signs & graphics must be Advised in writing prior to the start of fabrication. This is an original unpublished drawing created by airpark signs and graphics. It is submitted for your personal use in connection with a proposed project being planned for you by airpark signs and graphics. It is not to be reproduced, copied, photographed, exhibited or used in any fashion without expressed written approval of airpark signs and graphics.

HONORHEALTH®

→ EMERGENCY

↑ NORTH ENTRANCE

→ WOMEN'S & INFANT SERVICES

↑ EAST ENTRANCE

↑ MEDICAL OFFICES

↑ EXIT TO E. SOUTHERN AVE.

Sign# D1 | Side A

HONORHEALTH®

← EMERGENCY

← MAIN ENTRANCE

→ EXIT TO S. CRISMON RD.

↑ MEDICAL OFFICES

↑ EAST ENTRANCE

← WOMEN'S & INFANT SERVICES

Sign# D1 | Side B

HONORHEALTH®

→ EMERGENCY

→ NORTH ENTRANCE

← EAST ENTRANCE

← MEDICAL OFFICES

→ EXIT TO E. SOUTHERN AVE.

→ SHIPPING & RECEIVING

Sign# D2 | Side A

HONORHEALTH®

↑ EMERGENCY

↑ MAIN ENTRANCE

→ MEDICAL OFFICES

→ EAST ENTRANCE

↑ WOMEN'S & INFANT SERVICES

Sign# D2 | Side B

HONORHEALTH®

← EMERGENCY

↑ MAIN ENTRANCE

← NORTH ENTRANCE

→ EAST ENTRANCE

→ MEDICAL OFFICES

Sign# D3 | Side A

HONORHEALTH®

→ EMERGENCY

→ NORTH ENTRANCE

← MEDICAL OFFICES

← EAST ENTRANCE

↑ EXIT TO E. HAMPTON AVE.

→ SHIPPING & RECEIVING

Sign# D3 | Side B

HONORHEALTH®

→ EMERGENCY

→ MAIN ENTRANCE

↑ EXIT TO E. HAMPTON AVE.

→ WOMEN'S & INFANT SERVICES

Sign# D4 | Side A

HONORHEALTH®

← EMERGENCY

← MAIN ENTRANCE

→ MEDICAL OFFICES

→ EAST ENTRANCE

← WOMEN'S & INFANT SERVICES

Sign# D4 | Side B

HONORHEALTH®

← EMERGENCY

↑ MAIN ENTRANCE

→ MEDICAL OFFICES

→ EAST ENTRANCE

Sign# D5 | Side A

HONORHEALTH®

→ EMERGENCY

← MEDICAL OFFICES

← EAST ENTRANCE

↑ EXIT TO E. HAMPTON AVE.

Sign# D5 | Side B

HONORHEALTH®

↑ EMERGENCY

→ MAIN ENTRANCE

↑ EXIT TO E. HAMPTON AVE.

Sign# D6 | Side A

HONORHEALTH®

↓ EMERGENCY

← MAIN ENTRANCE

Sign# D6 | Side B

HONORHEALTH®

↑ EMERGENCY

↑ MAIN ENTRANCE

↑ WOMEN'S & INFANT SERVICES

Sign# D7 | Side A

HONORHEALTH®

↓ EMERGENCY

↑ MEDICAL OFFICES

↑ EAST ENTRANCE

↑ NORTH ENTRANCE

Sign# D7 | Side B

HONORHEALTH®

↓ EMERGENCY

↑ MEDICAL OFFICES

↑ EAST ENTRANCE

→ EXIT TO E. HAMPTON AVE.

Sign# D8 | Side A

HONORHEALTH®

↑ EMERGENCY

↑ MAIN ENTRANCE

↑ WOMEN'S & INFANT SERVICES

Sign# D8 | Side B

HONORHEALTH®

↓ EMERGENCY

← EAST ENTRANCE

← NORTH ENTRANCE

← MEDICAL OFFICES

← SHIPPING & RECEIVING

Sign# D9 | Side A

HONORHEALTH®

↑ EMERGENCY

↑ MAIN ENTRANCE

→ MEDICAL OFFICES

→ EAST ENTRANCE

→ NORTH ENTRANCE

→ SHIPPING & RECEIVING

Sign# D9 | Side B

HONORHEALTH®

→ EMERGENCY

→ MAIN ENTRANCE

↑ EXIT TO E. HAMPTON AVE.

→ WOMEN'S & INFANT SERVICES

Sign# D10 | Side A

HONORHEALTH®

← EMERGENCY

← MAIN ENTRANCE

↑ MEDICAL OFFICES

↑ EAST ENTRANCE

↑ NORTH ENTRANCE

← WOMEN'S & INFANT SERVICES

Sign# D10 | Side B

HONORHEALTH®

↑ EMERGENCY

↑ MAIN ENTRANCE

↑ MEDICAL OFFICES

→ EAST ENTRANCE

↑ WOMEN'S & INFANT SERVICES

Sign# D11 | Side A

HONORHEALTH®

↓ EMERGENCY

← EAST ENTRANCE

↑ NORTH ENTRANCE

↑ EXIT TO E. SOUTHERN AVE.

↑ SHIPPING & RECEIVING

Sign# D11 | Side B

HONORHEALTH®

→ NORTH ENTRANCE

↑ EAST ENTRANCE

↑ MEDICAL OFFICES

→ SHIPPING & RECEIVING

Sign# D12 | Side A

HONORHEALTH®

← NORTH ENTRANCE

↑ EXIT TO E. SOUTHERN AVE.

← SHIPPING & RECEIVING

Sign# D12 | Side B

HONORHEALTH®

↓ EMERGENCY

→ NORTH ENTRANCE

→ EAST ENTRANCE

→ MEDICAL OFFICES

→ SHIPPING & RECEIVING

Sign# D13 | Side A

HONORHEALTH®

↑ EMERGENCY

↑ MAIN ENTRANCE

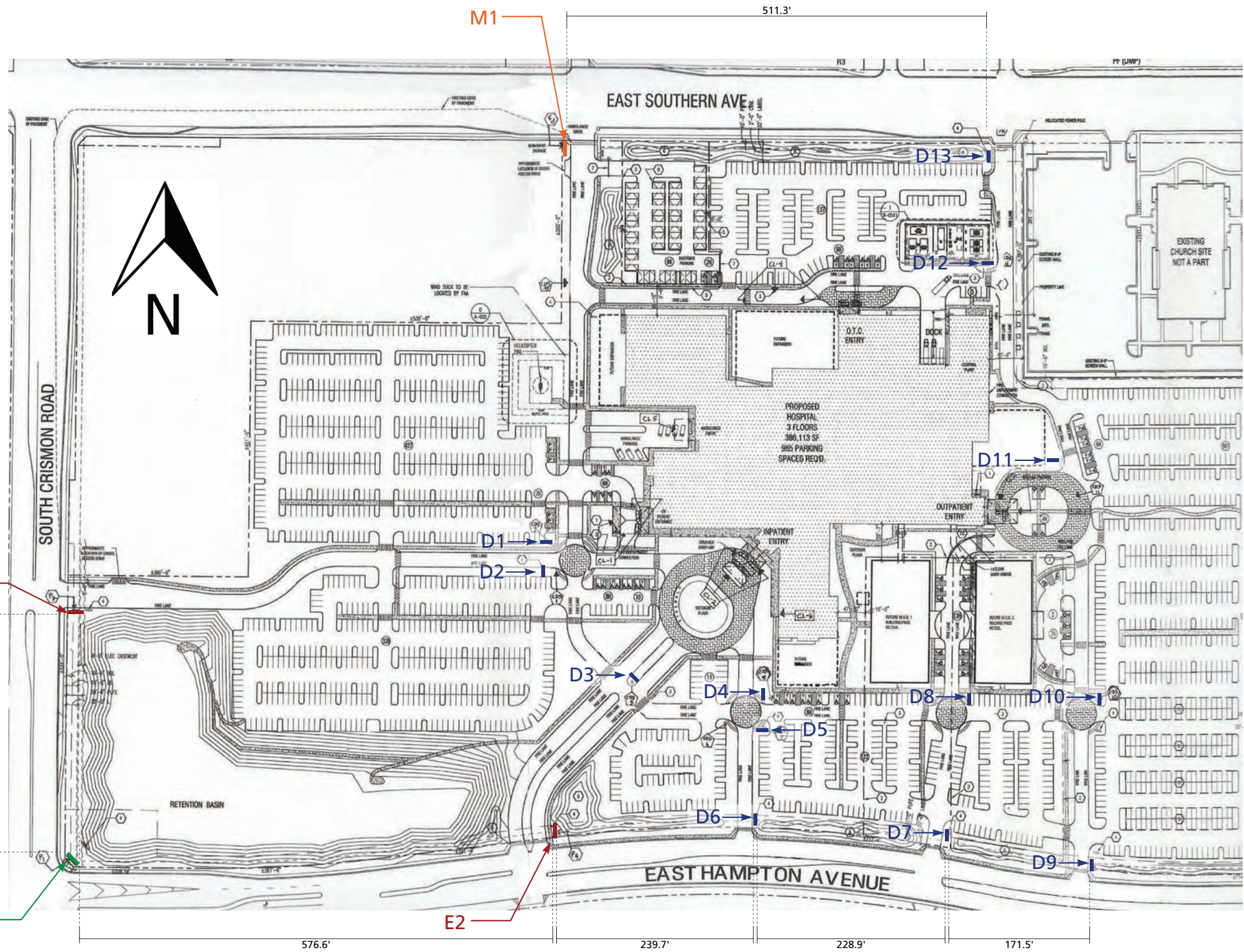
↑ WOMEN'S & INFANT SERVICES

← NORTH ENTRANCE

← EAST ENTRANCE

← MEDICAL OFFICES

Sign# D13 | Side B



Map Key

- Campus Monument
- Entry Monument
- M1 Directional Monument
- D1 - D13 Directional Sign

Campus Monument



Gretchen Wilde, owner / designer
1205 N. Miller Road
Tempe, AZ 85288
480.966.6565 / 480.966.5668 (f)
signs@airparksigns.com

1301 S. Crismon Rd.
Mesa, AZ 85209

NOTES: Sign Location Map

Approved By:

Date:

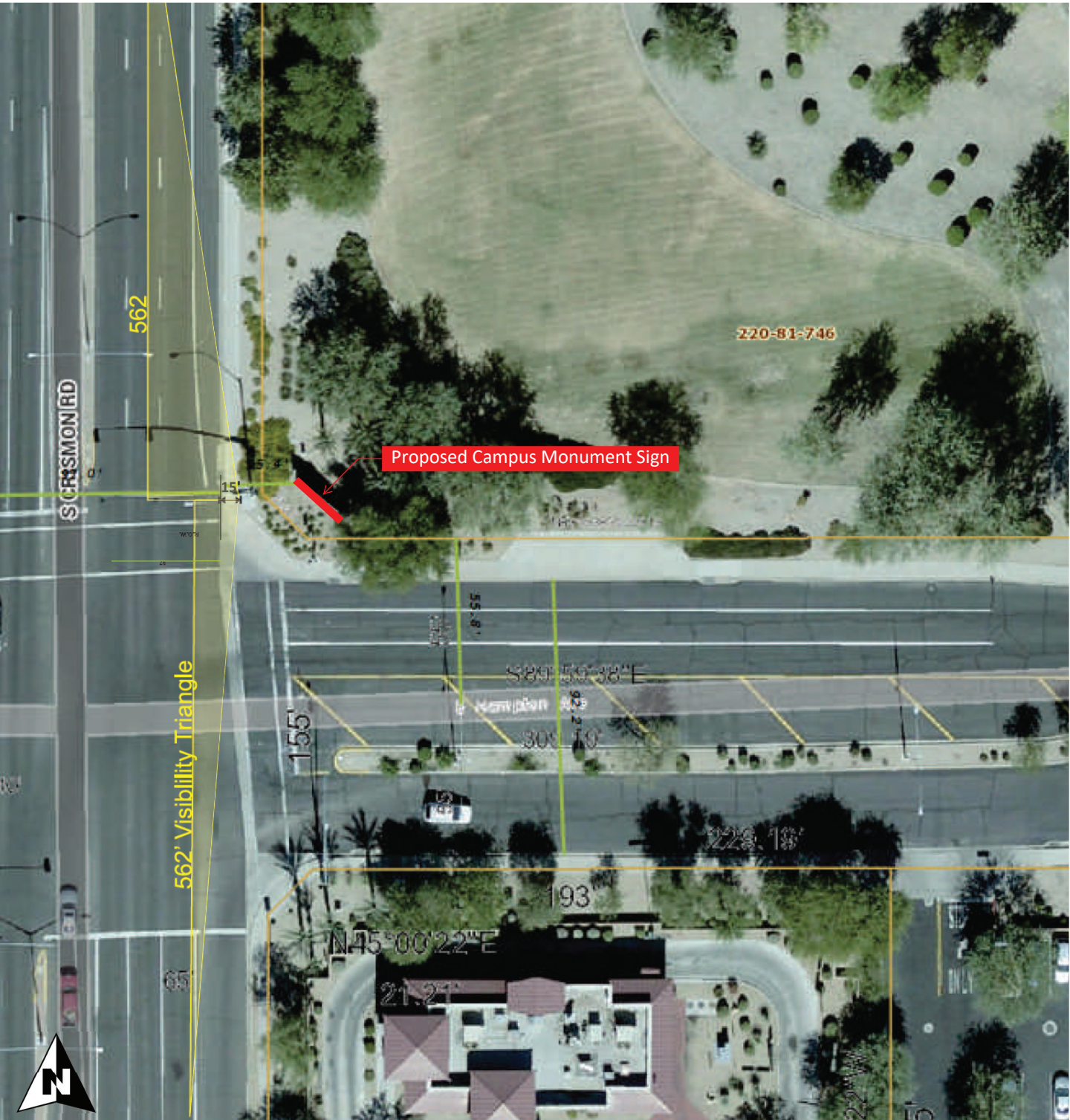
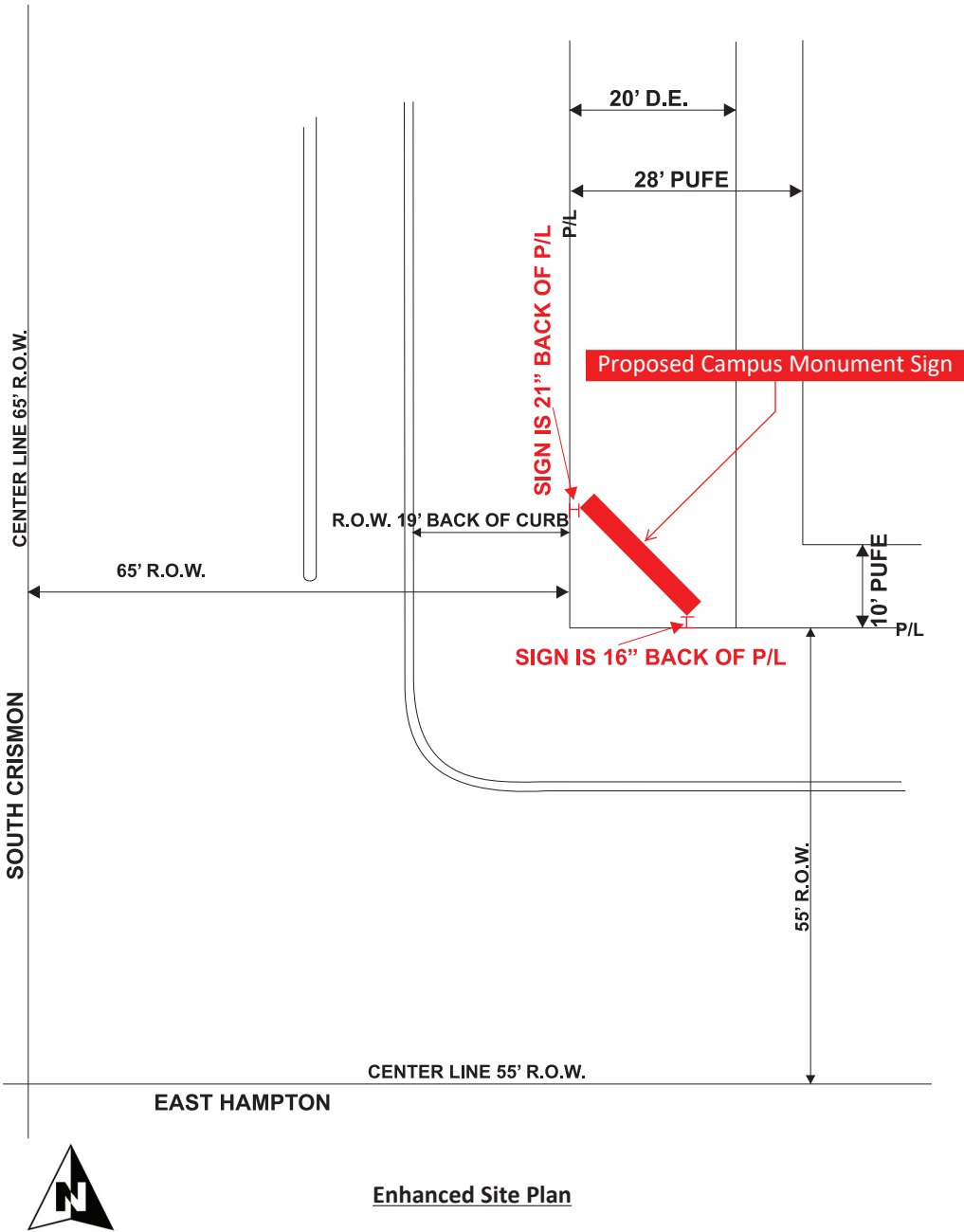
trc
gw

HonorHealth
1301 S Crismon Rd, Mesa
Sign Location Map

12.02.25

6
PAGE

Campus Monument Sign
Enhanced Site Plan



Sight Visibility Triangle Exhibit



Gretchen Wilde, owner / designer
1205 N. Miller Road
Tempe, AZ 85288
480.966.6565 / 480.966.5668 (f)
signs@airparksigns.com

1301 S. Crismon Rd.
Mesa, AZ 85209

NOTES: **Enhanced Site Plan - Campus Monument**

Approved By:

Date:

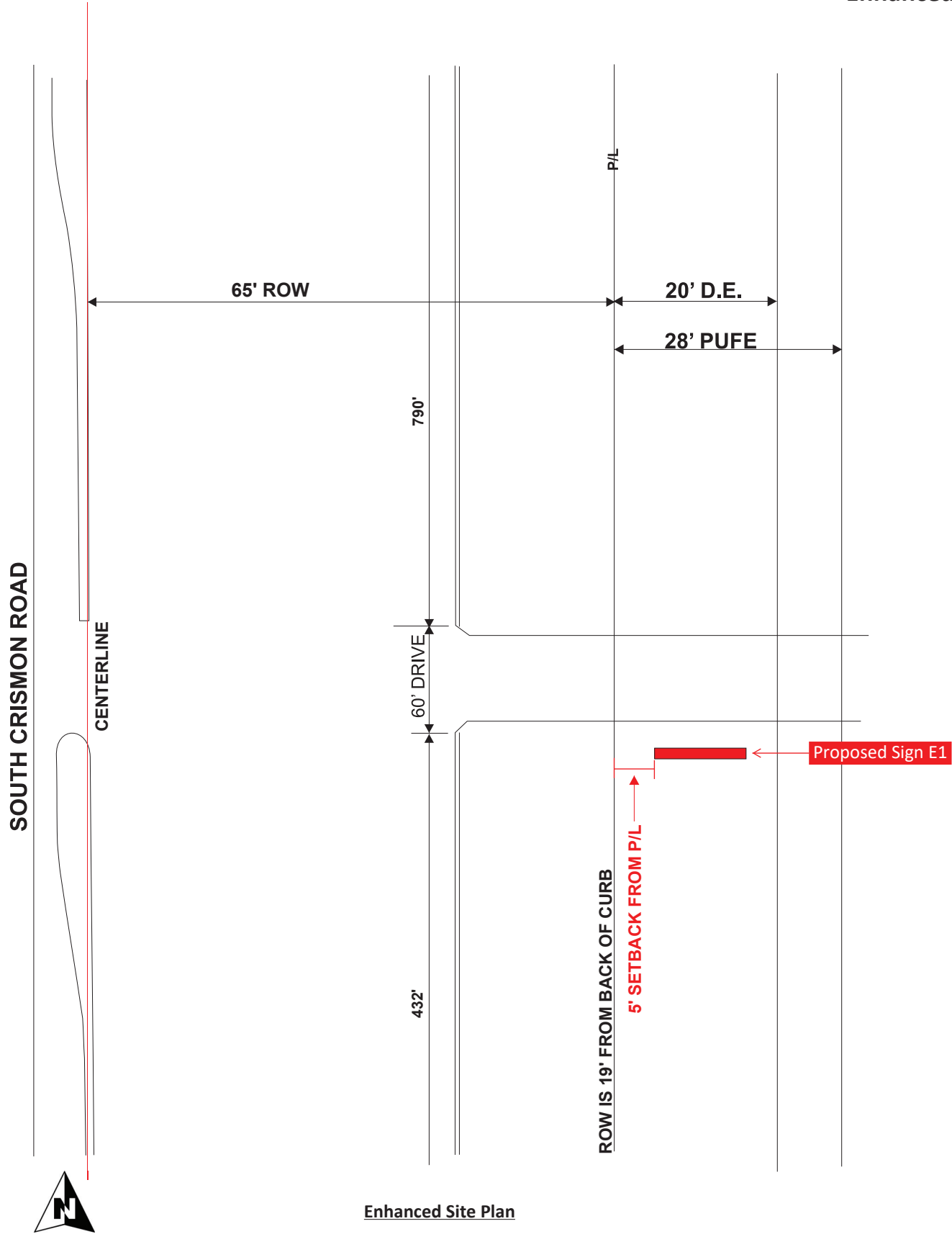
trc
gw

HonorHealth
1301 S Crismon Rd, Mesa
Enhanced Site Plan

12.02.25

7
PAGE

Monument Sign E1
Enhanced Site Plan



Enhanced Site Plan



Sight Visibility Triangle Exhibit



Gretchen Wilde, owner / designer
1205 N. Miller Road
Tempe, AZ 85288
480.966.6565 / 480.966.5668 (f)
signs@airparksigns.com

1301 S. Crismon Rd.
Mesa, AZ 85209

NOTES: **Enhanced Site Plan - Entry Monument E1**

Approved By:

Date:

trc
gw

HonorHealth\
1301 S Crismon Rd, Mesa
Enhanced Site Plan

12.02.25

8
PAGE

All specified details on these drawings are subject to change due to the availability of materials and/or changes in the method of fabrication. Airpark signs & graphics will do their best to maintain the designs intent of these drawings at all times. If the owner or owners's representative wishes to receive detail drawings on all changes during the fabrication process, airpark signs & graphics must be advised in writing prior to the start of fabrication. This is an original unpublished drawing created by airpark signs and graphics. It is submitted for your personal use in connection with a proposed project being planned for you by airpark signs and graphics. It is not to be reproduced, copied, photographed, exhibited or used in any fashion without expressed written approval of airpark signs and graphics.

The diagram illustrates the proposed placement of Sign E2 on the east side of the road. Key features and dimensions include:

- Proposed Sign E2:** A red rectangular sign located 5 feet from the fire hydrant.
- Fire Hydrant:** Marked with a yellow circle, located 19 feet from the curb.
- Setbacks:**
 - Sign is 1'-0" back of P/L (Proposed Line).
 - P/L is 18'-6" back of curb.
 - R.O.W. is 18'-6" back of curb.
- Other Dimensions:**
 - PUFE is 10' back of P/L.
 - Center line is 55' R.O.W.
 - Sign is 852' E. from Crismon to Sign.

EAST HAMPTON

Enhanced Site Plan



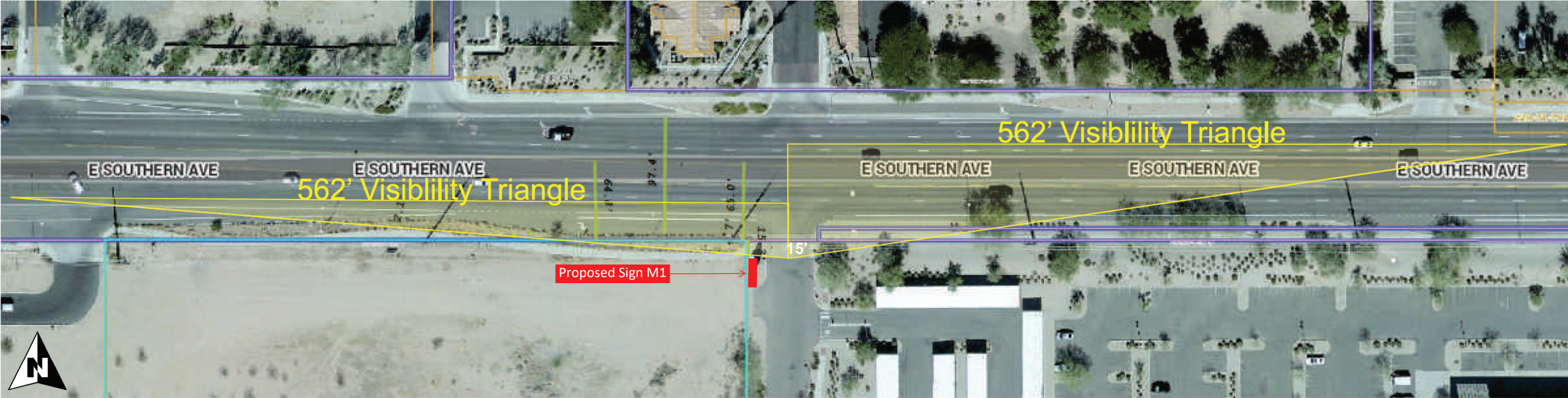
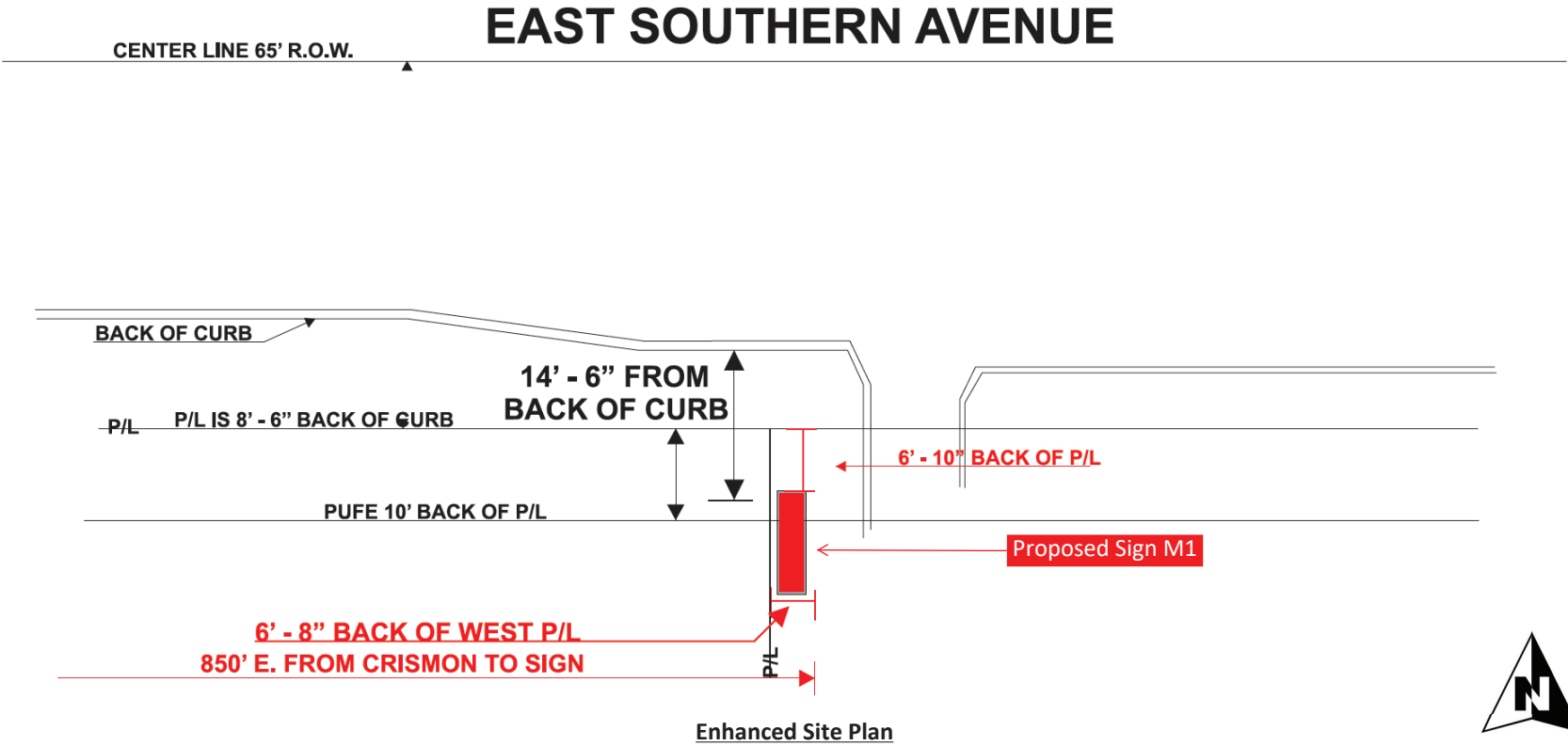
NOTES: **Enhanced Site Plan - Entry Monument E2**

HonorHealth\
1301 S Crismon Rd, Mesa
Enhanced Site Plan


9
PAGE

All specified details on these drawings are subject to change due to the availability of materials and in the method of fabrication. Airpark signs & graphics will do their best to maintain the designs intent of these drawings at all times. If the owner or owners' representative wishes to receive detail drawings on all changes during the fabrication process, airpark signs & graphics must be advised in writing prior to the start of fabrication. This is an original unpublished drawing created by airpark signs and graphics. It is submitted for your personal use in connection with a proposed project being planned for you by airpark signs and graphics. It is not to be reproduced, copied, photographed, exhibited or used in any fashion without expressed written approval of airpark signs and graphics.

Monument Sign M1
Enhanced Site Plan



Sight Visibility Triangle Exhibit

 <p>Gretchen Wilde, owner / designer 1205 N. Miller Road Tempe, AZ 85288 480.966.6565 / 480.966.5668 (f) signs@airparksigns.com</p>	<p>1301 S. Crismon Rd. Mesa, AZ 85209</p>	<p>NOTES: Enhanced Site Plan - Directional Monument M1</p> <p>Approved By: _____ Date: _____</p>	<p>trc gw</p>	<p>HonorHealth\ 1301 S Crismon Rd, Mesa Enhanced Site Plan</p>	<p>12.02.25 10 PAGE</p>
---	---	---	-------------------	---	--

All specified details on these drawings are subject to change due to the availability of materials and/or changes in the method of fabrication. Airpark signs & graphics will do their best to maintain the designs intent of these drawings at all times. If the owner or owners' s representative wishes to receive detail drawings on all changes during the fabrication process, airpark signs & graphics must be advised in writing prior to the start of fabrication. This is an original unpublished drawing created by airpark signs and graphics. It is submitted for your personal use in connection with a proposed project being planned for you by airpark signs and graphics. It is not to be reproduced, copied, photographed, exhibited or used in any fashion without expressed written approval of airpark signs and graphics.