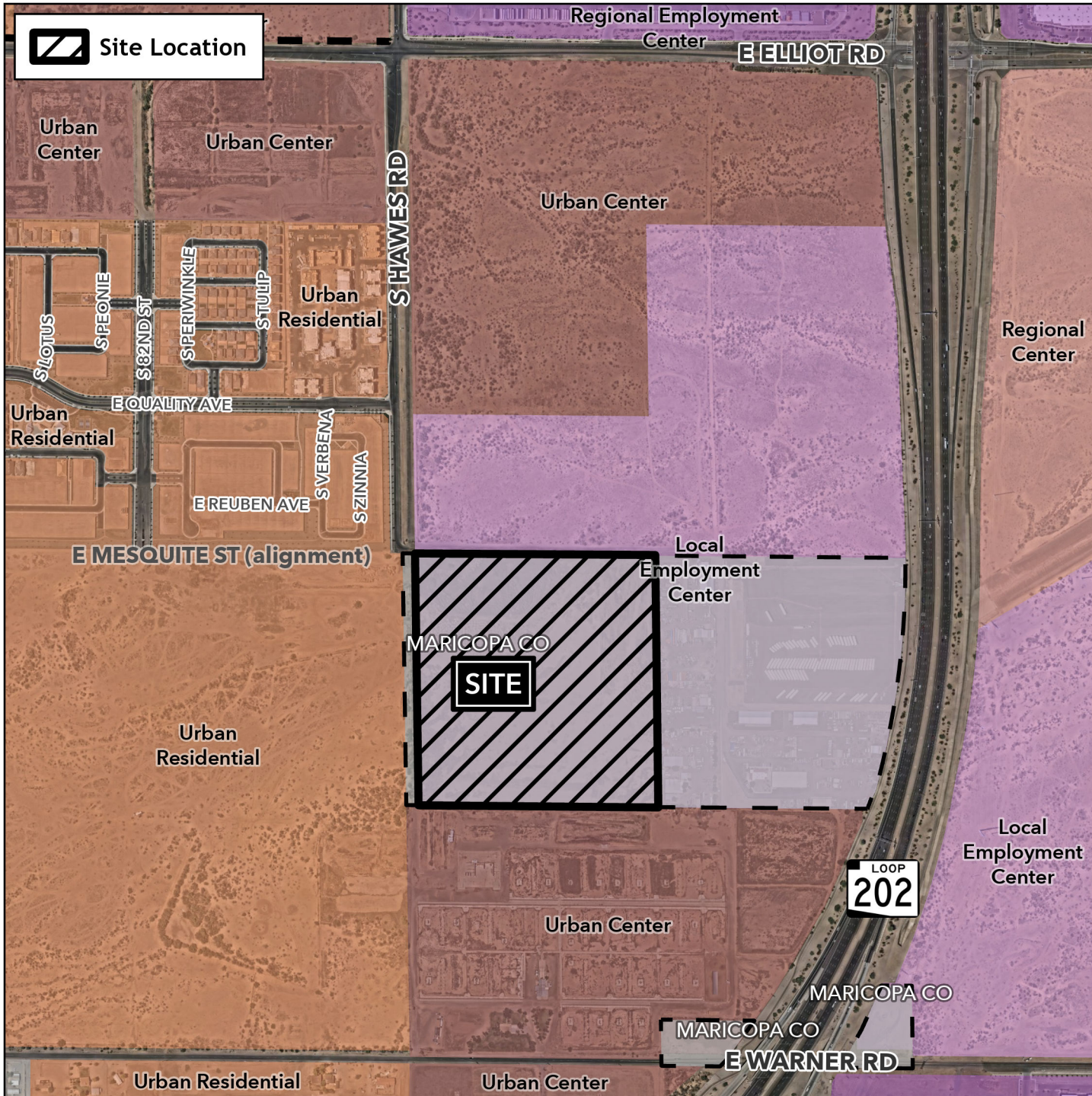


# Planning and Zoning Vicinity Map: GPA25-00233

## Case Details



Site Location



### Case:

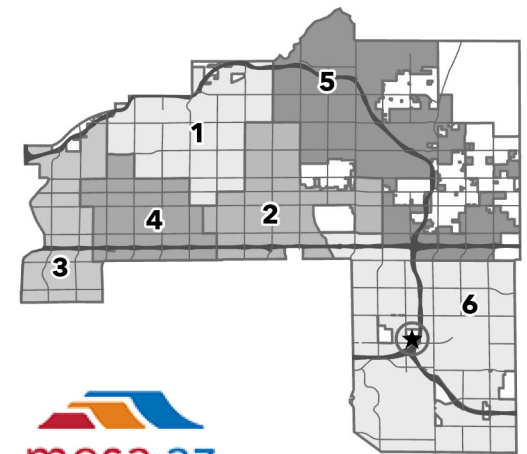
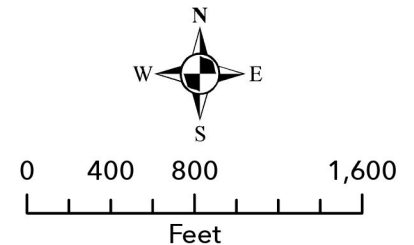
GPA25-00233

### Site / Address:

(District 6). 38± acres located at the southeast corner of South Hawes Road and East Mesquite Street.

### Request:

Major General Plan Amendment to change the Placetype from Local Employment Center to Urban Residential.



mesa·az