




CITY COUNCIL STUDY SESSION | Feb 1, 2024



# CLIMATE ACTION PLAN

For a Sustainable Community

CITY OF MESA CLIMATE ACTION UPDATE

Scott Bouchie, Energy & Sustainability Director  
 Laura Hyneman, Deputy Director, Environmental & Sustainability





# Trees Are Cool – 1 M Trees Initiative

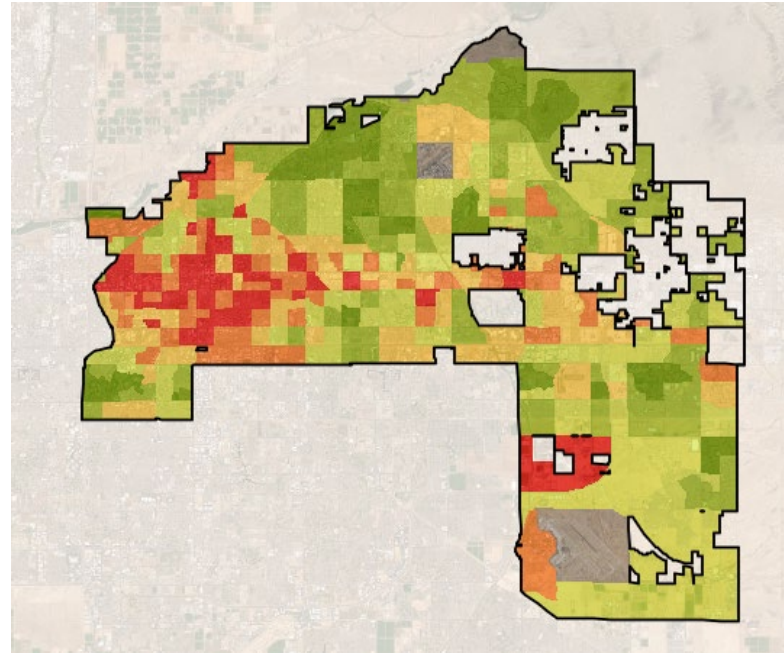
- Mesa’s Shade Tree Programs
- ~1,845 city owned trees recorded
- ~6,283 community trees recorded
  - Trees Planted Database
- Corporate sponsors
- Partnership with Mesa Public Schools – IRA grant funded

Focus Area Targets: 1.1, 2.1, 3.1, 3.2, 3.3, 4.1



# Ahead: Trees Are Cool – 1 M Trees Initiative

- Urban Forest Program Manager
- Shade corridors
- Green stormwater infrastructure
- Policies and programs
- Funding opportunities



Focus Area Targets: 1.1, 2.1, 2.2, 3.1, 3.2, 3.3, 4.1 4.3

CITY OF MESA CLIMATE ACTION PLAN: FOR A SUSTAINABLE COMMUNITY



# Clean Energy

- Mesa Electric Utility & SRP
- Distributed and utility scale renewable energy generation
- Clean, safe, reliable, affordable
- Efficiency programs
- ~25% clean energy by 2025

Focus Area Targets: 1.1, 1.3, 1.4



CITY OF MESA CLIMATE ACTION PLAN: FOR A SUSTAINABLE COMMUNITY

# SRP Solar Choice Select



- Offset a portion of City's electric use with renewable energy
- Increase amount of renewable energy used by City operations to ~25%
- \$0.005/kWh premium
- ~\$76,000/year
- One year minimum commitment

Focus Area Targets: 1.1, 1.3, 1.4

CITY OF MESA CLIMATE ACTION PLAN: FOR A SUSTAINABLE COMMUNITY

6



# Energy Efficiency



- Energy audits
- System upgrades
- Lighting retrofits
- Building controls – Facility Automation
- Tracking energy consumption

Focus Area Targets: 1.1, 1.3. 1.4



# Ahead: Building Codes

- Resilient Southwest Building Code Collaborative – regionally adapted building codes focused on heat, energy, water, carbon reduction
- Coalition approach
- Implementation support
- Community engagement
- Grant funded – IJA DOE

Focus Area Targets: 1.1, 1.3, 3.1, 3.2, 4.1, 5.1, 5.2



# Electrification

- Community
  - \$11.8 M EV Charging Grant
  - Public – Private Partnerships
- Fleet conversion
  - Master Plan
  - Vehicles and chargers
  - Funding opportunities

Focus Area Targets: 1.2, 1.3, 2.1





# Ahead: Materials Management

- Materials Recovery Facility
- Food Waste to Energy
  - Phase 1 Flare to Fuel - Construction
  - Phase 2 – Design and Construction
- Grant funding opportunities



Focus Area Targets: 1.3, 5.1, 5.2, 6.4

CITY OF MESA CLIMATE ACTION PLAN: FOR A SUSTAINABLE COMMUNITY

10

# Water Conservation

- Water consumption data analysis
- Expanding Conservation Incentive Programs
- Water – Use It Wisely and Community Engagement
- New campaign





**We know that environmental transparency is crucial for a sustainable future.**



# Grant Funding

Grant	Purpose	Amount	Lead Agency
DOE	Resilient Southwest Building Code Collaborative	\$3.5 M	New Buildings Institute
DOE	Southwest Integrated Field Lab – Urban Heat	\$25 M	ASU/U of A/NAU
DOT	Communitywide EV charging	\$11.8 M	Mesa
WIFA	Water Conservation in Parks	\$1 M	Mesa
WIFA	Community Water Conservation	\$900 K	Mesa
USDA	Urban Forestry Program Mesa Public Schools students	\$825 K	Mesa
SRPMIC	Million Tree Initiative – shade along streets	\$38 K	Mesa
DOE	Energy Efficiency Community Block Grant	\$450 K	Mesa
EPA	Climate Pollution Reduction Grant Implementation	~\$70 – 80 M	Coalition
	Solar for All		State





# Questions?





mesa·az



# MCAP Funding Summary – FY 22/23

Project	Approved MCAP Funding	Expenditures to Date	Status
Community EV Master Plan	\$200,000	\$200,000	Complete
Flare to Fuel Project	\$4,910,484	\$4,910,484	Construction started
Lighting at City Buildings			
-Mesa Arts Center, P1	\$401,000	\$306,667	Complete
-Mesa City Plaza	\$415,000	\$252,814	Complete – awaiting final invoice
-Courthouse	\$210,000	\$0	Scoped
-Main Library	\$387,000	\$0	Initial Bid complete
Solar @ Red Mountain Ballfield	\$120,000	\$0	In design

# MCAP Funding Summary – FY 23/24

Project	Approved Funding	Expenditures to Date	Status
Biomass	\$344,500	\$0	Awaiting invoice
Lighting @ RM Ball Fields	\$2,152,000	\$1,996,000	Complete
Trees Are Cool	\$975,000	\$54,961	Programs underway
Food Waste to Energy Design	\$1,800,000	\$0	In Preliminary Design
WUIW Robust Plan + YWYI Campaign	\$100,000	\$80,000	Programs underway