



# Design Review Board



# DRB24-00105

## Agritainment District at Pioneer Crossing

Cassidy Welch, Senior Planner

May 14, 2024



# Request

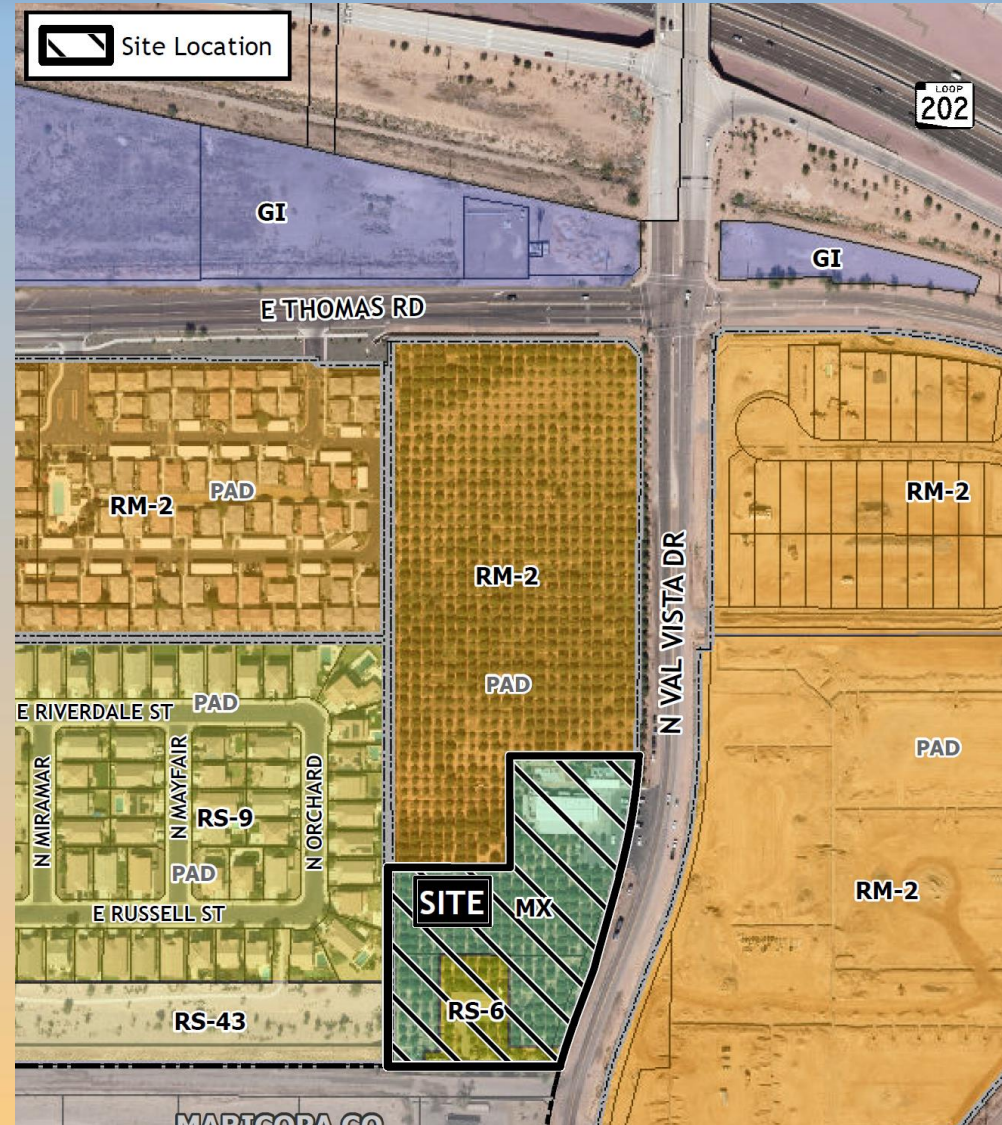
- Design Review
- To allow for an outdoor entertainment center





# Location

- South of Thomas Road
- West of Val Vista Drive





# Site Photos

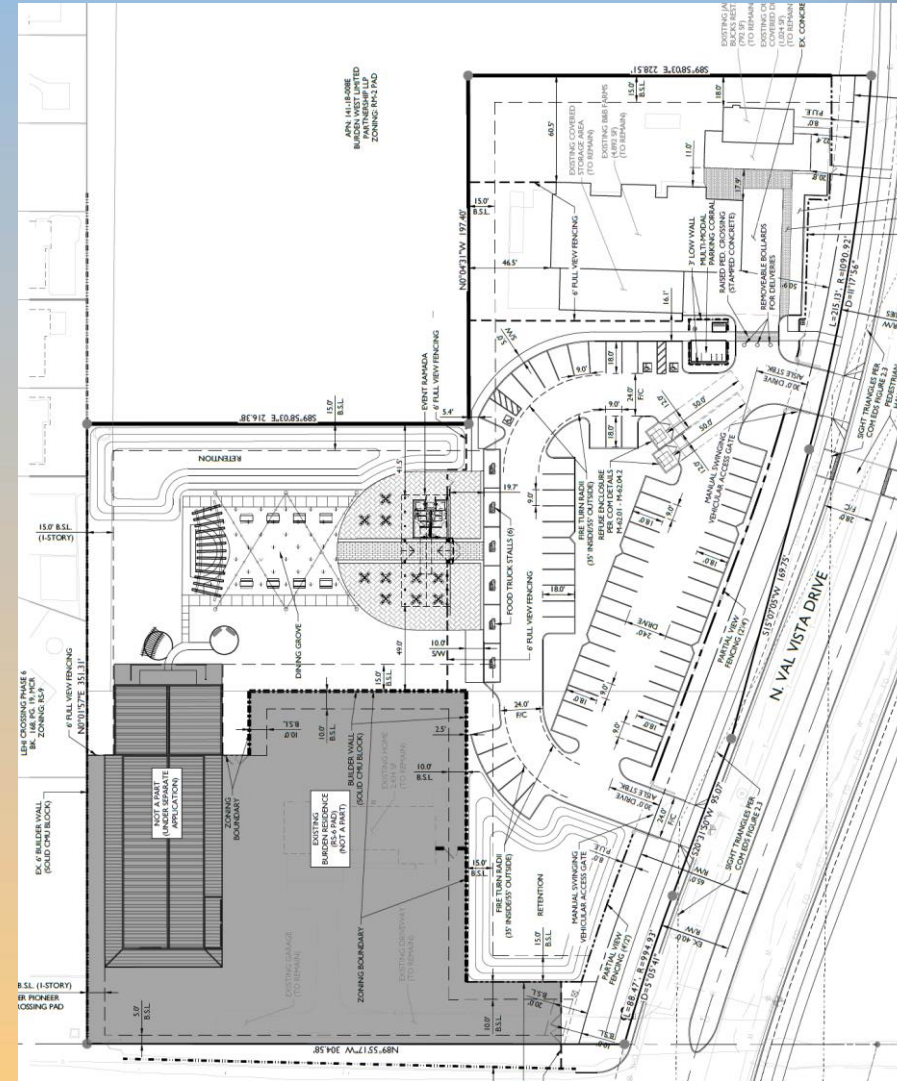


Looking west towards the site



# Site Plan

- New event ramada and outdoor dining grove
- Adjacent to Jalapeno Bucks and B&B Farms
- Access from Val Vista Drive





# Landscape Plan

## PLANT LEGEND

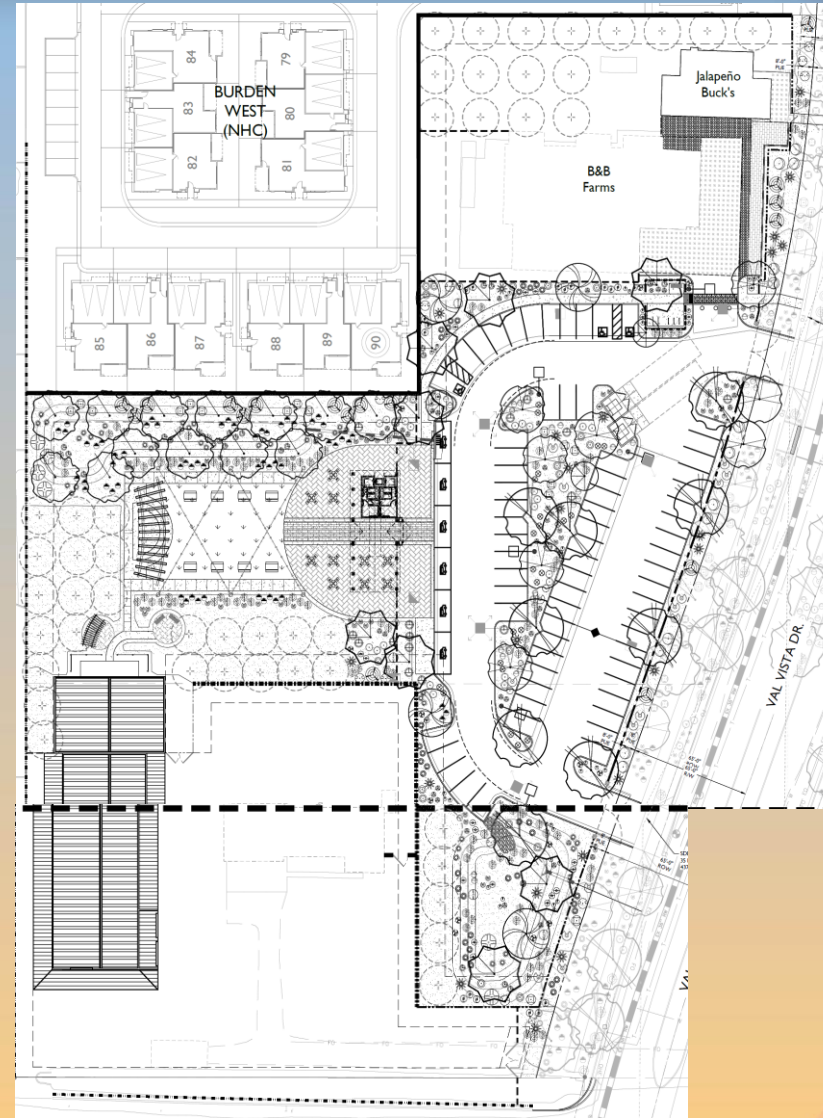
SYMBOL	SCIENTIFIC NAME	COMMON NAME	SIZE
<b>TREES</b>			
	<i>Acacia salicina</i>	Willow Acacia	24" / 36" Box
	<i>Olea europaea</i> 'Swan Hill'	'Swan Hill' Olive	24" / 36" Box
	<i>Parkinsonia</i> x 'Desert Museum'	Desert Museum Palo Verde	24" / 36" Box
	<i>Pistacia</i> 'Red Push'	Red Push Pistache	24" / 36" Box
	<i>Prosopis</i> hybrid 'Phoenix'	Thornless Mesquite	24" / 36" Box
	<i>Sophora</i> secundiflora	Texas Mountain Laurel	24" / 36" Box
	<i>Quercus virginiana</i> 'Heritage'	'Heritage' Live Oak	24" / 36" Box
	Existing Citrus Tree	Remain in Place	-

SYMBOL	COMMON NAME	SIZE	
	<i>Agave americana</i>	Century Plant	5 Gal
	<i>Agave geminiflora</i>	Twin Flowered Agave	5 Gal
	<i>Aloe</i> hybrid 'Blue Elf'	Blue Elf Aloe	5 Gal
	<i>Bougainvillea</i> 'La Jolla'	'La Jolla' Bougainvillea	5 Gal
	<i>Caesalpinia pulcherrima</i>	Red Bird of Paradise	5 Gal
	<i>Calliandra californica</i>	Baja Fairy Duster	5 Gal
	<i>Callistemon</i> x 'Little John'	Dwarf Callistemon	5 Gal
	<i>Dasyliroton quadrangulatum</i>	Mexican Grass Tree	5 Gal
	<i>Dodonea viscosa</i>	Hop Bush	5 Gal
	<i>Eremophila glabra</i> ssp. <i>Carnosa</i> 'Winter Blaze'	'Winter Blaze' Emu Bush	5 Gal
	<i>Eremophila hygrophana</i> 'Blue Bells'	Blue Bells	5 Gal
	<i>Euphorbia rigida</i>	Gopher Plant	5 Gal
	<i>Hesperaloe funifera</i>	Giant Hesperaloe	5 Gal
	<i>Hesperaloe parviflora</i> 'Brakelights'	Brakelights Red Yucca	5 Gal
	<i>Leucophyllum langmaniae</i> 'Lynn's Legacy'	Lynn's Legacy Sage	5 Gal
	<i>Muhlenbergia capillaris</i> 'Regal Mist'	'Regal Mist' Muhly	5 Gal
	<i>Muhlenbergia rigida</i> 'Nashville'	Purple Muhly	5 Gal
	<i>Pedilanthus macrocarpus</i>	Lady's Slipper	5 Gal
	<i>Ruellia peninsularis</i>	Desert Ruellia	5 Gal
	<i>Tecoma stans</i> 'Gold Star'	Yellow Bells	5 Gal

SYMBOL	COMMON NAME	SIZE	
	<i>Eremophila prostrata</i> 'Outback Sunrise'	'Outback Sunrise'	1 Gal
	<i>Lantana</i> x 'New Gold'	New Gold Lantana	1 Gal
	<i>Lantana montevidensis</i>	Trailing Purple Lantana	1 Gal
	<i>Rosmarinus officinalis</i> 'Huntington Carpet'	Tuscan Blue Rosemary	1 Gal

## MATERIAL

	<i>Cynodon dactylon</i> 'Midiron' Turf	
	Decomposed Granite Color Desert Brown CAE	1/2" Screened, 2" Depth





# Renderings







# Renderings





# Renderings





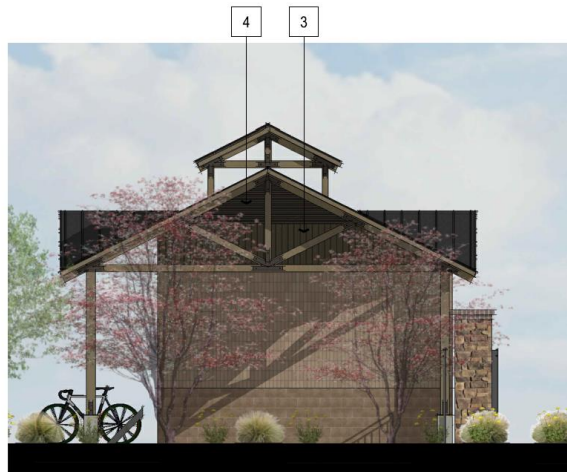
# Elevations



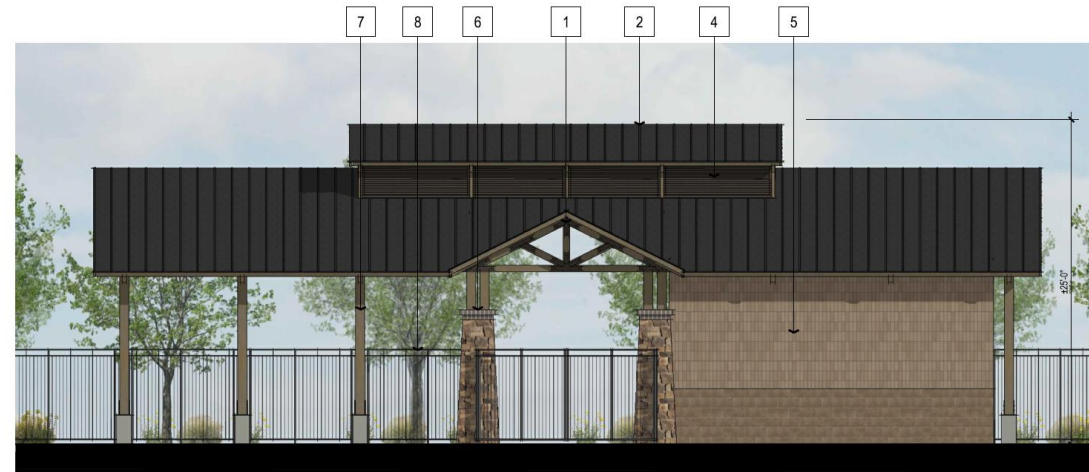
RIGHT ELEVATION



REAR ELEVATION



LEFT ELEVATION



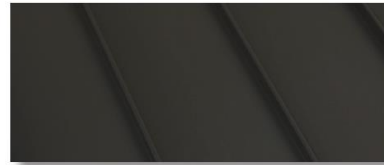
FRONT ELEVATION



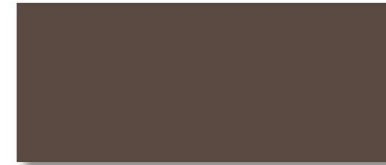
# Material Board



**POSTS, BEAMS, TRUSSES, & TRELLIS**  
SUPERIOR BRONZE (SW6152)



**STANDING SEAM METAL ROOF**  
COATED METALS GROUP - DARK BRONZE | STANDING SEAMS AT 16" O.C. | SMOOTH FINISH



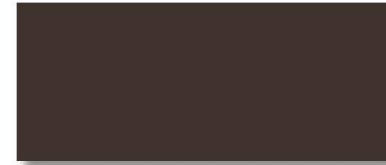
**VERTICAL SIDING - WOOD GRAIN CEMENTITIOUS**  
OTER (SW6041)



**METAL HARDWARE**  
IRON ORE (SW7069)



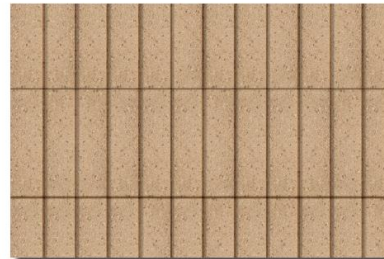
**METAL DOORS**  
URBANE BRONZE (SW7048)



**VENTS**  
BLACK BEAN (SW6006)



**CMU BLOCK | 8X8X16**  
ORCO - VARIEGATED SPLIT FACE BLOCK - TUSCANY, OR SIMILAR



**CMU FLUTED BLOCK | 8X8X16**  
ORCO - SHOTBLAST BLOCK - LA PAZ, OR SIMILAR



**BRICK**  
SUMMIT BRICK COMPANY - GRAPHITE, OR SIMILAR



**STONE**  
ELDORADO STONE - FIELDEDGE - VENERO, OR SIMILAR



# Findings

Staff is seeking your review and recommendation on the following:

- ✓ Proposed building elevations and landscape design

*Staff welcomes any feedback*



# Design Review Board