

A PORTION OF THE NORTHWEST QUARTER OF SECTION 19, TOWNSHIP 1 SOUTH, RANGE 7 EAST OF THE GILA AND SALT RIVER MERIDIAN, MARICOPA COUNTY, ARIZONA, MORE PARTICULARLY DESCRIBED AS FOLLOWS:

THENCE ALONG THE NORTH LINE OF SAID NORTHWEST QUARTER OF SECTION 19, SOUTH 89 DEGREES 40 MINUTES 50 SECONDS EAST, 1205.59 FEET TO A POINT ON THE WEST LINE OF THE EAST HALF OF SAID NORTHWEST QUARTER;

THENCE SOUTH 89 DEGREES 40 MINUTES 50 SECONDS EAST, 100.06 FEET ALONG SAID LINE

THENCE SOUTH 89 DEGREES 40 MINUTES 50 SECONDS EAST, 223.52 FEET, TO THE WESTERLY RIGHT OF WAY LINE OF THE ROOSEVELT WATER CONSERVATION DISTRICT (RWCD) MAIN CANAL;

THENCE SOUTH 89 DEGREES 05 MINUTES 06 SECONDS WEST, 881.33 FEET TO THE BEGINNING OF A CURVE, CONCAVE SOUTHEAST, HAVING A RADIUS OF 200.00 FEET;

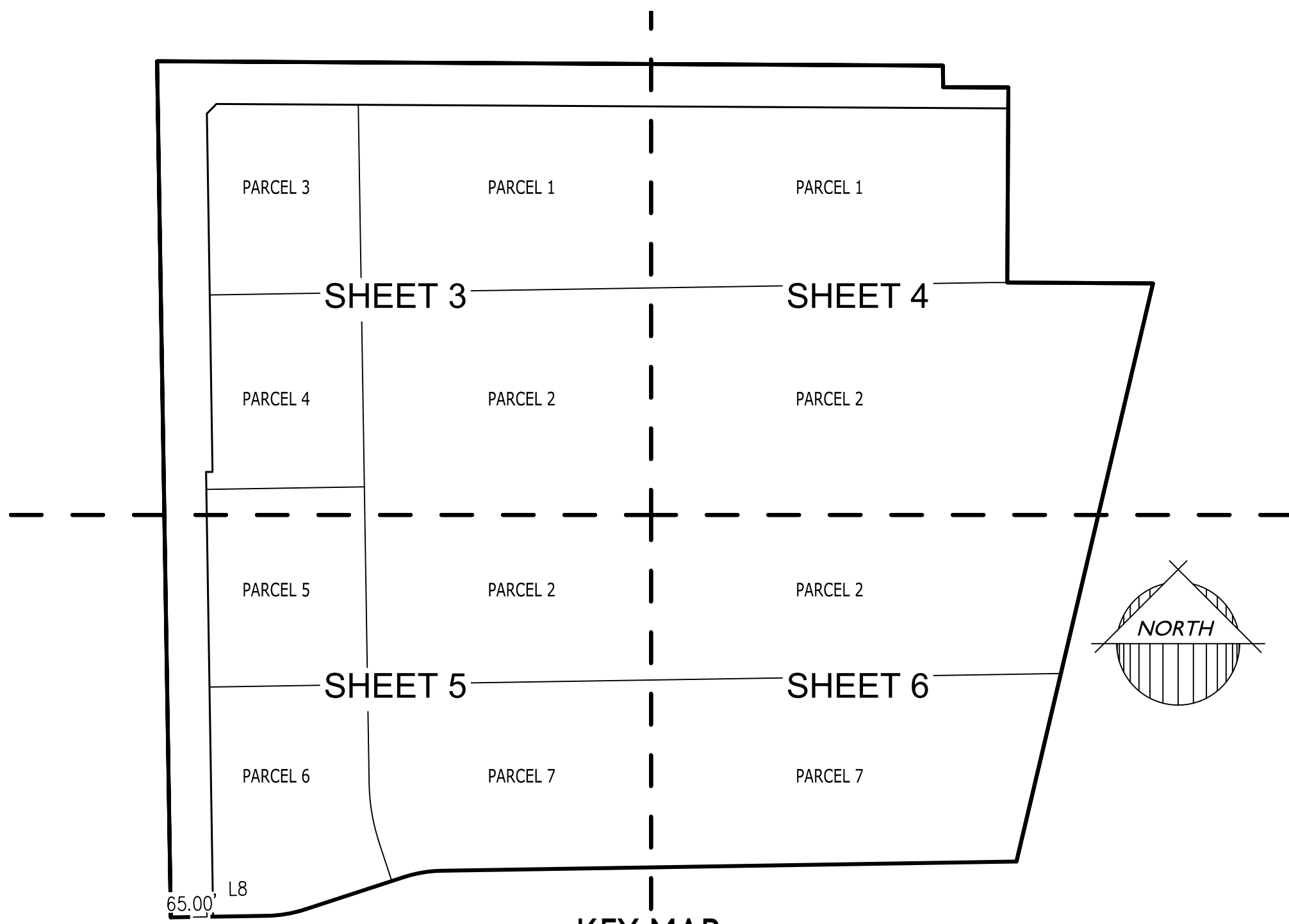
THENCE SOUTH 71 DEGREES 51 MINUTES 34 SECONDS WEST, 158.91 FEET TO THE BEGINNING OF A CURVE, CONCAVE NORTHWEST, HAVING A RADIUS OF 200.00 FEET;

THENCE SOUTH 89 DEGREES 05 MINUTES 06 SECONDS WEST, 147.09 FEET, TO THE WEST LINE OF SAID NORTHWEST QUARTER OF SECTION 19;

LEGEND

■	FND MON. IN HANDHOLE AS NOTED
●	FND MON. NOTED AS NOTED
○	SET 1/2" WITH CAP RLS 45378, UNLESS OTHERWISE NOTED
FND	FOUND
MON.	MONUMENT
BCHH	BRASS CAP IN HAND HOLE
BC	BRASS CAP
MCR	MARICOPA COUNTY RECORDER
G&SRM	GILA AND SALT RIVE MERIDIAN
BK	BOOK
PG	PAGE
R/W	RIGHT OF WAY
CONC	CONCRETE
GLO	GENERAL LAND OFFICE
R/W	RIGHT OF WAY

BOUNDARY LINE
PARCEL LINE
SECTION LINE
SECTION LINE
GLO LOT LINE
RIGHT-OF-WAY
EASEMENT LINE



KEY MAP
NOT TO SCALE

CURVE TABLE					
CURVE	LENGTH	RADIUS	DELTA	CHORD	CHORD BRG
C1	60.13'	200.00'	171°3'32"	59.90'	S80°28'20"W
C2	60.13'	200.00'	171°3'32"	59.90'	N80°28'20"E
C3	19.77'	65.75'	171°3'32"	19.69'	N80°28'20"E
C4	60.13'	200.00'	171°3'32"	59.90'	S80°28'20"W
C5	90.19'	300.00'	171°3'32"	89.85'	S09°31'40"E

LINE TABLE		
LINE	BEARING	LENGTH
L1	S00°37'01"E	33.00'
L2	S89°40'50"E	100.06'
L3	S00°19'10"W	299.40'
L4	S89°40'50"E	223.52'
L5	S71°51'34"W	158.91'
L6	S89°05'06"W	147.09'
L7	N00°54'54"W	22.80'
L8	N89°05'06"E	78.04'
L9	N71°51'34"E	70.14'
L10	N81°19'38"E	54.71'
L11	N71°51'34"E	57.83'
L12	N89°05'06"E	14.50'
L13	N00°54'54"W	7.50'
L14	N00°54'54"W	266.78'
L15	S11°02'27"E	227.52'
L16	S00°54'54"E	42.80'
L17	S44°42'08"W	20.98'
L18	S18°08'26"E	63.84'
L19	S89°05'06"W	10.00'
L20	N89°55'47"W	25.50'

LINE TABLE		
LINE	BEARING	LENGTH
L21	S07°55'27"W	13.79'
L22	S71°51'34"W	20.82'
L23	S18°08'26"E	16.00'
L24	N71°51'34"E	21.24'
L25	S18°08'26"E	58.93'
L26	S00°54'54"E	133.62'
L27	S89°05'06"W	7.50'
L28	S00°54'54"E	16.00'
L29	N89°05'06"E	7.50'
L30	S00°54'54"E	33.17'
L31	N00°48'48"W	11.70'
L32	S89°05'06"W	16.00'
L33	S00°47'25"E	17.70'
L34	S89°05'06"W	227.29'
L35	N89°05'06"E	20.00'
L36	N00°52'29"W	15.00'
L37	S00°38'09"E	5.01'
L38	S89°05'06"W	14.50'
L39	S00°54'54"E	16.00'
L40	N89°05'06"E	14.42'

LINE TABLE		
LINE	BEARING	LENGTH
L41	S89°49'19"E	20.00'
L42	S00°38'01"E	12.91'
L43	S89°16'57"W	11.70'
L44	S00°38'01"E	16.00'
L45	N89°21'59"E	11.70'
L46	S00°54'54"E	5.50'
L47	N89°05'06"E	16.00'
L48	N00°54'54"W	5.50'
L49	S89°05'06"W	35.13'
L50	S00°54'54"E	6.50'
L51	S89°05'06"W	16.00'
L52	N00°54'54"W	6.50'
L53	S89°05'06"W	43.50'
L54	S00°54'54"E	2.00'
L55	N89°05'06"E	15.34'
L56	N00°54'54"W	20.00'
L57	S89°05'06"W	15.34'
L58	S00°54'54"E	10.19'
L59	S89°05'06"W	20.50'
L60	S00°54'54"E	16.00'

LINE TABLE		
LINE	BEARING	LENGTH
L61	N89°05'06"E	20.50'
L62	S89°40'50"E	20.00'
L63	N89°05'06"E	15.50'
L64	N00°54'54"W	20.00'
L65	N89°05'06"E	15.50'
L66	N89°05'06"E	17.17'
L67	S00°54'54"E	12.00'
L68	N89°05'06"E	19.17'
L69	N89°05'06"E	17.50'
L70	N00°54'54"W	20.00'
L71	N00°54'54"W	15.50'
L72	S89°05'06"W	20.00'
L73	S00°54'54"E	58.00'
L74	S89°05'06"E	34.64'
L75	S00°54'54"E	16.00'
L76	N89°05'06"E	34.64'
L77	N00°54'54"W	5.00'
L78	N89°05'06"E	20.00'
L79	S00°54'54"E	43.50'
L80	N89°05'06"E	17.50'

LINE TABLE		
LINE	BEARING	LENGTH
L81	N00°54'54"W	125.24'
L82	N89°05'06"E	16.54'
L83	N00°54'54"W	16.00'
L84	N89°05'06"E	16.54'
L85	S89°05'44"W	16.57'
L86	N00°54'16"W	20.00'
L87	N89°05'44"E	19.78'
L88	N71°51'34"E	1.36'
L89	S89°06'50"W	13.50'
L90	S00°53'10"E	16.00'
L91	N89°06'50"E	13.50'
L92	S89°05'06"W	7.50'
L93	S00°54'54"E	12.00'
L94	S89°05'06"W	7.50'
L95	S00°54'54"E	12.43'
L96	S89°05'06"W	7.50'
L97	S00°54'54"E	16.00'
L98	N89°05'06"E	7.50'
L99	S00°54'54"E	8.17'
L100	N89°05'06"E	8.50'

LINE TABLE		
LINE	BEARING	LENGTH
L101	N00°54'54"W	8.17'
L102	S89°05'06"W	30.32'
L103	N00°54'54"W	14.00'
L104	S89°05'06"W	16.00'
L105	S00°54'54"E	14.00'
L106	N00°54'54"W	8.17'
L107	S89°05'06"W	5.50'
L108	S00°54'54"E	8.17'
L109	N00°54'54"W	14.00'
L110	S89°05'06"W	16.02'
L111	N00°54'54"W	14.00'
L112	N00°54'54"W	6.00'
L113	S00°54'54"E	20.50'
L114	S89°05'06"W	5.50'
L115	S00°54'54"E	16.00'
L116	N89°05'06"E	5.50'
L117	N88°54'51"E	11.52'
L118	N01°05'09"W	16.00'
L119	S88°53'04"W	11.48'
L120	N89°05'06"E	5.50'

LINE TABLE		
LINE	BEARING	LENGTH
L121	N00°54'54"W	16.00'
L122	S89°05'06"W	5.50'
L123	N00°54'54"W	11.17'
L124	S00°54'54"E	7.50'
L125	N89°05'06"E	8.02'
L126	S01°05'09"E	3.93'
L127	N88°54'51"E	16.00'
L128	N01°05'09"W	11.28'
L129	S00°54'54"E	11.19'
L130	N89°05'06"E	16.00'
L131	N00°54'54"W	11.18'
L132	S00°54'54"E	7.50'
L133	N89°05'06"E	16.00'
L134	S44°05'06"W	42.43'
L135	S44°05'06"W	54.14'
L136	S89°05'24"W	1.42'
L137	S00°16'37"E	110.51'
L138	S89°51'29"W	86.82'
L139	S00°08'31"E	21.33'
L140	S89°47'45"E	52.75'

LINE TABLE		
LINE	BEARING	LENGTH
L141	S00°03'57"W	143.08'
L142	S89°59'41"W	69.75'
L143	N00°03'51"E	109.19'
L144	N89°05'06"E	517.36'
L145	S00°01'45"E	120.36'
L146	S55°14'33"E	17.79'
L147	N89°31'04"E	7.22'
L148	N46°11'10"E	42.38'
L149	N89°20'10"E	52.02'
L150	S00°55'36"E	85.60'
L151	S89°14'25"W	104.75'
L152	S89°51'47"W	57.15'
L153	N00°37'34"W	110.37'
L154	N89°45'49"E	56.59'
L155	N00°54'54"E	195.50'
L156	N00°54'54"W	165.45'
L157	S89°40'50"E	97.61'
L158	N89°41'38"W	124.49'

PARCEL #	AREA (SF)	AREA (AC)
1	67,519	1.5500
2	69,614	1.5981
3	73,589	1.6894
4	84,767	1.9460
5	294,490	6.7606
6	685,286	15.7320
7	168,465	3.8674





POINT OF BEGINNING
NW COR
SEC 19, T1S, R7E, G&SRM
FOUND 3" MARICOPA COUNTY
HIGHWAY DEPARTMENT BCHH

