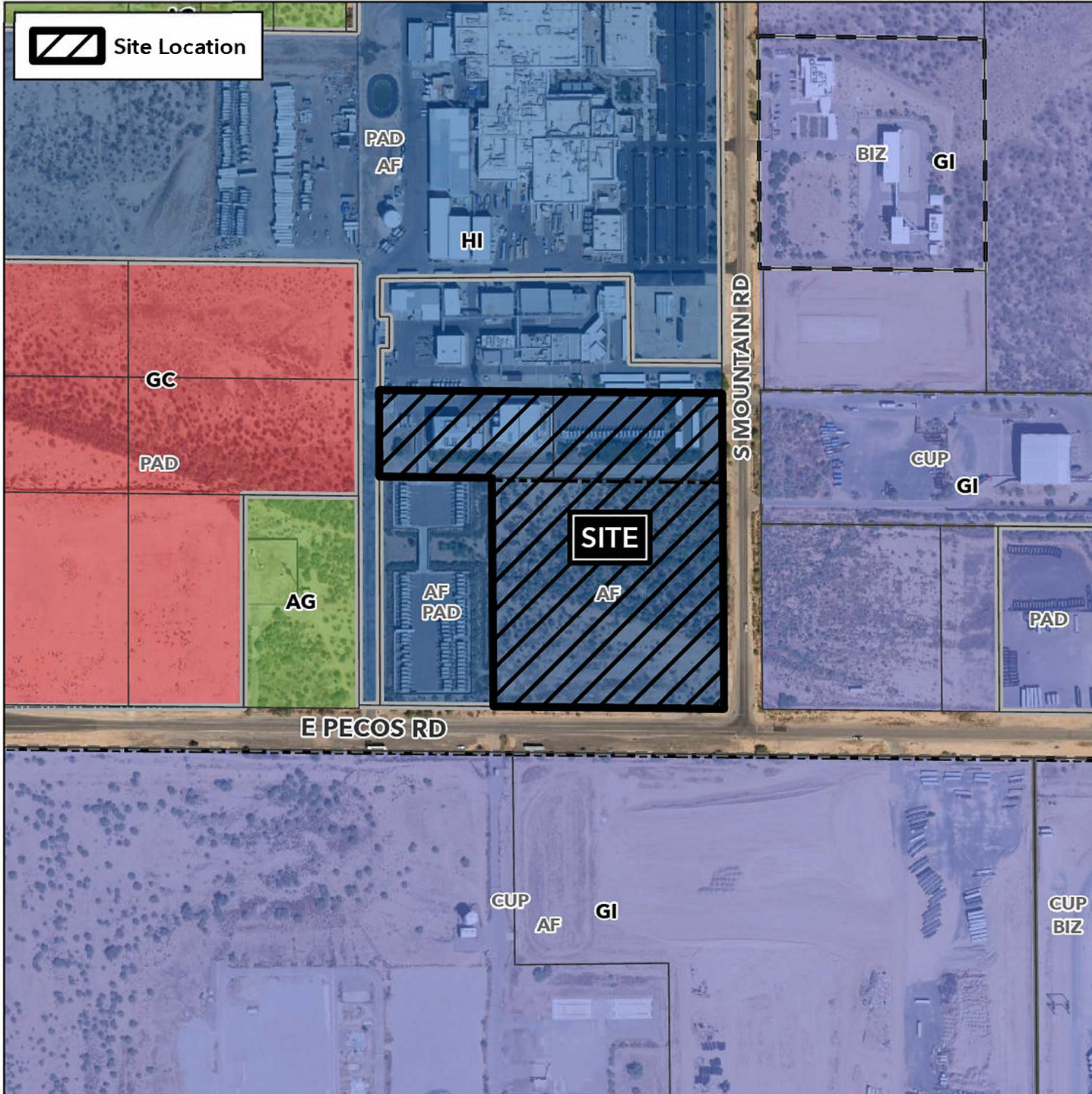


Planning and Zoning Vicinity Map: ZON24-00656

Case Details

 Site Location



Case:

ZON24-00656

Site / Address:

(District 6), 16± acres located at the northwest corner of East Pecos Road and South Mountain Road.

Request:

Major Site Plan Modification and amending condition of approval No. 1 for Case No. Z15-024 to allow for an expansion to an existing manufacturing plant.

