



Liquor License Map

City of Mesa Tax & Licensing

Requesting Approval:



KPOT KOREAN BBQ & HOT POT
1940 W RIO SALADO PKWY 103-107

License Type:

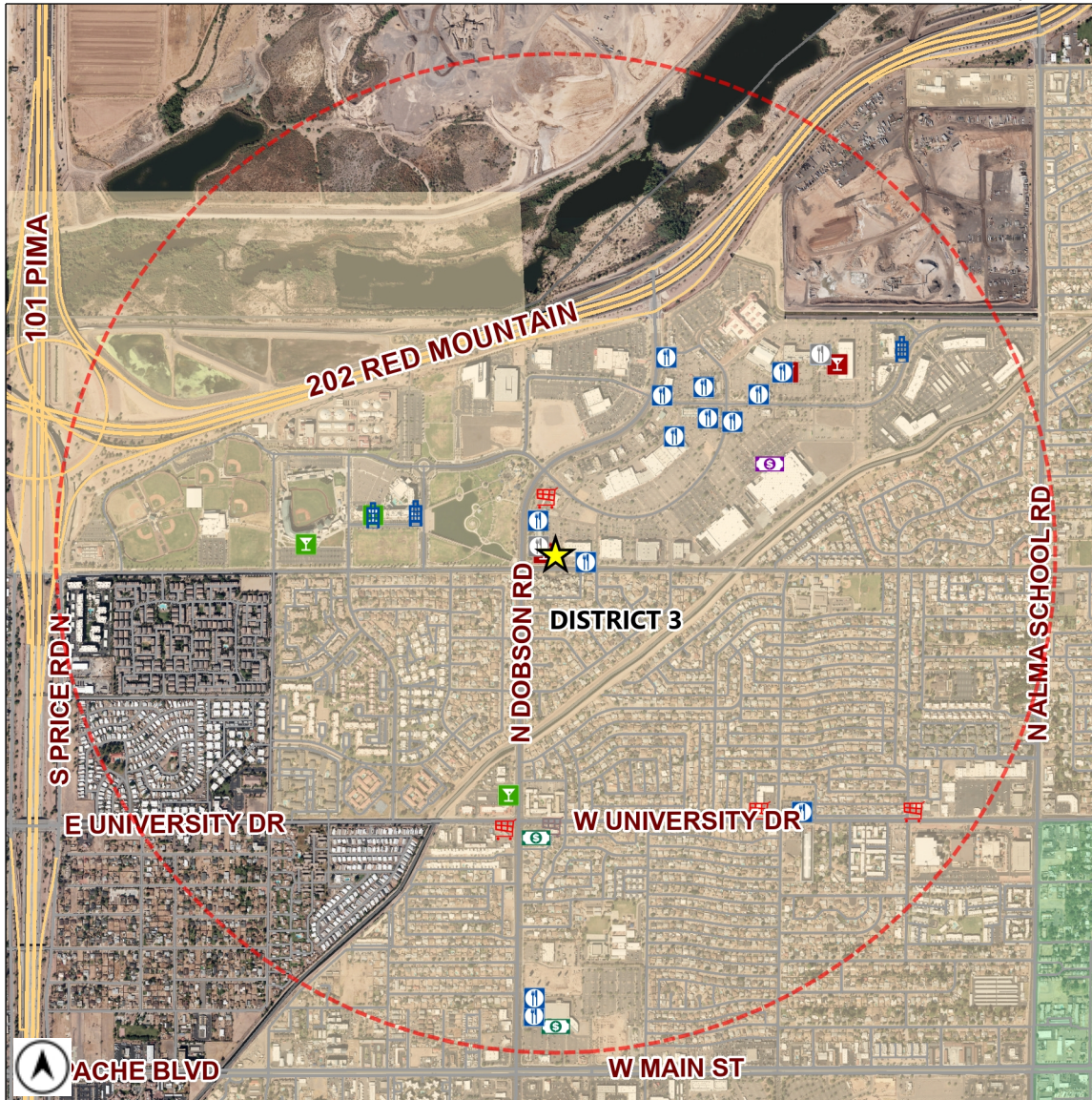
RESTAURANT (PEND)

License Number:

LICA24-15070

Estimated Population (1 Mile): **13977**

Source: MAG ACS 2013-2017 5 year data



	BAR	3		CLUB	0		HOTEL-MOTEL	3		MICRO-BREWERY	0
	BAR (PEND)	0		CLUB (PEND)	0		HOTEL-MOTEL (PEND)	0		MICRO-BREWERY (PEND)	0
	BEER / WINE BAR	3		CONVEYANCE	0		IN-STATE PRODUCER	0		RESTAURANT	14
	BEER / WINE BAR (PEND)	0		CONVEYANCE (PEND)	0		IN-STATE PRODUCER (PEND)	0		RESTAURANT (PEND)	2
	BEER / WINE STORE	5		DOMESTIC FARM WINERY	0		LIQUOR STORE	2		WHOLESALE	0
	BEER / WINE STORE (PEND)	1		DOMESTIC FARM WINERY (PEND)	0		LIQUOR STORE (PEND)	0		WHOLESALE (PEND)	0
	BEER / WINE STORE / SAMPLING	0		GOVERNMENT	0		LIQUOR STORE / SAMPLING	1		1 MILE BUFFER	
	BEER / WINE STORE / SAMPLING (PEND)	0		GOVERNMENT (PEND)	0		LIQUOR STORE / SAMPLING (PEND)	0			

Total Count: 34 liquor licenses