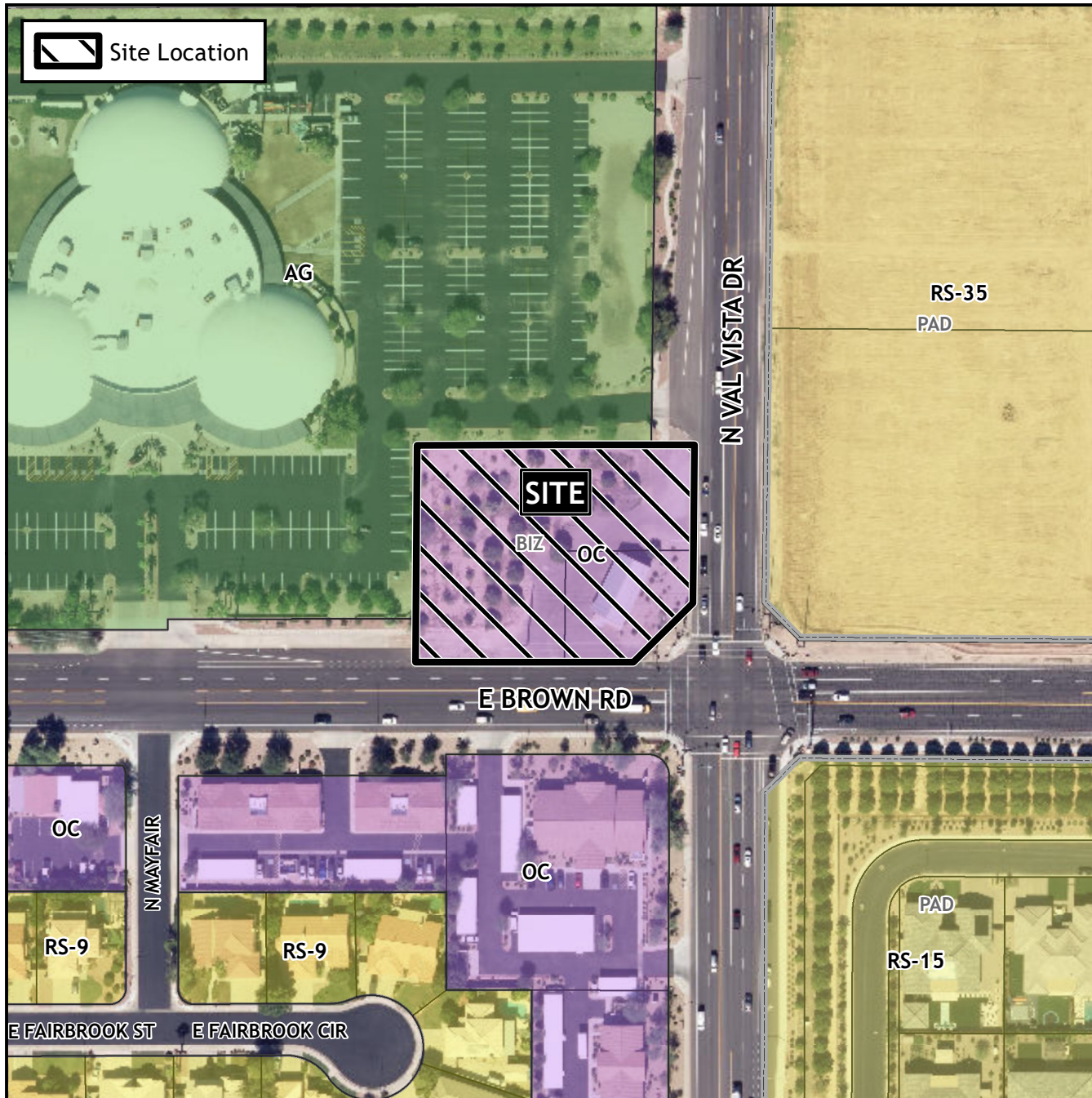


# Planning and Zoning Vicinity Map: ZON23-00222

## Case Details



### CASE:

ZON23-00222

### SITE / ADDRESS:

(District 1). Within the 1200 block of North Val Vista Drive (west side) and within the 3500 block of East Brown Road (north side). Located west of Val Vista Drive and north of Brown Road. (1.2± acres).

### REQUEST:

Rezone from Office Commercial with a Bonus Intensity Zone overlay (OC-BIZ) to Office Commercial (OC) and Major Site Plan Modification. This request will allow for the development of a day care center.

