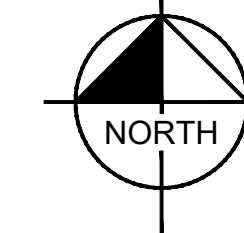


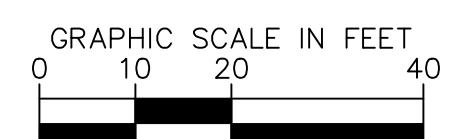
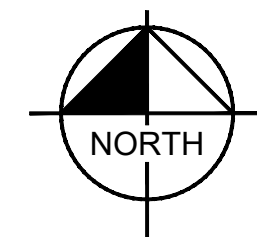
VICINITY MAP  
NOT TO SCALE



LEGEND

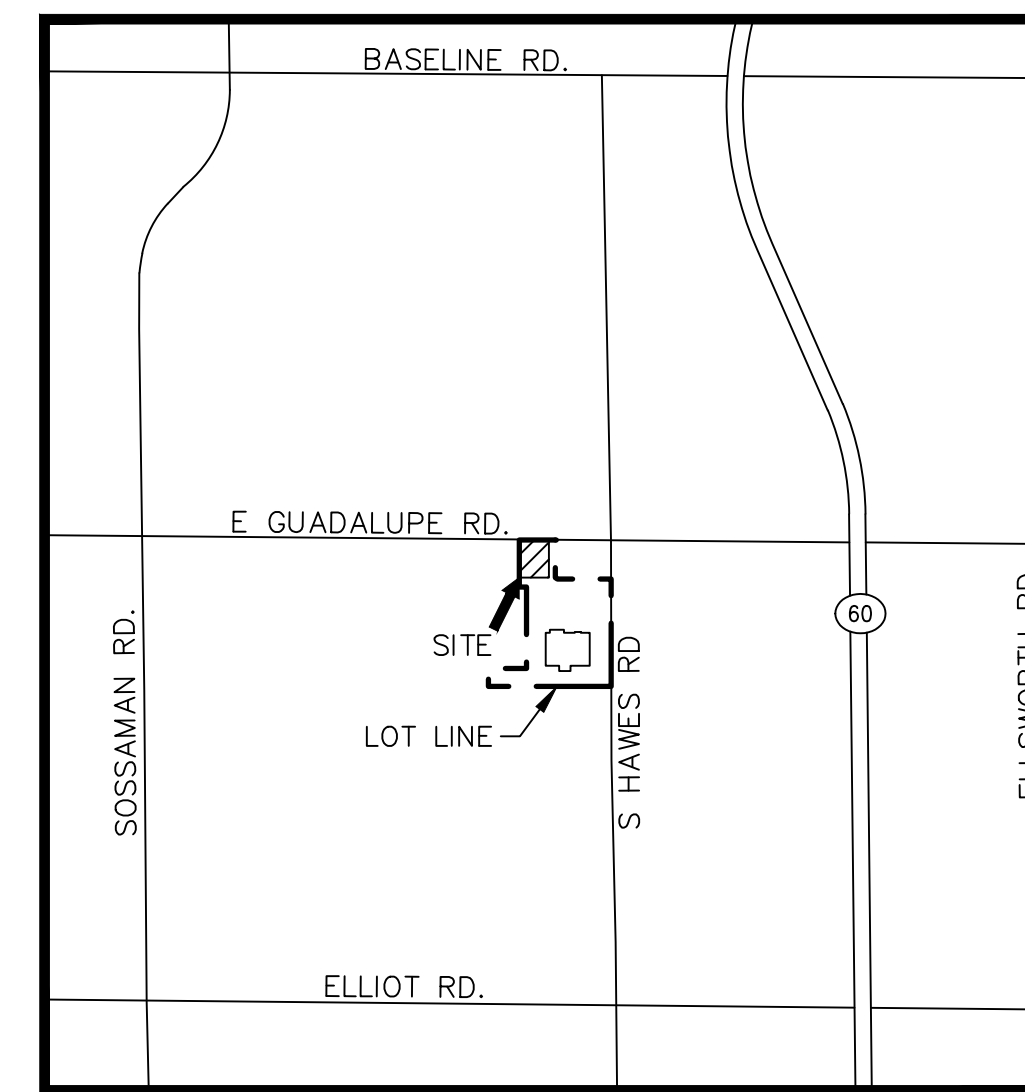
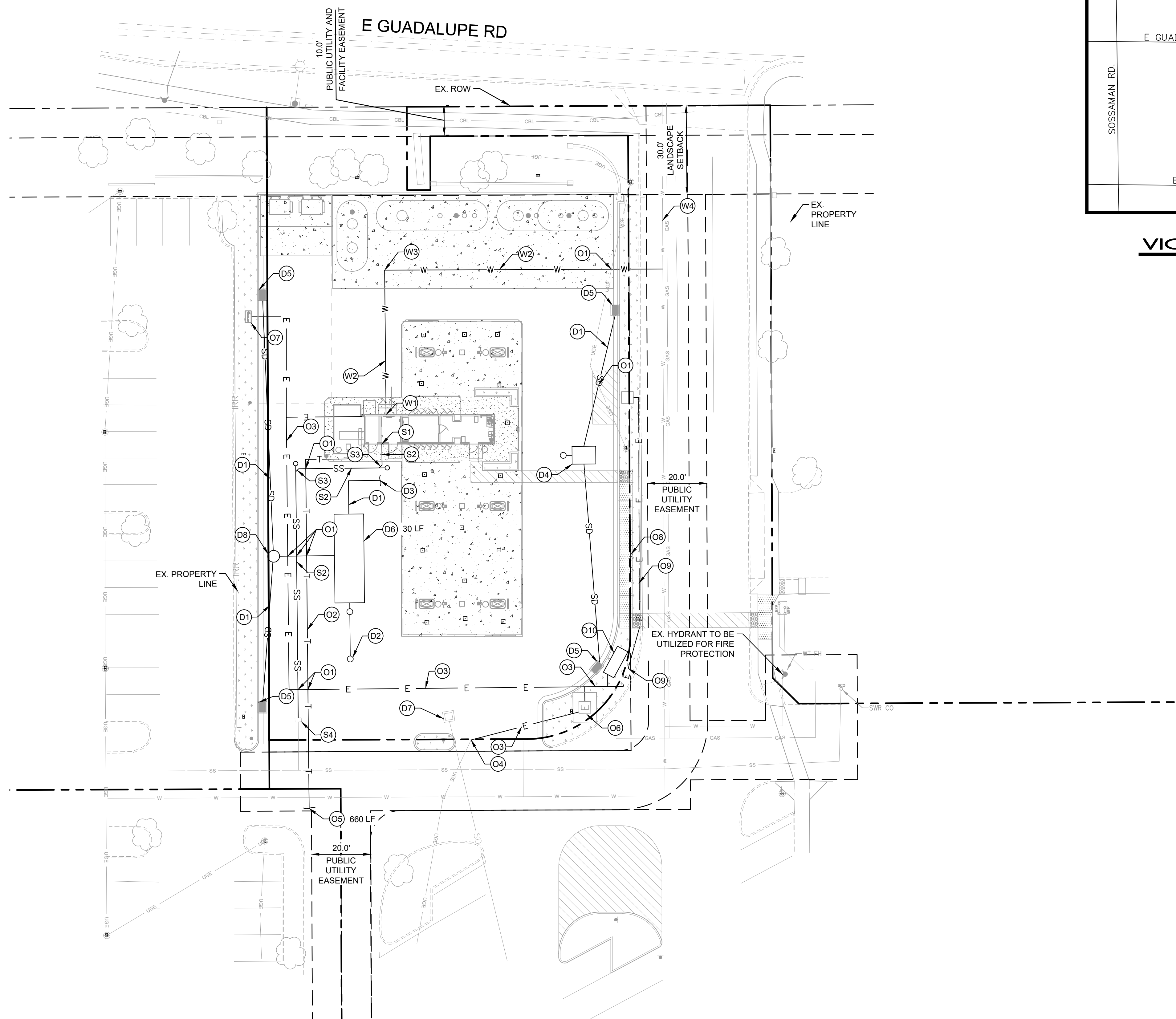
	PROPERTY LINE
	EASEMENT LINE
	PROPOSED CONTOUR
	EXISTING CONTOUR
	RIDGE LINE
	GRADING LIMITS
	PROPOSED STORM DRAIN LINE
	EXISTING STORM DRAIN LINE
	FINISH FLOOR ELEVATION
	FLOWLINE
	LIP OF GUTTER
	TOP OF CURB
	FINISH SURFACE
	EXISTING GRADE
	PROPOSED GRADE
	HEAVY DUTY ASPHALT PAVEMENT
	LANDSCAPING
	CONCRETE PAVEMENT
	MANUFACTURER: SCOFIELD FINISH: MEDIUM BROOM COLOR: 3172 MOONLIGHT GRAY
	STANDARD DUTY CONCRETE SIDEWALK
	TRUNCATED DOMES
	PROPOSED SLOPE
	PROPOSED DRAIN INLET

WALMART FUEL STATION - STORE #5349  
8327 E GUADALUPE RD, MESA, AZ 85212  
FINAL PRELIMINARY GRADING PLAN



**Kimley»Horn**

© 2024 KIMLEY-HORN AND ASSOCIATES, INC.  
1100 W TOWN AND COUNTRY RD, SUITE 700, ORANGE, CA 92868  
PHONE: 714-939-1030 FAX: 714-938-9488



## LEGEND

	PROPERTY LINE
	EASEMENT LINE
	EXISTING UNDERGROUND COMMUNICATION LINE
	EXISTING UNDERGROUND GAS LINE
	EXISTING UNDERGROUND ELECTRICAL LINE
	EXISTING UNDERGROUND SEWER LINE
	EXISTING UNDERGROUND WATER LINE
	EXISTING IRRIGATION LINE
	PROPOSED TELECOMMUNICATION LINE
	PROPOSED WATER LINE
	PROPOSED SEWER LINE
	PROPOSED UNDERGROUND ELECTRICAL LINE
	PROPOSED STORM DRAIN LINE
	EXISTING STORM DRAIN LINE
	M.A.G.
	MARICOPA ASSOCIATION OF GOVERNMENTS
	PROPOSED DRAIN INLET

## SEWER

- (S1) BUILDING POINT OF CONNECTION (5-FT FOM BUILDING FACE). REFER TO MEP PLANS FOR CONTINUATION.
- (S2) INSTALL 4" SDR-35 PVC SEWER LATERAL.
- (S3) INSTALL 4" SDR-35 PVC 45 DEGREE BEND WITH DEAD END SANITARY SEWER CLEANOUT.
- (S4) POINT OF CONNECTION FOR SANITARY SEWER LINE.

## DOMESTIC WATER

- (W1) 1.5" BUILDING POINT OF CONNECTION (5-FT FROM BUILDING FACE). REFER TO PLUMBING PLANS FOR CONTINUATION.
- (W2) INSTALL 1.5" SCHEDULE 40 DOMESTIC WATER PIPE.
- (W3) INSTALL 1.5" PVC SCHEDULE 40 90 DEGREE BEND.
- (W4) POINT OF CONNECTION FOR WATER LINE.

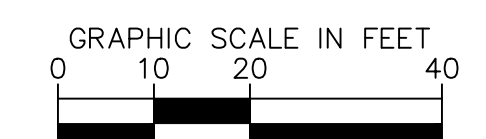
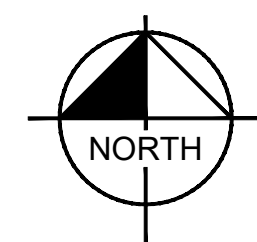
## OTHER UTILITY NOTES

- (O1) PROPOSED UTILITY CROSSING. MAINTAIN MINIMUM 12" VERTICAL SEPARATION.
- (O2) PROPOSED TELECOMMUNICATION CONDUIT 3" DIRECTIONAL BORE OR APPROVED EQUAL.
- (O3) CONDUIT FOR 400 AMP ELECTRIC SERVICE. REFER TO UTILITY COMPANY PLAN/REQUIREMENTS FOR MORE INFORMATION.
- (O4) PROPOSED ELECTRIC CONDUIT TIE INTO EXISTING SERVICE.
- (O5) PROPOSED TELECOMMUNICATION TIE INTO EXISTING SERVICE.
- (O6) PROPOSED TRANSFORMER.
- (O7) PROPOSED VAPOR RECOVERY UTILITY.
- (O8) PROPOSED AIR/WATER PEDESTAL.
- (O9) PROPOSED 1" CONDUIT TO AIR/WATER PEDESTAL.
- (O10) PROPOSED STANDARD ELECTRICAL SYSTEM.

## STORM DRAIN

- (D1) PROPOSED STORM DRAIN PIPE.
- (D2) INSTALL MAXWELL PLUS DUAL CHAMBER DRYWELL.
- (D3) PROPOSED CONNECTION TO CANOPY DRAINAGE.
- (D4) PROPOSED ENVIBRO 20 FILTRATION SYSTEM.
- (D5) PROPOSED TYPE A CATCH BASIN PER M.A.G. STANDARD DETAIL 530.
- (D6) PROPOSED 120" CMP GAUGE 14 TRENCHCOAT FILM UNDERGROUND RETENTION TANK, LENGTH PER PLAN.
- (D7) REPLACE EXISTING STORM DRAIN INLET COVER WITH SOLID COVER.
- (D8) PROPOSED STORM DRAIN MANHOLE.

**WALMART FUEL STATION - STORE #5349**  
**8327 E GUADALUPE RD, MESA, AZ 85212**  
**FINAL PRELIMINARY UTILITY PLAN**



**Kimley»Horn**

© 2024 KIMLEY-HORN AND ASSOCIATES, INC.  
 1100 W TOWN AND COUNTRY RD, SUITE 700, ORANGE, CA 92868  
 PHONE: 714-939-1030 FAX: 714-938-9488