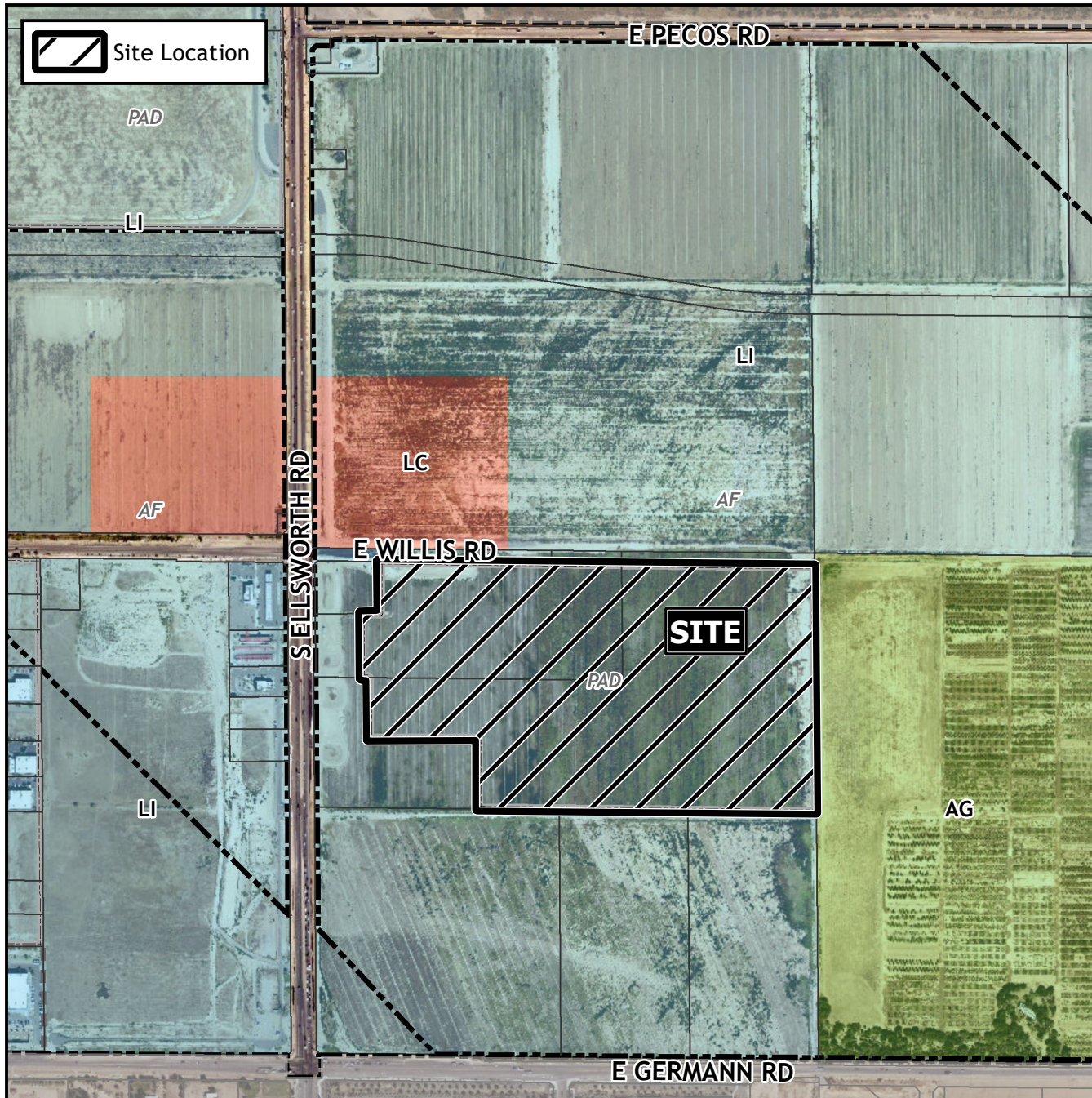


Final Plat Vicinity Map



Case Details

Project:

Willis Industrial Park
SUB22-00444

Site/Address:

District 6. Within the 9300 to 9500 blocks of East Willis Road (south side). Located north of Germann Road on the east side of Ellsworth Road. (64.5± acres).

Description:

Mutual Development Partners, Developer; Geoffrey K. Brimhall, Surveyor.

