

Safe Streets For All (SS4A): Comprehensive Safety Action Plan

Sustainability and Transportation Committee

Erik Guderian, Assistant Transportation Director
Sabine King, Supervising Engineer

May 2, 2024



AGENDA

- Project Overview
- Work Accomplished To Date
- Public Engagement
- Next Steps
- Q&A

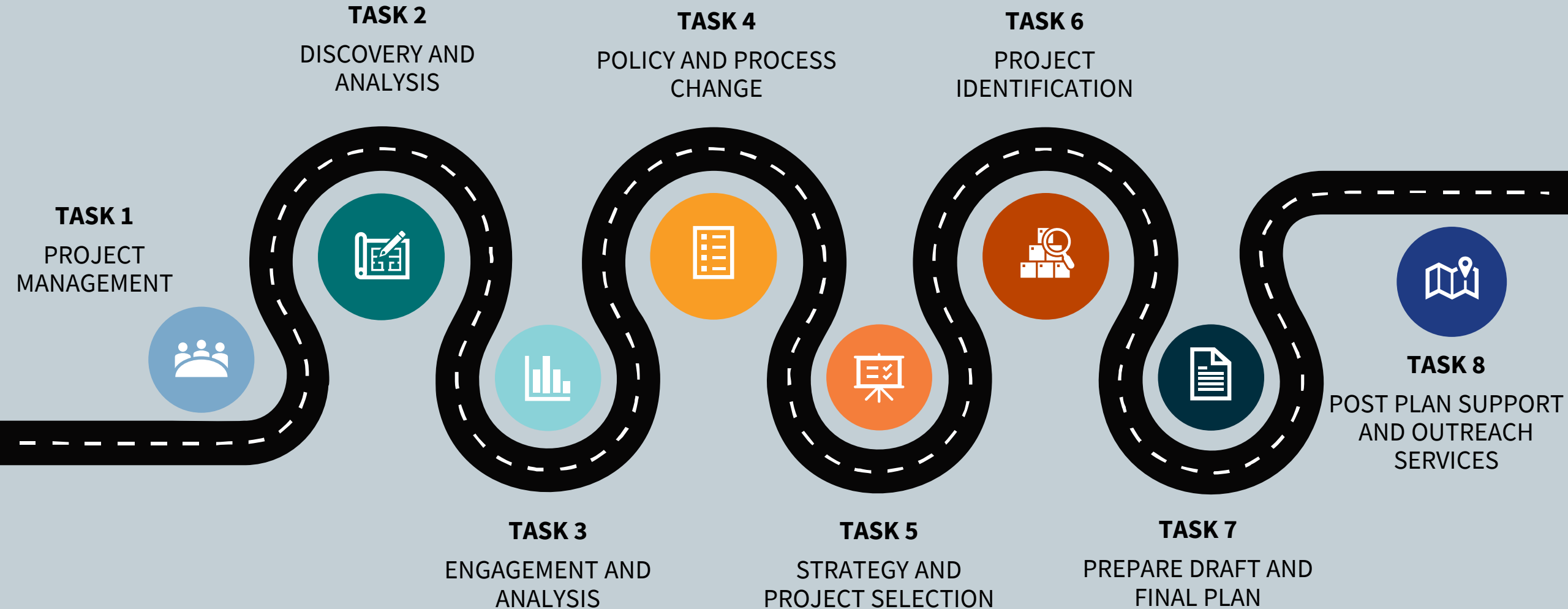
01 Project Overview

Comprehensive Safety Action Plan Goals

1. 30% Reduction in motor vehicle crash fatalities and serious injuries by 2030
2. Develop a Culture of Safety through collaboration, sharing responsibility for safety in the transportation system
3. Achieve SS4A Planning Grant certification and position Mesa for future SS4A Implementation Grants



Scope of Work

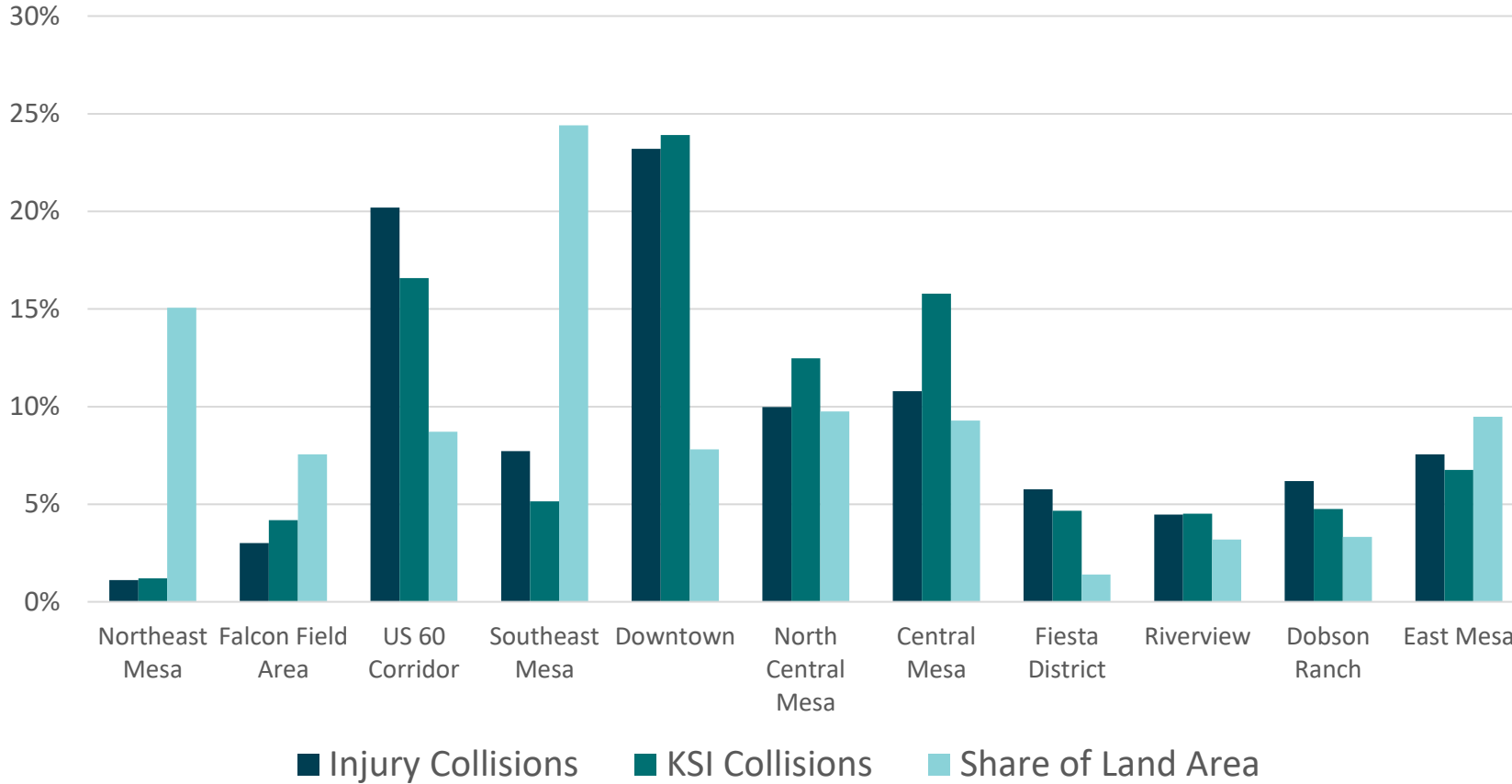


02 Work Accomplished To Date



Systemic Analysis

Contextual Factor: Travel Shed



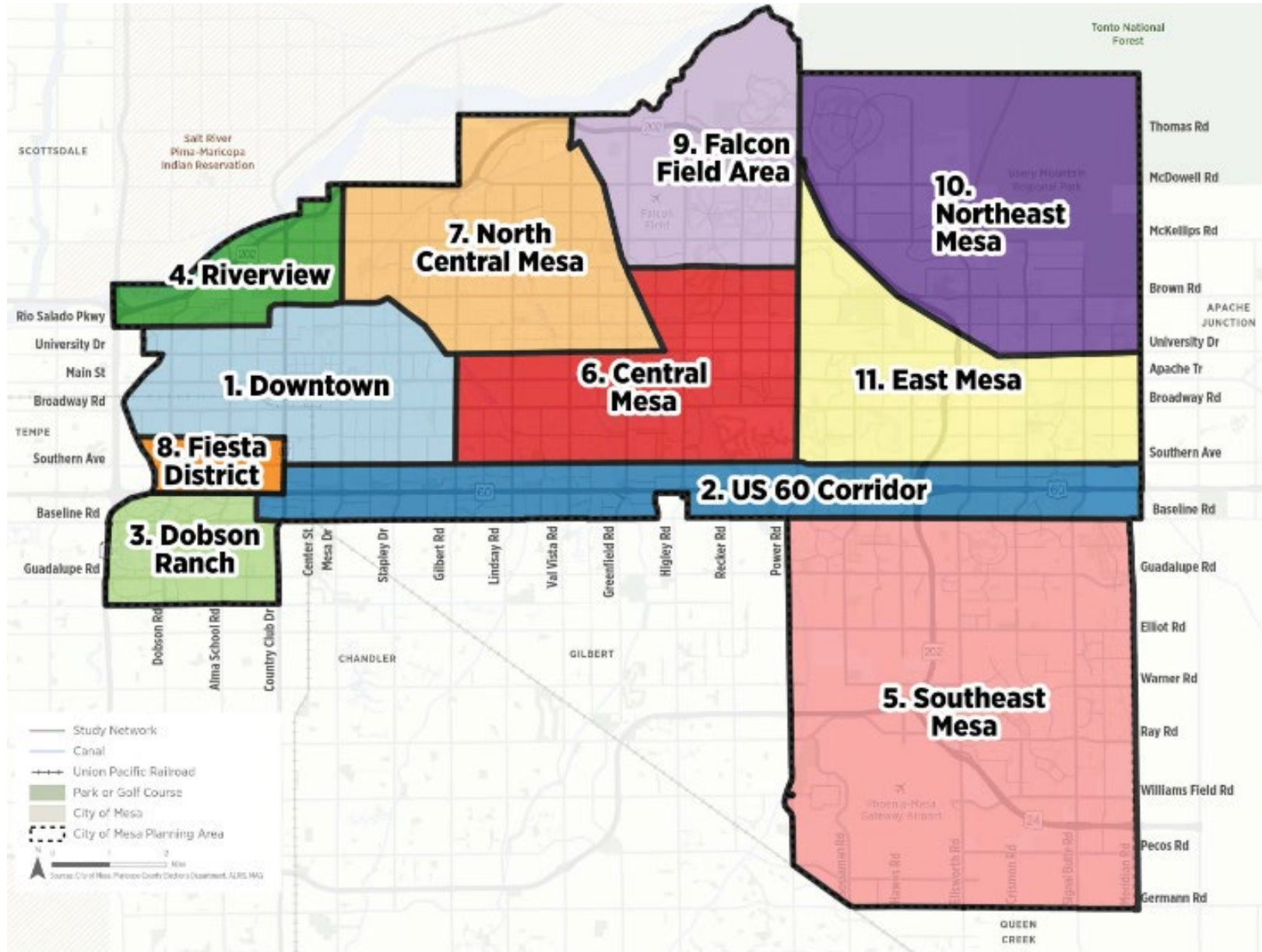
➤ 24% of KSI* collisions occur in the **Downtown travel shed**, which accounts for 8% of the City's land area

➤ 5% of KSI* collisions occur in the **SE Mesa travel shed**, which accounts for 24% of the City's land area

* Killed or Seriously Injured



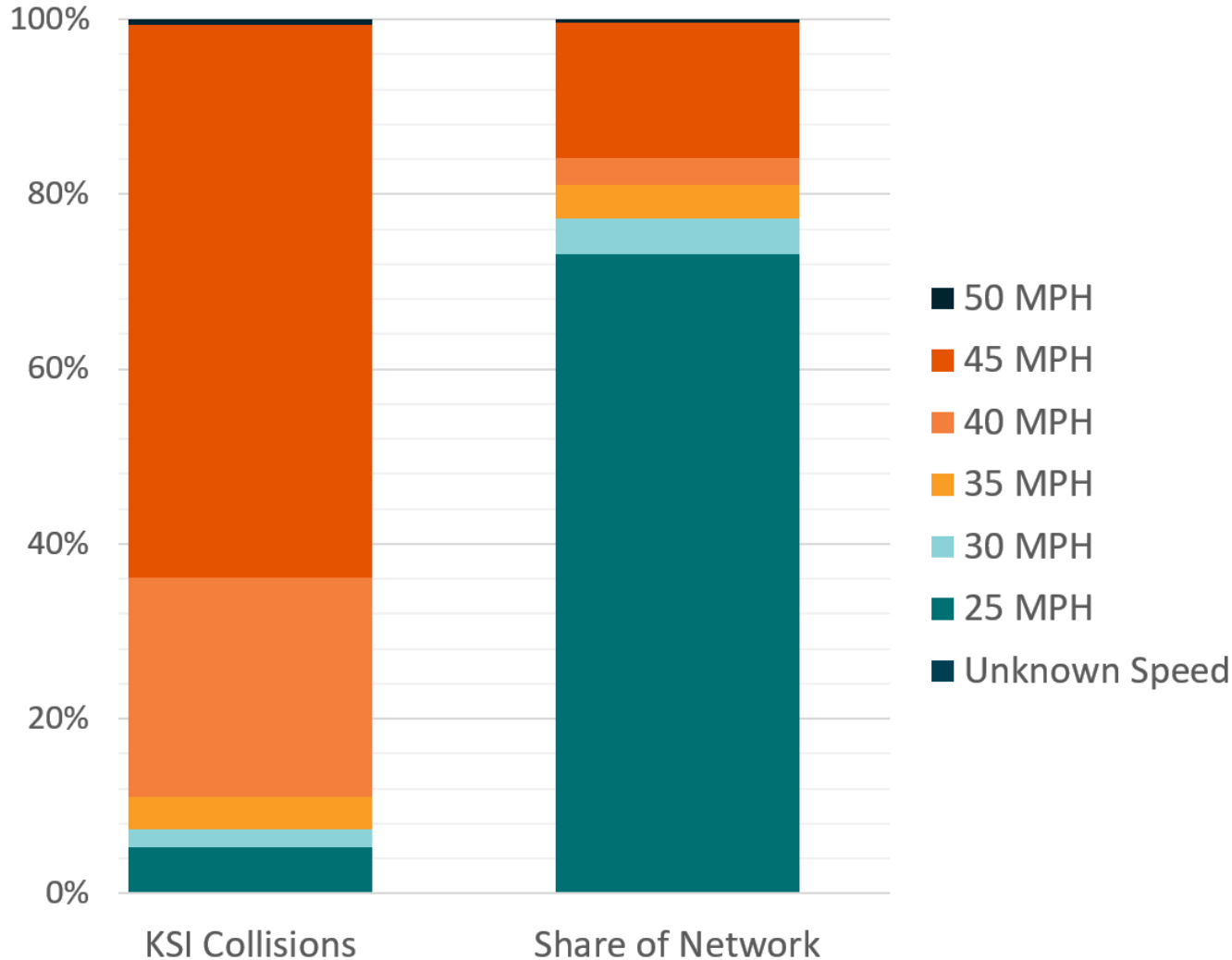
Travel Sheds





Systemic Analysis

Roadway Factor: Speed

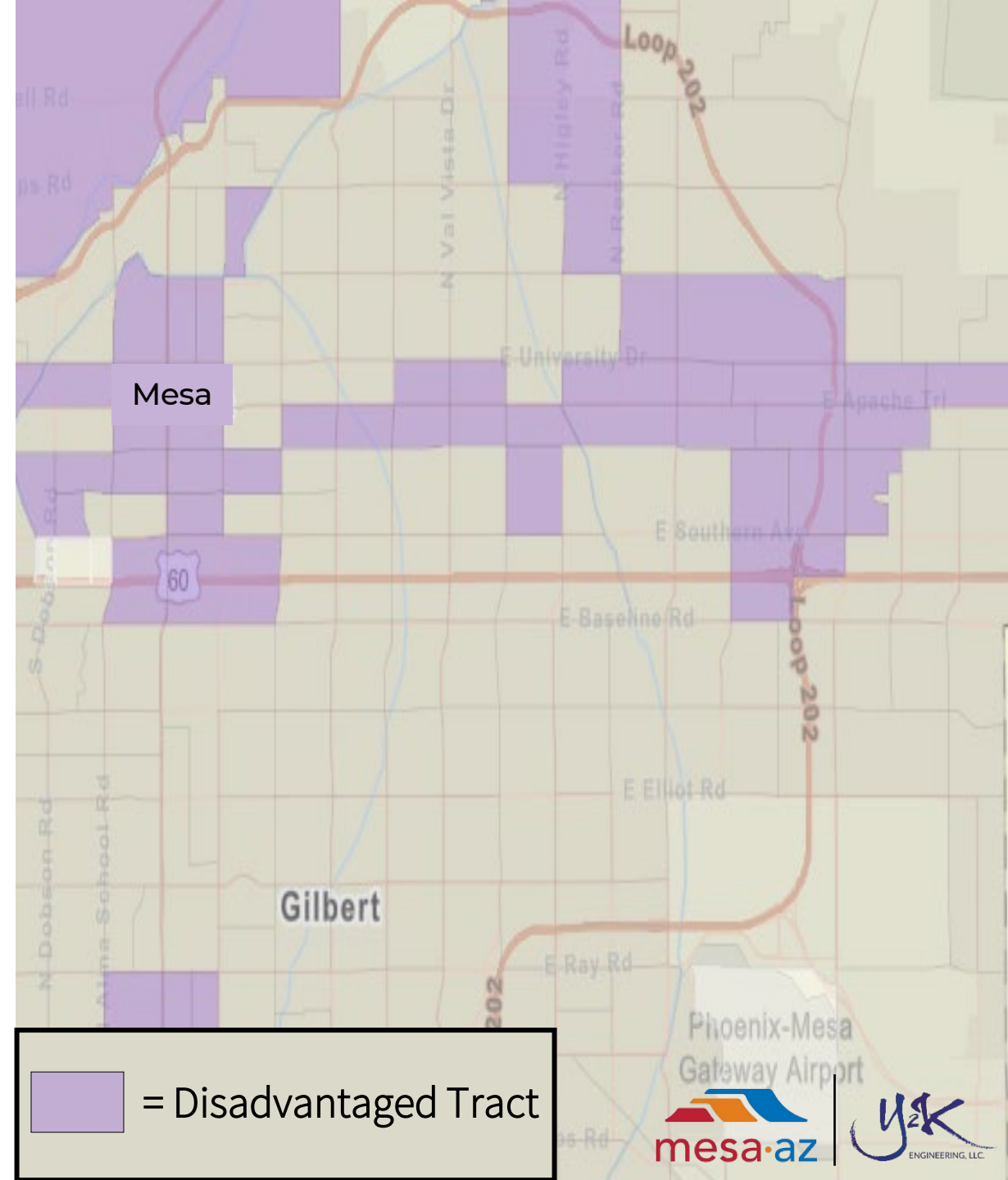


- 89% of KSI collisions on streets with 40+ mph posted speed
- These streets account for 19% of the network



Equity Analysis

- Half of KSI collisions occur within federally defined Disadvantaged Communities
- These communities account for **15% of Mesa's land area**
- Equity will be a factor throughout project tasks
 - Public Engagement
 - Project Prioritization





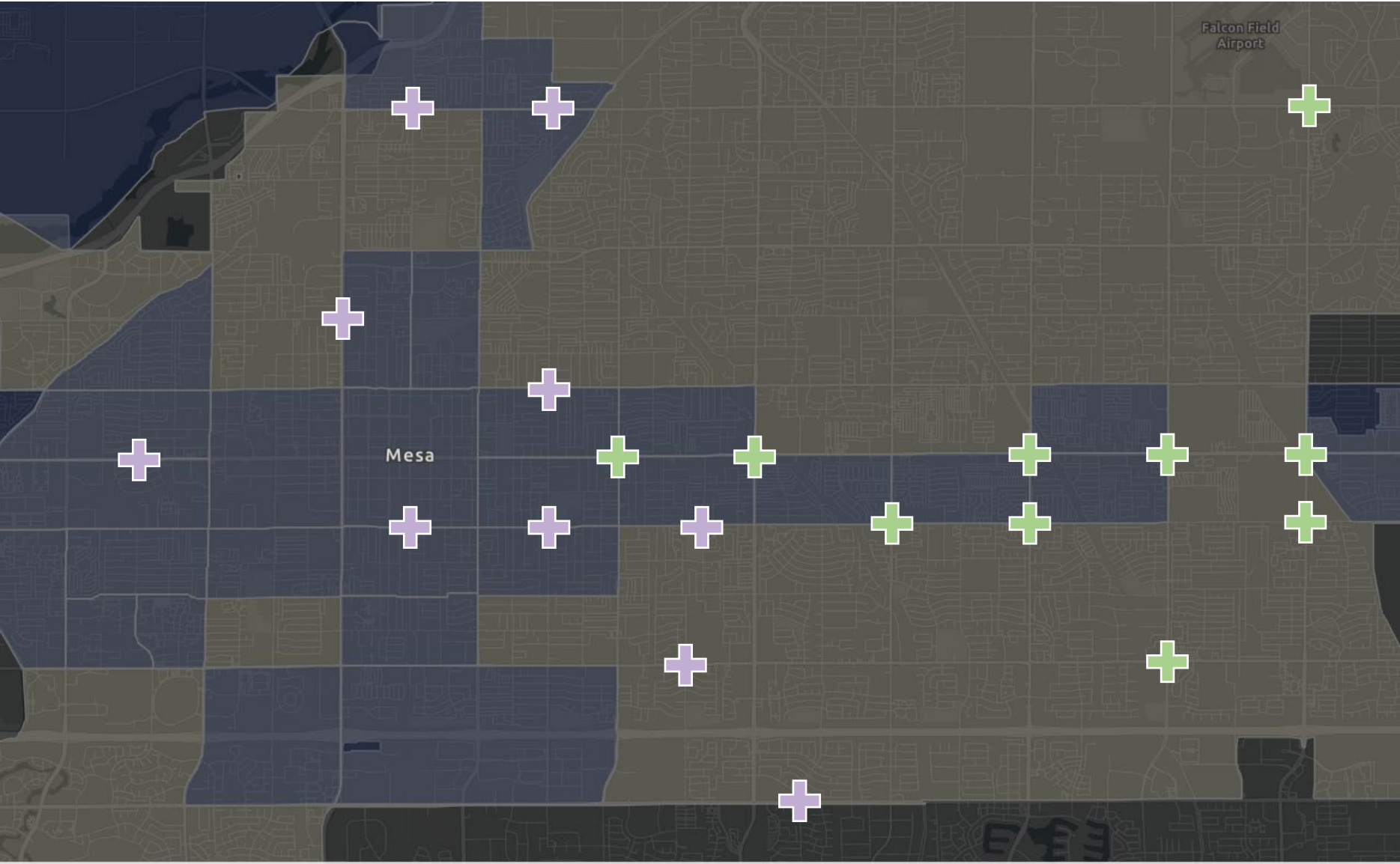
Collision Profiles



- Profile 1: Failed to Yield violations on streets with 40+ MPH posted speed
- Profile 2: Vehicle-only collisions involving drivers age 65+
- Profile 3: Collisions involving alcohol or drugs
- Profile 4: Motorcycle and vehicle-only collisions involving left turns at signals without fully protected lefts
- Profile 5: Bike angle collisions at intersections (signalized and unsignalized)
- Profile 6: Motorcycle collisions at unsignalized intersections on arterials
- Profile 7: Pedestrian collisions at signals on 6+ lane streets
- Profile 8: Pedestrian collisions between 6 PM and midnight in commercial areas
- Profile 9: Head on collisions
- Profile 10: Motorcycle single vehicle collisions
- Profile 11: Bike collisions involving people 17 and under in residential areas



Predictive Safety Analysis

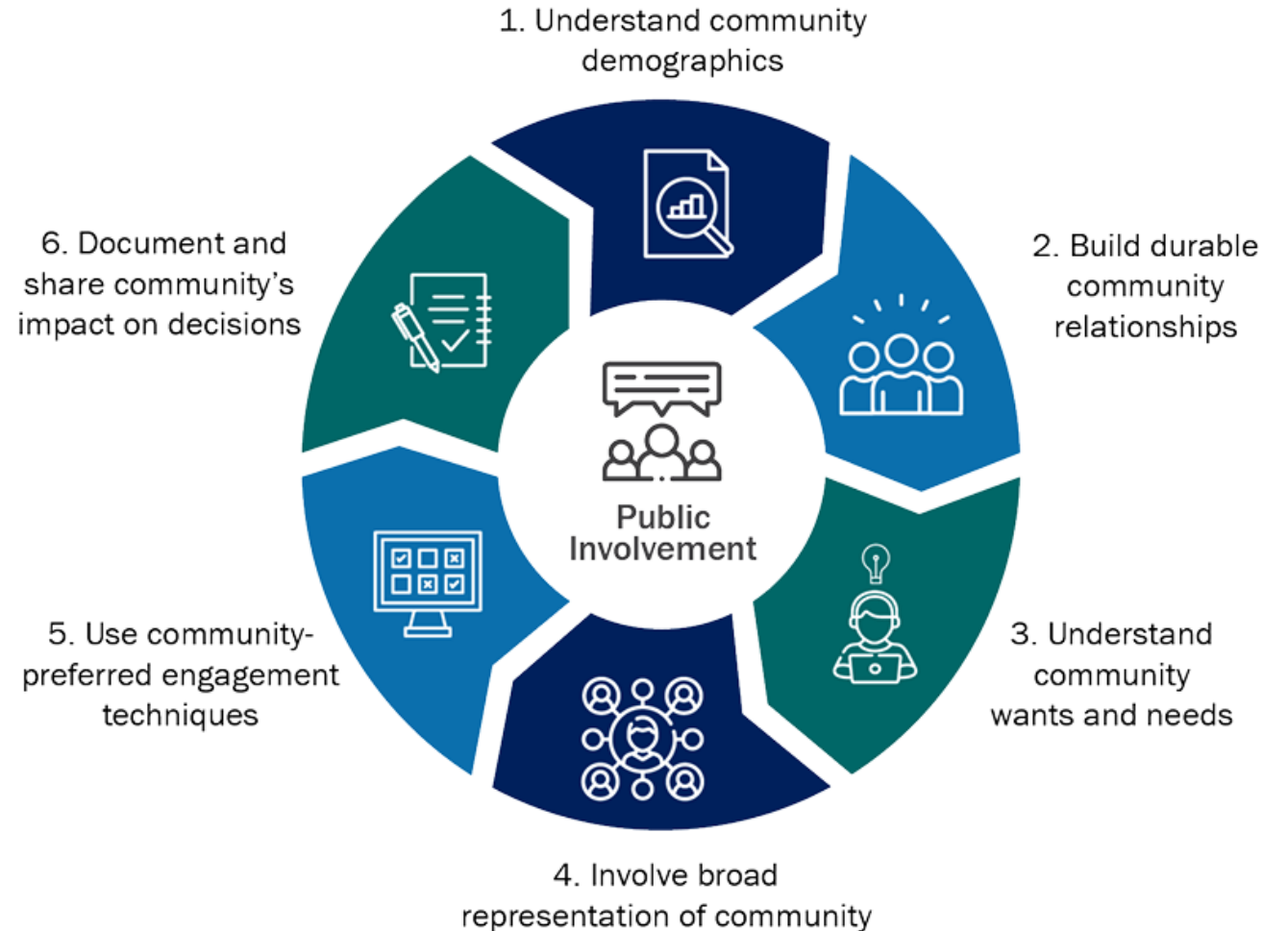


- **GREEN**
Highest Ranked
Arterial – Arterial
Intersections
- **PURPLE**
Highest Ranked
Collector – Arterial
Intersections

03 Public Engagement



Approach





Events & Activities

Phase One: April – May

- Public Meetings (Bond Election):
April 3rd – April 17th
- CycloMesa – April 6th
- Celebrate Mesa – April 13th
- Bike to Work Day – April 19th
- Social Media Video – Early May



Phase Two: Fall 2024

- Presentations: TAB & Council
- Draft strategies available For public feedback
- Safety Pledge

Phase Three: Post Plan Adoption

- Website management
- Quarterly engagement summaries



Online Survey



City of Mesa Road Safety Plan

Moving Mesa Towards Safer Streets

Open

City of Mesa Comprehensive Safety Action Plan

Please take this short survey to help the study team understand transportation and mobility safety concerns that are important to you.

Enter to win \$100 gift card! Fill out this survey and include your email address.

Please note this survey will close on May 31, 2024.



What is a Comprehensive Safety Action Plan?

The Comprehensive Safety Action Plan (CSAP) will serve as a roadmap for *Moving Mesa Towards Safer Streets*, including identifying road safety strategies and projects, and fostering a community-wide culture of safety. The CSAP is assessing the main risk factors of deadly and serious crashes, using feedback from the public and detailed data analysis. This will enhance the city's efforts to prevent motor vehicle crashes through safety planning and education, redesigned streets and updates to policies and operations.

1. Thinking of your experience traveling in Mesa, do you agree that Mesa streets are safe?

- Strongly Agree
- Agree
- Neutral
- Disagree
- Strongly Disagree

2. Which areas are of greatest safety concern to you? Rank the following strategies in order from most concerning to least concerning by dragging the options from the left list to the right block.

Intersections

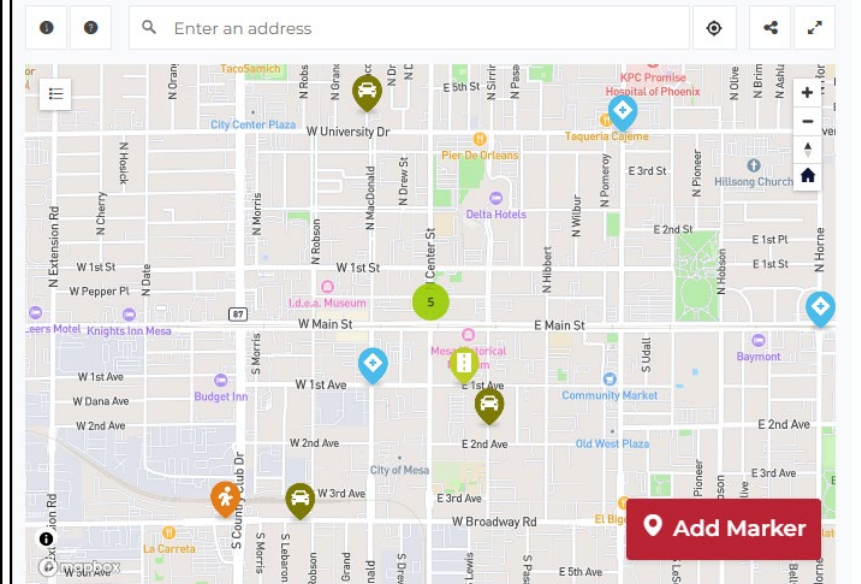
Map Safety Issues in Mesa

For additional information on how to use the interactive map, please click on the info or help icons which are located to the left of the address search bar."

Click the red "Add Marker" box and use your mouse to drop a marker on the map to share where you have safety concerns in Mesa. Then, select the topic of your comment from the drop down menu. You can also add a comment in the field that appears beneath the drop down menu.

For additional information on how to use the interactive map, please click on the instructions icon located to the left of the address search bar.

138 contributions so far



www.mesasafeststreets.com



04 Next Steps

NEXT STEPS



We are here

IDENTIFY FOCUS
AREAS AND
STRATEGIES



DEVELOP AND
PRIORITIZE
PROJECTS

Summer/Fall '24



PUBLIC
ENGAGEMENT
PHASE 2

Fall '24



POST PLAN
SUPPORT AND
OUTREACH

2025



PREPARE DRAFT
AND FINAL PLAN

Winter '24/'25



SS4A GRANT
2025



Questions?