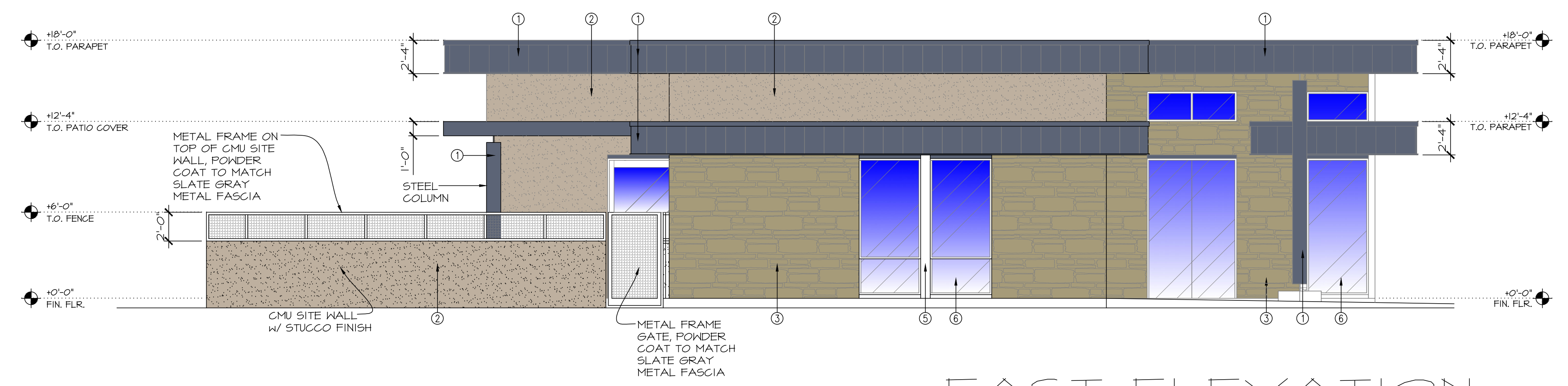


DESIGN T-480-894-1680 F-480-894-2529
PROFESSIONALS, L.L.C.
 4542 E. McKellips Rd., Ste. 101, Mesa, AZ 85215

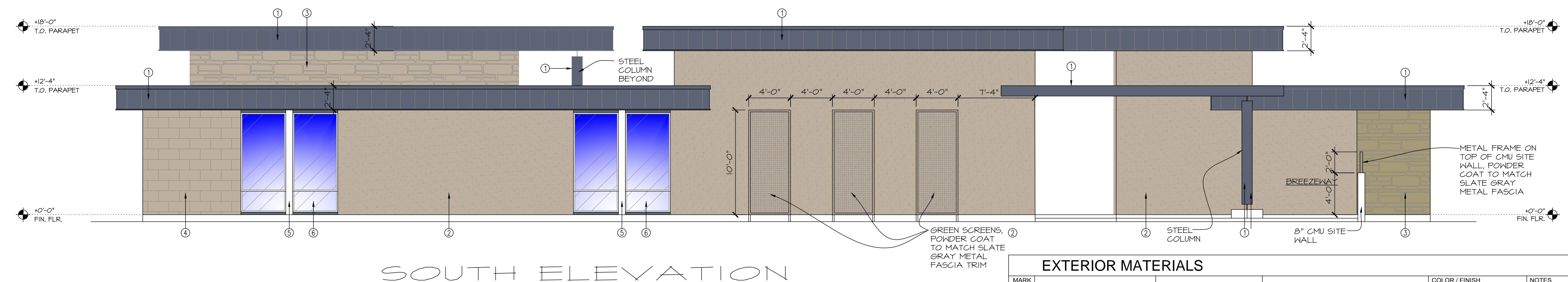
UDALL OFFICE CENTER FOR:
 CLEVELAND ENTERPRISES N.A. LLC
 3553 E. McDowell Rd. Mesa, Arizona 85213

SHEET A-4
 EXTERIOR ELEVATIONS
 DATE 3-16-26 DWN. BY jm

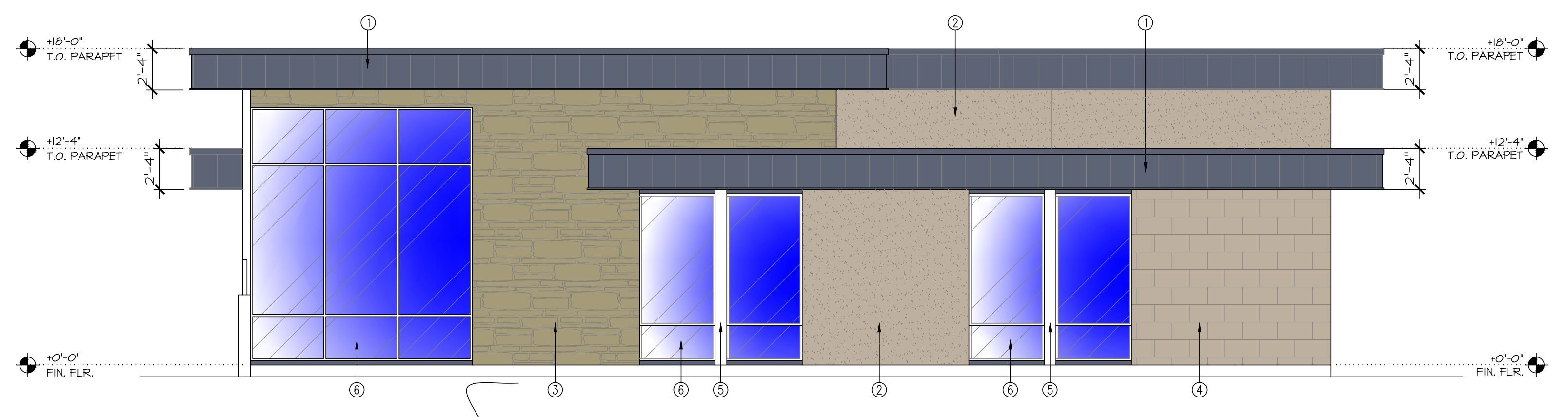
PROJECT NO
 2503



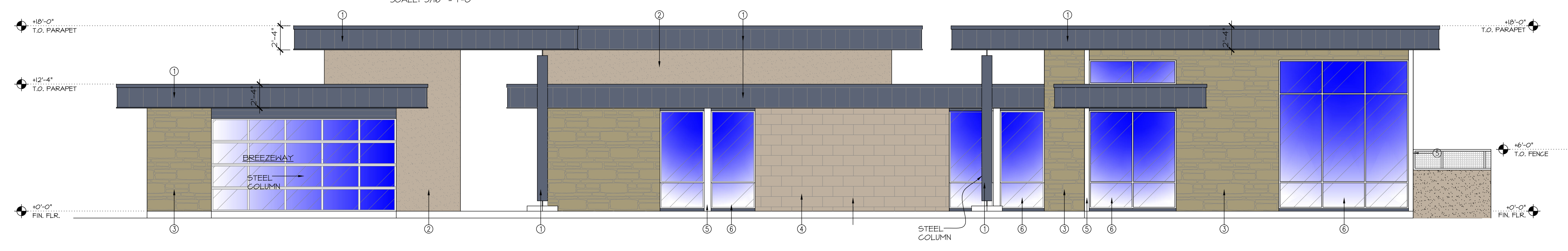
EAST ELEVATION
 SCALE: 3/16" = 1'-0"



SOUTH ELEVATION
 SCALE: 3/16" = 1'-0"



WEST ELEVATION
 SCALE: 3/16" = 1'-0"



NORTH ELEVATION
 SCALE: 3/16" = 1'-0"

EXTERIOR MATERIALS				
MARK	MATERIAL	DESCRIPTION	COLOR / FINISH	NOTES
①	METAL FASCIA	24 GA. METAL	MIELLER METAL BUILDINGS	
②	STUCCO FINISH	PAINTED STUCCO	DANN EDWARDS PAINT	EXPOSED STEEL COLUMNS PAINTED TO MATCH
③	STONE VENEER	STONE	NORTHERN STONE SUPPLY / ARIZONA STONE	ROCKY MOUNTAIN GRANITE LEDGE 2' 4" 6"
④	WALL TILE	TILE	SOLSTICE STONE	12"x24" - TEXTURE, COMBED
⑤	WINDOW MULLION	METAL	OLDCASTLE	BRONZE
⑥	TINTED GLASS	GLASS	MODERN GLASS - TEMPE, AZ	STOREFRONT GLASS

EXTERIOR MATERIAL PERCENTAGES			
EXTERIOR LOCATION	MATERIAL	AREA	PERCENTAGE
NORTH WALL	METAL FASCIA	478 S.F.	24.44 %
	STUCCO FINISH	221 S.F.	11.60 %
	STONE VENEER	350 S.F.	17.88 %
	WALL TILE	190 S.F.	9.70 %
	WINDOWS & GLASS	630 S.F.	32.14 %
EAST WALL			
METAL FASCIA	282 S.F.	24.46 %	
STUCCO FINISH	323 S.F.	28.23 %	
STONE VENEER	331 S.F.	28.43 %	
WALL TILE	0 S.F.	0.00 %	
WINDOWS & GLASS	250 S.F.	21.85 %	
SOUTH WALL			
METAL FASCIA	450 S.F.	22.84 %	
STUCCO FINISH	811 S.F.	41.14 %	
STONE VENEER	175 S.F.	8.84 %	
WALL TILE	0 S.F.	0.00 %	
WINDOWS & GLASS	150 S.F.	7.61 %	
WEST WALL			
METAL FASCIA	276 S.F.	24.12 %	
STUCCO FINISH	184 S.F.	16.50 %	
STONE VENEER	181 S.F.	16.34 %	
WALL TILE	116 S.F.	10.13 %	
WINDOWS & GLASS	362 S.F.	31.64 %	