



Design Review Board



DRB23-00865

Larry H. Miller Ford Mesa



Request

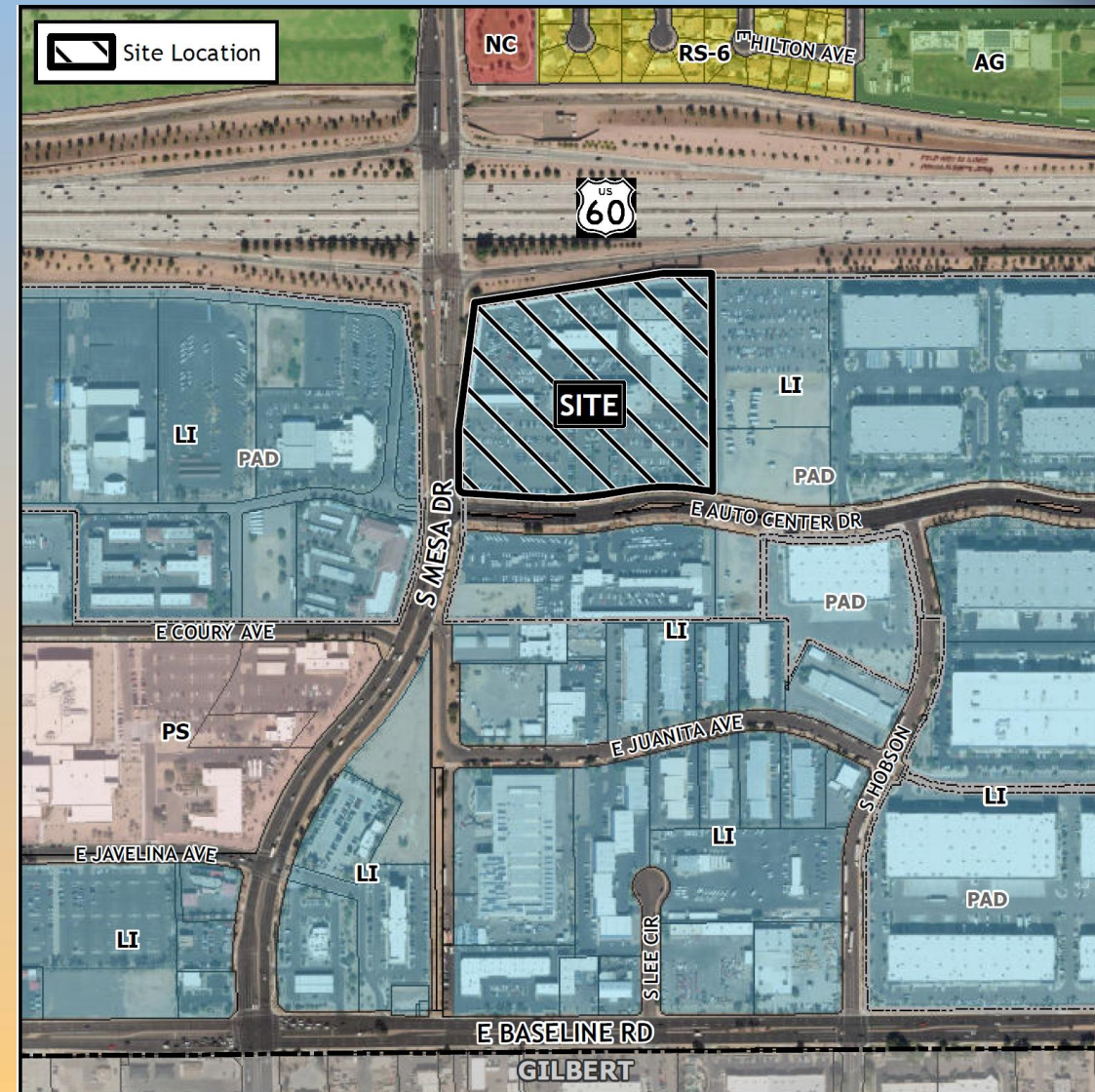
- Design Review
- To allow an automobile dealership





Location

- South of US Highway 60
- East of Mesa Drive
- North of Auto Center Drive





Site Photo



Looking east from Mesa Drive



Site Photo

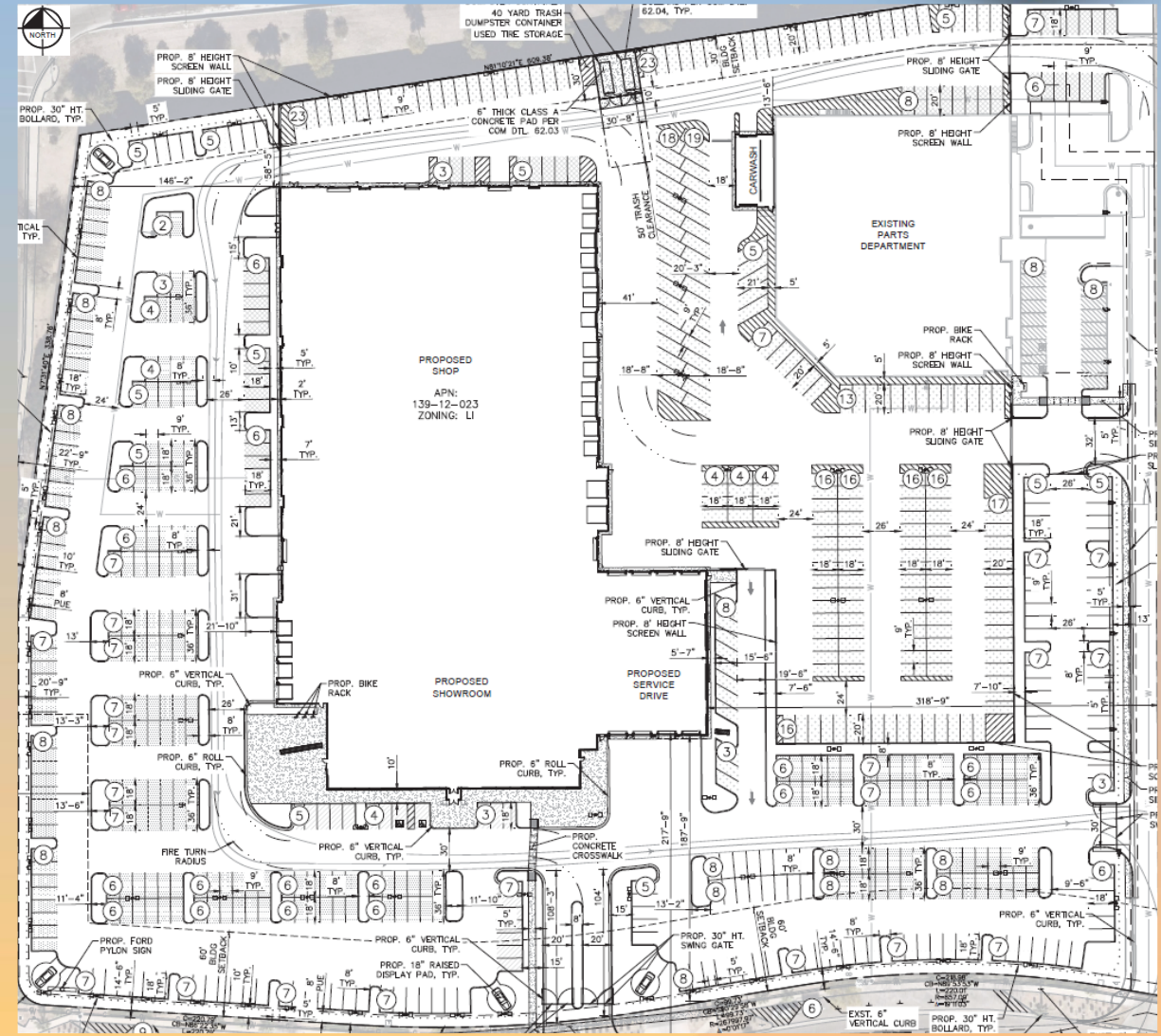


Looking north from Auto Center Drive



Site Plan

- 103,690 sq. ft. building
- New vehicle display as well as customer, employee and storage parking areas
- Service and storage parking areas will be screened with an 8-foot-tall wall
- Access from East Auto Center Drive


















Landscape Plan

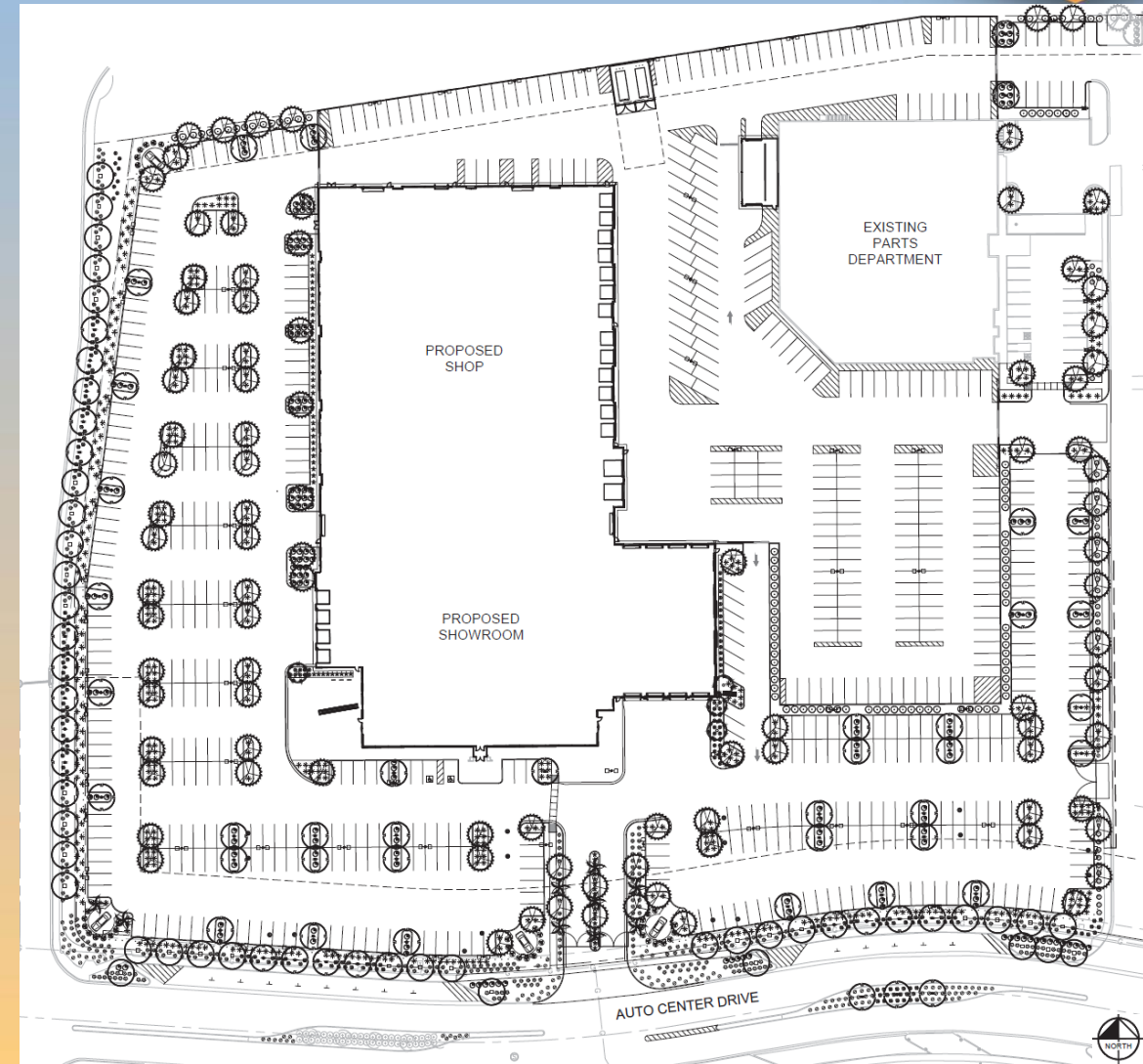
PLANTING LEGEND

TREES (*LARGER SPECIMENS LABELED ON PLANS)

	BOTANICAL NAME / COMMON NAME	SIZE	QTY
	Existing Palm To Remain Species Varies	Size Varies	5
	Acacia aneura Mulga	1 3/4" Cal. Min., 6' Ht. Min., 3' Sp. Min., 24" Box Min.	59
	Phoenix dactylifera Date Palm	18' Clear Trunk Height	9
	Quercus virginiana 'Cathedral' Cathedral Live Oak	2" Cal. Min., 10' Ht. Min., 6' Sp. Min., 36" Box Min.	28
		*3" Cal. Min., 13' Ht. Min., 8' Sp. Min., 48" Box Min.	7
	Sophora secundiflora Texas Mountain Laurel	1 1/2" Cal. Min., 6' Ht. Min., 3' Sp. Min., 36" Box Min.	4
	Ulmus parvifolia 'True Green' True Green Evergreen Elm	1 1/2" Cal. Min., 8' Ht. Min., 4' Sp. Min., 24" Box Min.	76
		*2" Cal. Min., 10' Ht. Min., 6' Sp. Min., 36" Box Min.	19

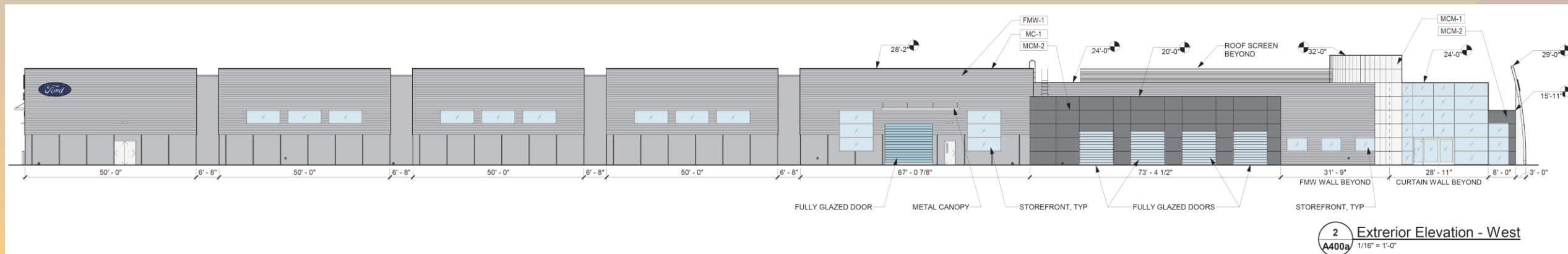
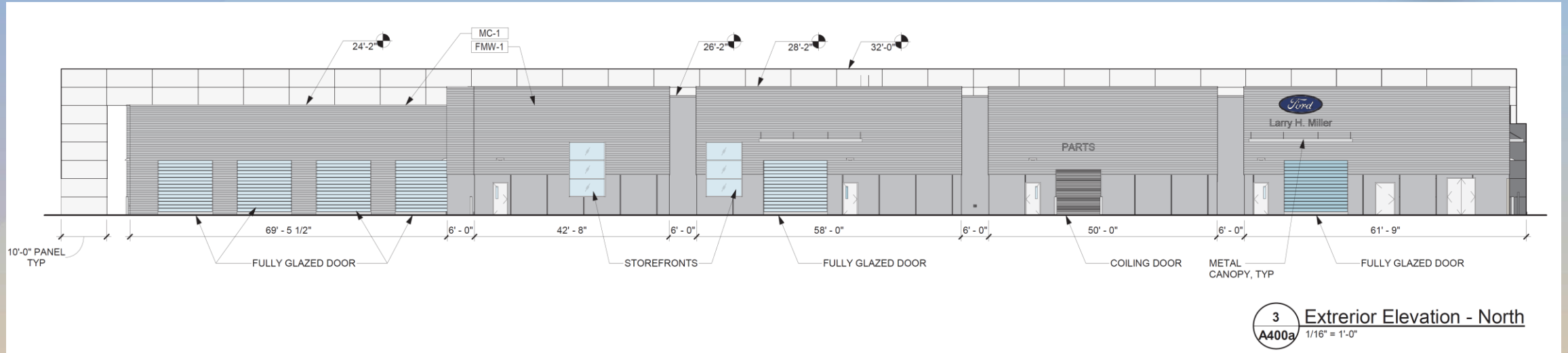
SHRUBS

	BOTANICAL NAME / COMMON NAME	SIZE	QTY
	Bougainvillea x 'Torch Glow' Torch Glow Bougainvillea	5 Gal.	40
	Eremophila hygrophana Blue Bells	5 Gal.	179
	Leucophyllum x candidum 'Microburst' Microburst Sage	5 Gal.	39
	Ruellia peninsularis Baja Ruellia	5 Gal.	189
	Tecoma stans Yellow Bells	5 Gal.	96



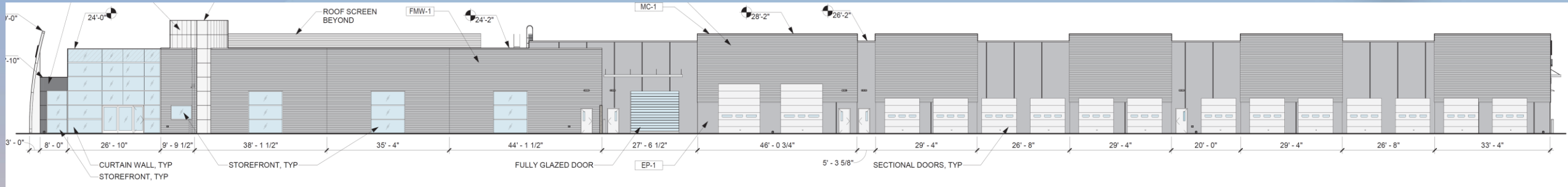


Elevations

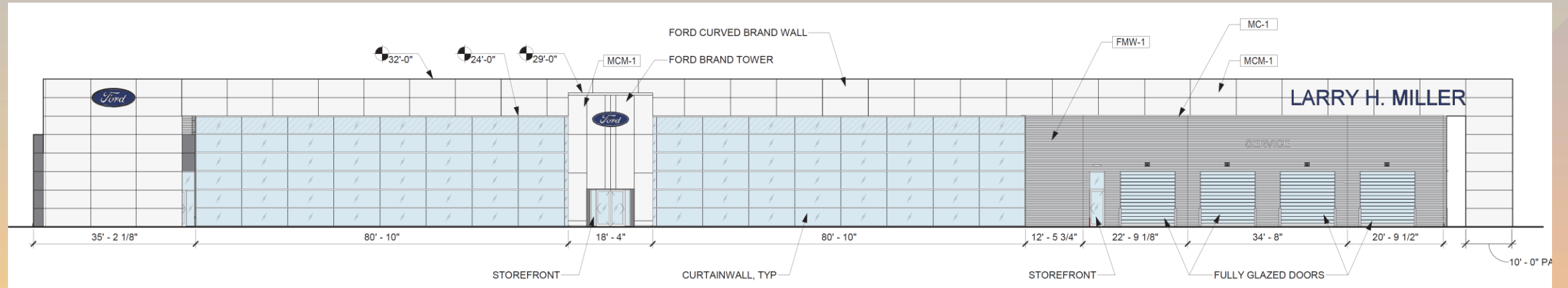




Elevations



4 Exterior Elevation - East
A400a 1/16" = 1'-0"



1 Exterior Elevation - South
A400a 1/16" = 1'-0"



Rendering

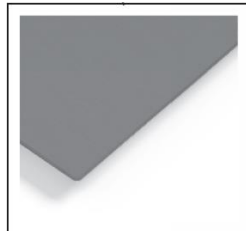




Colors and Materials



MCM-2
PEWTER
RENOBOND COLORWELD 500



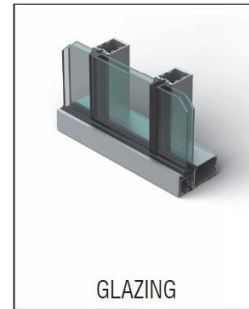
MCM-1
LONG BRUSHED ALUMINUM
RENOBOND COLORWELD LF



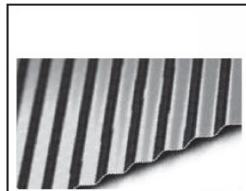
RYTEC FULL VISION
HIGH SPEED ROLL-UP
DOORS



INSULATED
SECTIONAL STEEL
DOORS PAINTED



GLAZING



FMW-1
COLORWELD 500 - SLATE GREY
(BN5A179B) 30% GLOSS
7/8" CORRUGATED SIDING



PAINT EP-1



Alternative Compliance

- ✓ Materials. Facades shall incorporate at least 3 different materials
- ✓ Materials. No more than 50% of the façade may be covered with one single material
- ✓ Wall Articulation. Exterior building walls shall be subdivided and proportioned to human scale, using projections, overhangs and recesses



Findings

Staff is seeking your review and recommendation on the following:

- ✓ Proposed building elevations and landscape design
- ✓ Alternative Compliance

Staff welcomes any feedback



Design Review Board