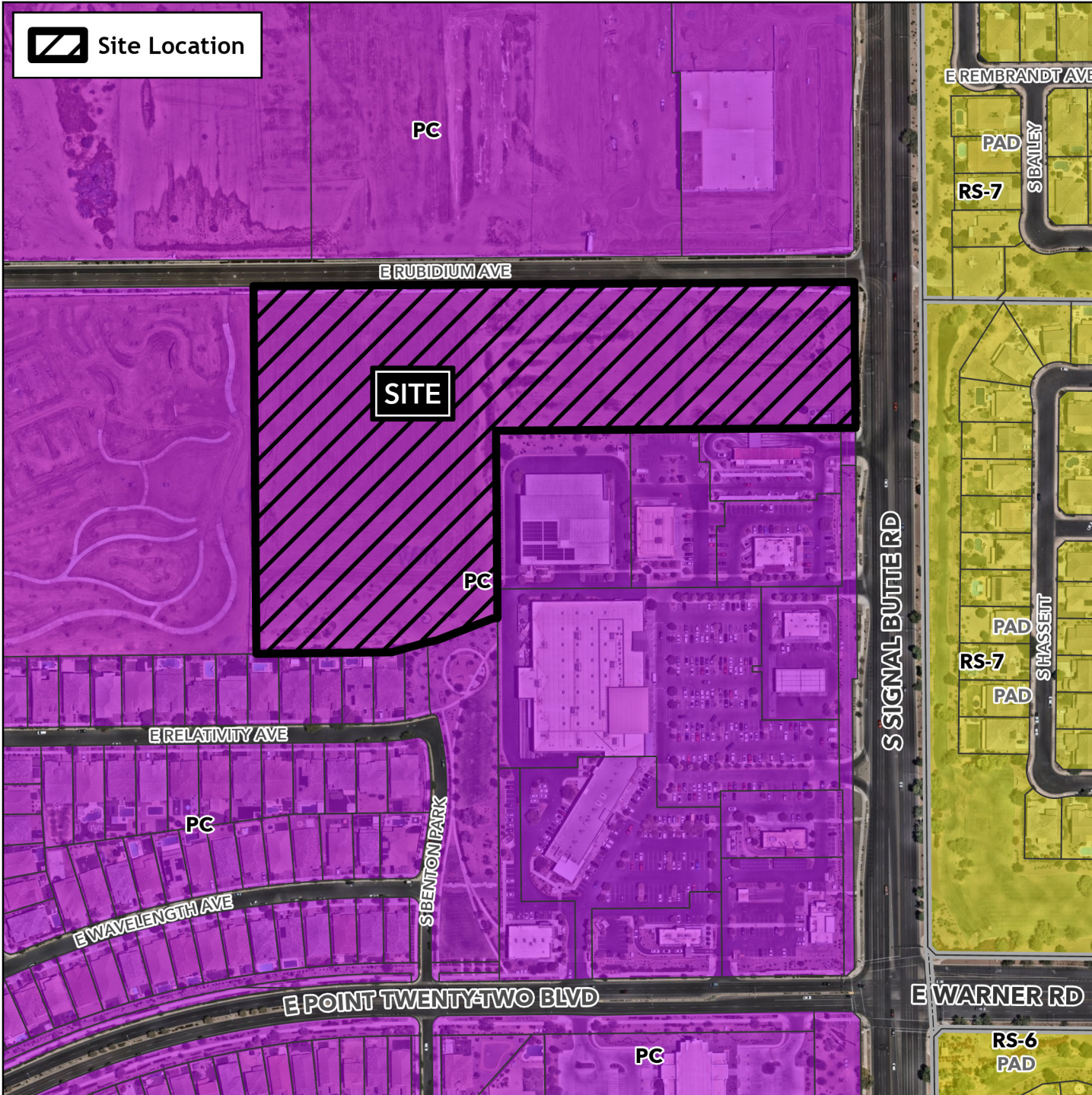


# Planning and Zoning Vicinity Map: ZON25-00693

# Case Details

 Site Location



**Case:**  
ZON25-00693

**Site / Address:**  
(District 6). 11.7± acres located at the southwest corner of South Signal Butte Road and East Rubidium Avenue.

**Request:**  
Major Site Plan Review. This request will allow for a 261-unit Multiple Residence development and approximately 10,840± square feet of commercial development.

