

TRASH ENCLOSURE DETAILS AND NOTES

SCALE: N.T.S.

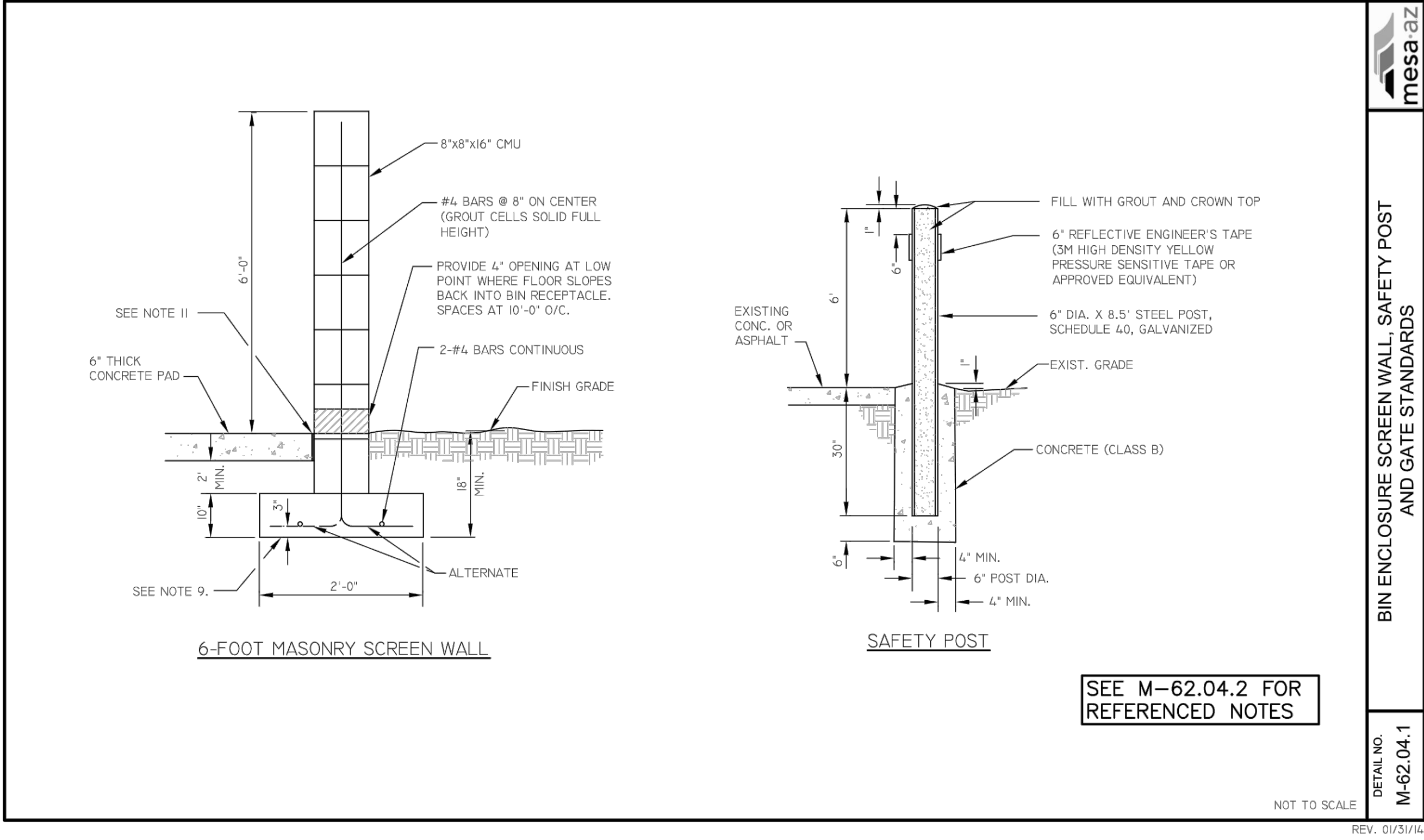
THIS SITE PLAN HAS BEEN PREPARED WITHOUT THE AID OF A SURVEY. ALL PROPERTY BOUNDARIES ARE ROUGH APPROXIMATIONS. THIS DRAWING IS TO BE USED FOR CONCEPTUAL PURPOSES ONLY AND IT IS NOT TO BE THE BASIS FOR ANY LEGALLY BINDING DOCUMENTATION.

UNIVERSITY MULTI-USE  
4312 E UNIVERSITY DRIVE  
MESA ARIZONA 85205  
DATE: 07-17-2023 (PRELIMINARY)

© 2021 R K A A  
ARCHITECTS, INC. ALL  
RIGHTS RESERVED.  
THIS DRAWING IS AN  
INSTRUMENT OF  
SERVICE. IT IS THE  
PROPERTY OF R K A A  
ARCHITECTS, INC. AND  
M A Y N O T B E  
DUPLICATED, USED OR  
DISCLOSED WITHOUT  
WRITTEN PERMISSION  
OF THE ARCHITECT.

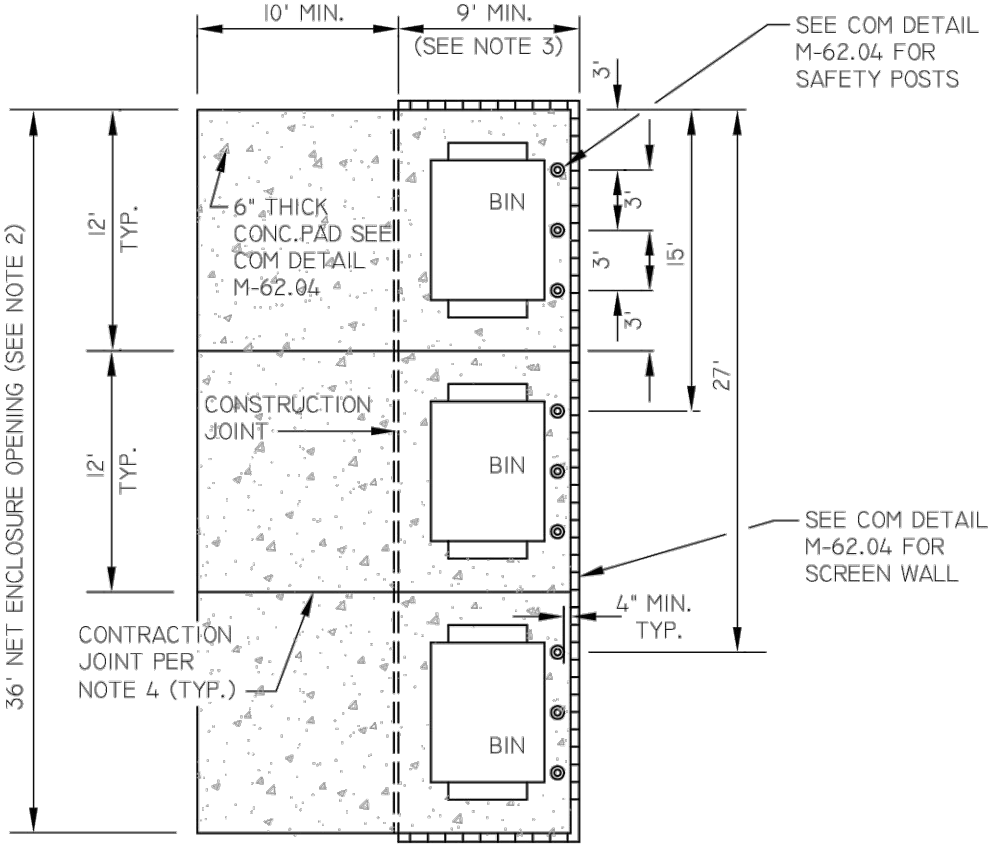
SP-3

RKAA# 19066.00



NOTES

- MULTI-UNIT RESIDENTIAL DEVELOPMENTS MAY BE DESIGNED WITH A TRIPLE-WIDE ENCLOSURE TO ACCOMMODATE RECYCLING. ADDITIONAL ENCLOSURES MAY BE NECESSARY DEPENDING ON NUMBER OF UNITS. TOTAL VOLUME NEEDS ARE ADDRESSED IN COM DETAIL M-62.02.
- TRIPLE-WIDE ENCLOSURES SHALL HAVE A NET ENCLOSURE OPENING OF 36 FEET AND SHALL BE DESIGNED WITHOUT MIDWALLS. GATES, HINGES, AND MOUNTING HARDWARE SHALL NOT INTRUDE UPON MINIMUM NET ENCLOSURE OPENING. GATES MUST BE ABLE TO OPEN SIMULTANEOUSLY.
- GATES, HINGES, SAFETY POSTS, AND MOUNTING HARDWARE SHALL BE INSTALLED SO THERE IS A MINIMUM 9 FOOT DEPTH CREATED WITHIN EACH ENCLOSURE.
- BIN ENCLOSURES ARE TO BE ANGLED NO MORE THAN 30 DEGREES FROM THE CENTER LINE OF THE SOLID WASTE COLLECTION VEHICLE ROUTE.
- GATES, HINGES, SAFETY POSTS, AND MOUNTING HARDWARE SHALL NOT INTRUDE UPON MINIMUM NET ENCLOSURE OPENING SO THERE IS A MINIMUM 12" WIDTH CLEAR WITHIN EACH ENCLOSURE.

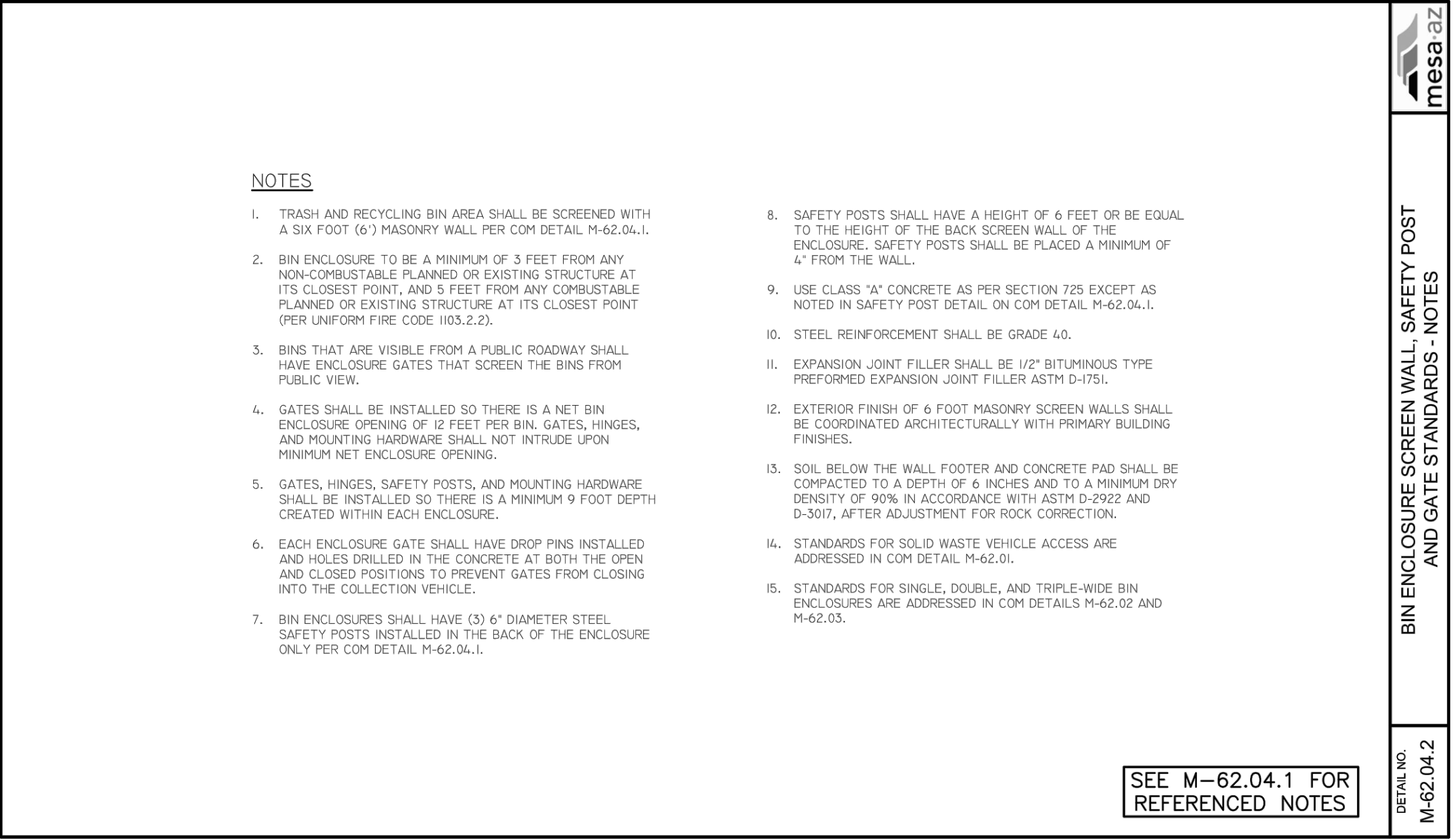


NOT TO SCALE

REV. 02/03/2016

DETAIL NO. M-62.03

TRIPLE-WIDE BIN ENCLOSURES



REV. 01/31/14

DETAIL NO. M-62.04.2

BIN ENCLOSURE SCREEN WALL, SAFETY POST AND GATE STANDARDS - NOTES





