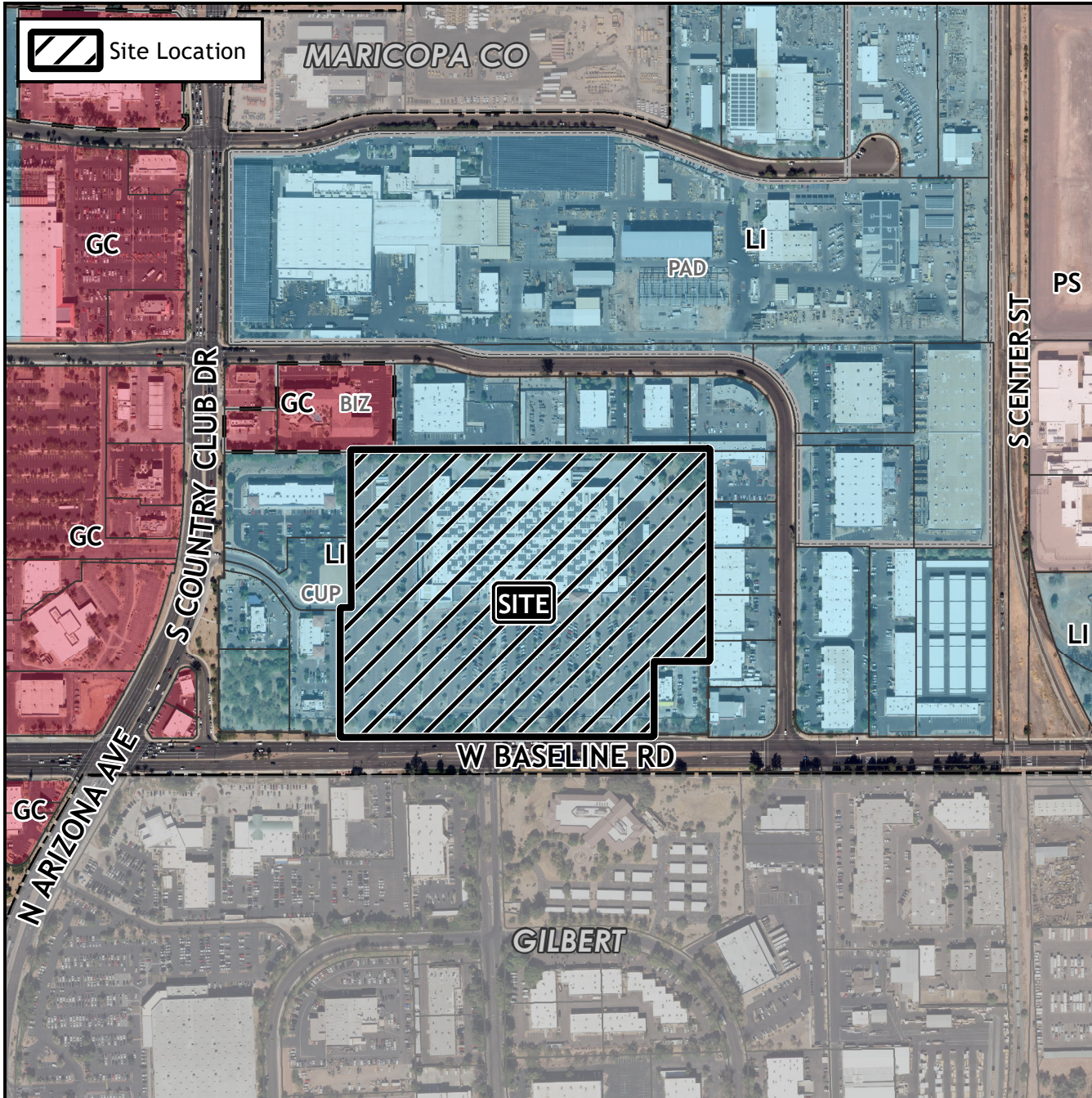


# Board of Adjustment Vicinity Map: BOA24-00104

# Case Details



## Case:

BOA24-00104

## Site / Address:

(District 4). 330 West Baseline Road.  
Located east of Country Club Drive on  
the north side of Baseline Road.

## Request:

Requesting a Special Use Permit (SUP) for  
a Service Station in the Light Industrial  
(LI) District.

