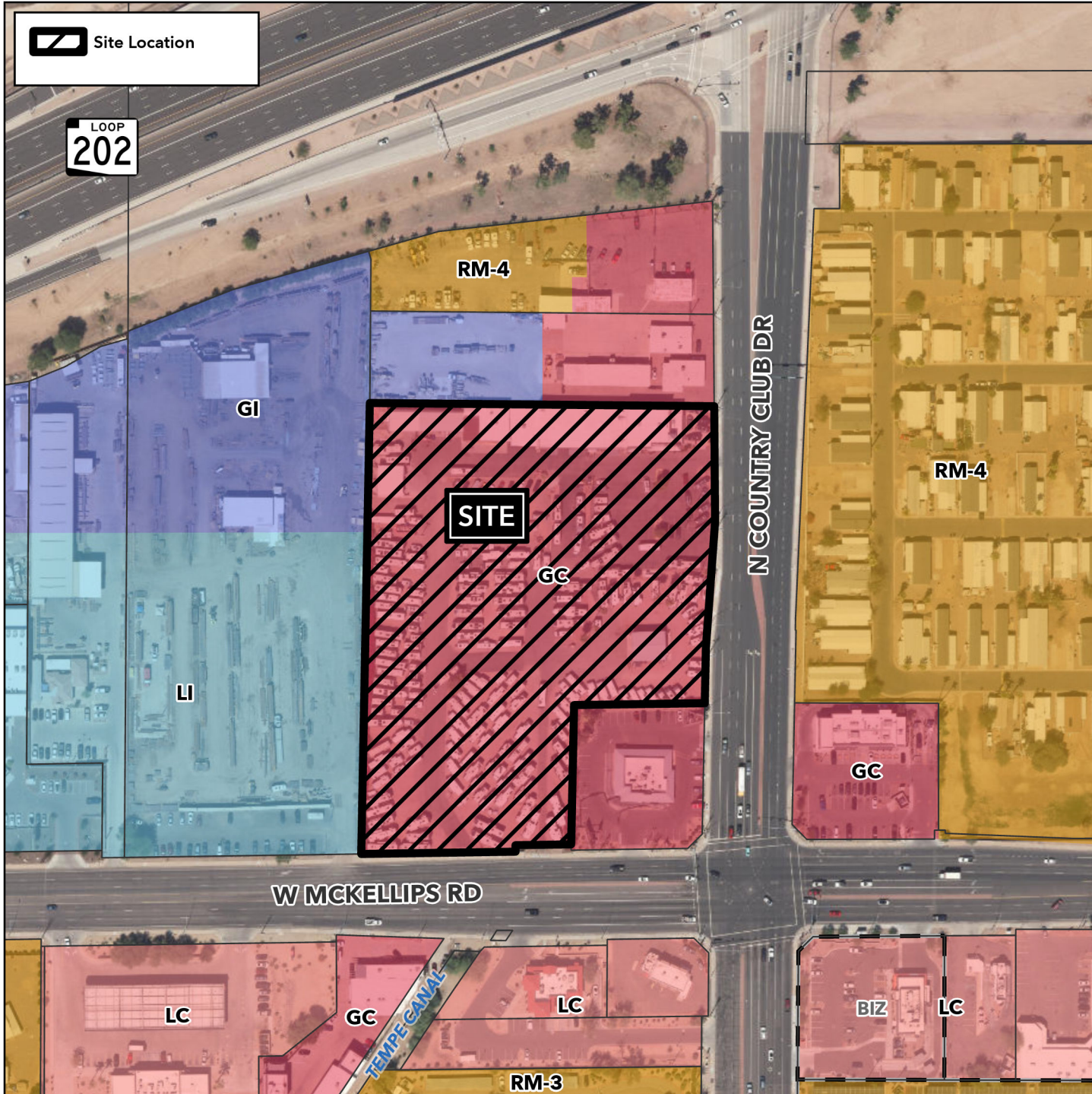


Design Review Vicinity Map: DRB25-00910

Case Details

 Site Location

LOOP
202



Case:

DRB25-00910

Site / Address:

(District 3) 5.8± acres located at 2038 North Country Club Drive.

Request:

Design Review to allow for a 7,975± square foot expansion of an existing Automobile/Vehicle Sales and Service Facility.

