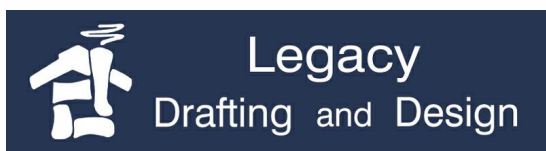


# FRONT ELEVATION

	STUCCO - ERGET WHITE	STUCCO - STONEHENGE GREIGE	PLANK LAP SIDING - TIMBER BARK	BRICK VENEER	GLAZING / DOORS
FRONT	17%	14%	29%	16%	24%
LEFT	57%	0%	10%	26%	7%
BACK	17%	14%	29%	16%	24%
RIGHT	57%	0%	10%	26%	7%

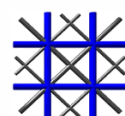
MATERIAL LEGEND	
NUMBER	MATERIAL
01	STUCCO - EGERT WHITE
02	STUCCO - STONEHENGE GREIGE
04	BRICK VENEER - BELDEN BRICK - TITANIUM VELOUR
05	VINYL FRAMED WINDOWS
06	PLANK LAP SIDING - TIMBER BARK
07	METAL MESH



962 W 800 N, OREM, UT 84057  
801.735.6314 | greg@legacyhomedesign.com  
legacyhomedesign.com



2696 N University Ave, Ste. 100  
Provo, UT 84604



Guilford A. Rand - Architect

962 W 800 N, OREM, UT 84057  
801.362.0343 | archcoalition@hotmail.com

## REED PARK

MESA, AZ

### SQUARE FOOTAGE

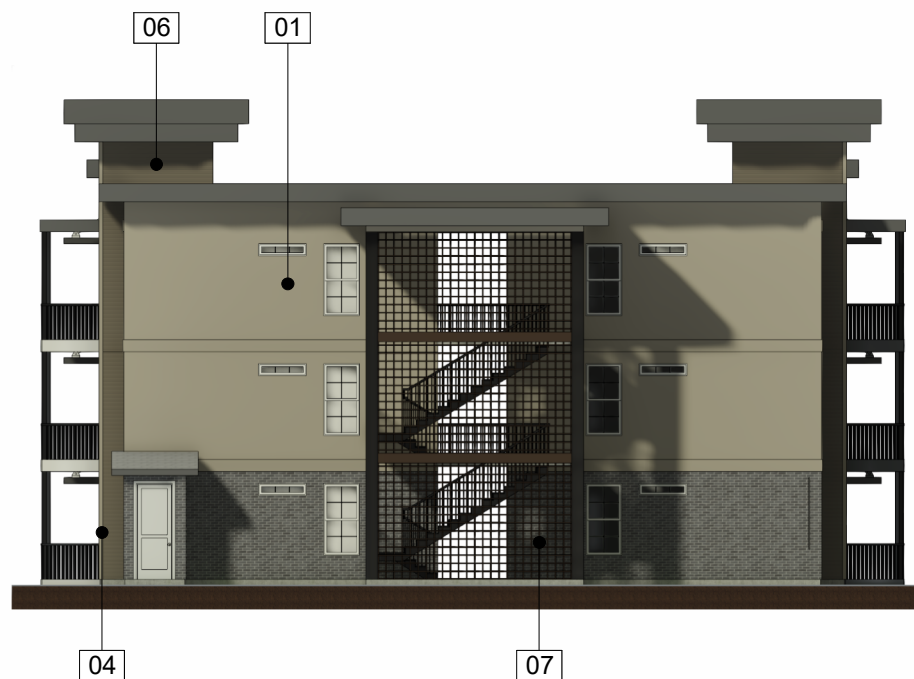
UNITS		BUILDING	
2 BEDROOM	879 SF	MAIN LEVEL	2916 SF
3 BEDROOM	1137 SF	SECOND LEVEL	2916 SF
		THIRD LEVEL	2916 SF
		TOTAL AREA	8747 SF

5/24/2023

A1

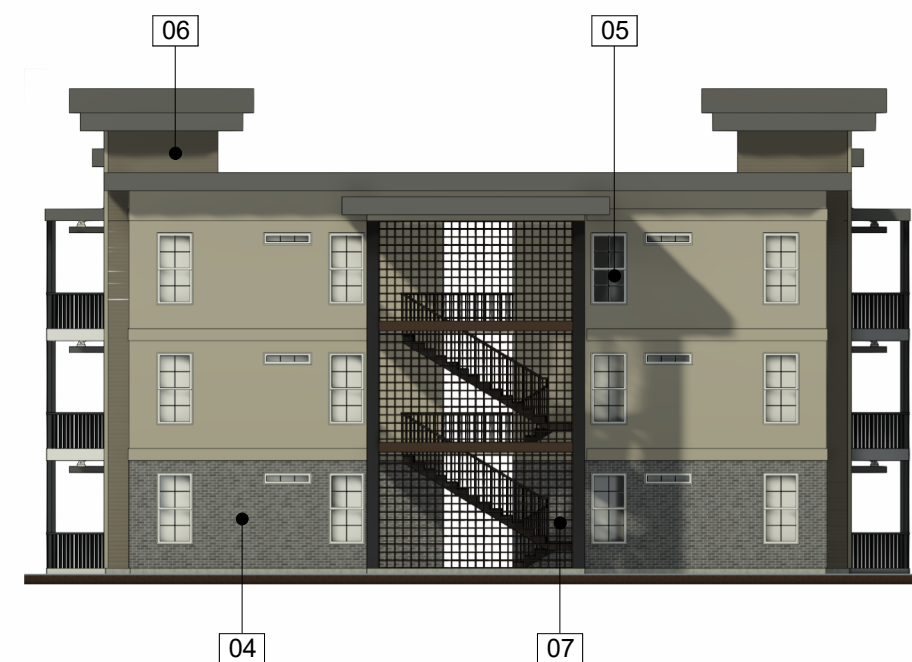


## BACK ELEVATION



## RIGHT ELEVATION

MATERIAL LEGEND	
NUMBER	MATERIAL
01	STUCCO - EGERT WHITE
02	STUCCO - STONEHENGE GREIGE
04	BRICK VENEER - BELDEN BRICK - TITANIUM VELOUR
05	VINYL FRAMED WINDOWS
06	PLANK LAP SIDING - TIMBER BARK
07	METAL MESH



## ELEVATION ALONG STREET

### SQUARE FOOTAGE

UNITS		BUILDING	
2 BEDROOM	879 SF	MAIN LEVEL	2916 SF
3 BEDROOM	1137 SF	SECOND LEVEL	2916 SF
		THIRD LEVEL	2916 SF
		TOTAL AREA	8747 SF

5/24/2023

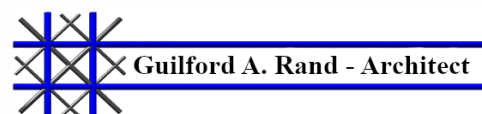
A2



962 W 800 N, OREM, UT 84057  
801.735.6314 | greg@legacyhomedesign.com  
legacyhomedesign.com



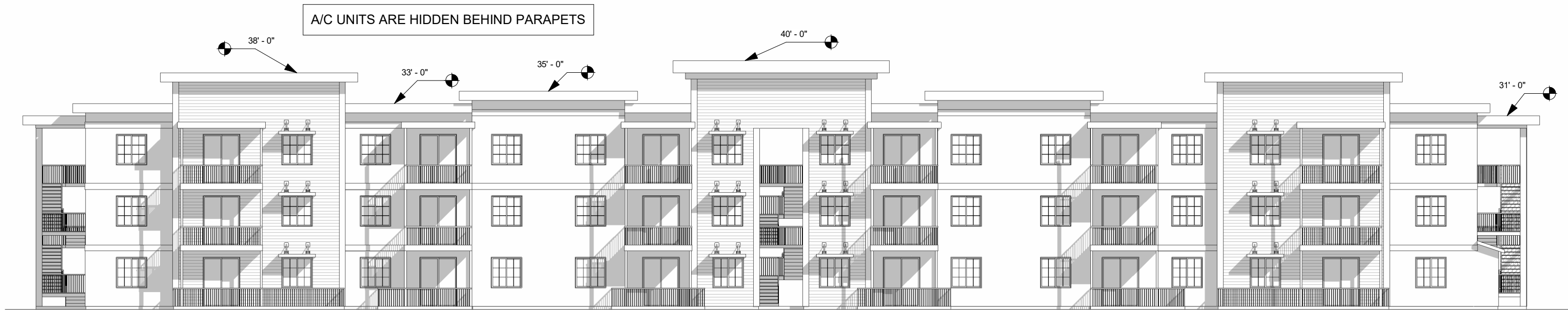
2696 N University Ave, Ste. 100  
Provo, UT 84604



962 W 800 N, OREM, UT 84057  
801.362.0343 | archcoalition@hotmail.com

REED PARK

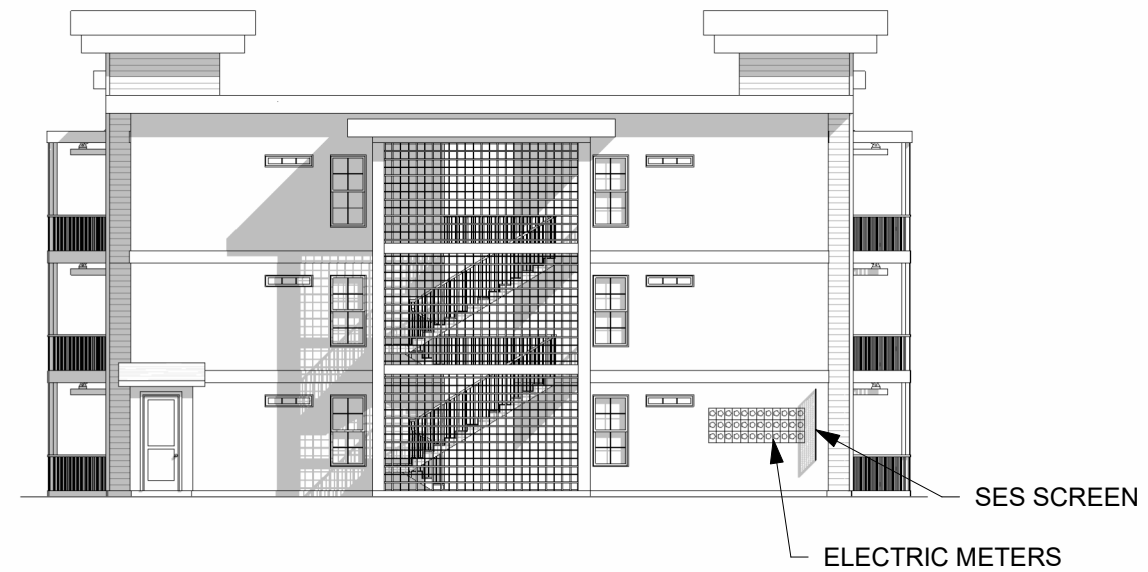
MESA, AZ



# FRONT ELEVATION

**NOTE:**  
DOWNSPOUT TO BE  
INTERNAL TO BUILDING

**NOTE:**  
WINDOWS TO BE RECESSED  
AT LEAST 4 INCHES FROM  
EXTERIOR OF BUILDING



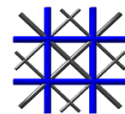
# SIDE ELEVATION



962 W 800 N, OREM, UT 84057  
801.735.6314 | greg@legacyhomedesign.com  
legacyhomedesign.com



2696 N University Ave, Ste. 100  
Provo, UT 84604



Guilford A. Rand - Architect

962 W 800 N, OREM, UT 84057  
801.362.0343 | archcoalition@hotmail.com

## REED PARK

MESA, AZ

### SQUARE FOOTAGE

UNITS		BUILDING	
2 BEDROOM	879 SF	MAIN LEVEL	2916 SF
3 BEDROOM	1137 SF	SECOND LEVEL	2916 SF
		THIRD LEVEL	2916 SF
		TOTAL AREA	8747 SF

5/24/2023

A7

A/C UNITS ARE HIDDEN BEHIND PARAPETS

ELECTIC METERS  
(BEHIND SCREEN)



## BACK ELEVATION

**NOTE:**  
WINDOWS TO BE RECESSED  
AT LEAST 4 INCHES FROM  
EXTERIOR OF BUILDING

**NOTE:**  
DOWNSPOUT TO BE  
INTERNAL TO BUILDING



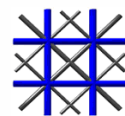
## ELEVATION ALONG STREET



962 W 800 N, OREM, UT 84057  
801.735.6314 | greg@legacyhomedesign.com  
legacyhomedesign.com



2696 N University Ave, Ste. 100  
Provo, UT 84604



Guilford A. Rand - Architect

962 W 800 N, OREM, UT 84057  
801.362.0343 | archcoalition@hotmail.com

## REED PARK

MESA, AZ

### SQUARE FOOTAGE

UNITS		BUILDING	
2 BEDROOM	879 SF	MAIN LEVEL	2916 SF
3 BEDROOM	1137 SF	SECOND LEVEL	2916 SF
		THIRD LEVEL	2916 SF
		TOTAL AREA	8747 SF

5/24/2023

A8

