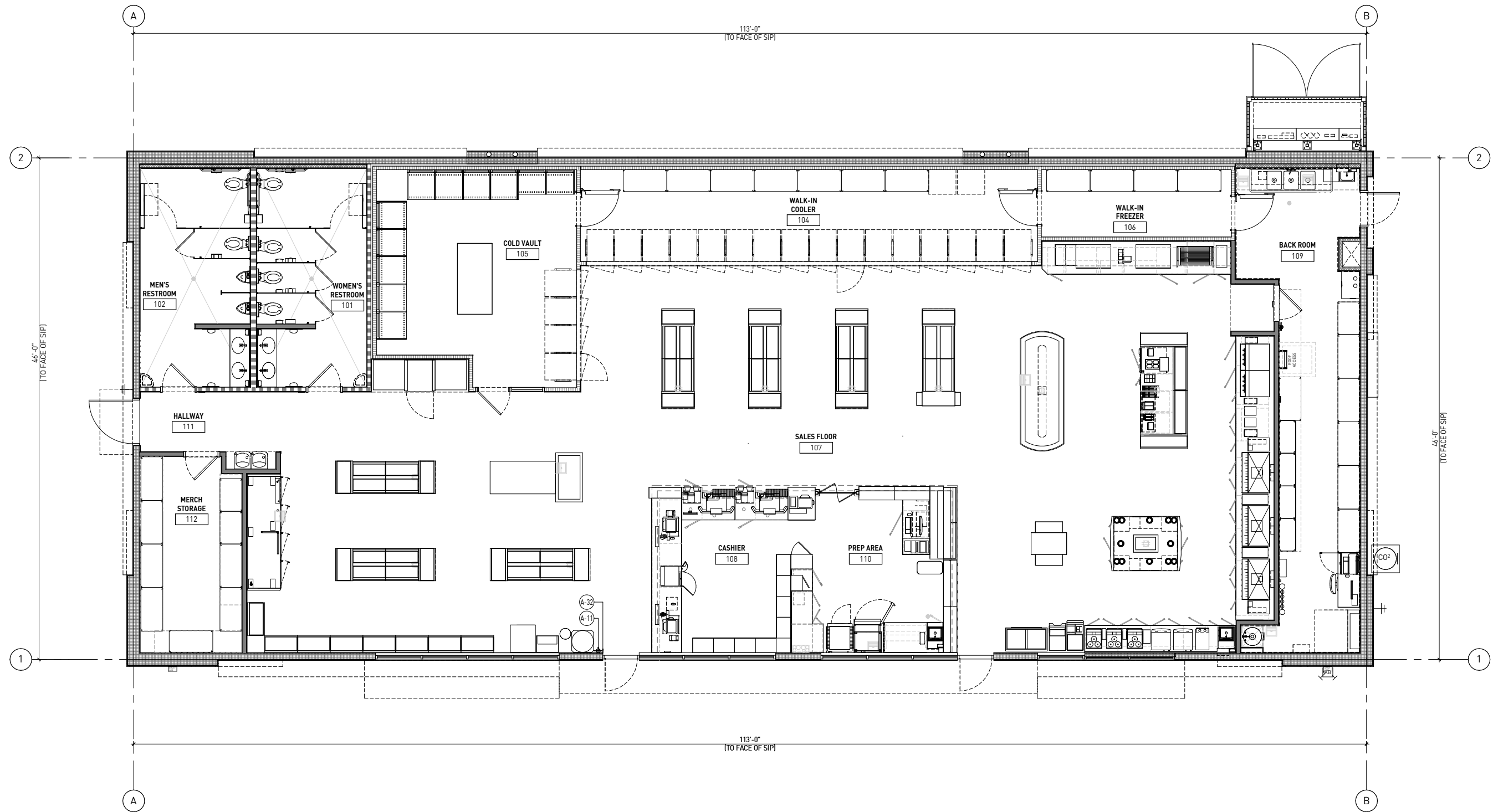


CIRCLE K

MESA (PECOS & SOSSAMAN), AZ

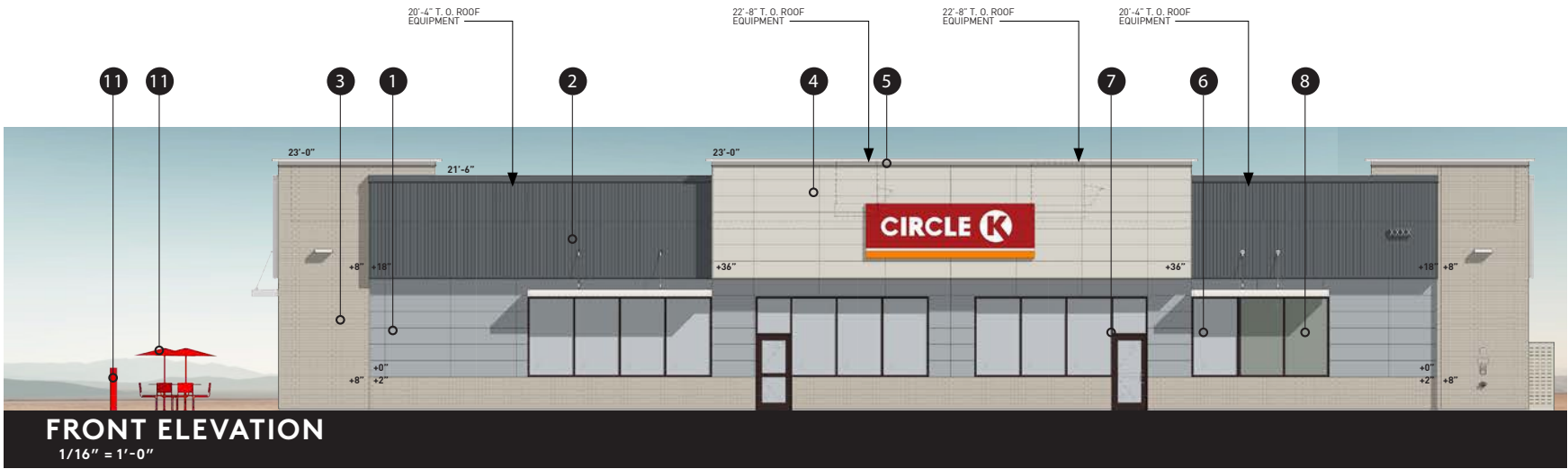
12.02.25

rdc.

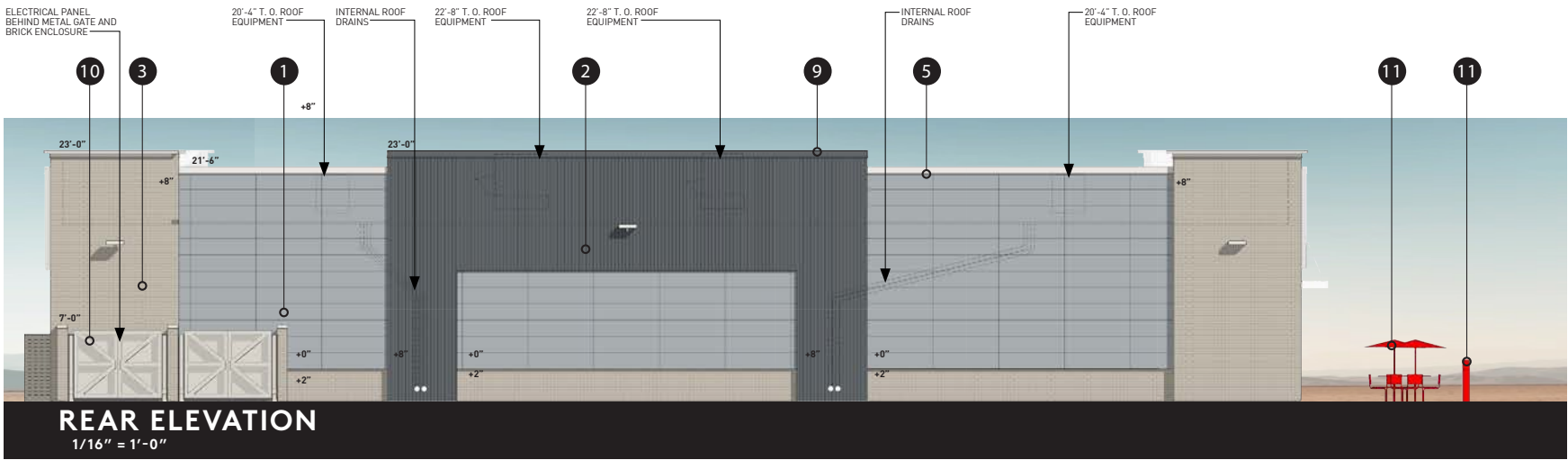


FLOOR PLAN





MATERIAL	SF	%
BRICK CLADDING (GS) OLD EDISTO	634 SF+/-	26.42%
NICHIHA TUFF BLOCK	870 SF+/-	49.00%
MCELROY RIBBED METAL PANEL CHARCOAL	500 SF+/-	24.58%



MATERIAL	SF	%
BRICK CLADDING (GS) OLD EDISTO	723 SF+/-	30.13%
NICHIHA TUFF BLOCK	1,073 SF+/-	44.71%
MCELROY RIBBED METAL PANEL CHARCOAL	604 SF+/-	25.17%

1

NICHIHA
TUFF BLOCK

SW 6255 MORNING FOG

2

MCELROY RIBBED
METAL PANEL

CHARCOAL

3

BRICK CLADDING
GENERAL SHALE

OLD EDISTO

4

NICHIHA
TUFF BLOCK

SW 9166
DRIFT OF MIST

5

METAL COPING

SW 7004
SNOWBOUND

6

INSULATED
CLEAR GLASS

7

ANODIZED WINDOW
FRAMING

DARK BRONZE

8

SPANDREL GLASS

9

METAL COPING

WEB GRAY

10

SWING GATE

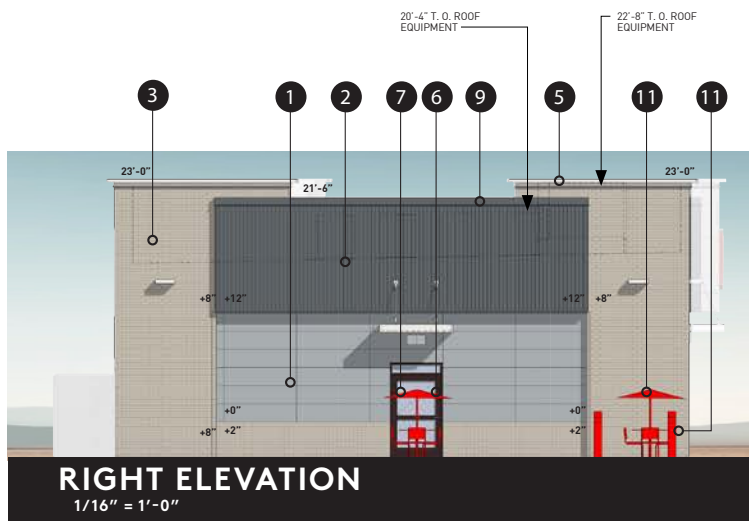
SW 9166
DRIFT OF MIST

11

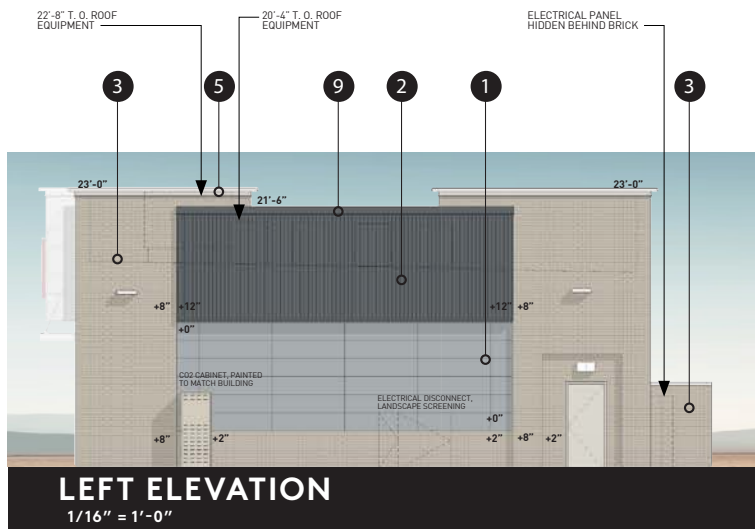
BOLLARD SLEEVES,
UMBRELLA & TABLES

SW CIRCLE K RED

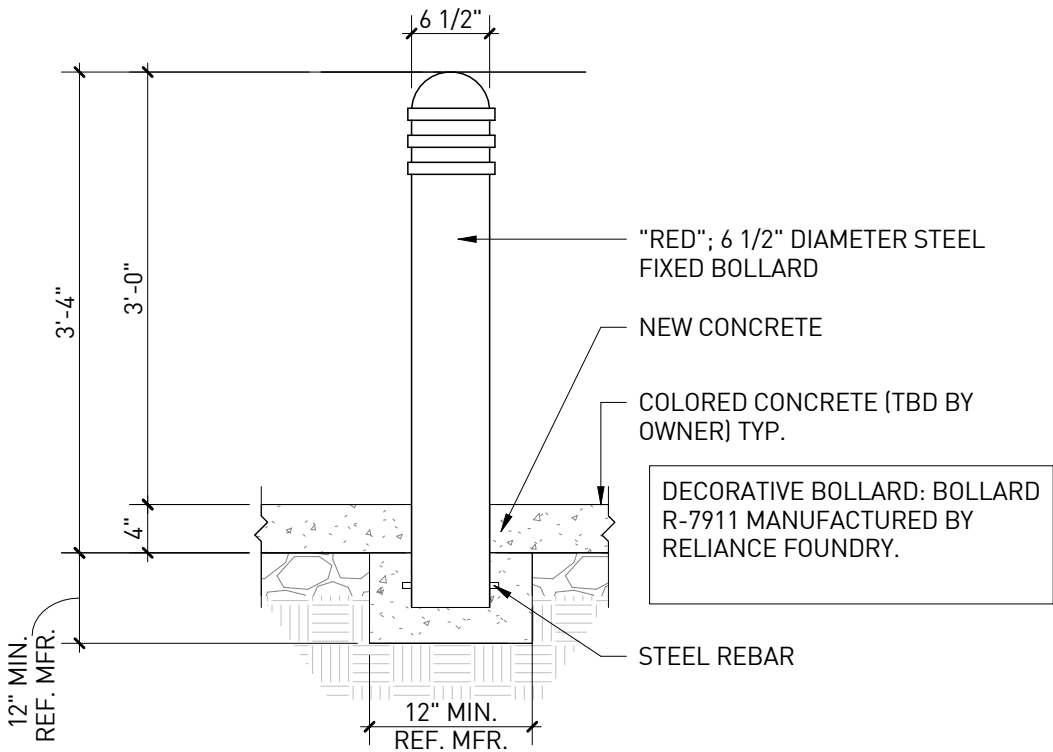





MATERIAL	SF	%
BRICK CLADDING (GS) OLD EDISTO	460 SF+/-	45.01%
NICHIHA TUFF BLOCK	272 SF+/-	26.61%
MCELROY RIBBED METAL PANEL CHARCOAL	290 SF+/-	28.38%



MATERIAL	SF	%
BRICK CLADDING (GS) OLD EDISTO	510 SF+/-	49.90%
NICHIHA TUFF BLOCK	254 SF+/-	24.46%
MCELROY RIBBED METAL PANEL CHARCOAL	259 SF+/-	25.74%




1



NICHIHA
TUFF BLOCK

SW 6255 MORNING FOG


2



MCELROY RIBBED
METAL PANEL

CHARCOAL


3



BRICK CLADDING
GENERAL SHALE

OLD EDISTO

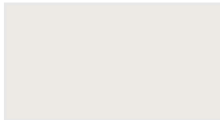
4



NICHIHA
TUFF BLOCK

SW 9166
DRIFT OF MIST


5



METAL COPING

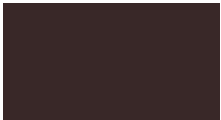
SW 7004
SNOWBOUND

6



INSULATED
CLEAR GLASS


7



ANODIZED WINDOW
FRAMING


DARK BRONZE

8



SPANDREL GLASS


9



METAL COPING

WEB GRAY


10



SWING GATE

SW 9166
DRIFT OF MIST

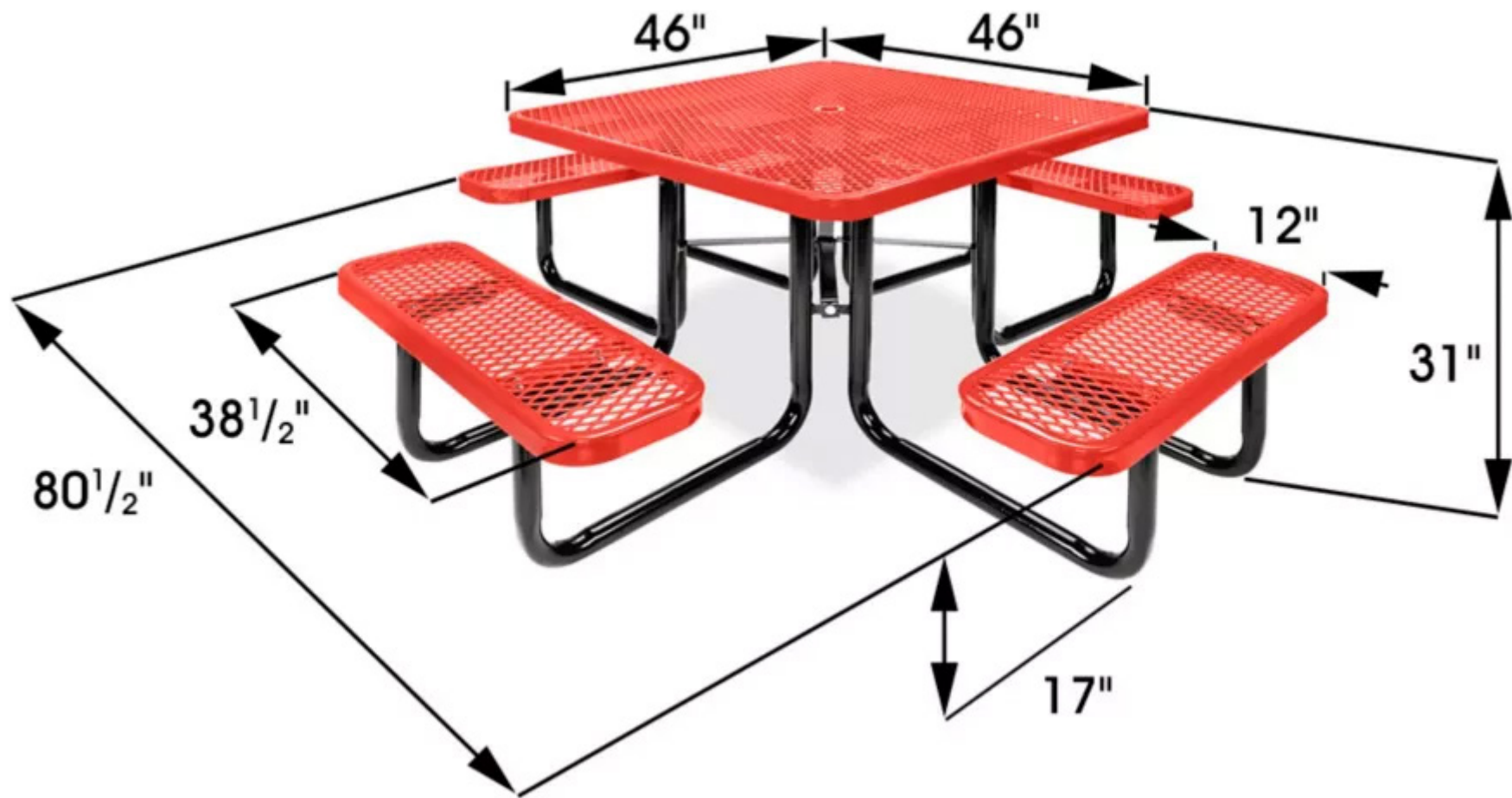
11



BOLLARD SLEEVES,
UMBRELLA & TABLES

SW CIRCLE K RED





BRAND	ULINE
MODEL NO.	H-10829R
DESCRIPTION	46" SQUARE
SIZE LXWXH	80"X80"X31"
WEIGHT (LBS.)	185
COLOR	RED
FEATURES	<ul style="list-style-type: none">• THERMOPLASTIC COATING WITHSTANDS HEAT, COLD AND ALL WEATHER ELEMENTS. RUST FREE.• HIGH GLOSS, SMOOTH SURFACE ALLOWS FOR EASY SPRAY PAINT AND GRAFFITI REMOVAL.• 9 GAUGE EXPANDED METAL WITH 2" BLACK STEEL FRAME.• ROUNDED CORNERS FOR ADDED SAFETY.• MOUNTING HARDWARE INCLUDED.

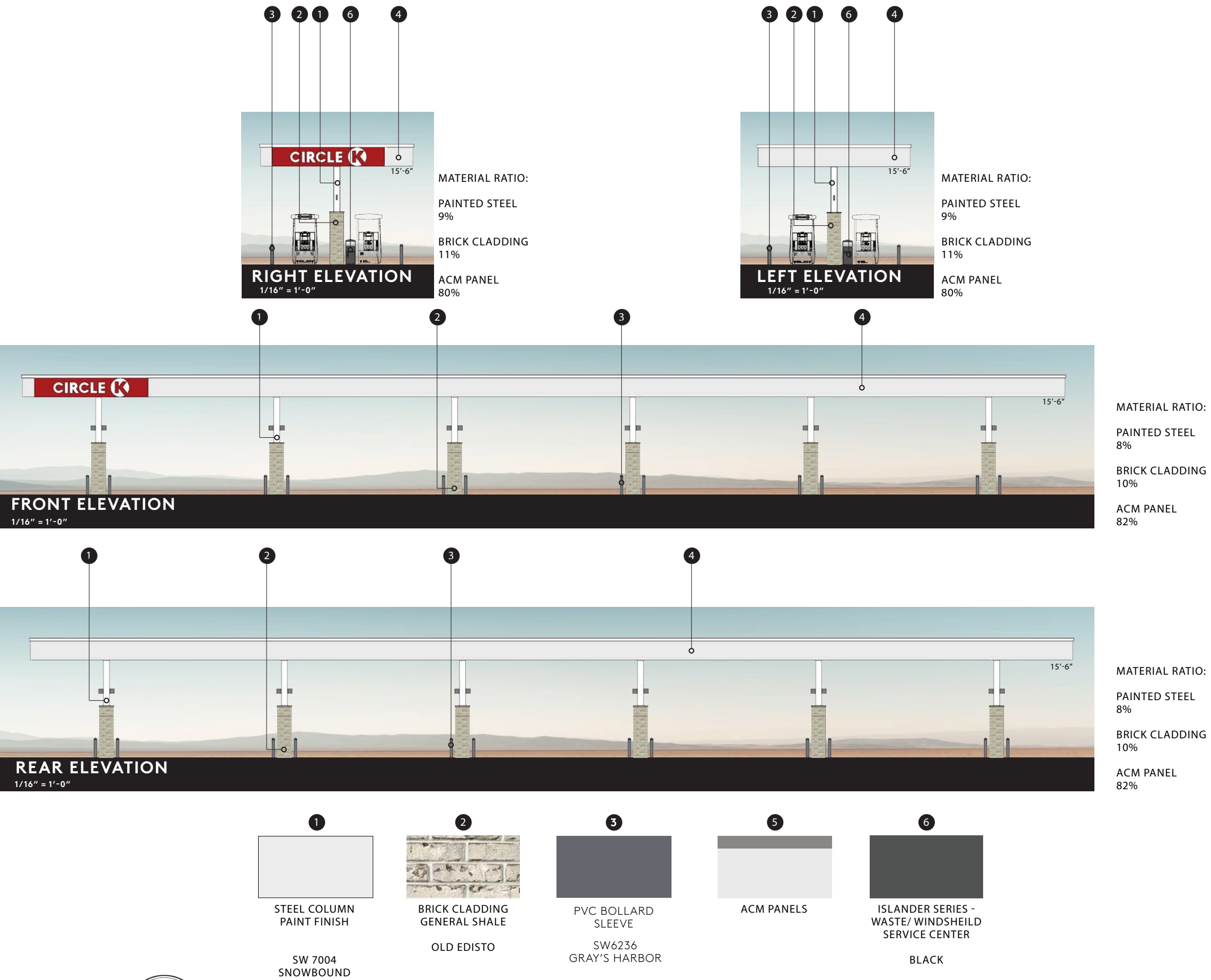


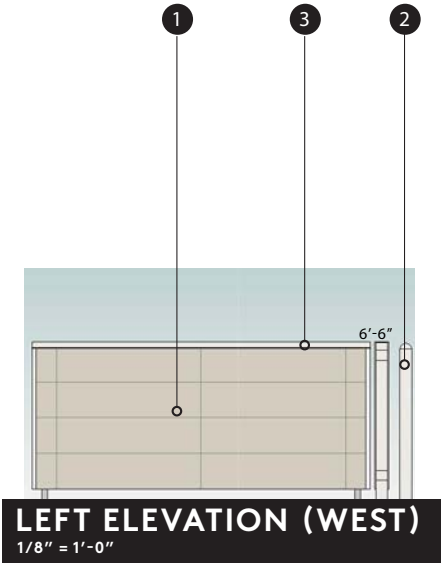
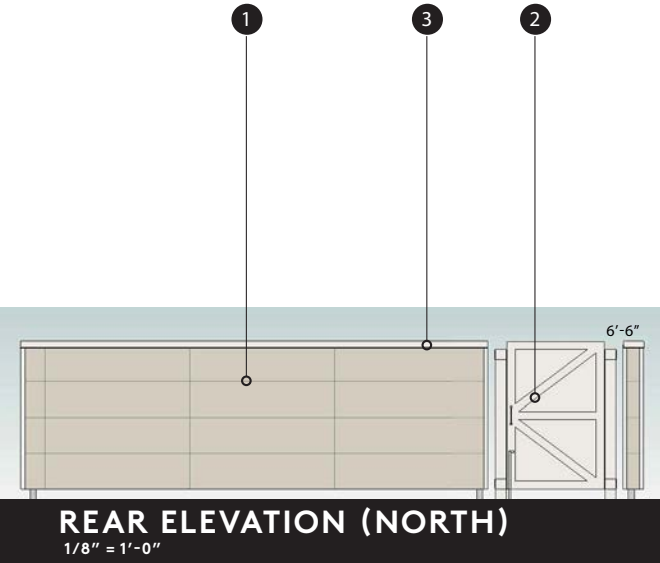
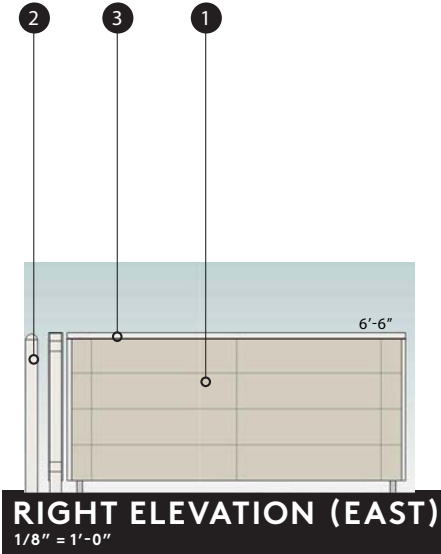
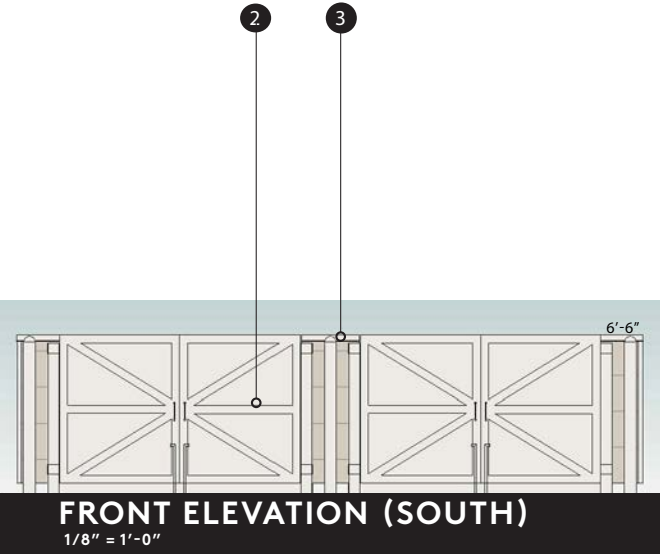


BRAND	ULINE
MODEL NO.	H-8158R
DESCRIPTION	UMBRELLA
SIZE LXWXH	108"X108"X102"
WEIGHT (LBS.)	14
COLOR	RED
FEATURES	<ul style="list-style-type: none">• OPENS TO 9 FT WIDE.• FITS TABLES WITH 1 1/2" CENTER HOLE.• DURABLE SPUN POLYESTER FABIRC RESISTS FADING AND MILDEW + WASHABLE.• USE WITH UMBRELLA BASES, SOLD SEPERATELY


BRAND	ULINE
MODEL NO.	H-8160
DESCRIPTION	UNDER-TABLE BASE
SIZE LXWXH	18"X18"X18"
WEIGHT (LBS.)	35
COLOR	BLACK
FEATURES	<ul style="list-style-type: none">• SLIM, LIGHTWEIGHT DESIGN.







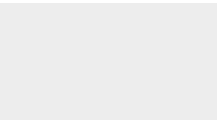
1



NICHIHA
TUFFBLOCK

SW 9166
DRIFT OF MIST

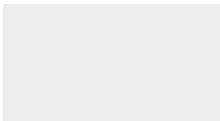
2



METAL GATE AND
BOLLARD

SW 7004
SNOWBOUND

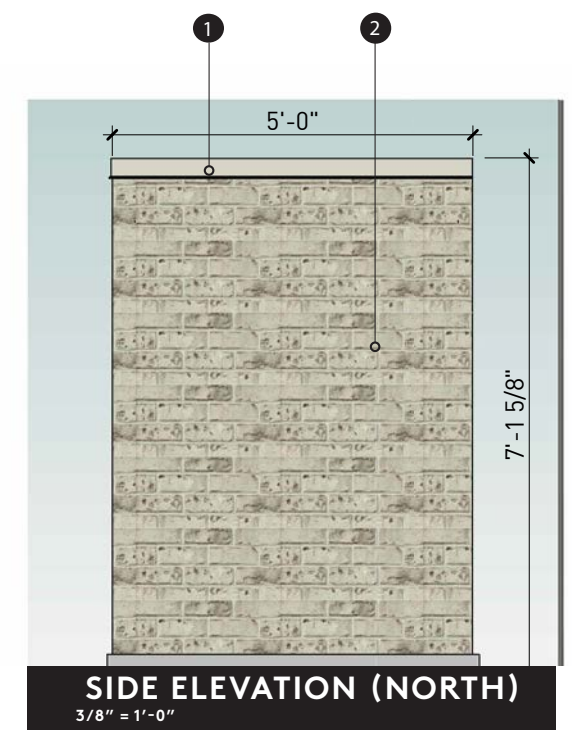
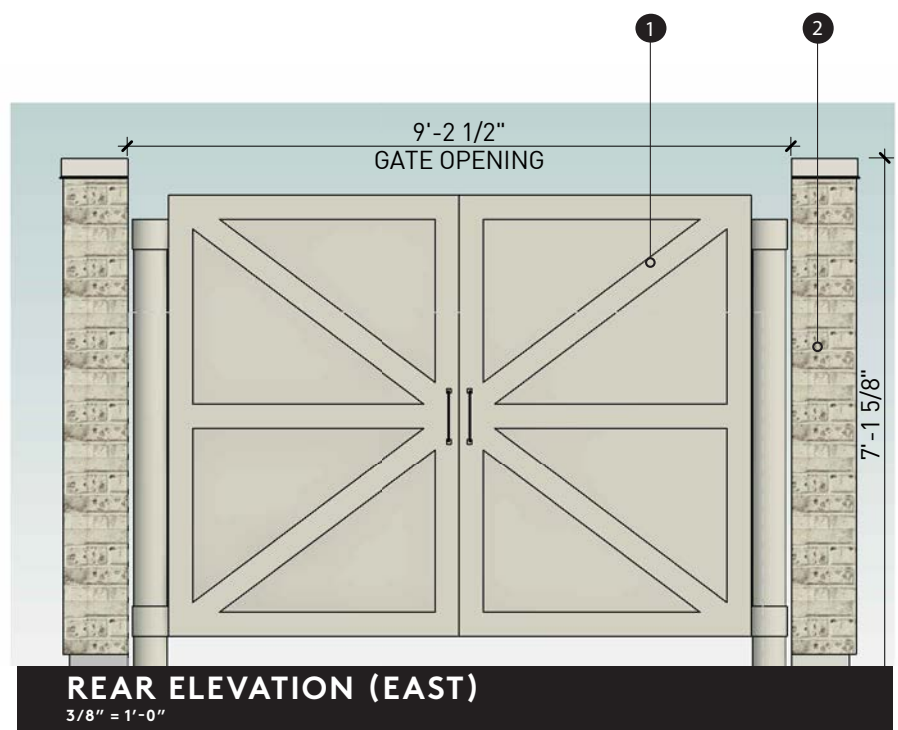
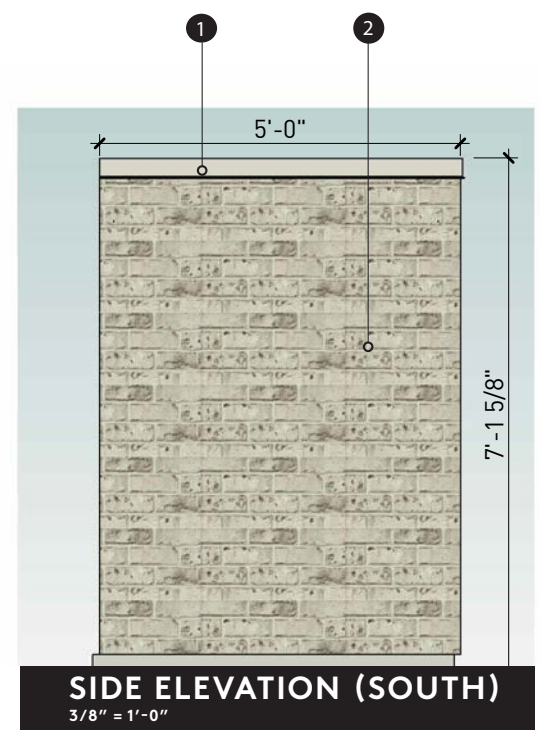
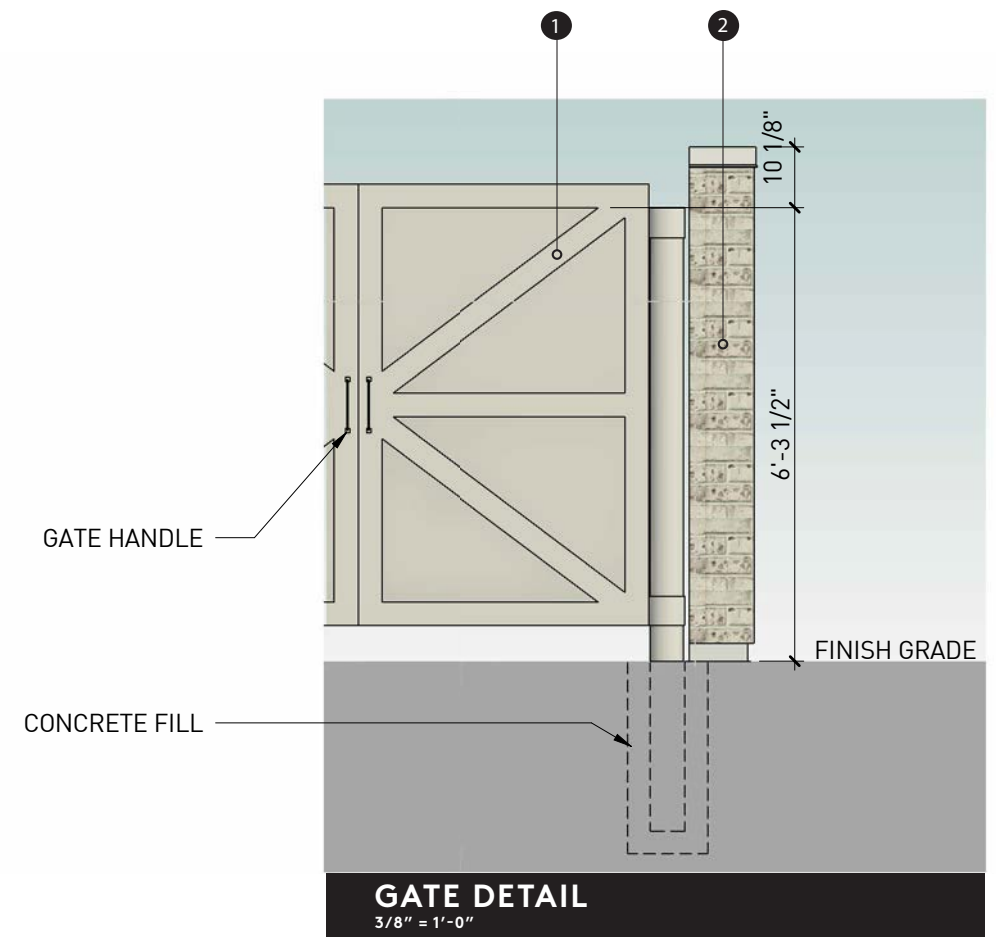
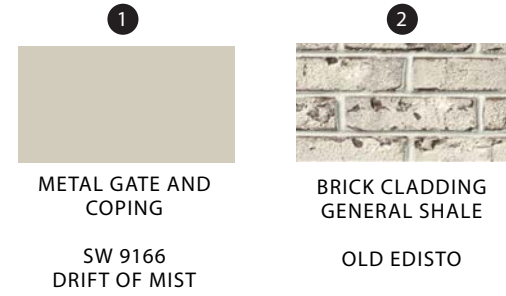
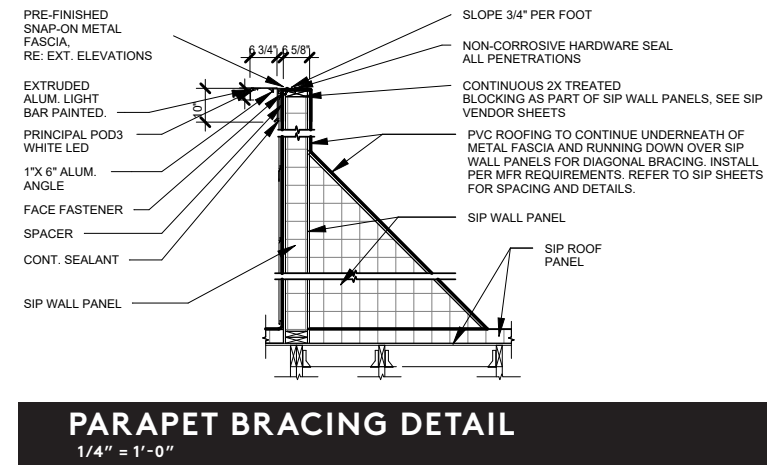
3

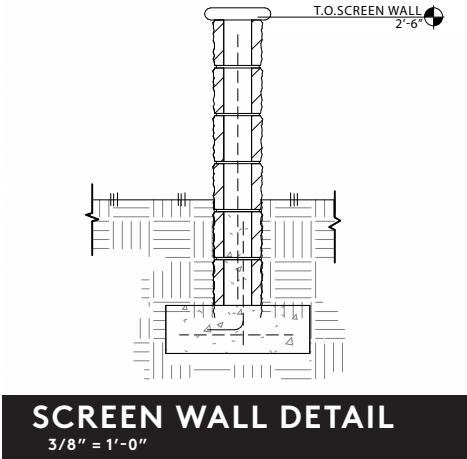
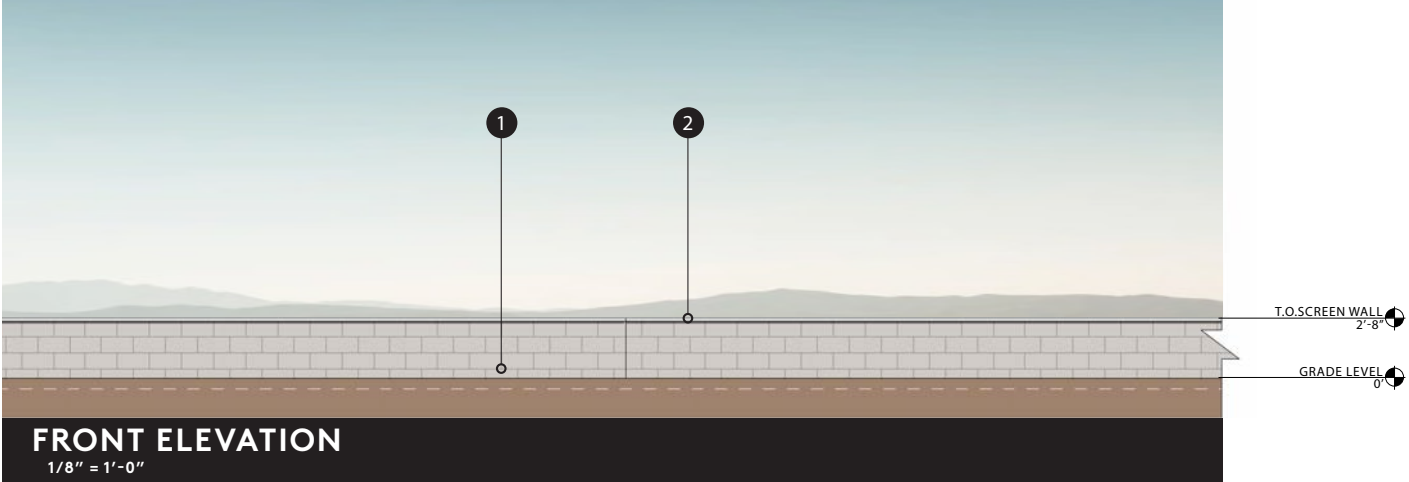
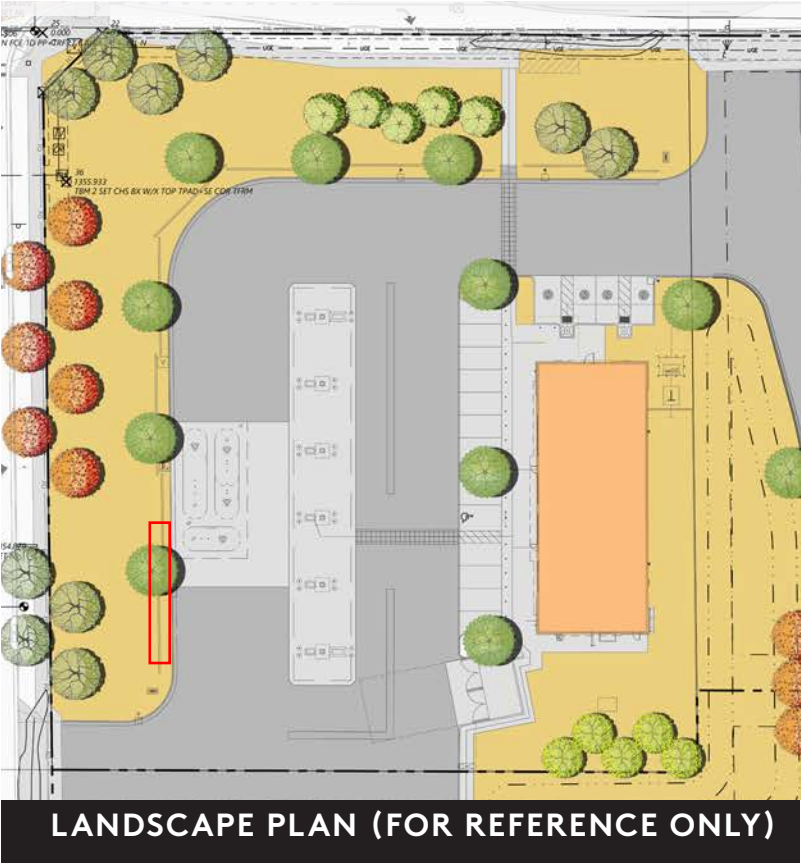


METAL COPING


SW 7004
SNOWBOUND



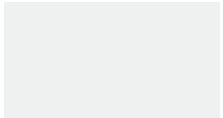




- 1



ECHELON SPLIT-FACE
CMU
- 2



CAPSTONE
- INTEGRALLY COLORED
"PEARL WHITE", NO
PAINT



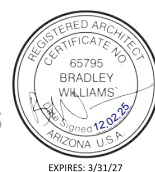


REPRESENTATION ONLY, NOT FOR CONSTRUCTION: ALL IMAGES SHOWN ARE A REPRESENTATION OF THE DESIGN INTENT AND MAY NOT PROTRAY THE EXACT SCALE, COLOR, MATERIALS OR CONSTRUCTION THAT COULD OCCUR DUE TO MATERIAL AVAILABILITY AND FINAL ARCHITECTURAL MODIFICATIONS



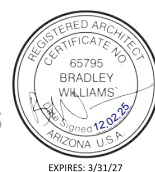


REPRESENTATION ONLY, NOT FOR CONSTRUCTION: ALL IMAGES SHOWN ARE A REPRESENTATION OF THE DESIGN INTENT AND MAY NOT PROTRAY THE EXACT SCALE, COLOR, MATERIALS OR CONSTRUCTION THAT COULD OCCUR DUE TO MATERIAL AVAILABILITY AND FINAL ARCHITECTURAL MODIFICATIONS



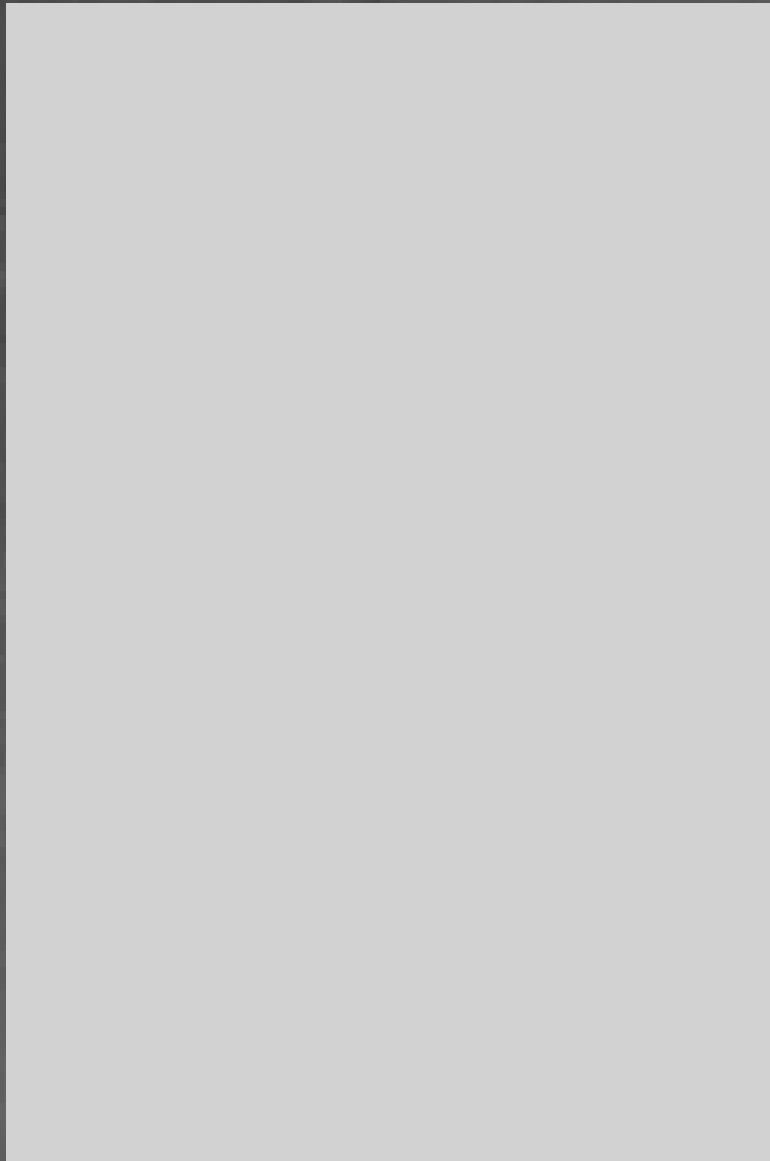


REPRESENTATION ONLY, NOT FOR CONSTRUCTION: ALL IMAGES SHOWN ARE A REPRESENTATION OF THE DESIGN INTENT AND MAY NOT PROTRAY THE EXACT SCALE, COLOR, MATERIALS OR CONSTRUCTION THAT COULD OCCUR DUE TO MATERIAL AVAILABILITY AND FINAL ARCHITECTURAL MODIFICATIONS

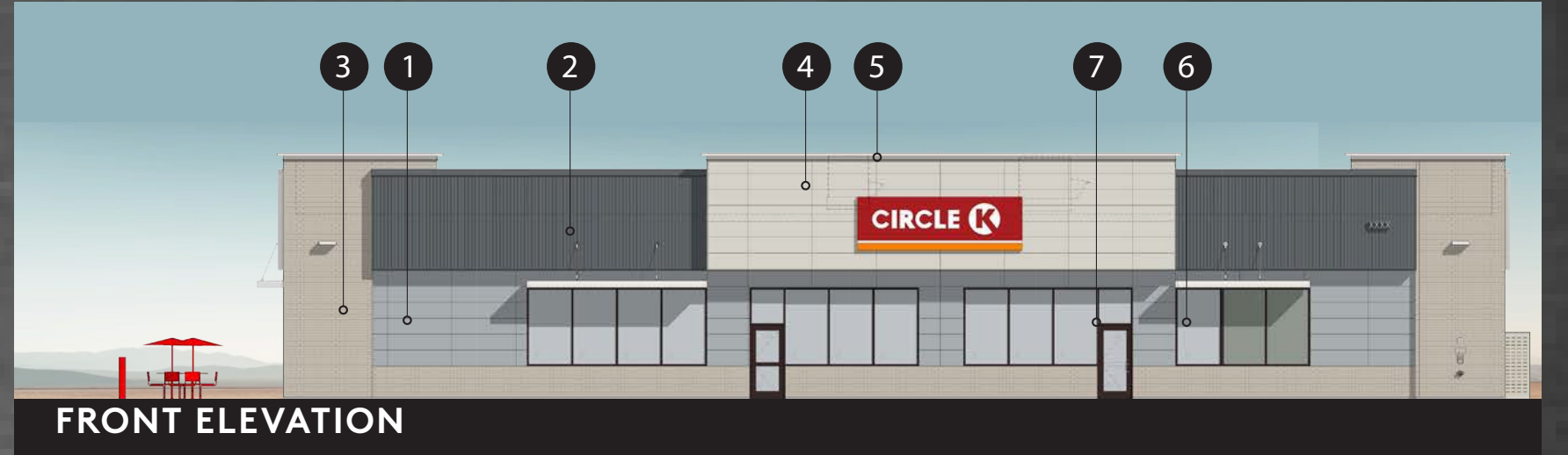




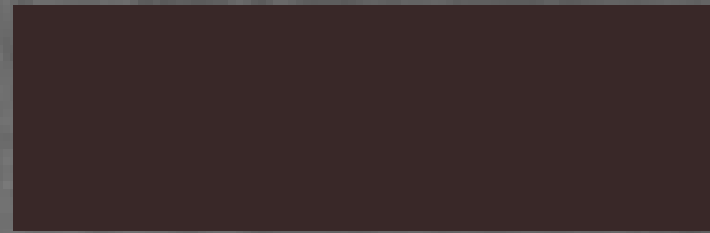
3



6



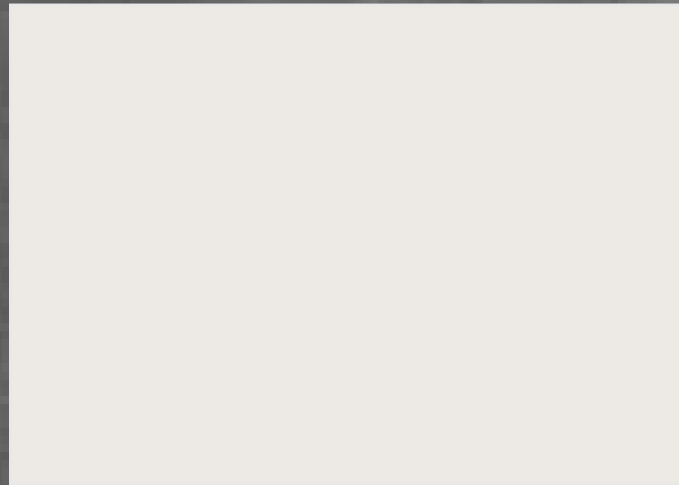
FRONT ELEVATION



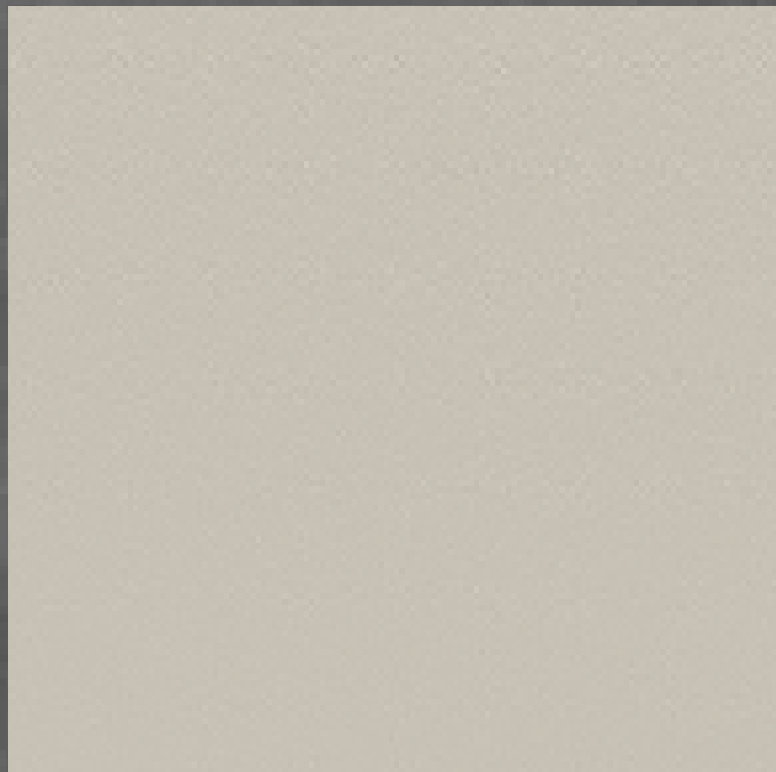
7



9



5



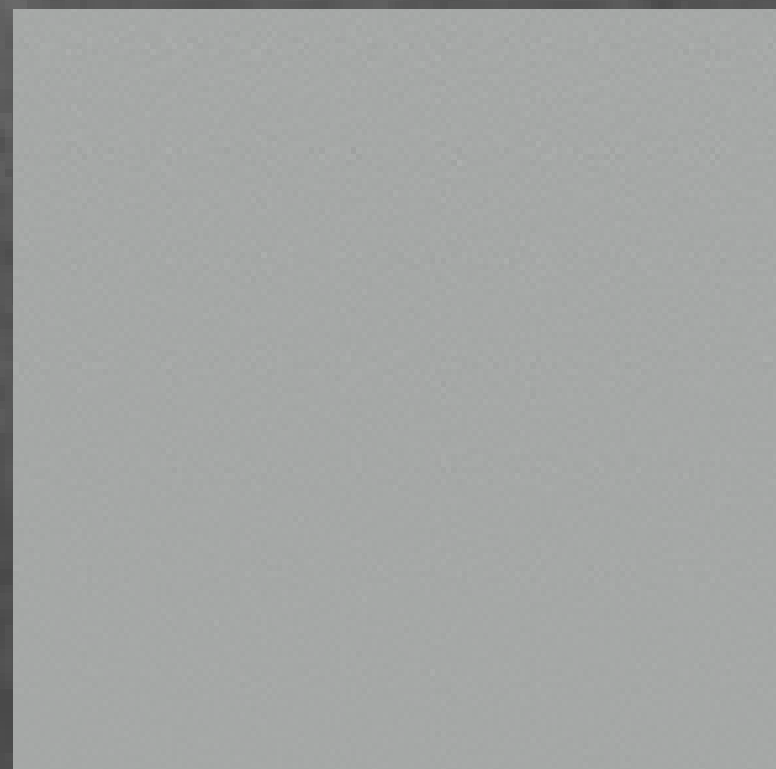
4



2



2



1

rdc.

Architecture | Planning | Interiors

CIRCLE K
PECOS + SOSSAMAN
MESA, ARIZONA (P#24385)

MATERIAL LEGEND

- 1 MANUFACTURER: NICHHA
PRODUCT: TUFF BLOCK
COLOR: SW6255 MORNING FOG
- 2 MANUFACTURER: MCELROY
PRODUCT: RIBBED METAL PANEL
COLOR: CHARCOAL
- 3 MANUFACTURER: GENERAL SHALE
PRODUCT: BRICK CLADDING
COLOR: OLD EDISTO
- 4 MANUFACTURER: NICHHA
PRODUCT: TUFF BLOCK
COLOR: SW9166 DRIFT OF MIST
- 5 METAL COPING/FASCIA
COLOR: SW7004 SNOWBOUND
- 6 INSULATED GLASS
- 7 ANODIZED WINDOW FRAMING
DARK BRONZE
- 9 METAL COPING
COLOR: SW7075 WEB GRAY