

PRELIMINARY GRADING AND DRAINAGE PLAN

EDGED DATA CENTER

8811 E WARNER ROAD

MESA, ARIZONA
SEC SCANNEL 202 & WARNER ROAD
A PORTION OF SECTION 21, TOWNSHIP 1 SOUTH, RANGE 7 EAST
OF THE GILA AND SALT RIVER MERIDIAN, MARICOPA COUNTY, ARIZONA

BENCHMARK

BENCHMARK IS A FOUND P.K. NAIL W/ TAG AT THE NORTHWEST CORNER OF HAWES ROAD & ELLIOT ROAD ON THE SOUTH SIDE OF A HEADWALL.
CITY OF MESA BENCHMARK
ELEVATION: 1377.52'
DATUM: NAVD88

BASIS OF BEARING

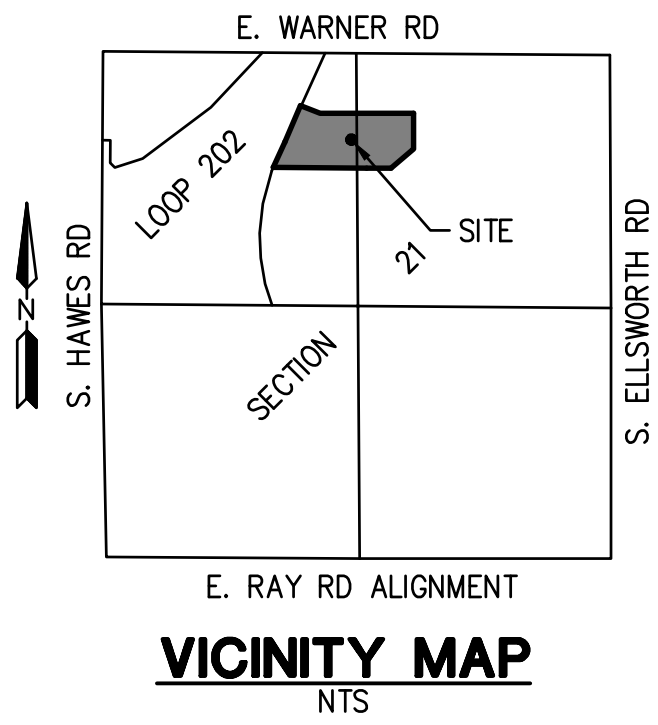
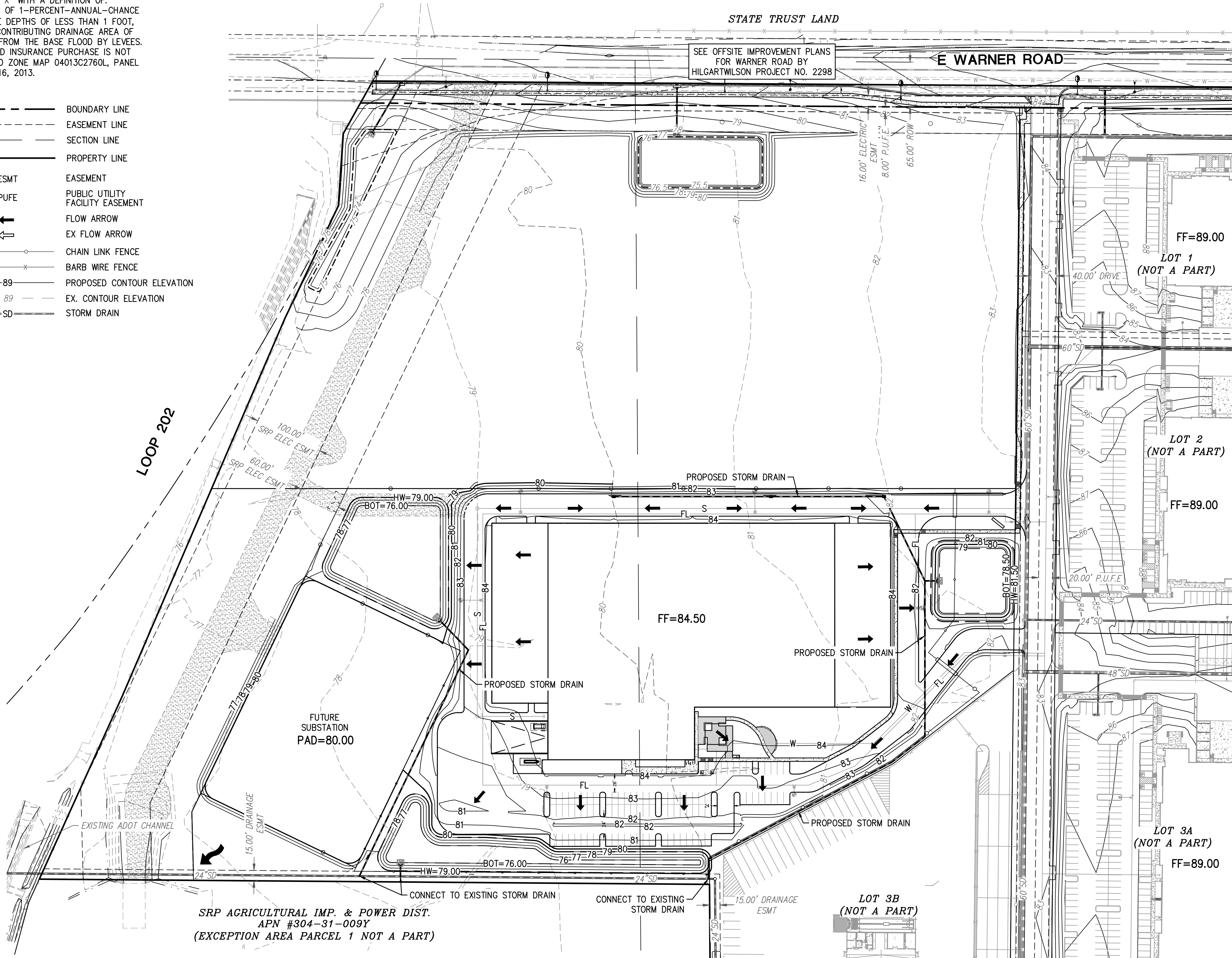
BASIS OF BEARING IS S89°33'10"E ALONG THE EAST-WEST MID-SECTION LINE OF SECTION 21, TOWNSHIP 1 SOUTH, RANGE 7 EAST OF THE GILA AND SALT RIVER MERIDIAN, MARICOPA COUNTY, ARIZONA.

FLOOD PLAIN DESIGNATION

THE SUBJECT PROPERTY LIES WITHIN SHADED ZONE "X" WITH A DEFINITION OF: 0.2-PERCENT-ANNUAL-CHANCE FLOODPLAIN, AREAS OF 1-PERCENT-ANNUAL-CHANCE (BASE FLOOD) SHEET FLOW FLOODING WITH AVERAGE DEPTHS OF LESS THAN 1 FOOT, AREAS OF BASE FLOOD STREAM FLOODING WITH A CONTRIBUTING DRAINAGE AREA OF LESS THAN 1 SQUARE MILE, OR AREAS PROTECTED FROM THE BASE FLOOD BY LEVEES. NO BFES OR DEPTHS ARE SHOWN IN THIS ZONE, AND INSURANCE PURCHASE IS NOT REQUIRED. DESIGNATION DETERMINED BY FEMA FLOOD ZONE MAP 04013C2760L, PANEL NUMBER 2760 OF 4425, EFFECTIVE DATE OCTOBER 16, 2013.

LEGEND

	UTILITY POLE		BOUNDARY LINE
	GUY ANCHOR		EASEMENT LINE
	ELECTRIC PULL BOX		SECTION LINE
	ELECTRIC CABINET		PROPERTY LINE
	LIGHT POLE		EASEMENT
	TRAFFIC SIGNAL WITH ARM		PUBLIC UTILITY FACILITY EASEMENT
	TRAFFIC SIGNAL		FLOW ARROW
	TRAFFIC SIGNAL PULL BOX		EX FLOW ARROW
	WATER METER		CHAIN LINK FENCE
	GAS MARKER		BARB WIRE FENCE
	SEWER CLEAN OUT		PROPOSED CONTOUR ELEVATION
	SANITARY SEWER MANHOLE		EX. CONTOUR ELEVATION
	WATER BACK FLOW PREVENTER		STORM DRAIN
	FIRE HYDRANT		
	MANHOLE (UNKNOWN TYPE)		
	TELEPHONE PEDESTAL		
	FIBER OPTICS PULL BOX		
	CURB INLET		
	GRATE		
	STORM DRAIN MANHOLE		
	AIR RELEASE VALVE		
	WATER VALVE		
	GAS VALVE		



OWNER/DEVELOPER

EDGED ENERGY
30 OLD KINGS HIGHWAY SOUTH, SUITE #1005
DARIEN, CT 06820
PHONE: (646) 372-6641
CONTACT: KYLE CAWLEY

ARCHITECT

HKS INC
350 N SAINT PAUL ST SUITE #100
DALLAS, TX 75201
PHONE: (214) 234-2214
CONTACT: MARY HART

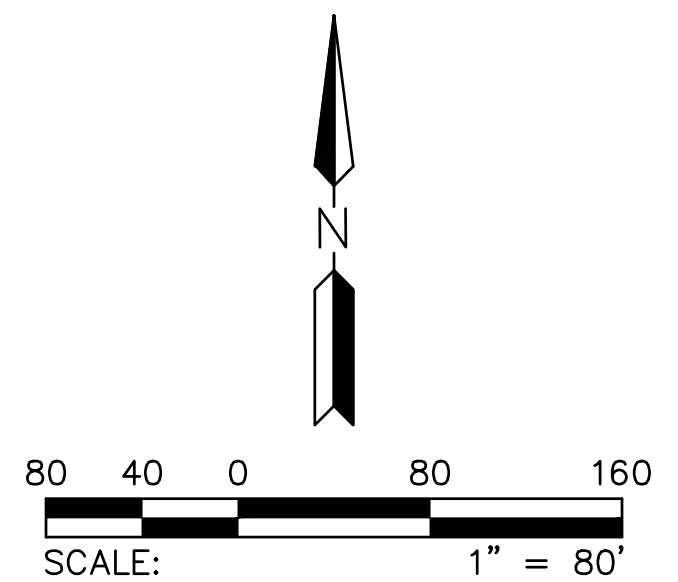
ENGINEER

HILGARTWILSON
2141 E. HIGHLAND AVE SUITE #250
PHOENIX, AZ 85016
PHONE: (602) 490-0535
CONTACT: CASEY WHITEMAN

RETENTION VOLUME

VOLUME PROVIDED= 149,168 CF
VOLUME REQUIRED= 75,732 CF

NOTE: ADOT CHANNEL IS TO BE USED FOR BLEEDOFF



EDGED DATA CENTER

8811 E WARNER ROAD
MESA, ARIZONA

PRELIMINARY GRADING AND DRAINAGE PLAN

PROJ. NO. 2298.02

DATE: SEP 2023

SCALE: 1"=80'

DESIGNED: HC DRAWN: BS APPROVED: CW

REV.

DWG. NO.

PGDP

SHT. 1 OF 1