

**EXTERIOR FINISHES & MATERIALS SCHEDULE**

PAINT	
P-1	BEHR "BLACK"
P-2	BEHR #134-2 "CHIC GRAY"
P-3	BEHR #100-4 "POLAR GRAY"
P-4	BEHR #134-3 "GREIGE"
P-5	BEHR #133-7 "INTELLECTUAL"
P-6	BEHR #114-6 "ANCESTRAL"
MASONRY	
CMU-1	8"x8"x16" SMOOTH FACE CMU STANDARD GRAY
CMU-2	12"x8"x16" SMOOTH FACE CMU STANDARD GRAY
CMU-3	8"x8"x16" SPLIT FACE CMU STANDARD GRAY
CMU-4	12"x8"x16" SPLIT FACE CMU STANDARD GRAY
MORTAR	
M-1	SPEC MIX "SM200 WHITE"
GLASS	
GL-1	1" INSULATED GLAZING UNIT VITRO SOLARBAN 70 (2) CLEAR + CLEAR MULLION FINISH ARCADIA SYSTEMS - BLACK FINISH AB-8
STUCCO	
STUC-1	7/8" STUCCO OVER CMU
STUC-2	7/8" STUCCO OVER METAL STUD FRAMING
METAL	
MTL-1	ALUMINUM COMPOSITE PANEL: REYNOLDBOND COLORWELD 500 "DEEP BLACK"

**EXTERIOR ELEVATION KEYNOTES**

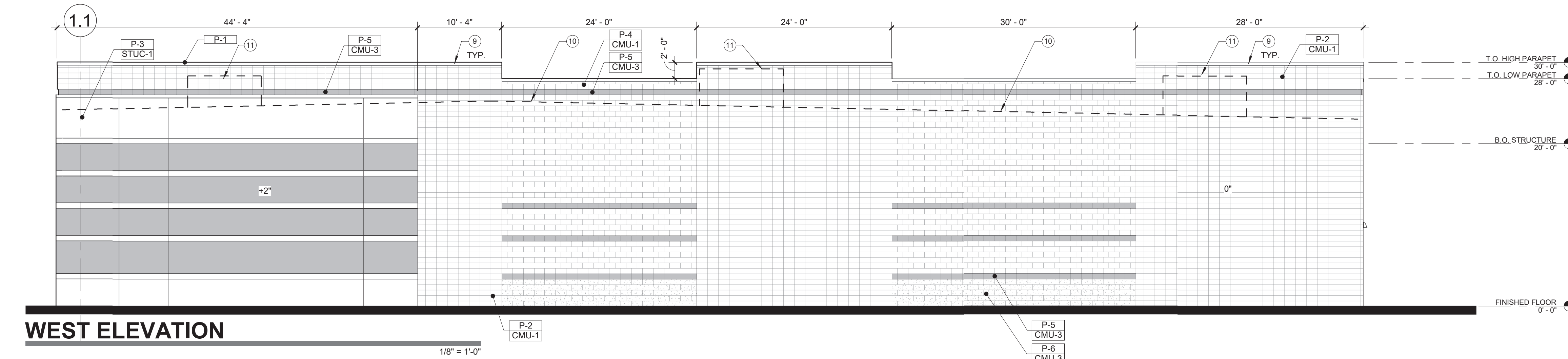
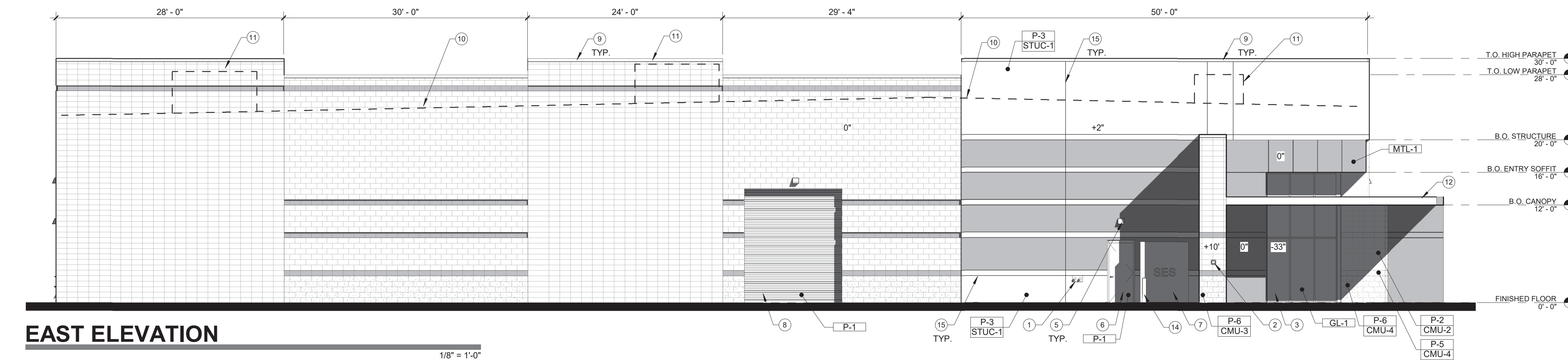
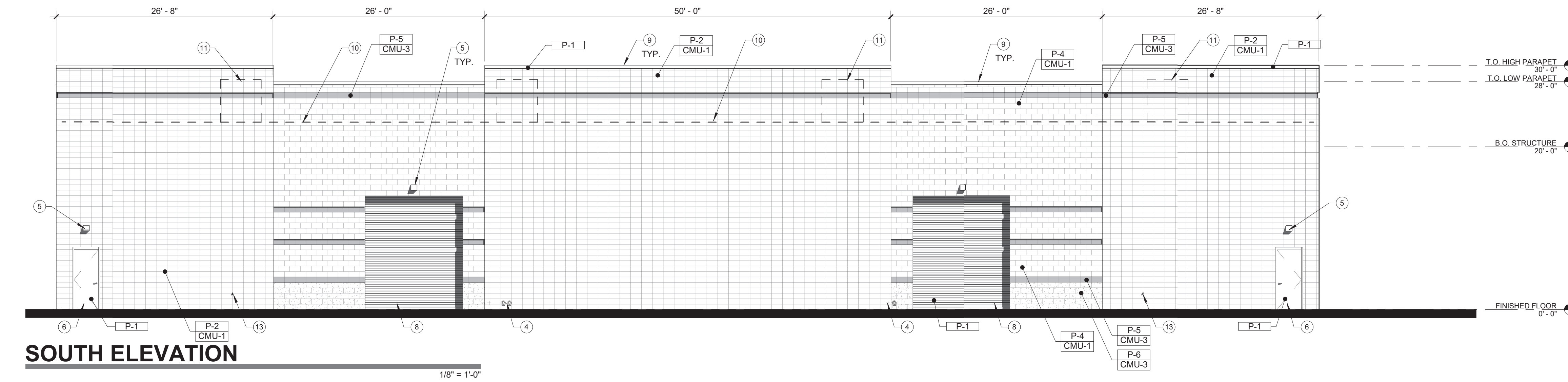
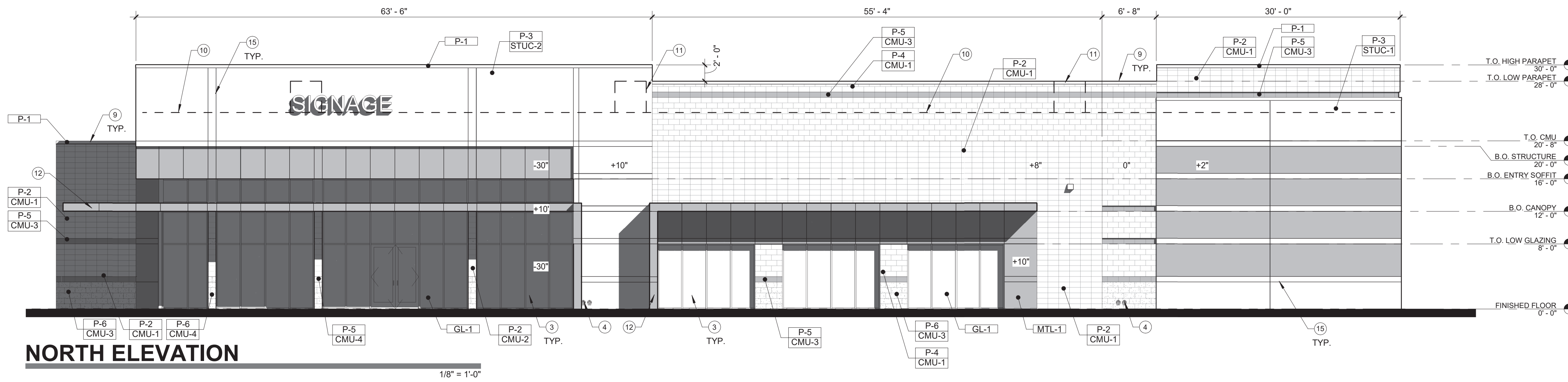
- FIRE RISER / FIRE DEPARTMENT CONNECTION
- KNOX BOX PER CITY OF MESA REQUIREMENTS
- ALUMINUM FRAME WINDOW SYSTEM WITH 1" OFFSET INSULATED GLAZING
- ROOF DRAIN AND OVERFLOW DRAIN LEADERS
- LED WALL PACK
- 3'-0"x7'-0" HOLLOW METAL DOOR
- SERVICE ENTRY SECTION
- 12'-0"x14'-0" OVERHEAD COILING DOOR
- PAINTED METAL PARAPET CAP
- DASHED LINE INDICATES LINE OF ROOF BEYOND
- DASHED LINE INDICATES FULLY SCREENED MECHANICAL UNIT
- ENTRY CANOPY
- HOSE BIBB
- 4" DIAMETER x 6'-0" CONCRETE FILLED PIPE BOLLARD- PAINT SAFETY YELLOW
- 3/8" REVEAL

**ELEVATION MATERIAL PERCENTAGES**

NORTH (FRONT):		EAST (RIGHT):	
RUNNING BOND CMU: CMU-1/P-4		RUNNING BOND CMU: CMU-1/P-4	
RUNNING BOND CMU TOTAL: 518.63 SF	11%	RUNNING BOND CMU TOTAL: 1,077.69 SF	23%
STACK BOND CMU: CMU-1/P-2		STACK BOND CMU: CMU-1/P-2	
STACK BOND TOTAL: 639.74 SF	14%	STACK BOND TOTAL: 1,658.08 SF	35%
SPLIT FACE CMU: CMU-3/P-5	79.33 SF	SPLIT FACE CMU: CMU-3/P-5	173.64 SF
CMU-3/P-6	44.44 SF	CMU-3/P-6	168.75 SF
CMU-4/P-5	10 SF	CMU-4/P-5	342.39 SF
CMU-4/P-6	4 SF	CMU-4/P-6	4 SF
SPLIT FACE CMU TOTAL: 137.77 SF	3%	SPLIT FACE CMU TOTAL: 684.88 SF	15%
MISCELLANEOUS: GLASS	1,009.11 SF	MISCELLANEOUS: GLASS	138.59 SF
METAL	577.93 SF	METAL	167.77 SF
PAINT	74.05 SF	PAINT	259.71 SF
STUCCO	1,559.36 SF	STUCCO	1,040.62 SF
<b>TOTAL:</b>	<b>4,514.27 SF</b>	<b>TOTAL:</b>	<b>4,684.85 SF</b>

**SOUTH (REAR):**

RUNNING BOND CMU: CMU-1/P-4		RUNNING BOND CMU: CMU-1/P-4	
RUNNING BOND CMU TOTAL: 828.28 SF	20%	RUNNING BOND CMU TOTAL: 1,199.84 SF	25%
STACK BOND CMU: CMU-1/P-2		STACK BOND CMU: CMU-1/P-2	
STACK BOND TOTAL: 2,940.80 SF	64%	STACK BOND TOTAL: 1,935.29	42%
SPLIT FACE CMU: CMU-3/P-5	159.24 SF	SPLIT FACE CMU: CMU-3/P-5	198.89 SF
CMU-3/P-6	93.20 SF	CMU-3/P-6	190 SF
SPLIT FACE CMU TOTAL: 252.44 SF	6%	SPLIT FACE CMU TOTAL: 378.89 SF	8%
MISCELLANEOUS: GLASS	0 SF	MISCELLANEOUS: GLASS	0 SF
METAL	0 SF	METAL	0 SF
PAINT	449.55 SF	PAINT	64.28 SF
STUCCO	0 SF	STUCCO	1,138.96 SF
<b>TOTAL:</b>	<b>4,565.49 SF</b>	<b>TOTAL:</b>	<b>4,717.26 SF</b>



**EXTERIOR FINISHES & MATERIALS SCHEDULE**

PAINT	
P-1	BEHR "BLACK"
P-2	BEHR #134-2 "CHIC GRAY"
P-3	BEHR #100-4 "POLAR GRAY"
P-4	BEHR #134-3 "GREIGE"
P-5	BEHR #133-7 "INTELLECTUAL"
P-6	BEHR #114-6 "ANCESTRAL"
MASONRY	
CMU-1	8"x3"x16" SMOOTH FACE CMU STANDARD GRAY
CMU-2	12"x8"x16" SMOOTH FACE CMU STANDARD GRAY
CMU-3	8"x3"x16" SPLIT FACE CMU STANDARD GRAY
CMU-4	12"x8"x16" SPLIT FACE CMU STANDARD GRAY
MORTAR	
M-1	SPEC MIX "SM200 WHITE"
GLASS	
GL-1	1" INSULATED GLAZING UNIT VITRO SOLARBAN 70 (2) CLEAR + CLEAR MULLION FINISH" ARCADIA SYSTEMS - BLACK FINISH AB-8
STUCCO	
STUC-1	7/8" STUCCO OVER CMU
STUC-2	7/8" STUCCO OVER METAL STUD FRAMING
METAL	
MTL-1	ALUMINUM COMPOSITE PANEL: REYNOLBOND COLORWELD 500 "DEEP BLACK"

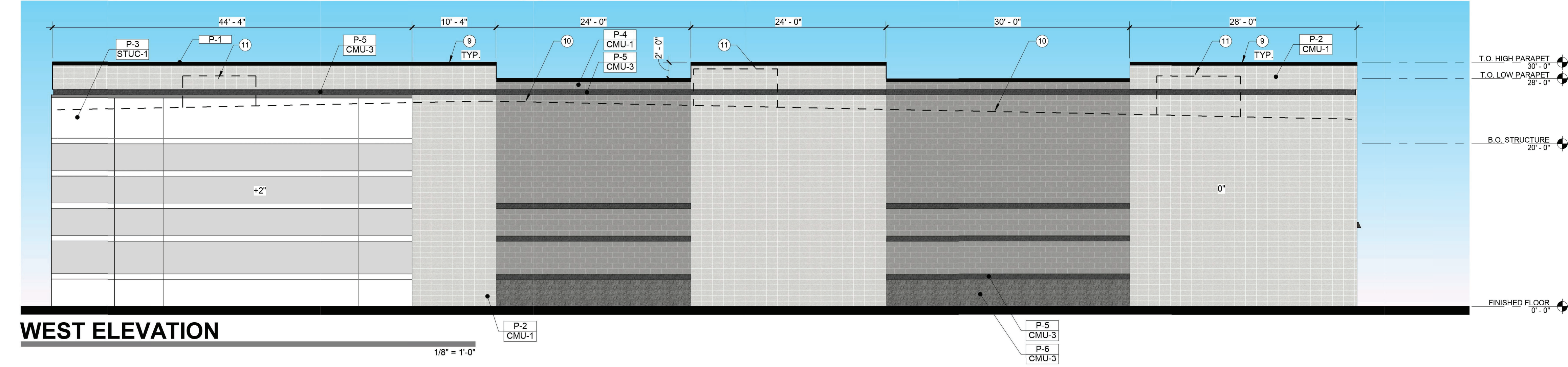
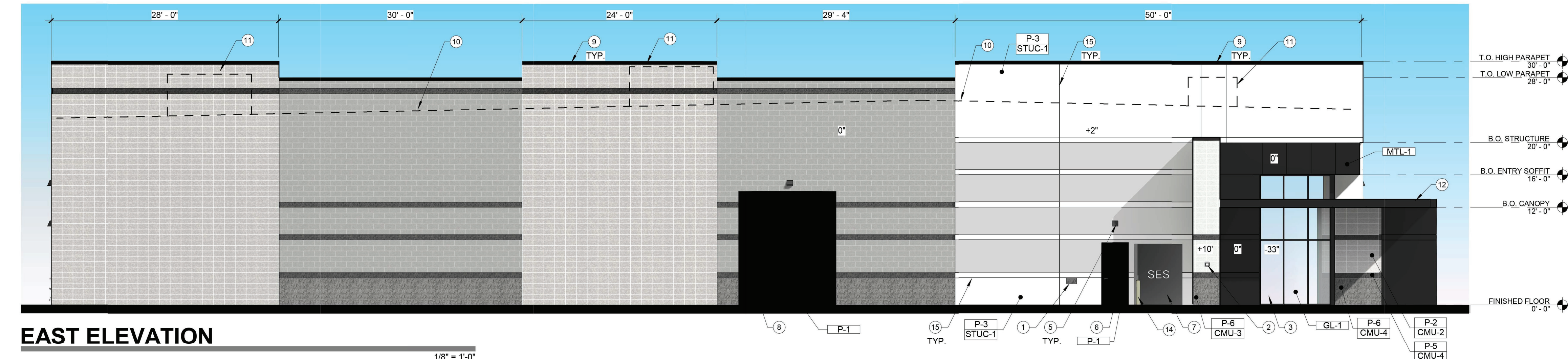
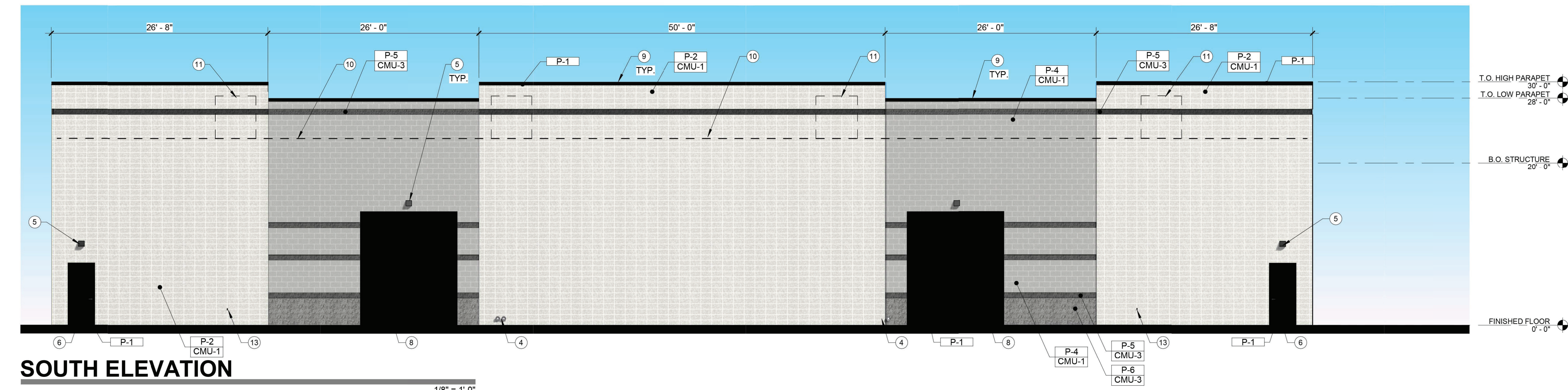
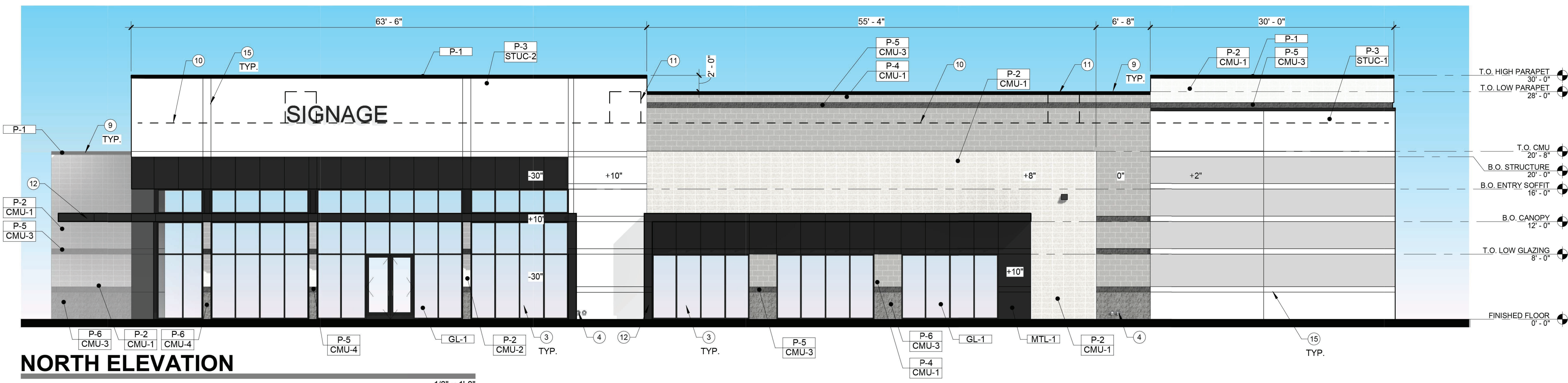
**EXTERIOR ELEVATION KEYNOTES**

- FIRE RISER / FIRE DEPARTMENT CONNECTION
- KNOX BOX PER CITY OF MESA REQUIREMENTS
- ALUMINUM FRAME WINDOW SYSTEM WITH 1" OFFSET INSULATED GLAZING
- ROOF DRAIN AND OVERFLOW DRAIN LEADERS
- LED WALL PACK
- 3'-0"x7'-0" HOLLOW METAL DOOR
- SERVICE ENTRY SECTION
- 12'-0"x14'-0" OVERHEAD COILING DOOR
- PAINTED METAL PARAPET CAP
- DASHED LINE INDICATES LINE OF ROOF BEYOND
- DASHED LINE INDICATES FULLY SCREENED MECHANICAL UNIT
- ENTRY CANOPY
- HOSE BBB
- 4" DIAMETER x 6'-0" CONCRETE FILLED PIPE BOLLARD- PAINT SAFETY YELLOW
- 3/8" REVEAL

**ELEVATION MATERIAL PERCENTAGES**

NORTH (FRONT):		EAST (RIGHT):	
RUNNING BOND CMU:		RUNNING BOND CMU:	
CMU-1/P-4		CMU-1/P-4	
RUNNING BOND CMU TOTAL:	518.63 SF 11%	RUNNING BOND CMU TOTAL:	1,077.69 SF 23%
STACK BOND CMU:		STACK BOND CMU:	
CMU-1/P-2		CMU-1/P-2	
CMU-2/P-2		CMU-2/P-2	
STACK BOND TOTAL:	639.74 SF 14%	STACK BOND TOTAL:	1,658.08 SF 35%
SPLIT FACE CMU:		SPLIT FACE CMU:	
CMU-3/P-5	79.33 SF	CMU-3/P-5	173.64 SF
CMU-3/P-6	44.44 SF	CMU-3/P-6	168.75 SF
CMU-4/P-5	10 SF	CMU-4/P-5	342.39 SF
CMU-4/P-6	4 SF	CMU-4/P-6	4 SF
SPLIT FACE CMU TOTAL:	137.77 SF 3%	SPLIT FACE CMU TOTAL:	342.39 SF 7%
MISCELLANEOUS:		MISCELLANEOUS:	
GLASS	1,009.11 SF 22%	GLASS	138.59 SF 3%
METAL	577.93 SF 12%	METAL	167.77 SF 4%
PAINT	74.05 SF 2%	PAINT	259.71 SF 6%
STUCCO	1,559.36 SF 38%	STUCCO	1,040.62 SF 22%
<b>TOTAL:</b>	<b>4,514.27 SF</b>	<b>TOTAL:</b>	<b>4,684.86 SF</b>

SOUTH (REAR):		WEST (LEFT):	
RUNNING BOND CMU:		RUNNING BOND CMU:	
CMU-1/P-4		CMU-1/P-4	
RUNNING BOND CMU TOTAL:	828.28 SF 20%	RUNNING BOND CMU TOTAL:	1,199.84 SF 25%
STACK BOND CMU:		STACK BOND CMU:	
CMU-1/P-2		CMU-1/P-2	
STACK BOND TOTAL:	2,940.80 SF 64%	STACK BOND TOTAL:	1,935.29 42%
SPLIT FACE CMU:		SPLIT FACE CMU:	
CMU-3/P-5	159.24 SF	CMU-3/P-5	198.89 SF
CMU-3/P-6	93.20 SF	CMU-3/P-6	180 SF
SPLIT FACE CMU TOTAL:	252.44 SF 6%	SPLIT FACE CMU TOTAL:	378.89 SF 8%
MISCELLANEOUS:		MISCELLANEOUS:	
GLASS	0 SF 0%	GLASS	0 SF 0%
METAL	0 SF 0%	METAL	0 SF 0%
PAINT	449.55 SF 10%	PAINT	64.28 SF 1%
STUCCO	0 SF 0%	STUCCO	1,138.96 SF 24%
<b>TOTAL:</b>	<b>4,565.49 SF</b>	<b>TOTAL:</b>	<b>4,717.26 SF</b>





**1** CONCEPTUAL PERSPECTIVE NE



**2** CONCEPTUAL PERSPECTIVE NW