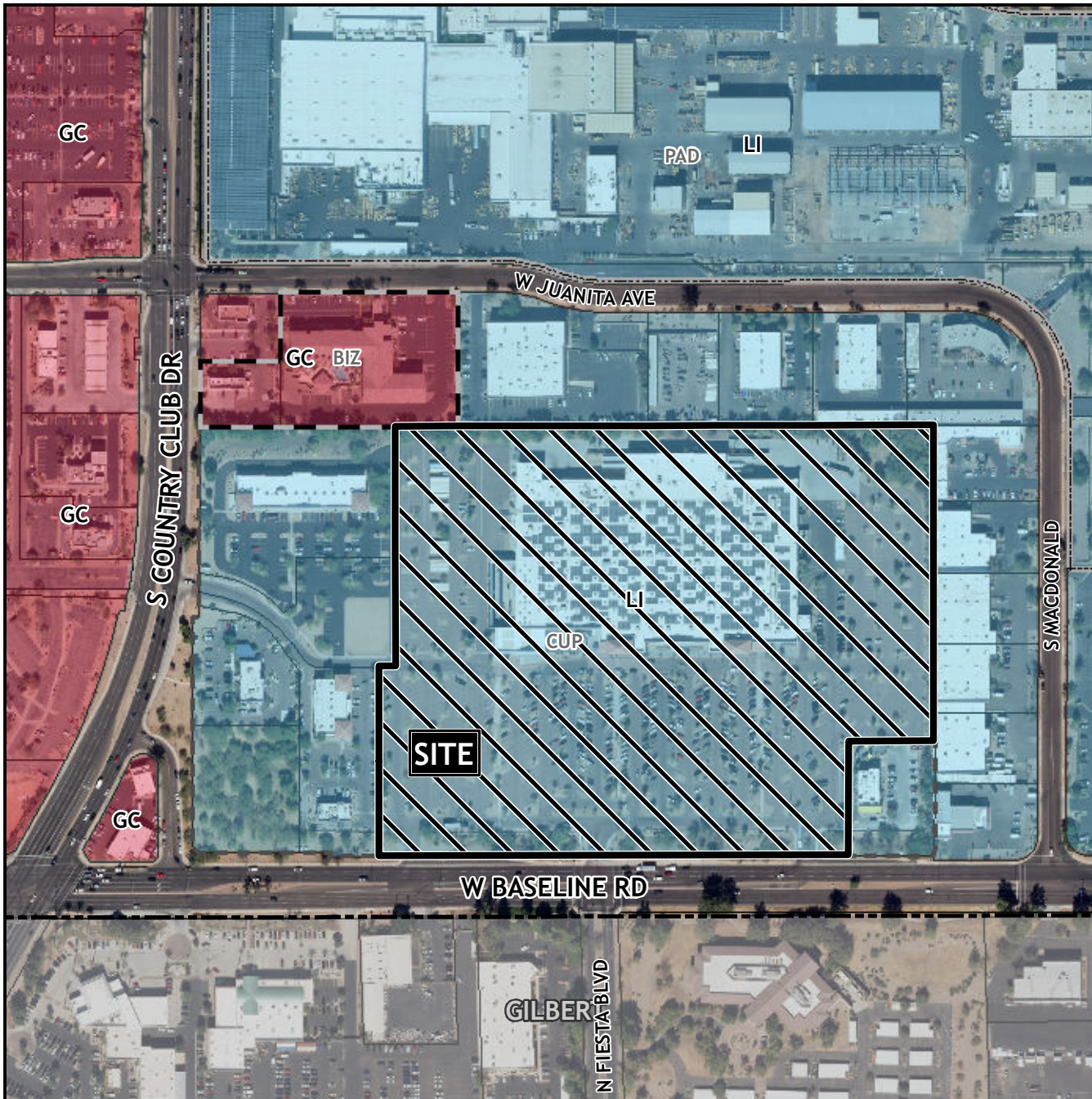


# Planning and Zoning Vicinity Map: ZON24-00274



## Case Details

### CASE:

ZON24-00274

### SITE / ADDRESS:

(District 4). Within the 100 to 400 blocks of West Baseline Road (north side). Located east of Country Club Drive on the north side of Baseline Road. (23± acres).

### REQUEST:

Major Site Plan Modification. This request will allow for a Service Station.

