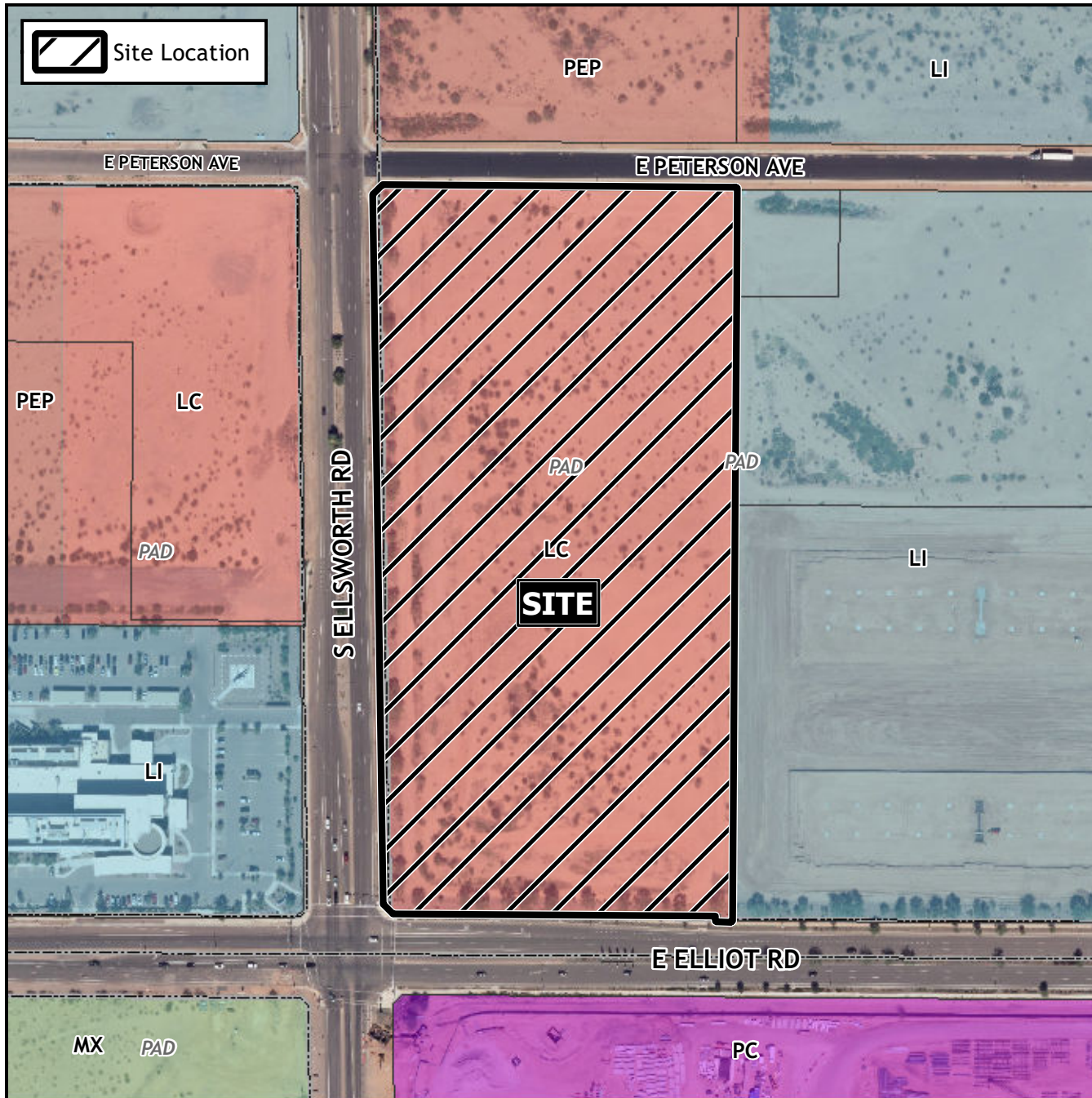


# Final Plat Vicinity Map



# Case Details

### Project:

Elliot Retail  
SUB23-00272

### Site/Address:

(District 6) Within the 3400 to 3600 blocks of South Ellsworth Road (east side), within the 9200 to 9400 blocks of East Elliot Road (north side) and within the 9200 to 9400 blocks of East Peterson Avenue (south side). Located north of Elliot Road and east of Ellsworth Road. (17± acres).

### Description:

El Coyote LLC, Developer;  
Robert A. Johnston, EPS Group, Inc.,  
Surveyor

