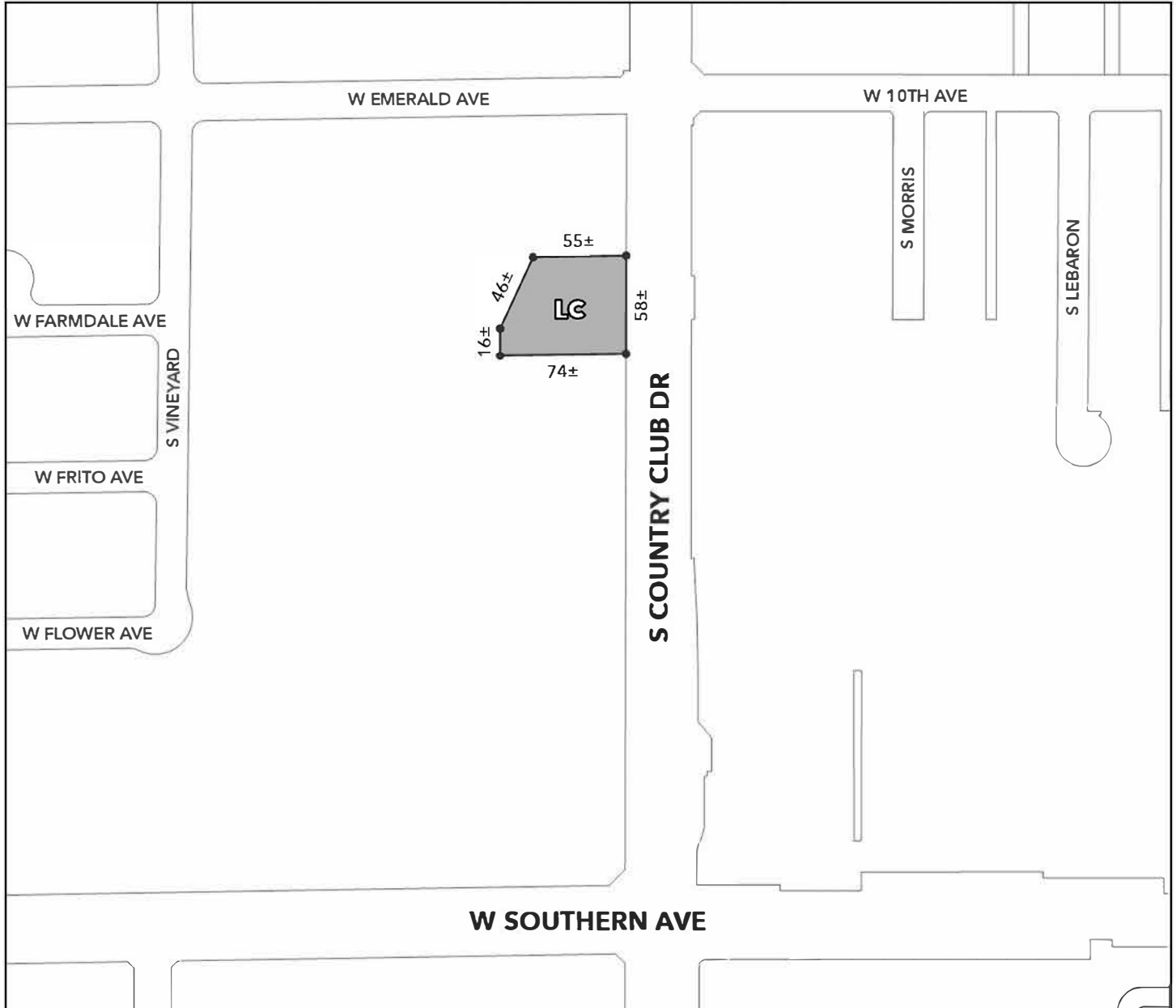




# OFFICIAL SUPPLEMENTARY ZONING MAP AMENDING THE CITY OF MESA ZONING MAP



CASE: ZON24-00745  
 ACREAGE: 0.7±  
 REQUEST: Major Site Plan Modification for the development of a limited-service restaurant with a drive-thru facility.

ORDINANCE: 5913

Please be advised that the attached zoning changes were approved by the Mesa City Council on January 13, 2025 by Ordinance #5913. If you have any questions concerning these changes, contact the City of Mesa Planning Division at 480-644-2385.

\_\_\_\_\_ ATTEST: \_\_\_\_\_ DATE: \_\_\_\_\_  
 MAYOR CITY CLERK