



Design Review Board



DRB25-00325

Circle K Pecos & Sossaman



Request

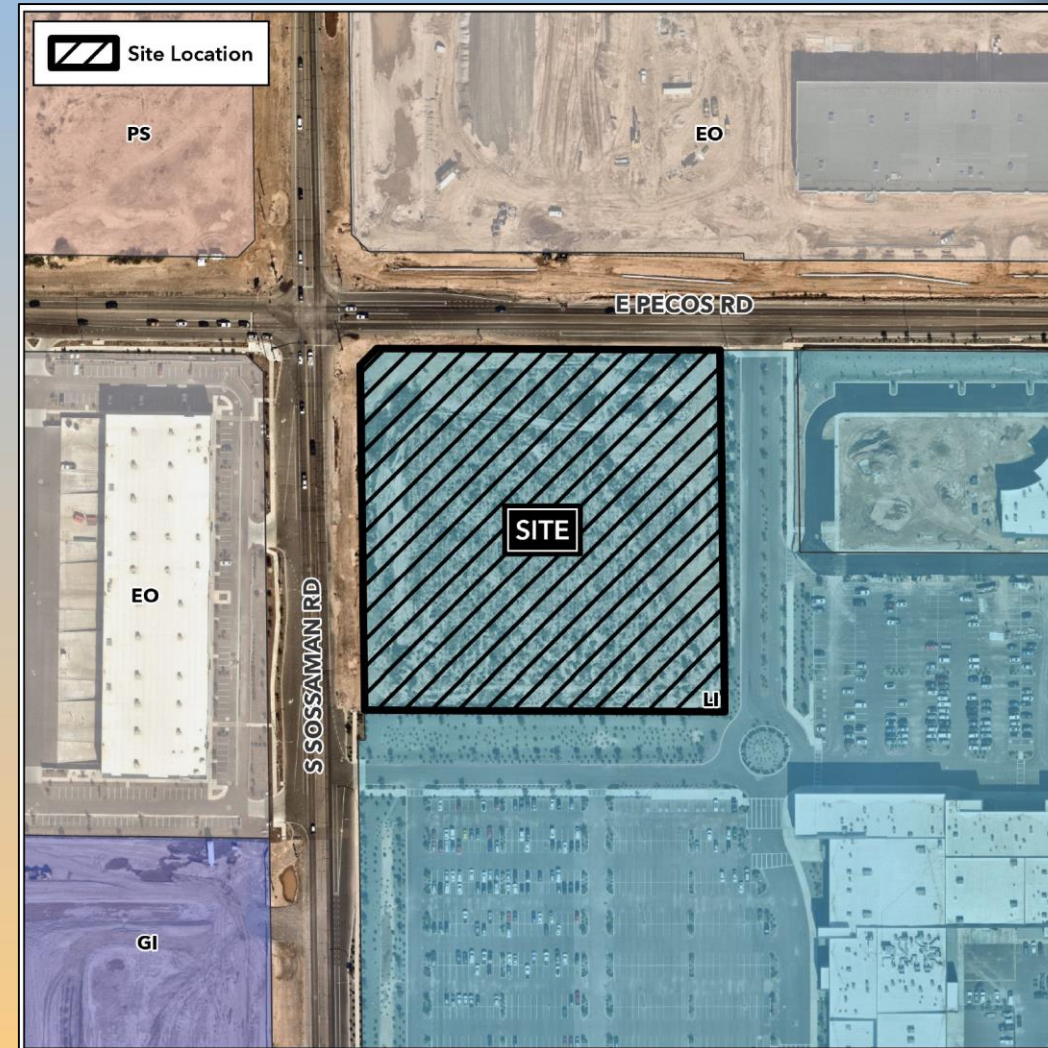
- Design Review
- To allow for a Service Station





Location

- South side of Pecos Road
- East side of Sossaman Road





Site Photo

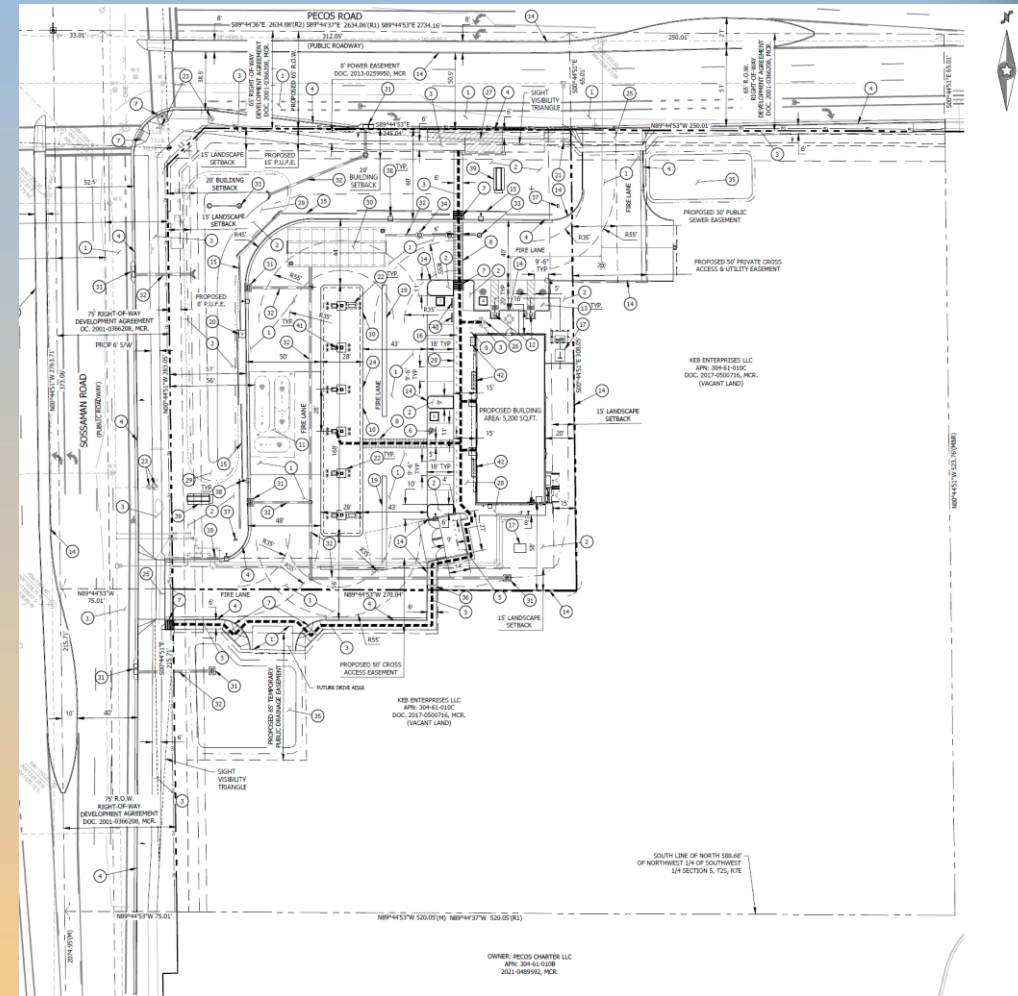


Looking south from Pecos
Road



Site Plan

- Shared access will be provided from Pecos Road and Sossaman Road
- 3,936 sqft 12 pump gas canopy
- 5,200 sqft c-store
- 4 EV charging spaces on the north side





MASTER PLANT LIST

TREES	SIZE / COMMENTS / QTY
EVERGREEN ELM <i>ULMUS PARVIFOLIA 'DRAKE'</i>	36" BOX x 11 QTY / LOW-BREAKING / MATCHED
FRUITLESS OLIVE <i>OLEA EUROPAEA 'WILSONII'</i>	36" BOX x 13 QTY / STANDARD / MATCHED
RED PUSH PISTACHE <i>PISTACHIA RED PUSH</i>	24" BOX x 13 QTY / STANDARD / MATCHED
THORNLESS CASCALOTE <i>CAESALPINIA CACALOTA 'SMOOTHEE'</i>	24" BOX x 13 QTY / LOW-BREAKING / MATCHED
HYBRID DESERT WILLOW <i>CHLOPSIS LINEARIS 'BUBBA'</i>	24" BOX x 9 QTY / LOW-BREAKING / MATCHED
SHRUBS	
RED YUCCA <i>HESPERALOE PARVIFLORA</i>	5 GAL / 188 QTY
DWARF OLEANDER <i>NERIUM OLEANDER 'PETITE PINK'</i>	5 GAL / 93 QTY
WINTER BLAZE EMU <i>EREMOPHILA CARNOSA</i>	5 GAL / 99 QTY
CHEPAROSA <i>JURISTICA CALIFORNICA</i>	5 GAL / 57 QTY
HOPSEED <i>DODONAEA VISCOSA</i>	5 GAL / 27 QTY
GROUNDCOVERS	
TURPENTINE <i>ERICAMERIA LARCIFOLIA</i>	1 GAL / 92 QTY
NASHVILLE GRASS <i>MUHLENBERGIA RIGIDA</i>	1 GAL / 71 QTY
TRAILING YELLOW LANTANA <i>LANTANA NEW GOLD</i>	1 GAL @ 3.5" O.C.
OUTBACK SUNRISE EMU <i>EREMOPHILA GLABRA</i>	159 QTY
TRAILING ACACIA <i>ACACIA REDOLENS</i>	1 GAL @ 5" O.C. 152 QTY
INERT MATERIAL	
DECOMPOSED GRANITE	12" SCREENED,
ROCK PROS - FROST	2" DEPTH, TYP.

PLANTING PLAN

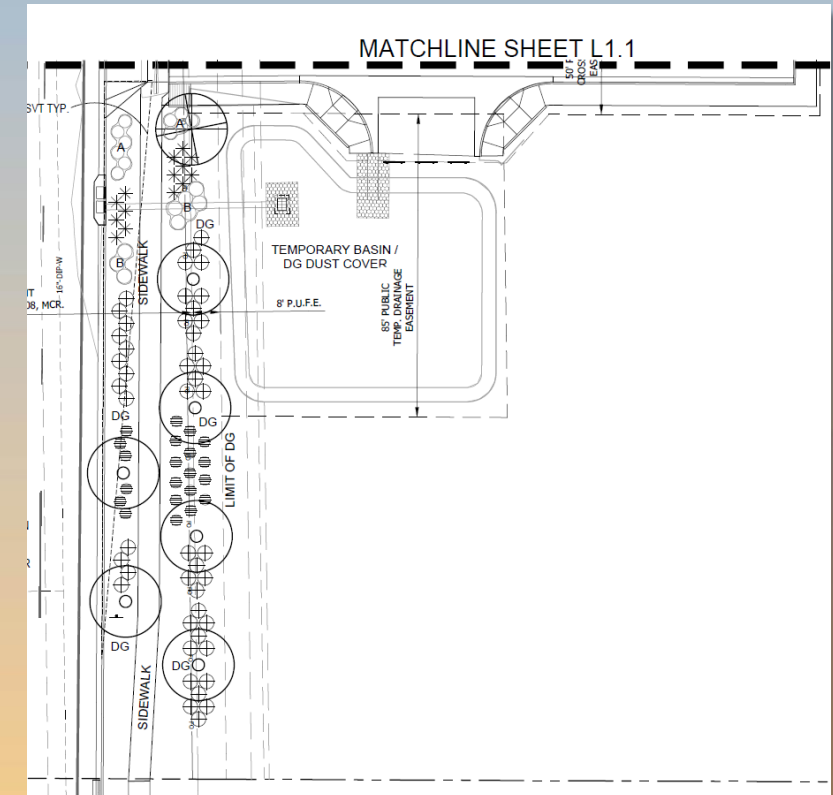
SCALE 1"=20'-0"

Ref. North

0 10 20 40

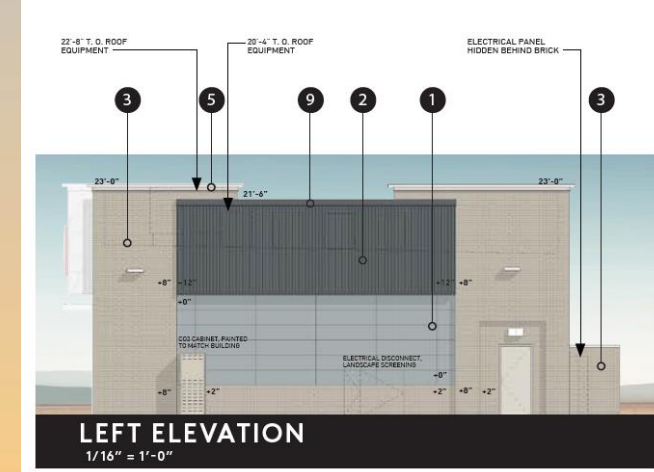
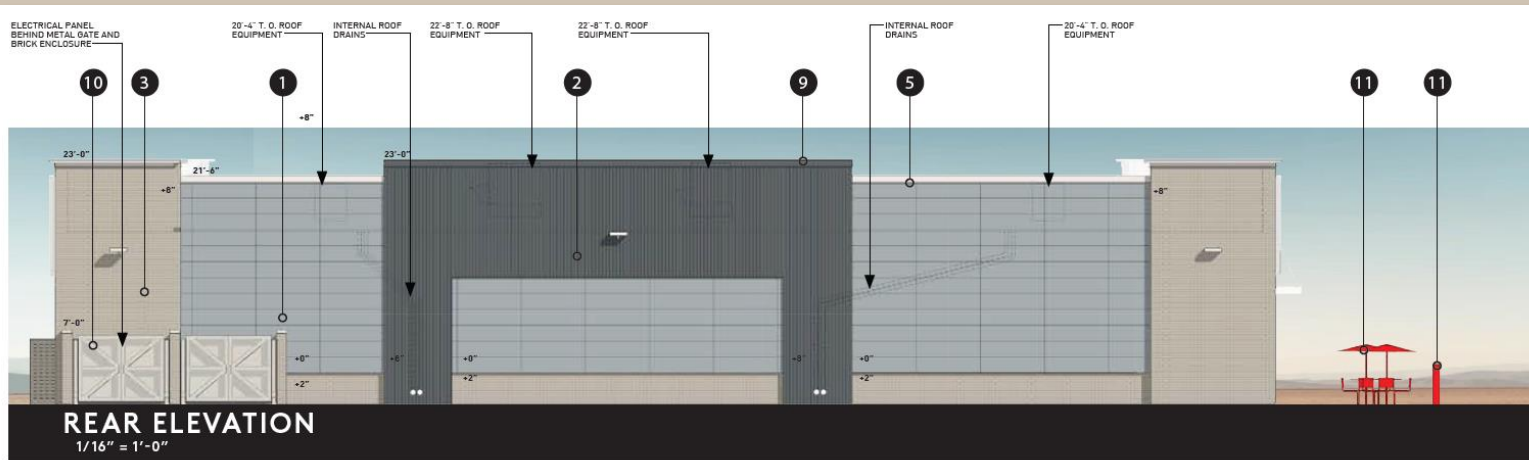
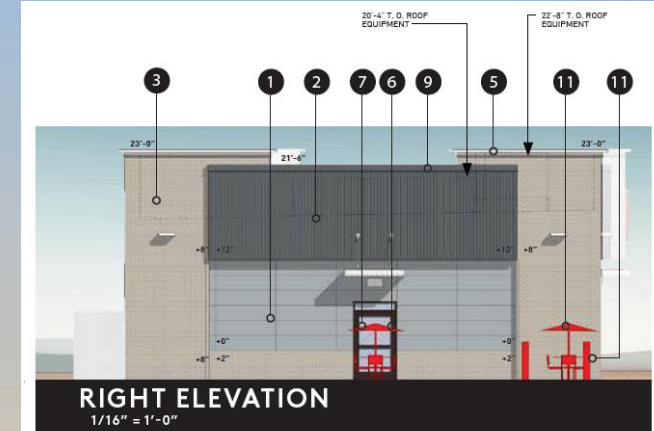
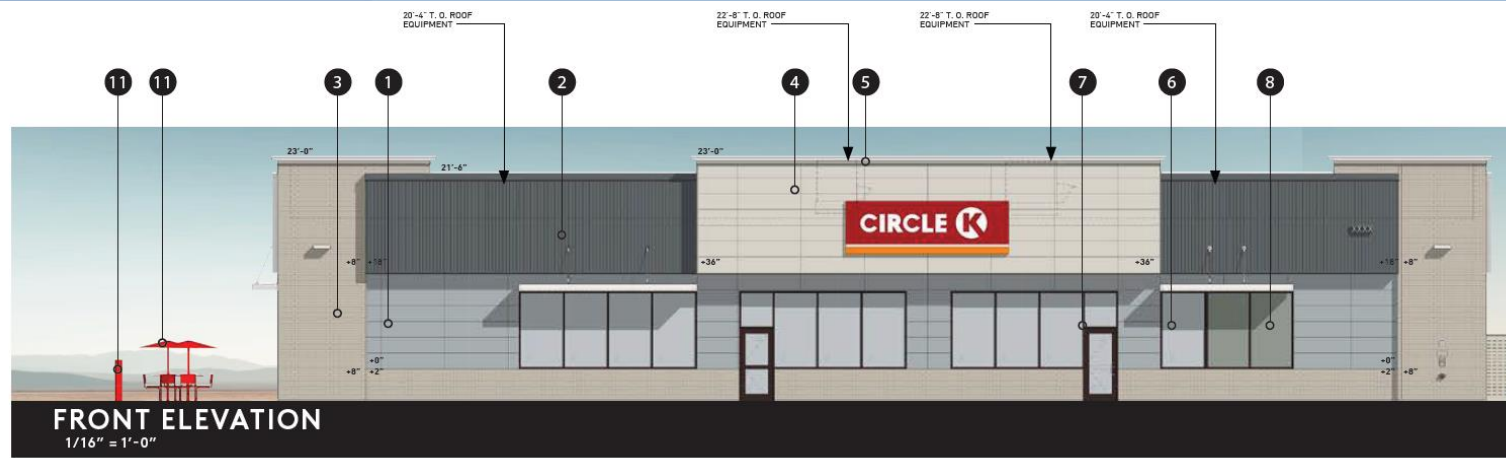
1.00m

MATCHLINE SHEET L.1.2



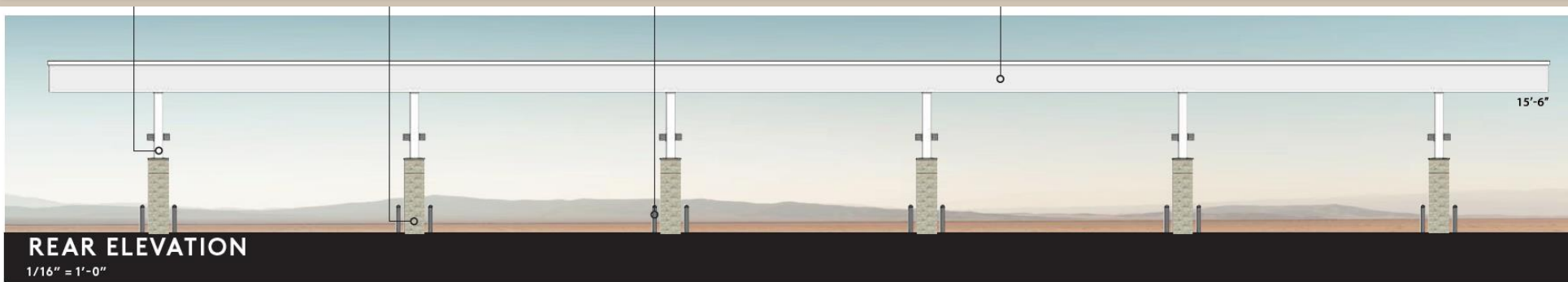
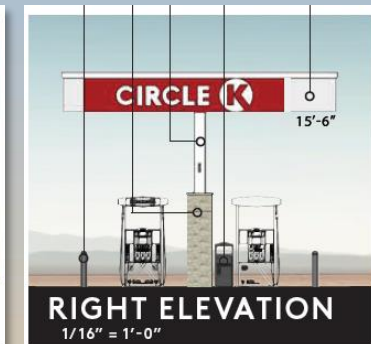
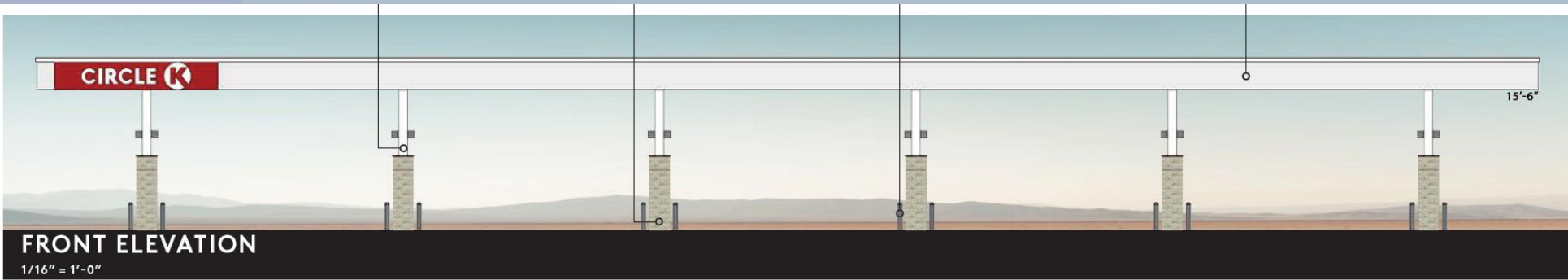


Building Elevations – C-Store





Building Elevations – Gas Canopy





Renderings












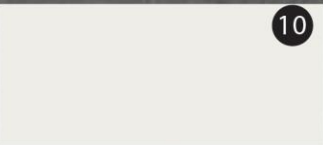


Renderings





Colors and Materials

rdc.
Architecture | Planning | Interiors

**CIRCLE K
PECOS & SOSSAMAN
MESA, AZ**

MATERIAL LEGEND

- ① MANUFACTURER: GENERAL SHALE
PRODUCT: BRICK CLADDING
COLOR: OLD EDISTO
- ② MANUFACTURER: NICHIA
PRODUCT: TUFF BLOCK
COLOR: SW6255 MORNING FOG
- ③ MANUFACTURER: NICHIA
PRODUCT: TUFF BLOCK
COLOR: SW9166 DRIFT OF MIST
- ④ MANUFACTURER: MCELROY
PRODUCT: RIBBED METAL PANEL
COLOR: CHARCOAL
- ⑤ METAL COPING
COLOR: SW7004 SNOWBOUND
- ⑥ METAL COPING / FASCIA
COLOR: SW7075 WEB GRAY
- ⑦ ANODIZED WINDOW FRAMING
DARK BRONZE
- ⑧ INSULATED CLEAR GLASS
- ⑨ SPANDREL GLASS
- ⑩ CEMENTASOUS FENCE
COLOR: SW7004 SNOWBOUND



Alternative Compliance

- ✓ Materials. No more than 50% of the total façade may be covered with one (1) single material.



Findings

Staff is seeking your review and recommendation on the following:

- ✓ Proposed building elevations and landscape plan
- ✓ Proposed alternative compliance

Staff welcomes any feedback



Design Review Board