

Rio East-Dobson Streetcar Extension

Mesa City Council Study Session
Thursday, June 27, 2024



2024 RAISE Grant Award

- \$15.9M
 - Rebuilding American Infrastructure with Sustainability and Equity (RAISE)
 - No local match
 - Funds preliminary engineering and environmental assessment phases



Rail System Map (2025)



Lines

- A** Downtown Phoenix Station
Gilbert Rd/Main St
- B** Metro Parkway
Cesar Chavez Blvd/Central Ave
- S** Marina Heights/Rio Salado
Dorsey/Apache Blvd
- PHX Sky Train**
for Sky Harbor Airport

Stations or Stops

- Station or Stop
- Only one direction of travel for station or stop
- Transfers

N
For Wayfinding Test Only

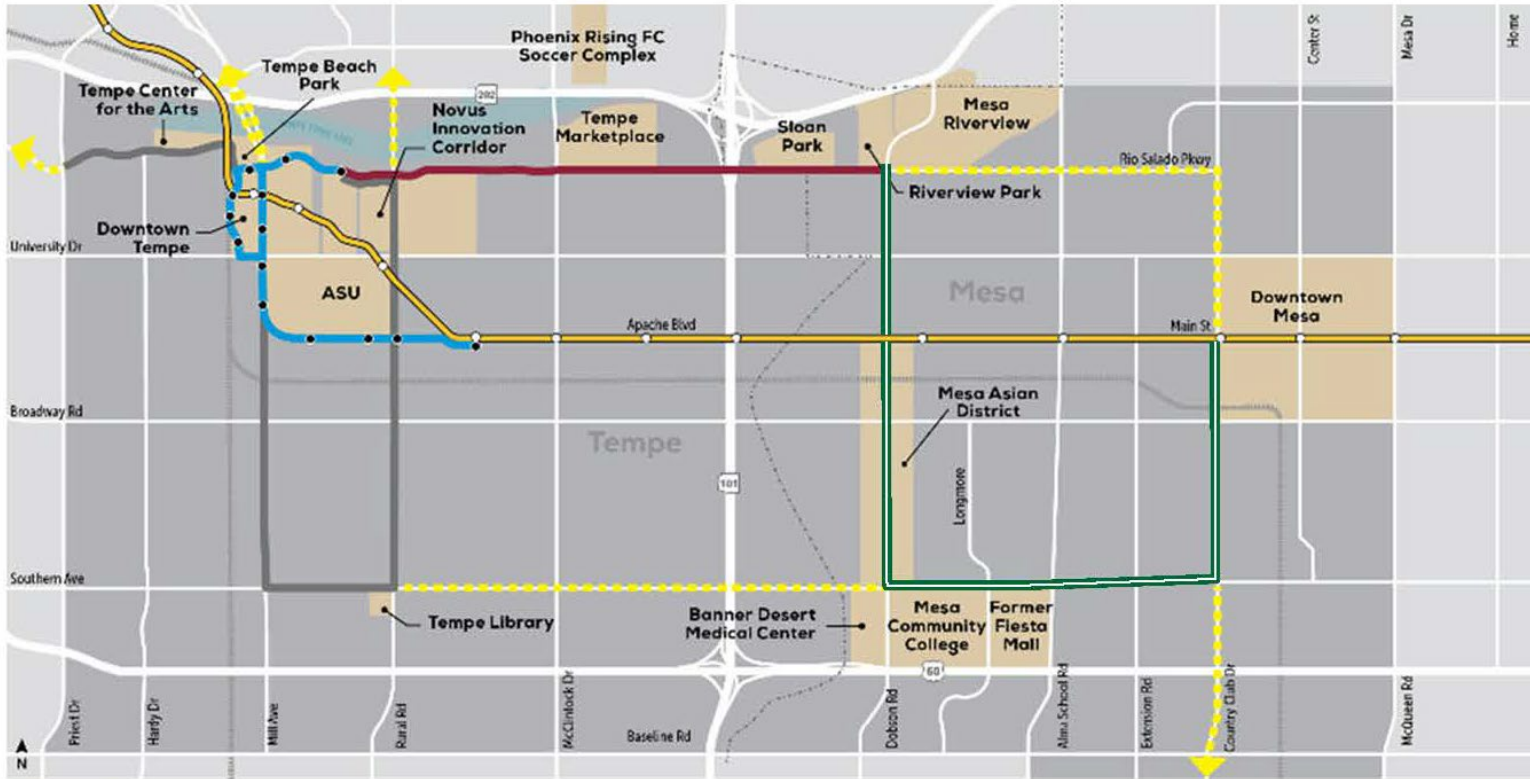


Transit Moves People + Economy

- 34M annual transit trips (Bus & Rail)
 - 120K each day
- 1M annual paratransit trips
- 50+% are work or school-bound
- \$1.5B leveraged in federal grants
- \$17B in neighboring economic development
- 2M+ people moving here by 2050
A balanced transportation plan is critical



Why are we here today?



LEGEND

- Valley Metro Rail/Station
- Rio Salado East Streetcar Option
- Dobson/Southern/Country Club Option¹
- Tempe Streetcar/Stop
- - - Future Connections
- Study Area
- Additional Options from Tempe/Mesa Streetcar Feasibility Study

¹High-capacity transit type for Dobson/Southern/Country Club Option to be selected in future studies.

1. Rio Salado East: Marina Heights to Dobson

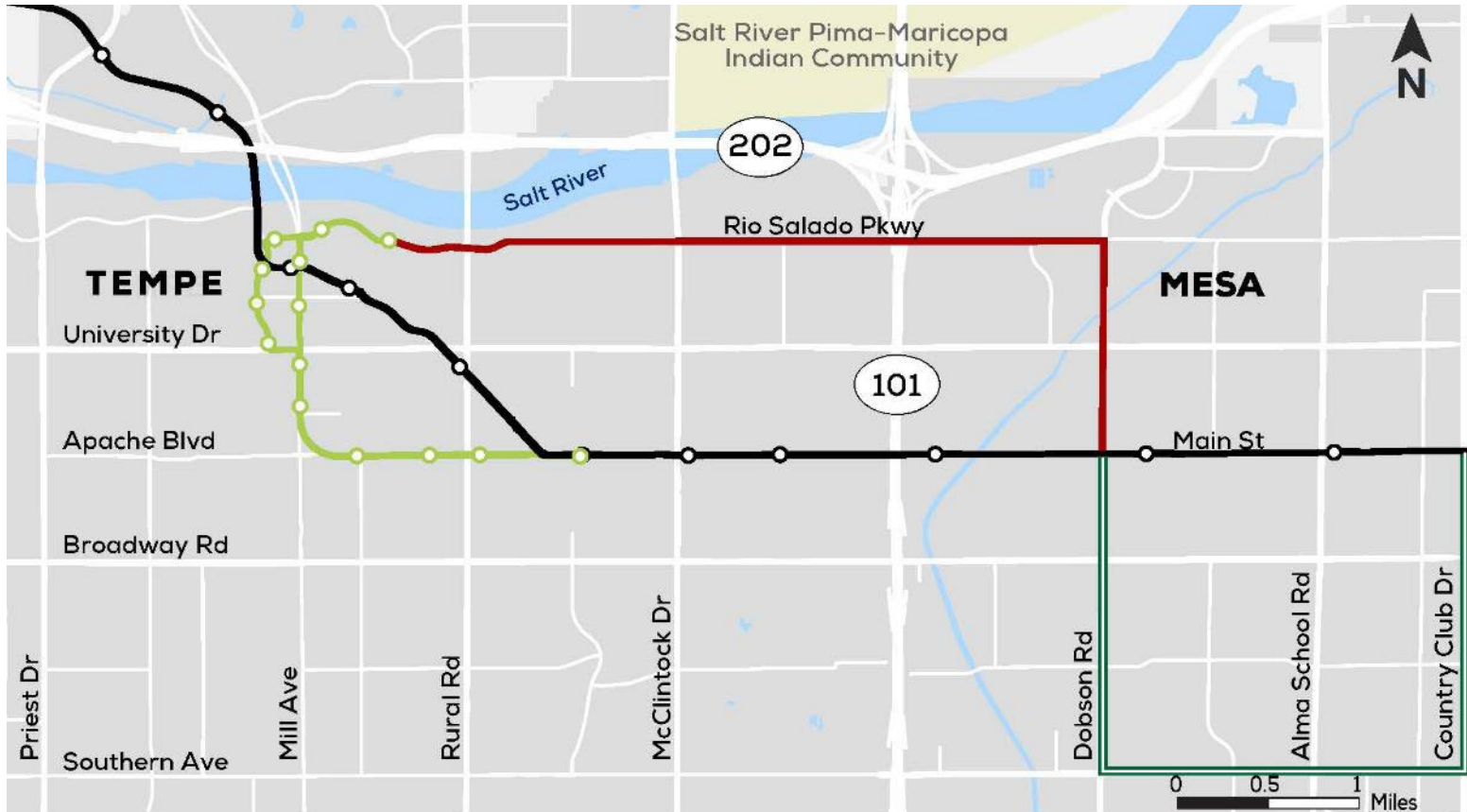
2. Rural: Marina Heights to Southern/Mill

3. Dobson, Southern, Country Club

4. Mill: Apache to Southern/Rural

5. Rio Salado West: Ash to Priest

Resulting Alignment Priorities



LEGEND

- | | |
|---|--|
|  Valley Metro Rail |  Rio East-Dobson Extension (REDE) |
|  Valley Metro Streetcar |  Proposed Fiesta Extension |

- November 2020 presented findings of both studies to Council
- February 2023 approved start of Rio East-Dobson Streetcar Extension Alternatives Analysis

Steps to Prioritize Future Investment



- **Extend Route 48** from Tempe Marketplace to Mesa Riverview on Rio Salado Pkwy
- Enhance service on **Route 30 – University Dr** and **Route 45 – Broadway Rd**
- Implement a uniquely **branded local circulator route** to further develop transit market



- Integrate corridor into the **city of Mesa's General Plan** update to drive transit-supportive development
- Continue coordination with developers to **seek opportunities to integrate streetcar** into developments
- Encourage developers along the corridor to **implement transit-oriented development elements**

Streetcar Overview

- Designed to run on tracks in mixed flow or in dedicated rail corridors
- Operates in urban areas, providing a convenient and efficient mode of transportation for short to medium distances
- Has been a vision in the East Valley for more than a decade before opening in central Tempe on May 20, 2022



Study Purpose



LEGEND

- Valley Metro Rail
- Valley Metro Streetcar

Rio East-Dobson Extension (REDE)



Study Purpose

- Improve **mobility** and **accessibility** by providing a dependable and efficient **high-capacity transit** option that serves employment, activity centers, educational facilities and residential areas in and around
 - Downtown Tempe
 - Marina Heights
 - Arizona State University and the Novus Innovation District
 - Tempe Marketplace
 - Sloan Park
 - Riverview Park
 - Mesa Riverview
 - Asian District
- Extend streetcar system from downtown Tempe into Mesa and add another connection to the light rail system



Study Need

Based on data from the Maricopa Association of Governments (MAG), the study area is predicted by 2050 to have:



55%

Increase in residents



45%

Increase in workers

Based on data from the U.S. Census American Community Survey, the study area currently has:



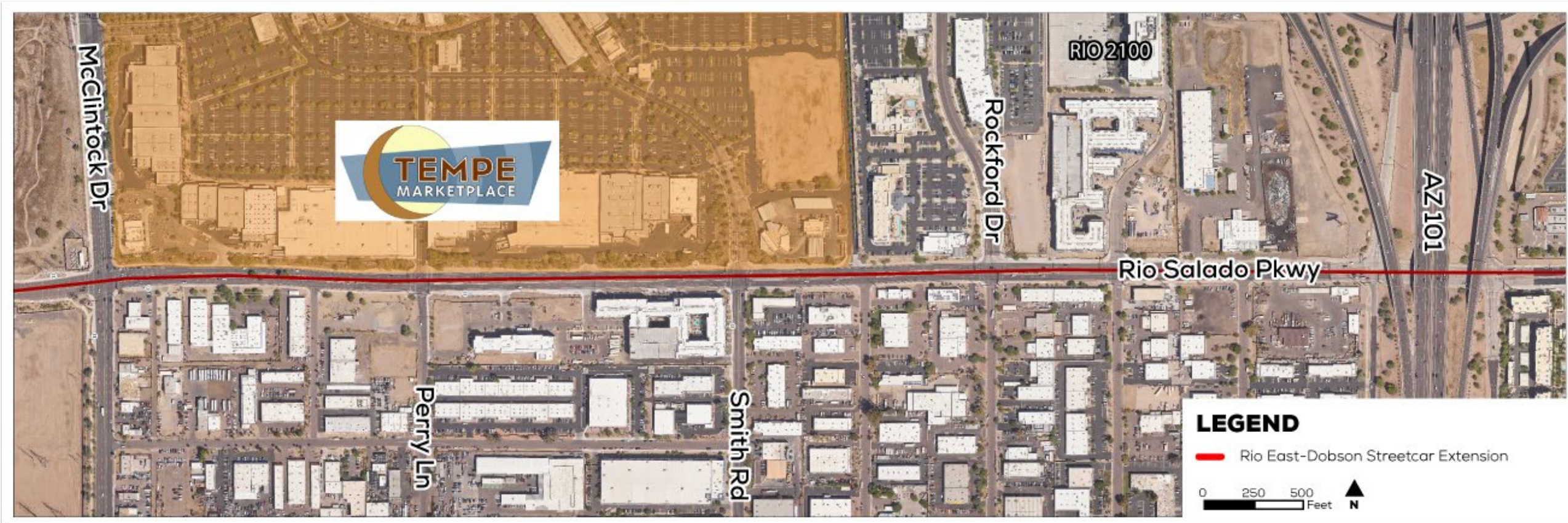
79%

Zero or one-car households

Marina Heights/Rio Salado to McClintock Drive



McClintock Drive to Loop 101



Loop 101 to Dobson Road



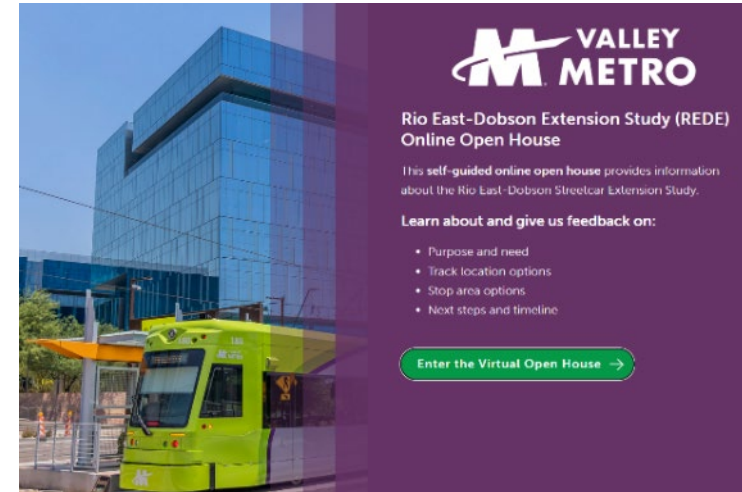
Dobson Road (south to Main Street)



Community Outreach

- **In-person open houses** in Mesa and Tempe
 - June 10 and 12
 - 60 attendees
- **Virtual open house**
 - May 28 through June 28
 - 1,140 visitors; 561 engaged sessions; 206 survey responses as of June 19
- **Meetings** with key stakeholders

Study website: www.valleymetro.org/rede
Virtual open house: www.redestreetcar.com



Next Steps / Timeline

- The timeline for the study is shown below. Community outreach and engagement will continue throughout the study. At the completion of the REDE Study, the team will develop and present a final recommendation to the cities of Mesa and Tempe for consideration and possible adoption in early 2025.



Thank you!
valleymetro.org/rede





mesa·az