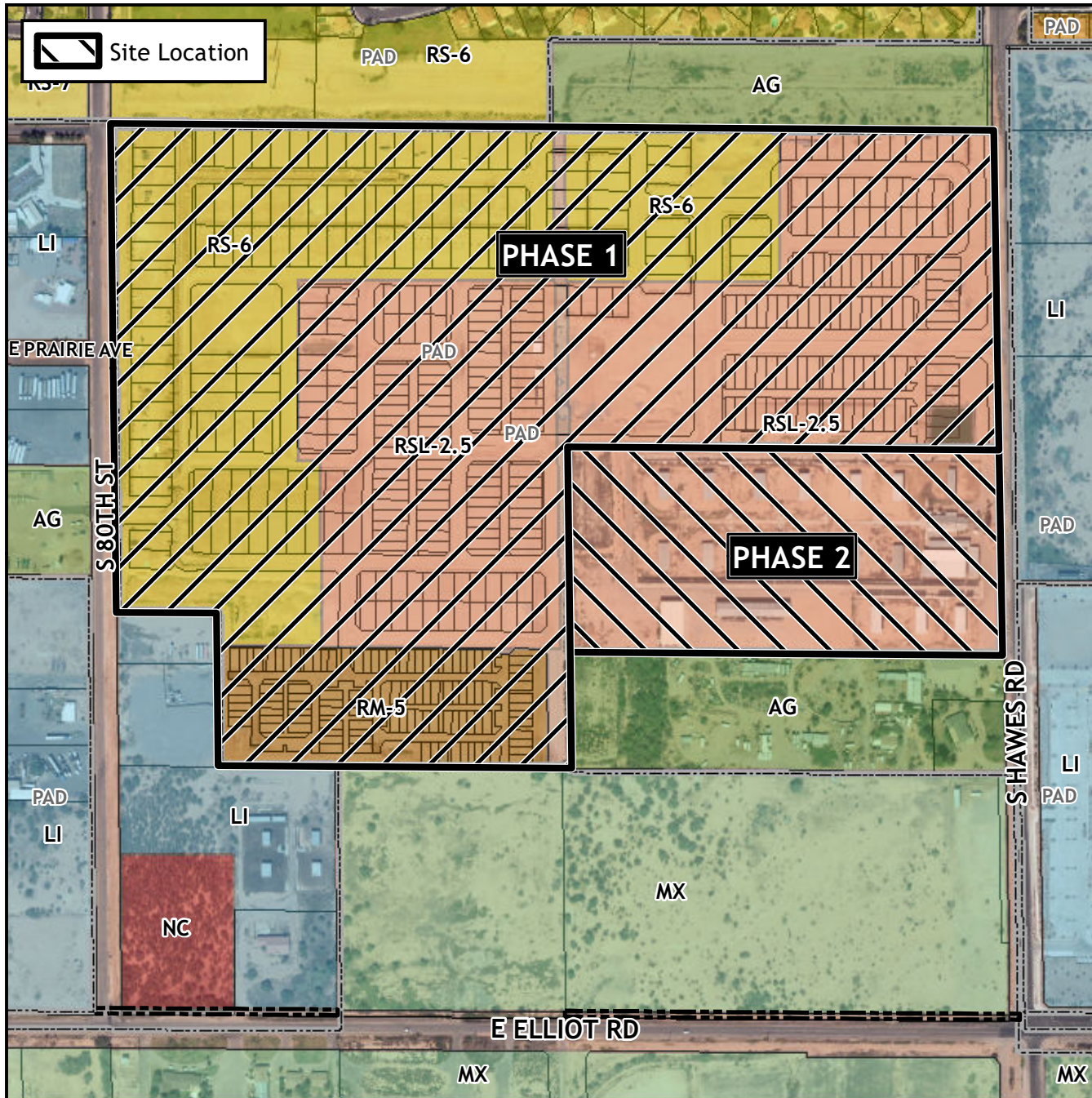


Planning and Zoning Vicinity Map: ZON23-00432

Case Details



CASE:

ZON23-00432

SITE / ADDRESS:

(District 6). Within the 3200 to 3500 blocks of South Hawes Road (west side), within the 3200 to 3500 blocks of the South 82nd Street alignment (both sides), and within the 3200 to 3500 blocks of South 80th Street (east side). Located north of Elliot Road on the west side of Hawes Road. (98± acres).

REQUEST:

Rezone 17.4± acres from Small Lot Single Residence 2.5 with a Planned Area Development Overlay (RSL-2.5-PAD) to RSL-2.5-PAD with a new PAD (RSL2.5-PAD-PAD) to allow for additional modification to development standards for (Village 1, Phase 2), modification of an existing Planned Area Development on the entire 98± acres, and a Major Site Plan Modification. This request will expand the existing Hawes Crossing Village 1 PAD to include a single residence development known as Village 1 Phase 2.

