



Design Review Board



DRB25-00570

Sprouts Farmers Market – Fiesta



Request

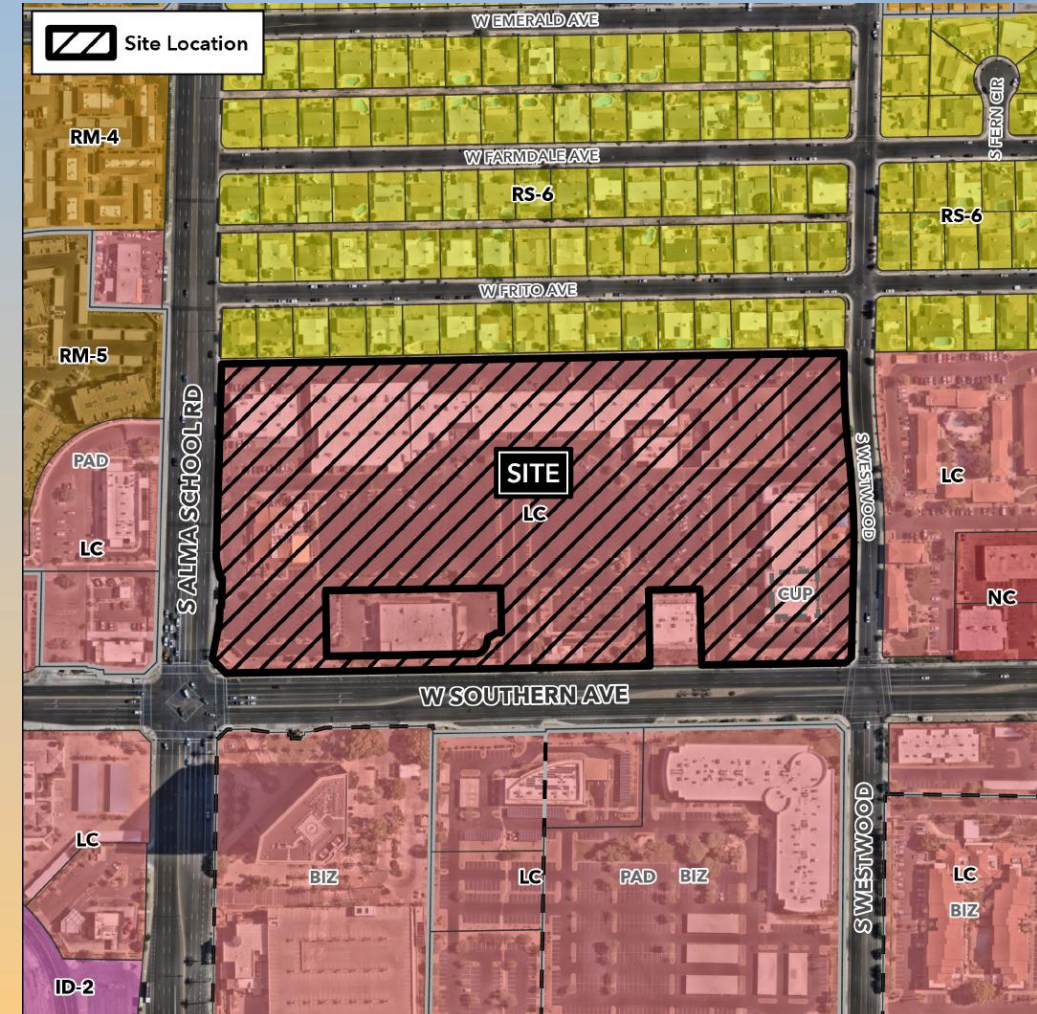
- Design Review
- For existing multi-tenant commercial center





Location

- North side of Southern Avenue
- East of Alma School Road





Site Photos



Looking north from Southern Ave



Site Photos



Looking northeast from Southern Ave



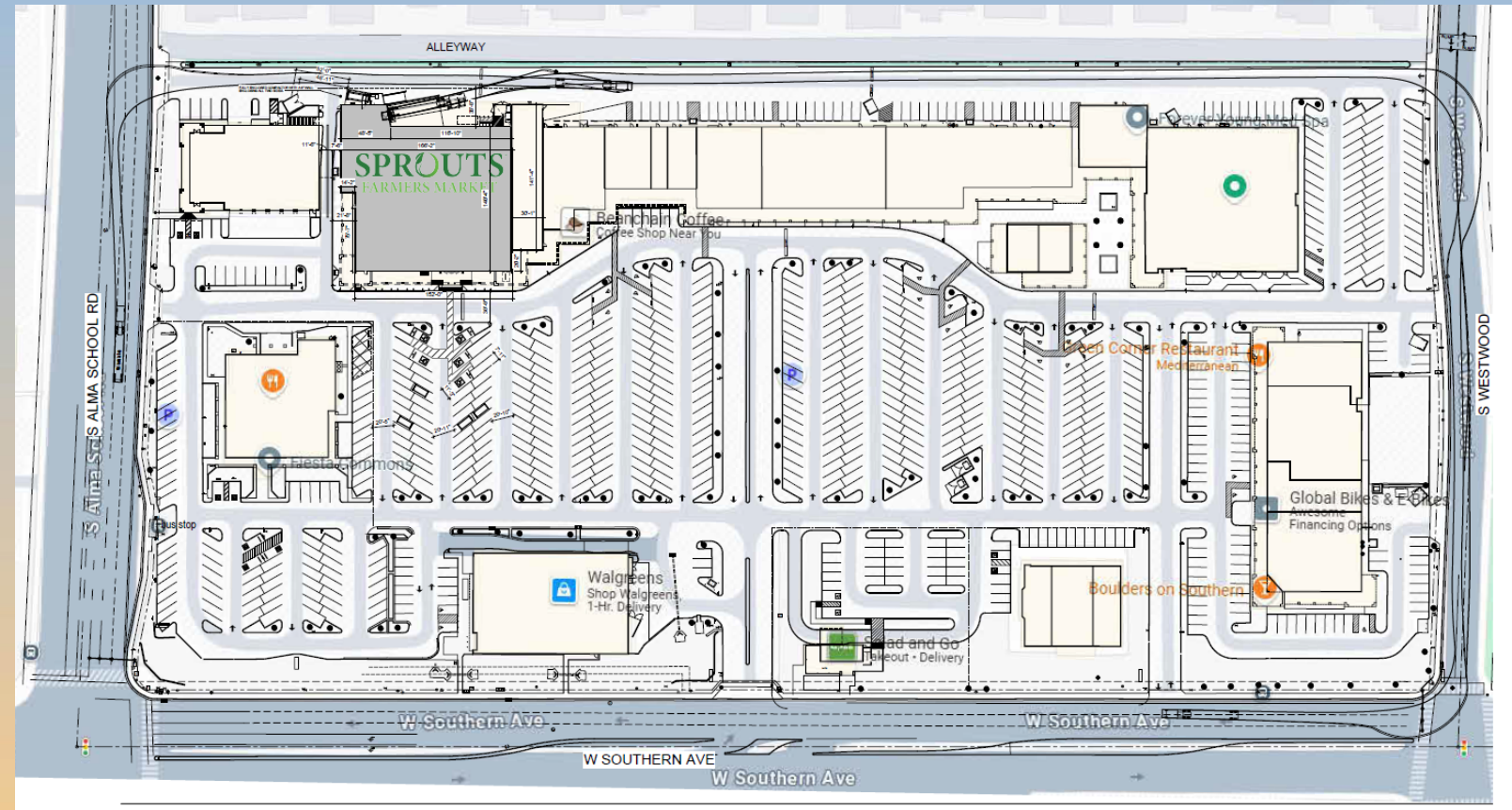
Site Aerial Photo





Site Plan

- Overall commercial center: 90,000 SF
- Façade upgrade to accommodate Sprouts





Elevations





Elevations



SOUTH ELEVATION - PART 1/4

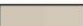




SCALE: 1" = 10'-0"



SOUTH ELEVATION - 2/4

SCALE: 1" = 10'-0"

MATERIALS & COLORS

	(1) PAINTED BRICKWORK
	(2) PAINTED BRICKWORK
	(3) PAINTED BRICKWORK
	(4) PAINTED BRICKWORK
	(5) PAINTED BRICKWORK
	(6) PAINTED BRICKWORK
	(7) PAINTED BRICKWORK





Elevations



SOUTH ELEVATION - 3/4

SCALE: 1" = 10'-0"



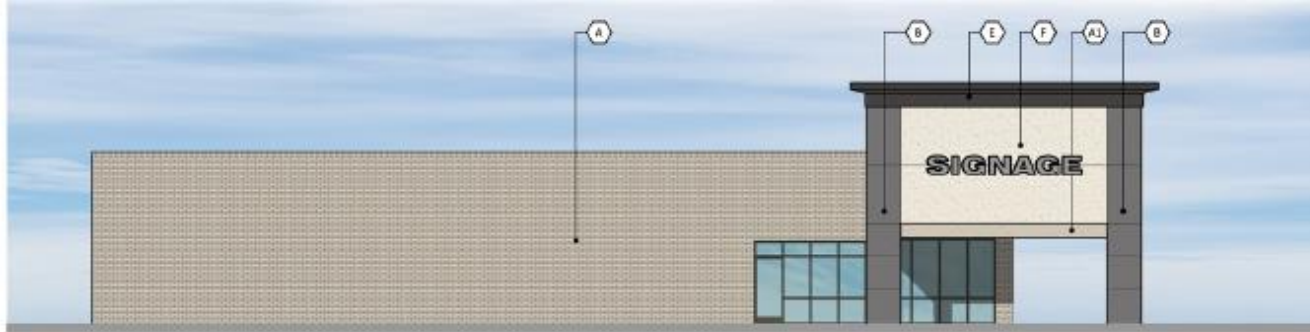
SOUTH ELEVATION - 4/4

SCALE: 1" = 10'-0"





Elevations



NORTH ELEVATION BLD.2

SCALE: 1" = 10'-0"



SOUTH ELEVATION BLD.2

SCALE: 1" = 10'-0"





Elevations



WEST ELEVATION BLD.2





Renderings





Renderings





Colors and Materials



**STOREFRONT
FINISH**
"DARK BRONZE"
(M01)



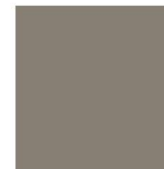
**STANDING SEAM
METAL ROOFING**
BERRIDGE
"AGED BRONZE"
(M03)



PAINT
PPG 1009-1
"TUNDRA FROST"
(P06)



PAINT
PPG 1142-6
"JERICOHO JADE"
(P07)



PAINT
PPG 1000-5
"BEAR CUB"
(P10)



PAINT
PPG 1024-4
"MOTH GRAY"
(P12)



PAINT
PPG 1006-7
"METROPOLIS"
(P15)



PAINT
EXISTING BRICK
MOTH GRAY
(P20)



STONE VENEER
CORONADO STONE
OLD WORLD LEDGE
"ANTIQUE CREAM"
(SV02)



SILL
CORONADO STONE
900 SERIES
"GREY"
(SV01)



PAINT
CUSTOM
PMS-2465
(BC01)



Findings

Staff is seeking review and recommendation on the following:

- ✓ Proposed building elevations

Staff welcomes any feedback



Design Review Board