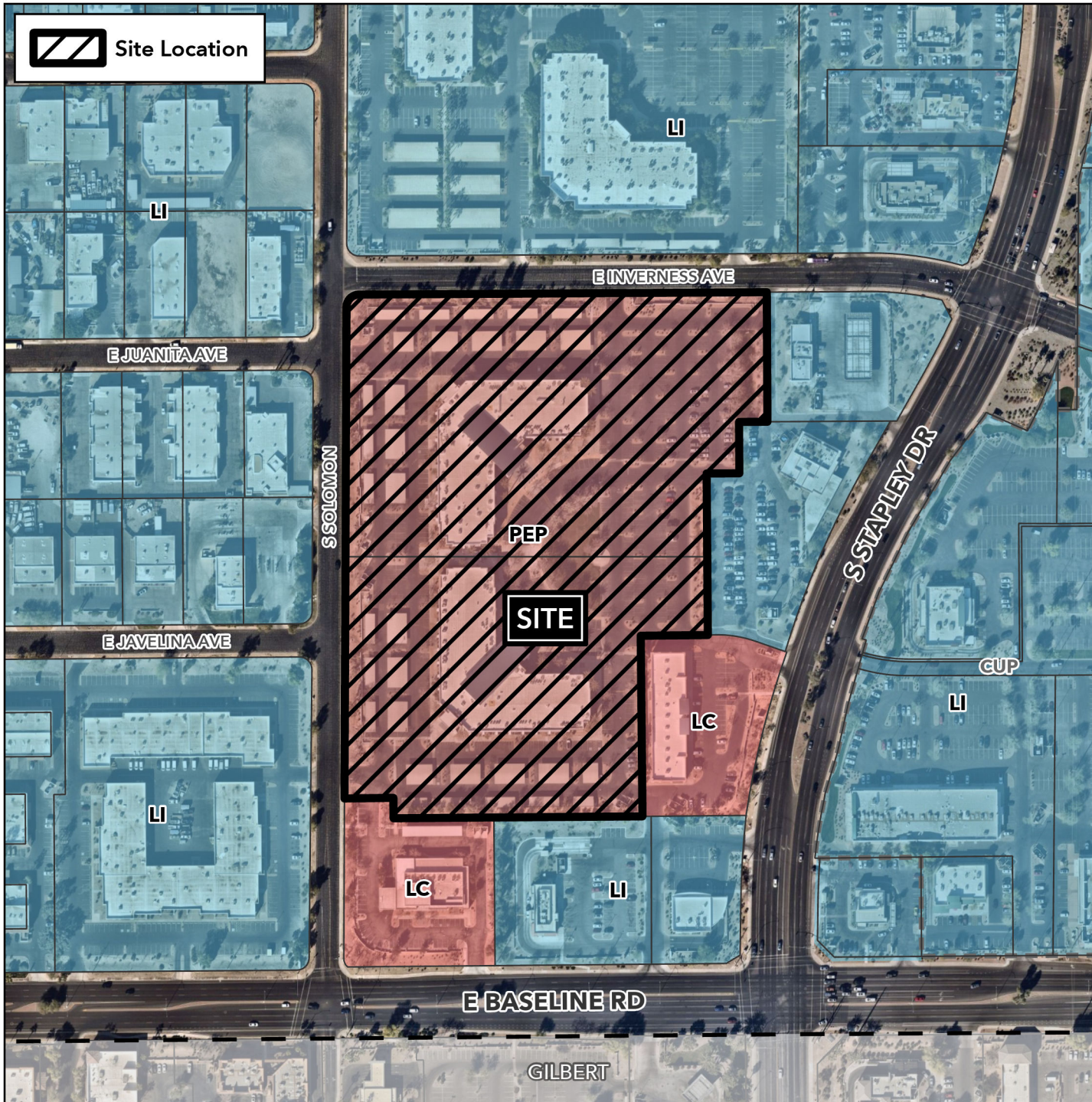


Board of Adjustment Vicinity Map: BOA25-00263

Case Details



Site Location



Case:

BOA25-00263

Site / Address:

14± acres located at 1840 and 1910 South Stapley Drive. (District 4)

Request:

Requesting a Special Use Permit (SUP) for a modification to a Comprehensive Sign Plan (CSP).

