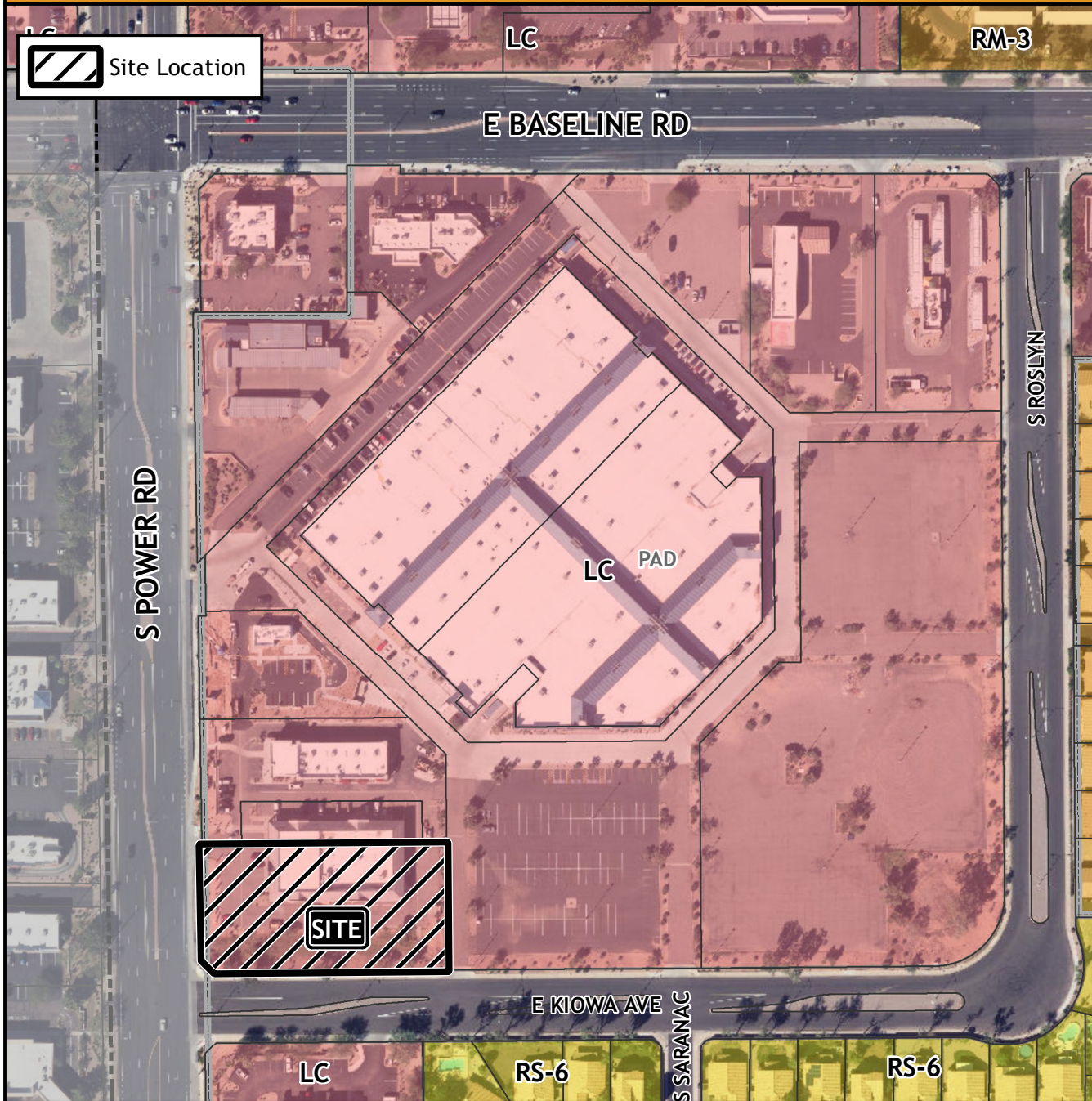


Board of Adjustment Vicinity Map: BOA23-00286



Case Details

Case:

BOA23-00286

Site / Address:

(District 6). 2121 South Power Road.
Located east of Power Road and south of
Baseline Road

Request:

Requesting a Substantial Conformance Improvement Permit (SCIP) to allow deviations from certain development standards to allow for the development of a restaurant with drive-thru in the Limited Commercial with a Planned Area Development overlay (LC-PAD) zoning district.

