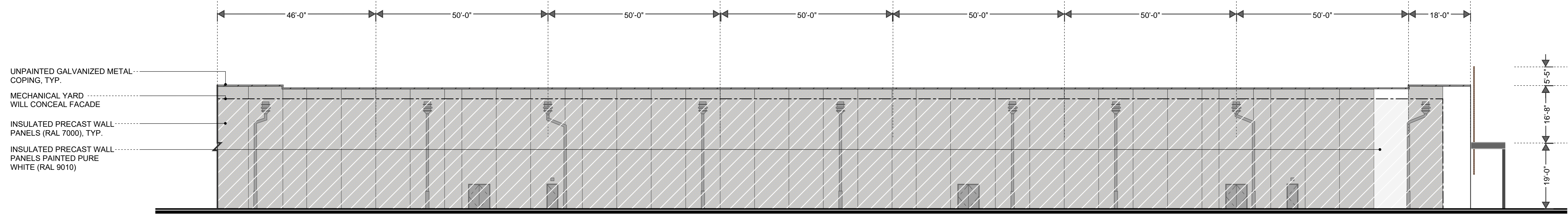
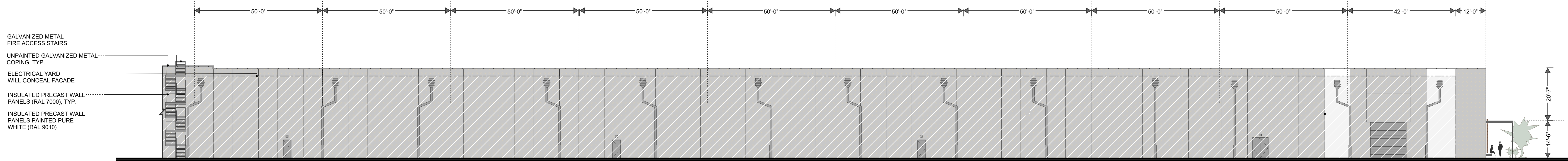


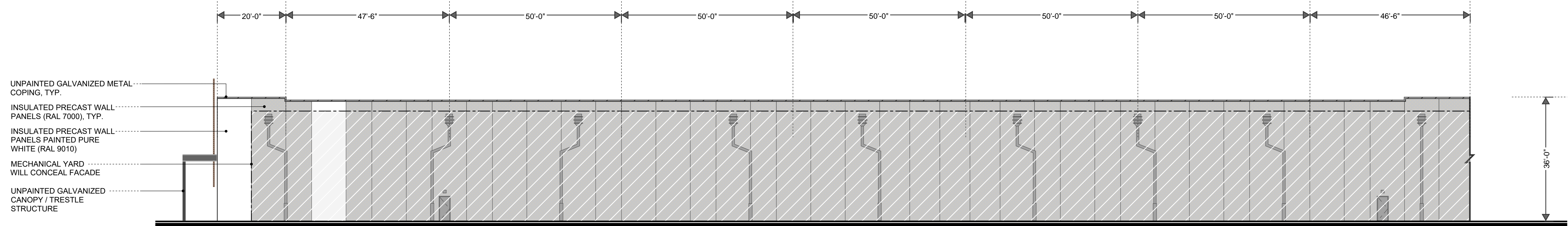
EAST ELEVATION



EAST ELEVATION - CONTINUED



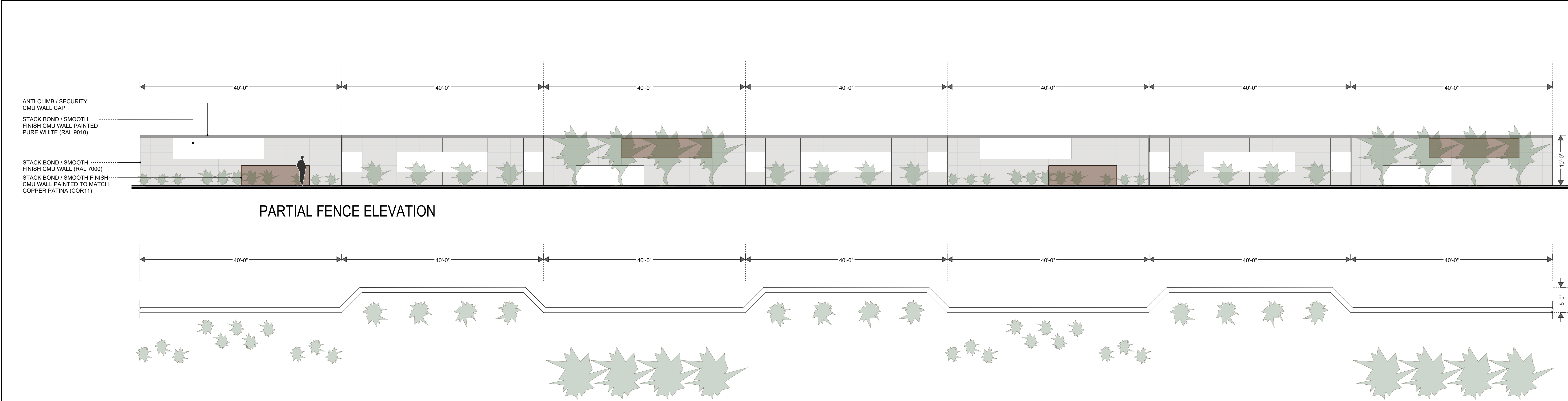
WEST ELEVATION



WEST ELEVATION - CONTINUED

BUILDING ELEVATION MATERIALS	
	PERFORATED METAL PANELS, COPPER PATINA (COR11)
	UNPAINTED GALVANIZED CANOPIES / TRESTLE STRUCTURE
	ANODIZED ALUMINUM FINIS AND GALVANIZED METAL DOORS AND FRAMES AND FIRE ACCESS STAIRS
	INSULATED PRECAST WALL PANELS (RAL 7000)
	INSULATED PRECAST CMU SPLIT FACE WALL PANELS (RAL 7000)
	INSULATED PRECAST WALL PANELS PAINTED PURE WHITE (RAL 9010) AND SOLID METAL PANEL ICON QUALITY STANDARD PIKE'S PEAK WHITE
	GLAZING
	LIGHT BLEU FILTERED LED LIGHT
	LANDSCAPING ELEMENTS

BUILDING ELEVATION MATERIALS PERCENT CALCULATION - N/A



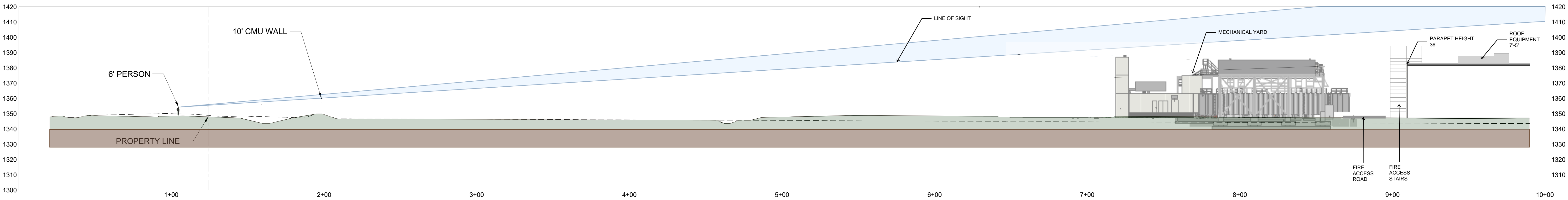
PARTIAL FENCE ELEVATION

PARTIAL FENCE PLAN VIEW

FOR REFERENCE ONLY - FULL SITE PERIMETER WALL WAS SUBMITTED AND APPROVED BY THE DESIGN REVIEW BOARD FOR PHASE 01 CONSTRUCTION.

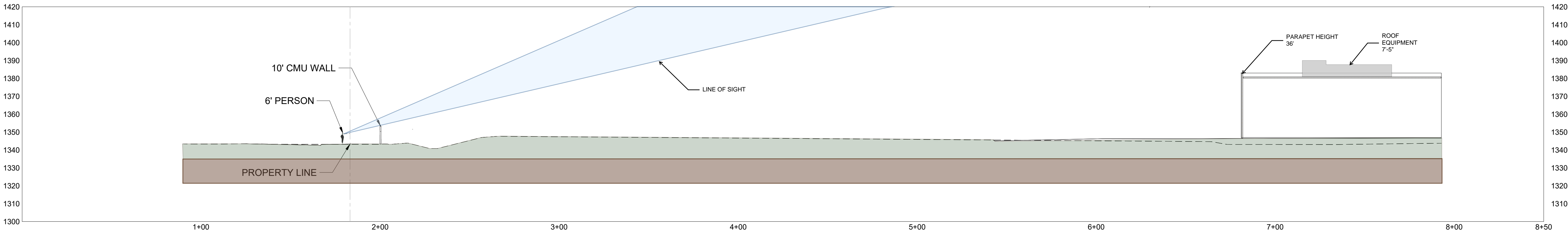
FENCE AND SIGNAGE ELEVATION MATERIALS	
	STACK BOND / SMOOTH FINISH CMU WALL PAINTED TO MATCH COPPER PATINA (COR11)
	UNPAINTED GALVANIZED METAL MONUMENT SIGN BOX
	ANODIZED ALUMINUM FINS AND ANODIZED ALUMINUM ANTI-CLIMB / SECURITY CMU WALL CAP
	STACK BOND / SMOOTH FINISH CMU WALL (RAL 7000)
	STACK BOND / SMOOTH FINISH CMU WALL PAINTED PURE WHITE (RAL 9010)
	LIGHT BLEU FILTERED LED LIGHT
	LANDSCAPING ELEMENTS
	PERFORATED METAL PANELS, COPPER PATINA (COR11)
	SOLID METAL PANEL ICON QUALITY STANDARD PIKE'S PREAK WHITE

LOS PROFILE DC2 - E-W

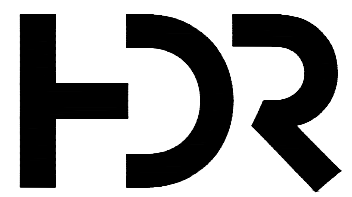


EAST - WEST LINE-OF-SIGHT SECTION

LOS PROFILE DC2 - S-N



NORTH - SOUTH LINE-OF-SIGHT SECTION



HDR, INC.
1917 SOUTH 67th STREET
OMAHA, NEBRASKA 68106
(402) 399-1000

CONFIDENTIAL
PROJECT RED HAWK
DESIGN REVIEW SUBMITTAL

LINE-OF-SIGHT SECTIONS

SCALE: 1" = 30'

SHEET NUMBER:

A-06