



Design Review Board



DRB25-00993

New Life Fellowship Hall Building

Chloe Durfee Daniel, Planner II

April 14, 2026



Request

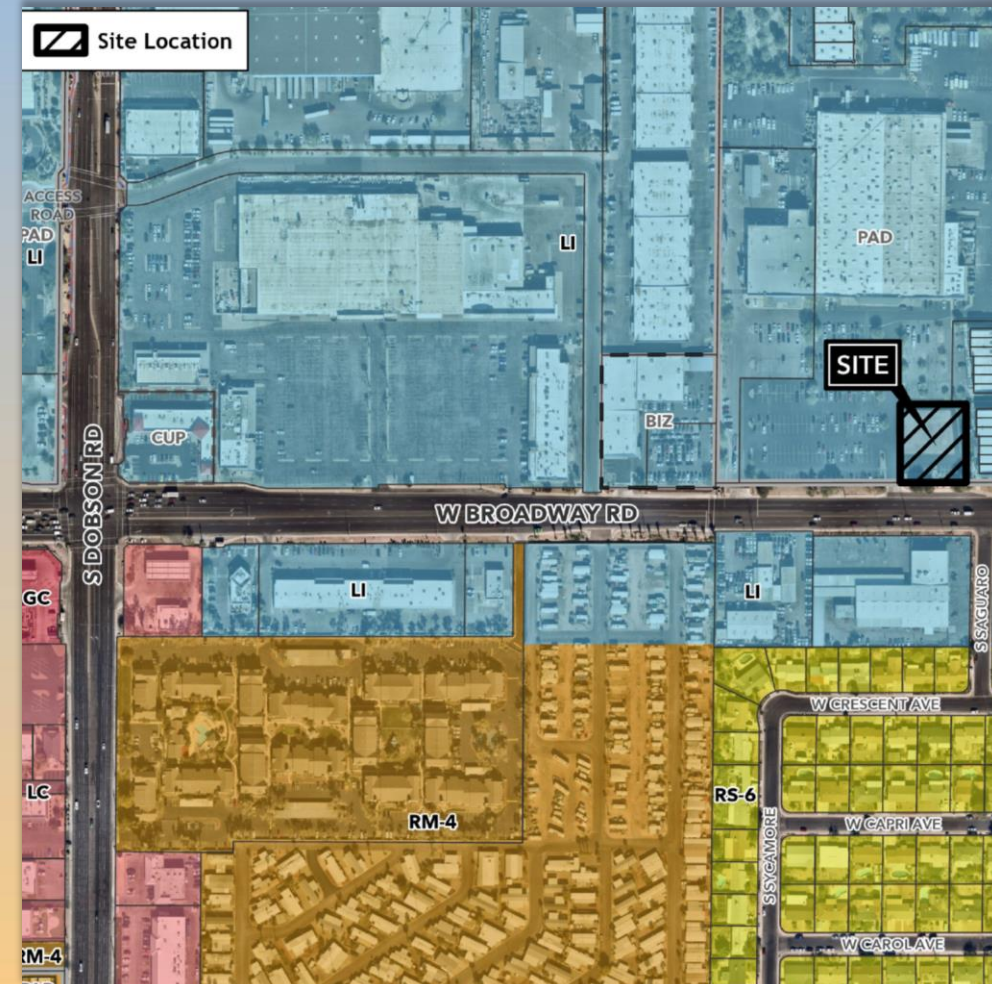
- Design Review
- Place of Worship





Location

- North side of Broadway Road
- East of Dobson Road





Site Photo

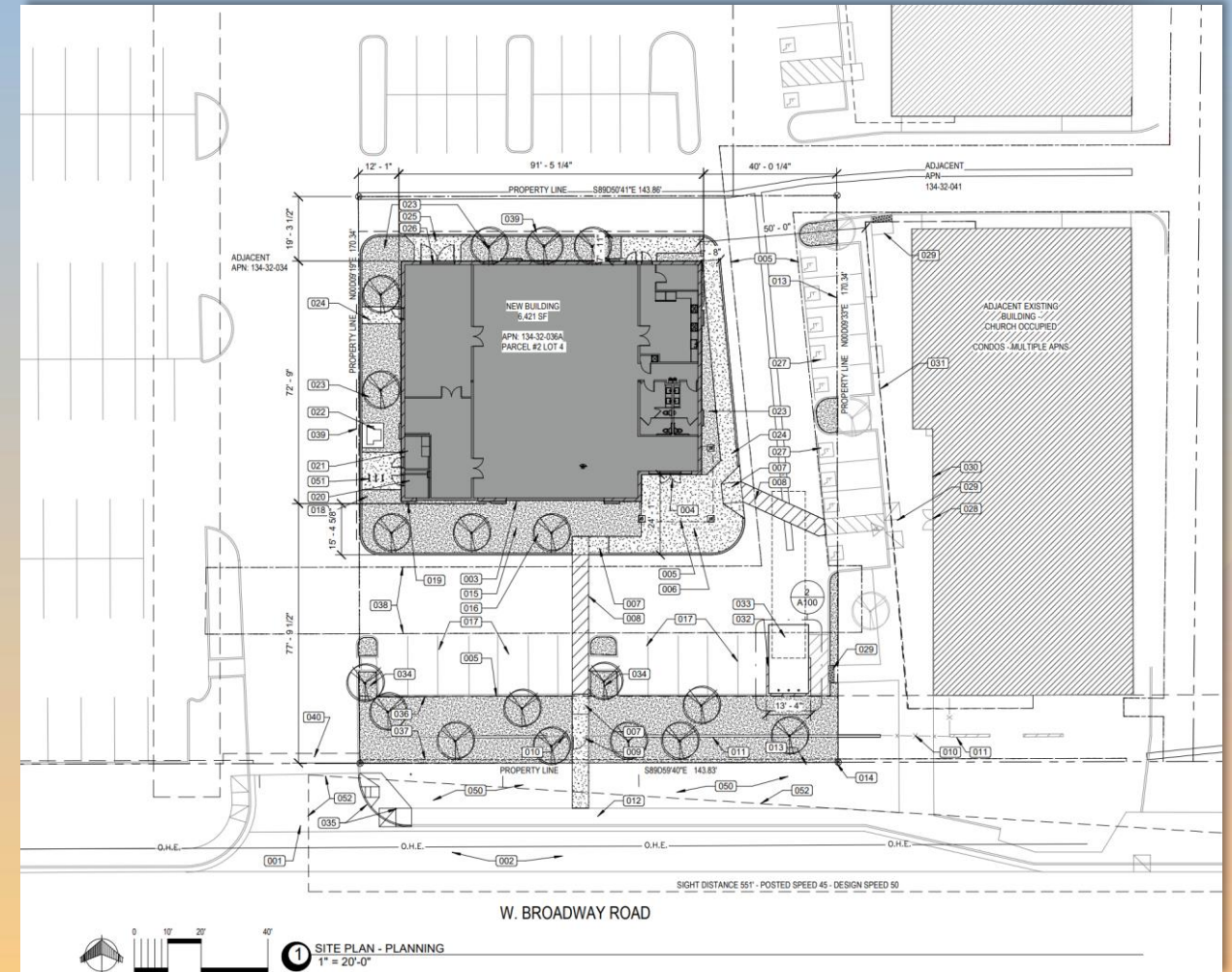


Looking north from Broadway Road



Site Plan

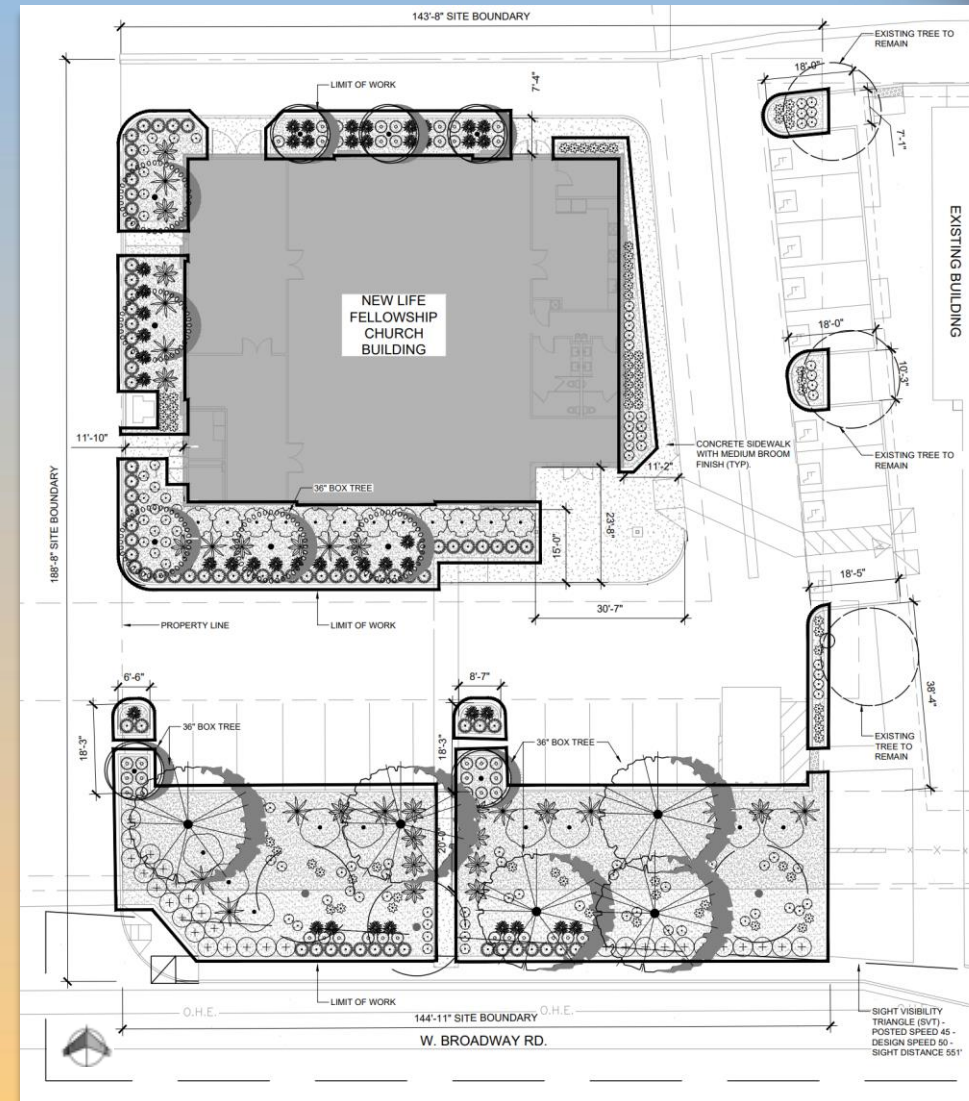
- 6,421 sq. ft. building
- Parking spaces shared with group industrial development
- Access from Broadway Road from the southwest through shared drive





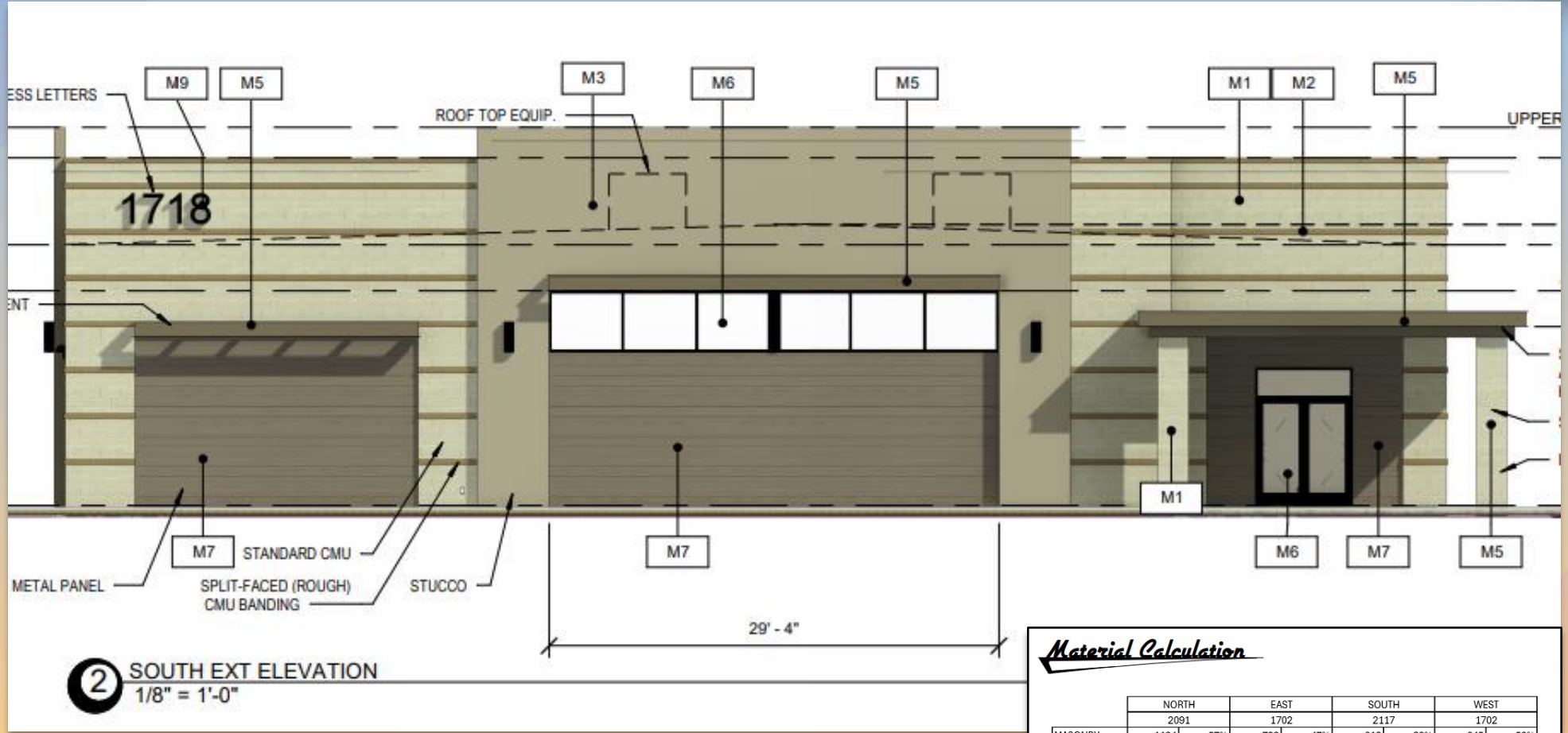
Landscape Plan

PLANT SCHEDULE					
SYMBOL	QTY	BOTANICAL / COMMON NAME	SIZE	CAL	REMARKS
TREES					
	5	Acacia aneura Mulga	(3) 24" box (2) 36" box	Cal 1.0"	25 s.f. each
	5	Chilopsis linearis Desert Willow	(4) 24" box (1) 36" box	Cal 1.0"	25 s.f. each
	3	Existing Mesquite Tree	-		50 s.f. each
	5	Prosopis glandulosa `Thornless AZT` Thornless Honey Mesquite	36" box Multi-trunk	Cal 2.0"	50 s.f. each
SYMBOL	QTY	BOTANICAL / COMMON NAME	SIZE	REMARKS	
SHRUBS					
	19	Bougainvillea x `Torch Glow` Torch Glow Bush Bougainvillea	5 gal	Can Full	50 s.f. each
	9	Caesalpinia pulcherrima Red Bird Of Paradise	5 gal	Can Full	50 s.f. each
	12	Tecoma x `Sparky` Sparky Yellow Bells	15 gal		50 s.f. each
ACCENTS					
	97	Euphorbia rigida Gopher Plant	5 gal	Can Full	10 s.f. each
	13	Hesperaloe funifera Giant Hesperaloe	5 gal	Can Full	25 s.f. each
	44	Hesperaloe parviflora Red Yucca	5 gal	Can Full	25 s.f. each
	78	Muhlenbergia capillaris `Lenca` Regal Mist® Pink Muhly Grass	5 gal		10 s.f. each
GROUNDCOVERS AND PERENNIALS					
	41	Convolvulus cneorum Bush Morning Glory	1 gal	Can Full	5 s.f. each
	30	Lantana camara `New Gold` New Gold Lantana	1 gal	Can Full	25 s.f. each
	72	Ruellia brittoniana `Katie` Katie's Ruellia	1 gal	Can Full	25 s.f. each
SYMBOL	QTY	BOTANICAL / COMMON NAME	TYPE/SIZE	REMARKS	
	7,139 sf	Palo Verde Brown Granite	1/2" Screened	2" Deep	
MISCELLANEOUS					





Elevations

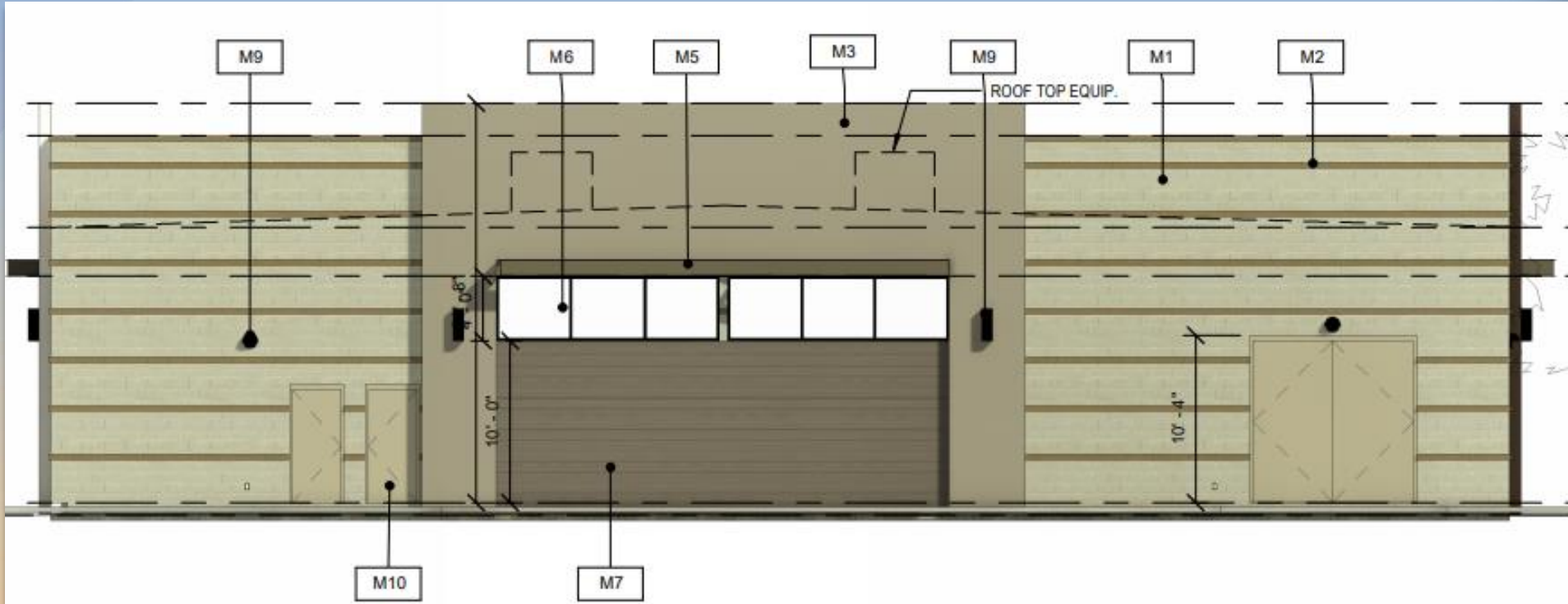


Material Calculation

	NORTH		EAST		SOUTH		WEST	
	2091	1702	1702	1702	2117	1702	1702	1702
MASONRY	1194	57%	796	47%	813	38%	845	50%
STUCCO	508	24%	475	28%	514	24%	475	28%
METAL PANEL	411	20%	371	22%	761	36%	357	21%
AWNING	28	1%	25	1%	29	1%	25	1%



Elevations



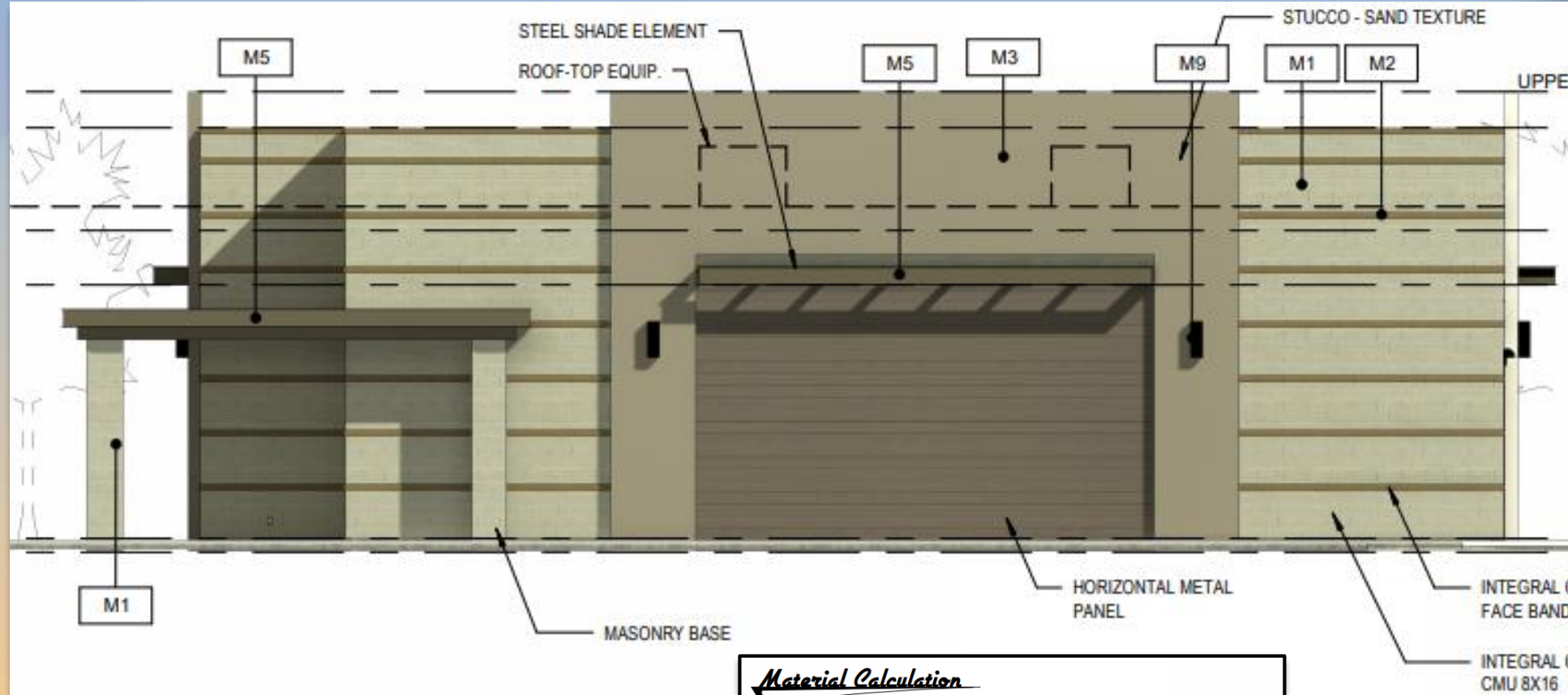
4 NORTH EXT ELEVATION
1/8" = 1'-0"

Material Calculation

	NORTH		EAST		SOUTH		WEST	
	2091		1702		2117		1702	
MASONRY	1194	57%	796	47%	813	38%	845	50%
STUCCO	508	24%	475	28%	514	24%	475	28%
METAL PANEL	411	20%	371	22%	761	36%	357	21%
AWNING	28	1%	25	1%	29	1%	25	1%



Elevations



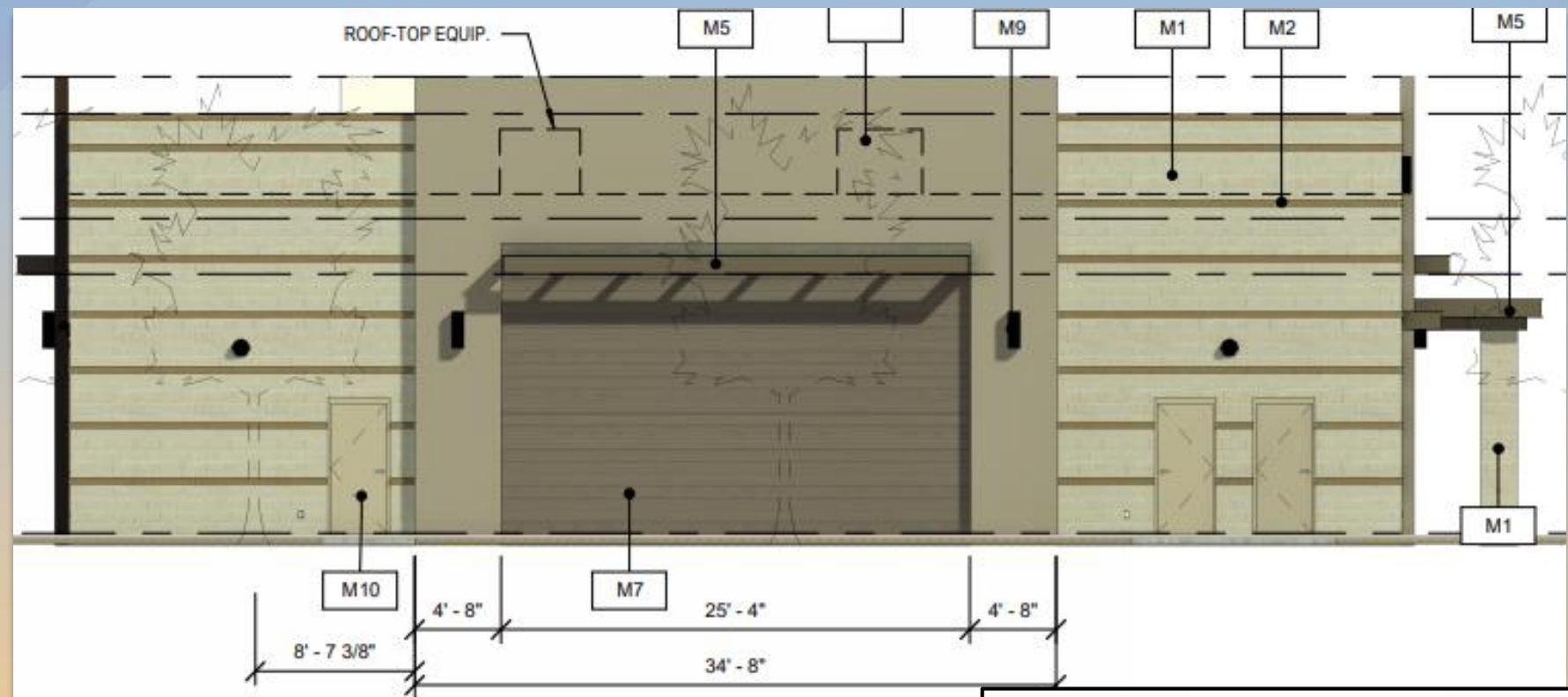
1 EAST EXT ELEVATION
1/8" = 1'-0"

Material Calculation

	NORTH	EAST	SOUTH	WEST
	2091	1702	2117	1702
MASONRY	1194	796	813	845
STUCCO	508	475	514	475
METAL PANEL	411	371	761	357
AWNING	28	25	29	25
	57%	47%	38%	50%
	24%	28%	24%	28%
	20%	22%	36%	21%
	1%	1%	1%	1%



Elevations



3 WEST EXT ELEVATION
1/8" = 1'-0"

Material Calculation

	NORTH		EAST		SOUTH		WEST	
	2091		1702		2117		1702	
MASONRY	1194	57%	796	47%	813	38%	845	50%
STUCCO	508	24%	475	28%	514	24%	475	28%
METAL PANEL	411	20%	371	22%	761	36%	357	21%
AWNING	28	1%	25	1%	29	1%	25	1%



Renderings





Renderings





Renderings





Colors and Materials



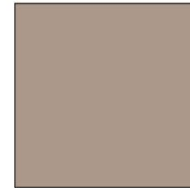
MATERIAL M1
BROWN STANDARD FINISH CMU - 16X8
RUNNING BOND

ECHELON (OLDCASTLE) "PEBBLE" COLOR



MATERIAL M2
BROWN-GRAY SPLIT FACED CMU
16X8 - ACCENT SINGLE ROW

ECHELON (OLDCASTLE) "GRAY" COLOR



MATERIAL M7
METAL PANEL - CONCEALED FASTENER
16" WITH 1" REVEAL - HORIZONTAL

COLOR TO

ACCENT METAL WALLS

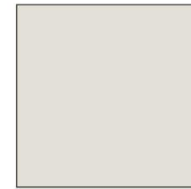
PANEL EXAMPLE BELOW



MATERIAL M3
STUCCO - SAND FINISH

SHERWIN WILLIAMS SW7052
"GRAY AREA"

ACCENT WALLS



MATERIAL M4
STUCCO - SAND FINISH

SHERWIN WILLIAMS SW7049
"NUANCE"

ENTRY SOFFIT



MATERIAL M8
POURED IN PLACE CONCRETE

STANDARD GRAY CONCRETE

SIDEWALKS AND CURBS



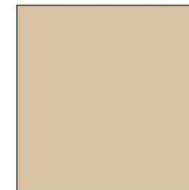
MATERIAL M9
BLACK ANODIZED ACCESSORIES
AND FIXTURES



MATERIAL M5
PAINT - EXTERIOR SEMI-GLOSS

SHERWIN WILLIAMS SW7052
"GRAY AREA"

EXTERIOR METALS



MATERIAL M10
PAINT - EXTERIOR SEMI-GLOSS

SHERWIN WILLIAMS SW0036
"BUCKRAM BINDING"

EXTERIOR STEEL DOORS



MATERIAL M6
BLACK ANODIZED FRAMES WITH
VITRO SOLARGRAY 1" INSULATED
GLAZING

WINDOWS AND GLAZED DOORS
EXTERIOR LIGHTS TO BE BLACK ANODIZED



Alternative Compliance

- ✓ No more than 50% of the total façade may be covered with one (1) single material.



Findings

Staff is seeking your review and decision on the following:

- ✓ Proposed building elevations and landscape design
- ✓ Alternative Compliance request

Staff recommends Approval with Conditions



Design Review Board