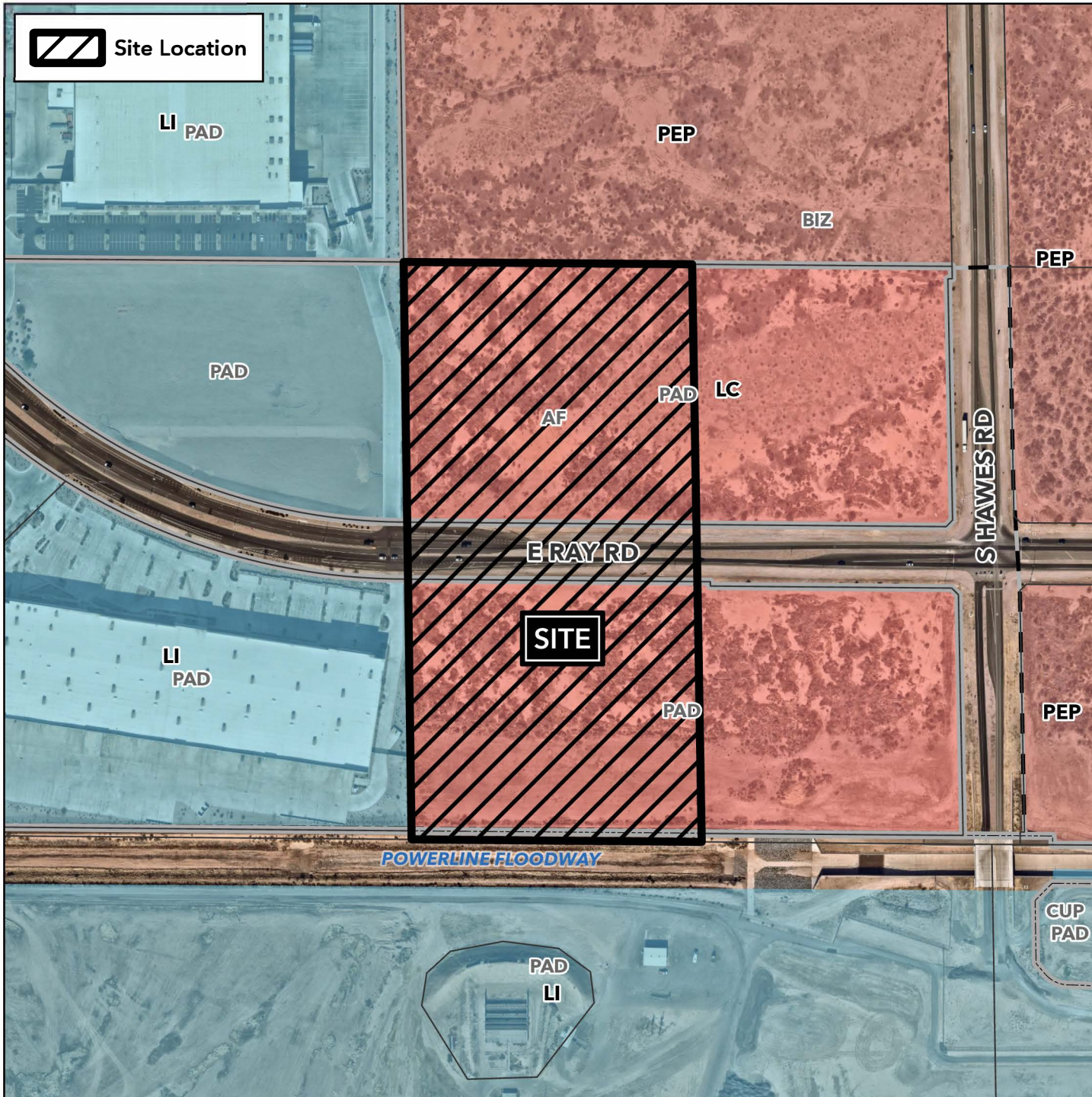


# Design Review Vicinity Map: DRB24-01101

## Case Details

 Site Location



### Case:

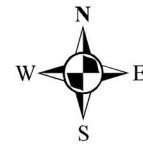
DRB24-01101

### Site / Address:

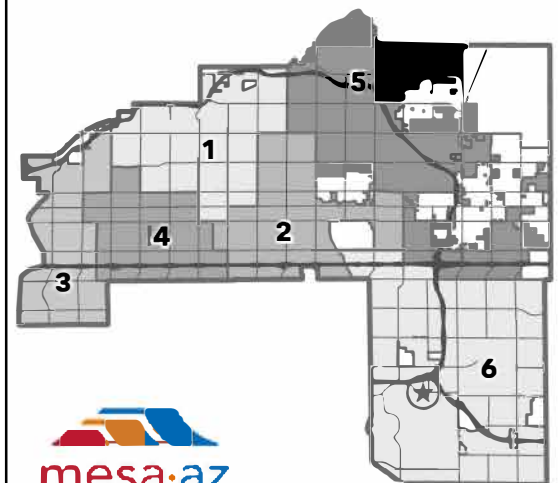
(District 6) 17.7± acres located approximately 650± feet west of the northwest and southwest corners of East Ray Road and South Hawes Road.

### Request:

Design Review for an approximately 235,600 square foot industrial development.



0 150 300 600  
Feet



  
mesa·az