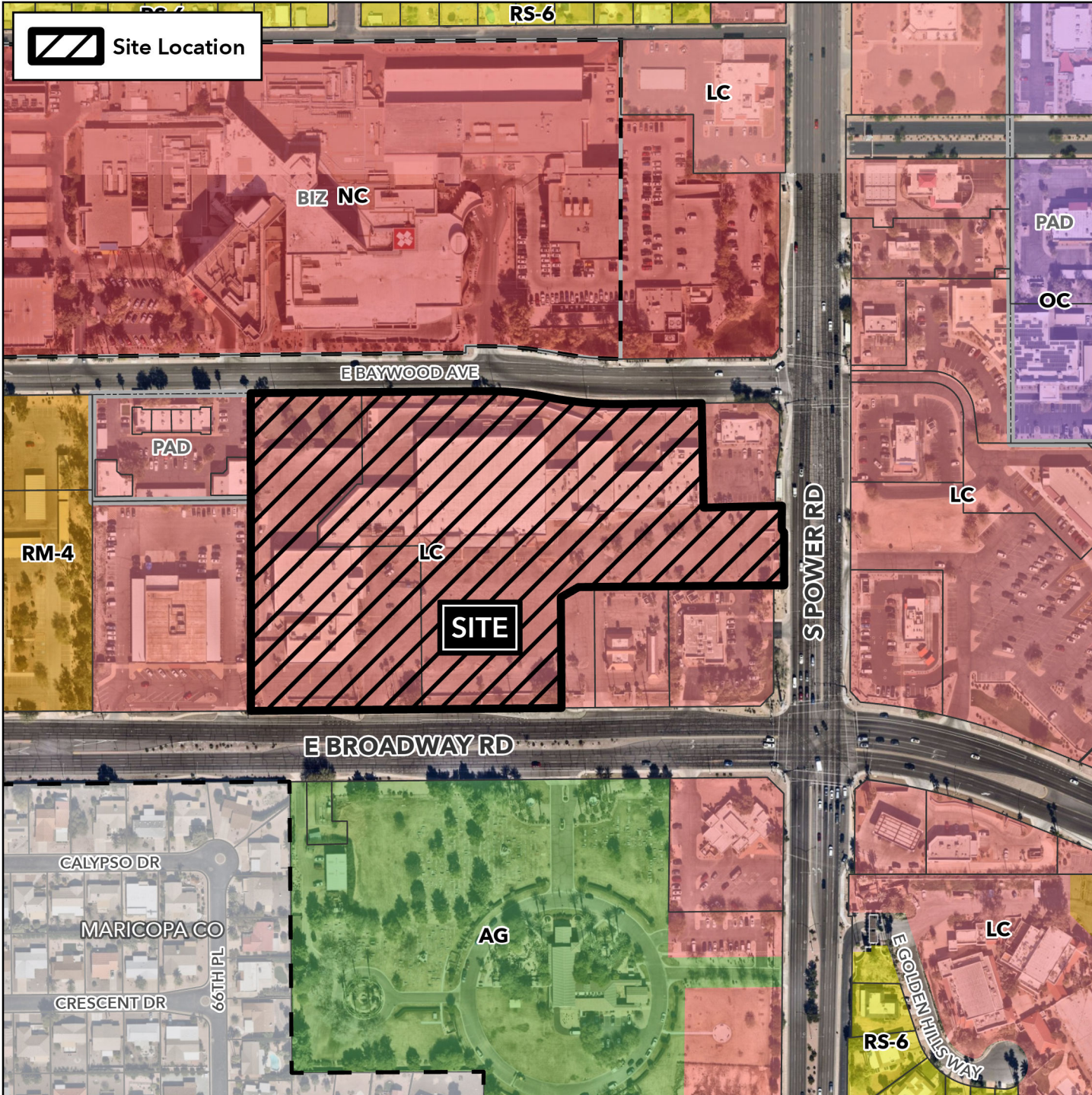


Board of Adjustment Vicinity Map: BOA25-01000

Case Details

 Site Location



Case:

BOA25-01000

Site / Address:

9.8± acres located at the northwest corner of East Broadway Road and South Power Road. (District 2)

Request:

Substantial Conformance Improvement Permit (SCIP). This request will allow for modifications to an existing Group Commercial Center.

