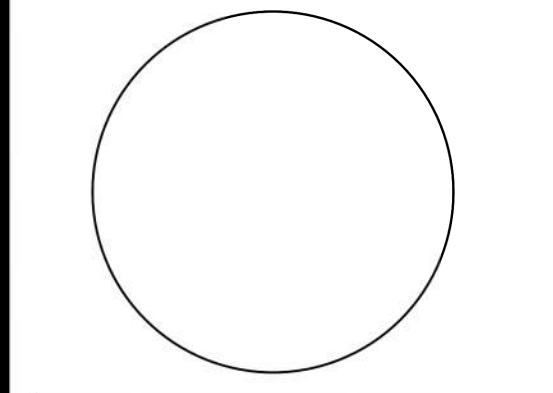


NUMBER	REVISION	DATE



SHEET TITLE:
 EXISTING EXTERIOR ELEVATIONS
 ISSUE DATE: 03/23/2026
 DRAWN BY: JH
 CHECKED BY: BJ
 PROJECT No.: 000000
 SHEET:

GENERAL DRAWING NOTES

- A. REFER TO THE A0.X SERIES DRAWINGS FOR ARCHITECTURAL GENERAL NOTES, MATERIAL SYMBOLS, ABBREVIATIONS, AND DIMENSIONING CONVENTIONS USED ON THIS DRAWING.
- B. REFER TO AND COORDINATE WITH STRUCTURAL, MECHANICAL, PLUMBING, AND ELECTRICAL DRAWINGS FOR ADDITIONAL INFORMATION NOT SHOWN ON THIS DRAWING.
- C. REFER TO AND COORDINATE WITH CIVIL DRAWINGS FOR ALL FINISH GRADES.
- D. REFER TO A4.X.X SERIES DRAWINGS FOR ENLARGED EXTERIOR ELEVATIONS, BUILDING SECTIONS, TILT WALL ELEVATIONS, & WALL SECTIONS.
- E. REFER TO A9.2.X SERIES DRAWINGS FOR DOOR, GLAZING & LOUVER SCHEDULES, ELEVATIONS & DETAILS.

REFERENCE KEYNOTES

- 08-05 14'-0"x14'-0" HIGH LIFT OVERHEAD DOOR, REFER TO DOOR SCHEDULE FOR MORE INFO. OVERHEAD DOORS TO RECEIVE (2) BOLLARDS ON INTERIOR SIDE, AND (2) BOLLARDS ON EXTERIOR SIDE OF DOOR, ALIGNED WITH DOOR OPENING FOR PROTECTION.

EXTERIOR WALLS

- EXTERIOR WALL KEY:**
- CMU1 8" CMU EXTERIOR WALL ASSEMBLY
SMOOTH FACE 8"x8"x16" CMU - STRUCK JOINTS
 - CMU2 8" CMU EXTERIOR WALL ASSEMBLY
SINGLE-SCORE 8"x8"x16" CMU - RAKED JOINTS
 - CMU3 8" CMU EXTERIOR WALL ASSEMBLY
SPLIT FACED FACE 8"x8"x16" CMU - RAKED JOINTS

PAINT

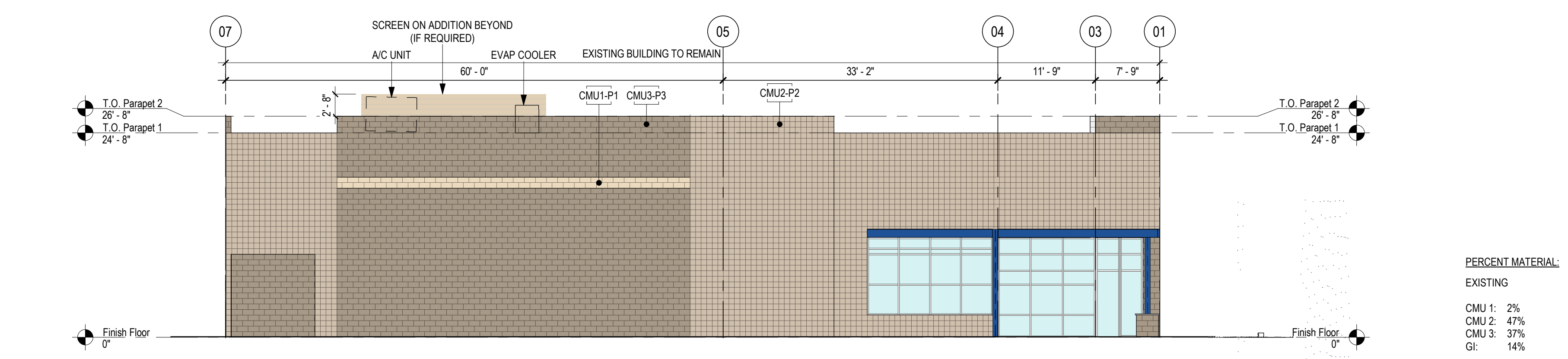
- PAINT KEY**
- P1 LIGHT TAN
DUNN EDWARDS, INSIDE PASSAGE, DEC764
MATCH EXISTING COLOR.
 - P2 TAN
DUNN EDWARDS, STEVEARENO BEIGE, DEC766
MATCH EXISTING COLOR.
 - P3 DARK TAN
DUNN EDWARDS, BISON BEIGE, DEC750
MATCH EXISTING COLOR.
 - P4 BLUE
DUNN EDWARDS, DEEP SAPPHIRE, DEA137
MATCH EXISTING COLOR ON ADJACENT STREET.

GLAZING

- GLAZING KEY**
- AL FRAME:
2" x 4-1/2" CLEAR ANODIZED ALUM AB-8
STOREFRONT.
 - G1 GLASS:
SOLARBAN 60, 1" INSULATED GLAZING, LOW-E
SOLARCOOL SOLARGRAY.
 - G2 GLASS:
SPANDRELITE, 6MM SPANDREL HEAT-TREATED
GLAZING, BLACK.
- NOTE: ALL GLAZING TO COMPLY WITH IBC 2406.

WINDOW TYPES

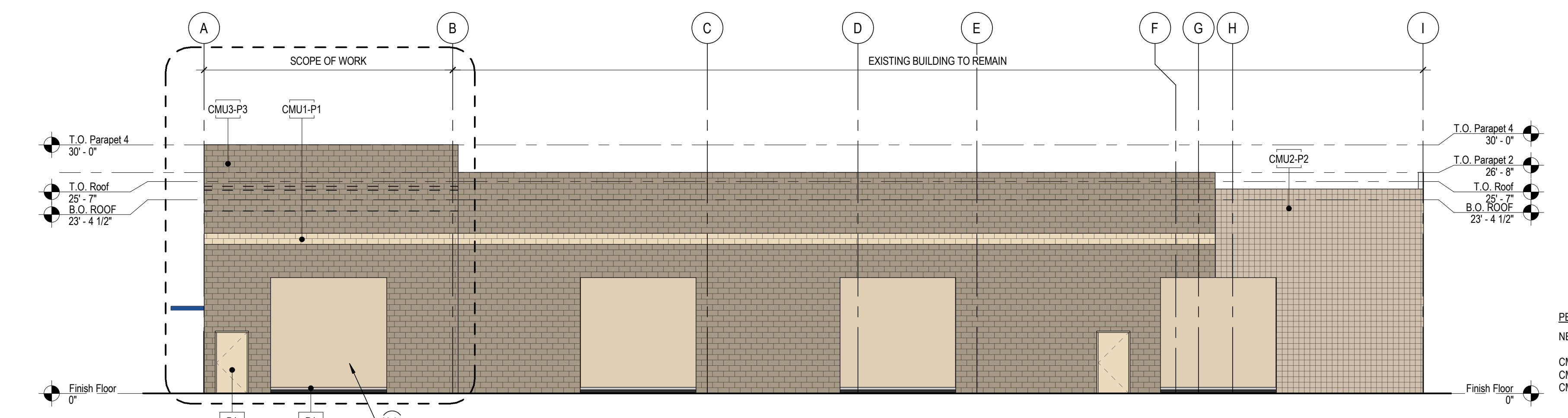
- W1 WINDOW:
8'-0" W X 6'-0" H WINDOW WITH G1 GLASS.
- W2 WINDOW:
8'-0" W X 2'-0" H WINDOW WITH G2 GLASS.
- W3 WINDOW:
8'-0" W X 8'-8" H WINDOW WITH G1 & G2 GLASS.



1 North Elevation
 1" = 10'-0"

PERCENT MATERIAL:

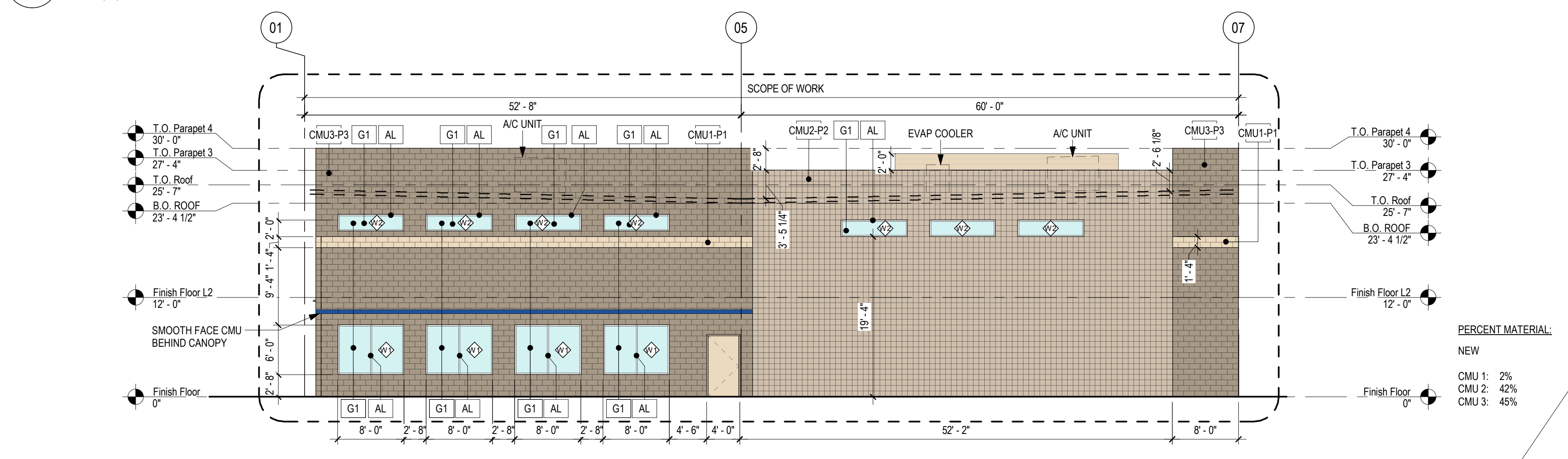
EXISTING	NEW
CMU 1: 2%	CMU 1: 4%
CMU 2: 47%	CMU 2: 0%
CMU 3: 37%	CMU 3: 67%
Gl: 14%	



2 East Elevation
 1" = 10'-0"

PERCENT MATERIAL:

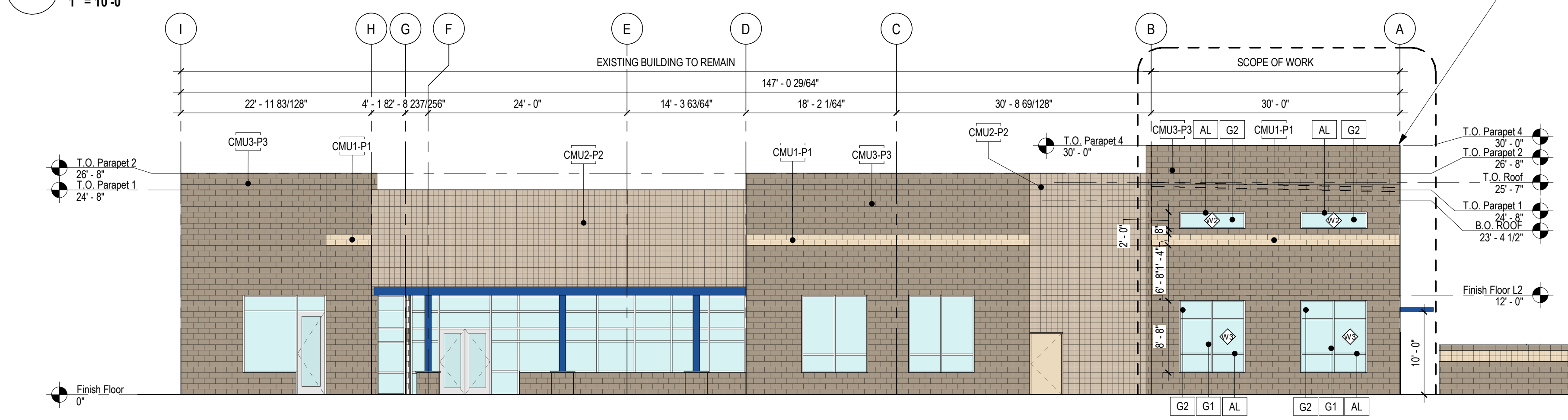
NEW	EXISTING
CMU 1: 4%	CMU 1: 8%
CMU 2: 0%	CMU 2: 0%
CMU 3: 67%	CMU 3: 58%



3 South Elevation
 1" = 10'-0"

PERCENT MATERIAL:

NEW	EXISTING
CMU 1: 2%	CMU 1: 2%
CMU 2: 42%	CMU 2: 42%
CMU 3: 45%	CMU 3: 45%



4 West Elevation
 1" = 10'-0"



PERCENT MATERIAL:

NEW	EXISTING
CMU 1: 2%	CMU 1: 2%
CMU 2: 22%	CMU 2: 29%
CMU 3: 48%	CMU 3: 44%