

# MATERIAL/COLOR SCHEDULE

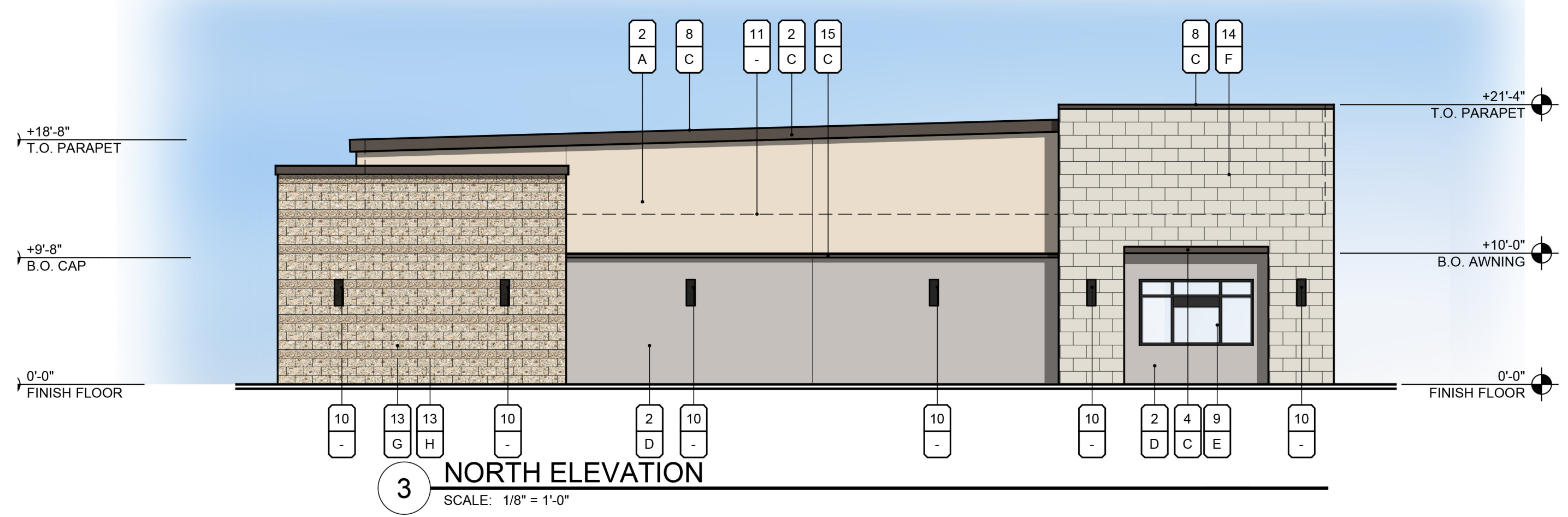
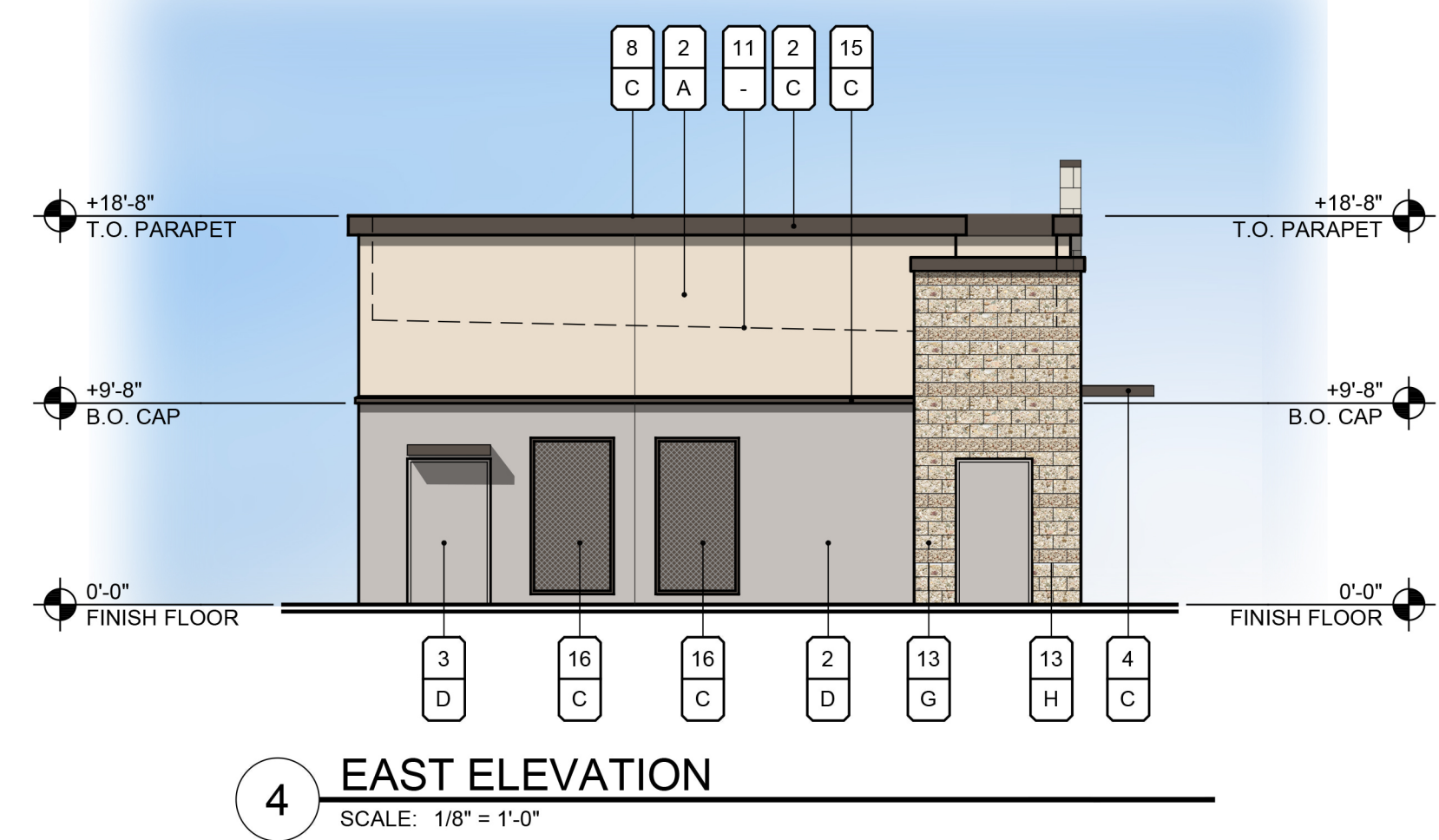
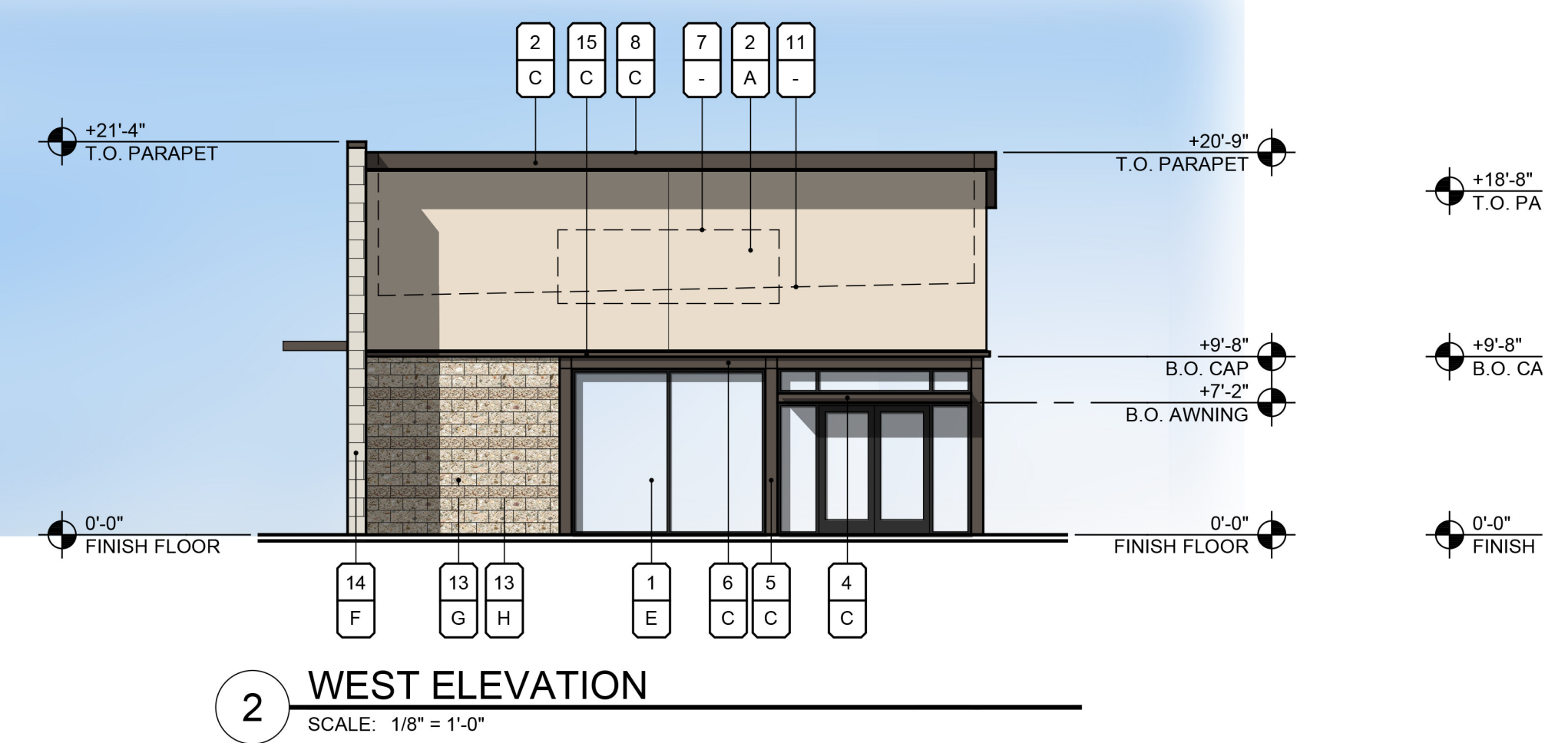
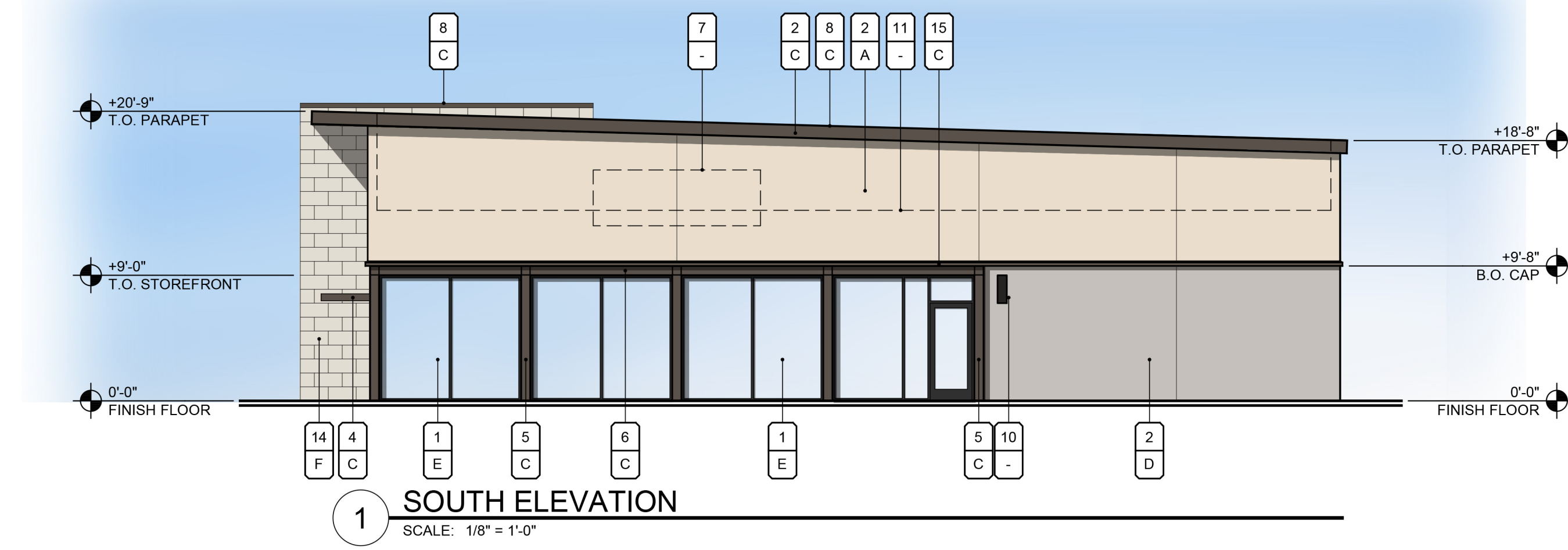
## MATERIALS

1. ANODIZED ALUMINUM STOREFRONT FRAME WITH 1" INSULATED LOW-E, CLEAR GLAZING
2. INTEGRAL COLOR E.I.F.S. - FINE SAND TEXTURE
3. HOLLOW METAL DOOR AND FRAME - PAINTED
4. METAL AWNING
5. STEEL COLUMN - PAINTED
6. STEEL BEAM - PAINTED
7. FUTURE TENANT SIGNAGE UNDER SEPARATE PERMIT AND SUBMITTAL
8. 22 GA PRE-FINISHED METAL CAP FLASHING
9. AUTOMATIC DRIVE-THRU WINDOW
10. LIGHT FIXTURE - DARK BRONZE
11. ROOF LINE BEYOND SHOWN DASHED
12. HVAC EQUIPMENT BEYOND SHOWN DASHED
13. CMU VENEER
14. STONE VENEER
15. E.I.F.S. ACCENT BAND
16. GREEN SCREEN

## COLORS

- |                               |   |
|-------------------------------|---|
| by Dunn Edwards (or Equal):   | by Eldorado Stone (or Equal):                 |
| A. DEC765 - "BONE"            | F. Thin Stone Veneer Marquee 24 - "Dove Tail" |
| B. DEC717 - "BAKED POTATO"    |   |
| C. DEC756 - "WEATHERED BROWN" | by Echelon / Trenwyth Masonry Blocks:         |
| D. DEC795 - "GRAY PEARL"      | G. Trendstone - "Pebble Beach"                |
|                               | H. Mesastone - "Huntington Gray"              |
- Aluminum Storefront:  
E. "DARK BRONZE ANODIZED"

MATERIAL   
FINISH



# EXTERIOR ELEVATIONS

S.W.C. SIGNAL BUTTE RD. AND RUBIDIUM AVE.  
MESA, AZ



1155 W. Rio Salado Parkway, Suite B-101  
Tempe, AZ 85281  
Ph 602.753.5222 www.upwardarchitects.com

# MATERIAL/COLOR SCHEDULE

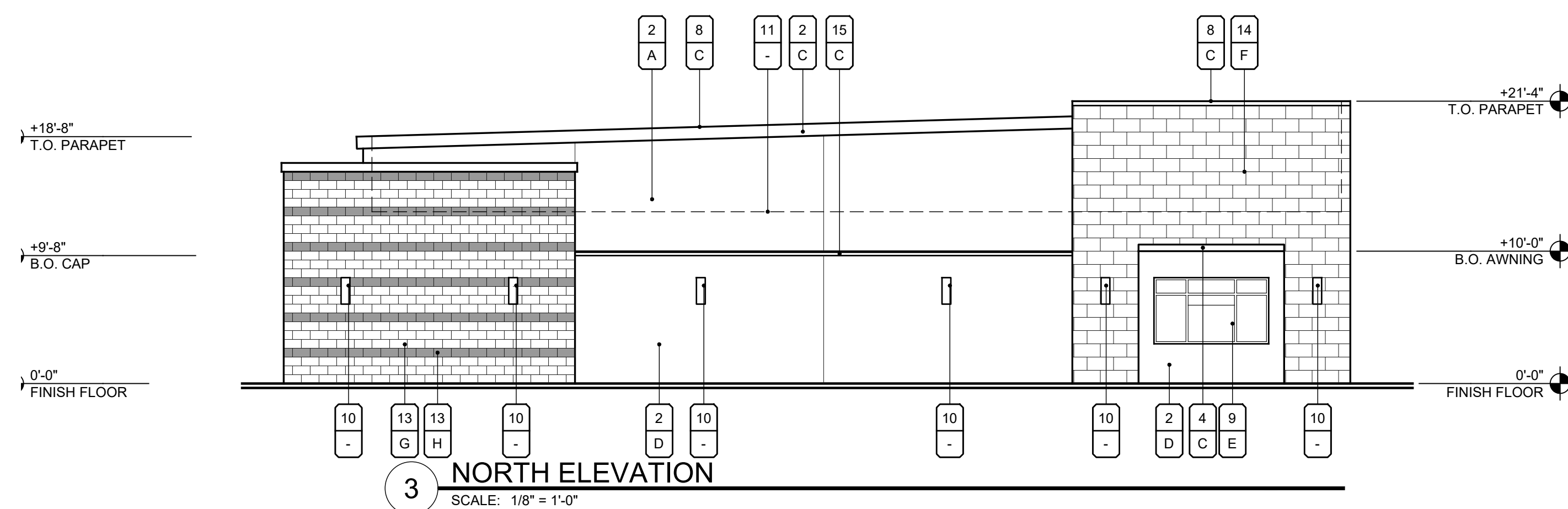
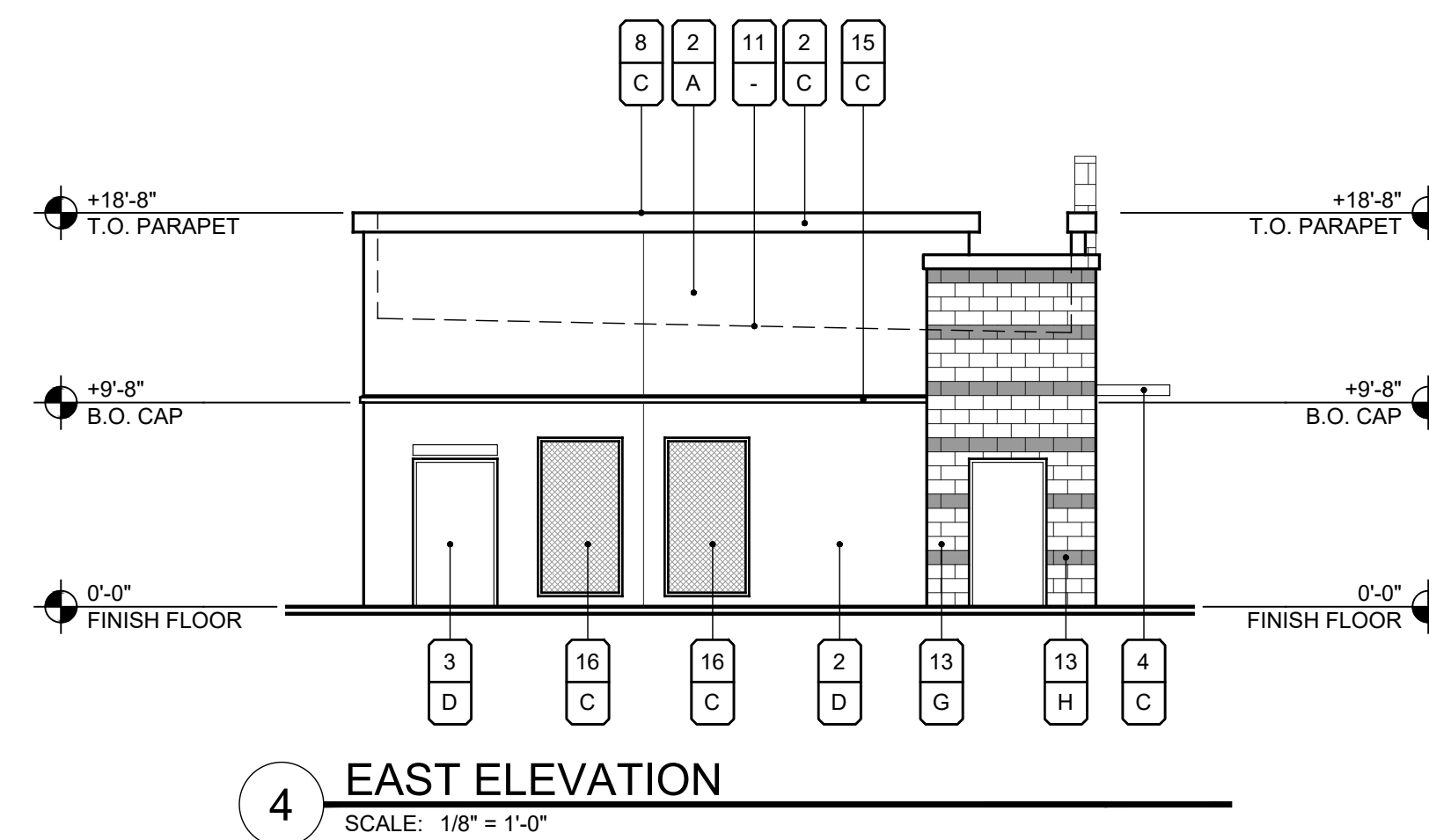
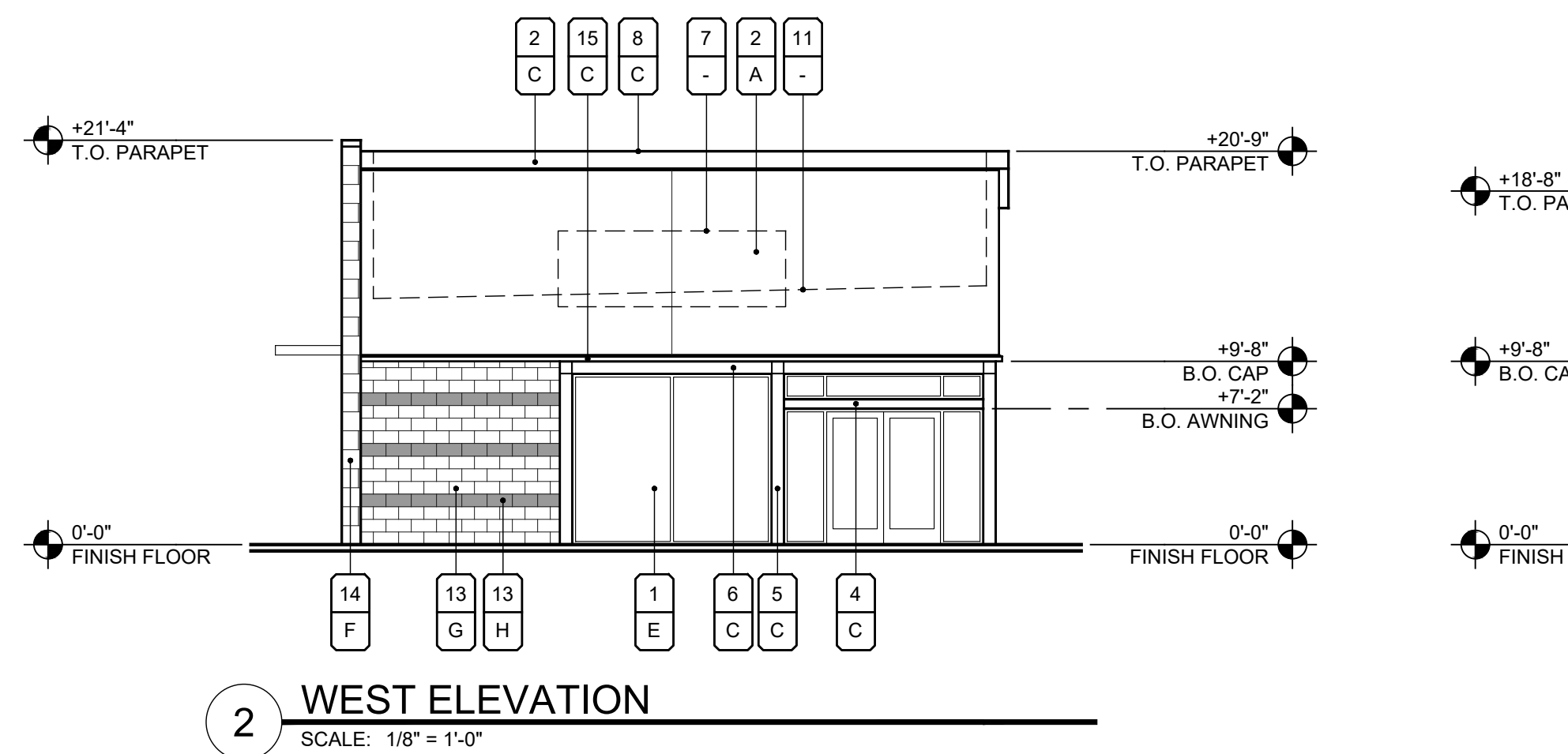
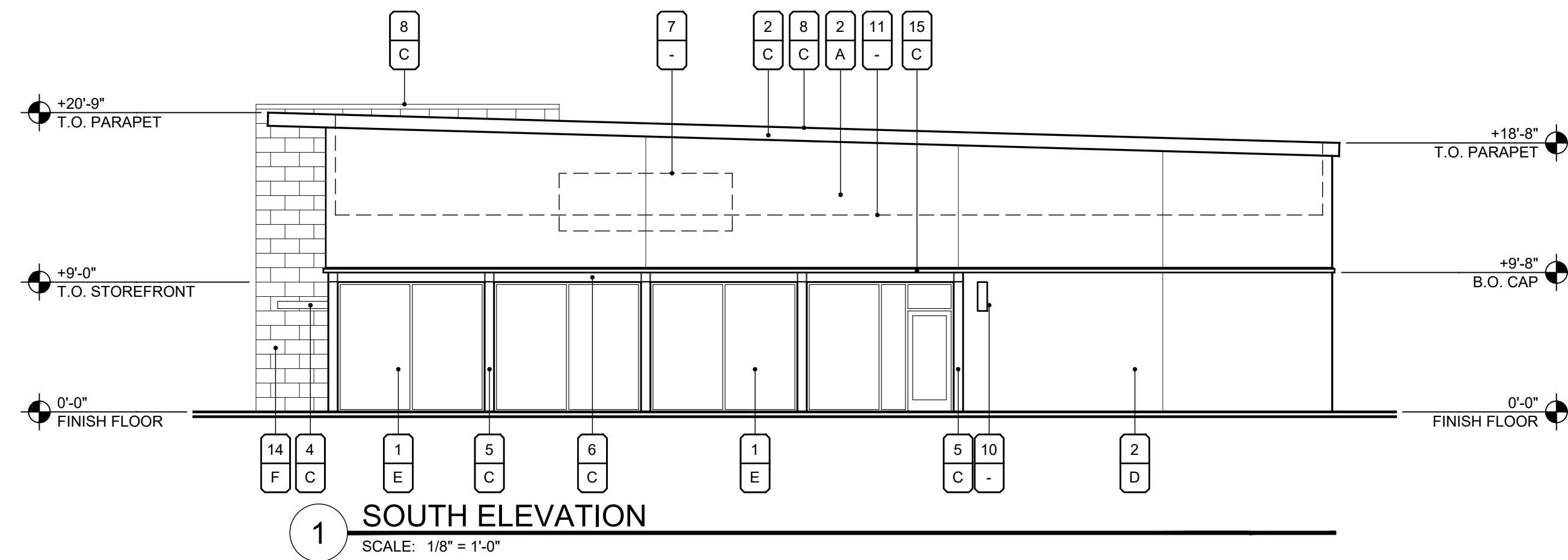
## MATERIALS

1. ANODIZED ALUMINUM STOREFRONT FRAME WITH 1" INSULATED LOW-E, CLEAR GLAZING
2. INTEGRAL COLOR E.I.F.S. - FINE SAND TEXTURE
3. HOLLOW METAL DOOR AND FRAME - PAINTED
4. METAL AWNING
5. STEEL COLUMN - PAINTED
6. STEEL BEAM - PAINTED
7. FUTURE TENANT SIGNAGE UNDER SEPARATE PERMIT AND SUBMITTAL
8. 22 GA PRE-FINISHED METAL CAP FLASHING
9. AUTOMATIC DRIVE-THRU WINDOW
10. LIGHT FIXTURE - DARK BRONZE
11. ROOF LINE BEYOND SHOWN DASHED
12. HVAC EQUIPMENT BEYOND SHOWN DASHED
13. CMU VENEER
14. STONE VENEER
15. E.I.F.S. ACCENT BAND
16. GREEN SCREEN

## COLORS

- by Dunn Edwards (or Equal):
- A. DEC765 - "BONE"
  - B. DEC717 - "BAKED POTATO"
  - C. DEC756 - "WEATHERED BROWN"
  - D. DEC795 - "GRAY PEARL"
- by Eldorado Stone (or Equal):
- F. Thin Stone Veneer Marquee 24 - "Dove Tail"
- by Echelon / Trenwyth Masonry Blocks:
- G. Trendstone - "Pebble Beach"
  - H. Mesastone - "Huntington Gray"
- Aluminum Storefront:
- E. "DARK BRONZE ANODIZED"

MATERIAL   
FINISH



# EXTERIOR ELEVATIONS

S.W.C. SIGNAL BUTTE RD. AND RUBIDIUM AVE.  
MESA, AZ



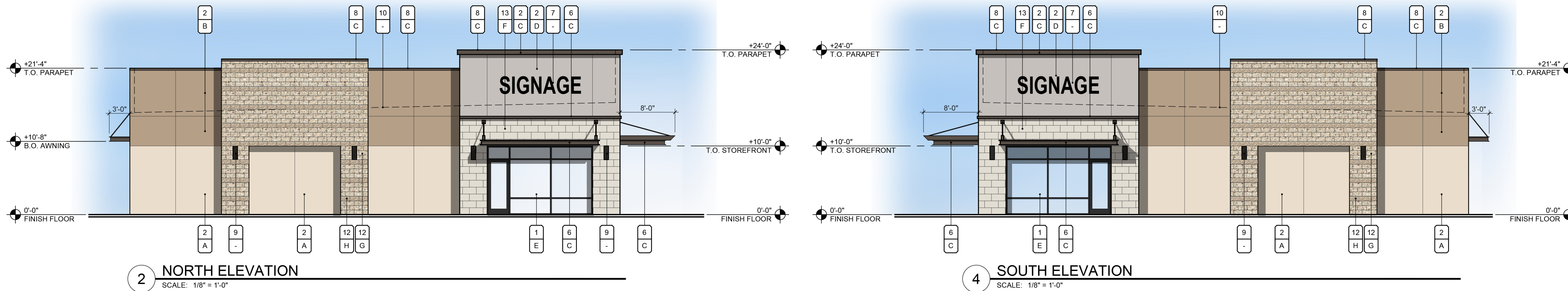
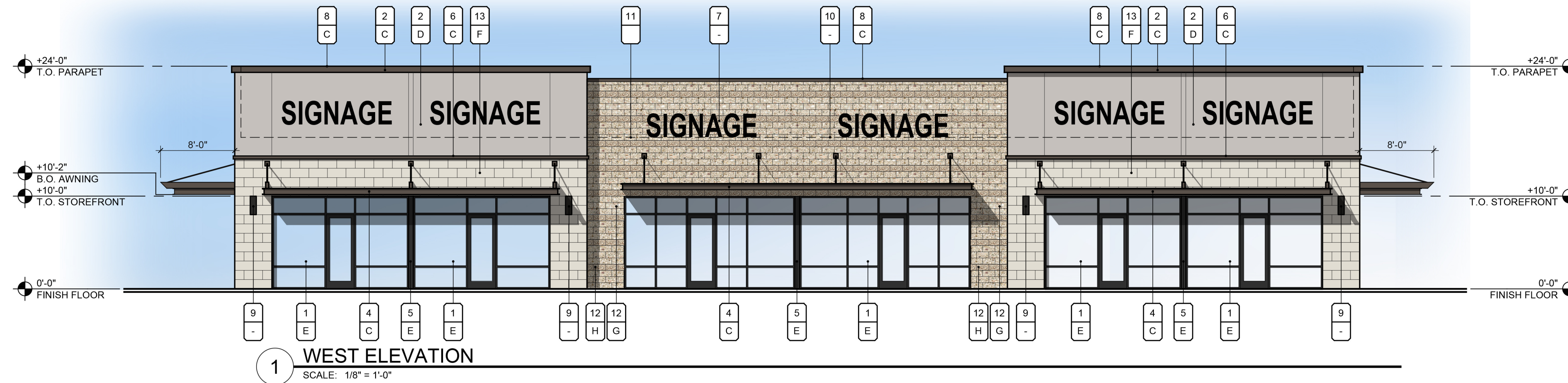
1155 W. Rio Salado Parkway, Suite B-101  
Tempe, AZ 85281  
Ph 602.753.5222 www.upwardarchitects.com

# MATERIAL/COLOR SCHEDULE

- MATERIALS**
1. ANODIZED ALUMINUM STOREFRONT FRAME WITH 1" INSULATED LOW-E, CLEAR GLAZING
  2. INTEGRAL COLOR E.I.F.S. - FINE SAND TEXTURE
  3. HOLLOW METAL DOOR AND FRAME - PAINTED
  4. METAL AWNING
  5. STEEL COLUMN - PAINTED
  6. E.I.F.S. ACCENT BAND
  7. FUTURE TENANT SIGNAGE UNDER SEPARATE PERMIT AND SUBMITTAL
  8. 22 GA PRE-FINISHED METAL CAP FLASHING
  9. LIGHT FIXTURE - DARK BRONZE
  10. ROOF LINE BEYOND SHOWN DASHED
  11. HVAC EQUIPMENT BEYOND SHOWN DASHED
  12. INTEGRALLY COLORED CMU - STACKED BOND
  13. STONE VENEER
  14. TINTED GLAZING

- COLORS**
- by Dunn Edwards (or Equal):
- A. DEC765 - "BONE"
  - B. DEC717 - "BAKED POTATO"
  - C. DEC756 - "WEATHERED BROWN"
  - D. DEC795 - "GRAY PEARL"
- by Eldorado Stone (or Equal):
- F. Thin Stone Veneer Marquee 24 - "Dove Tail"
- by Echelon / Trenwyth Masonry Blocks:
- G. Trendstone - "Pebble Beach"
  - H. Mesastone - "Huntington Gray"
- Aluminum Storefront:
- E. "DARK BRONZE ANODIZED"

MATERIAL	FINISH
A.	X
B.	X
C.	X
D.	X
E.	X
F.	X
G.	X
H.	X



# EXTERIOR ELEVATIONS

S.W.C. SIGNAL BUTTE RD. AND RUBIDIUM AVE.  
MESA, AZ



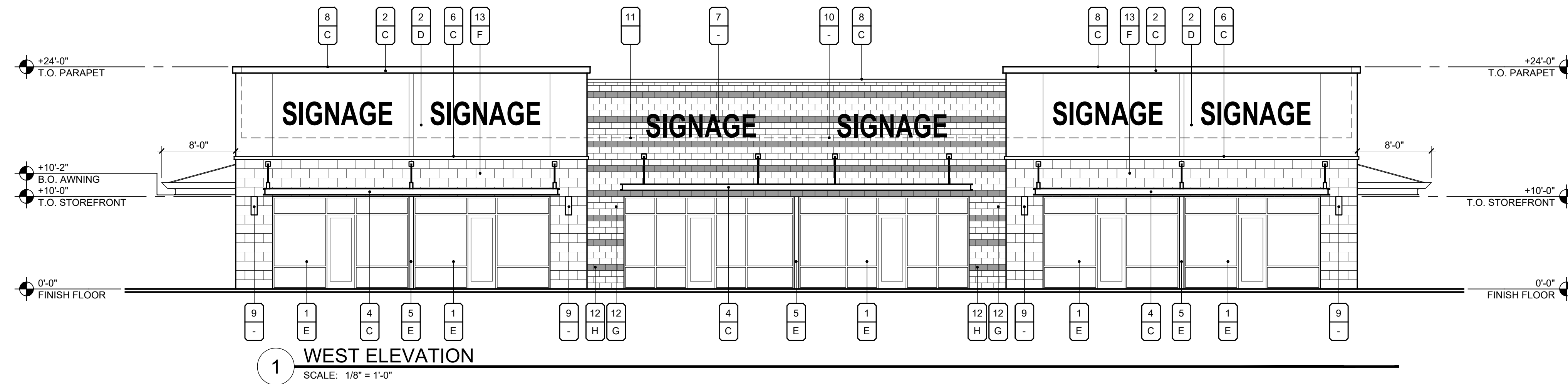
1155 W. Rio Salado Parkway, Suite B-101  
Tempe, AZ 85281  
Ph 602.753.5222 www.upwardarchitects.com

# MATERIAL/COLOR SCHEDULE

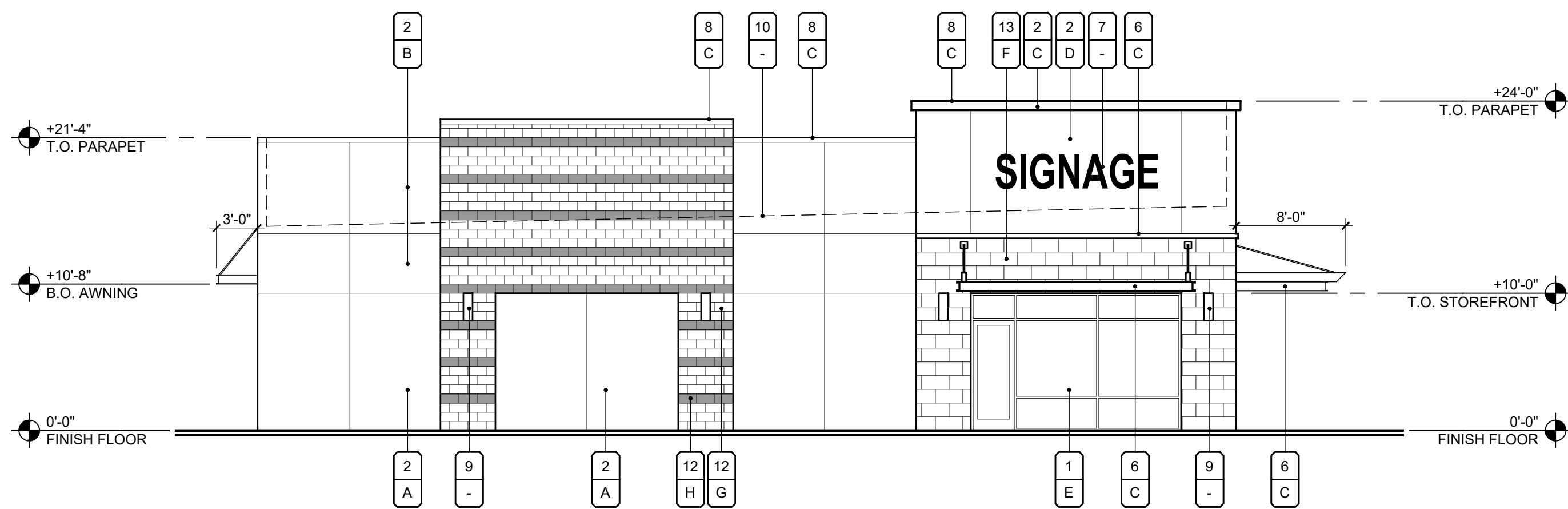
- MATERIALS**
1. ANODIZED ALUMINUM STOREFRONT FRAME WITH 1" INSULATED LOW-E, CLEAR GLAZING
  2. INTEGRAL COLOR E.I.F.S. - FINE SAND TEXTURE
  3. HOLLOW METAL DOOR AND FRAME - PAINTED
  4. METAL AWNING
  5. STEEL COLUMN - PAINTED
  6. E.I.F.S. ACCENT BAND
  7. FUTURE TENANT SIGNAGE UNDER SEPARATE PERMIT AND SUBMITTAL
  8. 22 GA PRE-FINISHED METAL CAP FLASHING
  9. LIGHT FIXTURE - DARK BRONZE
  10. ROOF LINE BEYOND SHOWN DASHED
  11. HVAC EQUIPMENT BEYOND SHOWN DASHED
  12. INTEGRALLY COLORED CMU - STACKED BOND
  13. STONE VENEER
  14. TINTED GLAZING

- COLORS**
- by Dunn Edwards (or Equal):
- A. DEC765 - "BONE"
  - B. DEC717 - "BAKED POTATO"
  - C. DEC756 - "WEATHERED BROWN"
  - D. DEC795 - "GRAY PEARL"
- by Eldorado Stone (or Equal):
- F. Thin Stone Veneer Marquee 24 - "Dove Tail"
- by Echelon / Trenwyth Masonry Blocks:
- G. Trendstone - "Pebble Beach"
  - H. Mesastone - "Huntington Gray"
- Aluminum Storefront:
- E. "DARK BRONZE ANODIZED"

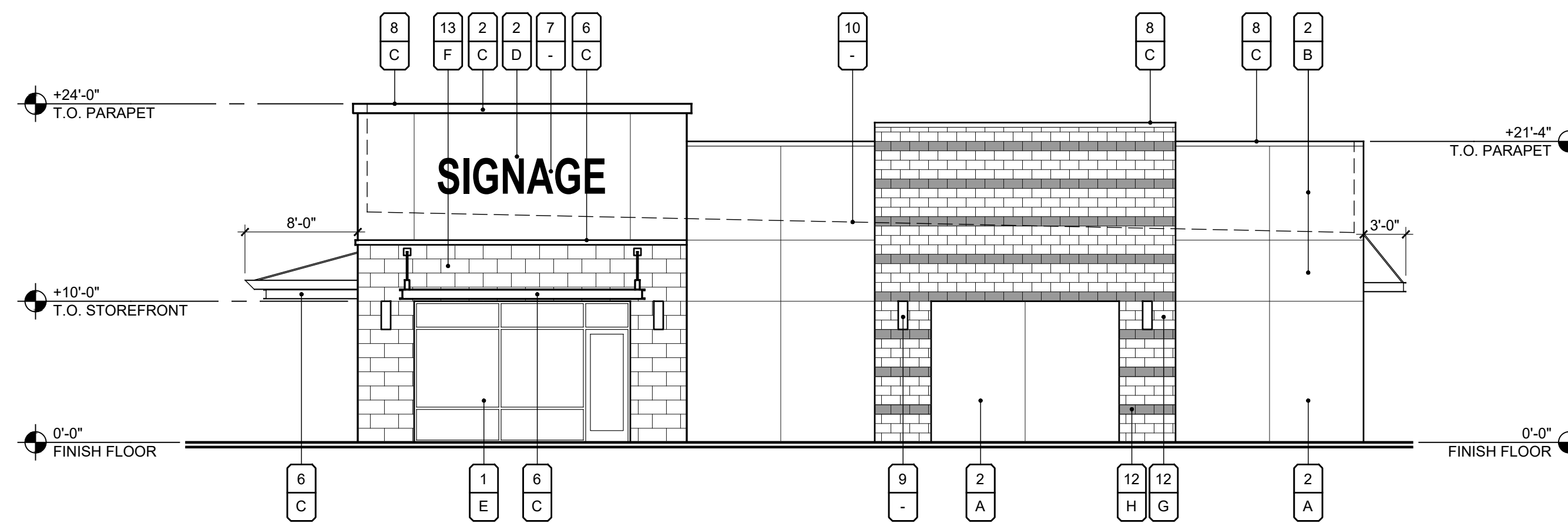
MATERIAL	FINISH
A.	
B.	
C.	
D.	
E.	
F.	
G.	
H.	



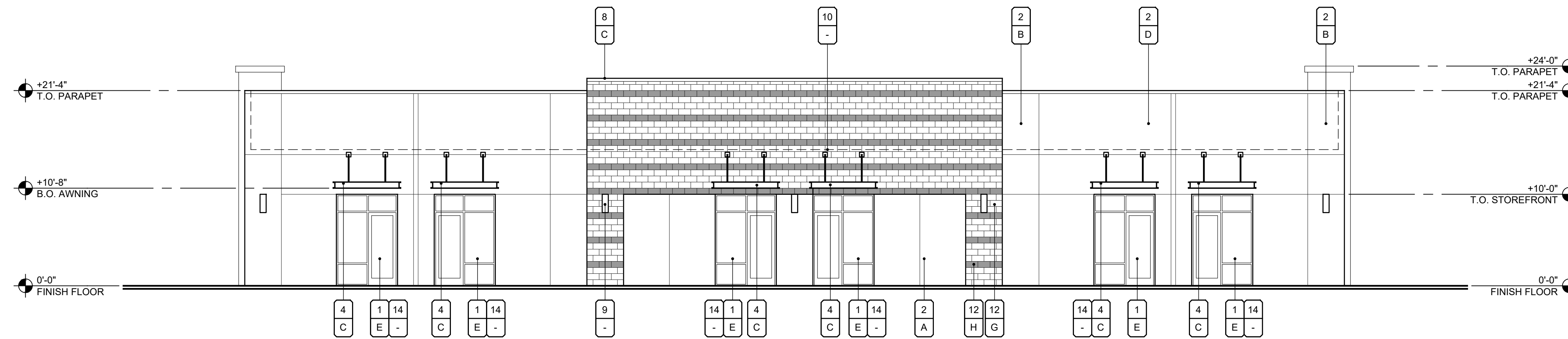
1 WEST ELEVATION  
SCALE: 1/8" = 1'-0"



2 NORTH ELEVATION  
SCALE: 1/8" = 1'-0"



4 SOUTH ELEVATION  
SCALE: 1/8" = 1'-0"



3 EAST ELEVATION  
SCALE: 1/8" = 1'-0"

## EXTERIOR ELEVATIONS

S.W.C. SIGNAL BUTTE RD. AND RUBIDIUM AVE.  
MESA, AZ



1155 W. Rio Salado Parkway, Suite B-101  
Tempe, AZ 85281  
Ph 602.753.5222 www.upwardarchitects.com