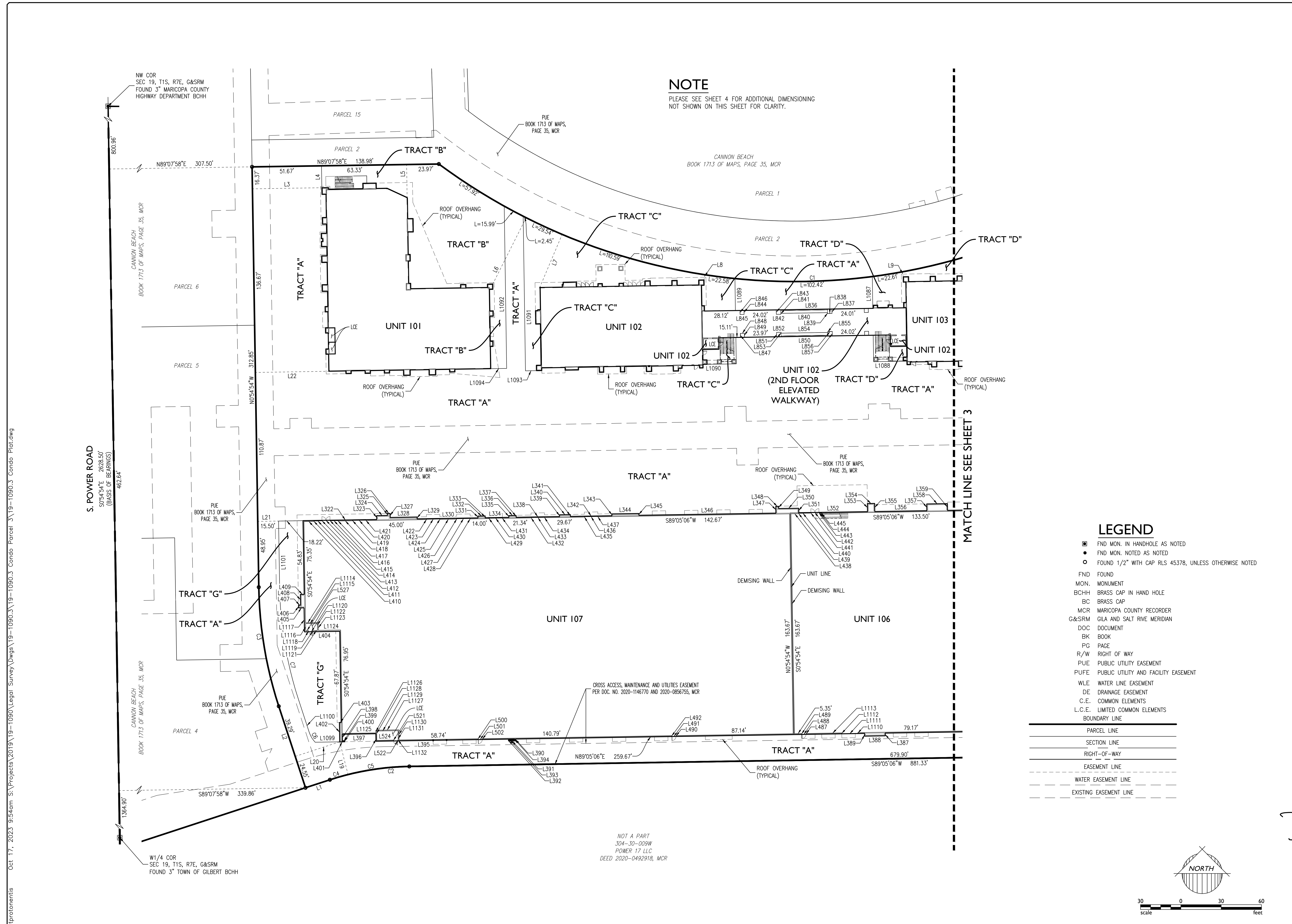




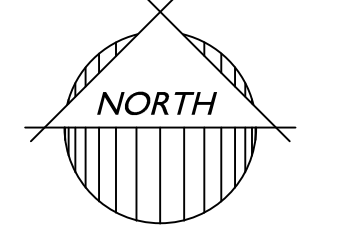
tprotontrents Oct 17, 2023 9:54am S:\Projects\2019-1090\Legal Surveys\Drawings\19-1090.3 Condo Parcel 3\19-1090.3 Condo Plat.dwg



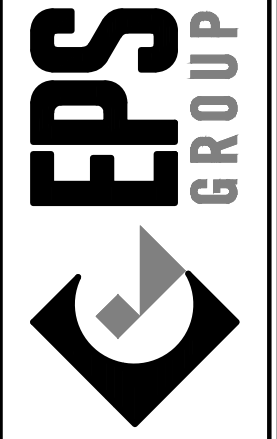
**NOTE**  
PLEASE SEE SHEET 4 FOR ADDITIONAL DIMENSIONING NOT SHOWN ON THIS SHEET FOR CLARITY.

LEGEND	
●	FND MON. IN HANDHOLE AS NOTED
○	FND MON. NOTED AS NOTED
○	FOUND 1/2" WITH CAP RLS 45378, UNLESS OTHERWISE NOTED
FND	FOUND
MON.	MONUMENT
BCHH	BRASS CAP IN HAND HOLE
BC	BRASS CAP
MCR	MARICOPA COUNTY RECORDER
G&SRM	GILA AND SALT RIVE MERIDIAN
DOC	DOCUMENT
BK	BOOK
PG	PAGE
R/W	RIGHT OF WAY
PUE	PUBLIC UTILITY EASEMENT
PUEF	PUBLIC UTILITY AND FACILITY EASEMENT
WLE	WATER LINE EASEMENT
DE	DRAINAGE EASEMENT
C.E.	COMMON ELEMENTS
L.C.E.	LIMITED COMMON ELEMENTS
BOUNDARY LINE	
_____	PARCEL LINE
_____	SECTION LINE
_____	RIGHT-OF-WAY
_____	EASEMENT LINE
_____	WATER EASEMENT LINE
_____	EXISTING EASEMENT LINE

NOT A PART  
304-30-009W  
POWER 17 LLC  
DEED 2020-0492918, MCR



1130 N. Alma School Rd, Suite 120  
Mesa, AZ 85201  
T:480.503.2250 | F:480.503.2258  
www.epsgrp.com



**CANNON BEACH INDUSTRIAL CONDO**  
**FINAL PLAT**

Revisions:	



Drawn by: TJP  
Reviewed by: RAJ



**NOTE**

PLEASE SEE SHEET 5 FOR ADDITIONAL DIMENSIONING NOT SHOWN ON THIS SHEET FOR CLARITY.

CANNON BEACH  
BOOK 1713 OF MAPS, PAGE 35, MCR

PUE  
BOOK 1713 OF MAPS,  
PAGE 35, MCR

PARCEL 2

TRACT "E"

TRACT "A"

PARCEL 1

PARCEL 2

TRACT "E"

TRACT "D"

UNIT 103

TRACT "D"

UNIT 104

TRACT "A"

ROOF OVERHANG  
(TYPICAL)

PUE  
BOOK 1713 OF MAPS,  
PAGE 35, MCR

PARCEL 2

TRACT "A"

ROOF OVERHANG  
(TYPICAL)

TRACT "A"

UNIT 106

UNIT 105

TRACT "F"

TRACT "A"

TRACT "A"

CROSS ACCESS, MAINTENANCE AND UTILITIES EASEMENT  
PER DOC. NO. 2020-1146770 AND 2020-0856755, MCR

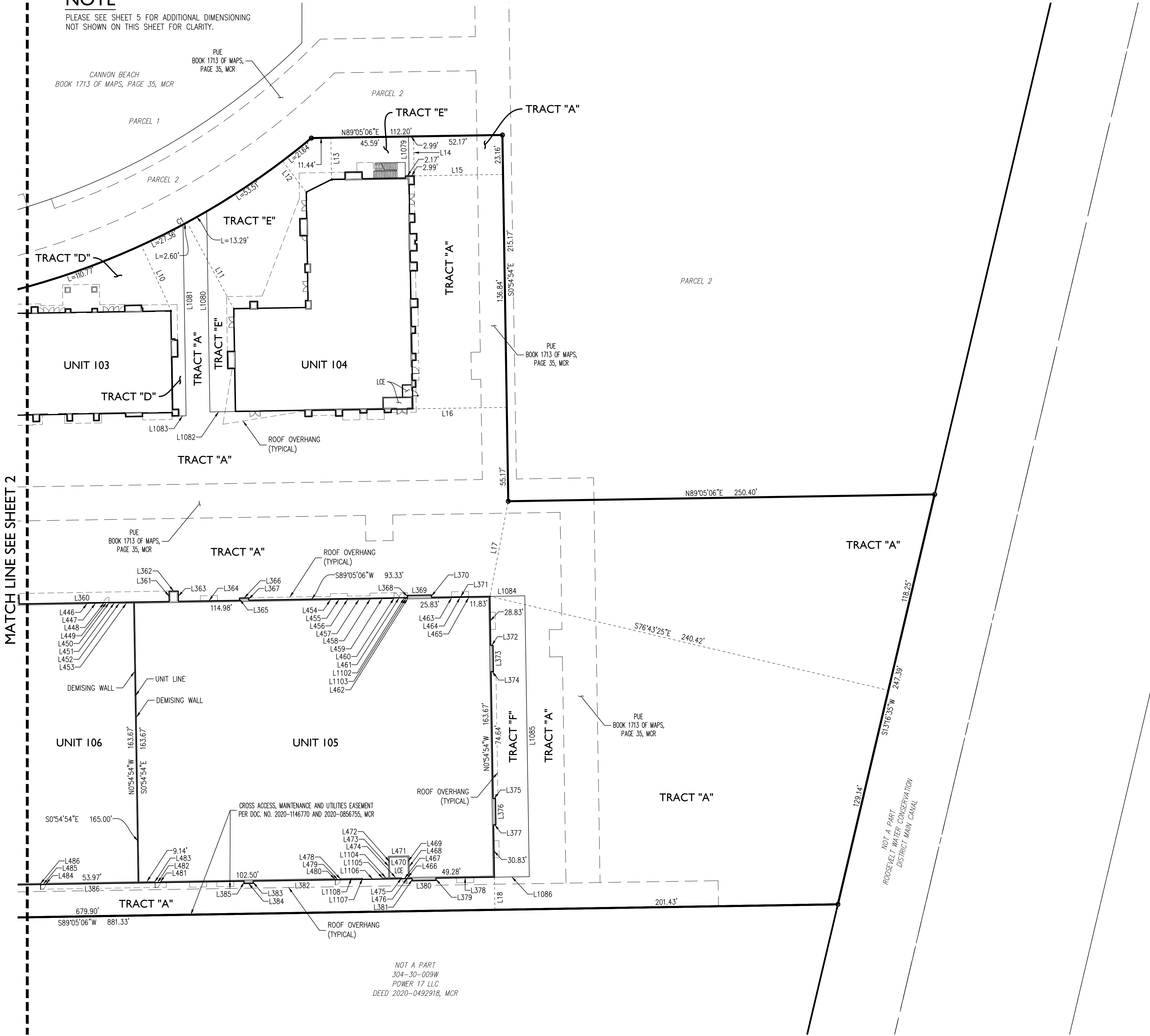
PUE  
BOOK 1713 OF MAPS,  
PAGE 35, MCR

NOT A PART  
ROOSEVELT WATER CONSERVATION  
DISTRICT MAIN CANAL

NOT A PART  
304-30-009W  
POWER 17 LLC  
DEED 2020-0492918, MCR

MATCH LINE SEE SHEET 2

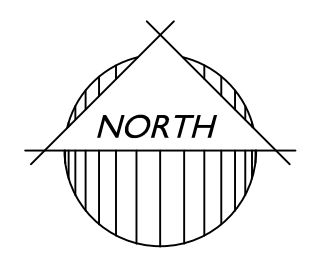
tprotoneit Oct 17, 2023 9:43am S:\Projects\2019\19-1090\Legal Survey\Drawings\19-1090.3 Condo Parcel 3\19-1090.3 Condo Plat.dwg



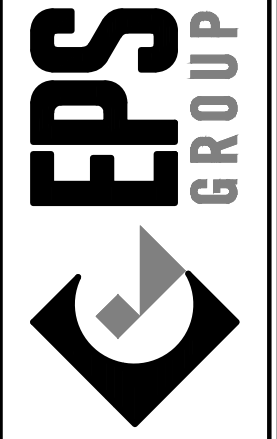
**LEGEND**

- FND MON. IN HANDHOLE AS NOTED
- FND MON. NOTED AS NOTED
- FOUND 1/2" WITH CAP RLS 45378, UNLESS OTHERWISE NOTED
- FND FOUND
- MON. MONUMENT
- BCHH BRASS CAP IN HAND HOLE
- BC BRASS CAP
- MCR MARICOPA COUNTY RECORDER
- G&SRM GILA AND SALT RIVE MERIDIAN
- DOC DOCUMENT
- BK BOOK
- PG PAGE
- R/W RIGHT OF WAY
- PUE PUBLIC UTILITY EASEMENT
- PUEF PUBLIC UTILITY AND FACILITY EASEMENT
- WLE WATER LINE EASEMENT
- DE DRAINAGE EASEMENT
- C.E. COMMON ELEMENTS
- L.C.E. LIMITED COMMON ELEMENTS

	PARCEL LINE
	SECTION LINE
	RIGHT-OF-WAY
	EASEMENT LINE
	WATER EASEMENT LINE
	EXISTING EASEMENT LINE



1130 N. Alma School Rd, Suite 120  
Mesa, AZ 85201  
T:480.503.2250 | F:480.503.2258  
www.epsgroupinc.com



Project: CANNON BEACH INDUSTRIAL CONDO  
MESA, ARIZONA

FINAL PLAT

Revisions:

No.	Description	By	Date



Drawn by: TJP  
Reviewed by: RAJ



Job No.  
**19-1090.3**  
FP03  
Sheet No.  
**3**  
of 7

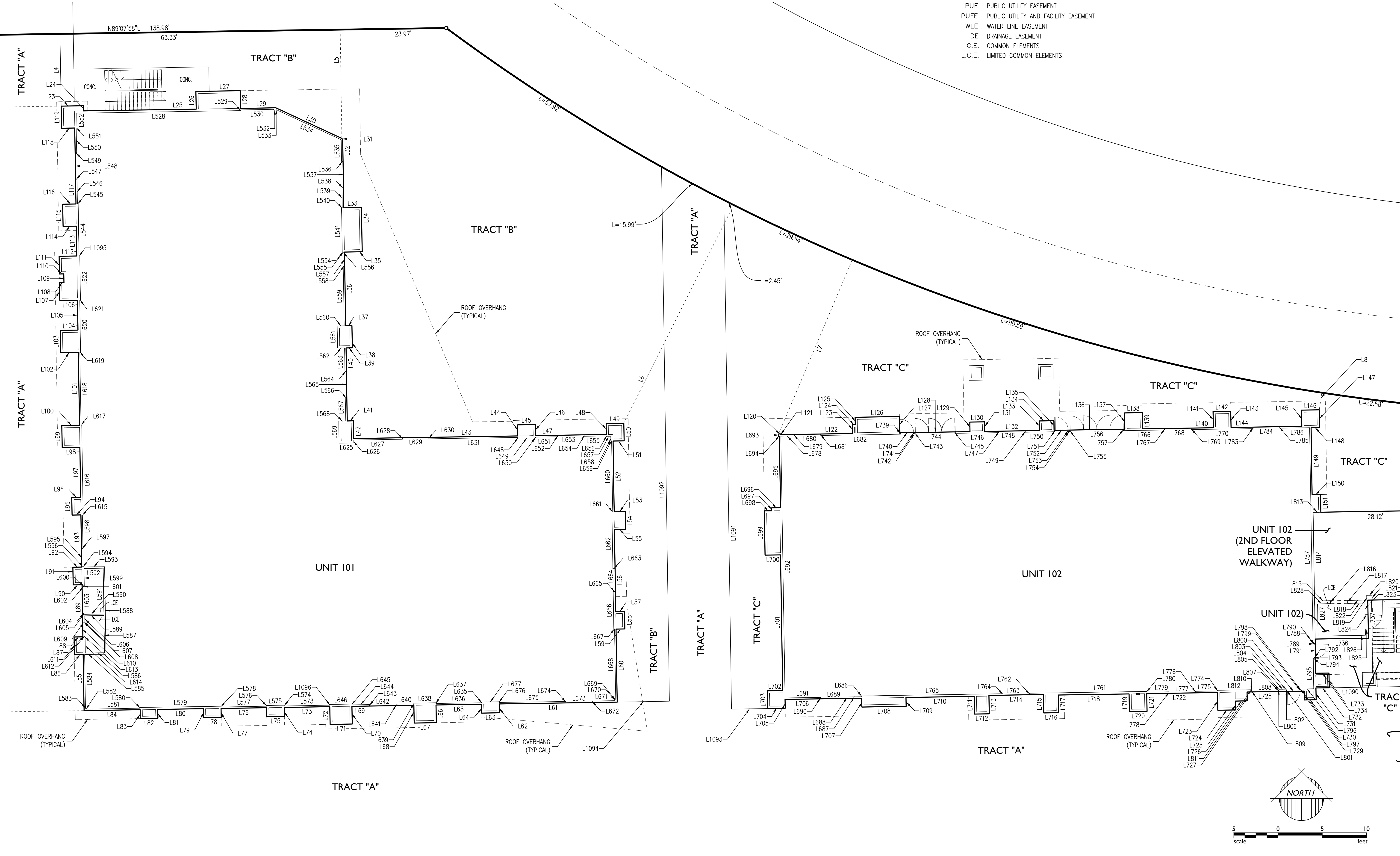
tprotorents Oct 17, 2023 9:40am S:\Projects\2019\19-1090\Legal Survey\Draws\19-1090.3\19-1090.3 Condo Plat.dwg

### NOTE

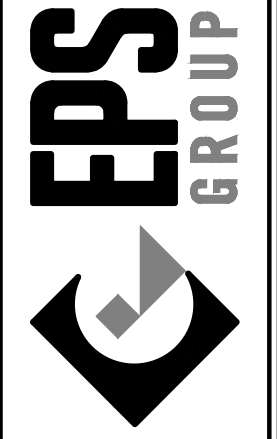
PLEASE SEE SHEET 2 FOR ADDITIONAL DIMENSIONING NOT SHOWN ON THIS SHEET FOR CLARITY.

### LEGEND

- FND MON. IN HANDHOLE AS NOTED
  - FND MON. NOTED AS NOTED
  - FOUND 1/2" WITH CAP RLS 45378, UNLESS OTHERWISE NOTED
  - FND FOUND
  - MON. MONUMENT
  - BCHH BRASS CAP IN HAND HOLE
  - BC BRASS CAP
  - MCR MARICOPA COUNTY RECORDER
  - G&SRM GILA AND SALT RIVE MERIDIAN
  - DOC DOCUMENT
  - BK BOOK
  - PG PAGE
  - R/W RIGHT OF WAY
  - PUE PUBLIC UTILITY EASEMENT
  - PUEF PUBLIC UTILITY AND FACILITY EASEMENT
  - WLE WATER LINE EASEMENT
  - DE DRAINAGE EASEMENT
  - C.E. COMMON ELEMENTS
  - L.C.E. LIMITED COMMON ELEMENTS
- |                        |
|------------------------|
| BOUNDARY LINE          |
| PARCEL LINE            |
| SECTION LINE           |
| RIGHT-OF-WAY           |
| EASEMENT LINE          |
| WATER EASEMENT LINE    |
| EXISTING EASEMENT LINE |



1130 N. Alma School Rd, Suite 120  
Mesa, AZ 85201  
T:480.503.2250 | F:480.503.2258  
www.epsgroupinc.com



**CANNON BEACH INDUSTRIAL CONDO**  
MESA, ARIZONA  
**FINAL PLAT**

Project: \_\_\_\_\_

Revisions:	

Call or text me for a full working copy before final recording.

**ARIZONA**  
REGISTERED LAND SURVEYOR  
37495  
ROBERT A. JOHNSON  
No. 2019-00000101  
Exp. 12/31/2024

Drawn by: TJP  
Reviewed by: RAJ

Job No.  
**19-1090.3**  
FP04  
Sheet No.  
**4**  
of 7

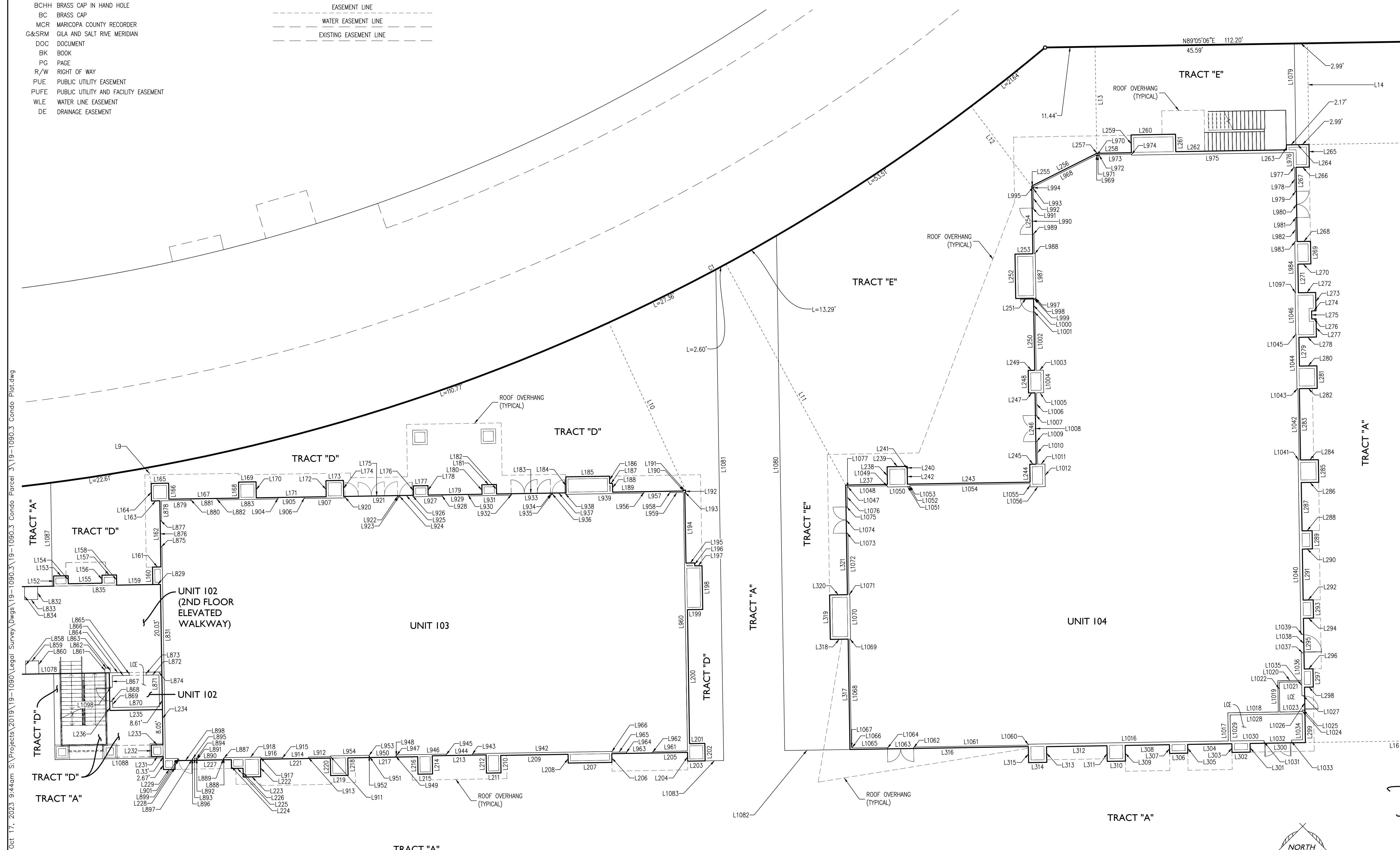
# LEGEND

- FND MON. IN HANDHOLE AS NOTED
- FND MON. NOTED AS NOTED
- FOUND 1/2" WITH CAP RLS 45378, UNLESS OTHERWISE NOTED
- FND FOUND
- MON. MONUMENT
- BCHH BRASS CAP IN HAND HOLE
- BC BRASS CAP
- MCR MARICOPA COUNTY RECORDER
- G&SRM GILA AND SALT RIVE MERIDIAN
- DOC DOCUMENT
- BK BOOK
- PG PAGE
- R/W RIGHT OF WAY
- PUE PUBLIC UTILITY EASEMENT
- PUEF PUBLIC UTILITY AND FACILITY EASEMENT
- WLE WATER LINE EASEMENT
- DE DRAINAGE EASEMENT

- BOUNDARY LINE
- PARCEL LINE
- SECTION LINE
- RIGHT-OF-WAY
- EASEMENT LINE
- WATER EASEMENT LINE
- EXISTING EASEMENT LINE

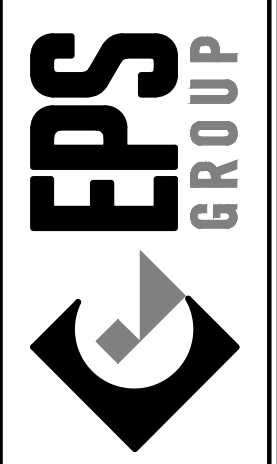
# NOTE

PLEASE SEE SHEET 3 FOR ADDITIONAL DIMENSIONING NOT SHOWN ON THIS SHEET FOR CLARITY.



tprotorents Oct 17, 2023 9:44am S:\Projects\2019\19-1090\Legal Survey\Drawings\19-1090.3\19-1090.3 Condo Plat.dwg

1130 N. Alma School Rd, Suite 120  
Mesa, AZ 85201  
T:480.503.2250 | F:480.503.2258  
www.epsgroupinc.com



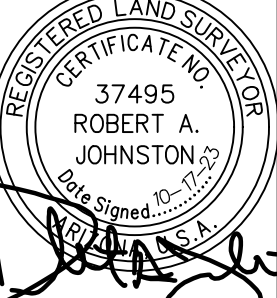
## CANNON BEACH INDUSTRIAL CONDO FINAL PLAT

Project:

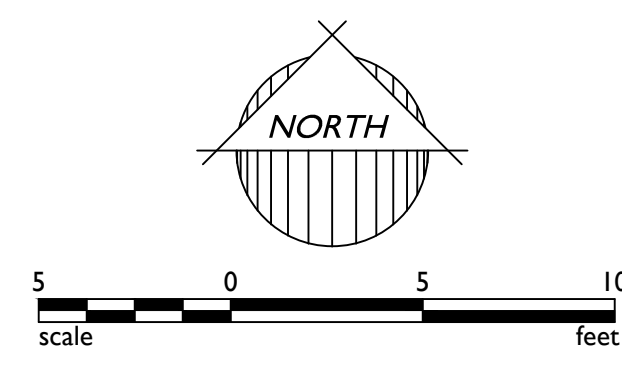
Revisions:



Drawn by: TJP  
Reviewed by: RAJ



Job No.  
**19-1090.3**  
PP05  
Sheet No.  
**5 of 7**



LINE TABLE with columns: LINE, BEARING, LENGTH. Rows 1-68.

LINE TABLE with columns: LINE, BEARING, LENGTH. Rows 69-136.

LINE TABLE with columns: LINE, BEARING, LENGTH. Rows 137-204.

LINE TABLE with columns: LINE, BEARING, LENGTH. Rows 205-274.

LINE TABLE with columns: LINE, BEARING, LENGTH. Rows 275-344.

LINE TABLE with columns: LINE, BEARING, LENGTH. Rows 345-414.

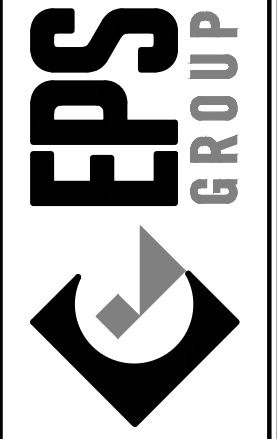
LINE TABLE with columns: LINE, BEARING, LENGTH. Rows 415-484.

LINE TABLE with columns: LINE, BEARING, LENGTH. Rows 485-554.

LINE TABLE with columns: LINE, BEARING, LENGTH. Rows 555-624.

LINE TABLE with columns: LINE, BEARING, LENGTH. Rows 625-694.

Project: CANNON BEACH INDUSTRIAL CONDO, FINAL PLAT, Revisions, ARIZONA 811, Drawn by: TJP, Reviewed by: RAJ, 19-1090.3, FP06, Sheet No. 6 of 7.



CANNON BEACH INDUSTRIAL CONDO, MESA, ARIZONA, FINAL PLAT

Revisions:

Table with 2 columns: Description, Date/Initials.



Drawn by: TJP, Reviewed by: RAJ



Job No. 19-1090.3, FP06, Sheet No. 6 of 7

LINE TABLE with columns: LINE, BEARING, LENGTH. Rows 1-120.

LINE TABLE with columns: LINE, BEARING, LENGTH. Rows 121-240.

LINE TABLE with columns: LINE, BEARING, LENGTH. Rows 241-360.

LINE TABLE with columns: LINE, BEARING, LENGTH. Rows 361-480.

LINE TABLE with columns: LINE, BEARING, LENGTH. Rows 481-600.

LINE TABLE with columns: LINE, BEARING, LENGTH. Rows 601-720.

CURVE TABLE with columns: CURVE, LENGTH, RADIUS, DELTA, TANGENT, CHORD, CHORD BRG. Rows 1-7.

UNIT AREA TABLE with columns: UNIT #, AREA (SF), AREA (AC). Rows 101-107.

TRACT USE TABLE with columns: TRACT, USE, AREA (SF), AREA (AC). Rows A-G.

Vertical sidebar containing project name 'CANNON BEACH INDUSTRIAL CONDO', company logo 'EPS GROUP', 'FINAL PLAT', and professional seals.