

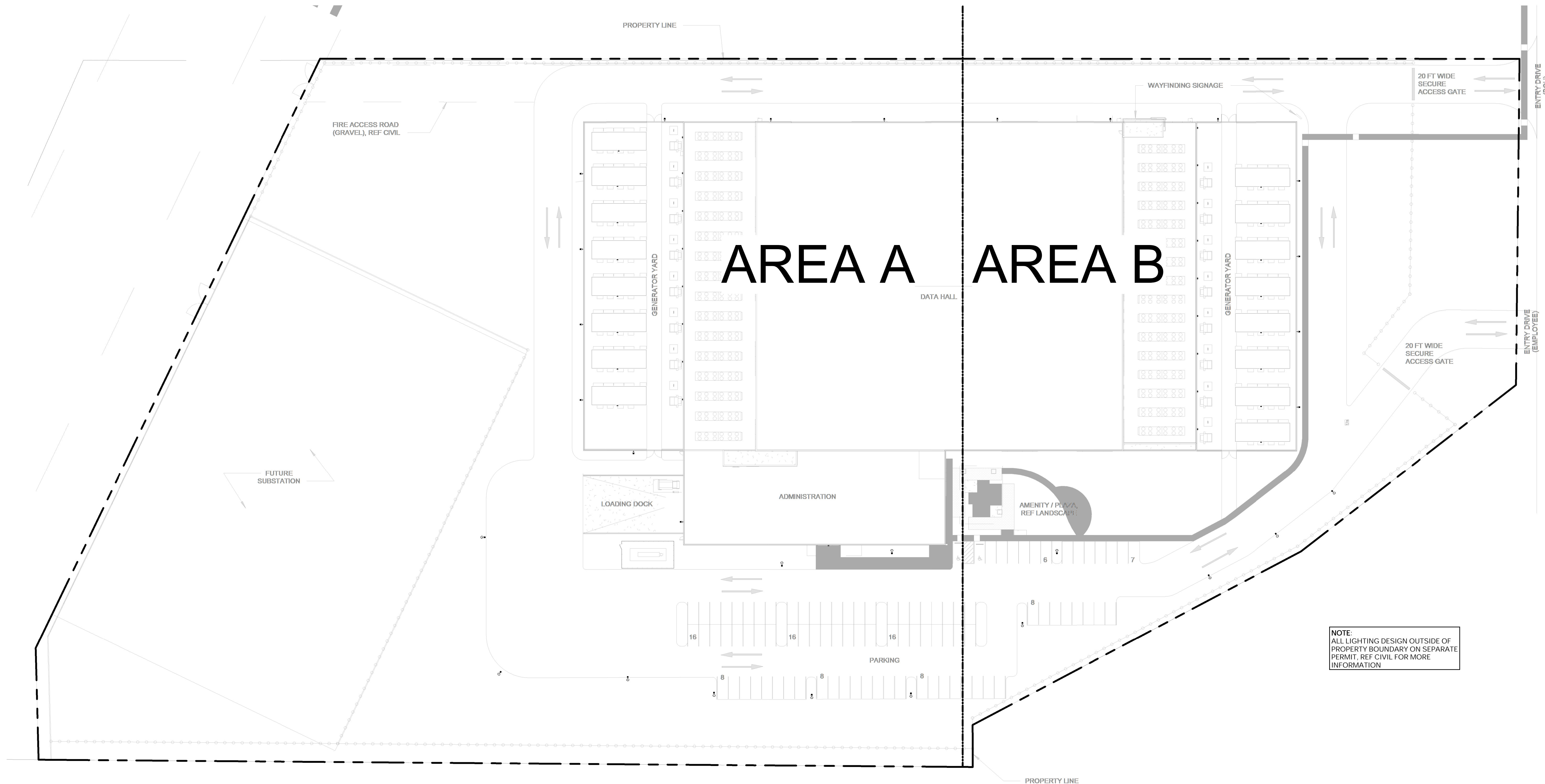
OWNER
 EDGED
 30 OLD KINGS HIGHWAY SOUTH, SUITE 1005
 DARIEN, CT 06820

ARCHITECT
 HKS, INC.
 350 N SAINT PAUL ST, SUITE 100
 DALLAS, TX 75201-4240

STRUCTURE
 HKS, INC.
 350 N SAINT PAUL ST, SUITE 100
 DALLAS, TX 75201-4240

MEP/FP
 TELIOS CORPORATION
 146 PAYNE STREET
 DALLAS, TX 75207

CIVIL ENGINEER
 HILGART WILSON
 2141 E. HIGHLAND AVE. STE. 275
 PHOENIX, AZ 85016



NOTE:
 ALL LIGHTING DESIGN OUTSIDE OF
 PROPERTY BOUNDARY ON SEPARATE
 PERMIT. REF CIVIL FOR MORE
 INFORMATION

INTERIM REVIEW ONLY

These documents are incomplete, and
 are released for interim review only and
 are not intended for regulatory approval,
 permit, or construction purposes.

Architect: _____
 Arch. Reg. No.: _____
 Date: _____

REVISION

NO.	DESCRIPTION	DATE

HKS PROJECT NUMBER
26033.000
 DATE
09/25/2023
 ISSUE
DESIGN REVIEW

SHEET TITLE
**PHOTOMETRICS -
 OVERALL**

SHEET NO.
SP.17

① SITE LIGHTING - PHOTOMETRIC -
 OVERALL
 1" = 40'-0"



Ⓐ DSX1
 1/8" = 1'-0"

Ⓑ DSXW1
 1/8" = 1'-0"

Type Mark	Manufacturer	Model	Description
A1	LITHONIA LIGHTING	DSX1 LED P1 40K 70CRI BLC3 MVOLT RPA DDBXD	LED AREA LUMINAIRE, D-SERIES SIZE 1, POLE MOUNTED
A2	LITHONIA LIGHTING	DSX1 LED P1 40K 70CRI BLC3 MVOLT WBA DDBXD	LED AREA LUMINAIRE, D-SERIES SIZE 1, WALL MOUNTED
A3	LITHONIA LIGHTING	DSX1 LED P2 40K 70CRI T2M MVOLT RPA DDBXD	LED AREA LUMINAIRE, D-SERIES SIZE 1, POLE MOUNTED
A4	LITHONIA LIGHTING	DSX0 LED P1 40K 70CRI T3LG MVOLT WBA DDBXD	LED AREA LUMINAIRE, D-SERIES SIZE 0, WALL MOUNTED
B1	LITHONIA LIGHTING	DSXW1 LED 10C 350 40K T3S MVOLT DDBXD	LED WALL LUMINAIRE, D-SERIES SIZE 1
B2	LITHONIA LIGHTING	DSXW1 LED 10C 350 40K T2M MVOLT DDBXD	LED WALL LUMINAIRE, D-SERIES SIZE 1



OWNER
 EDGED
 30 OLD KINGS HIGHWAY SOUTH, SUITE 1005
 DARIEN, CT 06820

ARCHITECT
 HKS, INC.
 350 N SAINT PAUL ST, SUITE 100
 DALLAS, TX 75201-4240

STRUCTURE
 HKS, INC.
 350 N SAINT PAUL ST, SUITE 100
 DALLAS, TX 75201-4240

MEP/FP
 TELIOS CORPORATION
 146 PAYNE, STREET
 DALLAS, TX 75207

CIVIL ENGINEER
 HILGART WILSON
 2141 E. HIGHLAND AVE. STE. 275
 PHOENIX, AZ 85016

GENERAL NOTES:
 1. ALL A TYPE FIXTURES MOUNTED AT 25' UNLESS NOTED OTHERWISE.
 2. ALL B TYPE FIXTURES MOUNTED AT 10' UNLESS NOTED OTHERWISE.

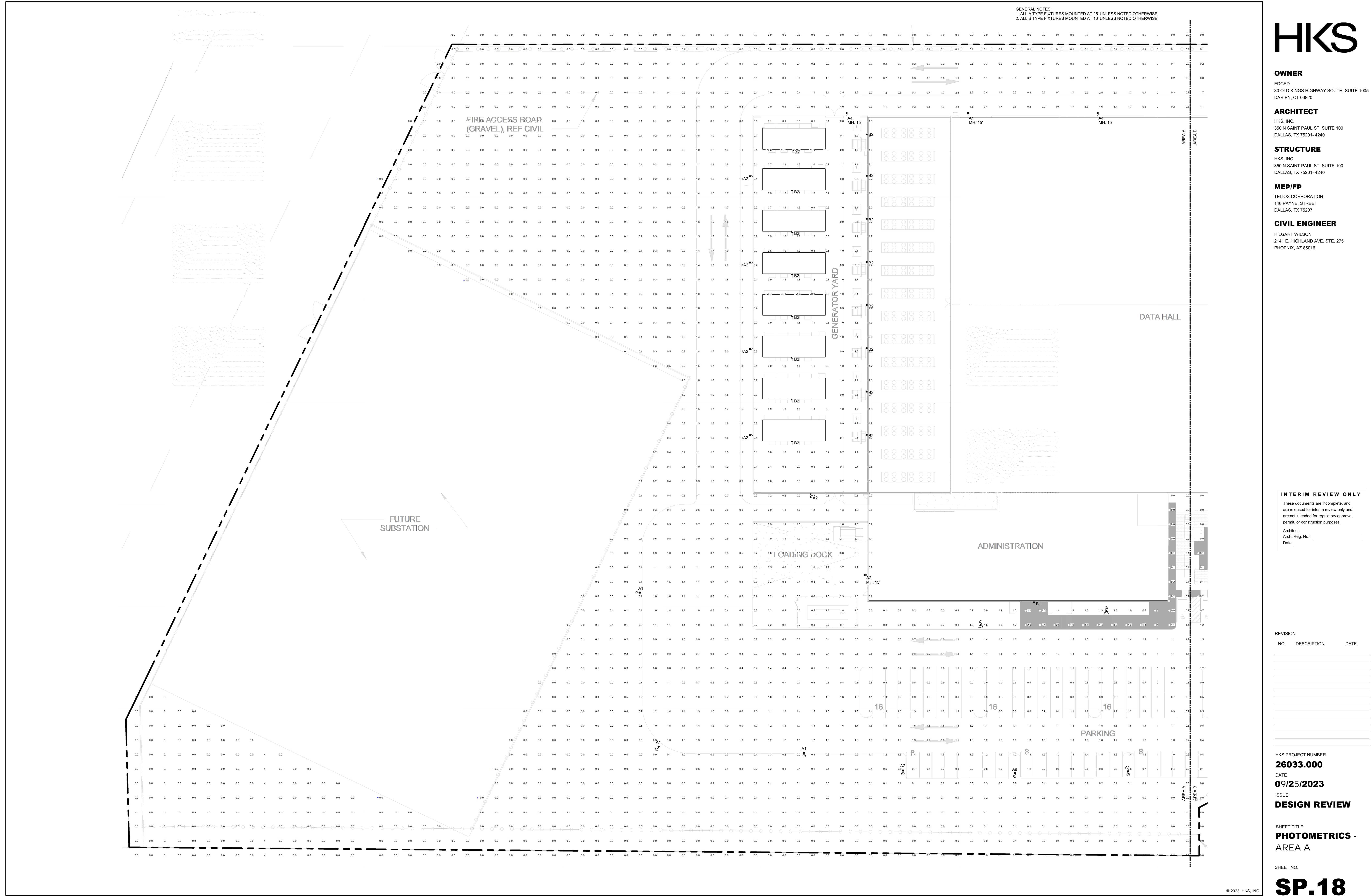
INTERIM REVIEW ONLY
 These documents are incomplete, and are released for interim review only and are not intended for regulatory approval, permit, or construction purposes.
 Architect:
 Arch. Reg. No.:
 Date:

REVISION	NO.	DESCRIPTION	DATE

HKS PROJECT NUMBER
26033.000
 DATE
09/25/2023
 ISSUE
DESIGN REVIEW

SHEET TITLE
PHOTOMETRICS - AREA A

SHEET NO.
SP.18



OWNER
 EDGED
 30 OLD KINGS HIGHWAY SOUTH, SUITE 1005
 DARIEN, CT 06820

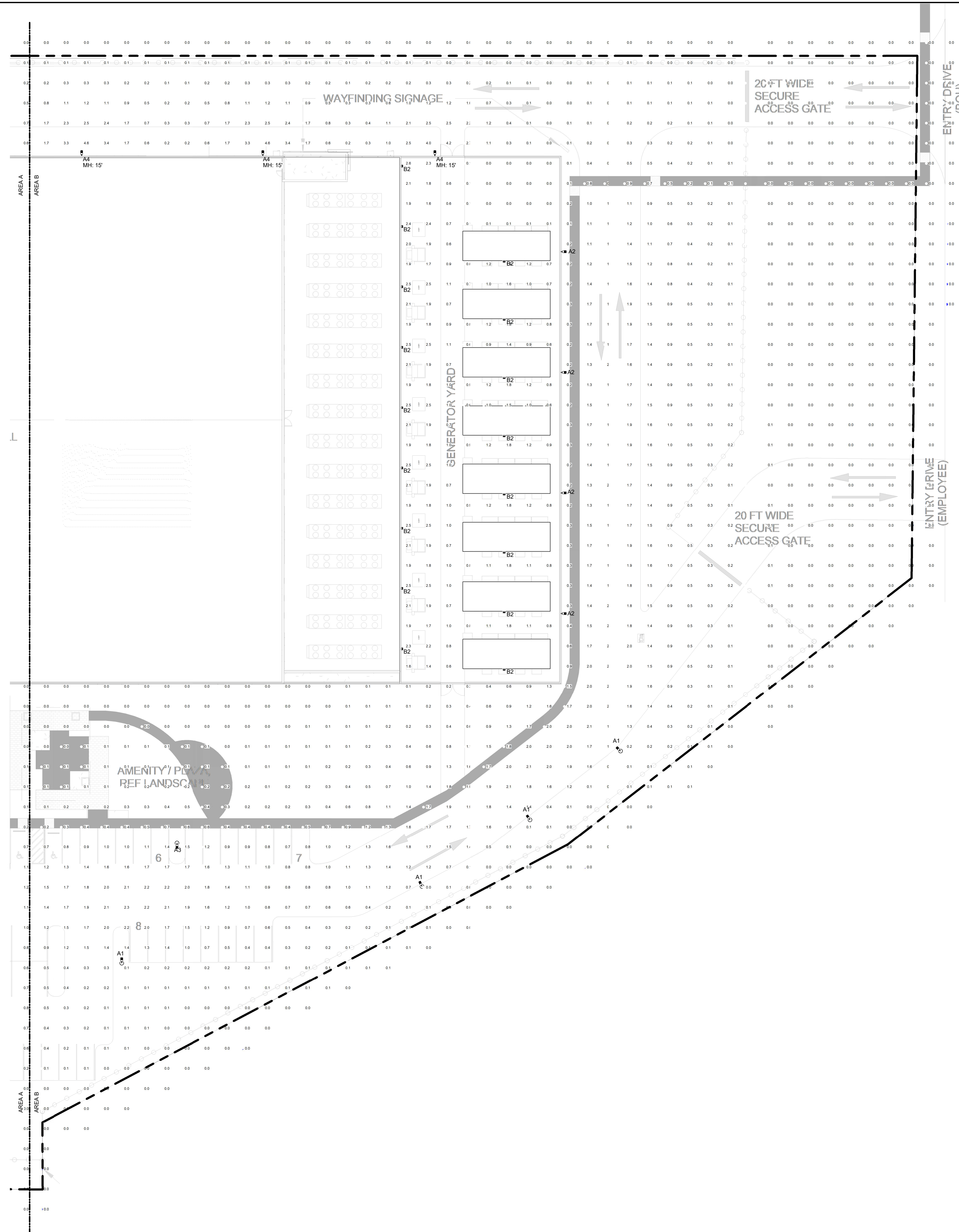
ARCHITECT
 HKS, INC.
 350 N SAINT PAUL ST, SUITE 100
 DALLAS, TX 75201-4240

STRUCTURE
 HKS, INC.
 350 N SAINT PAUL ST, SUITE 100
 DALLAS, TX 75201-4240

MEP/FP
 TELIOS CORPORATION
 146 PAYNE STREET
 DALLAS, TX 75207

CIVIL ENGINEER
 HILGART WILSON
 2141 E. HIGHLAND AVE. STE. 275
 PHOENIX, AZ 85016

GENERAL NOTES:
 1. ALL A TYPE FIXTURES MOUNTED AT 25' UNLESS NOTED OTHERWISE
 2. ALL B TYPE FIXTURES MOUNTED AT 10' UNLESS NOTED OTHERWISE



INTERIM REVIEW ONLY

These documents are incomplete, and are released for interim review only and are not intended for regulatory approval, permit, or construction purposes.

Architect: _____
 Arch. Reg. No.: _____
 Date: _____

REVISION

NO.	DESCRIPTION	DATE

HKS PROJECT NUMBER
26033.000
 DATE
09/25/2023
 ISSUE
DESIGN REVIEW

SHEET TITLE
PHOTOMETRICS - AREA B

SHEET NO.
SP.19