

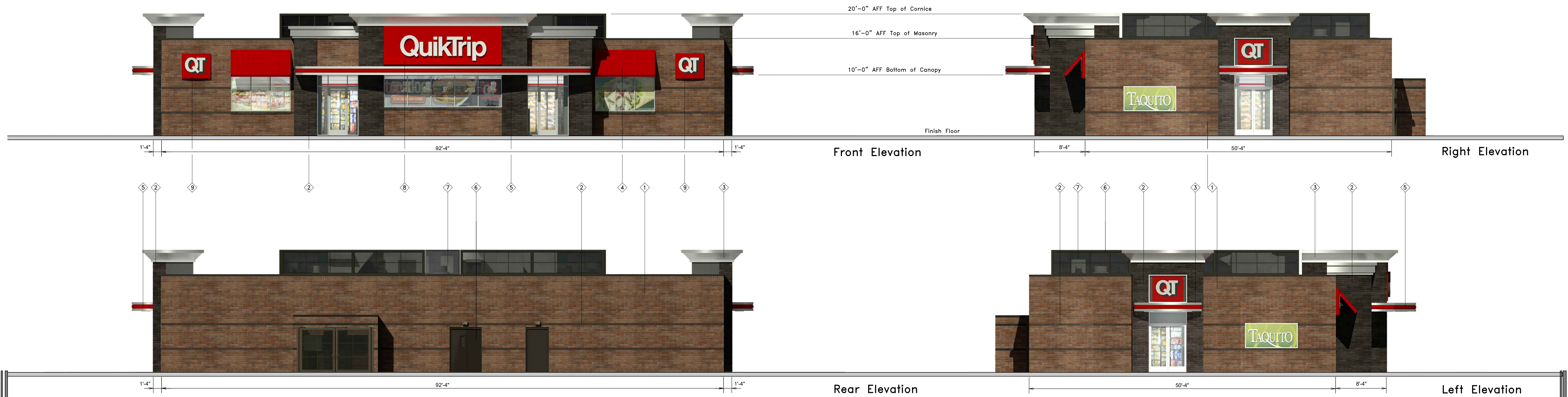
QuikTrip.
 4705 South 129th East Ave.
 Tulsa, OK 74134-7008
 P.O. Box 3475
 Tulsa, OK 74101-3475
 (918) 615-7700

Store # 1422 DS7 w/ Custom Column Spacing
 Serial # 05-1422-DS7
 Scale: 1/8" = 1'-0"
 Issue Date: 12.02.19

Address: 1956 E Southern Ave
 Drawn By: JK
 Rev/Notes:

City, State: Mesa, AZ
 COPYRIGHT © 2011 QUIKTRIP CORPORATION DESIGN PATENTS
 QUIKTRIP PLANS ARE THE EXCLUSIVE PROPERTY OF QUIKTRIP CORPORATION, TULSA, OKLAHOMA. THESE PLANS ARE PROTECTED IN THEIR ENTIRETY BY DOMESTIC AND INTERNATIONAL COPYRIGHT AND PATENT STATUTES. ANY UNAUTHORIZED USE, REPRODUCTION, PUBLICATION, DISTRIBUTION OR SALE IN WHOLE OR IN PART, IS STRICTLY FORBIDDEN.

| ① | FINISH | MANUFACTURER | SPECIFICATION |
|---|-------------------|--------------------|------------------------|
| 1 | HLZ-ALUMINUM | ALPOLIC | CANOPY |
| 2 | RED POLYCARBONATE | ALLEN INDUSTRIES | ILLUMINATED BAND |
| 3 | QT BROWN | SHERWIN - WILLIAMS | METAL PAINT |
| 4 | 100-14 | ALLEN INDUSTRIES | ILLUMINATED SIGNAGE |
| 5 | BRONZESTONE | INTERSTATE BRICK | ATLAS STRUCTURAL BRICK |
| 6 | BLACK | ALL COURT FABRICS | POLYPROP MESH |
| 7 | MIDNIGHT | INTERSTATE BRICK | ATLAS STRUCTURAL BRICK |

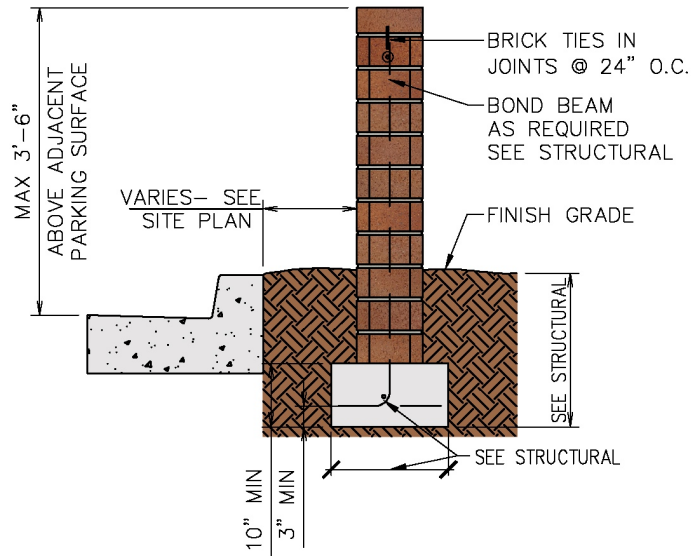


| | | | |
|-------------------------|-------------------------|---------------------------------|--------------------------|
| Store # 1422 | G3S Building Elevations | Address: 1956 E Southern Ave | City, State: Mesa, AZ |
| Serial # 05-1422-G3S | Scale: 1/8"=1'-0" | Issue Date: 09.13.19 | Drawn By: JK |
| | | Rev/Notes: | |

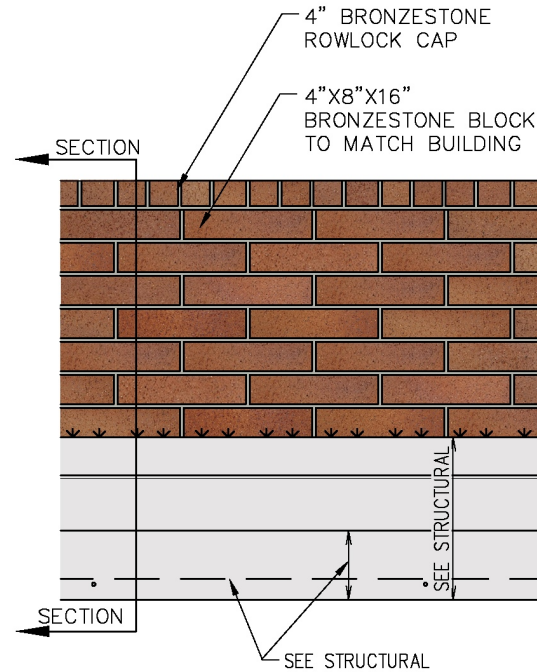
COPYRIGHT © 2011 QUIKTRIP CORPORATION DESIGN PATENTS QUIKTRIP PLANS ARE THE EXCLUSIVE PROPERTY OF QUIKTRIP CORPORATION, TULSA, OKLAHOMA. THESE PLANS ARE PROTECTED IN THEIR ENTIRETY BY DOMESTIC AND INTERNATIONAL COPYRIGHT AND PATENT STATUTES. ANY UNAUTHORIZED USE, REPRODUCTION, PUBLICATION, DISTRIBUTION OR SALE IN WHOLE OR IN PART, IS STRICTLY FORBIDDEN.

| ① | FINISH | MANUFACTURER | SPECIFICATION |
|---|-------------------|-------------------|------------------------|
| 1 | BRONZESTONE | INTERSTATE BRICK | ATLAS STRUCTURAL BRICK |
| 2 | MIDNIGHT | INTERSTATE BRICK | ATLAS STRUCTURAL BRICK |
| 3 | 1/2" ALUMINUM | ALPOLIC | PASCIA |
| 4 | QT RED | SHERWIN-WILLIAMS | STANDING SEAM AWNING |
| 5 | RED POLYCARBONATE | ALLEN INDUSTRIES | ILLUMINATED BAND |
| 6 | QT BROWN | SHERWIN-WILLIAMS | METAL PAINT |
| 7 | BLACK | ALL COURT FABRICS | POLYPRO 95 MESH |
| 8 | CL-50R | ALLEN INDUSTRIES | SIGNAGE |
| 9 | IDB-20 | ALLEN INDUSTRIES | ILLUMINATED SIGNAGE |

NOTE:
 PROVIDE EXPANSION JOINT @
 MAX. 24'-0" INTERVALS OR AT
 EACH CHANGE IN WALL HEIGHT
 OR AT ANY INTERSECTION.
 SEE STRUCTURAL



SECTION



ELEVATION

NOTE:
 WHERE GRADE CHANGE
 NECESSITATES STEP WALL
 IN 8" INCREMENTS

L1

MASONRY SCREEN WALL DETAIL

NTS

SN:



© COPYRIGHT QUIKTRIP CORPORATION 2011
 ANY UNAUTHORIZED USE, REPRODUCTION,
 PUBLICATION, DISTRIBUTION, OR SALE IN
 WHOLE OR IN PART, IS STRICTLY FORBIDDEN.

QuikTrip No.1422

1956 E. Southern Ave.

Mesa, Arizona



300 W. Clarendon Avenue
 Suite 320
 Phoenix, AZ 85013
 O: 602.234.1868
 F: 602.234.1413