



Design Review Board



DRB24-00037

Mesa AZ Eastmark Stake Center

Emily Johnson, Planner I

May 14, 2024



Request

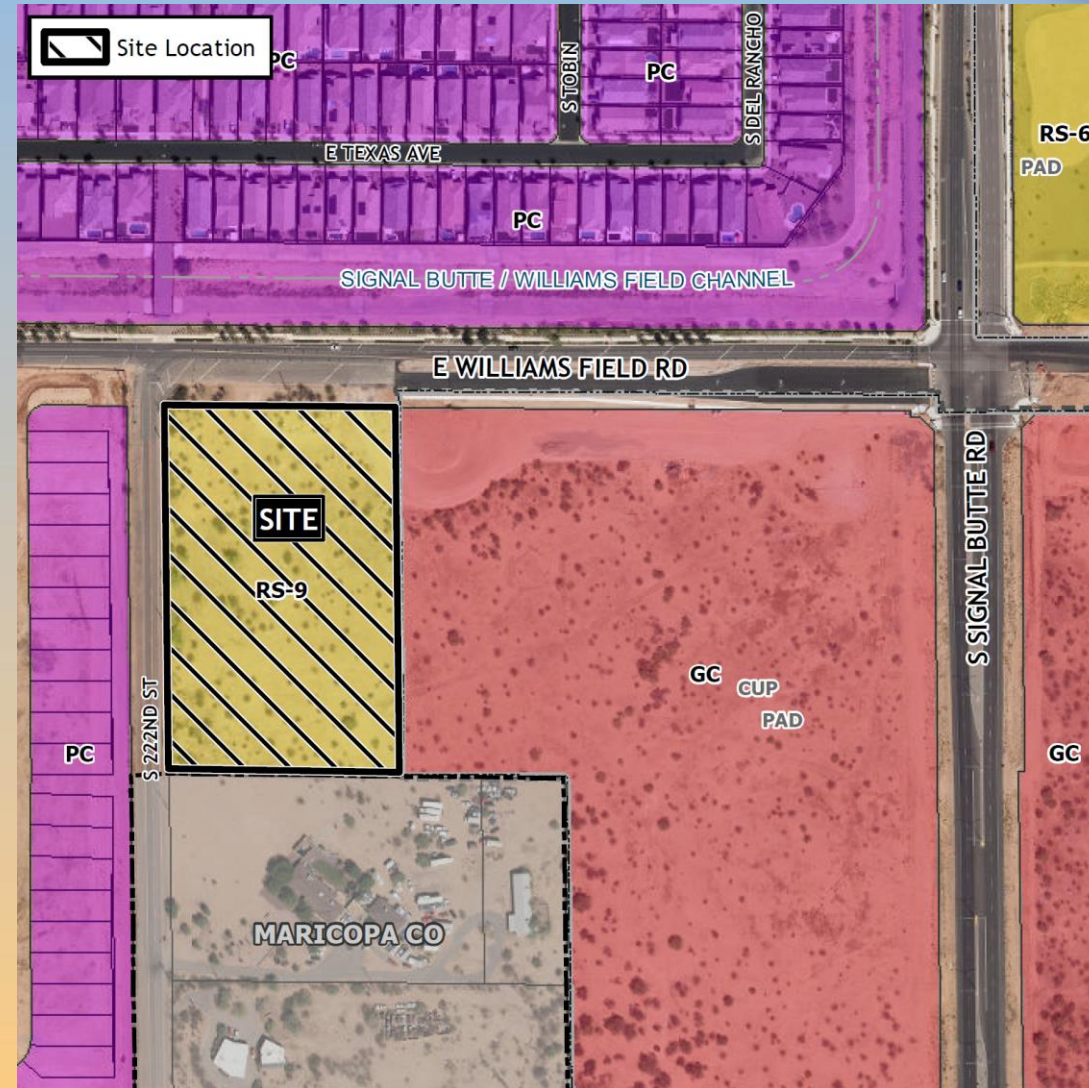
- Design Review
- To allow for a place of worship





Location

- South of Williams Field Road
- West of Signal Butte Road





Site Photos

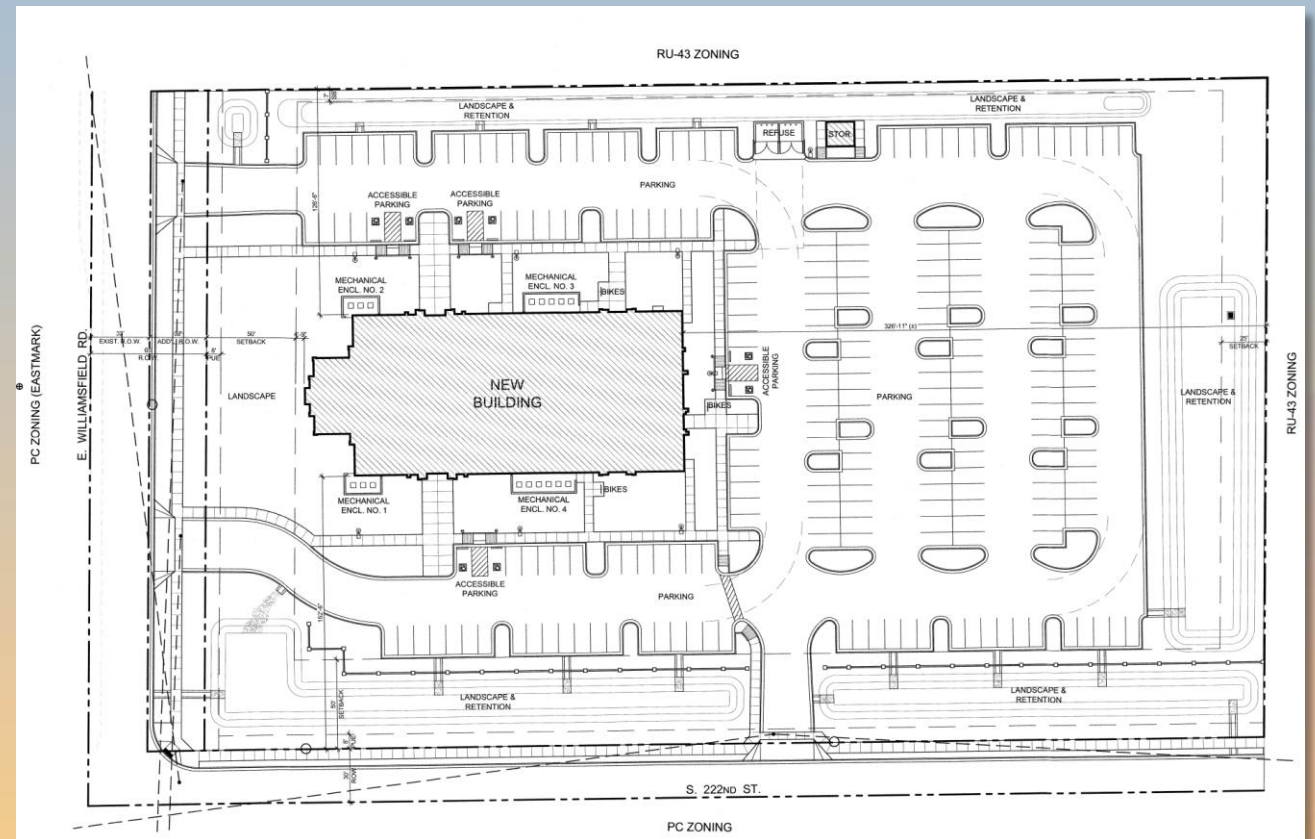


Looking southeast at the corner of Williams Field Rd and 222nd St



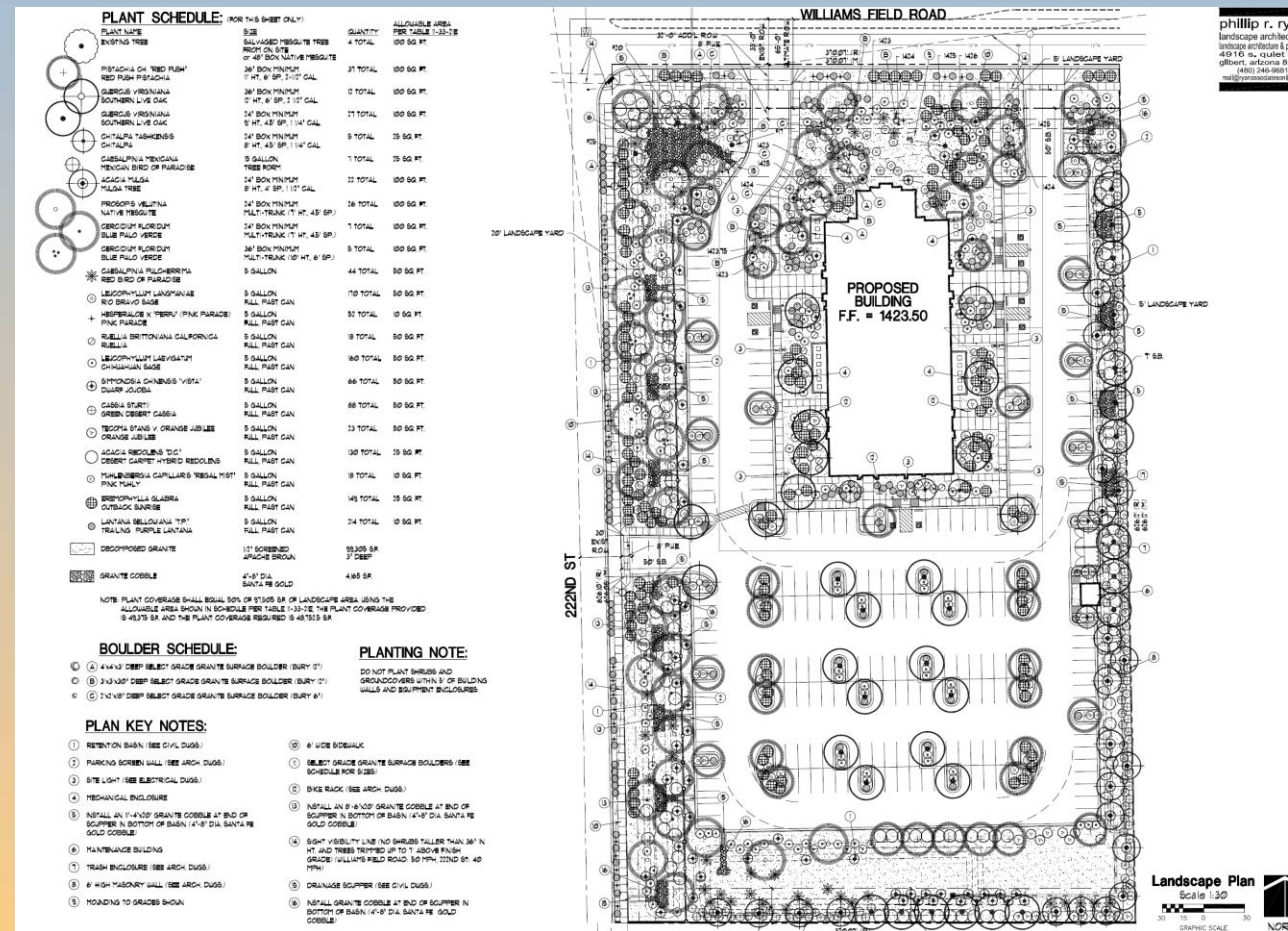
Site Plan

- 18,114 sq. ft. religious facility and 190 sq. ft. storage building
- 207 parking spaces required; 230 proposed
- Access from Williams Field Rd and 222nd St





Landscape Plan



phillip r. ryan
landscape architect p.c.
landscape architecture & planning
433 FO. W. QUINN WAY
GILBERT, ARIZONA 85298
480.730.0000
www.phillipryan.com

Landscape Plan
Scale 1:30
GRAPHIC SCALE
NORTH



Elevations

NORTH ELEVATION
1/8" = 1'-0"

EXTERIOR BUILDING MATERIALS							
TOTAL MATERIAL AREA (NORTH ONLY) = 2,071 SF							
TOTAL MATERIAL AREA (EAST ONLY) = 2,914 SF							
TOTAL MATERIAL AREA (SOUTH ONLY) = 2,071 SF							
TOTAL MATERIAL AREA (WEST ONLY) = 2,914 SF							
TOTAL MATERIAL AREA (ALL 4 ELEVATIONS) = 9,970 SF							
	MATERIAL / ITEM	MANUFACTURER	PRODUCT / COLOR	NORTH ELEV. AREA SF (%)	EAST ELEV. AREA SF (%)	SOUTH ELEV. AREA SF (%)	WEST ELEV. AREA SF (%)
001	FIELD BRICK	INTERSTATE BRICK	PEWTER L-4	988 SF (47%)	913 SF (31%)	1,073 SF (51%)	1,010 SF (35%)
002	ACCENT BRICK	INTERSTATE BRICK	PLATINUM	42 SF (2%)	82 SF (3%)	40 SF (2%)	81 SF (3%)
003	WAINSCOT & STEEPLE BRICK	GENERAL BRICK	THUNDERCLOUD	438 SF (21%)	853 SF (29%)	295 SF (14%)	849 SF (29%)
004	CONCRETE ROOF TILE	EAGLE ROOFING	5699 GRAY	-	-	-	-
005	EIFS REVEAL PANEL	PAINT - DUNN EDWARDS	STEVEARENO BEIGE DEC796 (FLAT)	133 SF (6%)	N/A	37 SF (2%)	N/A
006	PRECAST CONCRETE	-	NATURAL GREY	46 SF (2%)	79 SF (3%)	47 SF (2%)	73 SF (2%)
007	STEEPLE METAL	-	PREFINISHED BONE WHITE	153 SF (7%)	153 SF (5%)	153 SF (7%)	153 SF (5%)
008	METAL FASCIA & RAKE	-	PREFINISHED BONE WHITE	-	-	-	-
009	STOREFRONT DRS./FRAME/GLAZG.	-	WHITE	23 SF (1%)	242 SF (8%)	97 SF (4%)	196 SF (7%)
010	METAL LOUVERS	-	TO MATCH ADJACENT BRICK COLOR	-	-	-	-
011	VINYL WINDOWS / GLAZING	-	WHITE / OBSCURE	50 SF (2%)	138 SF (5%)	50 SF (2%)	166 SF (6%)
012	HOLLOW METAL DOOR / FRAME	-	WHITE	-	-	-	-
013	CHURCH SIGNS	-	BARRE GRAY GRANITE	-	-	-	-

EAST ELEVATION



Elevations

EXTERIOR BUILDING MATERIALS							
		TOTAL MATERIAL AREA (NORTH ONLY)		= 2,071 SF			
		TOTAL MATERIAL AREA (EAST ONLY)		= 2,914 SF			
		TOTAL MATERIAL AREA (SOUTH ONLY)		= 2,071 SF			
		TOTAL MATERIAL AREA (WEST ONLY)		= 2,914 SF			
		TOTAL MATERIAL AREA (ALL 4 ELEVATIONS)		= 9,970 SF			
	MATERIAL / ITEM	MANUFACTURER	PRODUCT / COLOR	NORTH ELEV. AREA SF (%)	EAST ELEV. AREA SF (%)	SOUTH ELEV. AREA SF (%)	WEST ELEV. AREA SF (%)
001	FIELD BRICK	INTERSTATE BRICK	PEWTER L-4	969 SF (47%)	913 SF (31%)	1,073 SF (51%)	1,010 SF (35%)
002	ACCENT BRICK	INTERSTATE BRICK	PLATINUM	42 SF (2%)	82 SF (3%)	40 SF (1%)	81 SF (2%)
003	WAINSCOT & STEEPLE BRICK	GENERAL SHALE	THUNDERCLOUD	438 SF (21%)	853 SF (29%)	295 SF (14%)	849 SF (29%)
004	CONCRETE ROOF TILE	EAGLE ROOFING	5699 GRAY	-	-	-	-
005	EFS REVEAL PANEL	PAINT - DUNN EDWARDS	STEVEARENO BEIGE DEC756 (FLAT)	133 SF (6%)	N/A	37 SF (1%)	N/A
006	PRECAST CONCRETE	-	NATURAL GREY	46 SF (2%)	79 SF (3%)	47 SF (2%)	73 SF (2%)
007	STEEPLE METAL	-	PREFINISHED BONE WHITE	153 SF (7%)	153 SF (5%)	153 SF (7%)	153 SF (5%)
008	METAL FASCIA & RAPE	-	PREFINISHED BONE WHITE	-	-	-	-
009	STOREFRONT DR.S./FRAME/GLAZ'G	-	WHITE	23 SF (1%)	242 SF (8%)	97 SF (4%)	196 SF (7%)
010	METAL LOUVERS	-	TO MATCH ADJACENT BRICK COLOR	-	-	-	-
011	VINYL WINDOWS / GLAZING	-	WHITE / OBSCURE	50 SF (2%)	138 SF (5%)	50 SF (2%)	186 SF (5%)
012	HOLLOW METAL DOOR / FRAME	-	WHITE	-	-	-	-
013	CHURCH SIGNS	-	BARRE GRAY GRANITE	-	-	-	-




Rendering



View from the corner of Williams Field Rd and 222nd St



Material Board

			
<p>EXTERIOR BRICK FIELD INTERSTATE BRICK FEWTER L-4 - MATTE</p>	<p>EXTERIOR BRICK ACCENT INTERSTATE BRICK PLATINUM - MATTE</p>	<p>EXTERIOR BRICK WAINSCOAT GENERAL SHALE THUNDERCLOUD</p>	<p>EXTERIOR EIFS DUNN-EDWARDS PAINTS DEC766 "STEVEARENO BEIGE" LRV 44</p>
			
<p>STEEPLE, EXTERIOR TRIM, LIGHT POST, ALUMINUM STOREFRONT & MISCELLANEOUS EXTERIOR METAL MBCI SIG 300 LOW GLOSS "BONE WHITE"</p>	<p>ROOF TILE EAGLE 5699</p>	<p>INTEGRAL COLOR CONCRETE MASONRY UNIT OR STAINED OLDCASTLE SUPERLITE - ECHELON MOJAVE BROWN - COCOA BROWN MEDIUM WEIGHT</p>	<p>WINDOW GLAZING SOLARBAN 70 XL</p>

EXTERIOR COLOR & MATERIAL BOARD

MESA ARIZONA EASTMARK GRANGER 250-4SC
 THE CHURCH OF JESUS CHRIST OF LATTER-DAY SAINTS
 MESA AZ EASTMARK STAKE
 10621 E. WILLIAMSFIELD RD. MESA, AZ 85212

Sketch
Architecture Company
2454 EAST SOUTHERN AVENUE # 110, MESA, ARIZONA 85204
PH 480.668.8015 FAX 480.668.8022



Alternative Compliance

- ✓ Materials. No more than 50% of the façade may be covered with one single material



Findings

Staff is seeking your review and recommendation on the following:

- ✓ Proposed building elevations and landscape design
- ✓ Alternative Compliance for building material percentages

Staff welcomes any feedback



Design Review Board