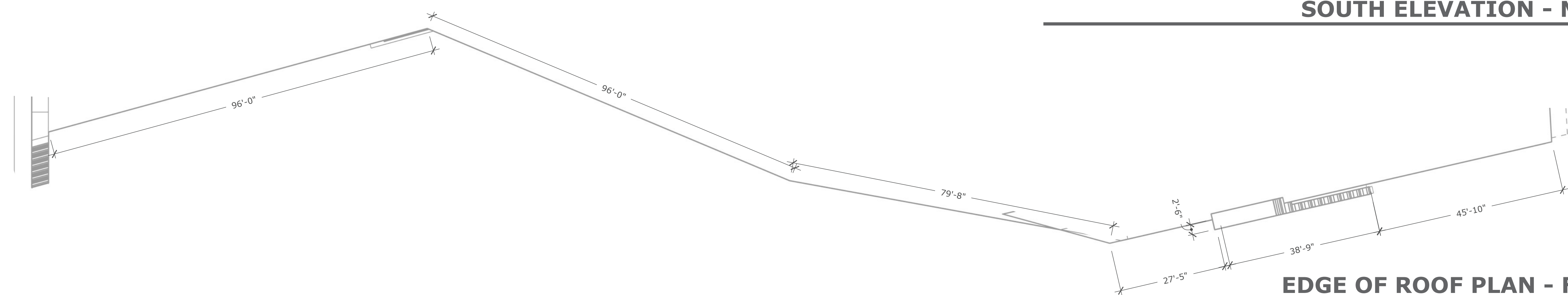










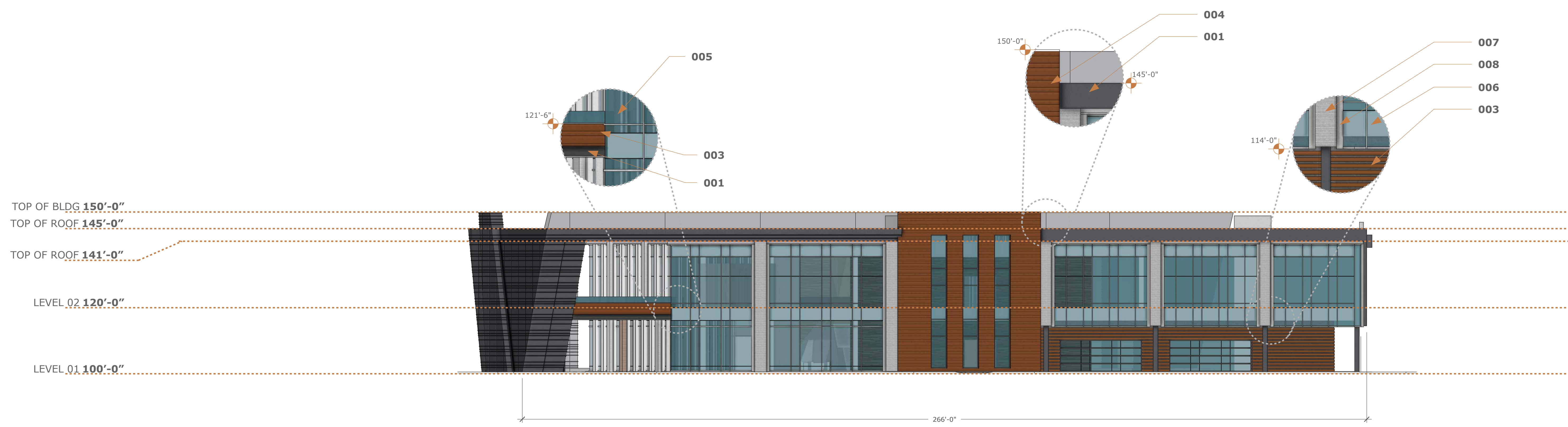
SOUTH ELEVATION - MAIN BUILDING
SCALE 1/16" = 1'-0"



EDGE OF ROOF PLAN - FOR REFERENCE
SCALE 1/16" = 1'-0"

MATERIALS LEGEND

001  ACM METAL PANEL SYSTEM	003  LOUVERED WALL SYSTEM	005  VITRO VISTACOOOL REFLECTIVE BLUE	007  ACM METAL PANEL SYSTEM
002  DRI-DESIGN ZINC PANEL SYSTEM	004  DRI-DESIGN METAL PANEL SYSTEM	006  SPANDREL PANEL SYSTEM	008  ANODIZED ALUMINUM METAL



EAST ELEVATIONS - MAIN BUILDING
SCALE 1/16" = 1'-0"

GENERAL NOTES ON DESIGN

HEIGHT CHANGES CALLED OUT IN ENLARGED DETAILS WITH ELEVATION MARKERS AND/OR DIMENSIONS LINES WHEN APPLICABLE

MATERIALS CALLED OUT WITH NUMERICAL TAG(S) THAT REFERENCE BACK TO MATERIAL LEGEND AND LIST MATERIALS

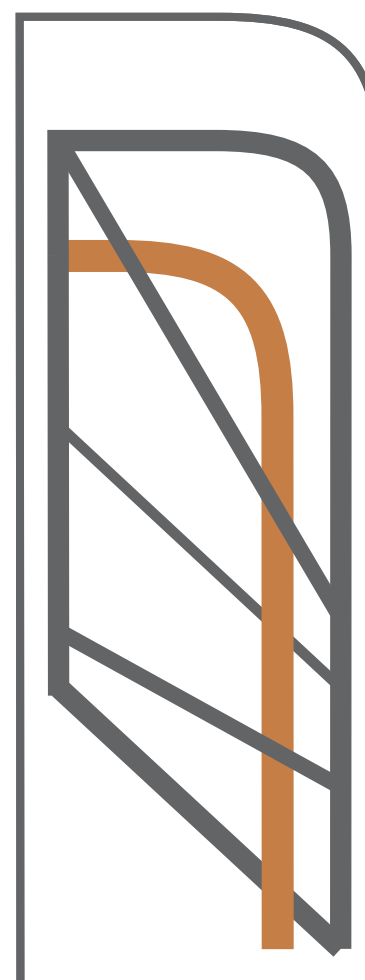
MATERIALS MAY APPEAR FADED THE FARTHER BACK THEY ARE LOCATED FROM THE MAIN FACADE OF THE ELEVATION

ELEVATION MATERIALS PERCENTAGES

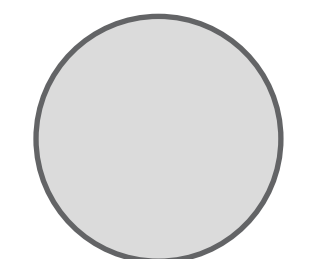
40.5 %	DRI DESIGN METAL PANEL SYSTEM
15 %	ACM METAL PANEL SYSTEM
- %	LOUVERED WALL SYSTEM
6.5 %	ANODIZED ALUMINUM METAL CURTAIN WALL
30 %	VITRO VISTACOOOL REFLECTIVE BLUE
8 %	SPANDREL PANEL SYSTEM

ELEVATION MATERIALS PERCENTAGES

10.5 %	DRI DESIGN METAL PANEL SYSTEM
23 %	ACM METAL PANEL SYSTEM
12 %	LOUVERED WALL SYSTEM
10 %	ANODIZED ALUMINUM METAL CURTAIN WALL
34.5 %	VITRO VISTACOOOL REFLECTIVE BLUE
10 %	SPANDREL PANEL SYSTEM

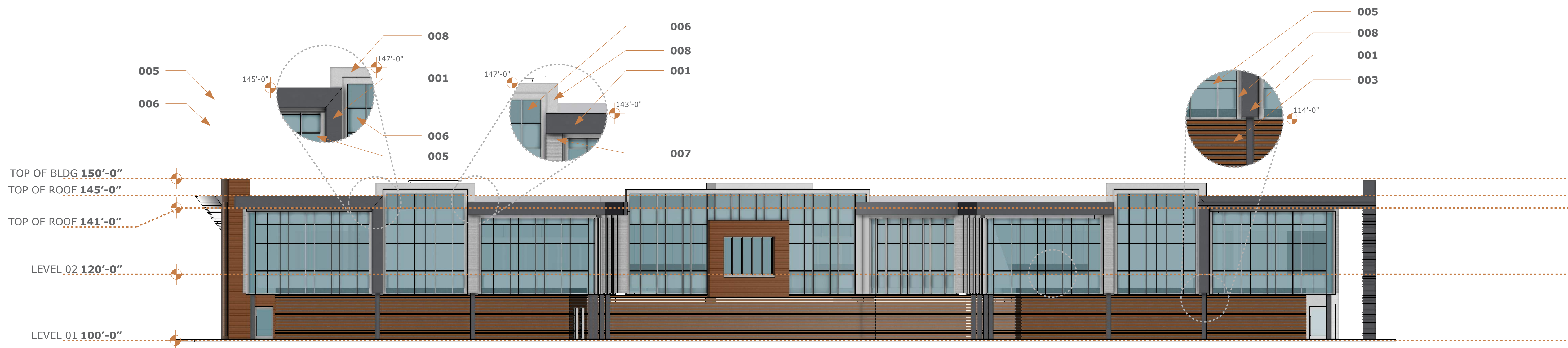


222 ND PECOS ROAD PROJECT

PROJECT NO. 
ISSUE 06.14.2024

ELEVATION DRAWINGS OFFICE BUILDING





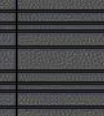



A
2.0

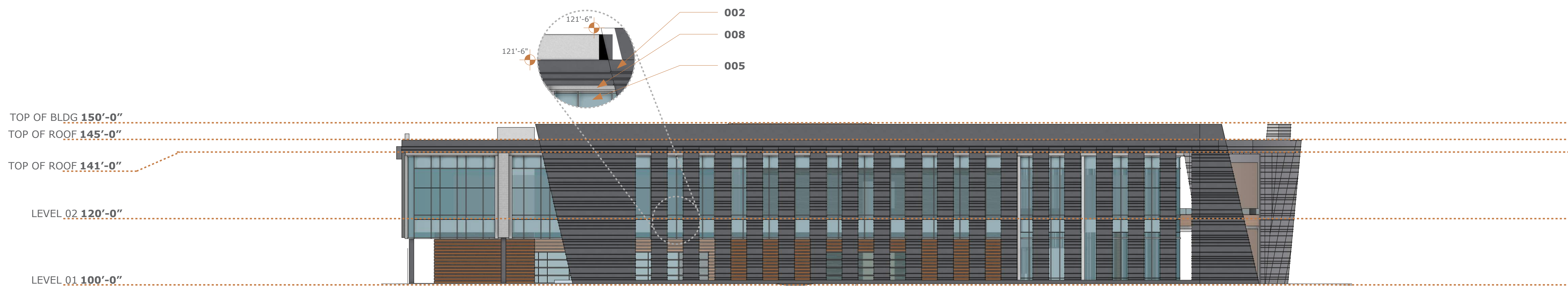


NORTH ELEVATION - MAIN BUILDING

SCALE 1/16" = 1'-0"

MATERIALS LEGEND

001  ACM METAL PANEL SYSTEM	003  LOUVERED WALL SYSTEM	005  VITRO VISTACOOOL REFLECTIVE BLUE	007  ACM METAL PANEL SYSTEM
002  DRI-DESIGN ZINC PANEL SYSTEM	004  DRI-DESIGN METAL PANEL SYSTEM	006  SPANDREL PANEL SYSTEM	008  ANODIZED ALUMINUM METAL



WEST ELEVATIONS - MAIN BUILDING

SCALE 1/16" = 1'-0"

GENERAL NOTES ON DESIGN

HEIGHT CHANGES CALLED OUT IN ENLARGED DETAILS WITH ELEVATION MARKERS AND/OR DIMENSIONS LINES WHEN APPLICABLE

MATERIALS CALLED OUT WITH NUMERICAL TAG(S) THAT REFERENCE BACK TO MATERIAL LEGEND AND LIST MATERIALS

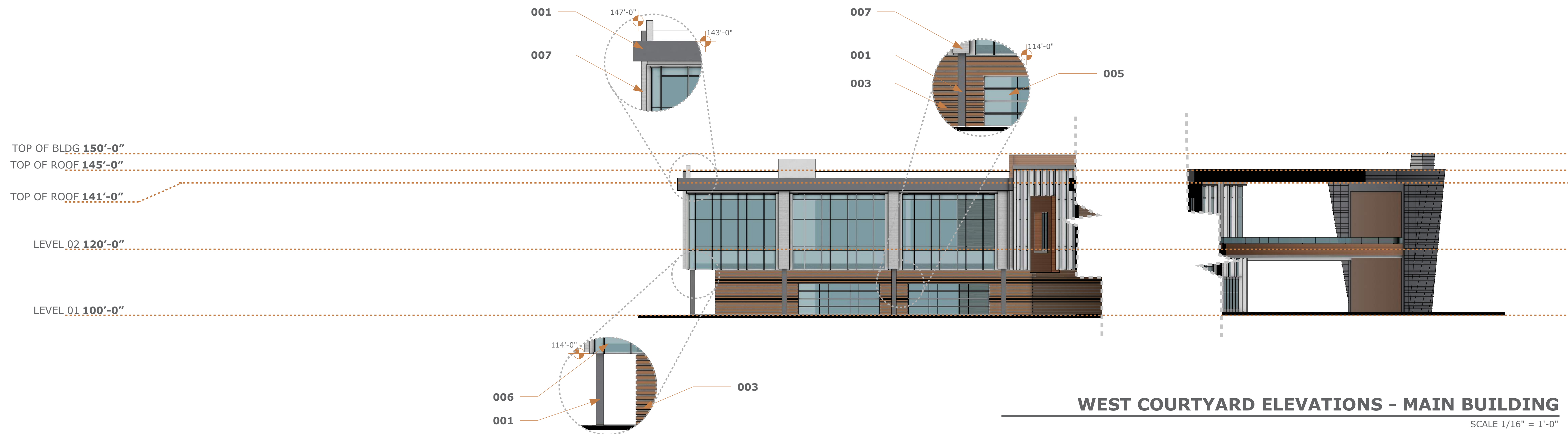
MATERIALS MAY APPEAR FADED THE FARTHER BACK THEY ARE LOCATED FROM THE MAIN FACADE OF THE ELEVATION

ELEVATION MATERIALS PERCENTAGES

2.5 %	DRI DESIGN METAL PANEL SYSTEM
17.5 %	ACM METAL PANEL SYSTEM
23.5 %	LOUVERED WALL SYSTEM
9 %	ANODIZED ALUMINUM METAL CURTAIN WALL
37.5 %	VITRO VISTACOOOL REFLECTIVE BLUE
9 %	SPANDREL PANEL SYSTEM
- %	MISC

ELEVATION MATERIALS PERCENTAGES

10.5 %	DRI DESIGN METAL PANEL SYSTEM
23 %	ACM METAL PANEL SYSTEM
12 %	LOUVERED WALL SYSTEM
10 %	ANODIZED ALUMINUM METAL CURTAIN WALL
34.5 %	VITRO VISTACOOOL REFLECTIVE BLUE
10 %	SPANDREL PANEL SYSTEM
- %	MISC



MATERIALS LEGEND

- | | | | |
|---|--|---|--|
| 001 [Material Swatch] ACM METAL PANEL SYSTEM | 003 [Material Swatch] LOUVERED WALL SYSTEM | 005 [Material Swatch] VITRO VISTACOOOL REFLECTIVE BLUE | 007 [Material Swatch] ACM METAL PANEL SYSTEM |
| 002 [Material Swatch] DRI-DESIGN ZINC PANEL SYSTEM | 004 [Material Swatch] DRI-DESIGN METAL PANEL SYSTEM | 006 [Material Swatch] SPANDREL PANEL SYSTEM | 008 [Material Swatch] ANODIZED ALUMINUM METAL |

GENERAL NOTES ON DESIGN

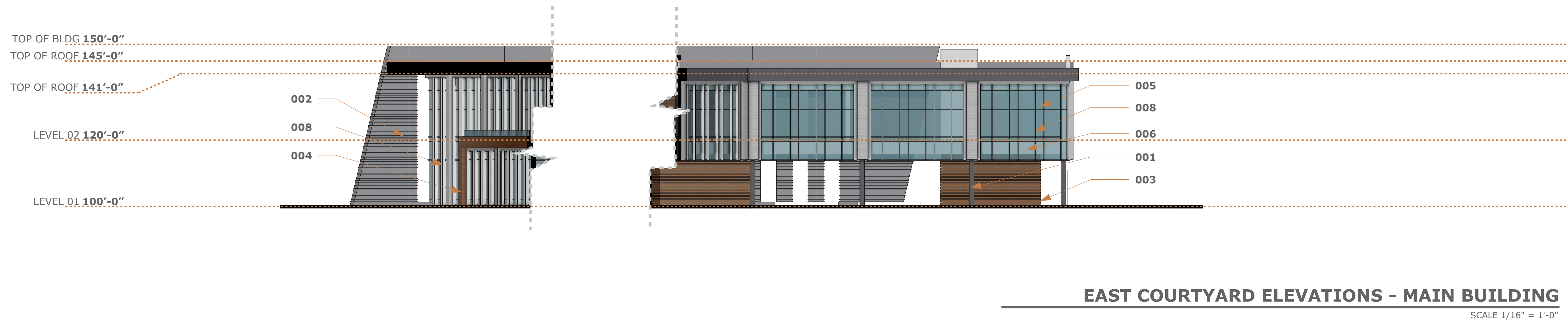
HEIGHT CHANGES CALLED OUT IN ENLARGED DETAILS WITH ELEVATION MARKERS AND/OR DIMENSIONS LINES WHEN APPLICABLE

MATERIALS CALLED OUT WITH NUMERICAL TAG(S) THAT REFERENCE BACK TO MATERIAL LEGENED AND LIST MATERIALS

MATERIALS MAY APPEARED FADED THE FATHER BACK THEY ARE LOCATED FROM THE MAIN FACADE OF THE ELEVATION

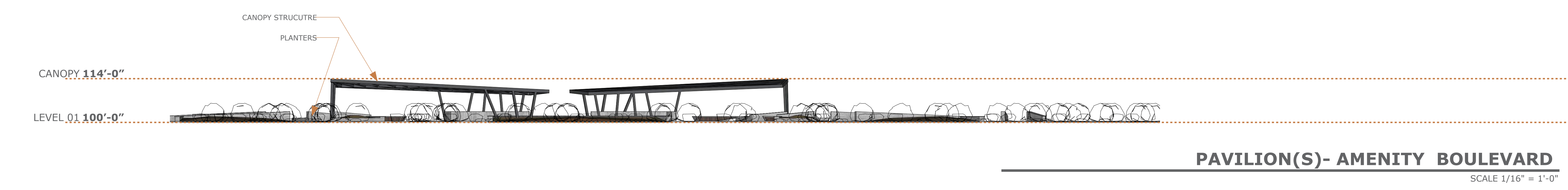
MATERIALS PERCENTAGES PER ELEVATION

- 0 % DRI DESIGN METAL PANEL SYSTEM
- 19 % ACM METAL PANEL SYSTEM
- 25 % LOUVERED WALL SYSTEM
- 10 % ANODIZED ALUMINUM METAL CURTAIN WALL
- 40 % VITRO VISTACOOOL REFLECTIVE BLUE
- 6 % SPANDREL PANEL SYSTEM
- % FORM LINER CONCRETE
- % SANDBLASTED CONCRETE
- % METALIC PAINT
- % TEXTURED PAINT
- % PAINT



MATERIALS PERCENTAGES PER ELEVATION

- % DRI DESIGN METAL PANEL SYSTEM
- 25 % ACM METAL PANEL SYSTEM
- 13 % LOUVERED WALL SYSTEM
- 6.5 % ANODIZED ALUMINUM METAL CURTAIN WALL
- 46.5 % VITRO VISTACOOOL REFLECTIVE BLUE
- 8 % SPANDREL PANEL SYSTEM
- % FORM LINER CONCRETE
- % SANDBLASTED CONCRETE
- % METALIC PAINT
- % TEXTURED PAINT
- % PAINT



GENERAL NOTES ON DESIGN

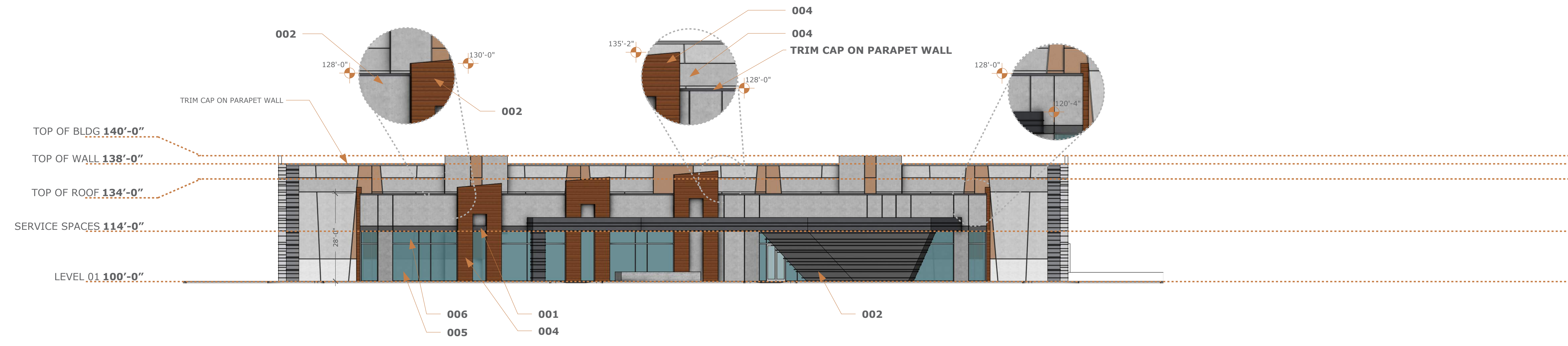
HEIGHT CHANGES CALLED OUT IN ENLARGED DETAILS WITH ELEVATION MARKERS AND/OR DIMENSIONS LINES WHEN APPLICABLE

MATERIALS CALLED OUT WITH NUMERICAL TAG(S) THAT REFERENCE BACK TO MATERIAL LEGEND AND LIST MATERIALS

MATERIALS MAY APPEAR FADED THE FARTHER BACK THEY ARE LOCATED FROM THE MAIN FACADE OF THE ELEVATION

ELEVATION MATERIALS PERCENTAGES

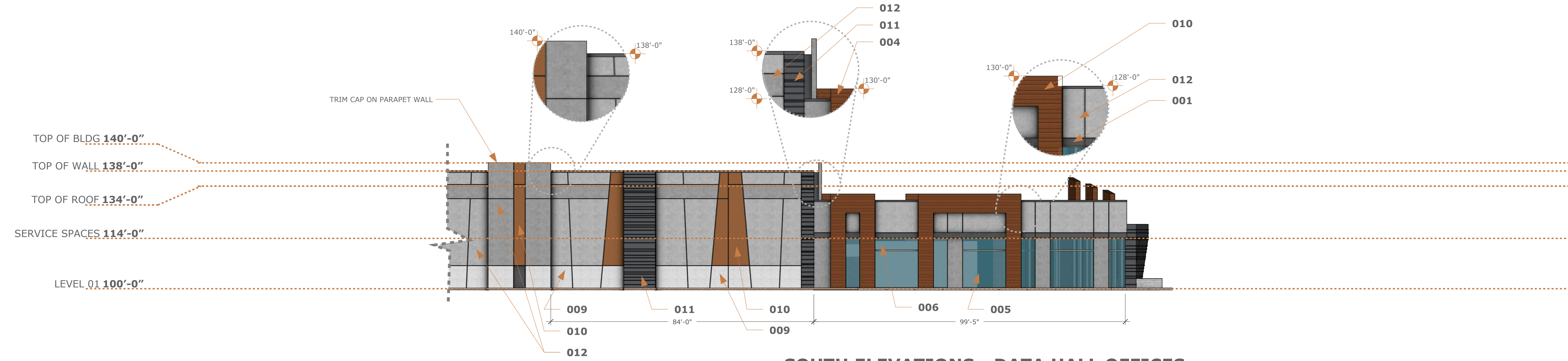
- 19.5 % DRI DESIGN METAL PANEL SYSTEM
- 14.5 % ACM METAL PANEL SYSTEM
- 3.5 % ANODIZED ALUMINUM METAL CURTAIN WALL
- 15.5 % VITRO VISTACOOOL REFLECTIVE BLUE
- 4 % SPANDREL PANEL SYSTEM
- 3 % STUCCO
- 12 % METALIC COATING
- 28 % CONCRETE FINISHED



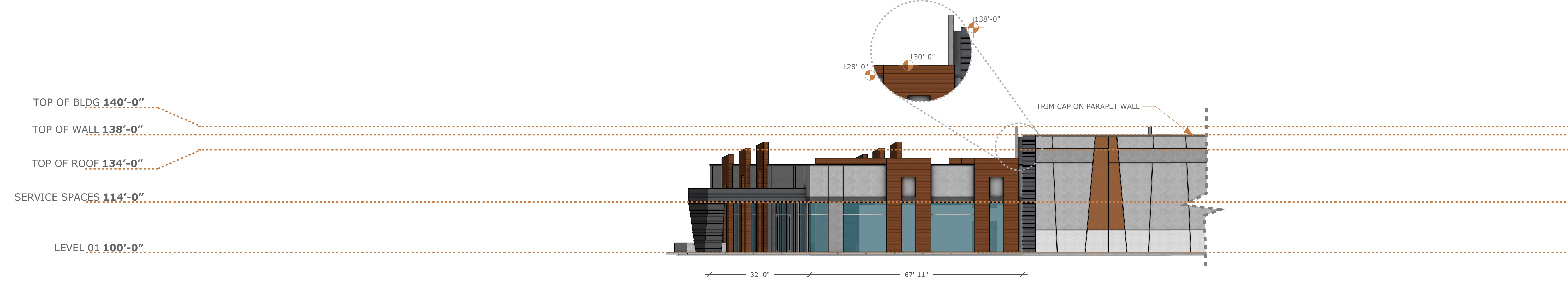
EAST ELEVATIONS - DATA HALL OFFICES
SCALE 1/16" = 1'-0"

MATERIALS LEGEND

001 [Swatch] ACM METAL PANEL SYSTEM	004 [Swatch] DRI-DESIGN METAL PANEL SYSTEM	007 [Swatch] ACM METAL PANEL SYSTEM	010 [Swatch] METALIC PAINT
002 [Swatch] DRI-DESIGN ZINC PANEL SYSTEM	005 [Swatch] VITRO VISTACOOOL REFLECTIVE BLUE	008 [Swatch] ANODIZED ALUMINUM METAL	011 [Swatch] METAL PANEL SYSTEM
003 [Swatch] LOUVERED WALL SYSTEM	006 [Swatch] SPANDREL PANEL SYSTEM	009 [Swatch] STUCCO	012 [Swatch] EXPOSED/PAINTED CONCRETE



SOUTH ELEVATIONS - DATA HALL OFFICES
SCALE 1/16" = 1'-0"



NORTH ELEVATION - DATA HALL OFFICES
SCALE 1/16" = 1'-0"

ELEVATION(S) MATERIALS PERCENTAGES

- .5 % DRI DESIGN METAL PANEL SYSTEM
- 13 % ACM METAL PANEL SYSTEM
- .5 % ANODIZED ALUMINUM METAL CURTAIN WALL
- 2.75 % VITRO VISTACOOOL REFLECTIVE BLUE
- .25 % SPANDREL PANEL SYSTEM
- 16 % STUCCO
- 15 % METALIC COATING
- 50 % CONCRETE FINISHED

GENERAL NOTES ON DESIGN

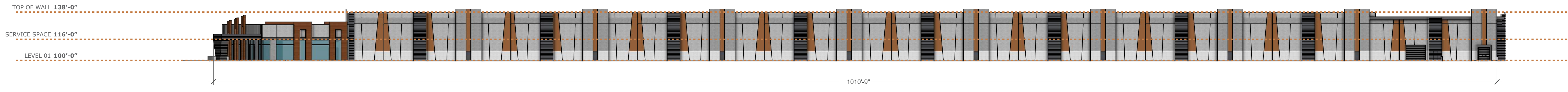
HEIGHT CHANGES CALLED OUT IN ENLARGED DETAILS WITH ELEVATION MARKERS AND/OR DIMENSIONS LINES WHEN APPLICABLE

MATERIALS CALLED OUT WITH NUMERICAL TAG(S) THAT REFERENCE BACK TO MATERIAL LEGEND AND LIST MATERIALS

MATERIALS MAY APPEAR FADED THE FARTHER BACK THEY ARE LOCATED FROM THE MAIN FACADE OF THE ELEVATION

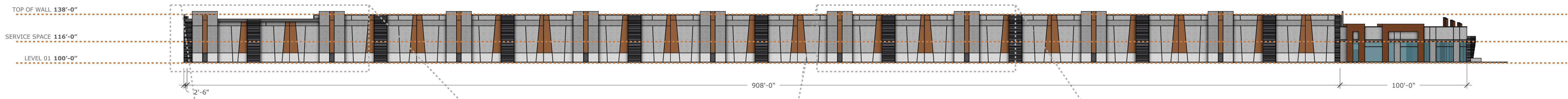
ELEVATION(S) MATERIALS PERCENTAGES

- .5 % DRI DESIGN METAL PANEL SYSTEM
- 13 % ACM METAL PANEL SYSTEM
- .5 % ANODIZED ALUMINUM METAL CURTAIN WALL
- 2.75 % VITRO VISTACOOOL REFLECTIVE BLUE
- .25 % SPANDREL PANEL SYSTEM
- 16 % STUCCO
- 15 % METALIC COATING
- 50 % CONCRETE FINISHED



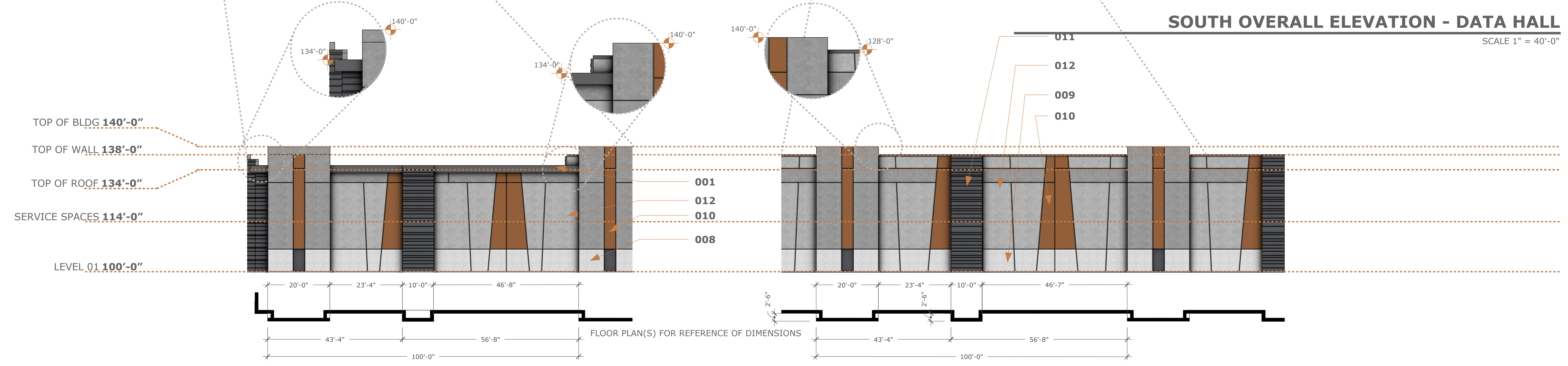
NORTH OVERALL ELEVATION - DATA HALL

SCALE 1" = 40'-0"



SOUTH OVERALL ELEVATION - DATA HALL

SCALE 1" = 40'-0"

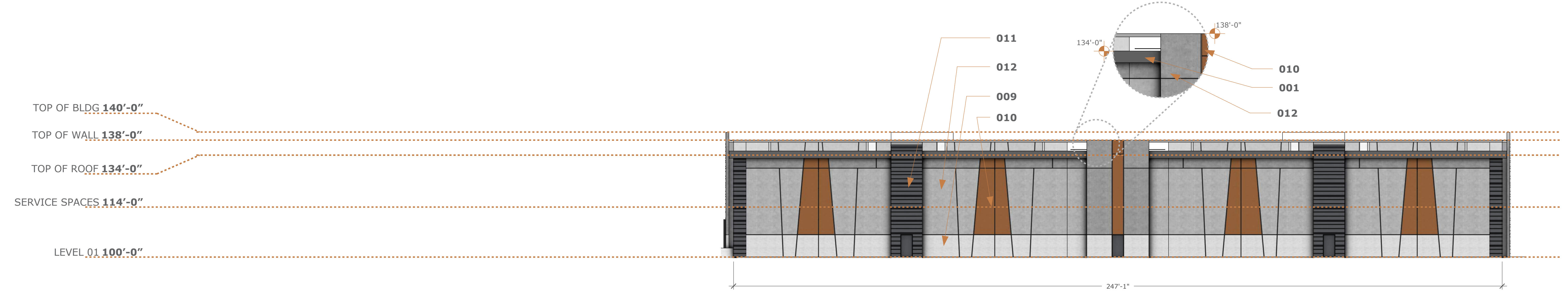


ENLARGED DETAILED ELEVATION(S) - DATA HALL

SCALE 1/16" = 1'-0"

MATERIALS LEGEND

- | | | | |
|---|---|--|---|
| 001 [Pattern] ACM METAL PANEL SYSTEM | 004 [Pattern] DRI-DESIGN METAL PANEL SYSTEM | 007 [Pattern] ACM METAL PANEL SYSTEM | 010 [Pattern] METALIC PAINT |
| 002 [Pattern] DRI-DESIGN ZINC PANEL SYSTEM | 005 [Pattern] VITRO VISTACOOOL REFLECTIVE BLUE | 008 [Pattern] ANODIZED ALUMINUM METAL | 011 [Pattern] METAL PANEL SYSTEM |
| 003 [Pattern] LOUVERED WALL SYSTEM | 006 [Pattern] SPANDREL PANEL SYSTEM | 009 [Pattern] STUCCO | 012 [Pattern] EXPOSED/PAINTED CONCRETE |



WEST ELEVATION - DATA HALL OFFICES

SCALE 1/16" = 1'-0"

ELEVATION(S) MATERIALS PERCENTAGES

- % DRI DESIGN METAL PANEL SYSTEM
- 16 % ACM METAL PANEL SYSTEM
- % ANODIZED ALUMINUM METAL CURTAIN WALL
- % VITRO VISTACOOOL REFLECTIVE BLUE
- % SPANDREL PANEL SYSTEM
- 20 % STUCCO
- 14 % METALIC COATING
- 50 % CONCRETE FINISHED

GENERAL NOTES ON DESIGN

HEIGHT CHANGES CALLED OUT IN ENLARGED DETAILS WITH ELEVATION MARKERS AND/OR DIMENSIONS LINES WHEN APPLICABLE

MATERIALS CALLED OUT WITH NUMERICAL TAG(S) THAT REFERENCE BACK TO MATERIAL LEGEND AND LIST MATERIALS

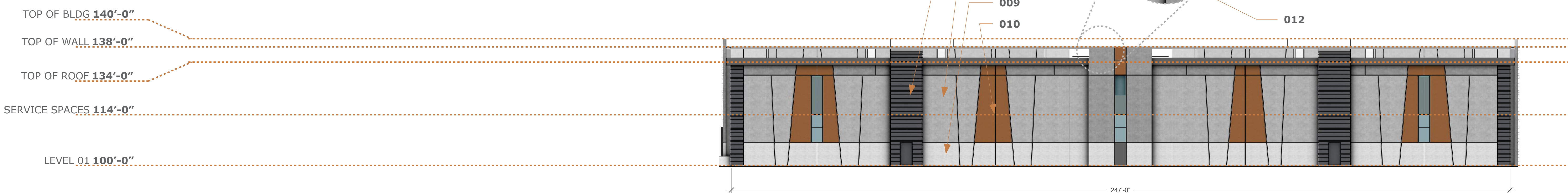
MATERIALS MAY APPEAR FADED THE FURTHER BACK THEY ARE LOCATED FROM THE MAIN FACADE OF THE ELEVATION

ELEVATION(S) MATERIALS PERCENTAGES

- .5 % DRI DESIGN METAL PANEL SYSTEM
- 13 % ACM METAL PANEL SYSTEM
- .5 % ANODIZED ALUMINUM METAL CURTAIN WALL
- 2.75 % VITRO VISTACOOOL REFLECTIVE BLUE
- .25 % SPANDREL PANEL SYSTEM
- 16 % STUCCO
- 15 % METALIC COATING
- 50 % CONCRETE FINISHED

MATERIALS LEGEND

- | | | | |
|---|---|--|---|
| 001 [Pattern] ACM METAL PANEL SYSTEM | 004 [Pattern] DRI-DESIGN METAL PANEL SYSTEM | 007 [Pattern] ACM METAL PANEL SYSTEM | 010 [Pattern] METALIC PAINT |
| 002 [Pattern] DRI-DESIGN ZINC PANEL SYSTEM | 005 [Pattern] VITRO VISTACOOOL REFLECTIVE BLUE | 008 [Pattern] ANODIZED ALUMINUM METAL | 011 [Pattern] METAL PANEL SYSTEM |
| 003 [Pattern] LOUVERED WALL SYSTEM | 006 [Pattern] SPANDREL PANEL SYSTEM | 009 [Pattern] STUCCO | 012 [Pattern] EXPOSED/PAINTED CONCRETE |



ELEVATIONS FACING CRISMON ROAD - DATA HALL OFFICES

SCALE 1/16" = 1'-0"

ELEVATION(S) MATERIALS PERCENTAGES

- % DRI DESIGN METAL PANEL SYSTEM
- 16 % ACM METAL PANEL SYSTEM
- % ANODIZED ALUMINUM METAL CURTAIN WALL
- % VITRO VISTACOOOL REFLECTIVE BLUE
- % SPANDREL PANEL SYSTEM
- 20 % STUCCO
- 14 % METALIC COATING
- 50 % CONCRETE FINISHED

GENERAL NOTES ON DESIGN

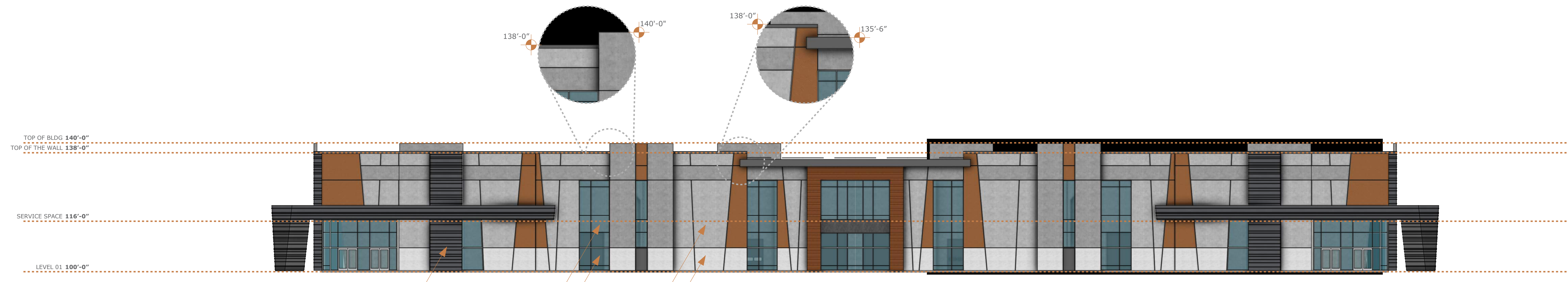
HEIGHT CHANGES CALLED OUT IN ENLARGED DETAILS WITH ELEVATION MARKERS AND/OR DIMENSIONS LINES WHEN APPLICABLE

MATERIALS CALLED OUT WITH NUMERICAL TAG(S) THAT REFERENCE BACK TO MATERIAL LEGEND AND LIST MATERIALS

MATERIALS MAY APPEAR FADED THE FATHER BACK THEY ARE LOCATED FROM THE MAIN FACADE OF THE ELEVATION

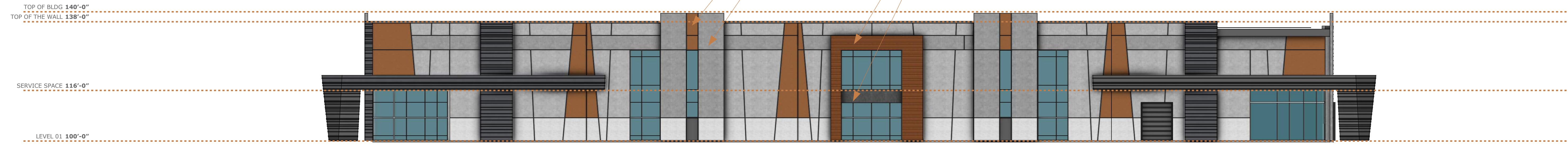
ELEVATION MATERIALS PERCENTAGES

- 40.5 % DRI DESIGN METAL PANEL SYSTEM
- 15 % ACM METAL PANEL SYSTEM
- % LOUVERED WALL SYSTEM
- 6.5 % ANODIZED ALUMINUM METAL CURTAIN WALL
- 30 % VITRO VISTACOOOL REFLECTIVE BLUE
- 8 % SPANDREL PANEL SYSTEM
- % MISC



WEST ELEVATIONS - WAREHOUSE

SCALE 1/16" = 1'-0"

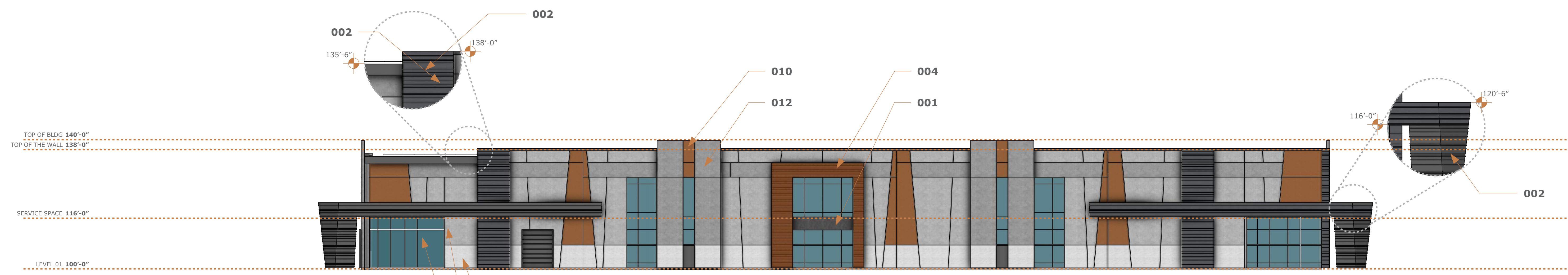


SOUTH ELEVATIONS - WAREHOUSE

SCALE 1/16" = 1'-0"

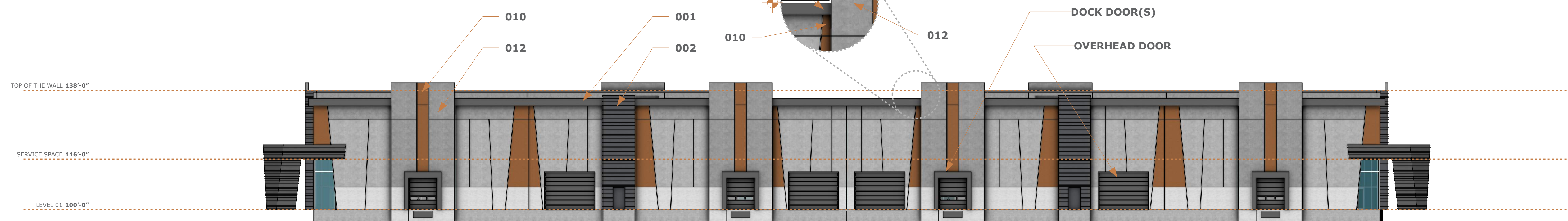
MATERIALS LEGEND

- | | | | |
|--|--|---|--|
| 001 [Color Swatch] ACM METAL PANEL SYSTEM | 004 [Color Swatch] DRI-DESIGN METAL PANEL SYSTEM | 007 [Color Swatch] ACM METAL PANEL SYSTEM | 010 [Color Swatch] METALIC PAINT |
| 002 [Color Swatch] DRI-DESIGN ZINC PANEL SYSTEM | 005 [Color Swatch] VITRO VISTACOOOL REFLECTIVE BLUE | 008 [Color Swatch] ANODIZED ALUMINUM METAL | 011 [Color Swatch] METAL PANEL SYSTEM |
| 003 [Color Swatch] LOUVERED WALL SYSTEM | 006 [Color Swatch] SPANDREL PANEL SYSTEM | 009 [Color Swatch] STUCCO | 012 [Color Swatch] EXPOSED/PAINTED CONCRETE |



NORTH ELEVATIONS - WAREHOUSE

SCALE 1/16" = 1'-0"



EAST ELEVATIONS - WAREHOUSE

SCALE 1/16" = 1'-0"

MATERIALS PERCENTAGES PER ELEVATION

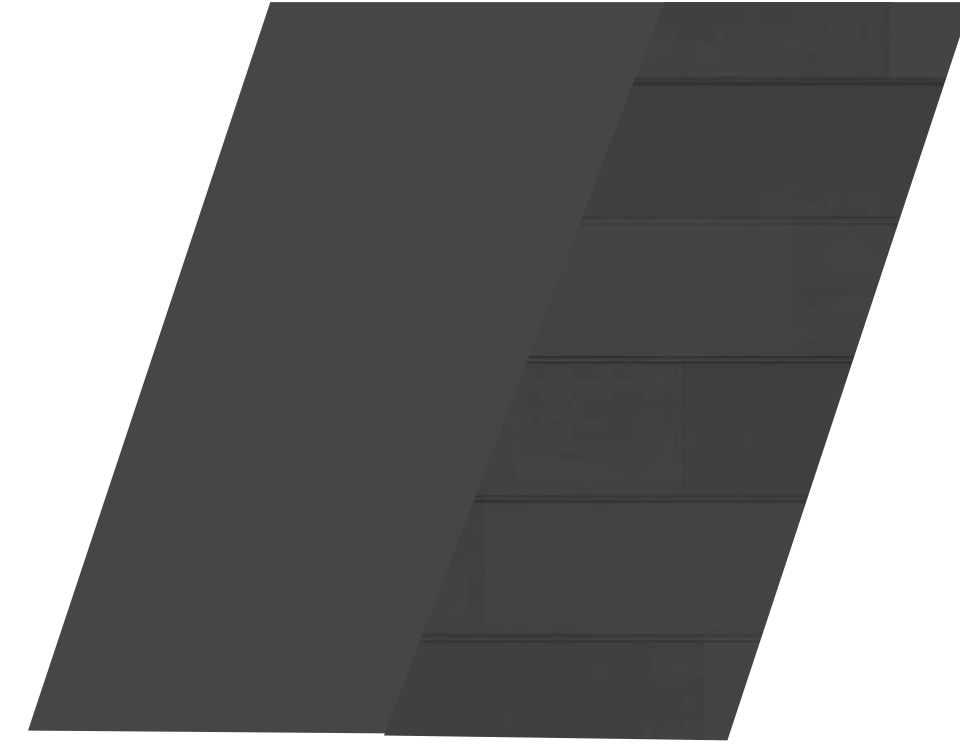
- 9.5 % DRI DESIGN METAL PANEL SYSTEM
- 12 % ACM METAL PANEL SYSTEM
- 1.5 % OPENINGS/DOORS
- 5 % ANODIZED ALUMINUM METAL CURTAIN WALL
- 17.5 % VITRO VISTACOOOL REFLECTIVE BLUE
- 7 % SPANDREL PANEL SYSTEM
- % FORM LINER CONCRETE
- 10 % SANDBLASTED CONCRETE
- 6 % METALIC PAINT
- 11.5 % TEXTURED PAINT
- 20 % PAINT

MATERIALS PERCENTAGES PER ELEVATION

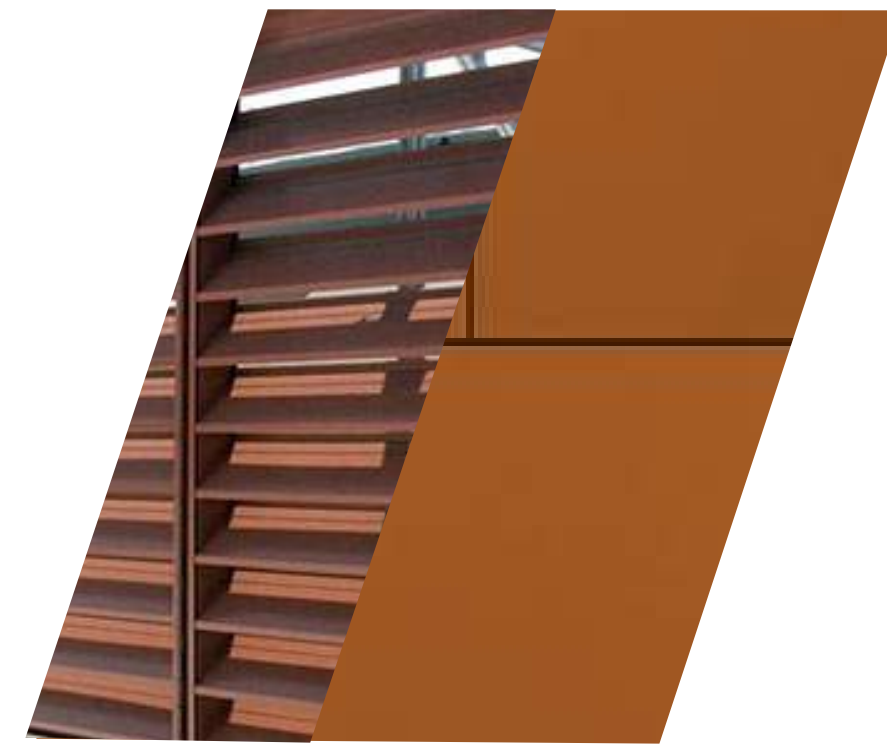
- 3.5 % DRI DESIGN METAL PANEL SYSTEM
- 13.5 % ACM METAL PANEL SYSTEM
- 14 % OPENINGS/DOORS
- .25 % ANODIZED ALUMINUM METAL CURTAIN WALL
- .2 % VITRO VISTACOOOL REFLECTIVE BLUE
- .25 % SPANDREL PANEL SYSTEM
- % FORM LINER CONCRETE
- 19.5 % SANDBLASTED CONCRETE
- 15 % METALIC PAINT
- 12 % TEXTURED PAINT
- 20 % PAINT

MATERIALS LEGEND

- 001 ACM METAL PANEL SYSTEM
- 002 DRI-DESIGN ZINC PANEL SYSTEM



- 004 DRI-DESIGN METAL PANEL SYSTEM
- 003 LOUVERED WALL SYSTEM



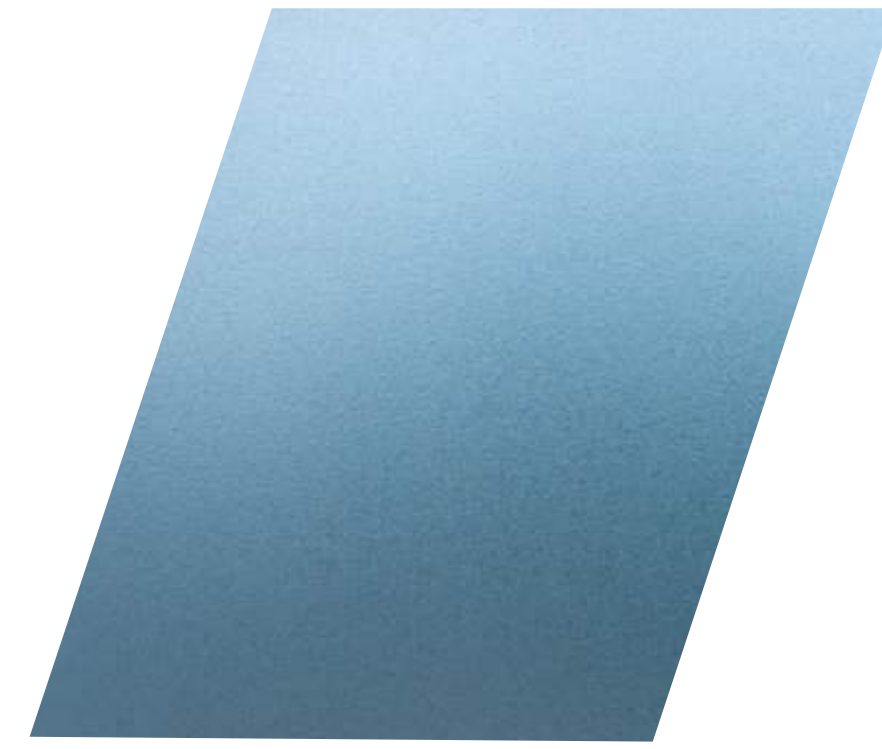
- 007 ACM METAL PANEL SYSTEM



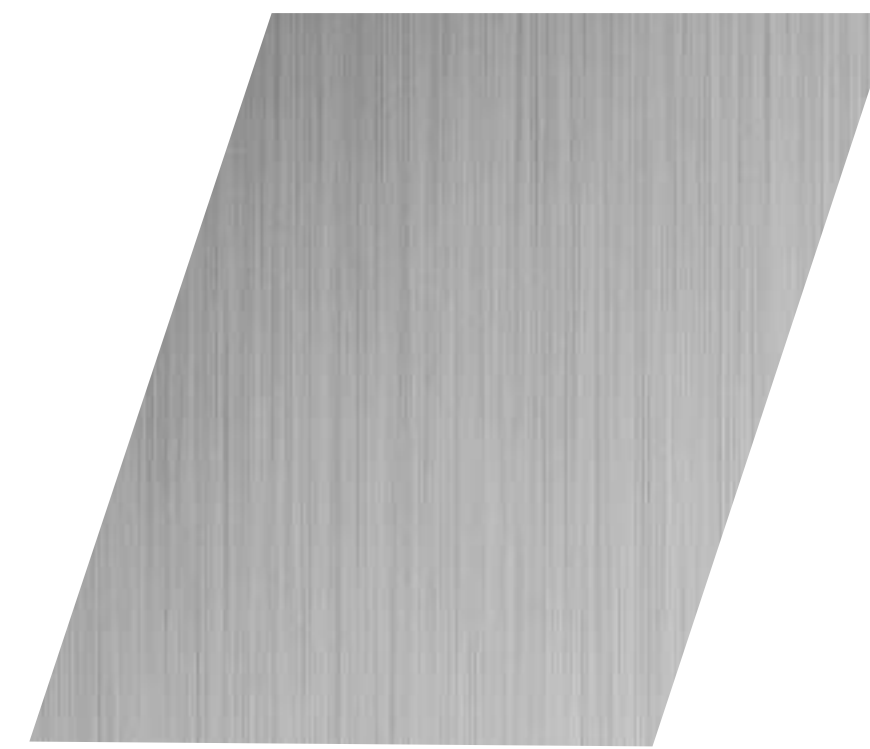
- 010 METALIC PAINT



- 005 VITRO VISTACOOOL REFLECTIVE BLUE
- 006 SPANDREL PANEL SYSTEM



- 008 ANODIZED ALUMINUM METAL



- 011 METAL PANEL SYSTEM

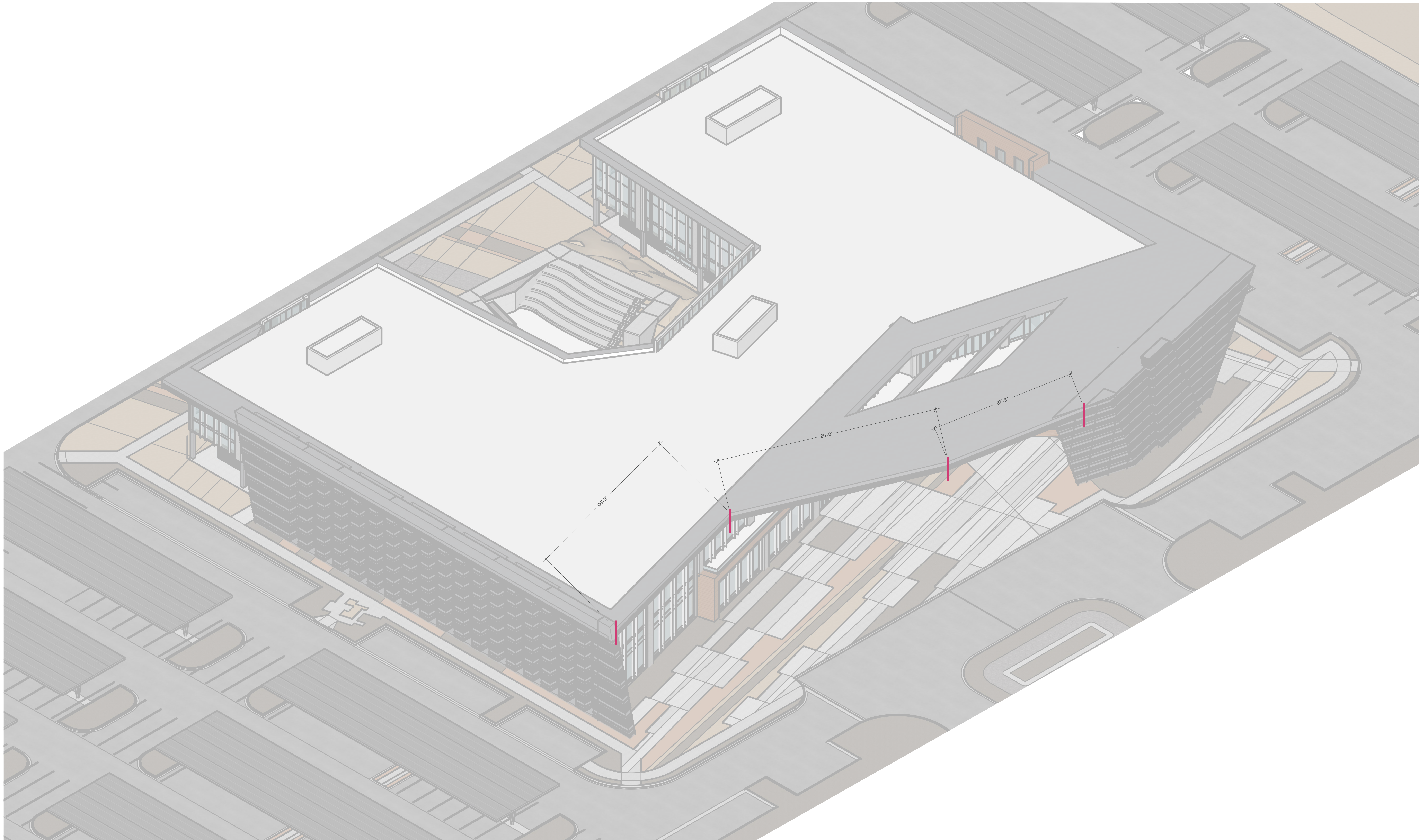


- 009 STUCCO

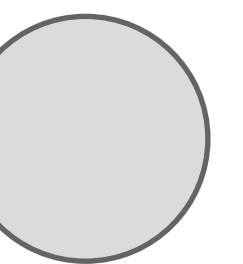


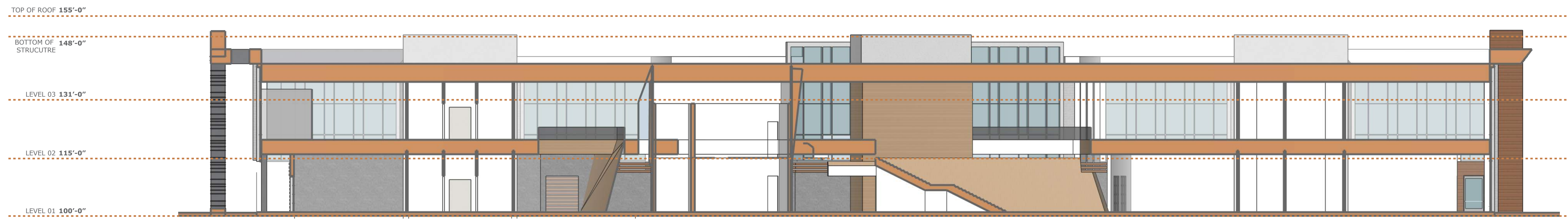
- 012 EXPOSED/PAINTED CONCRETE





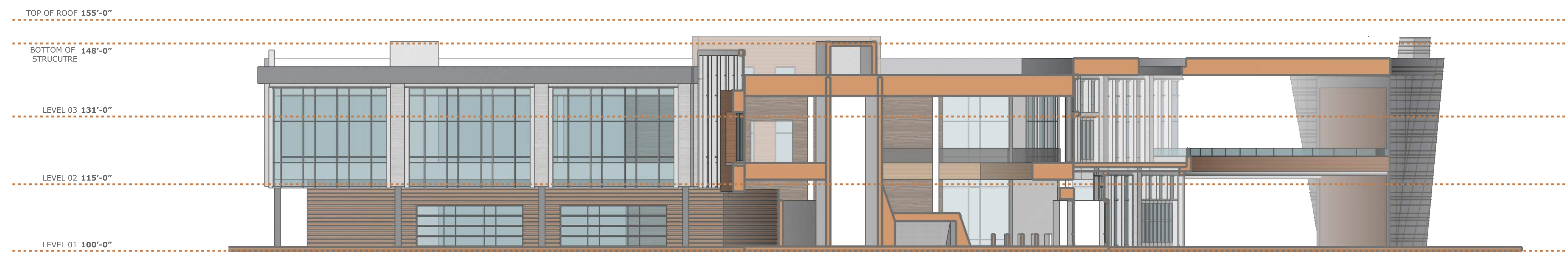
BUILDING SECTION 'A'
SCALE 1/16" = 1'-0"





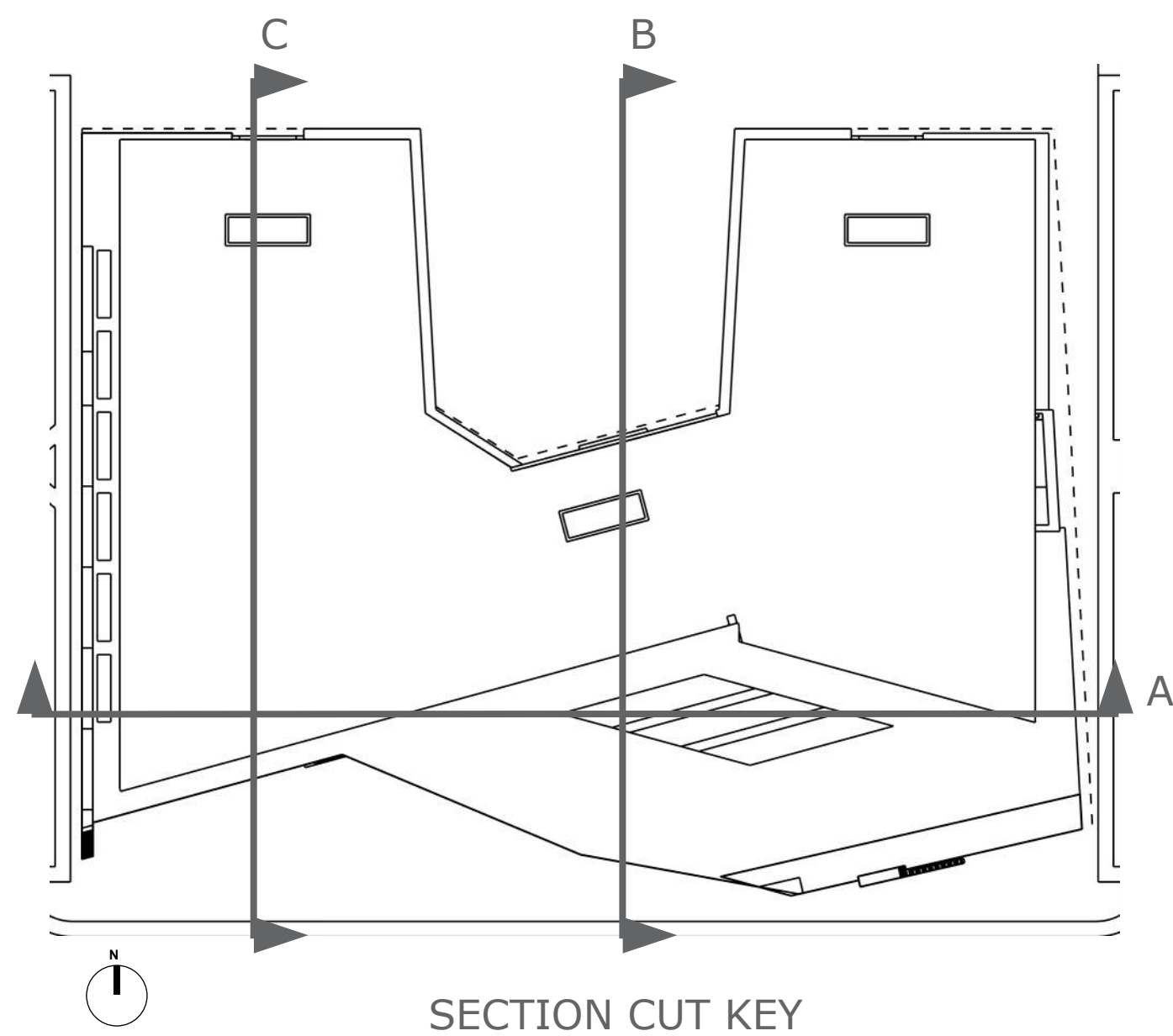
BUILDING SECTION 'A'

SCALE 1/16" = 1'-0"



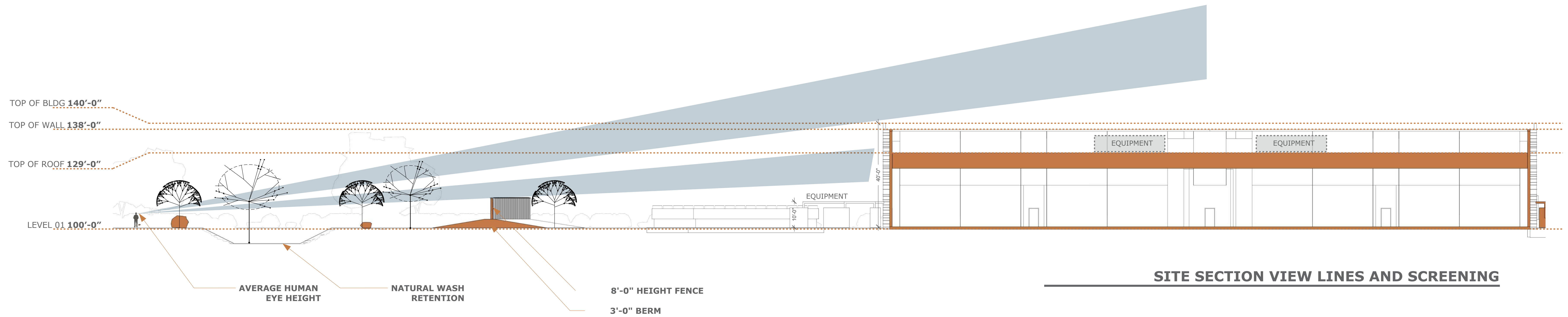
BUILDING SECTION 'B'

SCALE 1/16" = 1'-0"

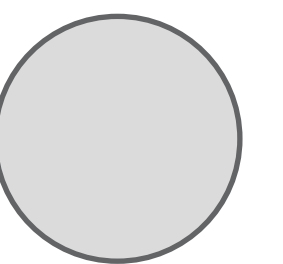


BUILDING SECTION 'C'

SCALE 1/16" = 1'-0"



VIEW FROM PECOSA RD

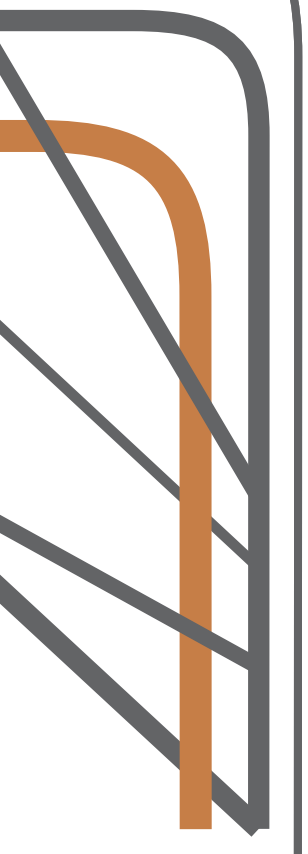




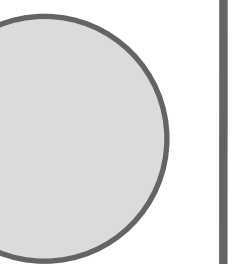
AMENITY RETENTION - AFTER RAIN STORM



AMENITY RETENTION - TYPICAL DRY



**222 ND PECOS ROAD
PROJECT**

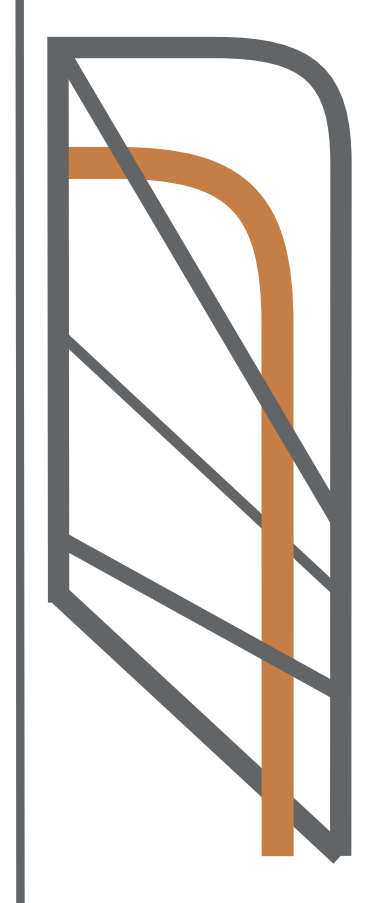


PROJECT NO.
ISSUE
06.14.2024

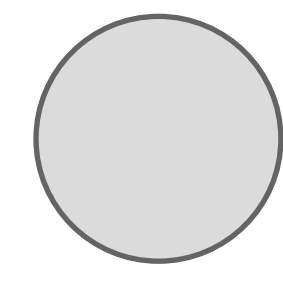
**CONCEPT RENDERING
AMENITIES CENTER
ISLAND**

A

8.0



**222 ND PECOS ROAD
PROJECT**

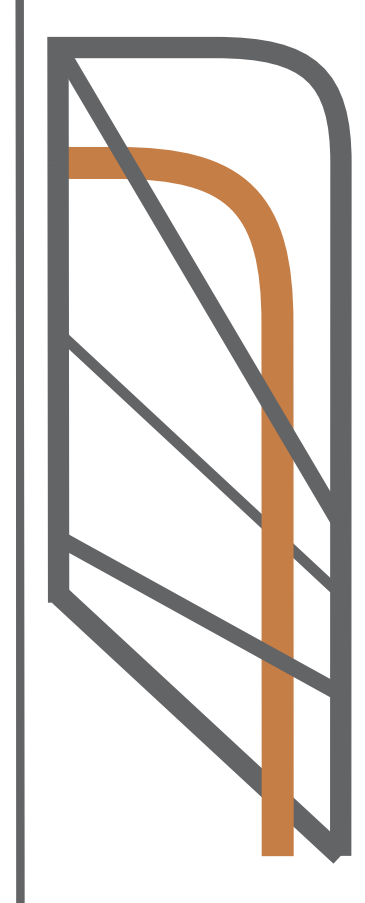


PROJECT NO.
ISSUE
06.14.2024

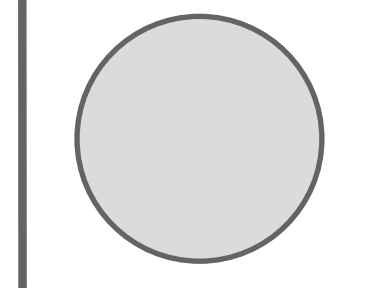
**CONCEPT RENDERING
OFFICE BUILDING 01**

A

8.1



**222 ND PECOS ROAD
PROJECT**

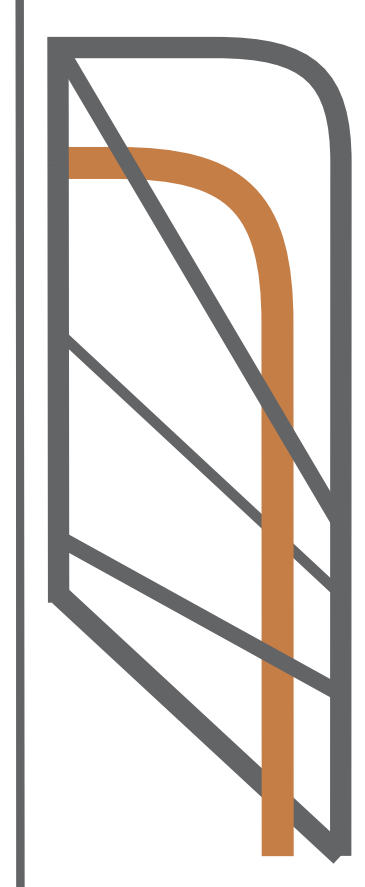


PROJECT NO.
ISSUE
06.14.2024

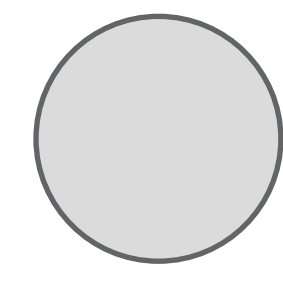
**CONCEPT RENDERING
OFFICE BUILDING 02**

A

8.2



**222 ND PECOS ROAD
PROJECT**

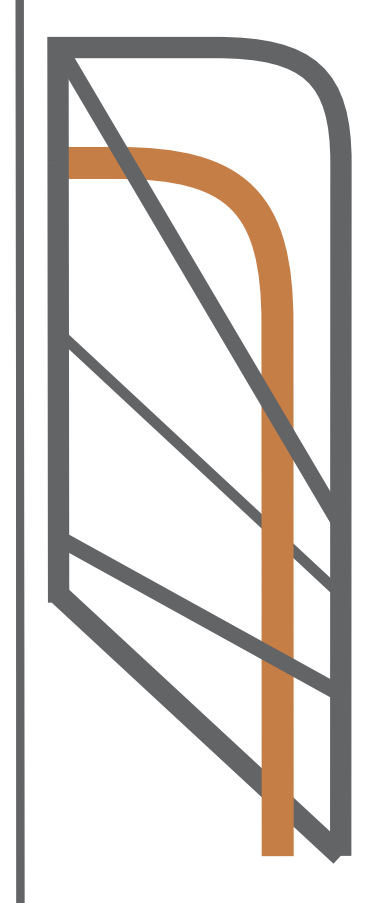


PROJECT NO.
ISSUE
06.14.2024

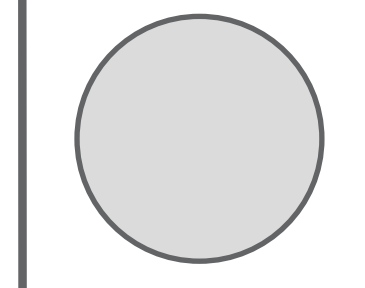
**CONCEPT RENDERING
DATA HALL**

A

8.3



**222 ND PECOS ROAD
PROJECT**



PROJECT NO.
ISSUE
06.14.2024

**CONCEPT RENDERING
WAREHOUSE**

A

8.4