



Design Review Board



DRB24-00100

Stonebridge

Live-Work Units

Charlotte Bridges, Planner II

August 13, 2024



Request

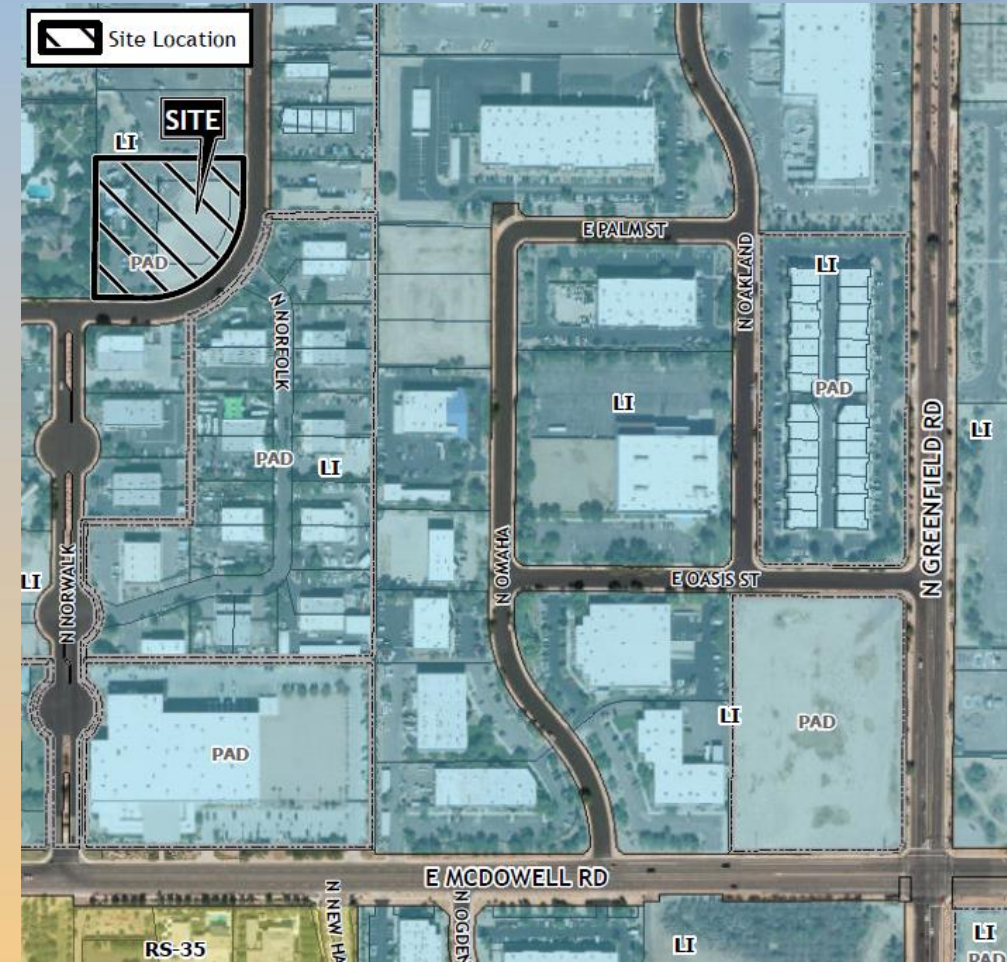
- Design Review
- To allow for Live-Work Units





Location

- 4000 block of East Palm St (north side)
- 2900-3000 blocks of North Norfolk (west side)
- East of Greenfield Road
- North of McDowell Road





Site Photo



Looking north from Palm Street



Site Photo

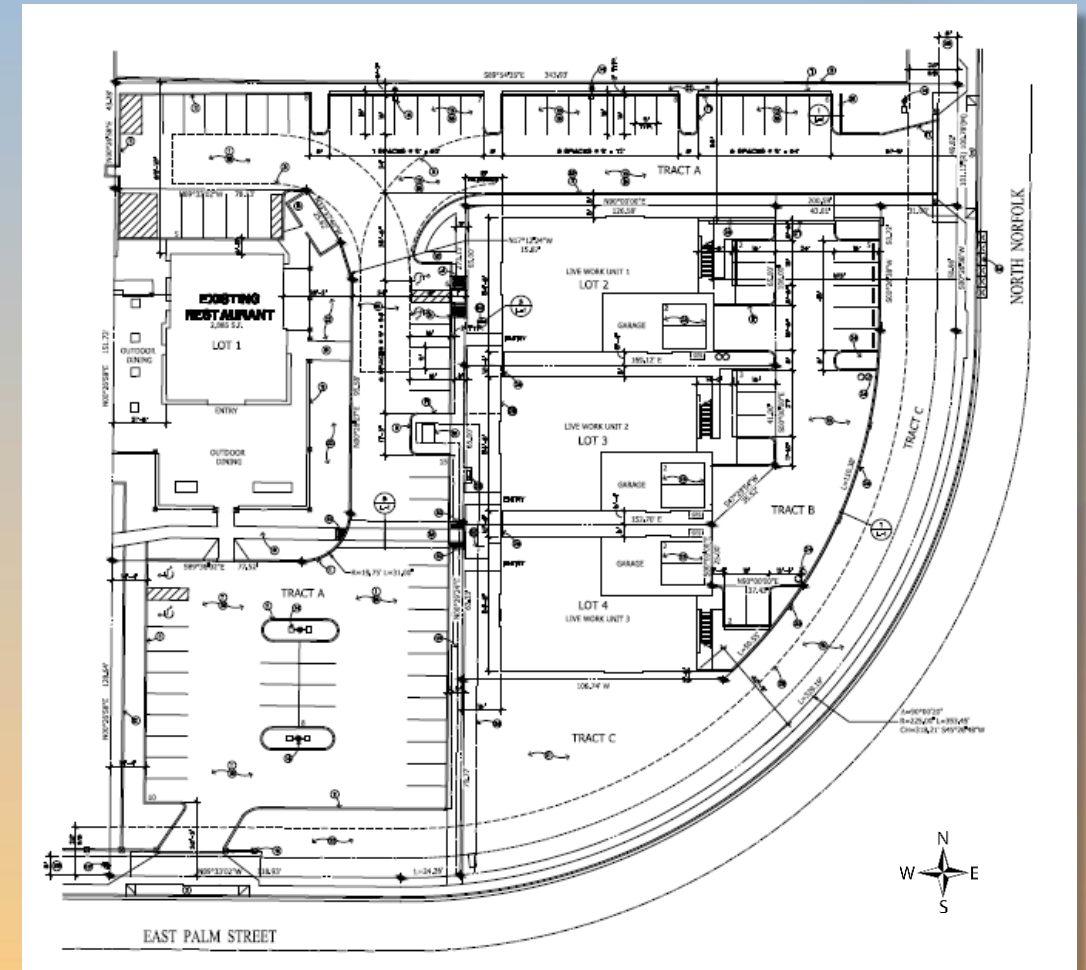


Looking west from Norfolk



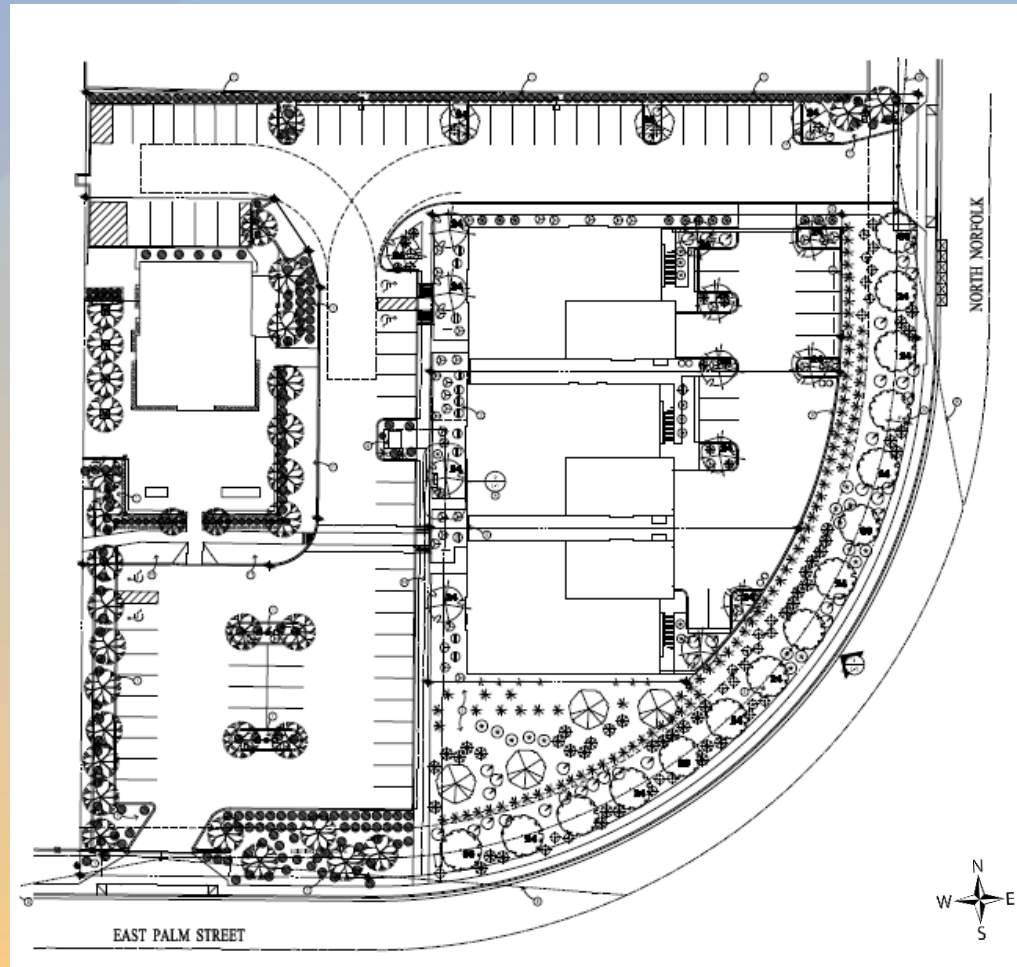
Site Plan

- Existing 2,885 sq. ft. restaurant
- 3, 2-story, 7,716 sq. ft. Live-Work Units
- Existing access Palm Street and Norfolk
- 91 parking spaces provided





Landscape Plan



PLANT LEGEND						
SYMBOL:	COMMON NAME:	BOTANICAL NAME:	SIZE:	QNT:	AREA:	SUB TOTAL
TREES:						
	FRUITLESS OLIVE	<i>Olea Europaea</i> Wimper	36" box	1	100	100
			24" box	2	100	200
			15 gal	4	100	400
	LIVE OAK	<i>Quercus Virginia</i>	24" box	11	100	1100
	CHINESE PISTACHE	<i>Pistacia Chinensis</i>	36" box	4	100	400
			24" box	8	100	800
			15 gal	3	100	300
SHRUBS:						
	LANGMANS SAGE	<i>Leucophyllum</i> <i>Langmaniae</i> 'Rio Bravo'	5 Gal.	39	25	975
	REGAL MIST	<i>Muhlenbergia</i> <i>Capillaris</i>	5 Gal.	63	25	2375
	UPRIGHT ROSEMARY	<i>Rosmarinus</i> <i>Officinalis</i> 'Tuscan Blue'	5 Gal.	31	20	620
	NATAL PLUM	<i>Carissa macrocarpa</i> boxwood beauty	5 Gal.	46	10	460
	SPARKY TECOMA	<i>Tecoma x 'Sparky'</i>	5 Gal.	13	25	325
	AUTUMN SAGE	<i>Salvia greggii</i>	5 Gal.	11	10	110
GROUNDCOVERS & ACCENTS:						
	GOLDEN MOUNDING LANTANA	<i>Lantana</i> 'Gold Mound'	1 Gal.	24	10	240
	RED LANTANA	<i>Lantana</i> 'Dallas Red'	1 Gal.	62	10	520
	RED YUCCA	<i>Hesperaloe parviflora</i>	5 Gal.	7	25	175
						TOTAL 8,990
	EXISTING TREE					
	EXISTING SHRUB - LARGE					
	EXISTING SHRUB - SMALL					



Elevations



		FACADE MATERIAL CALCULATIONS							
		WEST ELEVATION		SOUTH ELEVATION		NORTH ELEVATION		EAST ELEVATION	
SYMBOL	MATERIAL	AREA	PERCENT	AREA	PERCENT	AREA	PERCENT	AREA	PERCENT
①	STUCCO	279 SF	21	997 SF	50	549 SF	27	553 SF	43
②	METAL SIDING	317 SF	25	186 SF	9	385 SF	19	251 SF	19
③	USED BRICK	390 SF	31	447 SF	24	400 SF	22		
④	WINDOWS/STOREFRONT DOORS	228 SF	18	272 SF	14	594 SF	29	232 SF	18
⑤	METAL	62 SF	5	70 SF	3	61 SF	3	40 SF	3
⑥	OVERHEAD DOOR							224 SF	17
		1261 SF	100	1973 SF	100	2046 SF	100	1301 SF	100





Elevations

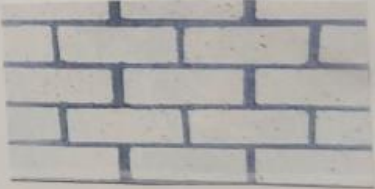



		FACADE MATERIAL CALCULATIONS							
		WEST ELEVATION		SOUTH ELEVATION		NORTH ELEVATION		EAST ELEVATION	
SYMBOL	MATERIAL	AREA	PERCENT	AREA	PERCENT	AREA	PERCENT	AREA	PERCENT
①	STUCCO	279 SF	21	997 SF	50	549 SF	27	553 SF	43
②	METAL SIDING	317 SF	25	186 SF	9	388 SF	19	261 SF	19
③	USED BRICK	390 SF	31	447 SF	24	450 SF	22		
④	WINDOWS/STOREFRONT DOORS	228 SF	18	273 SF	14	594 SF	29	223 SF	16
⑤	METAL	62 SF	5	70 SF	3	61 SF	3	40 SF	3
⑥	OVERHEAD DOOR							224 SF	17
		1261 SF	100	1973 SF	100	2046 SF	100	1301 SF	100



Colors and Materials

<u>ITEM</u>	<u>COLOR</u>	<u>SAMPLE</u>
1 - STUCCO	SHERWIN WILLIAMS SW #7005 PURE WHITE	
2 - METAL SIDING	AEP SPAN OLD TOWN GRAY	

3 - USED BRICK	CORNADO STONE WHITE	
6 - STUCCO	SHERWIN WILLIAMS SW #6258 TRICORN BLACK	



Renderings





Renderings





Findings

Staff is seeking your review and recommendation on the following:

- ✓ Proposed building elevations and landscape design

Staff welcomes any feedback



Design Review Board