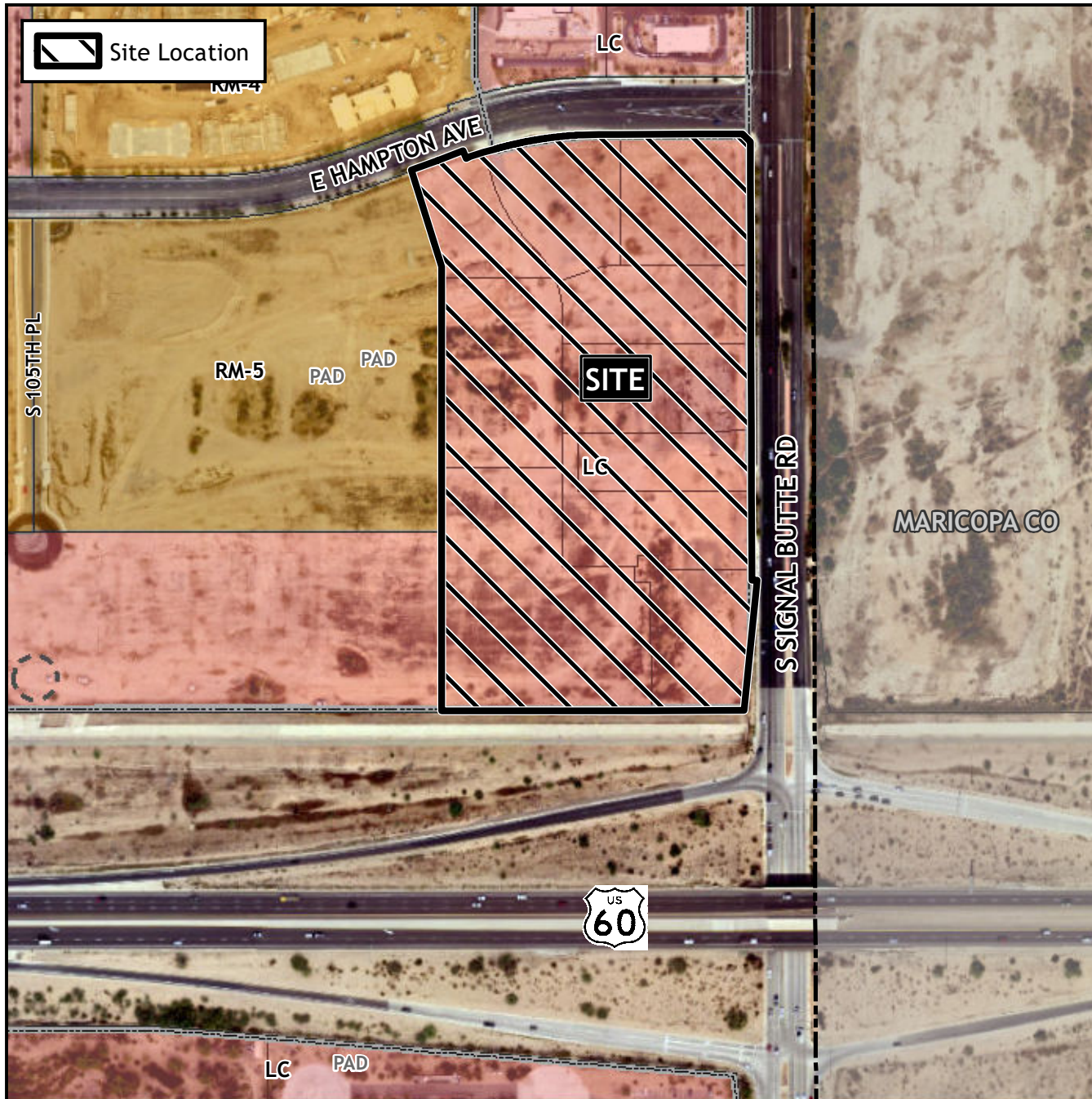


Planning and Zoning Vicinity Map: ZON22-00350



Case Details

CASE:

ZON22-00350

PRE-PLAT : ☐

SITE / ADDRESS:

District 5. Within the 10700 block of East Hampton Avenue (south side) and within the 1400 to 1600 block of South Signal Butte Road (west side). Located north of the US 60 Superstition Freeway on the west side of Signal Butte Road (15± acres).

REQUEST:

Site Plan Modification. This request will allow for a mixed-use development.

