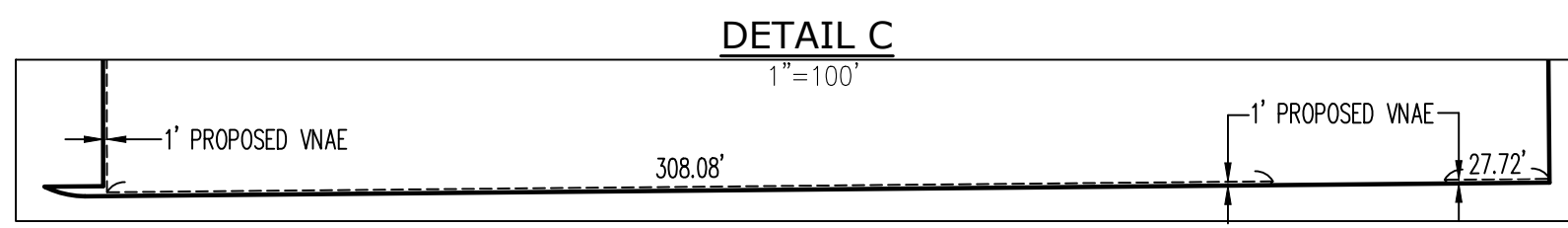
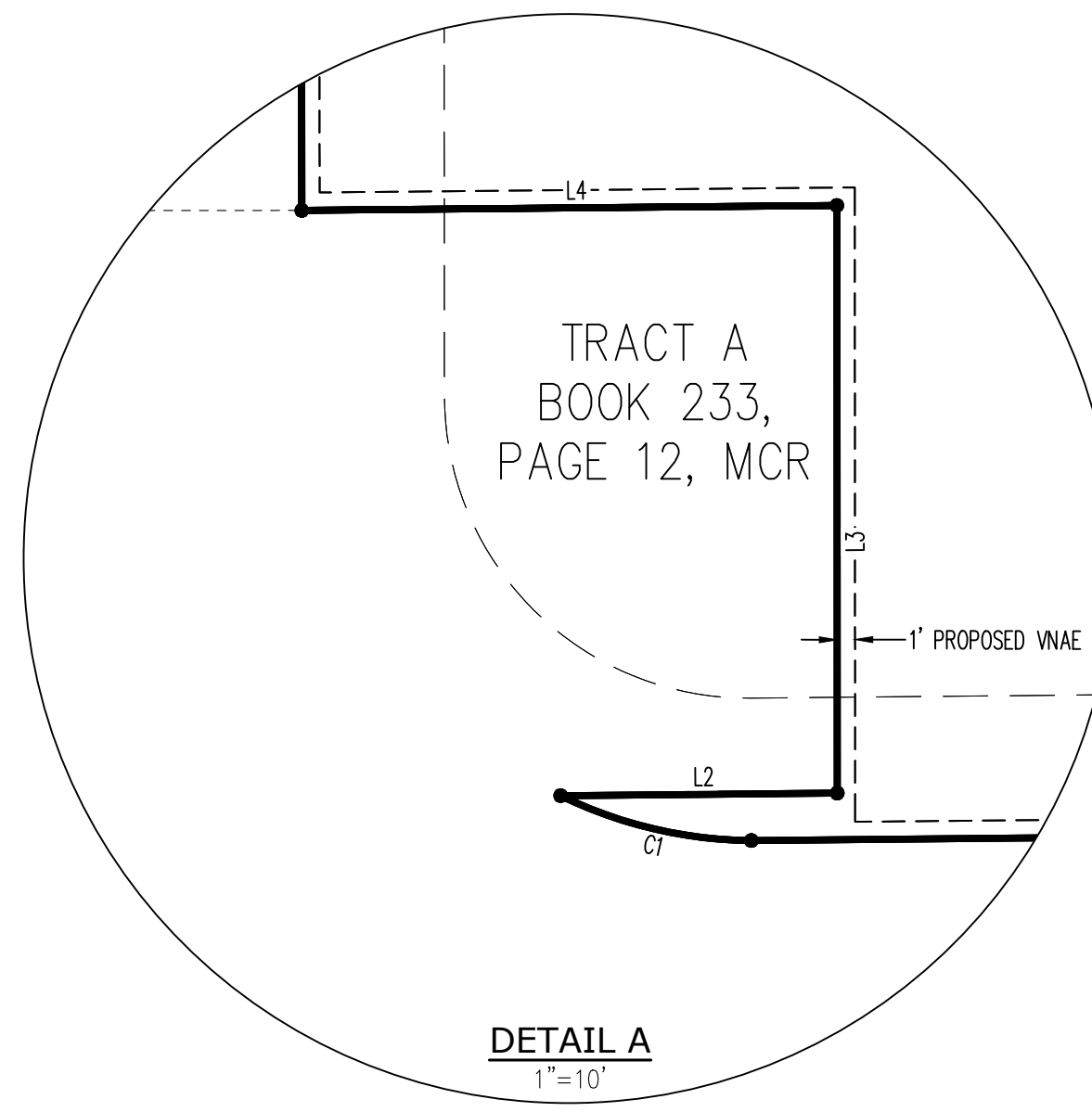
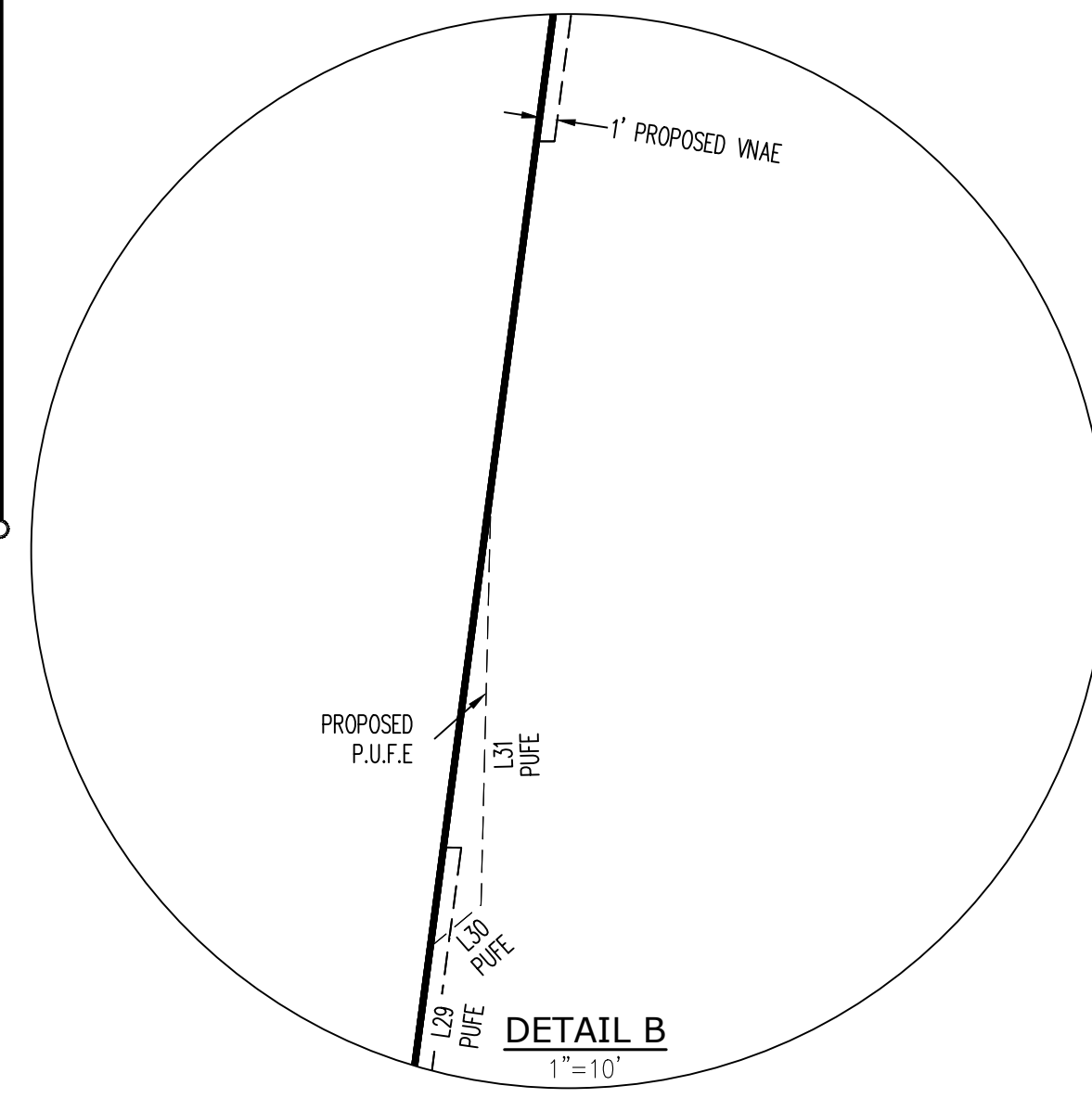
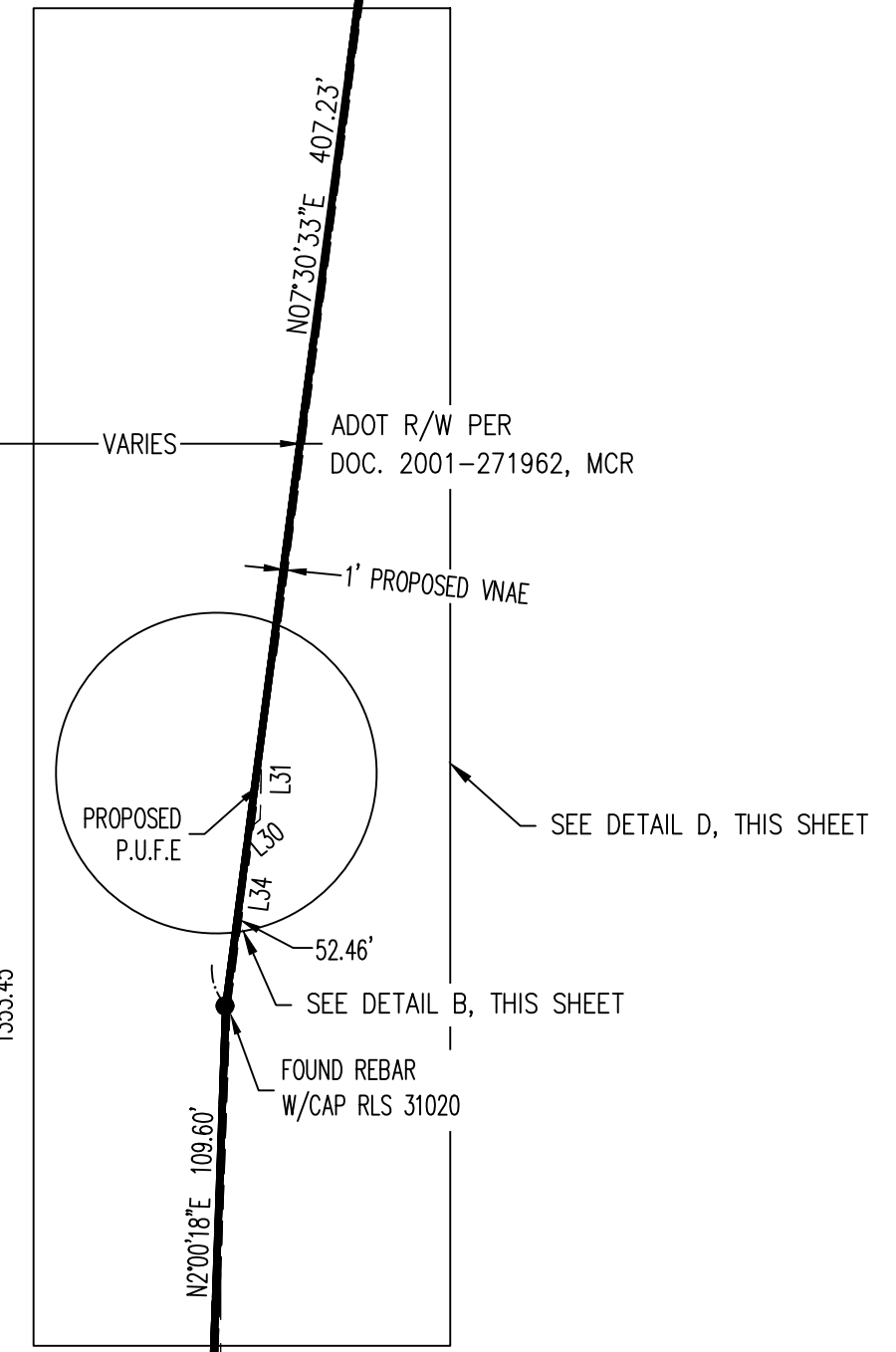
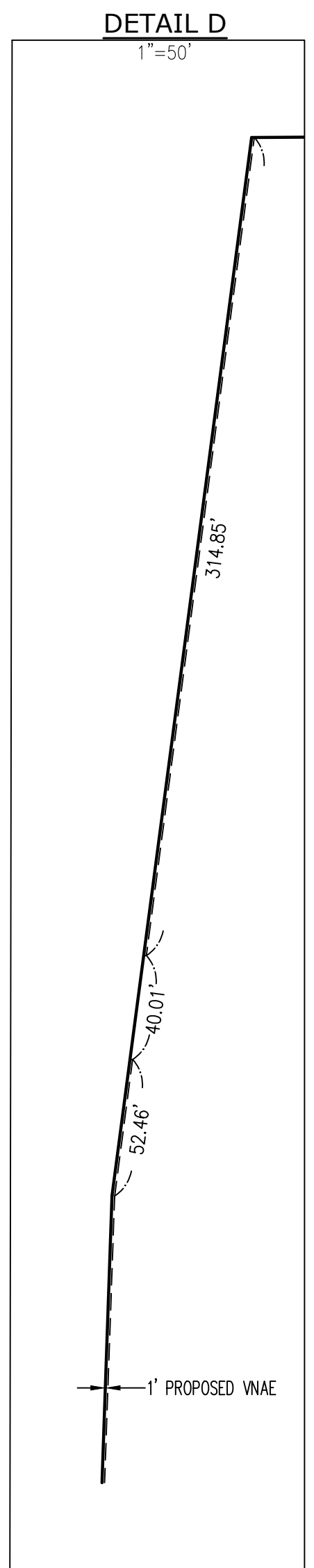
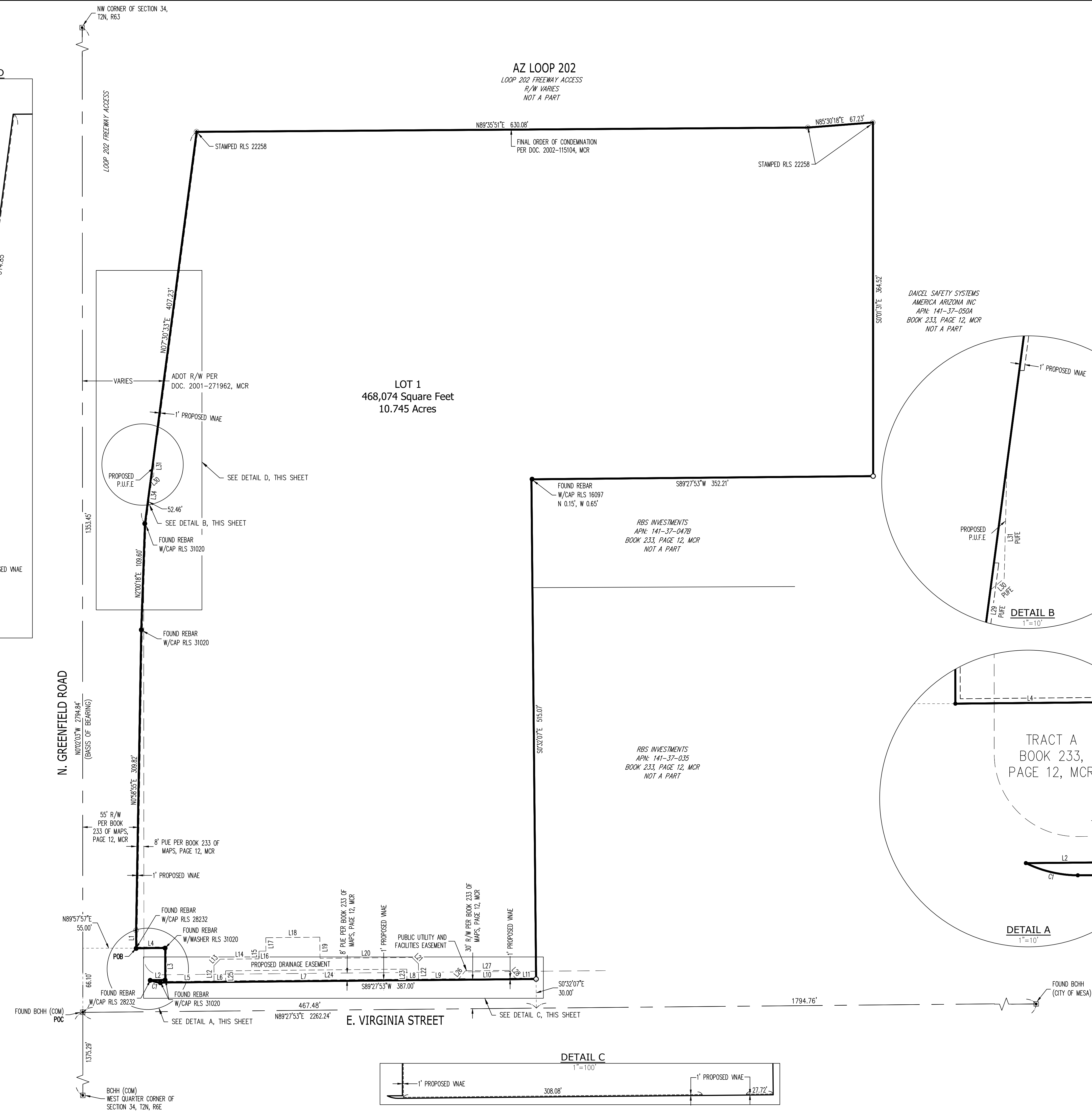




Sep 04, 2020 8:00am S:\Projects\2018\18-607\Legal Survey\Drawings\Final Plat\18-607 Plat.dwg smartin



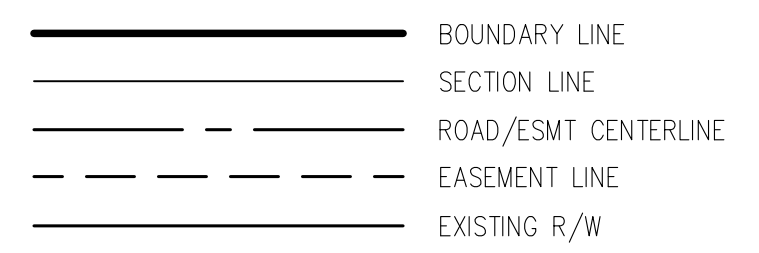
**AZ LOOP 202**  
 LOOP 202 FREEWAY ACCESS  
 R/W VARIES  
 NOT A PART

**LOT 1**  
 468,074 Square Feet  
 10.745 Acres

**N. GREENFIELD ROAD**  
 110°21'03"W 2754.94'  
 (BASIS OF BEARING)

**E. VIRGINIA STREET**

- LEGEND**
- FOUND BRASS CAP IN HAND HOLE AS NOTED
  - FOUND BRASS CAP FLUSH AS NOTED
  - SET 1/2" REBAR W/CAP "RLS 37495"
  - FOUND MONUMENT AS NOTED
  - ESMT EASEMENT
  - R/W RIGHT OF WAY
  - BCHH BRASS CAP IN HAND HOLE
  - BCFL BRASS CAP FLUSH
  - ADOT ARIZONA DEPARTMENT OF TRANSPORTATION
  - MCR MARICOPA COUNTY RECORDER
  - DOC. DOCUMENT
  - PUE PUBLIC UTILITY EASMENT
  - PUFE PUBLIC UTILITY & FACILITIES EASEMENT
  - APN ASSESSORS PARCEL NUMBER
  - COM CITY OF MESA
  - POC POINT OF COMMENCEMENT
  - POB POINT OF BEGINNING
  - P PARCEL
  - (R) RECORD (BOOK 233, PAGE 12, MCR)
  - R/W RIGHT OF WAY
  - VNAE VEHICLE NON-ACCESS EASEMENT



LINE TABLE			LINE TABLE		
LINE	BEARING	LENGTH	LINE	BEARING	LENGTH
L1	N00°02'03"W	18.35'	L17	N00°32'07"W	13.83'
L2	N89°27'53"E	15.53'	L18	N89°27'53"E	55.68'
L3	N00°02'03"W	33.00'	L19	S00°32'08"E	21.75'
L4	S89°27'53"W	30.04'	L20	N89°27'57"E	94.86'
L5	N89°27'53"E	55.10'	L21	S45°32'03"E	9.21'
L6	N89°27'53"E	12.00'	L22	S00°32'07"E	16.93'
L7	N89°27'53"E	186.78'	L23	N00°32'07"W	11.44'
L8	N89°27'53"E	12.00'	L24	S89°27'57"W	186.78'
L9	N89°27'53"E	40.68'	L25	S00°32'07"E	11.45'
L10	N89°27'53"E	60.18'	L26	N39°21'32"E	11.98'
L11	N89°27'53"E	20.26'	L27	N89°31'58"E	44.63'
L12	N00°32'07"W	16.93'	L28	S41°16'42"E	12.06'
L13	N44°27'57"E	9.21'	L29	N07°30'33"E	46.75'
L14	N89°27'57"E	40.04'	L30	N50°22'45"E	3.70'
L15	N00°32'11"W	7.92'	L31	N01°23'18"E	23.62'
L16	N89°27'53"E	7.17'			

CURVE TABLE				
CURVE	LENGTH	RADIUS	DELTA	CHORD BRC
C1	11.09'	25.00'	25°24'59"	11.00'
				N76°45'23"W

1130 N. Alma School Rd, Suite 120  
 Mesa, AZ 85201  
 T: 480.503.2250 | F: 480.503.2258  
 www.epsgroupinc.com

**EPS GROUP**

**GREENFIELD INDUSTRIAL**  
 MESA, ARIZONA  
**FINAL PLAT**

Project: \_\_\_\_\_

Revisions: \_\_\_\_\_

Call it first! Don't start working before you begin recording.

**ARIZONA 611**  
 Due to a fire at 4800 E. McDowell Rd. (102-6348) in Maricopa County (800-283-1109)

Drawn by: R.J.  
 Reviewed by: S.R.

REGISTERED LAND SURVEYOR  
 37495  
 ROBERT A. JOHNSTON  
 (S)

Job No.  
**18-607**

**FP01**

Sheet No.  
**2 of 2**

