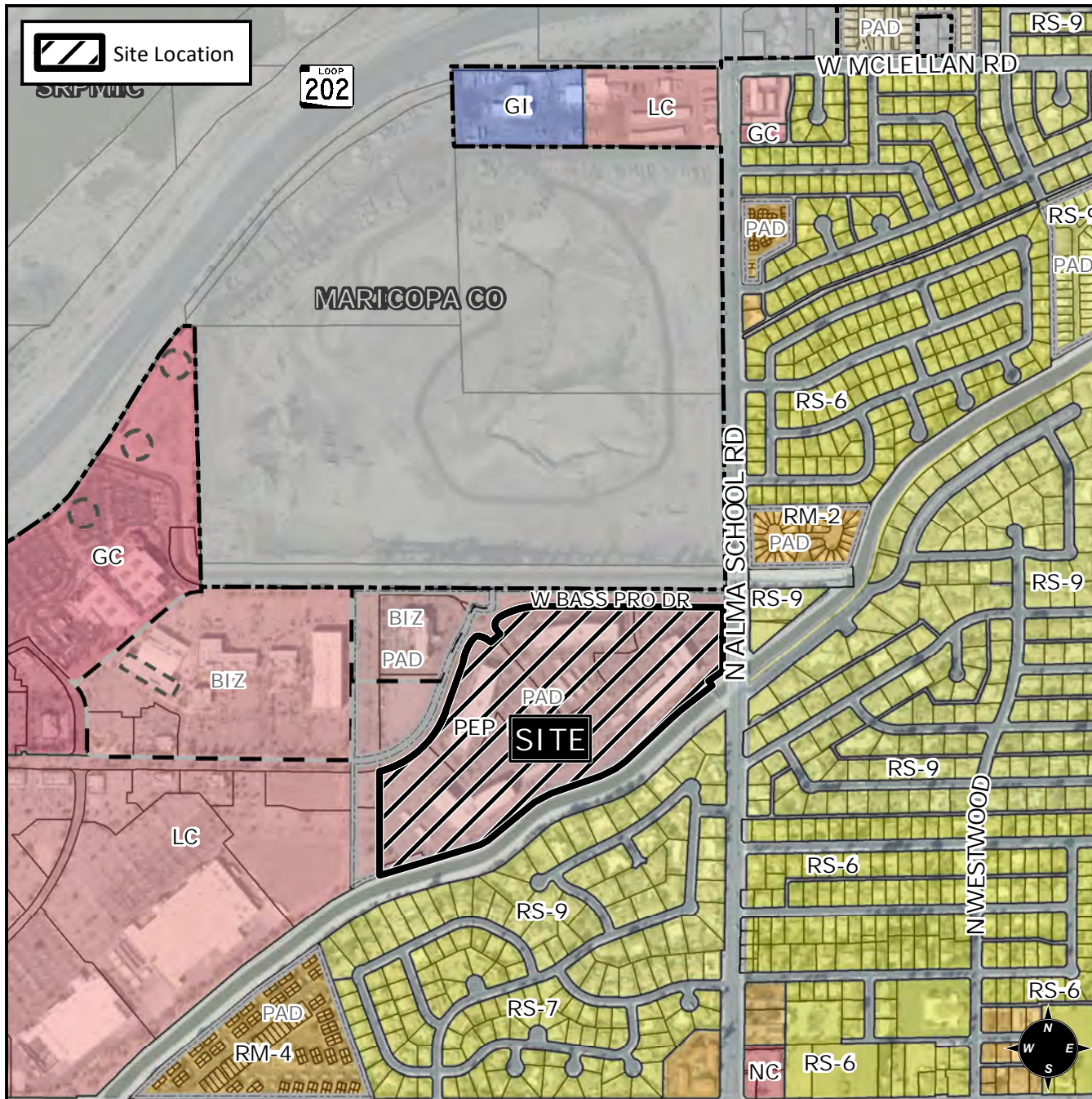


Planning and Zoning Vicinity Map: ZON20-00538



Case Details

CASE: ZON20-00538 PRE-PLAT :

SITE / ADDRESS:

District 1. Within the 1200 to 1400 blocks of West Bass Pro Drive (south side) and the 1100 block of North Alma School Road (west side). Located south of the 202 Red Mountain Freeway on the west side of Alma School Road. (30.9± acres)

REQUEST:

Modification to the Planned Area Development (PAD) Overlay on the property to amend condition #1 of Ordinance No. 4847 to allow development of a new office building and parking garage within an existing office development.

