



Design Review Board



DRB24-00484

Fire Station 224

Josh Grandlienard, Senior Planner

July 9, 2024



Request

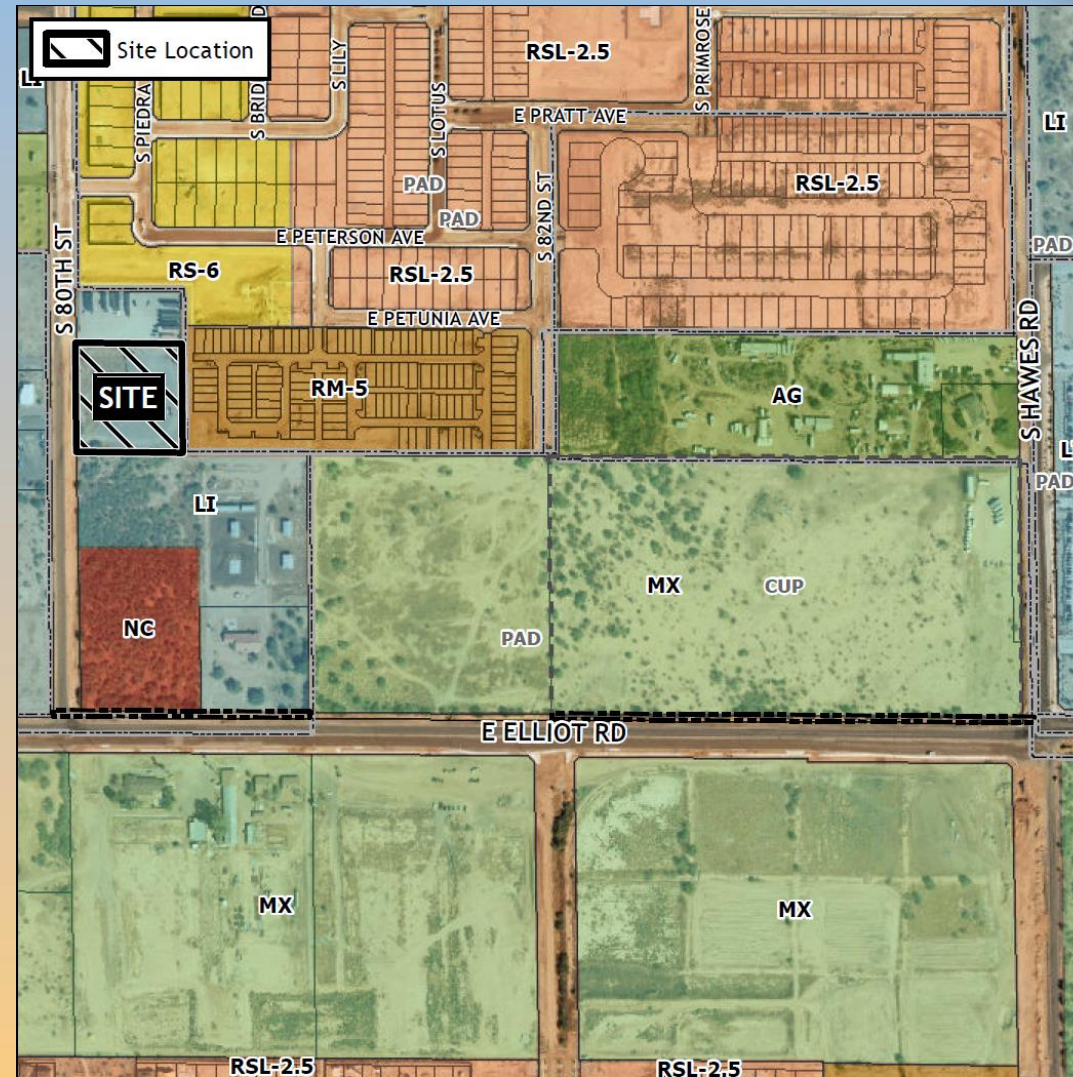
- Design Review
- To allow for a new Fire Station





Location

- West of Hawes Road
- North of Elliot Road
- East of 80th Street





Site Photo

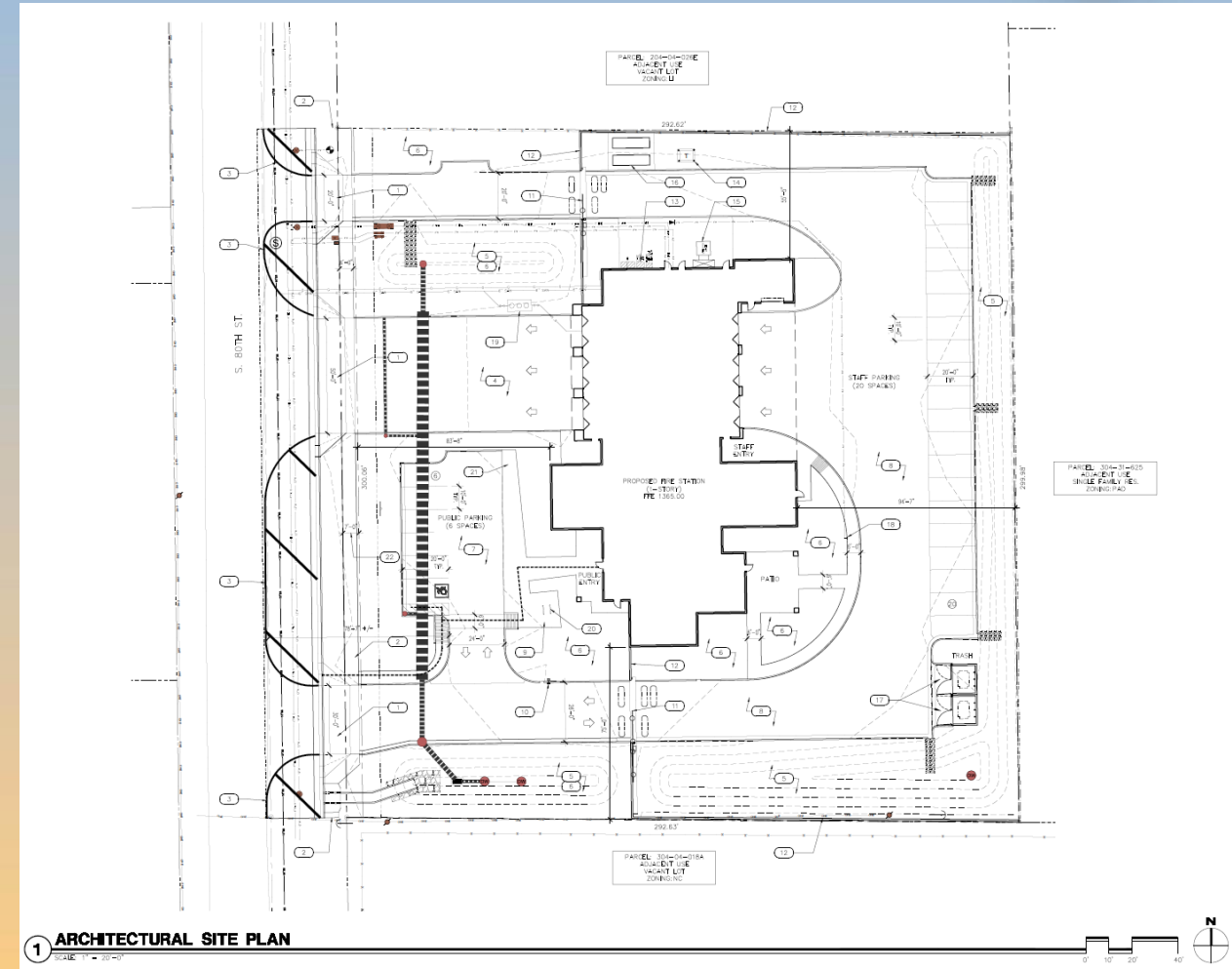


Looking east from 80th Street



Site Plan

- Fire Station with 3 bay doors
- Vehicular access to the site is provided from S 80th Street
- 26 parking spaces provided

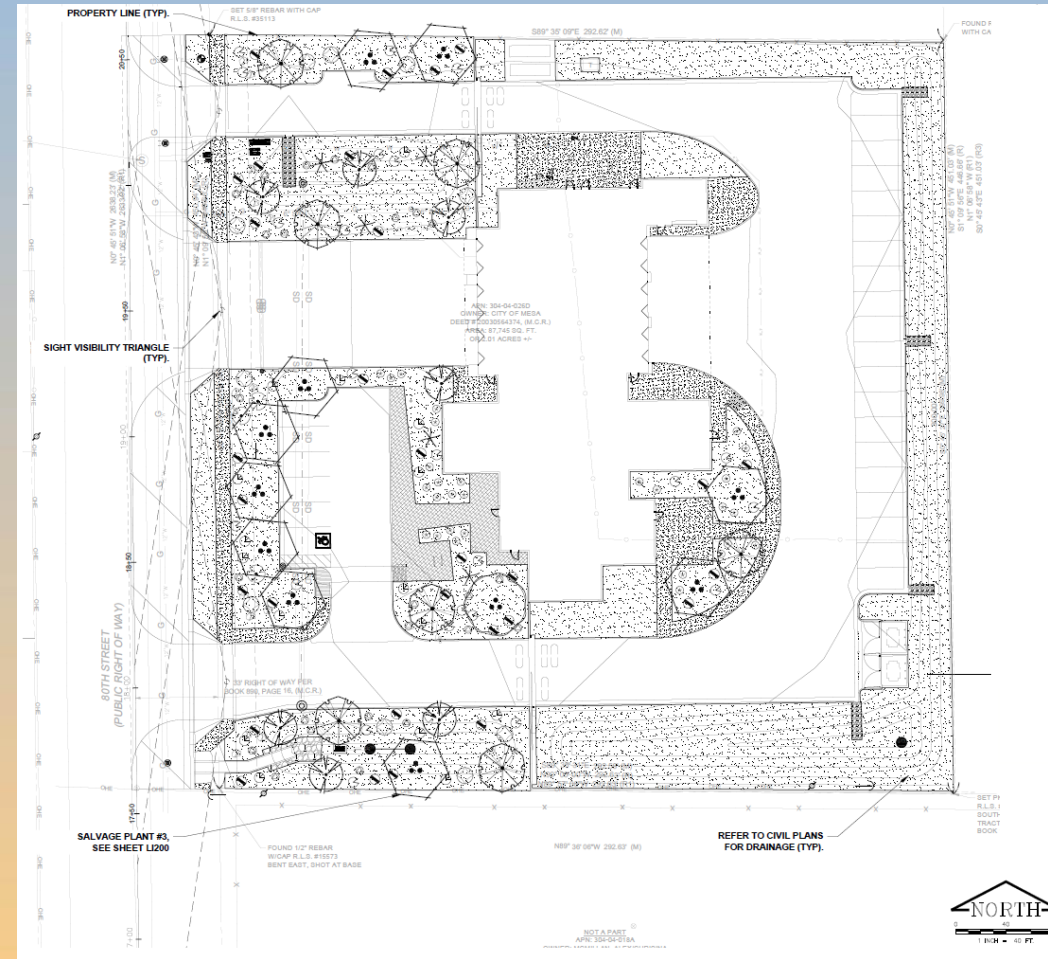




Landscape Plan

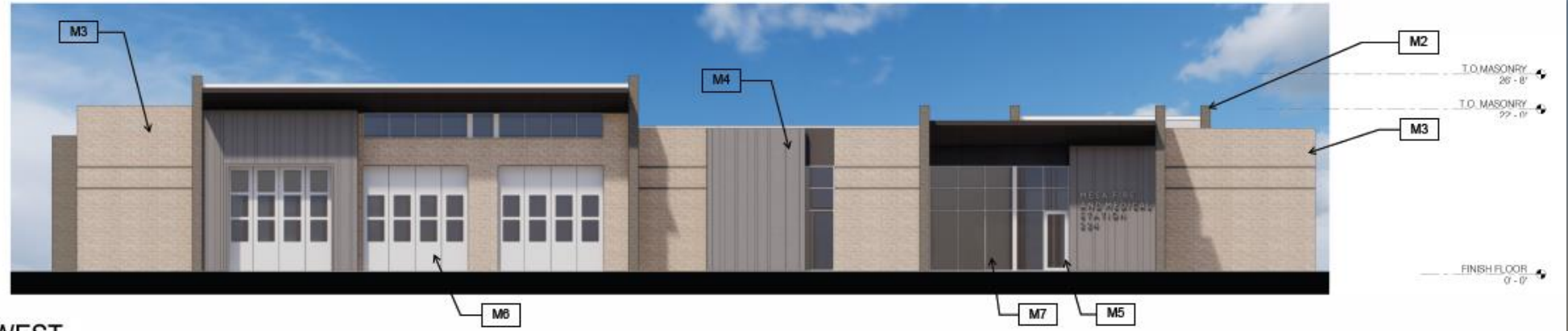
LANDSCAPE SCHEDULE

SYMBOL	BOTANICAL NAME	COMMON NAME	CONT.	GAL.	QTY.
TREES					
	CAESALPINIA CACALACO 'SMOOTHIE'™	SMOOTHIE CASCALOTE	24" BOX		8
	CHILOPSIS LINEARIS	DESERT WILLOW	24" BOX		8
	OLNEYA TESOTA	IRONWOOD	24" BOX	MULTI-TRUNK	2
	PROSOPIS VELUTINA	VELVET MESQUITE	24" BOX	MULTI-TRUNK	11
SHRUBS					
	AMBROSIA DELTOIDEA	TRIANGLELEAF BURSAE	1 GAL		26
	ENCELIA FARINOSA	BRITTLEBUSH	1 GAL		31
	ERICAMERIA LARICIFOLIA	TURPENTINE BUSH	5 GAL		17
	LARREA TRIDENTATA	CREOSOTE BUSH	5 GAL		11
	LEUCOPHYLLUM FRUTESCENS 'GREEN CLOUD'	GREEN CLOUD TEXAS RANGER	5 GAL		1
	SIMMONDSIA CHINENSIS	JOJOBA	5 GAL		5
	SPHAERALCEA AMBIGUA	GLOBEMALLOW	5 GAL		25
ACCENTS					
	FEROCACTUS CYLINDRACEUS	COMPASS BARREL	5 GAL		1
	FOUQUIERIA SPLENDENS	OCOTILLO	15 GAL		6
	HESPERALOE PARVIFLORA 'BRAKELIGHTS'™	BRAKELIGHTS RED HESPERALOE	3 GAL		30
	OPUNTIA ENGELMANNII	ENGELMANN'S PRICKLY PEAR	5 GAL		1
GROUNDCOVERS					
	GLANDULARIA GOODINGII	GOODING'S VERBENA	1 GAL		1
INERT MATERIALS					
	DG	DECOMPOSED GRANITE	32,275 SF.		
	BOULDER	SURFACE SELECT BOULDER PER DETAIL X L3300	18 EA.		





Building Elevations



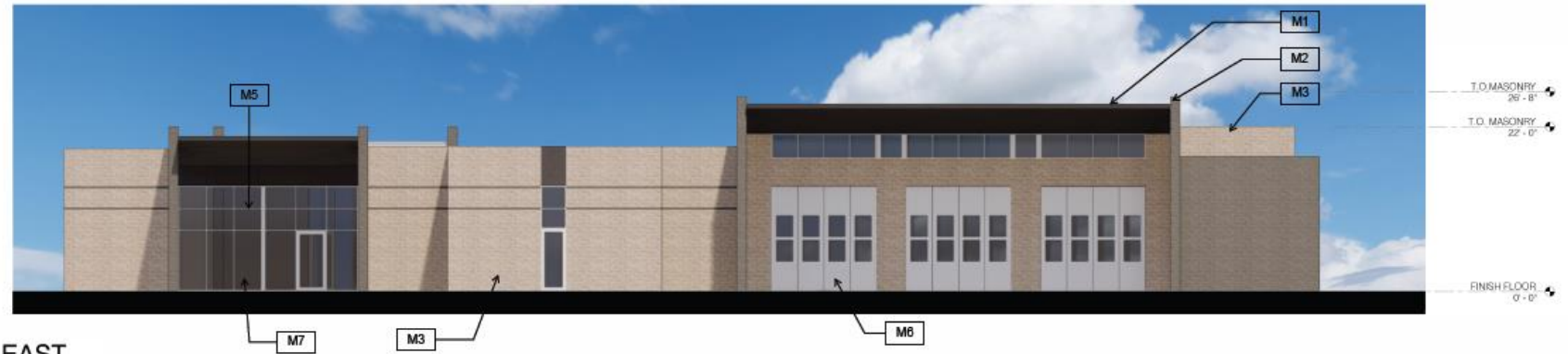
3 EXTERIOR ELEVATION - WEST
1" = 10'-0"



4 EXTERIOR ELEVATION - NORTH
1" = 10'-0"



Building Elevations



1 EXTERIOR ELEVATION - EAST
1" = 10'-0"



2 EXTERIOR ELEVATION - SOUTH
1" = 10'-0"



Site Rendering





Site Rendering





Site Rendering





Site Rendering





Colors and Materials

Material Legend

1	M1	METAL ROOFING MANF: ATAS COLOR: 02 BLACK
2	M2	CONCRETE MASONRY UNIT - TRENDSTONE MANF: SUPERLITE COLOR: OPAL
3	M3	CONCRETE MASONRY UNIT - MESASTONE MANF: SUPERLITE COLOR: PEBBLE BEACH
4	M4	METAL CLADDING MANF: ATAS COLOR: 62 CHARCOAL GREY
5	M5	DOOR/WINDOW FRAME MANF: ARCADIA COLOR: CLEAR
6	M6	APPARATUS BAY DOORS MANF: TIGER DRYLAP POWDER COATINGS COLOR: SILVER TO MATCH ALUMINUM
7	M7	GLAZING MANF: PPG COLOR: SOLARBAN 70 SOLARGRAY

M1 M2 M3 M4

M5 M6 M7

FS
224



Alternative Compliance

- ✓ Materials. Facades shall incorporate at least 3 different materials
- ✓ Materials. No more than 50% of the façade may be covered with one single material



Findings

Staff is seeking your review and recommendation on the following:

- ✓ Proposed building elevations and landscape design
- ✓ Alternative Compliance for building materials

Staff welcomes any feedback



Design Review Board