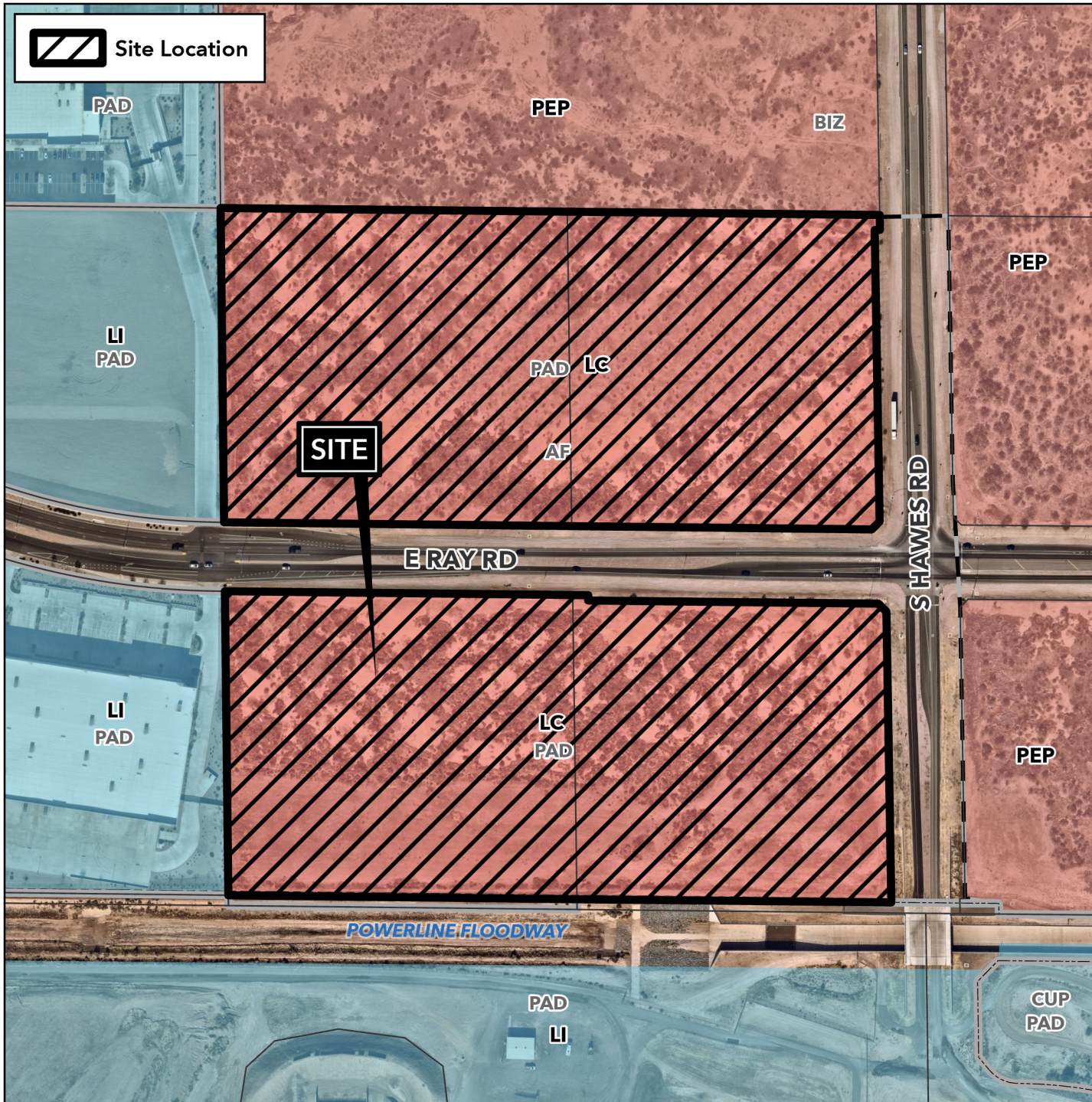


Planning and Zoning Vicinity Map: ZON22-00890

Case Details

 Site Location



Case:

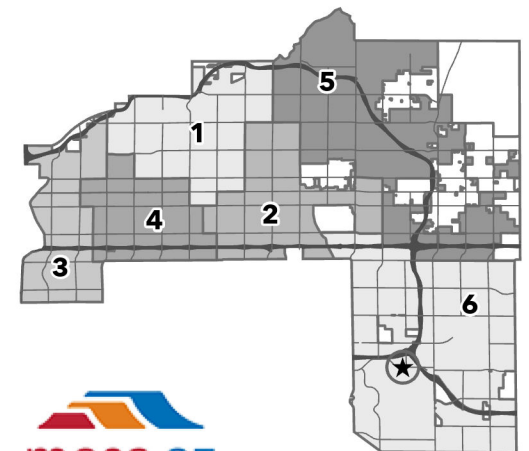
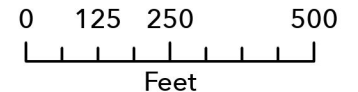
ZON22-00890

Site / Address:

(District 6). 33.3± acres located at the northwest and southwest corners of East Ray Road and South Hawes Road.

Request:

Rezone 15.6± acres from Limited Commercial with a Planned Area Development Overlay (LC-PAD) to Limited Commercial (LC), Rezone 17.7± acres from LC-PAD to Light Industrial with a Planned Area Development overlay (LI-PAD) and Site Plan Review for an approximately 235,600± square foot industrial development and future commercial development.




mesa·az