



revisions

- ▲
- ▲
- ▲
- ▲

issued for
design dev. ●
permit set ○
bid package ○
construction ○

date issued 08.23.2021

scale 1/4" = 1'-0"

drawn by jd, la

checked by ba

project number 217-002-19

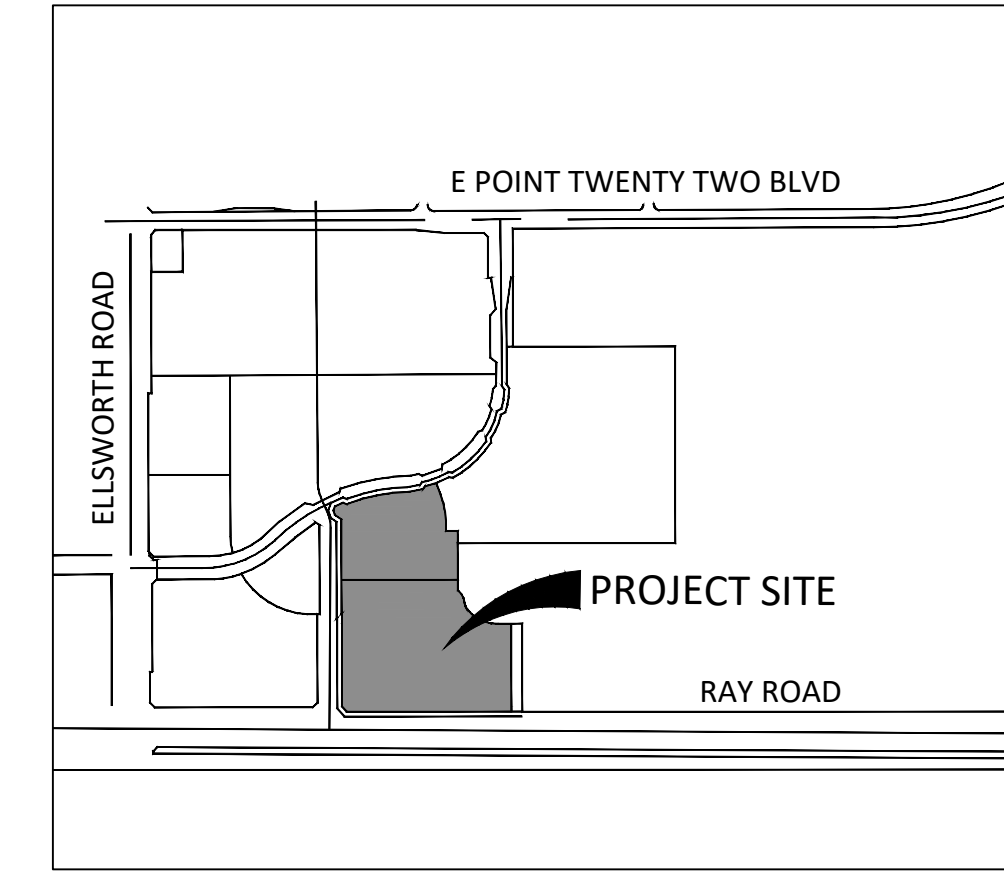
sheet number

PLANT MATERIALS LEGEND

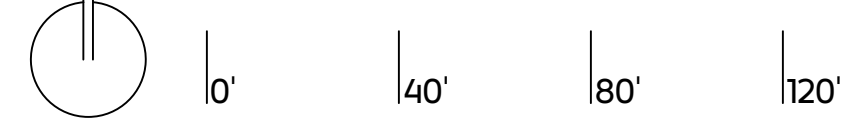
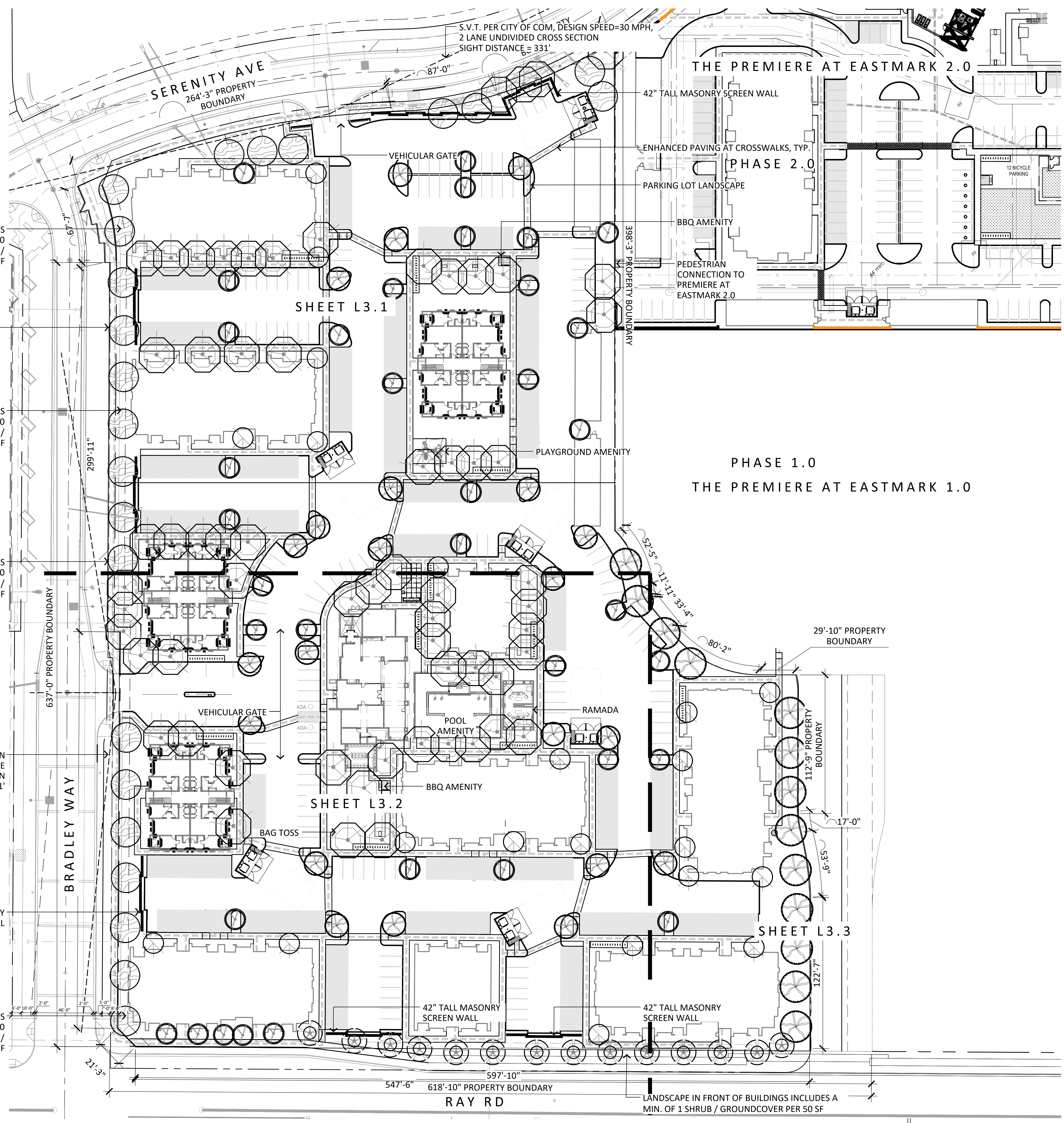
Trees	Size	Quantity
Acacia aneura	-	36
Mulga Acacia	-	-
Chitalpa tashkinensis	-	21
Chitalpa	-	-
Parkinsonia hyb.	24" box	35
'Desert Museum' Palo Verde	24" box	24
Pistacia atlantica x intergerrima	24" box	-
Red Push Pistache	-	-
Prosopis hybrid	15 gal.	14
Thornless Mesquite	-	-
Quercus virginiana	24" box	63
'Cathedral' Oak	-	-

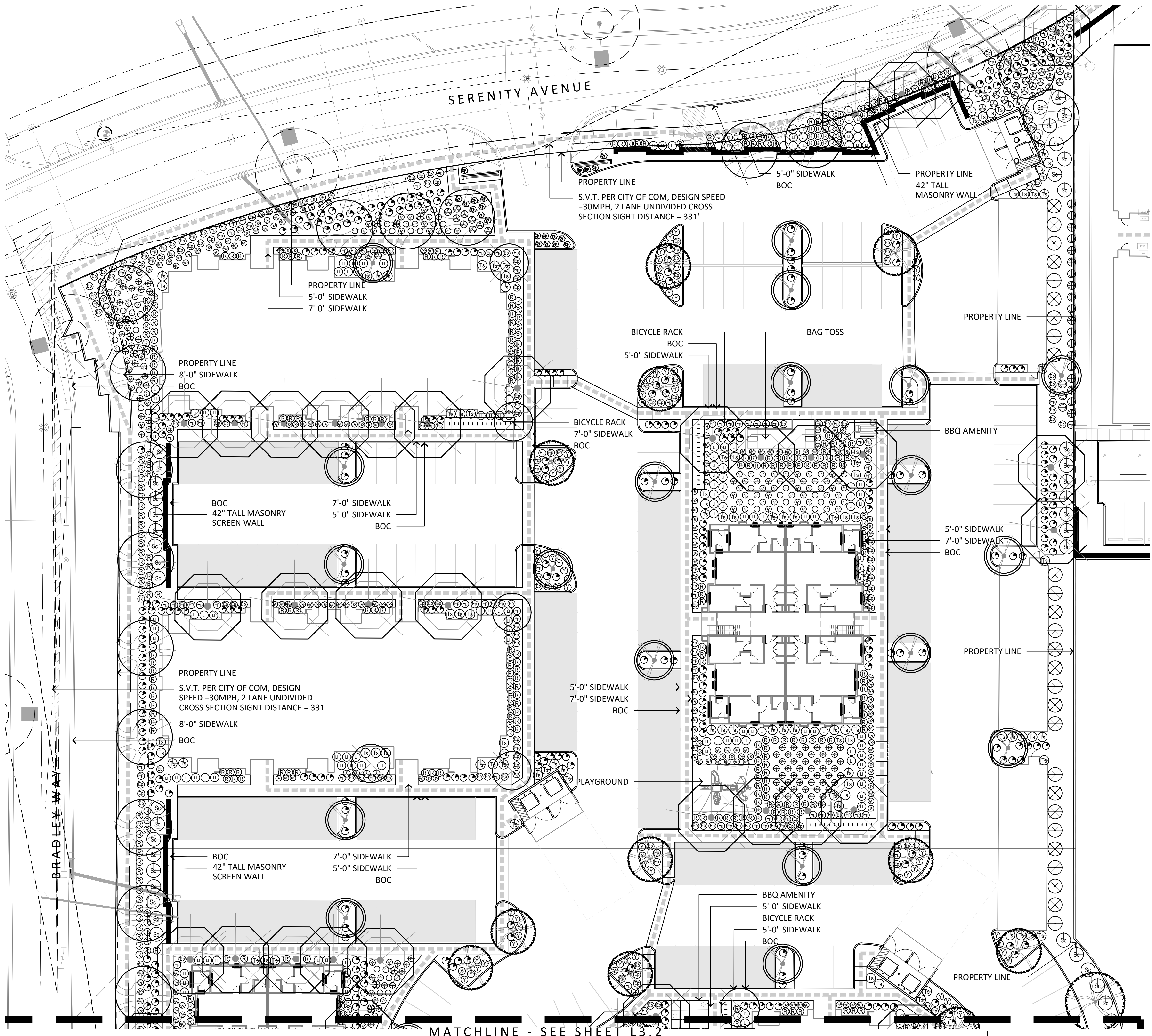
Extra Large Shrubs	Size	Quantity	Groundcovers	Size	Quantity
Tecoma stans	-	-	Eremophila prostrata 'Outback Sunrise'	1 gal	745
Yellow Tecoma Stans	5 gal.	237	Outback Sunrise Eremophila	1 gal	745
Vauquelinia californica	-	-	Lantana sp.	-	-
Arizona Rosewood	5 gal.	43	'New Gold' Lantana	1 gal.	136
Large Shrubs	Size	Quantity	Setcreasea pallida	-	-
Leucophyllum langmaniae 'Lynn's Legacy'	-	-	Purple Heart	1 gal.	2
Lynn's Legacy Sage	5 gal.	422	Cacti/ Accents	Size	Quantity
Simmondsia Chinensis	-	-	Agave vilmoriniana	-	-
Jojoba	5 gal.	84	Octopus Agave	15 gal.	1
Medium Shrubs	Size	Quantity	Bouteloua gracilis	-	-
Callistemon citrinus 'Little John'	-	-	Blond Ambition	1 gal	539
Little John	5 gal.	638	Echinocereus grusonii	-	-
Ruellia brittoniana	1 gal.	811	Golden Barrel	5 gal.	82
Ruellia	Size	Quantity	Fouquieria splendens	-	-
Small Shrubs	-	-	Ocotillo	8 cane min.	14
Russelia equisetiformis	-	-	Hesperaloe funifera	-	-
Coral Fountain	1 gal.	43	Giant Hesperaloe	5 gal	67
Inerts	Quantity		Hesperaloe parviflora	-	-
Decomposed Granite 3" Minus	-	-	'Brakelights' Red Yucca	3 gal.	452
Express Carmel - See Detail 1, Sheet L7.179,298	-	-	Hesperaloe sp. Pink Parade	3 gal.	115
Turf- Mid-Iron Sod	-	-	Pink Parade Hesperaloe	3 gal.	115
See Detail 3, Sheet L7.2	-	-	Opuntia santa rita	5 gal	10
Concrete Header Standard Color and Finish	-	-	Purple Prickly Pear	-	-
See Detail 2, Sheet L7.2	-	-	Stenocereus thurberi	3 Arm, 4' Min.	35
Artificial Turf	-	-	Organ Pipe Cactus	-	-
Wood Fiber	-	-			
See Detail 2, Sheet L6.9	544 SF				

- LANDSCAPE NOTES:**
- ALL QUANTITIES SHOWN ARE FOR THE LANDSCAPE ARCHITECT'S ESTIMATING AND SUBMITTAL PURPOSES ONLY AND THEREFORE ARE NOT GUARANTEED. THE CONTRACTOR SHALL CALCULATE QUANTITIES BASED ON THIS DRAWING SET AND SHALL CONTACT THE LANDSCAPE ARCHITECT WITH ANY DISCREPANCIES.
 - ALL TREE HEIGHTS AND CALIPERS SHALL COMPLY WITH THE LATEST AMENDED EDITION OF THE "ARIZONA NURSERY ASSOCIATION - RECOMMENDED TREE SPECIFICATIONS" FOR THAT TYPE AND SIZE OF TREE. SEE SECTION 1903(S)(A), ZONING CODE.
 - LOCATION OF ALL TREES IN SVT TO BE SURVEYED AND STAKED BY CONTRACTOR. ONCE STAKED, THE LOCATIONS ARE TO BE APPROVED BY CITY TRANSPORTATION DEPARTMENT PRIOR TO INSTALLATION. ALL TREES LOCATED IN THE SVT ARE OF SPECIES THAT WHEN FULLY MATURE WILL HAVE A TRUNK DIAMETER OF LESS THAN 12" BY TIME OF SCHEDULED COMPLETION. ALL TREES IN SVT TO BE PRUNED TO 8'-0" AS MEASURED FROM TOP OF CURB OR SIDEWALK. TREES WITH CANOPY OVER PAVEMENT SHALL BE PRUNED TO 14'-0" AS MEASURED FROM THE HIGHEST POINT OF ADJACENT PAVEMENT. ALL TREES LOCATED WITHIN SVT TO BE 36" BOX AND STANDARD TRUNKS.
 - ALL TREES AND SHRUBS LOCATED IN THE LINE-OF-SIGHT/SIGHT VISIBILITY TRIANGLES WILL BE MAINTAINED FOR A CLEAR AREA BETWEEN 3' AND 7'.
 - ALL BACKFLOW PREVENTERS 2" OR LARGER SHALL BE SCREENED WITH LANDSCAPE MATERIALS LOCATED WITHIN A 6' RADIUS OF THE BACKFLOW PREVENTER. ALL BACKFLOW PREVENTER SHALL BE PLACED IN A WIRE MESH BASKET AND PAINTED GREEN (CITY OF MESA HAS REQUESTED THE CHANGE TO GREEN TO DISCOURAGE THEFT.)
 - ALL LANDSCAPE MATERIAL INSTALLED SHALL BE MAINTAINED BY OWNER/OR LESSEE IN ACCORDANCE WITH THE APPROVED LANDSCAPE PLAN.
 - ALL TRACTS SHALL BE OWNED AND MAINTAINED BY THE HOMEOWNER'S ASSOCIATION.
 - NO TREES ARE TO BE PLANTED WITHIN 6'-0" OF ANY WATER METER BOX PER CITY OF MESA DETAILS M-49.01, M-103.2, AND M-103.3.



Vicinity Map Not To Scale





PLANT MATERIALS LEGEND

Trees	Size	Quantity
Acacia aneura	-	36
Mulga Acacia	-	-
Chitalpa tashkinensis	-	21
Chitalpa	-	-
Parkinsonia hyb.	24" box	35
'Desert Museum' Palo Verde	-	-
Pistacia atlantica x intergerrima	24" box	24
Red Push Pistache	-	-
Prosopis hybrid	15 gal.	14
Thornless Mesquite	-	-
Quercus virginiana	24" box	63
'Cathedral' Oak	-	-

Extra Large Shrubs	Size	Quantity	Groundcovers	Size	Quantity
Tecoma stans	-	-	Eremophila prostrata 'Outback Sunrise'	-	-
Yellow Tecoma Stans	5 gal.	237	Outback Sunrise Eremophila	1 gal.	745
Vauquelinia californica	-	-	Lantana sp.	-	-
Arizona Rosewood	5 gal.	43	'New Gold' Lantana	1 gal.	136
Large Shrubs	Size	Quantity	Setcreasea pallida	-	-
Leucophyllum langmaniae 'Lynn's Legacy'	-	-	Purple Heart	1 gal.	2
Lynn's Legacy Sage	5 gal.	422	Cacti / Accents	Size	Quantity
Simmondsia Chinensis	5 gal.	84	Agave vilmoriniana	-	-
Jojoba	5 gal.	84	Octopus Agave	15 gal.	1
Medium Shrubs	Size	Quantity	Bouteloua gracilis	-	-
Callistemon citrinus 'Little John'	-	-	Blond Ambition	1 gal.	539
Little John	5 gal.	638	Echinocereus grusonii	-	-
Ruellia brittoniana	1 gal.	811	Golden Barrel	5 gal.	82
Ruellia	-	-	Fouquieria splendens	-	-
Small Shrubs	Size	Quantity	Ocotillo	8 cane min.	14
Russelia equisetiformis	-	-	Hesperaloe funifera	-	-
Coral Fountain	1 gal.	43	Giant Hesperaloe	5 gal.	67
Inerts	Quantity	Hesperaloe parviflora	-	-	-
Decomposed Granite 3" Minus	-	-	'Brakelights' Red Yucca	3 gal.	452
Express Carmel - See Detail 1, Sheet L7.179,298	-	-	Hesperaloe sp. Pink Parade	3 gal.	115
Turf- Mid-Iron Sod	-	-	Pink Parade Hesperaloe	3 gal.	115
See Detail 3, Sheet L7.2	-	-	Opuntia santa rita	-	-
Concrete Header Standard Color and Finish	-	-	Purple Prickly Pear	5 gal.	10
See Detail 2, Sheet L7.2	-	-	Stenocereus thurberi	-	-
Artificial Turf	-	-	Organ Pipe Cactus	3 Arm, 4' Min.	35
Wood Fiber	-	-			
See Detail 2, Sheet L6.9	544 SF				

- LANDSCAPE NOTES:**
- ALL QUANTITIES SHOWN ARE FOR THE LANDSCAPE ARCHITECT'S ESTIMATING AND SUBMITTAL PURPOSES ONLY AND THEREFORE ARE NOT GUARANTEED. THE CONTRACTOR SHALL CALCULATE QUANTITIES BASED ON THIS DRAWING SET AND SHALL CONTACT THE LANDSCAPE ARCHITECT WITH ANY DISCREPANCIES.
 - ALL TREE HEIGHTS AND CALIPERS SHALL COMPLY WITH THE LATEST AMENDED EDITION OF THE "ARIZONA NURSERY ASSOCIATION - RECOMMENDED TREE SPECIFICATIONS" FOR THAT TYPE AND SIZE OF TREE. SEE SECTION 1903(S)(6), ZONING CODE.
 - LOCATION OF ALL TREES IN SVT TO BE SURVEYED AND STAKED BY CONTRACTOR. ONCE STAKED, THE LOCATIONS ARE TO BE APPROVED BY CITY TRANSPORTATION DEPARTMENT PRIOR TO INSTALLATION. ALL TREES LOCATED IN THE SVT ARE OF SPECIES THAT WHEN FULLY MATURE WILL HAVE A TRUNK DIAMETER OF LESS THAN 12". BY TIME OF SCHEDULED COMPLETION, ALL TREES IN SVT TO BE PRUNED TO 8'-0" AS MEASURED FROM TOP OF CURB OR SIDEWALK. TREES WITH CANOPY OVER PAVEMENT SHALL BE PRUNED TO 14'-0" AS MEASURED FROM THE HIGHEST POINT OF ADJACENT PAVEMENT. ALL TREES LOCATED WITHIN SVT TO BE 36" BOX AND STANDARD TRUNKS.
 - ALL TREES AND SHRUBS LOCATED IN THE LINE-OF-SIGHT/SIGHT VISIBILITY TRIANGLES WILL BE MAINTAINED FOR A CLEAR AREA BETWEEN 3' AND 7'.
 - ALL BACKFLOW PREVENTERS 2" OR LARGER SHALL BE SCREENED WITH LANDSCAPE MATERIALS LOCATED WITHIN A 6' RADIUS OF THE BACKFLOW PREVENTER. ALL BACKFLOW PREVENTER THAN 2" SHALL BE PLACED IN A WIRE MESH BASKET AND PAINTED GREEN (CITY OF MESA HAS REQUESTED THE CHANGE TO GREEN TO DISCOURAGE THEFT.)
 - ALL LANDSCAPE MATERIAL INSTALLED SHALL BE MAINTAINED BY OWNER/OR LESSEE IN ACCORDANCE WITH THE APPROVED LANDSCAPE PLAN.
 - ALL TRACTS SHALL BE OWNED AND MAINTAINED BY THE HOMEOWNER'S ASSOCIATION.
 - NO TREES ARE TO BE PLANTED WITHIN 6'-0" OF ANY WATER METER BOX PER CITY OF MESA DETAILS M-49.01, M-103.2, AND M-103.3.

PARKING LOT LANDSCAPE
 UNCOVERED PARKING SF = 26,131 SF
 1 TREE PER 2,300 SF REQUIRED = 26,131 / 2,300 = 12 TREES REQUIRED
 22 TREES PROVIDED

anderson
 815 N 1st Ave
 Phoenix, AZ 85003
 602 682 6070

Client:
PCS Development LLC

8802 E. Diamond Rim Dr.
 Scottsdale, AZ 85255

The Premiere at Eastmark 3.0
Multi-Family
 Mesa, Arizona
Planting Plan



revisions

△	
△	
△	

issued for

design dev.	●
permit set	○
bid package	○
construction	○

date issued 08.23.2021

scale 1/20

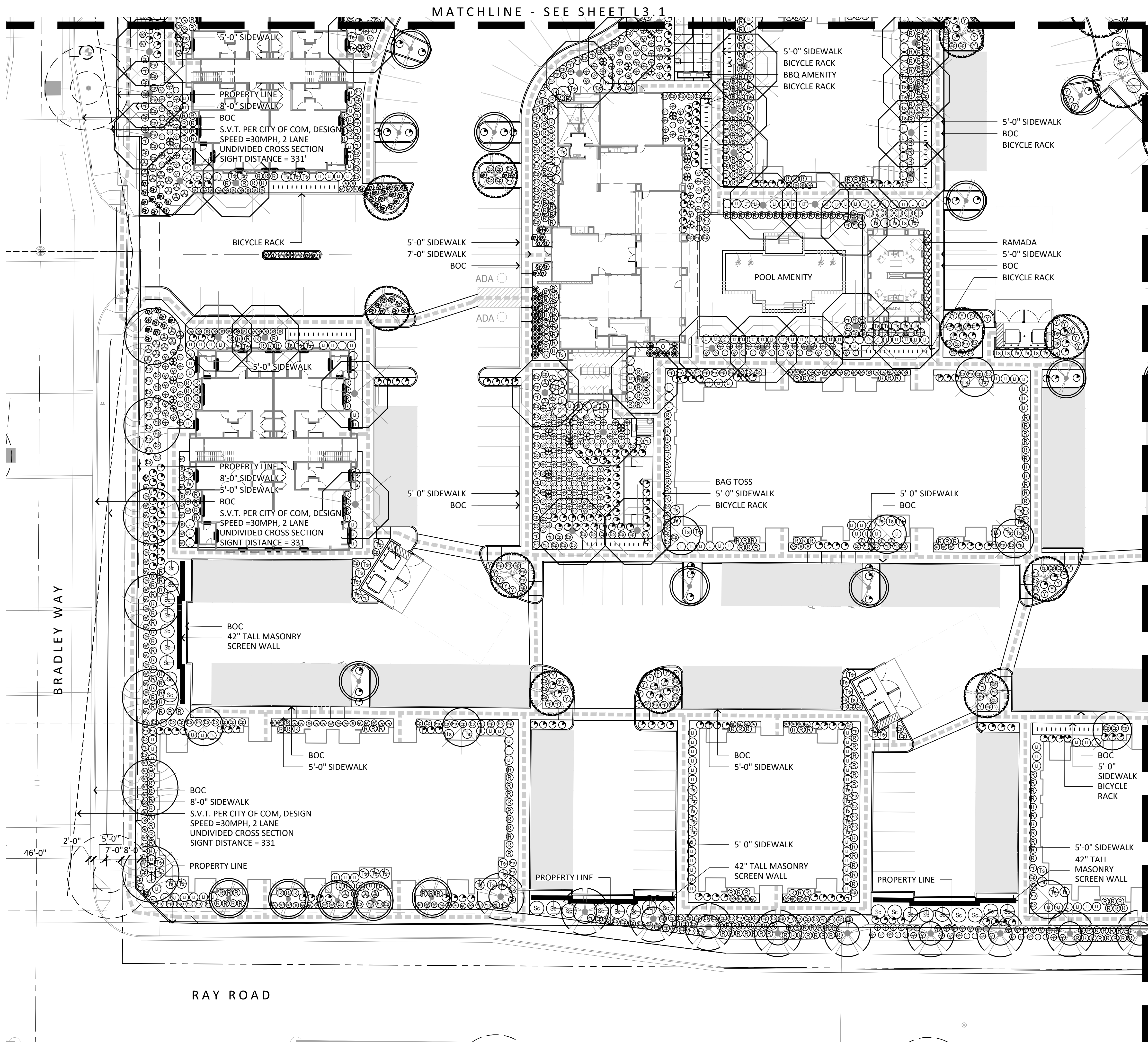
drawn by jd, la

checked by ba

project number 217-002-19

sheet number

L3.1



PLANT MATERIALS LEGEND

Trees	Size	Quantity	Groundcovers	Size	Quantity
Acacia aneura	-	36	Eremophila prostrata 'Outback Sunrise'	1 gal	745
Mulga Acacia	-	21	Outback Sunrise Eremophila	1 gal	745
Chitalpa tashkinensis	-	21	Lantana sp.	1 gal	136
Chitalpa	24" box	35	'New Gold' Lantana	1 gal	136
Parkinsonia hyb.	24" box	24	Setcreasea pallida	1 gal	2
'Desert Museum' Palo Verde	24" box	24	Purple Heart	1 gal	2
Pistacia atlantica x intergerrima	24" box	24	Cacti / Accents	Size	Quantity
Red Push Pistache	15 gal.	14	Agave vilmoriniana	15 gal.	1
Prosopis hybrid	24" box	63	Bouteloua gracilis	1 gal	539
Thornless Mesquite	24" box	63	Blond Ambition	1 gal	539
Quercus virginiana	24" box	63	Echinocereus grusonii	5 gal.	82
'Cathedral' Oak	24" box	63	Golden Barrel	5 gal.	82
			Fouquieria splendens	5 gal.	82
			Ocotillo	8 cane min.	14
			Hesperaloe funifera	5 gal	67
			Giant Hesperaloe	5 gal	67
			Hesperaloe parviflora	3 gal.	452
			'Brakelights' Red Yucca	3 gal.	115
			Hesperaloe sp. Pink Parade	3 gal.	115
			Pink Parade Hesperaloe	3 gal.	115
			Opuntia santa rita	5 gal	10
			Purple Prickly Pear	5 gal	10
			Stenocereus thurberi	3 Arm, 4" Min.	35
			Organ Pipe Cactus	3 Arm, 4" Min.	35

Extra Large Shrubs	Size	Quantity	Medium Shrubs	Size	Quantity
Tecoma stans	5 gal.	237	Callistemon citrinus 'Little John'	5 gal.	638
Yellow Tecoma Stans	5 gal.	237	Little John	5 gal.	638
Vauquelinia californica	5 gal.	43	Ruellia brittoniana	1 gal.	811
Arizona Rosewood	5 gal.	43	Ruellia	1 gal.	811
Large Shrubs	Size	Quantity	Small Shrubs	Size	Quantity
Leucophyllum langmaniae 'Lynn's Legacy'	5 gal.	422	Russelia equisetiformis	1 gal.	43
Lynn's Legacy Sage	5 gal.	422	Coral Fountain	1 gal.	43
Simmondsia Chinensis	5 gal.	84	Inerts	Quantity	
Jojoba	5 gal.	84	Decomposed Granite 3" Minus	544 SF	
Medium Shrubs	Size	Quantity	Express Carmel - See Detail 1, Sheet L7.179,298		
Callistemon citrinus 'Little John'	5 gal.	638	Turf- Mid-Iron Sod	See Detail 3, Sheet L7.2	
Little John	5 gal.	638	Concrete Header Standard Color and Finish	See Detail 2, Sheet L7.2	
Ruellia brittoniana	1 gal.	811	Artificial Turf	See Detail 2, Sheet L6.9	
Ruellia	1 gal.	811	Wood Fiber	See Detail 2, Sheet L6.9	

- #### LANDSCAPE NOTES:
- ALL QUANTITIES SHOWN ARE FOR THE LANDSCAPE ARCHITECT'S ESTIMATING AND SUBMITTAL PURPOSES ONLY AND THEREFORE ARE NOT GUARANTEED. THE CONTRACTOR SHALL CALCULATE QUANTITIES BASED ON THIS DRAWING SET AND SHALL CONTACT THE LANDSCAPE ARCHITECT WITH ANY DISCREPANCIES.
 - ALL TREE HEIGHTS AND CALIPERS SHALL COMPLY WITH THE LATEST AMENDED EDITION OF THE "ARIZONA NURSERY ASSOCIATION - RECOMMENDED TREE SPECIFICATIONS" FOR THAT TYPE AND SIZE OF TREE. SEE SECTION 1903(S)(A), ZONING CODE.
 - LOCATION OF ALL TREES IN SVT TO BE SURVEYED AND STAKED BY CONTRACTOR. ONCE STAKED, THE LOCATIONS ARE TO BE APPROVED BY CITY TRANSPORTATION DEPARTMENT PRIOR TO INSTALLATION. ALL TREES LOCATED IN THE SVT ARE OF SPECIES THAT WHEN FULLY MATURE WILL HAVE A TRUNK DIAMETER OF LESS THAN 12". BY TIME OF SCHEDULED COMPLETION, ALL TREES IN SVT TO BE PRUNED TO 8'-0" AS MEASURED FROM TOP OF CURB OR SIDEWALK. TREES WITH CANOPY OVER PAVEMENT SHALL BE PRUNED TO 14'-0" AS MEASURED FROM THE HIGHEST POINT OF ADJACENT PAVEMENT. ALL TREES LOCATED WITHIN SVT TO BE 36" BOX AND STANDARD TRUNKS.
 - ALL TREES AND SHRUBS LOCATED IN THE LINE-OF-SIGHT/SIGHT VISIBILITY TRIANGLES WILL BE MAINTAINED FOR A CLEAR AREA BETWEEN 3' AND 7'.
 - ALL BACKFLOW PREVENTERS 2" OR LARGER SHALL BE SCREENED WITH LANDSCAPE MATERIALS LOCATED WITHIN A 6' RADIUS OF THE BACKFLOW PREVENTER. ALL BACKFLOW PREVENTER 2" SHALL BE PLACED IN A WIRE MESH BASKET AND PAINTED GREEN (CITY OF MESA HAS REQUESTED THE CHANGE TO GREEN TO DISCOURAGE THEFT.)
 - ALL LANDSCAPE MATERIAL INSTALLED SHALL BE MAINTAINED BY OWNER/OR LESSEE IN ACCORDANCE WITH THE APPROVED LANDSCAPE PLAN.
 - ALL TRACTS SHALL BE OWNED AND MAINTAINED BY THE HOMEOWNER'S ASSOCIATION.
 - NO TREES ARE TO BE PLANTED WITHIN 6'-0" OF ANY WATER METER BOX PER CITY OF MESA DETAILS M-49.01, M-103.2, AND M-103.3.

PARKING LOT LANDSCAPE
 UNCOVERED PARKING SF = 26,131 SF
 1 TREE PER 2,300 SF REQUIRED = 26,131 / 2,300 = 12 TREES REQUIRED
 22 TREES PROVIDED

anderson
 815 N 1st Ave
 Phoenix, AZ 85003
 602 682 6070

Client:
PCS Development LLC

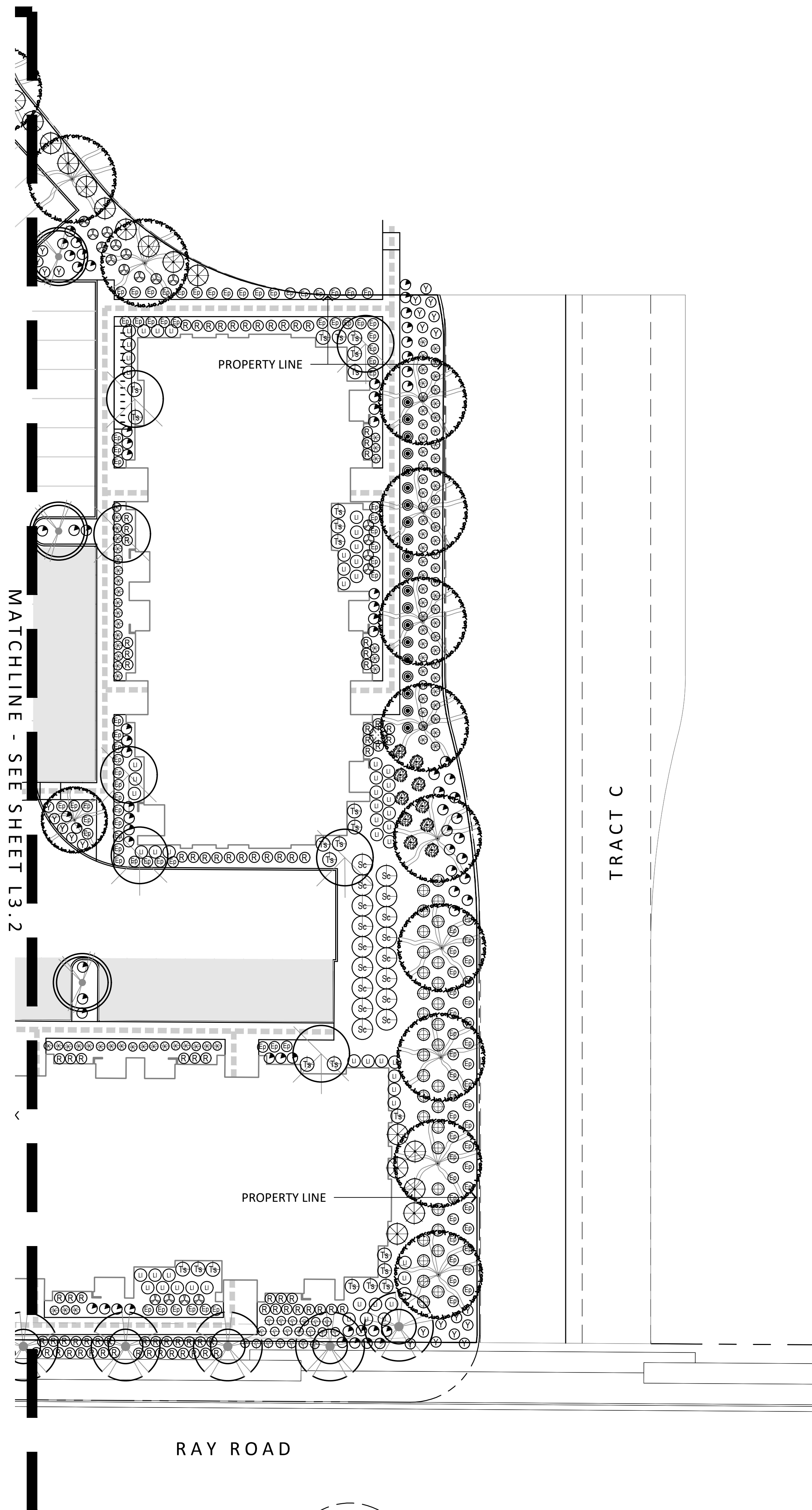
8802 E. Diamond Rim Dr.
 Scottsdale, AZ 85255

The Premiere at Eastmark 3.0
Multi-Family
 Mesa, Arizona
Planting Plan



revisions	issued for
△	design dev.
△	permit set
△	bid package
△	construction

date issued	08.23.2021
scale	1/20
drawn by	jd, la
checked by	ba
project number	217-002-19
sheet number	



PLANT MATERIALS LEGEND

Trees	Size	Quantity
Acacia aneura	-	36
Mulga Acacia	-	-
Chitalpa tashkinensis	-	21
Chitalpa	-	-
Parkinsonia hyb.	24" box	35
'Desert Museum' Palo Verde	-	-
Pistacia atlantica x intergerrima	24" box	24
Red Push Pistache	-	-
Prosopis hybrid	15 gal.	14
Thornless Mesquite	-	-
Quercus virginiana	24" box	63
'Cathedral' Oak	-	-

Extra Large Shrubs	Size	Quantity	Groundcovers	Size	Quantity
Tecoma stans	-	-	Eremophila prostrata 'Outback Sunrise'	1 gal	745
Yellow Tecoma Stans	5 gal.	237	Outback Sunrise Eremophila	1 gal	745
Vauquelinia californica	-	-	Lantana sp.	-	-
Arizona Rosewood	5 gal.	43	'New Gold' Lantana	1 gal.	136
Large Shrubs	Size	Quantity	Setcreasea pallida	-	-
Leucophyllum langmaniae 'Lynn's Legacy'	-	-	Purple Heart	1 gal.	2
Lynn's Legacy Sage	5 gal.	422	Cacti/ Accents	Size	Quantity
Simmondsia Chinensis	-	-	Agave vilmoriniana	-	-
Jojoba	5 gal.	84	Octopus Agave	15 gal.	1
Medium Shrubs	Size	Quantity	Bouteloua gracilis	-	-
Callistemon citrinus 'Little John'	-	-	Blond Ambition	1 gal	539
Little John	5 gal.	638	Echinocereus grusonii	-	-
Ruellia brittoniana	1 gal.	811	Golden Barrel	5 gal.	82
Ruellia	-	-	Fouquieria splendens	-	-
Small Shrubs	Size	Quantity	Ocotillo	8 cane min.	14
Russelia equisetiformis	-	-	Hesperaloe funifera	-	-
Coral Fountain	1 gal.	43	Giant Hesperaloe	5 gal	67
Inerts	Quantity	Hesperaloe parviflora	-	-	-
Decomposed Granite 3" Minus	-	-	'Brakelights' Red Yucca	3 gal.	452
Express Carmel - See Detail 1, Sheet L7.179,298 s	-	-	Hesperaloe sp. Pink Parade	-	-
Turf- Mid-Iron Sod	-	-	Hesperaloe sp.	3 gal.	115
See Detail 3, Sheet L7.2	-	-	Pink Parade Hesperaloe	-	-
Concrete Header Standard Color and Finish	-	-	Opuntia santa rita	5 gal	10
See Detail 2, Sheet L7.2	-	-	Purple Prickly Pear	-	-
Artificial Turf	-	-	Stenocereus thurberi	-	-
Wood Fiber	-	-	Organ Pipe Cactus	3 Arm, 4' Min.	35
See Detail 2, Sheet L6.9	544 SF	-	-	-	-

- LANDSCAPE NOTES:**
- ALL QUANTITIES SHOWN ARE FOR THE LANDSCAPE ARCHITECT'S ESTIMATING AND SUBMITTAL PURPOSES ONLY AND THEREFORE ARE NOT GUARANTEED. THE CONTRACTOR SHALL CALCULATE QUANTITIES BASED ON THIS DRAWING SET AND SHALL CONTACT THE LANDSCAPE ARCHITECT WITH ANY DISCREPANCIES.
 - ALL TREE HEIGHTS AND CALIPERS SHALL COMPLY WITH THE LATEST AMENDED EDITION OF THE "ARIZONA NURSERY ASSOCIATION - RECOMMENDED TREE SPECIFICATIONS" FOR THAT TYPE AND SIZE OF TREE. SEE SECTION 1903(S)(A), ZONING CODE.
 - LOCATION OF ALL TREES IN SVT TO BE SURVEYED AND STAKED BY CONTRACTOR. ONCE STAKED, THE LOCATIONS ARE TO BE APPROVED BY CITY TRANSPORTATION DEPARTMENT PRIOR TO INSTALLATION. ALL TREES LOCATED IN THE SVT ARE OF SPECIES THAT WHEN FULLY MATURE WILL HAVE A TRUNK DIAMETER OF LESS THAN 12". BY TIME OF SCHEDULED COMPLETION, ALL TREES IN SVT TO BE PRUNED TO 8'-0" AS MEASURED FROM TOP OF CURB OR SIDEWALK. TREES WITH CANOPY OVER PAVEMENT SHALL BE PRUNED TO 14'-0" AS MEASURED FROM THE HIGHEST POINT OF ADJACENT PAVEMENT. ALL TREES LOCATED WITHIN SVT TO BE 36" BOX AND STANDARD TRUNKS.
 - ALL TREES AND SHRUBS LOCATED IN THE LINE-OF-SIGHT/SIGHT VISIBILITY TRIANGLES WILL BE MAINTAINED FOR A CLEAR AREA BETWEEN 3' AND 7'.
 - ALL BACKFLOW PREVENTERS 2" OR LARGER SHALL BE SCREENED WITH LANDSCAPE MATERIALS LOCATED WITHIN A 6' RADIUS OF THE BACKFLOW PREVENTER. ALL BACKFLOW PREVENTER THAN 2" SHALL BE PLACED IN A WIRE MESH BASKET AND PAINTED GREEN (CITY OF MESA HAS REQUESTED THE CHANGE TO GREEN TO DISCOURAGE THEFT.)
 - ALL LANDSCAPE MATERIAL INSTALLED SHALL BE MAINTAINED BY OWNER/OR LESSEE IN ACCORDANCE WITH THE APPROVED LANDSCAPE PLAN.
 - ALL TRACTS SHALL BE OWNED AND MAINTAINED BY THE HOMEOWNER'S ASSOCIATION.
 - NO TREES ARE TO BE PLANTED WITHIN 6'-0" OF ANY WATER METER BOX PER CITY OF MESA DETAILS M-49.01, M-103.2, AND M-103.3.

PARKING LOT LANDSCAPE
 UNCOVERED PARKING SF = 26,131 SF
 1 TREE PER 2,300 SF REQUIRED = 26,131 / 2,300 = 12 TREES REQUIRED
 22 TREES PROVIDED

anderson
 815 N 1st Ave
 Phoenix, AZ 85003
 602 682 6070

Client:
PCS Development LLC

8802 E. Diamond Rim Dr.
 Scottsdale, AZ 85255

The Premiere at Eastmark 3.0
Multi-Family
 Mesa, Arizona
Planting Plan



revisions	issued for	date issued
△	design dev.	08.23.2021
△	permit set	
△	bid package	
△	construction	

scale 1/20
 drawn by jd, la
 checked by ba
 project number 217-002-19
 sheet number

