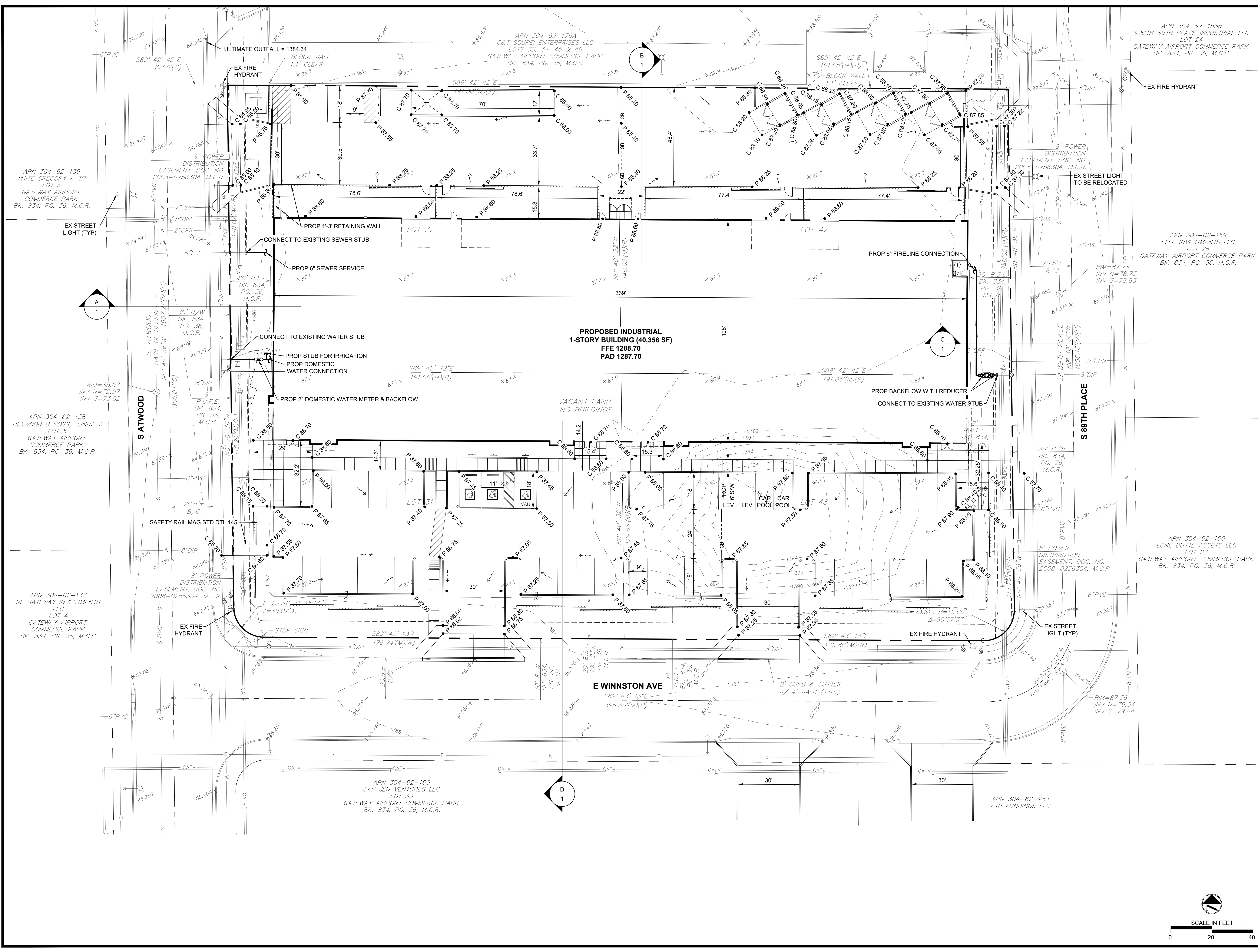
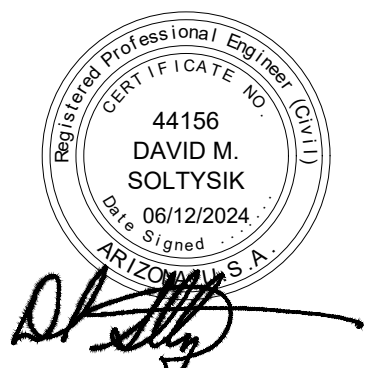


P:\161077_0169\161077_0169.dwg - PRELIM GRADING AND UTILITY PLAN
 03/13/2024 - 10:59 AM - R:\cadd\dwg\161077_0169.dwg - PRELIM GRADING AND UTILITY PLAN



645 East Missouri Ave, Suite 420, Phoenix, Arizona 85012
 P: 602.297.8735 • info@terrascope.us • terrascopeconsulting.com



CLYDE CAPITAL INDUSTRIAL

PRELIMINARY GRADING & UTILITY PLAN

CLYDE CAPITAL

Contact Arizona 811 at least two full working days before you begin excavation

 Call 811 or click Arizona811.com

DATE	DESCRIPTION
03/13/2024	1ST DR SUBMITTAL
05/17/2024	2ND DR SUBMITTAL
06/12/2024	3RD DR SUBMITTAL

CHECKED BY: SAK
 DRAWN BY: NLR
 TITLE:
PRELIM GRADING & UTILITY PLAN
 SHEET No.
2 of 2
 PROJECT No.
1677

