

**CITY OF MESA FIRE CODE NOTES:**

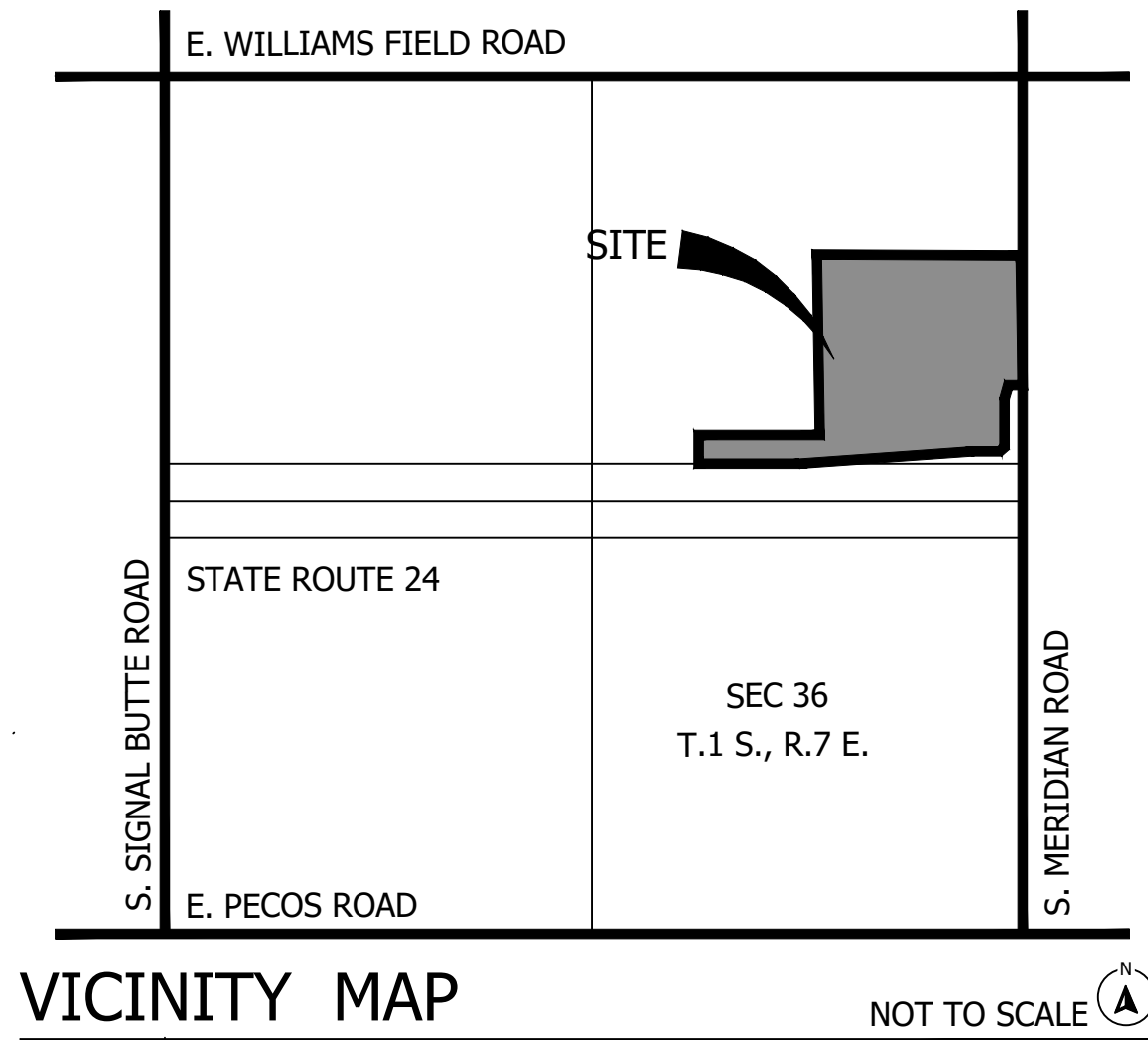
- A. COMPLY WITH ALL PROVISIONS AND REQUIREMENTS OF MESA BUILDING CODE (MBC) CHAPTER 33 - SAFEGUARDS DURING CONSTRUCTION, MESA FIRE CODE (MFC) CHAPTER 33 - FIRE SAFETY DURING CONSTRUCTION AND DEMOLITION, AND NFPA 241 FOR ITEMS NOT SPECIFICALLY ADDRESSED BY MFC CHAPTER 33. "FIRE APPARATUS ACCESS ROADS ARE ESSENTIAL DURING CONSTRUCTION TO ALLOW EMERGENCY RESPONSE TO THE SITE FOR BOTH FIRE AND MEDICAL EMERGENCIES. ACCESS ROADS SHALL BE IN PLACE PRIOR TO THE START OF VERTICAL CONSTRUCTION. IT IS IMPORTANT TO DEVELOP ACCESS ROADS AT AN EARLY STAGE OF CONSTRUCTION TO ALLOW FOR FIRE DEPARTMENT ACCESS TO THE SITE IN THE CASE OF FIRE OR INJURY."
- B. "REQUIRED FIRE APPARATUS ACCESS ROAD DURING CONSTRUCTION OR DEMOLITION SHALL COMPLY WITH MESA FIRE AND MEDICAL DEPARTMENT STANDARD DETAIL FPD 3310.1. THE ACCESS ROAD SHALL BE A MINIMUM OF 20 FEET WIDE OF ALL-WEATHER DRIVING SURFACE, GRADED TO DRAIN STANDING WATER AND ENGINEERED TO BEAR THE IMPOSED LOADS OF FIRE APPARATUS (78,000 LBS. / 24,000 LBS. FRONT AXLE, 54,000 LBS. REAR AXLE) WHEN ROADS ARE WET. THE ACCESS ROAD SHALL EXTEND TO WITHIN 200 FEET OF ANY COMBUSTIBLE MATERIALS AND/OR ANY LOCATION ON THE JOBSITE WHERE ANY PERSON(S) SHALL BE WORKING FOR A MINIMUM OF FOUR (4) CONTINUOUS HOURS IN ANY DAY. A CLEARLY VISIBLE SIGN MARKED "FIRE DEPARTMENT ACCESS", IN RED LETTERS, SHALL BE PROVIDED AT THE ENTRY TO THE ACCESS ROAD. ALL OPEN TRENCHES SHALL HAVE STEEL PLATES CAPABLE OF MAINTAINING THE INTEGRITY OF THE ACCESS ROAD DESIGN WHEN THESE TRENCHES CROSS AN ACCESS ROAD. THESE ACCESS ROADS MAY BE TEMPORARY OR PERMANENT. THIS POLICY APPLIES ONLY DURING CONSTRUCTION AND/OR DEMOLITION. PERMANENT ACCESS PER THE MFC SHALL BE IN PLACE PRIOR TO ANY FINAL INSPECTION OR CERTIFICATE OF OCCUPANCY."
- C. "WATER SUPPLY FOR FIRE PROTECTION. AN APPROVED WATER SUPPLY FOR CONSTRUCTION SITE SHALL MEET THE REQUIREMENTS OF MFC APPENDIX CHAPTERS B AND C. THE MINIMUM FIRE FLOW REQUIREMENT WHEN CONTRACTOR OR DEVELOPER BRINGS COMBUSTIBLE MATERIALS ON SITE IS 1,500 GPM AT 20 PSI. AT LEAST ONE FIRE HYDRANT SHALL BE WITHIN 500 FEET OF ANY COMBUSTIBLE MATERIAL AND CAPABLE OF DELIVERING THE MINIMUM FIRE FLOW REQUIREMENT. THIS HYDRANT OR HYDRANTS MAY BE EITHER TEMPORARY OR PERMANENT AS THE PROJECT SCHEDULE PERMITS. IN ADDITION, THERE ARE TIMES WHEN HYDRANTS AND VALVES MUST BE CLOSED TEMPORARILY FOR REPAIR WORK OR CONSTRUCTION OF THE WATER SYSTEM. THE DEVELOPER/CONTRACTOR IS RESPONSIBLE FOR ENSURING THAT THE WATER SUPPLY IS ALWAYS AVAILABLE. WHEN THE WORK IS COMPLETE, DEVELOPER/CONTRACTOR SHALL MAKE SURE THAT THE FIRE HYDRANTS ARE ACTIVE, AND THE VALVES ARE OPEN."

# FINAL SITE PLAN

FOR

## HAVEN AT DESTINATION

A PORTION OF NORTHEAST QUARTER (NE1/4) OF SECTION 36, TOWNSHIP I SOUTH, RANGE 7 EAST OF THE GILA AND SALT RIVER MERIDIAN MARICOPA COUNTY, ARIZONA



**CONSULTANT TEAM:**

LANDSCAPE ARCHITECT  
 ABLA, LLC  
 ANDY BARON  
 310 E. RIO SALADO PARKWAY  
 TEMPE, AZ 85281  
 480-530-0077  
 andy.baron@ablstudio.com

CIVIL ENGINEER  
 EPS GROUP, INC.  
 JEFFREY DITGEN  
 1130 N ALMA SCHOOL RD.  
 SUITE 120  
 480-503-225  
 jeff.ditgen@epsgruoinc.com

**CLIENT / OWNER DEVELOPER:**

ASHTON WOODS  
 MARI FLYNN  
 1533 N PIMA ROAD  
 SUITE 205  
 480-202-6541  
 mari.flynn@ashtonwoods.com

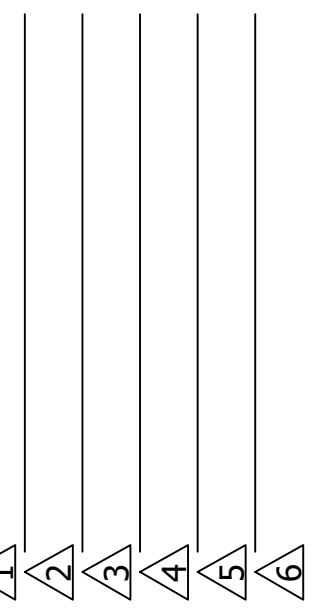
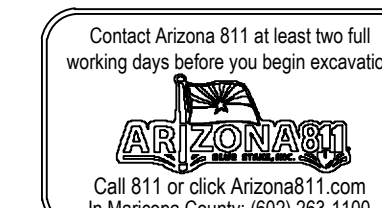
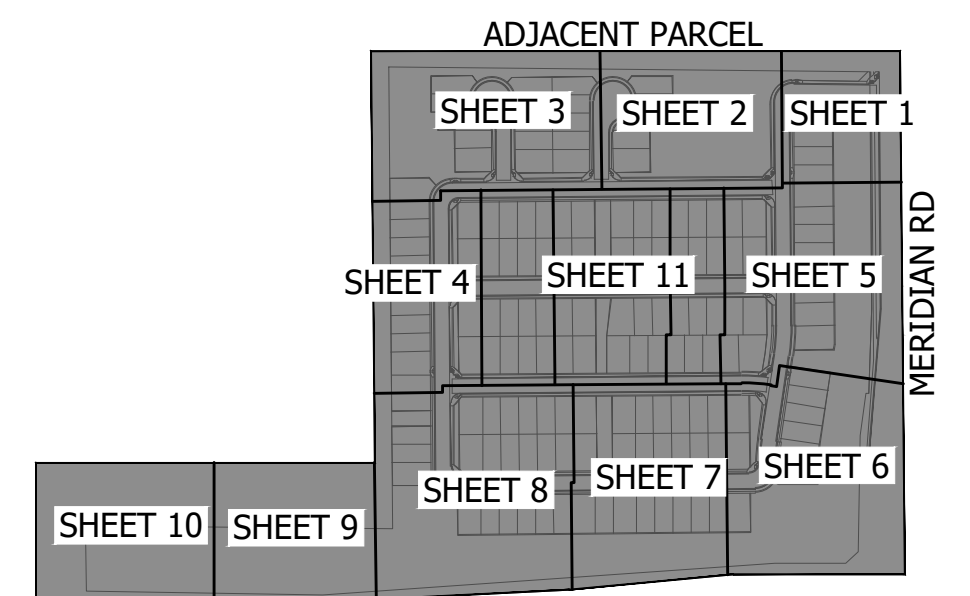
**SHEET INDEX**

PG #	SHEET LABEL	DESCRIPTION
1	LA CV	LANDSCAPE COVER
2	LA2.0	WALL PLAN
3-12	LA2.1-LA2.10	LAYOUT PLAN
13	LA3.0	OVERALL PLANTING PLAN
14-24	LA3.1-LA3.11	PLANTING PLANS
25-28	LA6.1-LA6.4	CONSTRUCTION DETAILS

**SITE LANDSCAPE DATA:**

SHOWN FOR SUBMITTAL PURPOSES ONLY. ALL QUANTITIES SHOWN ARE FOR THE LANDSCAPE ARCHITECT'S ESTIMATING PURPOSES ONLY AND THEREFORE ARE NOT GUARANTEED. THE CONTRACTOR SHALL CALCULATE QUANTITIES BASED ON THIS DRAWING SET.

DESCRIPTION:	QUANTITY:
STREET ROW LANDSCAPING	
COLLECTOR STREETS - MINIMUM REQUIRED	8 TREES AND 48 SHRUBS
COLLECTOR STREETS - PLANTS PROVIDED	14 TREES AND 303 SHRUBS
LOCAL STREETS - MINIMUM REQUIRED	61 TREES AND 244 SHRUBS
LOCAL STREETS - PLANTS PROVIDED	66 TREES AND 455 SHRUBS
OPEN SPACE	
OPEN SPACE REQUIRED	67,200 S.F. (1.54 AC)
OPEN SPACE PROVIDED	407,721 S.F. (9.36 AC)
TREE CANOPY PERCENTAGE	
TOTAL CANOPY COVERAGE	14.5 %



Final Site Plan  
 Haven at Destination  
 NE Corner of Meridian RD and AZ Route 24  
 Mesa, AZ  
 SHEET TITLE: LANDSCAPE COVER



**ABLA**  
 310 E. RIO SALADO PARKWAY  
 TEMPE, ARIZONA 85281  
 OFFICE: 480-530-0077  
 WEB: ABLASTUDIO.COM



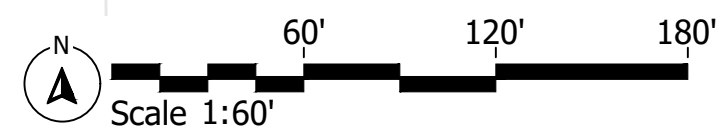
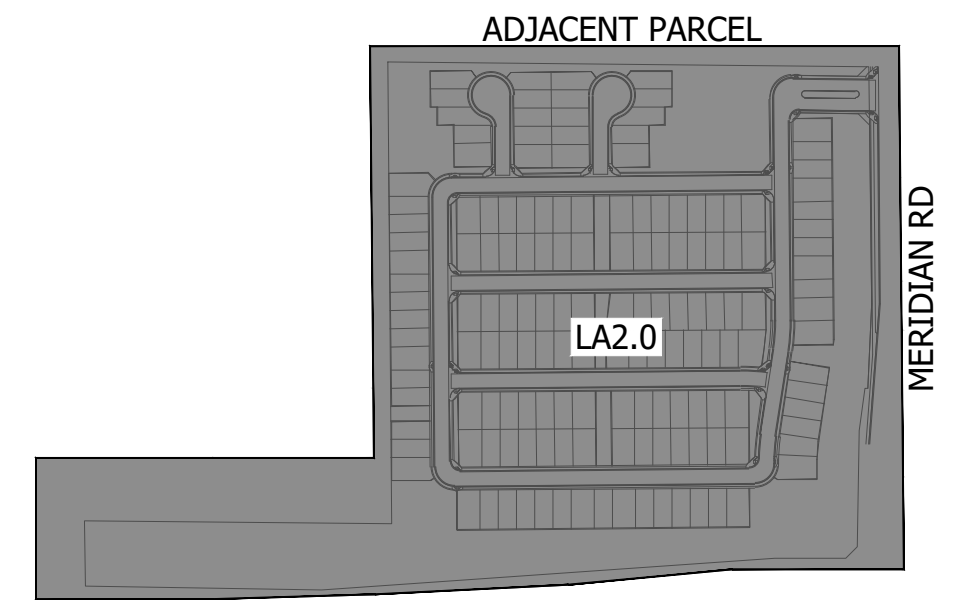
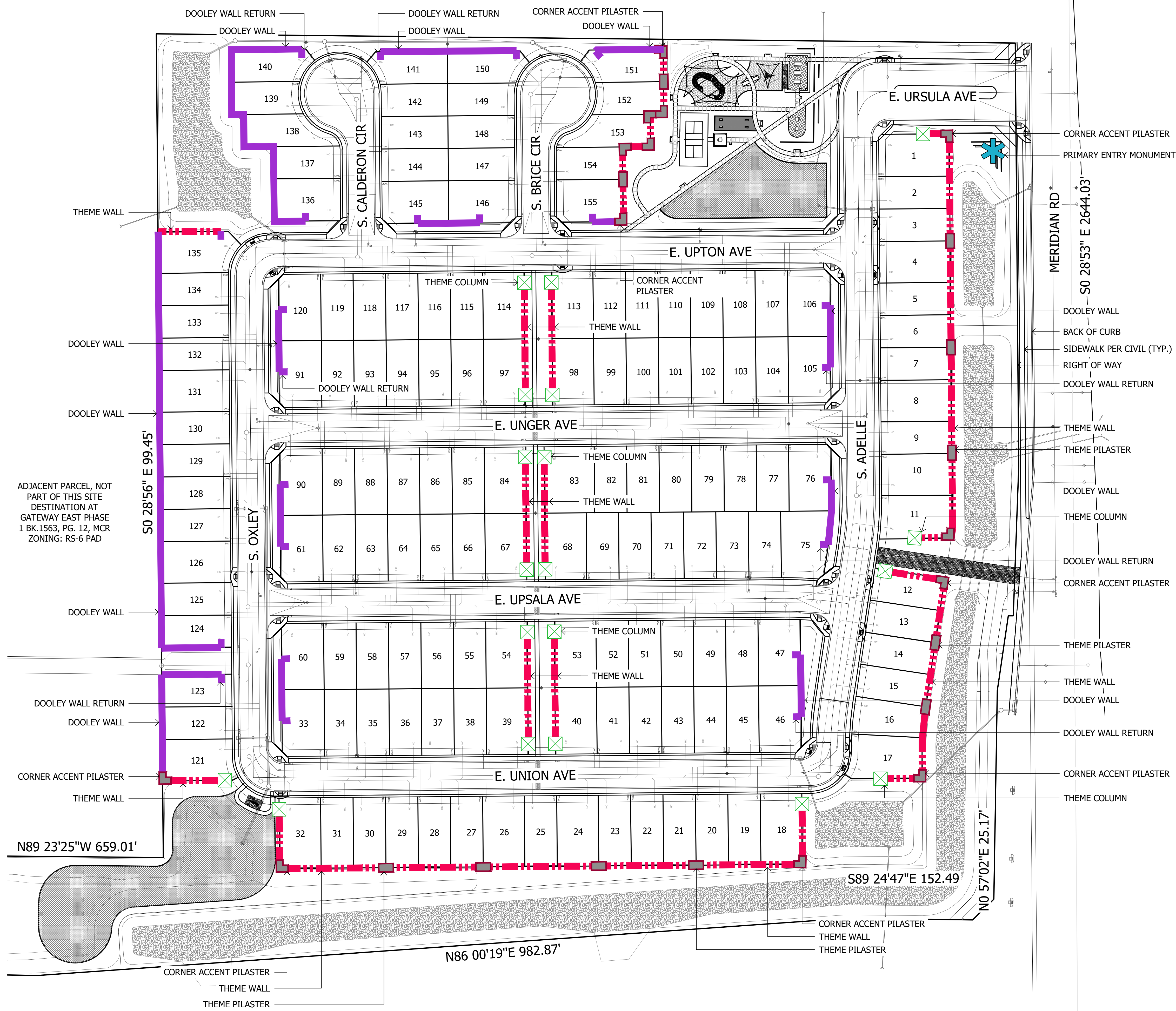
© Copyright 2025 ABLA, LLC.

DATE: 10-20-2025  
 ISSUED FOR: 4th Review  
 DRAWN BY: DCR, AS, AR  
 CHECKED BY: MP  
 PERMIT NUMBER:  
 ABLA PROJECT NUMBER:  
 86-131-25

ADJACENT PARCEL, NOT PART OF THIS SITE  
 DESTINATION AT GATEWAY EAST PHASE 2  
 BK.1618, PG.32, MCR  
 ZONING: RS-7 PAD  
 N89 23'25"W 1098.42'

SYMBOL	DESCRIPTION	DETAIL	QTY.
	THEME WALL	DETAIL 1, SHEET LA6.2	2,916 LF
	DOOLEY WALL	DETAIL 3, SHEET LA6.2	2,191 LF
	THEME COLUMN	DETAIL 2, SHEET LA6.2	19
	THEME PILASTER	DETAIL 6, SHEET LA6.2	11
	CORNER ACCENT PILASTER	DETAIL 5, SHEET LA6.2	13
	DOOLEY WALL RETURN	DETAIL 4, SHEET LA6.2	23
	PRIMARY ENTRY MONUMENT	DETAIL 2, SHEET LA6.3	1

- GENERAL WALL NOTES**
1. ALL WALLS TO TERMINATE WITH END WALL COLUMN 25'-0" FROM BACK OF CURB.
  2. QUANTITIES SHOWN ARE FOR BIDDING AND PERMITTING PURPOSES ONLY, CONTRACTOR TO VERIFY.
  3. CONTRACTOR TO VERIFY SIDEYARD RETURN LOCATIONS WITH HOME BUILDER PRIOR TO CONSTRUCTION. (SIDEYARD RETURNS BUILT BY HOME BUILDER)
  4. CONTRACTOR TO INSTALL A 6"x6" CONCRETE HEADER FROM END OF WALL CENTERED ON PROPERTY LINE TO BACK OF CURB OR SIDEWALK.
  5. QUANTITIES SHOWN FOR TOTAL LENGTHS OF ALL WALL PLAN SHEETS
  6. ALL WALLS, RETURNS, COLUMNS AND MONUMENTS ARE SHOWN GRAPHICALLY AND DO NOT REPRESENT ACTUAL SIZE.



KEY MAP

NOT TO SCALE

**Final Site Plan**  
 Haven at Destination  
 NE Corner of Meridian Rd and AZ Route 24  
 Mesa, AZ  
 SHEET TITLE: WALL PLAN



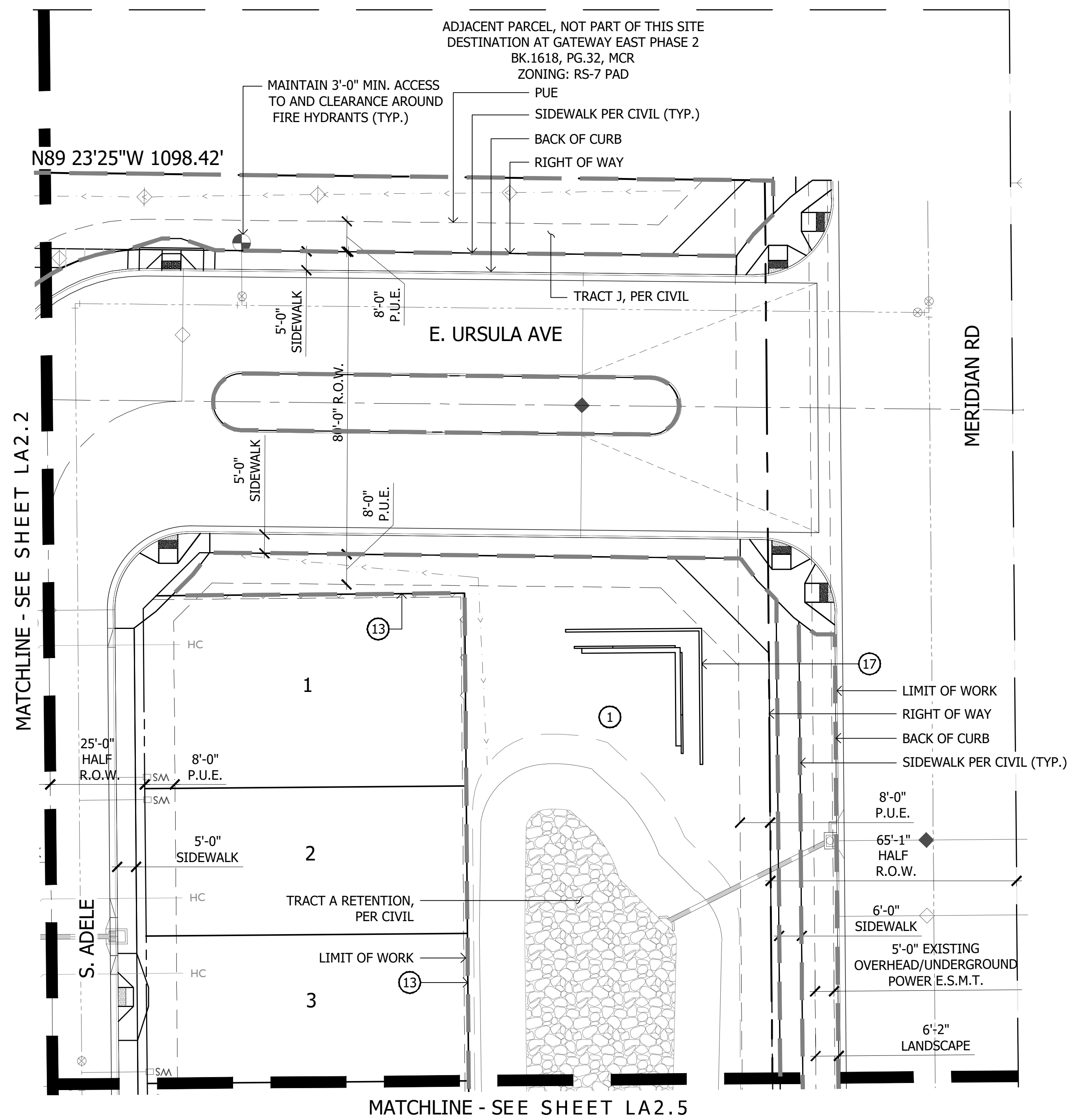
**ABLA**  
 310 E. RIO SALADO PARKWAY  
 TEMPE, ARIZONA 85281  
 OFFICE: 480-530-0077  
 WEB: ABLASTUDIO.COM



© Copyright 2025 ABLA, LLC.

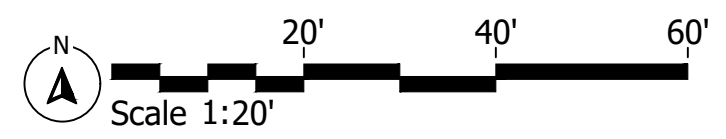
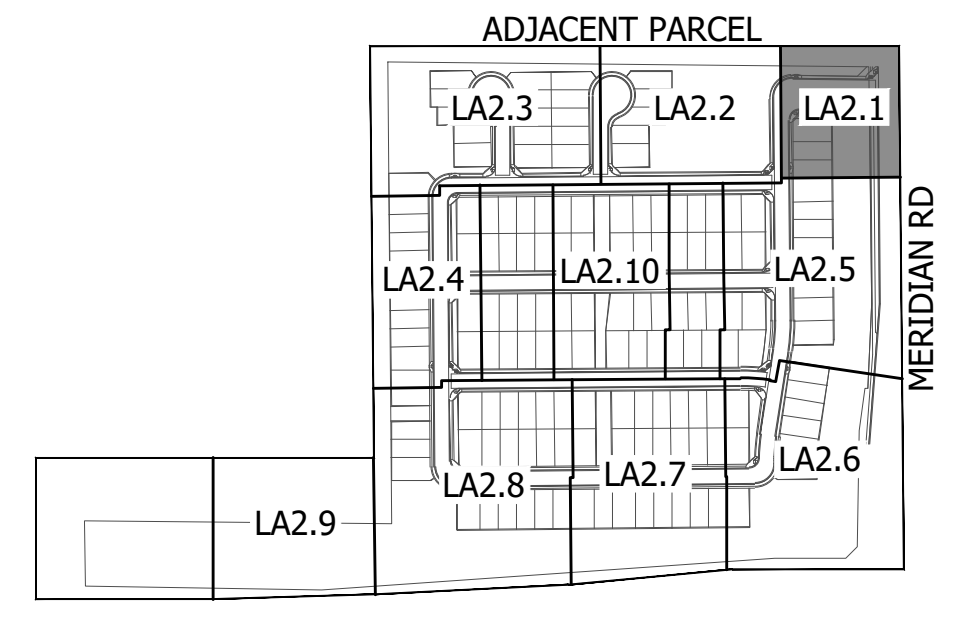
DATE: 10-20-2025  
 ISSUED FOR: 4th Review  
 DRAWN BY: DCR, AS, AR  
 CHECKED BY: MP  
 PERMIT NUMBER:  
 ABLA PROJECT NUMBER:  
 86-131-25

I:\SERVER\ABLA\Projects\Ashton Woods\Meridian & SR24\Landscapes\Design\_Review\_Pre-Plan\02b-Layout\_Meridian&SR24.dwg



- KEYNOTES**
- NOTE:  
SEE MATERIALS SCHEDULE ON SHEET LA0.2 FOR MANUFACTURER INFORMATION, COLORS, AND FINISHES.
- 1 LANDSCAPE AREA WITH DECOMPOSED GRANITE - SEE PLANTING LEGEND
  - 2 5'-0" CONCRETE SIDEWALK - SEE DETAILS 1&2, SHEET LA6.1
  - 3 CONCRETE HEADER - SEE DETAIL 4, SHEET LA6.1
  - 4 CONCRETE TURNDOWN - SEE DETAIL 7, SHEET LA6.1
  - 5 CONCRETE HEADER TURNDOWN - SEE DETAIL 5, SHEET LA6.1
  - 6 CONCRETE PAD
  - 7 DIAMOND SCORED CONCRETE OR APPROVED EQUAL BY OWNER
  - 8 ADA ACCESSIBLE RAMP - SEE DETAIL 3, SHEET LA6.1
  - 9 WOOD FIBER - SEE DETAIL 6, SHEET LA6.1
  - 10 TURF
  - 11 ARTIFICIAL TURF
  - 12 STABILIZED DG - SEE DETAIL 8, SHEET LA6.1
  - 13 THEME WALL - SEE DETAIL 1, SHEET LA6.2
  - 14 CUSTOM SHADE STRUCTURE - SEE DETAIL 1, SHEET LA6.3
  - 15 SWAY BENCH - SEE DETAIL 2, SHEET LA6.3
  - 16 DOOLEY WALL - SEE DETAIL 3, SHEET LA6.2
  - 17 PRIMARY ENTRY MONUMENT - SEE DETAIL 3, SHEET LA6.3
  - 18 PICKLEBALL FENCE - SEE DETAIL 1, SHEET LA6.4
  - 19 SCREEN WALL CONDITION A - SEE DETAIL 2, SHEET LA6.4
  - 20 SCREEN WALL CONDITION B - SEE DETAIL 2, SHEET LA6.4
  - 21 BENCH - SEE DETAIL 5, SHEET LA6.4
  - 22 TRASH RECEPTACLE - SEE DETAIL 6, SHEET LA6.4
  - 23 16' x 16' RAMADA - SEE DETAIL 10, SHEET LA6.4
  - 24 RECTANGULAR PICNIC TABLE - SEE DETAIL 7, SHEET LA6.4
  - 25 ADA ACCESSIBLE PICNIC TABLE - SEE DETAIL 9, SHEET LA6.4
  - 26 BAG TOSS BOARD - SEE DETAIL 8, SHEET LA6.4
  - 27 ORCHID ROPE COURSE (AGES 5-12) - SEE DETAIL 4, SHEET LA6.4
  - 28 DYNAMO PLAY STRUCTURE (AGES 2-5) - SEE DETAIL 3, SHEET LA6.4
  - 29 PICKLE BALL COURT
  - 30 TENSILE SHADE STRUCTURE
  - 31 STAMPED ASPHALT PEDESTRIAN CROSSWALK - SEE DETAIL 9, SHEET LA6.1

- SYMBOLS AND ABBREVIATIONS**
- TYP: TYPICAL
  - POINT OF BEGINNING FOR DIMENSIONS



**KEY MAP**

NOT TO SCALE

1	2	3	4	5	6
---	---	---	---	---	---

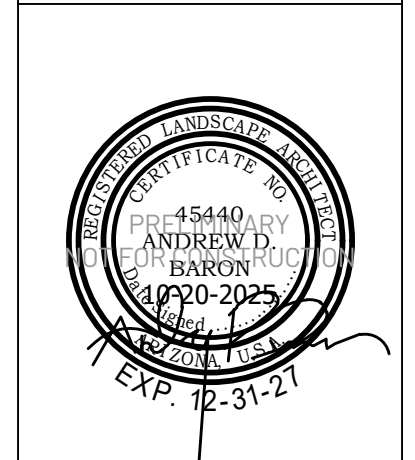
**Final Site Plan**  
Haven at Destination  
NE Corner of Meridian Rd and AZ Route 24  
Mesa, AZ

SHEET TITLE: LAYOUT PLAN



**ABLA**

310 E. RIO SALADO PARKWAY  
TEMPE, ARIZONA 85281  
OFFICE: 480-530-0077  
WEB: ABLASTUDIO.COM

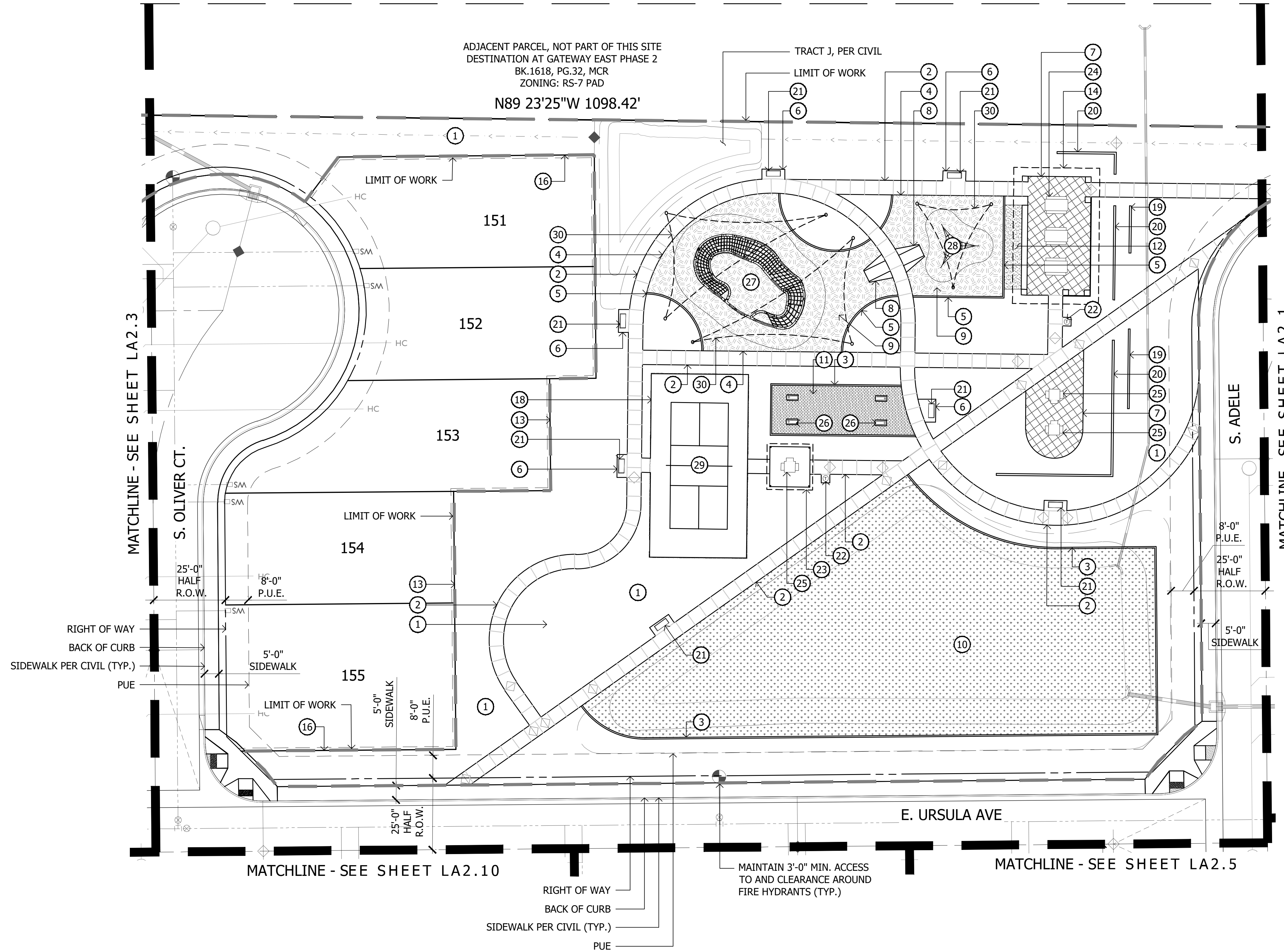


DATE: 10-20-2025  
ISSUED FOR: 4th Review  
DRAWN BY: DCR, AS, AR  
CHECKED BY: MP  
PERMIT NUMBER:  
ABLA PROJECT NUMBER:  
86-131-25

KEYNOTES

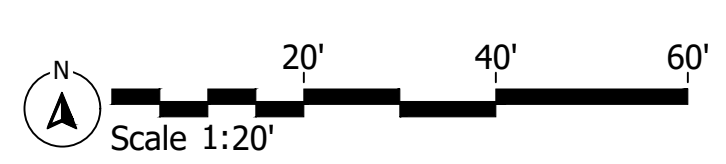
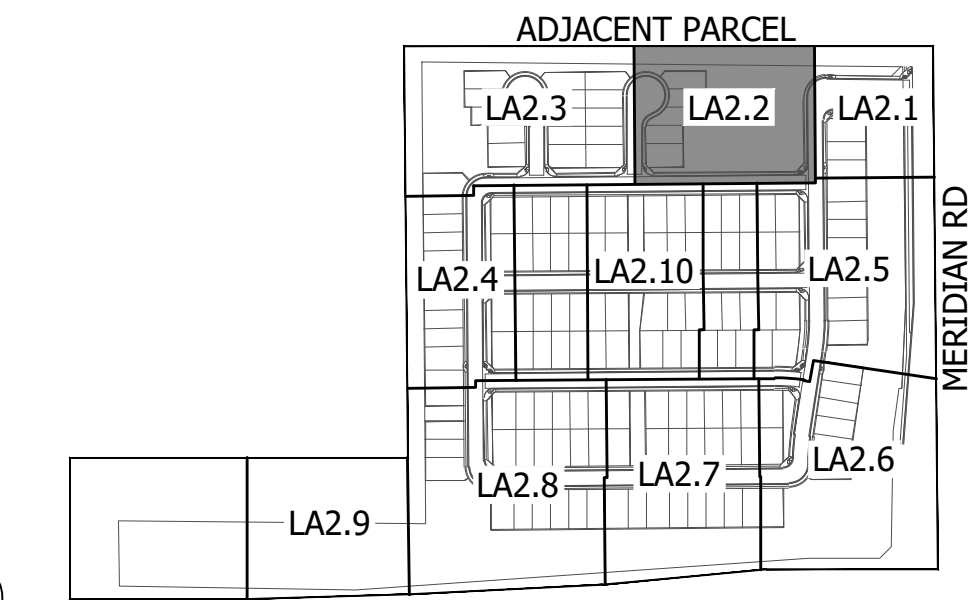
NOTE:  
SEE MATERIALS SCHEDULE ON SHEET LA0.2 FOR MANUFACTURER INFORMATION, COLORS, AND FINISHES.

- ① LANDSCAPE AREA WITH DECOMPOSED GRANITE - SEE PLANTING LEGEND
- ② 5'-0" CONCRETE SIDEWALK - SEE DETAILS 1&2, SHEET LA6.1
- ③ CONCRETE HEADER - SEE DETAIL 4, SHEET LA6.1
- ④ CONCRETE TURNDOWN - SEE DETAIL 7, SHEET LA6.1
- ⑤ CONCRETE HEADER TURNDOWN - SEE DETAIL 5, SHEET LA6.1
- ⑥ CONCRETE PAD
- ⑦ DIAMOND SCORED CONCRETE OR APPROVED EQUAL BY OWNER
- ⑧ ADA ACCESSIBLE RAMP - SEE DETAIL 3, SHEET LA6.1
- ⑨ WOOD FIBER - SEE DETAIL 6, SHEET LA6.1
- ⑩ TURF
- ⑪ ARTIFICIAL TURF
- ⑫ STABILIZED DG - SEE DETAIL 8, SHEET LA6.1
- ⑬ THEME WALL - SEE DETAIL 1, SHEET LA6.2
- ⑭ CUSTOM SHADE STRUCTURE - SEE DETAIL 1, SHEET LA6.3
- ⑮ SWAY BENCH - SEE DETAIL 2, SHEET LA6.3
- ⑯ DOOLEY WALL - SEE DETAIL 3, SHEET LA6.2
- ⑰ PRIMARY ENTRY MONUMENT - SEE DETAIL 3, SHEET LA6.3
- ⑱ PICKLEBALL FENCE - SEE DETAIL 1, SHEET LA6.4
- ⑲ SCREEN WALL CONDITION A - SEE DETAIL 2, SHEET LA6.4
- ⑳ SCREEN WALL CONDITION B - SEE DETAIL 2, SHEET LA6.4
- ㉑ BENCH - SEE DETAIL 5, SHEET LA6.4
- ㉒ TRASH RECEPTACLE - SEE DETAIL 6, SHEET LA6.4
- ㉓ 16' x 16' RAMADA - SEE DETAIL 10, SHEET LA6.4
- ㉔ RECTANGULAR PICNIC TABLE - SEE DETAIL 7, SHEET LA6.4
- ㉕ ADA ACCESSIBLE PICNIC TABLE - SEE DETAIL 9, SHEET LA6.4
- ㉖ BAG TOSS BOARD - SEE DETAIL 8, SHEET LA6.4
- ㉗ ORCHID ROPE COURSE (AGES 5-12) - SEE DETAIL 4, SHEET LA6.4
- ㉘ DYNAMO PLAY STRUCTURE (AGES 2-5) - SEE DETAIL 3, SHEET LA6.4
- ㉙ PICKLE BALL COURT
- ㉚ TENSILE SHADE STRUCTURE
- ㉛ STAMPED ASPHALT PEDESTRIAN CROSSWALK - SEE DETAIL 9, SHEET LA6.1



SYMBOLS AND ABBREVIATIONS

- ⊙ TYP: TYPICAL
- ⊙ POINT OF BEGINNING FOR DIMENSIONS



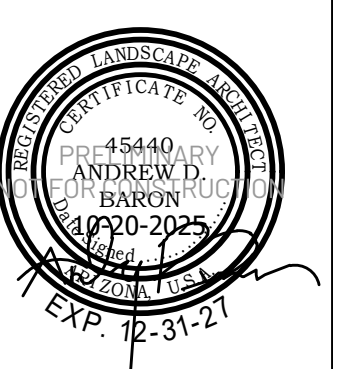
KEY MAP

NOT TO SCALE

**Final Site Plan**  
 Haven at Destination  
 NE Corner of Meridian Rd and AZ Route 24  
 Mesa, AZ  
 SHEET TITLE: LAYOUT PLAN



**ABLA**  
 310 E. RIO SALADO PARKWAY  
 TEMPE, ARIZONA 85281  
 OFFICE: 480-530-0077  
 WEB: ABLASTUDIO.COM



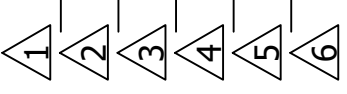
© Copyright 2025 ABLA, LLC.

DATE: 10-20-2025  
 ISSUED FOR: 4th Review  
 DRAWN BY: DCR, AS, AR  
 CHECKED BY: MP  
 PERMIT NUMBER:  
 ABLA PROJECT NUMBER:  
 86-131-25

KEYNOTES

NOTE:  
SEE MATERIALS SCHEDULE ON SHEET LA0.2 FOR MANUFACTURER INFORMATION, COLORS, AND FINISHES.

- ① LANDSCAPE AREA WITH DECOMPOSED GRANITE - SEE PLANTING LEGEND
- ② 5'-0" CONCRETE SIDEWALK - SEE DETAILS 1&2, SHEET LA6.1
- ③ CONCRETE HEADER - SEE DETAIL 4, SHEET LA6.1
- ④ CONCRETE TURNDOWN - SEE DETAIL 7, SHEET LA6.1
- ⑤ CONCRETE HEADER TURNDOWN - SEE DETAIL 5, SHEET LA6.1
- ⑥ CONCRETE PAD
- ⑦ DIAMOND SCORED CONCRETE OR APPROVED EQUAL BY OWNER
- ⑧ ADA ACCESSIBLE RAMP - SEE DETAIL 3, SHEET LA6.1
- ⑨ WOOD FIBER - SEE DETAIL 6, SHEET LA6.1
- ⑩ TURF
- ⑪ ARTIFICIAL TURF
- ⑫ STABILIZED DG - SEE DETAIL 8, SHEET LA6.1
- ⑬ THEME WALL - SEE DETAIL 1, SHEET LA6.2
- ⑭ CUSTOM SHADE STRUCTURE - SEE DETAIL 1, SHEET LA6.3
- ⑮ SWAY BENCH - SEE DETAIL 2, SHEET LA6.3
- ⑯ DOOLEY WALL - SEE DETAIL 3, SHEET LA6.2
- ⑰ PRIMARY ENTRY MONUMENT - SEE DETAIL 3, SHEET LA6.3
- ⑱ PICKLEBALL FENCE - SEE DETAIL 1, SHEET LA6.4
- ⑲ SCREEN WALL CONDITION A - SEE DETAIL 2, SHEET LA6.4
- ⑳ SCREEN WALL CONDITION B - SEE DETAIL 2, SHEET LA6.4
- ㉑ BENCH - SEE DETAIL 5, SHEET LA6.4
- ㉒ TRASH RECEPTACLE - SEE DETAIL 6, SHEET LA6.4
- ㉓ 16' x 16' RAMADA - SEE DETAIL 10, SHEET LA6.4
- ㉔ RECTANGULAR PICNIC TABLE - SEE DETAIL 7, SHEET LA6.4
- ㉕ ADA ACCESSIBLE PICNIC TABLE - SEE DETAIL 9, SHEET LA6.4
- ㉖ BAG TOSS BOARD - SEE DETAIL 8, SHEET LA6.4
- ㉗ ORCHID ROPE COURSE (AGES 5-12) - SEE DETAIL 4, SHEET LA6.4
- ㉘ DYNAMO PLAY STRUCTURE (AGES 2-5) - SEE DETAIL 3, SHEET LA6.4
- ㉙ PICKLE BALL COURT
- ㉚ TENSILE SHADE STRUCTURE
- ㉛ STAMPED ASPHALT PEDESTRIAN CROSSWALK - SEE DETAIL 9, SHEET LA6.1



**Final Site Plan**  
 Haven at Destination  
 NE Corner of Meridian Rd and AZ Route 24  
 Mesa, AZ  
 SHEET TITLE: LAYOUT PLAN



**ABLA**  
 310 E. RIO SALADO PARKWAY  
 TEMPE, ARIZONA 85281  
 OFFICE: 480-530-0077  
 WEB: ABLASTUDIO.COM

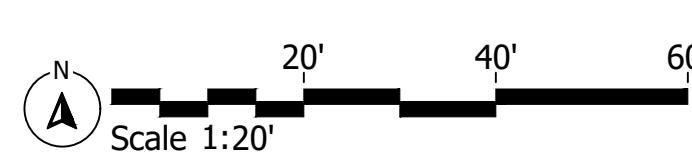
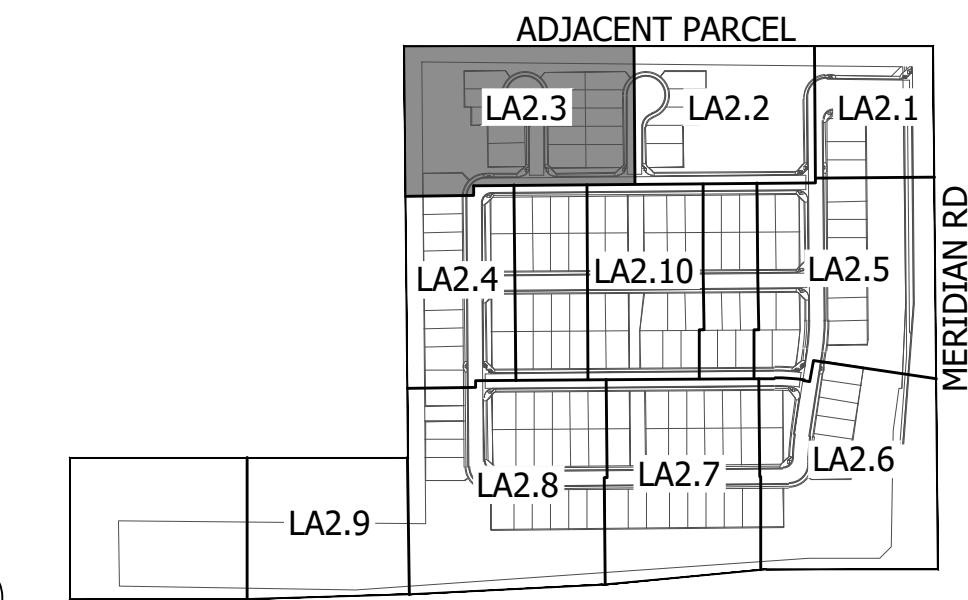


© Copyright 2025 ABLA, LLC.

DATE: 10-20-2025  
 ISSUED FOR: 4th Review  
 DRAWN BY: DCR, AS, AR  
 CHECKED BY: MP  
 PERMIT NUMBER:  
 ABLA PROJECT NUMBER:  
 86-131-25

SYMBOLS AND ABBREVIATIONS

- TYP: TYPICAL
- POINT OF BEGINNING FOR DIMENSIONS

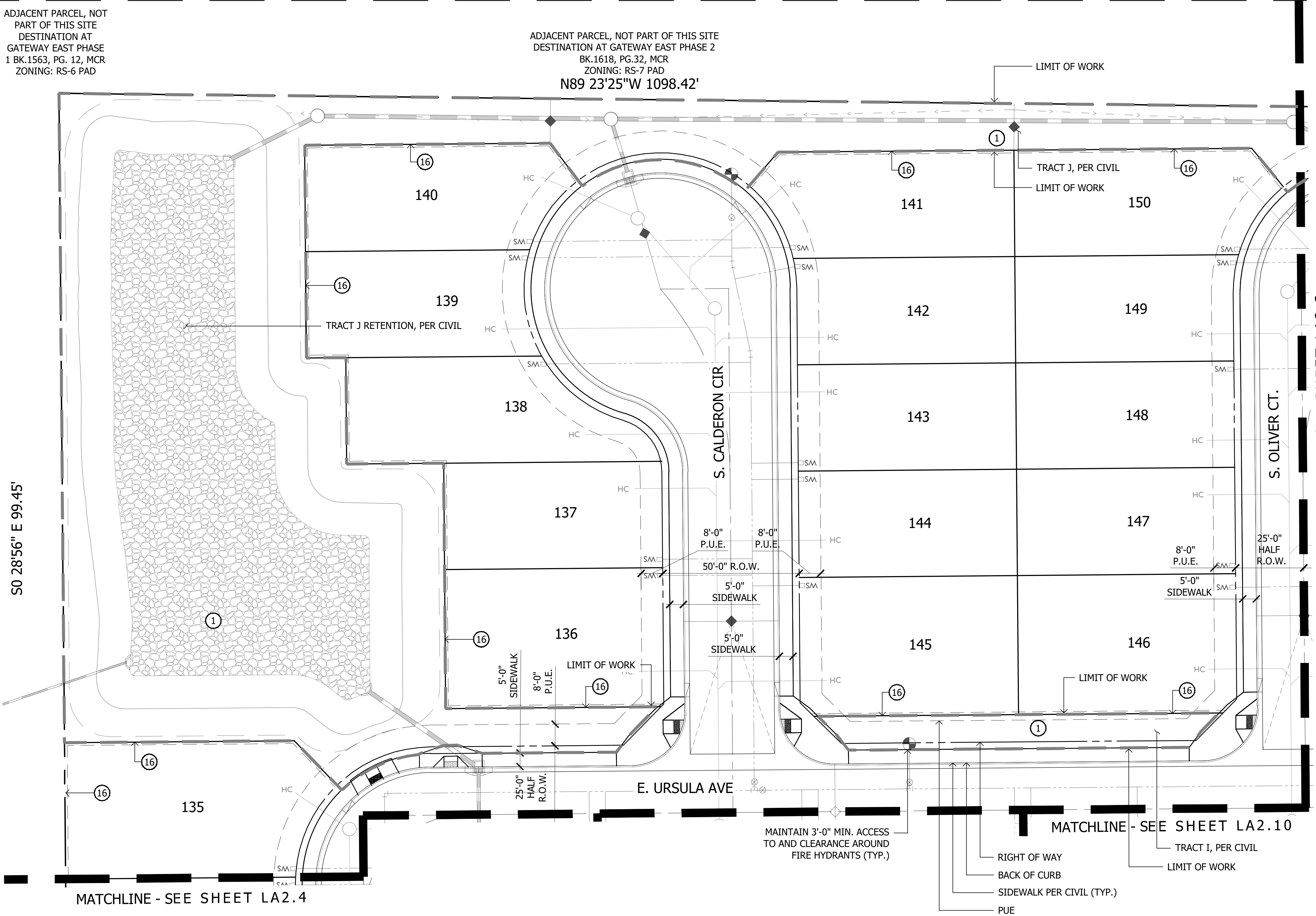


KEY MAP

NOT TO SCALE

ADJACENT PARCEL, NOT PART OF THIS SITE  
DESTINATION AT GATEWAY EAST PHASE  
1 BK.1563, PG. 12, MCR  
ZONING: RS-6 PAD

ADJACENT PARCEL, NOT PART OF THIS SITE  
DESTINATION AT GATEWAY EAST PHASE 2  
BK.1618, PG.32, MCR  
ZONING: RS-7 PAD



S0 28'56" E 99.45'

N89 23'25"W 1098.42'

MATCHLINE - SEE SHEET LA2.4

MATCHLINE - SEE SHEET LA2.10

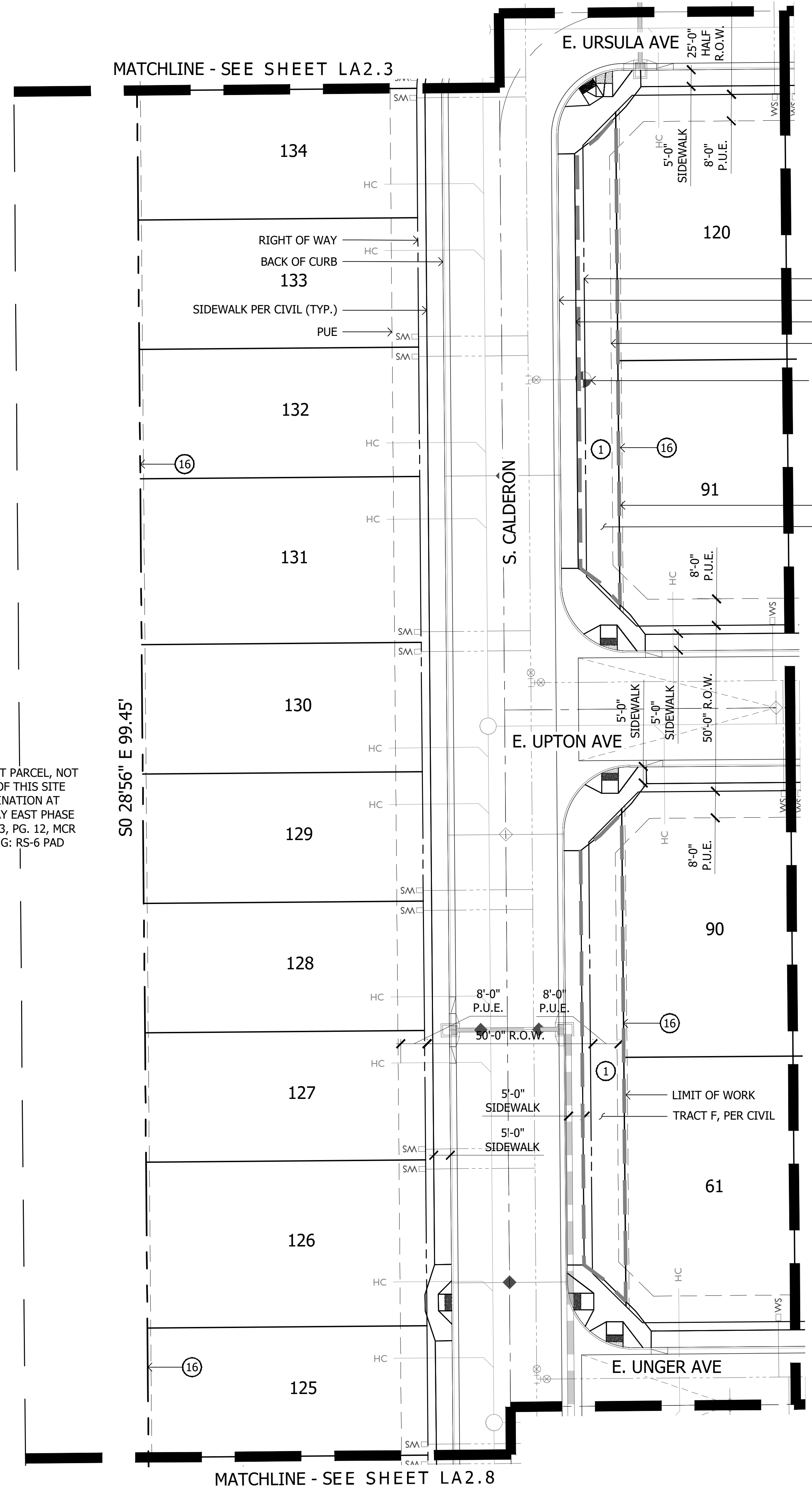
MATCHLINE - SEE SHEET LA2.2

MAINTAIN 3'-0" MIN. ACCESS TO AND CLEARANCE AROUND FIRE HYDRANTS (TYP.)

- RIGHT OF WAY
- BACK OF CURB
- SIDEWALK PER CIVIL (TYP.)
- PUE
- TRACT I, PER CIVIL
- LIMIT OF WORK

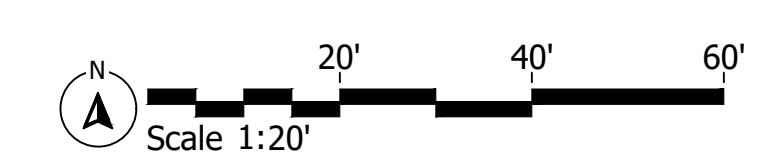
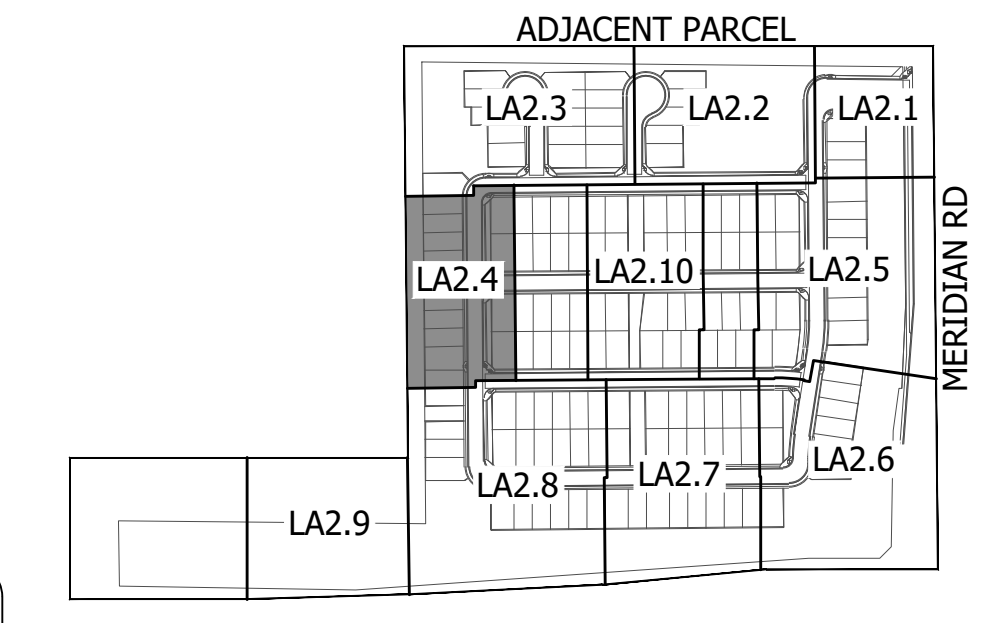
I:\SERVER\ABLA\Projects\Ashton Woods\Meridian & SR24\Landscapes\Design\_Review\_Pre-Plan\02b-Layout\_Meridian&SR24.dwg

ADJACENT PARCEL, NOT PART OF THIS SITE DESTINATION AT GATEWAY EAST PHASE 1 BK.1563, PG. 12, MCR ZONING: RS-6 PAD



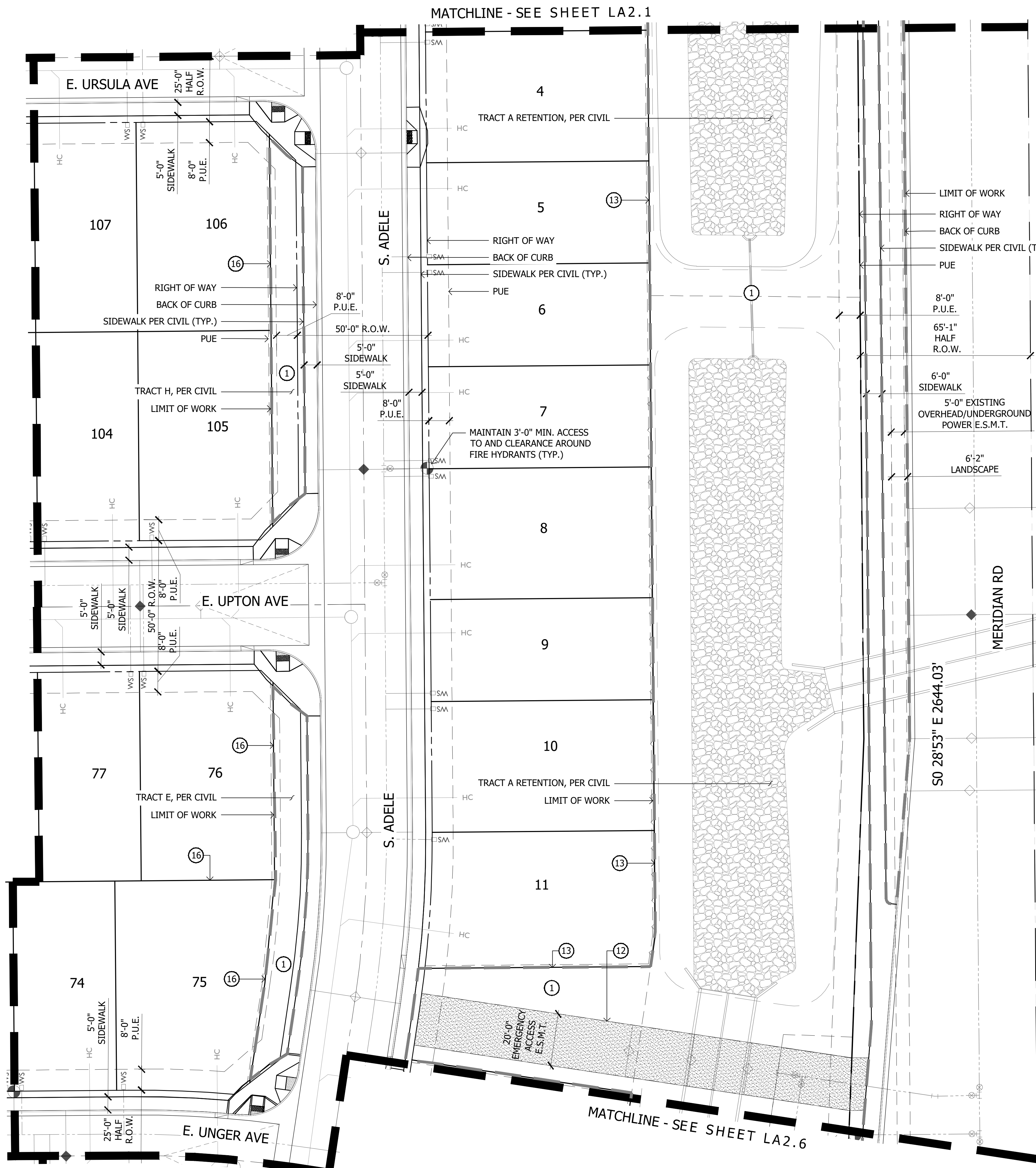
- ### KEYNOTES
- NOTE:  
SEE MATERIALS SCHEDULE ON SHEET LA0.2 FOR MANUFACTURER INFORMATION, COLORS, AND FINISHES.
- ① LANDSCAPE AREA WITH DECOMPOSED GRANITE - SEE PLANTING LEGEND
  - ② 5'-0" CONCRETE SIDEWALK - SEE DETAILS 1&2, SHEET LA6.1
  - ③ CONCRETE HEADER - SEE DETAIL 4, SHEET LA6.1
  - ④ CONCRETE TURNDOWN - SEE DETAIL 7, SHEET LA6.1
  - ⑤ CONCRETE HEADER TURNDOWN - SEE DETAIL 5, SHEET LA6.1
  - ⑥ CONCRETE PAD
  - ⑦ DIAMOND SCORED CONCRETE OR APPROVED EQUAL BY OWNER
  - ⑧ ADA ACCESSIBLE RAMP - SEE DETAIL 3, SHEET LA6.1
  - ⑨ WOOD FIBER - SEE DETAIL 6, SHEET LA6.1
  - ⑩ TURF
  - ⑪ ARTIFICIAL TURF
  - ⑫ STABILIZED DG - SEE DETAIL 8, SHEET LA6.1
  - ⑬ THEME WALL - SEE DETAIL 1, SHEET LA6.2
  - ⑭ CUSTOM SHADE STRUCTURE - SEE DETAIL 1, SHEET LA6.3
  - ⑮ SWAY BENCH - SEE DETAIL 2, SHEET LA6.3
  - ⑯ DOOLEY WALL - SEE DETAIL 3, SHEET LA6.2
  - ⑰ PRIMARY ENTRY MONUMENT - SEE DETAIL 3, SHEET LA6.3
  - ⑱ PICKLEBALL FENCE - SEE DETAIL 1, SHEET LA6.4
  - ⑲ SCREEN WALL CONDITION A - SEE DETAIL 2, SHEET LA6.4
  - ⑳ SCREEN WALL CONDITION B - SEE DETAIL 2, SHEET LA6.4
  - ㉑ BENCH - SEE DETAIL 5, SHEET LA6.4
  - ㉒ TRASH RECEPTACLE - SEE DETAIL 6, SHEET LA6.4
  - ㉓ 16' x 16' RAMADA - SEE DETAIL 10, SHEET LA6.4
  - ㉔ RECTANGULAR PICNIC TABLE - SEE DETAIL 7, SHEET LA6.4
  - ㉕ ADA ACCESSIBLE PICNIC TABLE - SEE DETAIL 9, SHEET LA6.4
  - ㉖ BAG TOSS BOARD - SEE DETAIL 8, SHEET LA6.4
  - ㉗ ORCHID ROPE COURSE (AGES 5-12) - SEE DETAIL 4, SHEET LA6.4
  - ㉘ DYNAMO PLAY STRUCTURE (AGES 2-5) - SEE DETAIL 3, SHEET LA6.4
  - ㉙ PICKLE BALL COURT
  - ㉚ TENSILE SHADE STRUCTURE
  - ㉛ STAMPED ASPHALT PEDESTRIAN CROSSWALK - SEE DETAIL 9, SHEET LA6.1

- ### SYMBOLS AND ABBREVIATIONS
- TYP: TYPICAL
  - POINT OF BEGINNING FOR DIMENSIONS



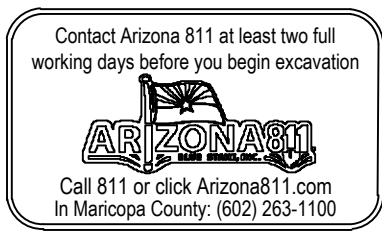
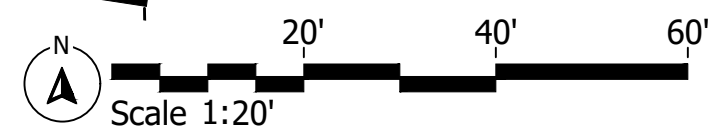
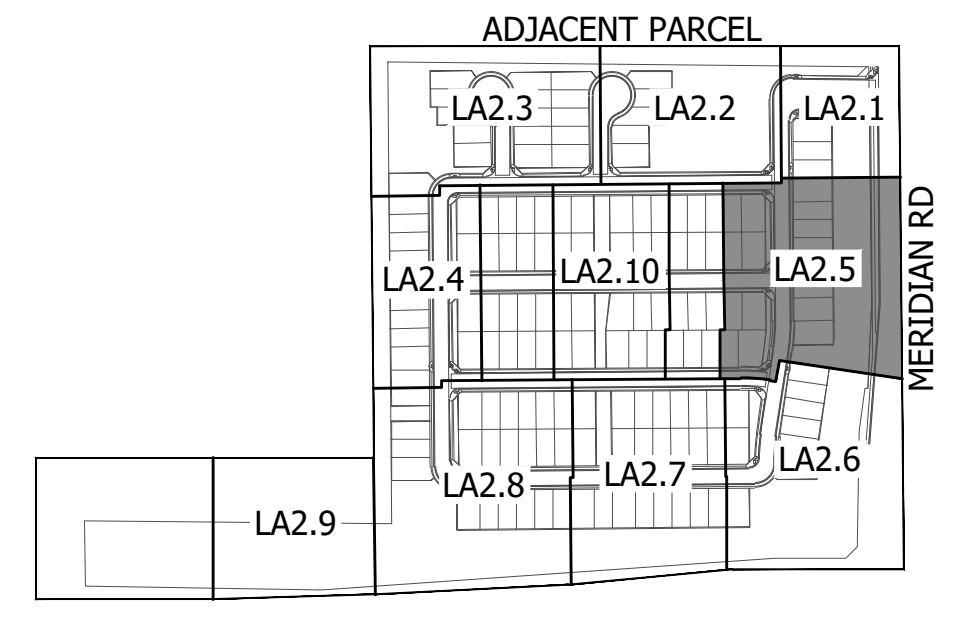
KEY MAP NOT TO SCALE

	<p><b>Final Site Plan</b> Haven at Destination NE Corner of Meridian RD and AZ Route 24 Mesa, AZ</p>	<p>SHEET TITLE: LAYOUT PLAN</p>
<p>310 E. RIO SALADO PARKWAY TEMPE, ARIZONA 85281 OFFICE: 480-530-0077 WEB: ABLASTUDIO.COM</p>		
<p>© Copyright 2025 ABLA, LLC.</p>		
<p>DATE: 10-20-2025</p>	<p>ISSUED FOR: 4th Review</p>	<p>DRAWN BY: DCR, AS, AR</p>
		<p>CHECKED BY: MP</p>
		<p>PERMIT NUMBER:</p>
		<p>ABLA PROJECT NUMBER: 86-131-25</p>
<p><b>LA2.4</b></p>		
<p>PG: 6 OF 28</p>		



- KEYNOTES**
- NOTE:  
SEE MATERIALS SCHEDULE ON SHEET LA0.2 FOR MANUFACTURER INFORMATION, COLORS, AND FINISHES.
- 1 LANDSCAPE AREA WITH DECOMPOSED GRANITE - SEE PLANTING LEGEND
  - 2 5'-0" CONCRETE SIDEWALK - SEE DETAILS 1&2, SHEET LA6.1
  - 3 CONCRETE HEADER - SEE DETAIL 4, SHEET LA6.1
  - 4 CONCRETE TURNDOWN - SEE DETAIL 7, SHEET LA6.1
  - 5 CONCRETE HEADER TURNDOWN - SEE DETAIL 5, SHEET LA6.1
  - 6 CONCRETE PAD
  - 7 DIAMOND SCORED CONCRETE OR APPROVED EQUAL BY OWNER
  - 8 ADA ACCESSIBLE RAMP - SEE DETAIL 3, SHEET LA6.1
  - 9 WOOD FIBER - SEE DETAIL 6, SHEET LA6.1
  - 10 TURF
  - 11 ARTIFICIAL TURF
  - 12 STABILIZED DG - SEE DETAIL 8, SHEET LA6.1
  - 13 THEME WALL - SEE DETAIL 1, SHEET LA6.2
  - 14 CUSTOM SHADE STRUCTURE - SEE DETAIL 1, SHEET LA6.3
  - 15 SWAY BENCH - SEE DETAIL 2, SHEET LA6.3
  - 16 DOOLEY WALL - SEE DETAIL 3, SHEET LA6.2
  - 17 PRIMARY ENTRY MONUMENT - SEE DETAIL 3, SHEET LA6.3
  - 18 PICKLEBALL FENCE - SEE DETAIL 1, SHEET LA6.4
  - 19 SCREEN WALL CONDITION A - SEE DETAIL 2, SHEET LA6.4
  - 20 SCREEN WALL CONDITION B - SEE DETAIL 2, SHEET LA6.4
  - 21 BENCH - SEE DETAIL 5, SHEET LA6.4
  - 22 TRASH RECEPTACLE - SEE DETAIL 6, SHEET LA6.4
  - 23 16' x 16' RAMADA - SEE DETAIL 10, SHEET LA6.4
  - 24 RECTANGULAR PICNIC TABLE - SEE DETAIL 7, SHEET LA6.4
  - 25 ADA ACCESSIBLE PICNIC TABLE - SEE DETAIL 9, SHEET LA6.4
  - 26 BAG TOSS BOARD - SEE DETAIL 8, SHEET LA6.4
  - 27 ORCHID ROPE COURSE (AGES 5-12) - SEE DETAIL 4, SHEET LA6.4
  - 28 DYNAMO PLAY STRUCTURE (AGES 2-5) - SEE DETAIL 3, SHEET LA6.4
  - 29 PICKLE BALL COURT
  - 30 TENSILE SHADE STRUCTURE
  - 31 STAMPED ASPHALT PEDESTRIAN CROSSWALK - SEE DETAIL 9, SHEET LA6.1

- SYMBOLS AND ABBREVIATIONS**
- TYP: TYPICAL
  - POINT OF BEGINNING FOR DIMENSIONS



**KEY MAP** NOT TO SCALE

**Final Site Plan**  
Haven at Destination  
NE Corner of Meridian Rd and AZ Route 24  
Mesa, AZ

SHEET TITLE: LAYOUT PLAN

**AW**  
ASHTON WOODS

**ABLA**

310 E. RIO SALADO PARKWAY  
TEMPE, ARIZONA 85281  
OFFICE: 480-530-0077  
WEB: ABLASTUDIO.COM

© Copyright 2025 ABLA, LLC.

DATE: 10-20-2025  
ISSUED FOR: 4th Review  
DRAWN BY: DCR, AS, AR  
CHECKED BY: MP  
PERMIT NUMBER:  
ABLA PROJECT NUMBER:  
86-131-25

**LA2.5**

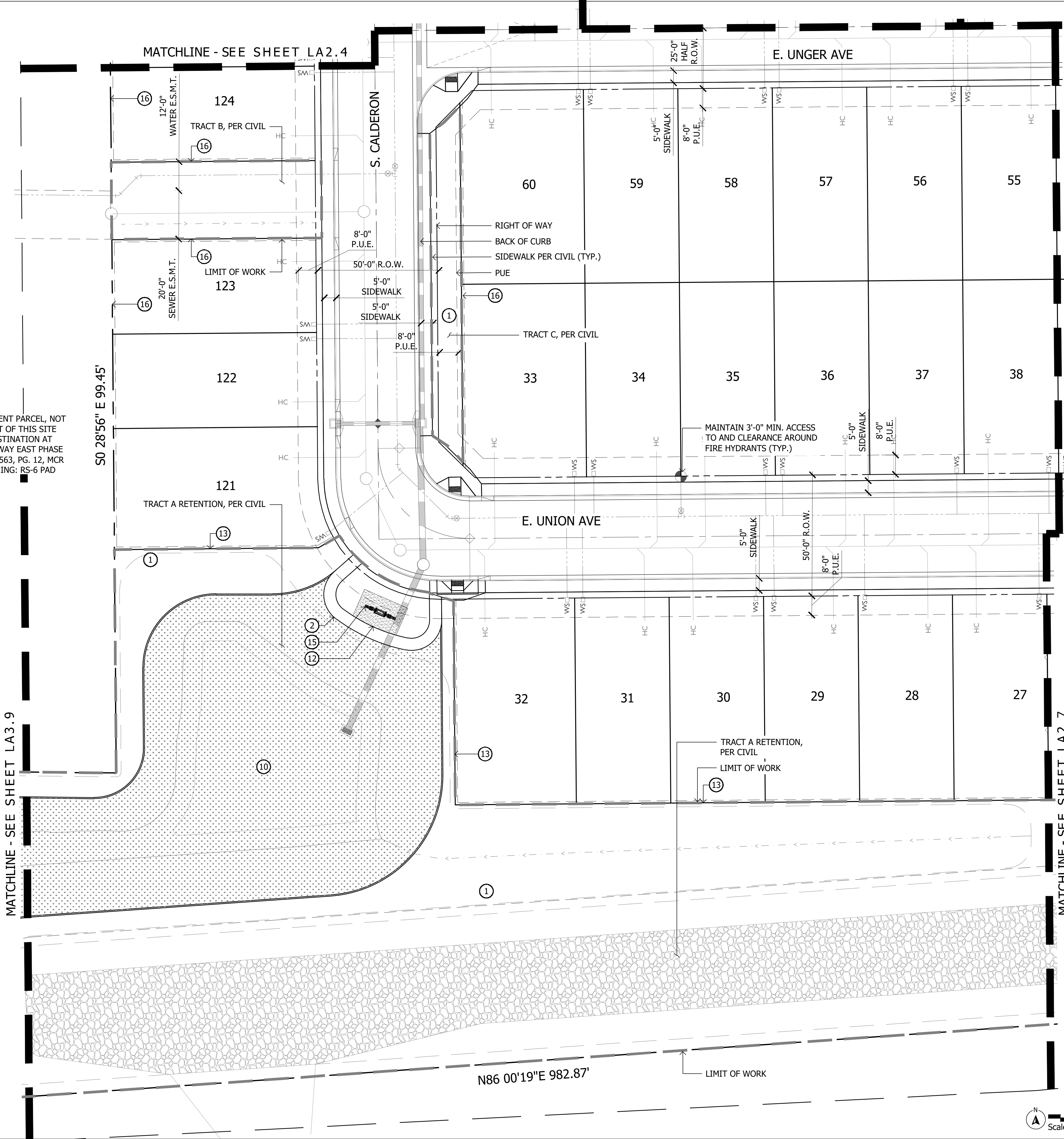
PG: 7 OF 28





ADJACENT PARCEL, NOT PART OF THIS SITE DESTINATION AT GATEWAY EAST PHASE 1 BK.1563, PG. 12, MCR ZONING: RS-6 PAD

MATCHLINE - SEE SHEET LA3.9

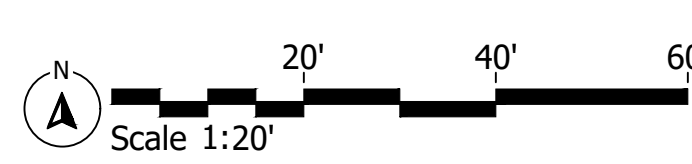
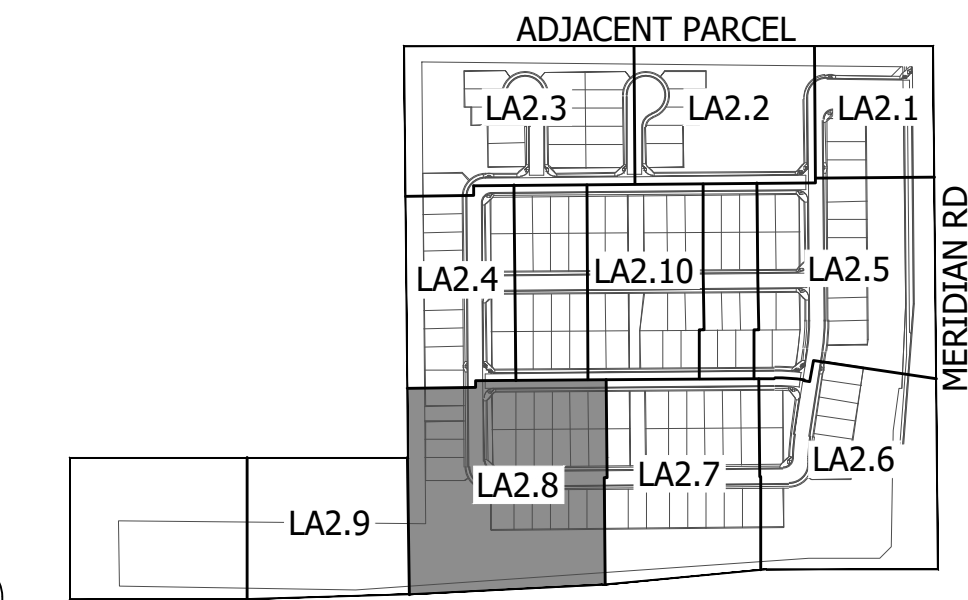


KEYNOTES

- NOTE:  
SEE MATERIALS SCHEDULE ON SHEET LA0.2 FOR MANUFACTURER INFORMATION, COLORS, AND FINISHES.
- 1 LANDSCAPE AREA WITH DECOMPOSED GRANITE - SEE PLANTING LEGEND
  - 2 5'-0" CONCRETE SIDEWALK - SEE DETAILS 1&2, SHEET LA6.1
  - 3 CONCRETE HEADER - SEE DETAIL 4, SHEET LA6.1
  - 4 CONCRETE TURNDOWN - SEE DETAIL 7, SHEET LA6.1
  - 5 CONCRETE HEADER TURNDOWN - SEE DETAIL 5, SHEET LA6.1
  - 6 CONCRETE PAD
  - 7 DIAMOND SCORED CONCRETE OR APPROVED EQUAL BY OWNER
  - 8 ADA ACCESSIBLE RAMP - SEE DETAIL 3, SHEET LA6.1
  - 9 WOOD FIBER - SEE DETAIL 6, SHEET LA6.1
  - 10 TURF
  - 11 ARTIFICIAL TURF
  - 12 STABILIZED DG - SEE DETAIL 8, SHEET LA6.1
  - 13 THEME WALL - SEE DETAIL 1, SHEET LA6.2
  - 14 CUSTOM SHADE STRUCTURE - SEE DETAIL 1, SHEET LA6.3
  - 15 SWAY BENCH - SEE DETAIL 2, SHEET LA6.3
  - 16 DOOLEY WALL - SEE DETAIL 3, SHEET LA6.2
  - 17 PRIMARY ENTRY MONUMENT - SEE DETAIL 3, SHEET LA6.3
  - 18 PICKLEBALL FENCE - SEE DETAIL 1, SHEET LA6.4
  - 19 SCREEN WALL CONDITION A - SEE DETAIL 2, SHEET LA6.4
  - 20 SCREEN WALL CONDITION B - SEE DETAIL 2, SHEET LA6.4
  - 21 BENCH - SEE DETAIL 5, SHEET LA6.4
  - 22 TRASH RECEPTACLE - SEE DETAIL 6, SHEET LA6.4
  - 23 16' x 16' RAMADA - SEE DETAIL 10, SHEET LA6.4
  - 24 RECTANGULAR PICNIC TABLE - SEE DETAIL 7, SHEET LA6.4
  - 25 ADA ACCESSIBLE PICNIC TABLE - SEE DETAIL 9, SHEET LA6.4
  - 26 BAG TOSS BOARD - SEE DETAIL 8, SHEET LA6.4
  - 27 ORCHID ROPE COURSE (AGES 5-12) - SEE DETAIL 4, SHEET LA6.4
  - 28 DYNAMO PLAY STRUCTURE (AGES 2-5) - SEE DETAIL 3, SHEET LA6.4
  - 29 PICKLE BALL COURT
  - 30 TENSILE SHADE STRUCTURE
  - 31 STAMPED ASPHALT PEDESTRIAN CROSSWALK - SEE DETAIL 9, SHEET LA6.1

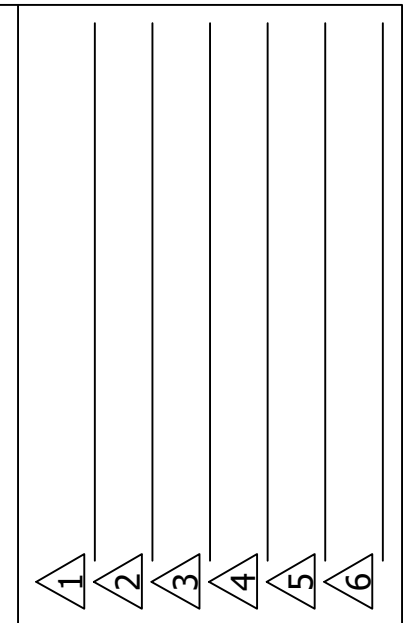
SYMBOLS AND ABBREVIATIONS

- TYP: TYPICAL
- POINT OF BEGINNING FOR DIMENSIONS



KEY MAP

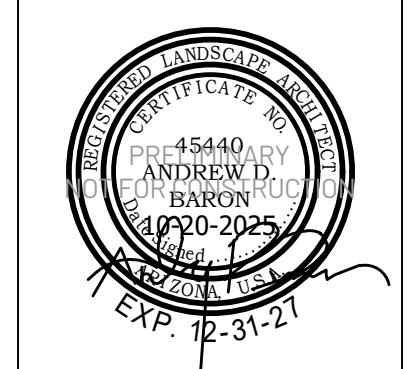
NOT TO SCALE



**Final Site Plan**  
Haven at Destination  
NE Corner of Meridian Rd and AZ Route 24  
Mesa, AZ  
SHEET TITLE: LAYOUT PLAN



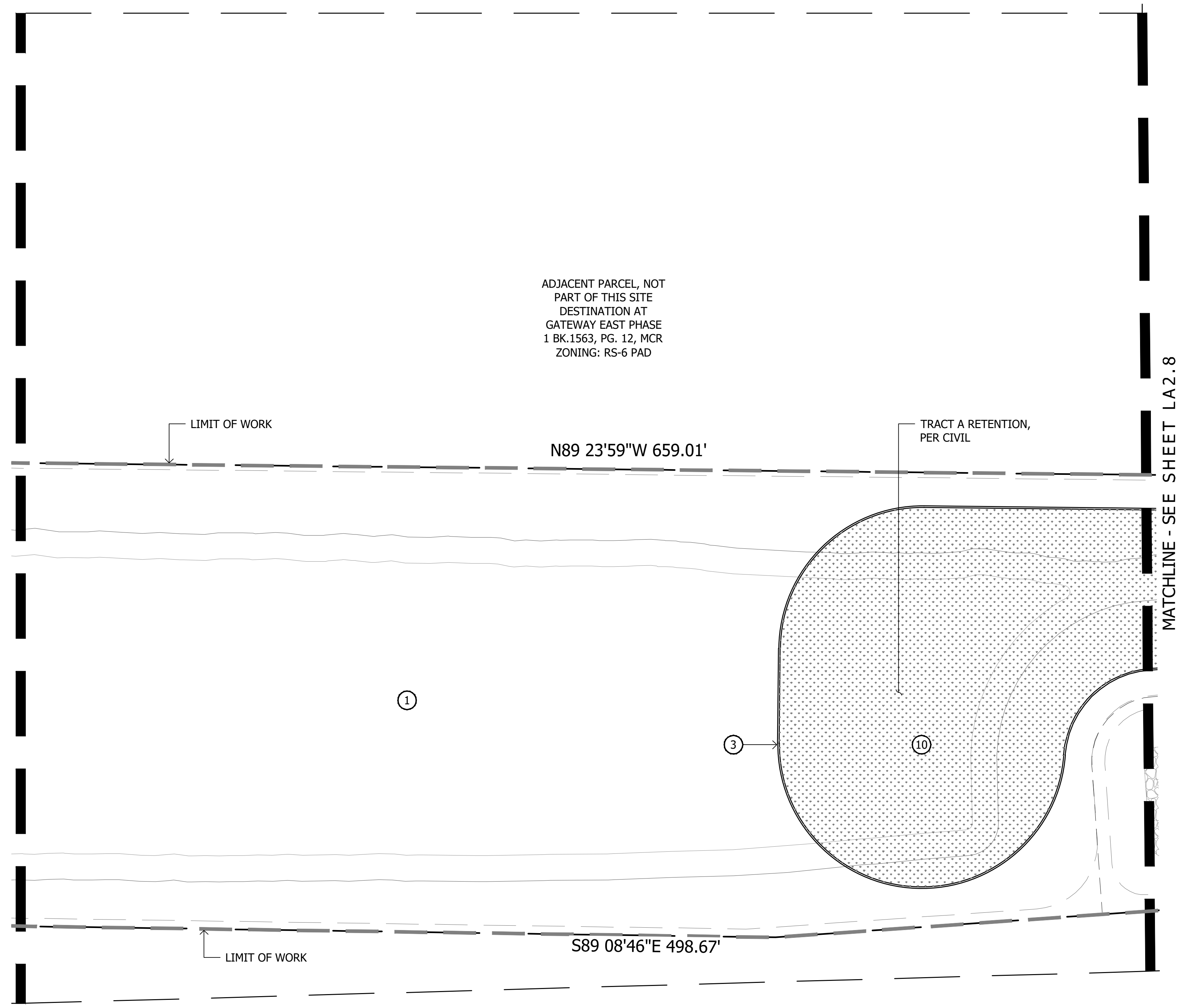
**ABLA**  
310 E. RIO SALADO PARKWAY  
TEMPE, ARIZONA 85281  
OFFICE: 480-530-0077  
WEB: ABLASTUDIO.COM



DATE: 10-20-2025  
ISSUED FOR: 4th Review  
DRAWN BY: DCR, AS, AR  
CHECKED BY: MP  
PERMIT NUMBER:  
ABLA PROJECT NUMBER:  
86-131-25

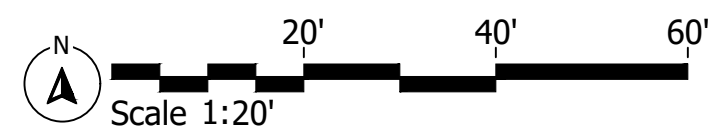
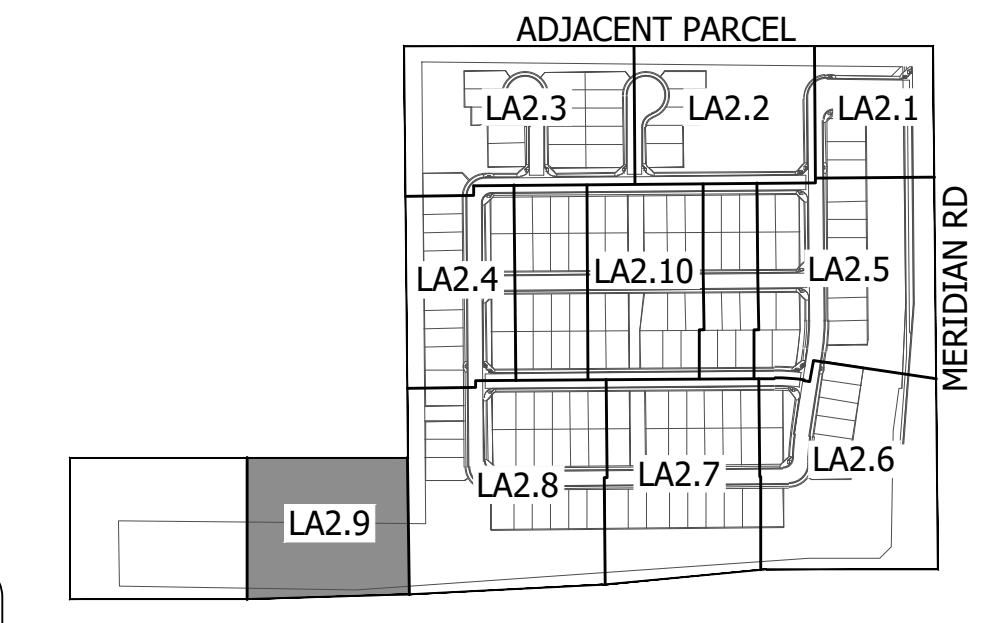
KEYNOTES

- NOTE:  
SEE MATERIALS SCHEDULE ON SHEET LA0.2 FOR MANUFACTURER INFORMATION, COLORS, AND FINISHES.
- ① LANDSCAPE AREA WITH DECOMPOSED GRANITE - SEE PLANTING LEGEND
  - ② 5'-0" CONCRETE SIDEWALK - SEE DETAILS 1&2, SHEET LA6.1
  - ③ CONCRETE HEADER - SEE DETAIL 4, SHEET LA6.1
  - ④ CONCRETE TURNDOWN - SEE DETAIL 7, SHEET LA6.1
  - ⑤ CONCRETE HEADER TURNDOWN - SEE DETAIL 5, SHEET LA6.1
  - ⑥ CONCRETE PAD
  - ⑦ DIAMOND SCORED CONCRETE OR APPROVED EQUAL BY OWNER
  - ⑧ ADA ACCESSIBLE RAMP - SEE DETAIL 3, SHEET LA6.1
  - ⑨ WOOD FIBER - SEE DETAIL 6, SHEET LA6.1
  - ⑩ TURF
  - ⑪ ARTIFICIAL TURF
  - ⑫ STABILIZED DG - SEE DETAIL 8, SHEET LA6.1
  - ⑬ THEME WALL - SEE DETAIL 1, SHEET LA6.2
  - ⑭ CUSTOM SHADE STRUCTURE - SEE DETAIL 1, SHEET LA6.3
  - ⑮ SWAY BENCH - SEE DETAIL 2, SHEET LA6.3
  - ⑯ DOOLEY WALL - SEE DETAIL 3, SHEET LA6.2
  - ⑰ PRIMARY ENTRY MONUMENT - SEE DETAIL 3, SHEET LA6.3
  - ⑱ PICKLEBALL FENCE - SEE DETAIL 1, SHEET LA6.4
  - ⑲ SCREEN WALL CONDITION A - SEE DETAIL 2, SHEET LA6.4
  - ⑳ SCREEN WALL CONDITION B - SEE DETAIL 2, SHEET LA6.4
  - ㉑ BENCH - SEE DETAIL 5, SHEET LA6.4
  - ㉒ TRASH RECEPTACLE - SEE DETAIL 6, SHEET LA6.4
  - ㉓ 16' x 16' RAMADA - SEE DETAIL 10, SHEET LA6.4
  - ㉔ RECTANGULAR PICNIC TABLE - SEE DETAIL 7, SHEET LA6.4
  - ㉕ ADA ACCESSIBLE PICNIC TABLE - SEE DETAIL 9, SHEET LA6.4
  - ㉖ BAG TOSS BOARD - SEE DETAIL 8, SHEET LA6.4
  - ㉗ ORCHID ROPE COURSE (AGES 5-12) - SEE DETAIL 4, SHEET LA6.4
  - ㉘ DYNAMO PLAY STRUCTURE (AGES 2-5) - SEE DETAIL 3, SHEET LA6.4
  - ㉙ PICKLE BALL COURT
  - ㉚ TENSILE SHADE STRUCTURE
  - ㉛ STAMPED ASPHALT PEDESTRIAN CROSSWALK - SEE DETAIL 9, SHEET LA6.1



SYMBOLS AND ABBREVIATIONS

- TYP: TYPICAL
- POINT OF BEGINNING FOR DIMENSIONS



KEY MAP

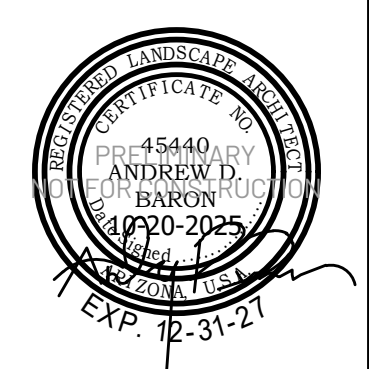
NOT TO SCALE

1	2	3	4	5	6
---	---	---	---	---	---

Final Site Plan  
Haven at Destination  
NE Corner of Meridian RD and AZ Route 24  
Mesa, AZ  
SHEET TITLE: LAYOUT PLAN

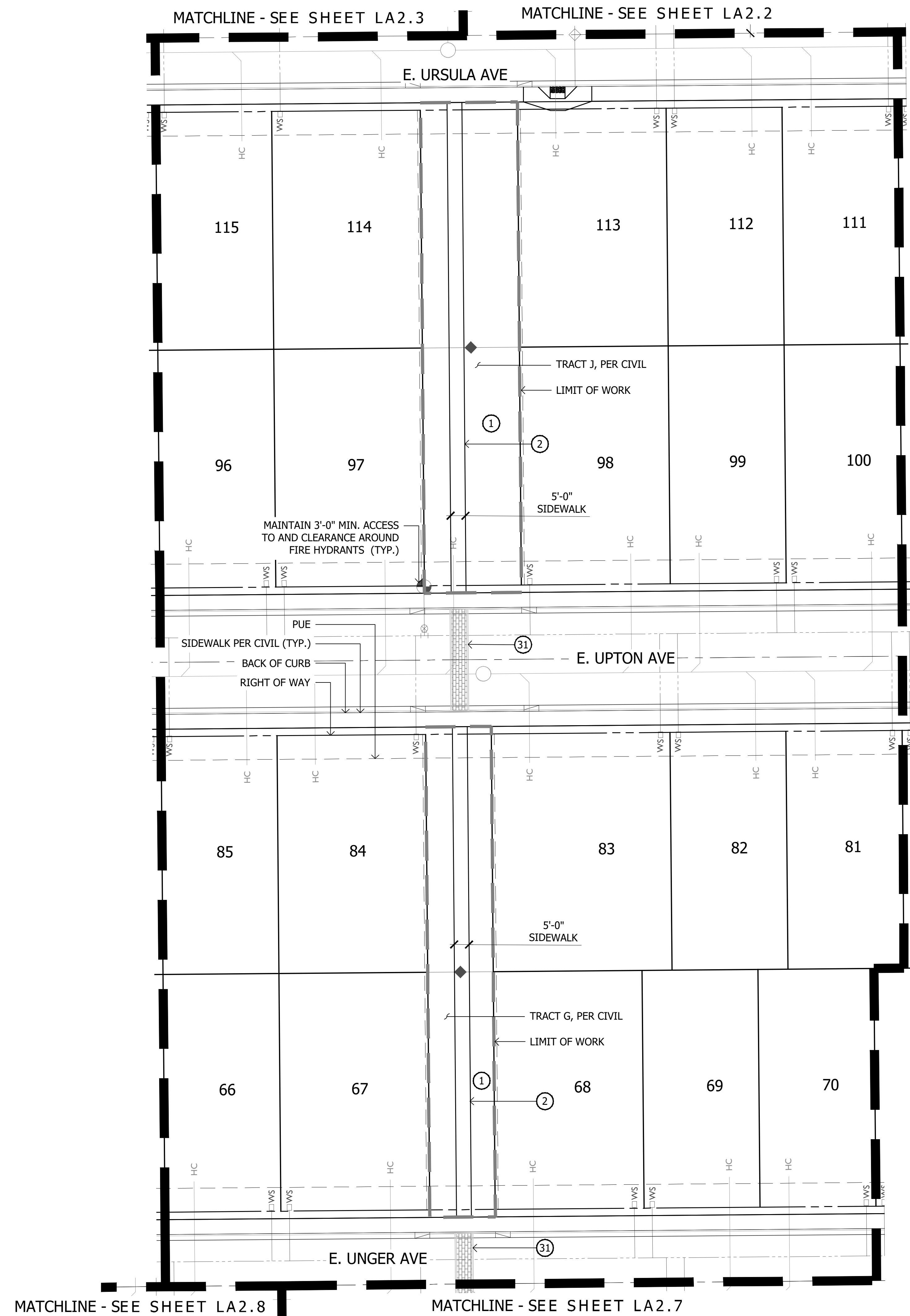


**ABLA**  
310 E. RIO SALADO PARKWAY  
TEMPE, ARIZONA 85281  
OFFICE: 480-530-0077  
WEB: ABLASTUDIO.COM



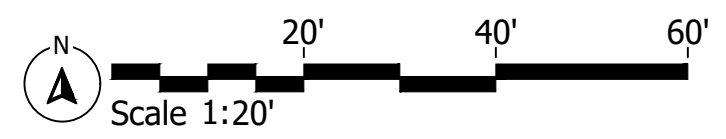
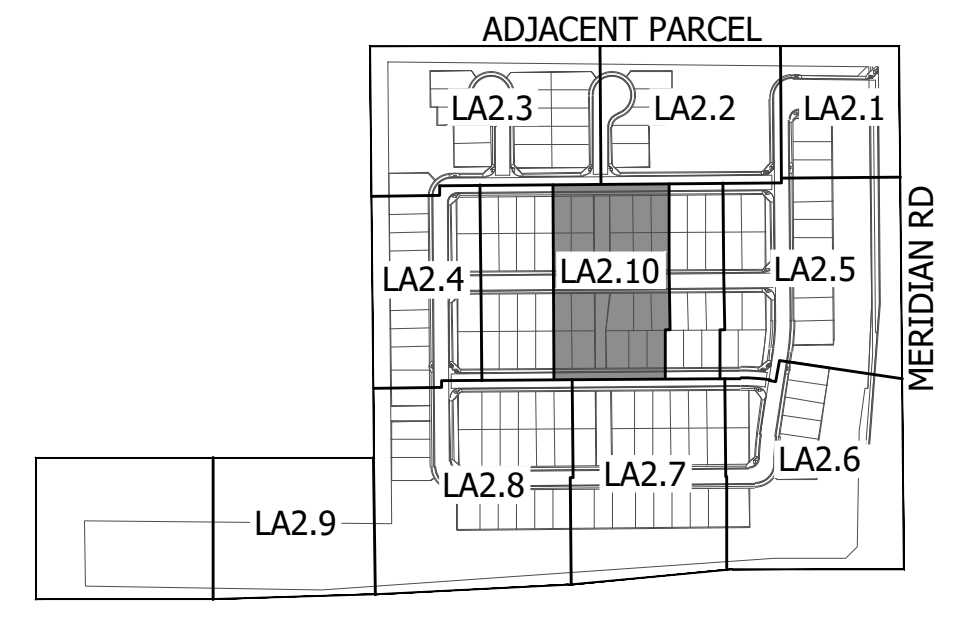
© Copyright 2025 ABLA, LLC.

DATE: 10-20-2025  
ISSUED FOR: 4th Review  
DRAWN BY: DCR, AS, AR  
CHECKED BY: MP  
PERMIT NUMBER:  
ABLA PROJECT NUMBER:  
86-131-25



- KEYNOTES**
- NOTE:  
SEE MATERIALS SCHEDULE ON SHEET LA0.2 FOR MANUFACTURER INFORMATION, COLORS, AND FINISHES.
- 1 LANDSCAPE AREA WITH DECOMPOSED GRANITE - SEE PLANTING LEGEND
  - 2 5'-0" CONCRETE SIDEWALK - SEE DETAILS 1&2, SHEET LA6.1
  - 3 CONCRETE HEADER - SEE DETAIL 4, SHEET LA6.1
  - 4 CONCRETE TURNDOWN - SEE DETAIL 7, SHEET LA6.1
  - 5 CONCRETE HEADER TURNDOWN - SEE DETAIL 5, SHEET LA6.1
  - 6 CONCRETE PAD
  - 7 DIAMOND SCORED CONCRETE OR APPROVED EQUAL BY OWNER
  - 8 ADA ACCESSIBLE RAMP - SEE DETAIL 3, SHEET LA6.1
  - 9 WOOD FIBER - SEE DETAIL 6, SHEET LA6.1
  - 10 TURF
  - 11 ARTIFICIAL TURF
  - 12 STABILIZED DG - SEE DETAIL 8, SHEET LA6.1
  - 13 THEME WALL - SEE DETAIL 1, SHEET LA6.2
  - 14 CUSTOM SHADE STRUCTURE - SEE DETAIL 1, SHEET LA6.3
  - 15 SWAY BENCH - SEE DETAIL 2, SHEET LA6.3
  - 16 DOOLEY WALL - SEE DETAIL 3, SHEET LA6.2
  - 17 PRIMARY ENTRY MONUMENT - SEE DETAIL 3, SHEET LA6.3
  - 18 PICKLEBALL FENCE - SEE DETAIL 1, SHEET LA6.4
  - 19 SCREEN WALL CONDITION A - SEE DETAIL 2, SHEET LA6.4
  - 20 SCREEN WALL CONDITION B - SEE DETAIL 2, SHEET LA6.4
  - 21 BENCH - SEE DETAIL 5, SHEET LA6.4
  - 22 TRASH RECEPTACLE - SEE DETAIL 6, SHEET LA6.4
  - 23 16' x 16' RAMADA - SEE DETAIL 10, SHEET LA6.4
  - 24 RECTANGULAR PICNIC TABLE - SEE DETAIL 7, SHEET LA6.4
  - 25 ADA ACCESSIBLE PICNIC TABLE - SEE DETAIL 9, SHEET LA6.4
  - 26 BAG TOSS BOARD - SEE DETAIL 8, SHEET LA6.4
  - 27 ORCHID ROPE COURSE (AGES 5-12) - SEE DETAIL 4, SHEET LA6.4
  - 28 DYNAMO PLAY STRUCTURE (AGES 2-5) - SEE DETAIL 3, SHEET LA6.4
  - 29 PICKLE BALL COURT
  - 30 TENSILE SHADE STRUCTURE
  - 31 STAMPED ASPHALT PEDESTRIAN CROSSWALK - SEE DETAIL 9, SHEET LA6.1

- SYMBOLS AND ABBREVIATIONS**
- TYP: TYPICAL
  - POINT OF BEGINNING FOR DIMENSIONS



**KEY MAP**

NOT TO SCALE

**Final Site Plan**  
Haven at Destination  
NE Corner of Meridian RD and AZ Route 24  
Mesa, AZ

**ASHTON WOODS**

**ABLA**  
310 E. RIO SALADO PARKWAY  
TEMPE, ARIZONA 85281  
OFFICE: 480-530-0077  
WEB: ABLASTUDIO.COM

Professional Seal: PREPARED BY ANDREW D. BARON, LICENSED PROFESSIONAL LANDSCAPE ARCHITECT, EXP. 12-31-21

© Copyright 2025 ABLA, LLC.

DATE: 10-20-2025  
ISSUED FOR: 4th Review  
DRAWN BY: DCR, AS, AR  
CHECKED BY: MP  
PERMIT NUMBER:  
ABLA PROJECT NUMBER:  
86-131-25

**LA2.10**

PG: 12 OF 28

SHEET TITLE: LAYOUT PLAN